

最低賃金引上げ額・率と影響率の関係表

| 件 名 | | | | | |
|----------|-------|-------|---------|-------|-------------|
| 業 種 | | | | | |
| 現行の最低賃金額 | | 時 間 額 | | 859円 | |
| 未 満 率 | | 1.5% | | | |
| 項 番 | 時 間 額 | | | 影 響 率 | 未 満 労 働 者 数 |
| | 引上げ額 | 引上げ率 | 引上げ後時間額 | | |
| 1 | 1 | 0.12 | 860 | 6.13 | 21,083 |
| 2 | 2 | 0.23 | 861 | 9.91 | 34,115 |
| 3 | 3 | 0.35 | 862 | 9.98 | 34,346 |
| 4 | 4 | 0.47 | 863 | 10.08 | 34,673 |
| 5 | 5 | 0.58 | 864 | 10.08 | 34,673 |
| 6 | 6 | 0.70 | 865 | 10.33 | 35,550 |
| 7 | 7 | 0.81 | 866 | 10.81 | 37,188 |
| 8 | 8 | 0.93 | 867 | 10.96 | 37,731 |
| 9 | 9 | 1.05 | 868 | 10.98 | 37,785 |
| 10 | 10 | 1.16 | 869 | 11.00 | 37,852 |
| 11 | 11 | 1.28 | 870 | 11.76 | 40,471 |
| 12 | 12 | 1.40 | 871 | 13.02 | 44,820 |
| 13 | 13 | 1.51 | 872 | 13.07 | 44,962 |
| 14 | 14 | 1.63 | 873 | 13.14 | 45,205 |
| 15 | 15 | 1.75 | 874 | 13.15 | 45,248 |
| 16 | 16 | 1.86 | 875 | 13.19 | 45,405 |
| 17 | 17 | 1.98 | 876 | 13.45 | 46,296 |
| 18 | 18 | 2.10 | 877 | 13.60 | 46,801 |
| 19 | 19 | 2.21 | 878 | 13.63 | 46,892 |
| 20 | 20 | 2.33 | 879 | 13.64 | 46,935 |
| 21 | 21 | 2.44 | 880 | 13.84 | 47,617 |
| 22 | 22 | 2.56 | 881 | 15.75 | 54,215 |
| 23 | 23 | 2.68 | 882 | 15.75 | 54,215 |
| 24 | 24 | 2.79 | 883 | 15.79 | 54,323 |
| 25 | 25 | 2.91 | 884 | 15.79 | 54,323 |
| 26 | 26 | 3.03 | 885 | 15.81 | 54,406 |
| 27 | 27 | 3.14 | 886 | 16.03 | 55,176 |
| 28 | 28 | 3.26 | 887 | 16.09 | 55,367 |
| 29 | 29 | 3.38 | 888 | 16.18 | 55,671 |
| 30 | 30 | 3.49 | 889 | 16.24 | 55,892 |
| 31 | 31 | 3.61 | 890 | 16.38 | 56,384 |
| 32 | 32 | 3.73 | 891 | 17.63 | 60,658 |
| 33 | 33 | 3.84 | 892 | 17.64 | 60,720 |
| 34 | 34 | 3.96 | 893 | 17.76 | 61,106 |
| 35 | 35 | 4.07 | 894 | 17.76 | 61,106 |

最低賃金引上げ額・率と影響率の関係表

| 件名 | | | | | |
|----------|------|------|---------|-------|--------|
| 業種 | | | | | |
| 現行の最低賃金額 | 時間額 | 859円 | | | |
| 未満率 | 1.5% | | | | |
| 項番 | 時間額 | | | 影響率 | 未満労働者数 |
| | 引上げ額 | 引上げ率 | 引上げ後時間額 | | |
| 36 | 36 | 4.19 | 895 | 17.86 | 61,476 |
| 37 | 37 | 4.31 | 896 | 17.94 | 61,730 |
| 38 | 38 | 4.42 | 897 | 18.00 | 61,952 |
| 39 | 39 | 4.54 | 898 | 18.02 | 61,995 |
| 40 | 40 | 4.66 | 899 | 18.07 | 62,188 |
| 41 | 41 | 4.77 | 900 | 18.10 | 62,271 |
| 42 | 42 | 4.89 | 901 | 22.46 | 77,300 |
| 43 | 43 | 5.01 | 902 | 22.47 | 77,337 |
| 44 | 44 | 5.12 | 903 | 22.53 | 77,532 |
| 45 | 45 | 5.24 | 904 | 22.60 | 77,776 |
| 46 | 46 | 5.36 | 905 | 22.69 | 78,099 |
| 47 | 47 | 5.47 | 906 | 23.12 | 79,546 |
| 48 | 48 | 5.59 | 907 | 23.18 | 79,767 |
| 49 | 49 | 5.70 | 908 | 23.20 | 79,841 |
| 50 | 50 | 5.82 | 909 | 23.33 | 80,280 |

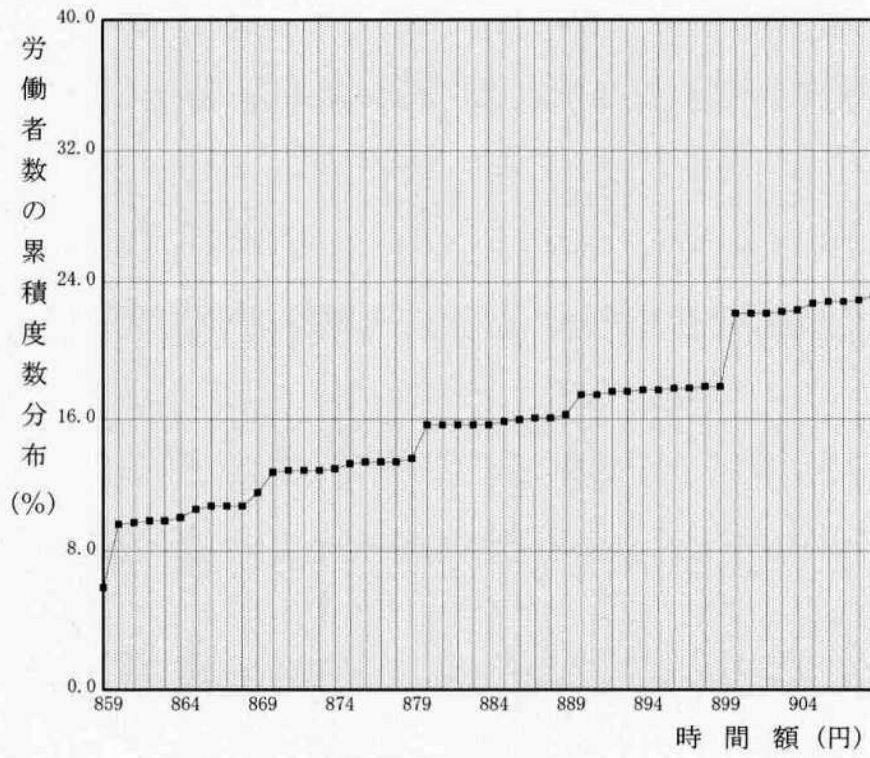
最低賃金基礎調査結果

| 1時間当りの所定内賃金(円) | 労働者数(人) | 累積度数分布(%) | 分布(%) |
|----------------|---------|-----------|-------|
| 合計労働者数 | 344,129 | 100.0 | 100.0 |
| 858 | 4,990 | 1.5 | 1.5 |
| 859 | 21,083 | 6.1 | 4.7 |
| 860 | 34,115 | 9.9 | 3.8 |
| 861 | 34,346 | 10.0 | 0.1 |
| 862 | 34,673 | 10.1 | 0.1 |
| 863 | 34,673 | 10.1 | 0.0 |
| 864 | 35,550 | 10.3 | 0.3 |
| 865 | 37,188 | 10.8 | 0.5 |
| 866 | 37,731 | 11.0 | 0.2 |
| 867 | 37,785 | 11.0 | 0.0 |
| 868 | 37,852 | 11.0 | 0.0 |
| 869 | 40,471 | 11.8 | 0.8 |
| 870 | 44,820 | 13.0 | 1.3 |
| 871 | 44,962 | 13.1 | 0.0 |
| 872 | 45,205 | 13.1 | 0.1 |
| 873 | 45,248 | 13.1 | 0.0 |
| 874 | 45,405 | 13.2 | 0.0 |
| 875 | 46,296 | 13.5 | 0.3 |
| 876 | 46,801 | 13.6 | 0.1 |
| 877 | 46,892 | 13.6 | 0.0 |
| 878 | 46,935 | 13.6 | 0.0 |
| 879 | 47,617 | 13.8 | 0.2 |
| 880 | 54,215 | 15.8 | 1.9 |
| 881 | 54,215 | 15.8 | 0.0 |
| 882 | 54,323 | 15.8 | 0.0 |
| 883 | 54,323 | 15.8 | 0.0 |
| 884 | 54,406 | 15.8 | 0.0 |
| 885 | 55,176 | 16.0 | 0.2 |
| 886 | 55,367 | 16.1 | 0.1 |
| 887 | 55,671 | 16.2 | 0.1 |
| 888 | 55,892 | 16.2 | 0.1 |
| 889 | 56,384 | 16.4 | 0.1 |
| 890 | 60,658 | 17.6 | 1.2 |
| 891 | 60,720 | 17.6 | 0.0 |
| 892 | 61,106 | 17.8 | 0.1 |

最低賃金基礎調査結果

| 1 時間当りの所定内賃金(円) | 労働者数(人) | 累積度数分布(%) | 分布(%) |
|-----------------|---------|-----------|-------|
| 合計労働者数 | 344,129 | 100.0 | 100.0 |
| 893 | 61,106 | 17.8 | 0.0 |
| 894 | 61,476 | 17.9 | 0.1 |
| 895 | 61,730 | 17.9 | 0.1 |
| 896 | 61,952 | 18.0 | 0.1 |
| 897 | 61,995 | 18.0 | 0.0 |
| 898 | 62,188 | 18.1 | 0.1 |
| 899 | 62,271 | 18.1 | 0.0 |
| 900 | 77,300 | 22.5 | 4.4 |
| 901 | 77,337 | 22.5 | 0.0 |
| 902 | 77,532 | 22.5 | 0.1 |
| 903 | 77,776 | 22.6 | 0.1 |
| 904 | 78,099 | 22.7 | 0.1 |
| 905 | 79,546 | 23.1 | 0.4 |
| 906 | 79,767 | 23.2 | 0.1 |
| 907 | 79,841 | 23.2 | 0.0 |
| 908 | 80,280 | 23.3 | 0.1 |
| 909 | 81,078 | 23.6 | 0.2 |
| 910 | 344,129 | 100.0 | 76.4 |
| | | | |
| | | | |
| | | | |
| | | | |
| | | | |
| | | | |
| | | | |
| | | | |
| | | | |
| | | | |
| | | | |
| | | | |
| | | | |
| | | | |
| | | | |
| | | | |
| | | | |
| | | | |
| | | | |
| | | | |
| | | | |
| | | | |
| | | | |
| | | | |
| | | | |

時間額に対するその該当労働者数の累積度数分布



時間額に対するその該当労働者数の分布

