

長崎県最低賃金基礎調査結果

- 最低賃金基礎調査結果（労働者数による復元）

総括表（１）（産業・就業形態別の賃金額階級別、規模別、地域別、年齢別表）

04年 総括表（１）

産業：（全て）製造業新聞業、出版業 就業形態：（全て）

産別適用除外含む全労働者

時間当たり所定内賃金額 （３手当を除く）	合計	規模別			地域別				年齢別					
		1～9人	10～29人	30～99人	長崎・佐世保	その他の地域	離島		17歳以下	18～19歳	20～54歳	55～59歳	60～64歳	65歳以上
計	182,516	80,908	88,837	12,771	91,579	78,277	12,660		435	3,403	119,434	19,025	18,311	21,907
円	3,556	2,627	918	11	1,259	1,698	599			83	1,756	514	563	641
-	810	(1.9)	(3.2)	(1.0)	(0.1)	(1.4)	(2.2)	(4.7)		(2.4)	(1.5)	(2.7)	(3.1)	(2.9)
811 -	811	3,592	2,663	918	11	1,259	1,698	635		83	1,791	514	563	641
		(2.0)	(3.3)	(1.0)	(0.1)	(1.4)	(2.2)	(5.0)		(2.4)	(1.5)	(2.7)	(3.1)	(2.9)
812 -	812	3,753	2,702	1,039	11	1,395	1,723	635		83	1,952	514	563	641
		(2.1)	(3.3)	(1.2)	(0.1)	(1.5)	(2.2)	(5.0)		(2.4)	(1.6)	(2.7)	(3.1)	(2.9)
813 -	813	3,753	2,702	1,039	11	1,395	1,723	635		83	1,952	514	563	641
		(2.1)	(3.3)	(1.2)	(0.1)	(1.5)	(2.2)	(5.0)		(2.4)	(1.6)	(2.7)	(3.1)	(2.9)
814 -	814	3,804	2,702	1,091	11	1,446	1,723	635		83	2,004	514	563	641
		(2.1)	(3.3)	(1.2)	(0.1)	(1.6)	(2.2)	(5.0)		(2.4)	(1.7)	(2.7)	(3.1)	(2.9)
815 -	815	3,885	2,783	1,091	11	1,446	1,804	635		83	2,059	514	588	641
		(2.1)	(3.4)	(1.2)	(0.1)	(1.6)	(2.3)	(5.0)		(2.4)	(1.7)	(2.7)	(3.2)	(2.9)
816 -	816	3,885	2,783	1,091	11	1,446	1,804	635		83	2,059	514	588	641
		(2.1)	(3.4)	(1.2)	(0.1)	(1.6)	(2.3)	(5.0)		(2.4)	(1.7)	(2.7)	(3.2)	(2.9)
817 -	817	3,924	2,822	1,091	11	1,486	1,804	635		83	2,098	514	588	641
		(2.1)	(3.5)	(1.2)	(0.1)	(1.6)	(2.3)	(5.0)		(2.4)	(1.8)	(2.7)	(3.2)	(2.9)
818 -	818	3,963	2,861	1,091	11	1,525	1,804	635		83	2,137	514	588	641
		(2.2)	(3.5)	(1.2)	(0.1)	(1.7)	(2.3)	(5.0)		(2.4)	(1.8)	(2.7)	(3.2)	(2.9)
819 -	819	3,963	2,861	1,091	11	1,525	1,804	635		83	2,137	514	588	641
		(2.2)	(3.5)	(1.2)	(0.1)	(1.7)	(2.3)	(5.0)		(2.4)	(1.8)	(2.7)	(3.2)	(2.9)
820 -	820	4,126	2,972	1,143	11	1,639	1,852	635		135	2,200	514	588	689
		(2.3)	(3.7)	(1.3)	(0.1)	(1.8)	(2.4)	(5.0)		(4.0)	(1.8)	(2.7)	(3.2)	(3.1)
821 -	821	11,861	6,433	3,805	1,622	4,346	6,561	954	41	203	6,218	1,345	1,463	2,590
		(6.5)	(8.0)	(4.3)	(12.7)	(4.7)	(8.4)	(7.5)	(9.5)	(6.0)	(5.2)	(7.1)	(8.0)	(11.8)
822 -	822	11,948	6,473	3,850	1,625	4,393	6,561	994	41	203	6,265	1,386	1,463	2,590
		(6.5)	(8.0)	(4.3)	(12.7)	(4.8)	(8.4)	(7.8)	(9.5)	(6.0)	(5.2)	(7.3)	(8.0)	(11.8)
823 -	823	12,170	6,692	3,852	1,625	4,437	6,738	994	44	238	6,370	1,386	1,498	2,634
		(6.7)	(8.3)	(4.3)	(12.7)	(4.8)	(8.6)	(7.8)	(10.1)	(7.0)	(5.3)	(7.3)	(8.2)	(12.0)
824 -	824	12,390	6,733	3,852	1,805	4,452	6,904	1,034	44	238	6,451	1,386	1,634	2,638
		(6.8)	(8.3)	(4.3)	(14.1)	(4.9)	(8.8)	(8.2)	(10.1)	(7.0)	(5.4)	(7.3)	(8.9)	(12.0)
825 -	825	15,069	7,537	5,587	1,945	5,533	8,462	1,074	44	238	7,563	1,702	2,059	3,464
		(8.3)	(9.3)	(6.3)	(15.2)	(6.0)	(10.8)	(8.5)	(10.1)	(7.0)	(6.3)	(8.9)	(11.2)	(15.8)
826 -	826	15,340	7,666	5,712	1,962	5,611	8,637	1,091	44	238	7,736	1,752	2,067	3,503
		(8.4)	(9.5)	(6.4)	(15.4)	(6.1)	(11.0)	(8.6)	(10.1)	(7.0)	(6.5)	(9.2)	(11.3)	(16.0)
827 -	827	15,390	7,717	5,712	1,962	5,613	8,686	1,091	44	238	7,785	1,752	2,067	3,505
		(8.4)	(9.5)	(6.4)	(15.4)	(6.1)	(11.1)	(8.6)	(10.1)	(7.0)	(6.5)	(9.2)	(11.3)	(16.0)
828 -	828	15,755	7,717	5,712	2,327	5,613	9,051	1,091	44	238	8,150	1,752	2,067	3,505
		(8.6)	(9.5)	(6.4)	(18.2)	(6.1)	(11.6)	(8.6)	(10.1)	(7.0)	(6.8)	(9.2)	(11.3)	(16.0)
829 -	829	15,893	7,757	5,810	2,327	5,613	9,149	1,132	44	238	8,288	1,752	2,067	3,505
		(8.7)	(9.6)	(6.5)	(18.2)	(6.1)	(11.7)	(8.9)	(10.1)	(7.0)	(6.9)	(9.2)	(11.3)	(16.0)
830 -	830	25,024	11,565	10,803	2,655	9,881	13,749	1,394	133	609	13,232	2,837	3,257	4,955
		(13.7)	(14.3)	(12.2)	(20.8)	(10.8)	(17.6)	(11.0)	(30.7)	(17.9)	(11.1)	(14.9)	(17.8)	(22.6)
831 -	831	25,494	11,589	11,251	2,655	10,350	13,750	1,394	133	609	13,360	3,008	3,360	5,023
		(14.0)	(14.3)	(12.7)	(20.8)	(11.3)	(17.6)	(11.0)	(30.7)	(17.9)	(11.2)	(15.8)	(18.4)	(22.9)
832 -	832	25,625	11,589	11,381	2,655	10,481	13,750	1,394	133	609	13,490	3,008	3,360	5,023
		(14.0)	(14.3)	(12.8)	(20.8)	(11.4)	(17.6)	(11.0)	(30.7)	(17.9)	(11.3)	(15.8)	(18.4)	(22.9)
833 -	833	26,455	12,295	11,496	2,664	10,739	14,121	1,595	133	609	14,013	3,102	3,452	5,145
		(14.5)	(15.2)	(12.9)	(20.9)	(11.7)	(18.0)	(12.6)	(30.7)	(17.9)	(11.7)	(16.3)	(18.9)	(23.5)
834 -	834	26,496	12,295	11,537	2,664	10,739	14,162	1,595	133	609	14,054	3,102	3,452	5,145
		(14.5)	(15.2)	(13.0)	(20.9)	(11.7)	(18.1)	(12.6)	(30.7)	(17.9)	(11.8)	(16.3)	(18.9)	(23.5)
835 -	835	26,831	12,358	11,809	2,664	10,945	14,290	1,595	133	651	14,093	3,154	3,499	5,299
		(14.7)	(15.3)	(13.3)	(20.9)	(12.0)	(18.3)	(12.6)	(30.7)	(19.1)	(11.8)	(16.6)	(19.1)	(24.2)

836 -	836	26,866 (14.7)	12,393 (15.3)	11,809 (13.3)	2,664 (20.9)	10,945 (12.0)	14,325 (18.3)	1,595 (12.6)		133 (30.7)	651 (19.1)	14,128 (11.8)	3,154 (16.6)	3,499 (19.1)	5,299 (24.2)
837 -	837	27,221 (14.9)	12,467 (15.4)	12,090 (13.6)	2,664 (20.9)	11,265 (12.3)	14,361 (18.3)	1,595 (12.6)		133 (30.7)	651 (19.1)	14,484 (12.1)	3,154 (16.6)	3,499 (19.1)	5,299 (24.2)
838 -	838	27,264 (14.9)	12,509 (15.5)	12,092 (13.6)	2,664 (20.9)	11,308 (12.3)	14,361 (18.3)	1,595 (12.6)		133 (30.7)	651 (19.1)	14,525 (12.2)	3,154 (16.6)	3,499 (19.1)	5,301 (24.2)
839 -	839	27,434 (15.0)	12,509 (15.5)	12,262 (13.8)	2,664 (20.9)	11,411 (12.5)	14,428 (18.4)	1,595 (12.6)		133 (30.7)	651 (19.1)	14,696 (12.3)	3,154 (16.6)	3,499 (19.1)	5,301 (24.2)
840	840	29,997 (16.4)	13,832 (17.1)	13,468 (15.2)	2,697 (21.1)	12,530 (13.7)	15,747 (20.1)	1,720 (13.6)		133 (30.7)	863 (25.4)	16,005 (13.4)	3,303 (17.4)	3,826 (20.9)	5,867 (26.8)
841	841	30,079 (16.5)	13,867 (17.1)	13,512 (15.2)	2,700 (21.1)	12,575 (13.7)	15,785 (20.2)	1,720 (13.6)		133 (30.7)	863 (25.4)	16,005 (13.4)	3,338 (17.5)	3,829 (20.9)	5,911 (27.0)
842	842	30,238 (16.6)	14,026 (17.3)	13,512 (15.2)	2,700 (21.1)	12,614 (13.8)	15,869 (20.3)	1,756 (13.9)		133 (30.7)	863 (25.4)	16,108 (13.5)	3,338 (17.5)	3,829 (20.9)	5,967 (27.2)
843	843	30,286 (16.6)	14,065 (17.4)	13,512 (15.2)	2,708 (21.2)	12,653 (13.8)	15,869 (20.3)	1,764 (13.9)		133 (30.7)	863 (25.4)	16,155 (13.5)	3,338 (17.5)	3,829 (20.9)	5,967 (27.2)
844	844	30,357 (16.6)	14,136 (17.5)	13,512 (15.2)	2,708 (21.2)	12,689 (13.9)	15,904 (20.3)	1,764 (13.9)		133 (30.7)	863 (25.4)	16,227 (13.6)	3,338 (17.5)	3,829 (20.9)	5,967 (27.2)
845	845	30,547 (16.7)	14,136 (17.5)	13,702 (15.4)	2,708 (21.2)	12,845 (14.0)	15,938 (20.4)	1,764 (13.9)		133 (30.7)	863 (25.4)	16,261 (13.6)	3,442 (18.1)	3,881 (21.2)	5,967 (27.2)
846	846	30,676 (16.8)	14,254 (17.6)	13,708 (15.4)	2,715 (21.3)	12,965 (14.2)	15,947 (20.4)	1,764 (13.9)		133 (30.7)	863 (25.4)	16,304 (13.7)	3,448 (18.1)	3,881 (21.2)	6,047 (27.6)
847	847	30,759 (16.9)	14,337 (17.7)	13,708 (15.4)	2,715 (21.3)	13,048 (14.2)	15,947 (20.4)	1,764 (13.9)		133 (30.7)	863 (25.4)	16,346 (13.7)	3,490 (18.3)	3,881 (21.2)	6,047 (27.6)
848	848	30,847 (16.9)	14,372 (17.8)	13,758 (15.5)	2,717 (21.3)	13,054 (14.3)	16,029 (20.5)	1,764 (13.9)		133 (30.7)	866 (25.4)	16,349 (13.7)	3,525 (18.5)	3,883 (21.2)	6,091 (27.8)
849	849	30,928 (16.9)	14,407 (17.8)	13,803 (15.5)	2,717 (21.3)	13,054 (14.3)	16,074 (20.5)	1,800 (14.2)		133 (30.7)	866 (25.4)	16,429 (13.8)	3,525 (18.5)	3,883 (21.2)	6,091 (27.8)
850	850	38,428 (21.1)	18,018 (22.3)	17,555 (19.8)	2,855 (22.4)	16,529 (18.0)	19,908 (25.4)	1,990 (15.7)		208 (47.8)	1,311 (38.5)	20,723 (17.4)	4,482 (23.6)	4,529 (24.7)	7,175 (32.8)
851	851	38,506 (21.1)	18,070 (22.3)	17,580 (19.8)	2,855 (22.4)	16,529 (18.0)	19,934 (25.5)	2,043 (16.1)		208 (47.8)	1,311 (38.5)	20,748 (17.4)	4,482 (23.6)	4,529 (24.7)	7,227 (33.0)
852	852	38,920 (21.3)	18,414 (22.8)	17,612 (19.8)	2,895 (22.7)	16,570 (18.1)	20,307 (25.9)	2,043 (16.1)		208 (47.8)	1,344 (39.5)	21,035 (17.6)	4,482 (23.6)	4,531 (24.7)	7,320 (33.4)
853	853	39,238 (21.5)	18,660 (23.1)	17,612 (19.8)	2,967 (23.2)	16,689 (18.2)	20,506 (26.2)	2,043 (16.1)		208 (47.8)	1,344 (39.5)	21,281 (17.8)	4,482 (23.6)	4,569 (25.0)	7,353 (33.6)
854	854	39,374 (21.6)	18,795 (23.2)	17,612 (19.8)	2,967 (23.2)	16,771 (18.3)	20,506 (26.2)	2,096 (16.6)		208 (47.8)	1,344 (39.5)	21,334 (17.9)	4,482 (23.6)	4,569 (25.0)	7,436 (33.9)
855	855	39,733 (21.8)	19,023 (23.5)	17,743 (20.0)	2,967 (23.2)	16,920 (18.5)	20,611 (26.3)	2,202 (17.4)		208 (47.8)	1,344 (39.5)	21,488 (18.0)	4,519 (23.8)	4,702 (25.7)	7,472 (34.1)
856	856	39,820 (21.8)	19,058 (23.6)	17,795 (20.0)	2,967 (23.2)	16,972 (18.5)	20,646 (26.4)	2,202 (17.4)		208 (47.8)	1,344 (39.5)	21,523 (18.0)	4,519 (23.8)	4,702 (25.7)	7,524 (34.3)
857	857	40,058 (21.9)	19,297 (23.9)	17,795 (20.0)	2,967 (23.2)	17,089 (18.7)	20,766 (26.5)	2,204 (17.4)		208 (47.8)	1,344 (39.5)	21,647 (18.1)	4,519 (23.8)	4,778 (26.1)	7,563 (34.5)
858	858	40,254 (22.1)	19,418 (24.0)	17,836 (20.1)	3,000 (23.5)	17,089 (18.7)	20,961 (26.8)	2,204 (17.4)		208 (47.8)	1,344 (39.5)	21,733 (18.2)	4,554 (23.9)	4,811 (26.3)	7,605 (34.7)
859	859	40,326 (22.1)	19,489 (24.1)	17,836 (20.1)	3,000 (23.5)	17,089 (18.7)	20,961 (26.8)	2,275 (18.0)		208 (47.8)	1,344 (39.5)	21,805 (18.3)	4,554 (23.9)	4,811 (26.3)	7,605 (34.7)
860	860	42,508 (23.3)	19,779 (24.4)	19,655 (22.1)	3,074 (24.1)	18,281 (20.0)	21,952 (28.0)	2,275 (18.0)		208 (47.8)	1,534 (45.1)	23,356 (19.6)	4,632 (24.3)	4,945 (27.0)	7,832 (35.8)
861	861	42,530 (23.3)	19,779 (24.4)	19,655 (22.1)	3,096 (24.2)	18,303 (20.0)	21,952 (28.0)	2,275 (18.0)		208 (47.8)	1,534 (45.1)	23,378 (19.6)	4,632 (24.3)	4,945 (27.0)	7,832 (35.8)
862	862	42,612 (23.3)	19,828 (24.5)	19,689 (22.2)	3,096 (24.2)	18,327 (20.0)	22,010 (28.1)	2,275 (18.0)		208 (47.8)	1,534 (45.1)	23,378 (19.6)	4,665 (24.5)	4,945 (27.0)	7,881 (36.0)
863	863	42,798 (23.4)	19,917 (24.6)	19,786 (22.3)	3,096 (24.2)	18,383 (20.1)	22,140 (28.3)	2,275 (18.0)		208 (47.8)	1,536 (45.1)	23,502 (19.7)	4,691 (24.7)	4,945 (27.0)	7,916 (36.1)
864	864	42,972 (23.5)	19,952 (24.7)	19,793 (22.3)	3,227 (25.3)	18,499 (20.2)	22,198 (28.4)	2,275 (18.0)		208 (47.8)	1,536 (45.1)	23,669 (19.8)	4,697 (24.7)	4,947 (27.0)	7,916 (36.1)

865	865	43,228 (23.7)	20,197 (25.0)	19,793 (22.3)	3,238 (25.4)	18,533 (20.2)	22,420 (28.6)	2,275 (18.0)		208 (47.8)	1,571 (46.2)	23,855 (20.0)	4,732 (24.9)	4,947 (27.0)	7,916 (36.1)
866	866	43,411 (23.8)	20,346 (25.1)	19,827 (22.3)	3,238 (25.4)	18,681 (20.4)	22,454 (28.7)	2,275 (18.0)		208 (47.8)	1,571 (46.2)	24,037 (20.1)	4,732 (24.9)	4,947 (27.0)	7,916 (36.1)
867	867	43,411 (23.8)	20,346 (25.1)	19,827 (22.3)	3,238 (25.4)	18,681 (20.4)	22,454 (28.7)	2,275 (18.0)		208 (47.8)	1,571 (46.2)	24,037 (20.1)	4,732 (24.9)	4,947 (27.0)	7,916 (36.1)
868	868	43,506 (23.8)	20,346 (25.1)	19,920 (22.4)	3,240 (25.4)	18,775 (20.5)	22,457 (28.7)	2,275 (18.0)		208 (47.8)	1,571 (46.2)	24,133 (20.2)	4,732 (24.9)	4,947 (27.0)	7,916 (36.1)
869	869	43,902 (24.1)	20,647 (25.5)	20,014 (22.5)	3,240 (25.4)	18,906 (20.6)	22,721 (29.0)	2,275 (18.0)		208 (47.8)	1,606 (47.2)	24,383 (20.4)	4,772 (25.1)	5,017 (27.4)	7,916 (36.1)
870	870	45,645 (25.0)	21,408 (26.5)	20,951 (23.6)	3,286 (25.7)	20,141 (22.0)	23,229 (29.7)	2,275 (18.0)		286 (65.8)	1,645 (48.3)	25,481 (21.3)	4,978 (26.2)	5,180 (28.3)	8,075 (36.9)
871	871	45,654 (25.0)	21,412 (26.5)	20,951 (23.6)	3,291 (25.8)	20,141 (22.0)	23,233 (29.7)	2,280 (18.0)		286 (65.8)	1,647 (48.4)	25,487 (21.3)	4,978 (26.2)	5,180 (28.3)	8,075 (36.9)
872	879	47,265 (25.9)	22,054 (27.3)	21,472 (24.2)	3,739 (29.3)	20,782 (22.7)	24,125 (30.8)	2,357 (18.6)		286 (65.8)	1,653 (48.6)	26,436 (22.1)	5,237 (27.5)	5,466 (29.9)	8,185 (37.4)
880	889	50,044 (27.4)	23,514 (29.1)	22,674 (25.5)	3,856 (30.2)	22,111 (24.1)	25,541 (32.6)	2,393 (18.9)		286 (65.8)	1,684 (49.5)	27,842 (23.3)	5,678 (29.8)	5,843 (31.9)	8,710 (39.8)
890	899	52,425 (28.7)	24,393 (30.1)	23,953 (27.0)	4,079 (31.9)	23,502 (25.7)	26,426 (33.8)	2,497 (19.7)		286 (65.8)	1,709 (50.2)	29,625 (24.8)	5,867 (30.8)	6,009 (32.8)	8,929 (40.8)
900	909	63,667 (34.9)	29,239 (36.1)	30,099 (33.9)	4,329 (33.9)	30,233 (33.0)	30,164 (38.5)	3,269 (25.8)		435 (100.0)	2,324 (68.3)	36,399 (30.5)	6,499 (34.2)	6,972 (38.1)	11,037 (50.4)
910	919	67,153 (36.8)	30,449 (37.6)	31,551 (35.5)	5,153 (40.3)	32,303 (35.3)	31,217 (39.9)	3,633 (28.7)			2,431 (71.4)	38,865 (32.5)	6,793 (35.7)	7,322 (40.0)	11,307 (51.6)
920	929	69,921 (38.3)	31,685 (39.2)	32,804 (36.9)	5,432 (42.5)	33,736 (36.8)	32,370 (41.4)	3,815 (30.1)			2,545 (74.8)	40,563 (34.0)	6,972 (36.6)	7,710 (42.1)	11,696 (53.4)
930	939	71,970 (39.4)	32,726 (40.4)	33,626 (37.9)	5,618 (44.0)	34,771 (38.0)	33,263 (42.5)	3,936 (31.1)			2,632 (77.4)	41,954 (35.1)	7,029 (36.9)	7,883 (43.0)	12,037 (54.9)
940	949	74,015 (40.6)	33,383 (41.3)	34,949 (39.3)	5,682 (44.5)	35,578 (38.8)	34,429 (44.0)	4,008 (31.7)			2,632 (77.4)	43,455 (36.4)	7,211 (37.9)	8,070 (44.1)	12,211 (55.7)
950	959	76,724 (42.0)	34,711 (42.9)	36,259 (40.8)	5,754 (45.1)	37,144 (40.6)	35,443 (45.3)	4,138 (32.7)			2,681 (78.8)	45,224 (37.9)	7,443 (39.1)	8,325 (45.5)	12,616 (57.6)
960	969	78,906 (43.2)	35,644 (44.1)	37,323 (42.0)	5,938 (46.5)	37,983 (41.5)	36,749 (46.9)	4,174 (33.0)			2,684 (78.9)	46,916 (39.3)	7,679 (40.4)	8,427 (46.0)	12,764 (58.3)
970	979	80,740 (44.2)	36,391 (45.0)	38,323 (43.1)	6,027 (47.2)	38,544 (42.1)	37,784 (48.3)	4,413 (34.9)			2,754 (80.9)	48,061 (40.2)	7,916 (41.6)	8,501 (46.4)	13,074 (59.7)
980	989	82,990 (45.5)	37,295 (46.1)	39,539 (44.5)	6,156 (48.2)	39,768 (43.4)	38,657 (49.4)	4,565 (36.1)			2,841 (83.5)	49,726 (41.6)	8,144 (42.8)	8,604 (47.0)	13,240 (60.4)
990	999	84,414 (46.3)	37,888 (46.8)	40,313 (45.4)	6,213 (48.7)	40,510 (44.2)	39,188 (50.1)	4,716 (37.3)			2,845 (83.6)	50,836 (42.6)	8,263 (43.4)	8,746 (47.8)	13,288 (60.7)
1000	1099	105,613 (57.9)	48,474 (59.9)	49,950 (56.2)	7,189 (56.3)	51,970 (56.7)	47,682 (60.9)	5,960 (47.1)			3,143 (92.4)	64,610 (54.1)	10,149 (53.3)	11,005 (60.1)	16,271 (74.3)
1100	1199	119,649 (65.6)	54,249 (67.1)	56,905 (64.1)	8,495 (66.5)	58,697 (64.1)	53,799 (68.7)	7,154 (56.5)			3,189 (93.7)	74,762 (62.6)	11,421 (60.0)	12,485 (68.2)	17,356 (79.2)
1200	1299	133,264 (73.0)	60,132 (74.3)	63,634 (71.6)	9,498 (74.4)	65,624 (71.7)	59,275 (75.7)	8,365 (66.1)			3,229 (94.9)	84,651 (70.9)	12,834 (67.5)	13,608 (74.3)	18,507 (84.5)
1300	1399	142,575 (78.1)	63,794 (78.8)	68,136 (76.7)	10,646 (83.4)	70,262 (76.7)	63,282 (80.8)	9,030 (71.3)			3,320 (97.6)	91,774 (76.8)	13,706 (72.0)	14,240 (77.8)	19,099 (87.2)
1400	1499	151,333 (82.9)	67,517 (83.4)	72,617 (81.7)	11,198 (87.7)	74,676 (81.5)	66,780 (85.3)	9,876 (78.0)			3,320 (97.6)	98,421 (82.4)	14,480 (76.1)	14,993 (81.9)	19,682 (89.8)
1500		182,516 (100.0)	80,908 (100.0)	88,837 (100.0)	12,771 (100.0)	91,579 (100.0)	78,277 (100.0)	12,660 (100.0)			3,403 (100.0)	119,434 (100.0)	19,025 (100.0)	18,311 (100.0)	21,907 (100.0)
月平均賃金額		168,705	162,005	171,764	189,664	169,948	165,464	179,654		47,228	90,196	178,702	183,452	170,590	114,331
時間当平均賃金額		1,193	1,185	1,208	1,134	1,217	1,159	1,222		864	933	1,208	1,255	1,203	1,093
月一人当たり労働時間数		138	134	137	166	136	139	144		55	93	144	143	139	107
第1・20分位数		821	821	825	821	825	821	811		821	821	821	821	821	821
第1・10分位数		830	830	830	821	830	825	830		823	830	830	830	825	821
第1・4分位数		870	866	883	864	892	850	909		830	840	900	869	855	840
中位数		1,008	1,000	1,034	1,000	1,020	998	1,106		870	892	1,050	1,060	1,000	905
四分位偏差係数		0.2299	0.2241	0.2327	0.2183	0.2339	0.2166	0.2574		0.0404	0.0522	0.2234	0.2815	0.2337	0.1441

【上段】

累積労働者数

【下段】

累積構成比

最低賃金基礎調査結果（労働者数による復元）

1時間当りの所定賃金（円）	累積労働者数（人）	累積度数分布（%）	分布（%）
合計労働者数	182,516	100.0	100.0
～ 810	3,556	1.9	1.9
811 ～ 811	3,592	2.0	0.0
812 ～ 812	3,753	2.1	0.1
813 ～ 813	3,753	2.1	0.0
814 ～ 814	3,804	2.1	0.0
815 ～ 815	3,885	2.1	0.0
816 ～ 816	3,885	2.1	0.0
817 ～ 817	3,924	2.1	0.0
818 ～ 818	3,963	2.2	0.0
819 ～ 819	3,963	2.2	0.0
820 ～ 820	4,126	2.3	0.1
821 ～ 821	11,861	6.5	4.2
822 ～ 822	11,948	6.5	0.0
823 ～ 823	12,170	6.7	0.1
824 ～ 824	12,390	6.8	0.1
825 ～ 825	15,069	8.3	1.5
826 ～ 826	15,340	8.4	0.1
827 ～ 827	15,390	8.4	0.0
828 ～ 828	15,755	8.6	0.2
829 ～ 829	15,893	8.7	0.1
830 ～ 830	25,024	13.7	5.0
831 ～ 831	25,494	14.0	0.3
832 ～ 832	25,625	14.0	0.1
833 ～ 833	26,455	14.5	0.5
834 ～ 834	26,496	14.5	0.0
835 ～ 835	26,831	14.7	0.2
836 ～ 836	26,866	14.7	0.0
837 ～ 837	27,221	14.9	0.2
838 ～ 838	27,264	14.9	0.0
839 ～ 839	27,434	15.0	0.1
840 ～ 840	29,997	16.4	1.4
841 ～ 841	30,079	16.5	0.0
842 ～ 842	30,238	16.6	0.1
843 ～ 843	30,286	16.6	0.0
844 ～ 844	30,357	16.6	0.0
845 ～ 845	30,547	16.7	0.1
846 ～ 846	30,676	16.8	0.1
847 ～ 847	30,759	16.9	0.0
848 ～ 848	30,847	16.9	0.0

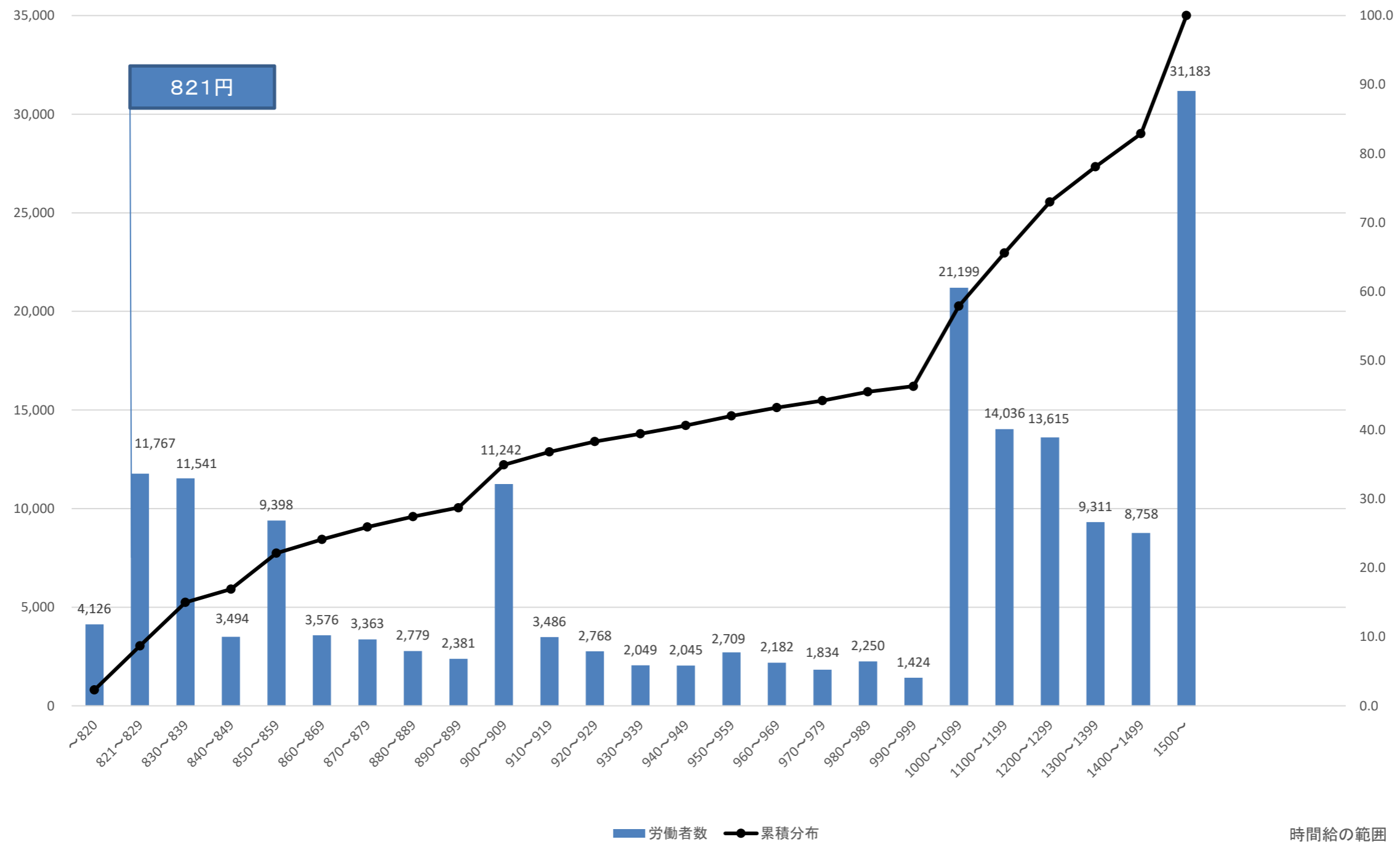
849	~	849	30,928	16.9	0.0
850	~	850	38,428	21.1	4.1
851	~	851	38,506	21.1	0.0
852	~	852	38,920	21.3	0.2
853	~	853	39,238	21.5	0.2
854	~	854	39,374	21.6	0.1
855	~	855	39,733	21.8	0.2
856	~	856	39,820	21.8	0.0
857	~	857	40,058	21.9	0.1
858	~	858	40,254	22.1	0.1
859	~	859	40,326	22.1	0.0
860	~	860	42,508	23.3	1.2
861	~	861	42,530	23.3	0.0
862	~	862	42,612	23.3	0.0
863	~	863	42,798	23.4	0.1
864	~	864	42,972	23.5	0.1
865	~	865	43,228	23.7	0.1
866	~	866	43,411	23.8	0.1
867	~	867	43,411	23.8	0.0
868	~	868	43,506	23.8	0.1
869	~	869	43,902	24.1	0.2
870	~	870	45,645	25.0	1.0
871	~	871	45,654	25.0	0.0
872	~	879	47,265	25.9	0.9
880	~	889	50,044	27.4	1.5
890	~	899	52,425	28.7	1.3
900	~	909	63,667	34.9	6.2
910	~	919	67,153	36.8	1.9
920	~	929	69,921	38.3	1.5
930	~	939	71,970	39.4	1.1
940	~	949	74,015	40.6	1.1
950	~	959	76,724	42.0	1.5
960	~	969	78,906	43.2	1.2
970	~	979	80,740	44.2	1.0
980	~	989	82,990	45.5	1.2
990	~	999	84,414	46.3	0.8
1,000	~	1,099	105,613	57.9	11.6
1,100	~	1,199	119,649	65.6	7.7
1,200	~	1,299	133,264	73.0	7.5
1,300	~	1,399	142,575	78.1	5.1
1,400	~	1,499	151,333	82.9	4.8
1,500	~		182,516	100.0	17.1

各賃金階級における労働者数と累積度数分布(労働者数による復元)

令和4年度 最低賃金基礎調査結果より

(人)

(%)



最低賃金引上げ額・率と影響率の関係表

件名	長崎県最低賃金（労働者数による復元）				
業種					
現行の最低賃金額	時間額	821円			
未満率	2.3%				
項番	時間額			影響率	未満労働者数
	引上げ額	引上げ率	引上げ後時間額		
1	1	0.12	822	6.5	11,861
2	2	0.24	823	6.5	11,948
3	3	0.37	824	6.7	12,170
4	4	0.49	825	6.8	12,390
5	5	0.61	826	8.3	15,069
6	6	0.73	827	8.4	15,340
7	7	0.85	828	8.4	15,390
8	8	0.97	829	8.6	15,755
9	9	1.10	830	8.7	15,893
10	10	1.22	831	13.7	25,024
11	11	1.34	832	14.0	25,494
12	12	1.46	833	14.0	25,625
13	13	1.58	834	14.5	26,455
14	14	1.71	835	14.5	26,496
15	15	1.83	836	14.7	26,831
16	16	1.95	837	14.7	26,866
17	17	2.07	838	14.9	27,221
18	18	2.19	839	14.9	27,264
19	19	2.31	840	15.0	27,434
20	20	2.44	841	16.4	29,997
21	21	2.56	842	16.5	30,079
22	22	2.68	843	16.6	30,238
23	23	2.80	844	16.6	30,286
24	24	2.92	845	16.6	30,357
25	25	3.05	846	16.7	30,547
26	26	3.17	847	16.8	30,676
27	27	3.29	848	16.9	30,759
28	28	3.41	849	16.9	30,847
29	29	3.53	850	16.9	30,928
30	30	3.65	851	21.1	38,428
31	31	3.78	852	21.1	38,506
32	32	3.90	853	21.3	38,920
33	33	4.02	854	21.5	39,238
34	34	4.14	855	21.6	39,374
35	35	4.26	856	21.8	39,733

36	36	4.38	857	21.8	39,820
37	37	4.51	858	21.9	40,058
38	38	4.63	859	22.1	40,254
39	39	4.75	860	22.1	40,326
40	40	4.87	861	23.3	42,508
41	41	4.99	862	23.3	42,530
42	42	5.12	863	23.3	42,612
43	43	5.24	864	23.4	42,798
44	44	5.36	865	23.5	42,972
45	45	5.48	866	23.7	43,228
46	46	5.60	867	23.8	43,411
47	47	5.72	868	23.8	43,411
48	48	5.85	869	23.8	43,506
49	49	5.97	870	24.1	43,902
50	50	6.09	871	25.0	45,645