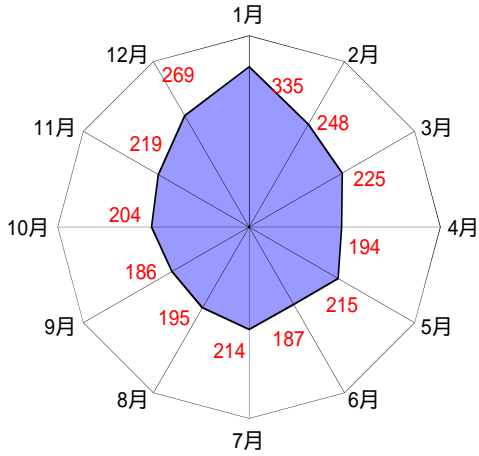


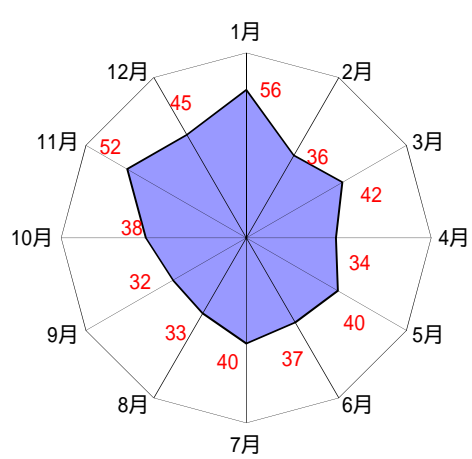
18.主要業種別・月別死傷災害発生状況(令和3年)

(新型コロナウイルス感染症を除く)

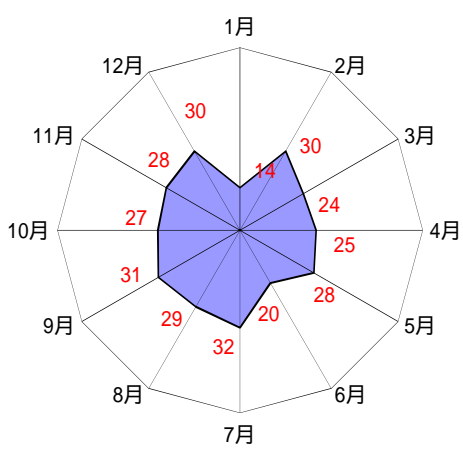
(1) 全産業 (2,691人)



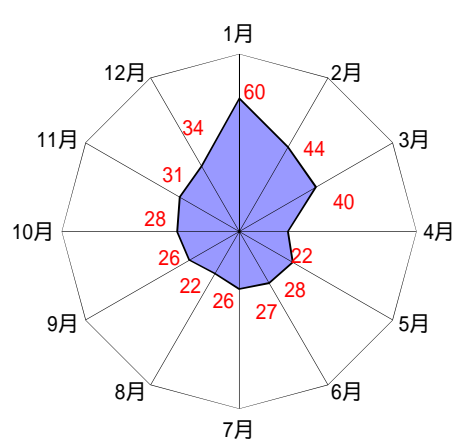
(2) 製造業 (485人)



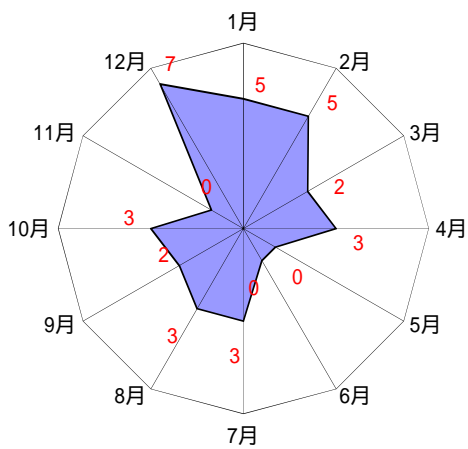
(3) 建設業 (318人)



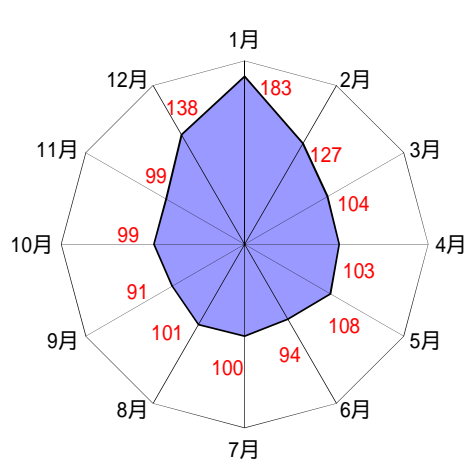
(4) 陸上貨物運送事業 (388人)



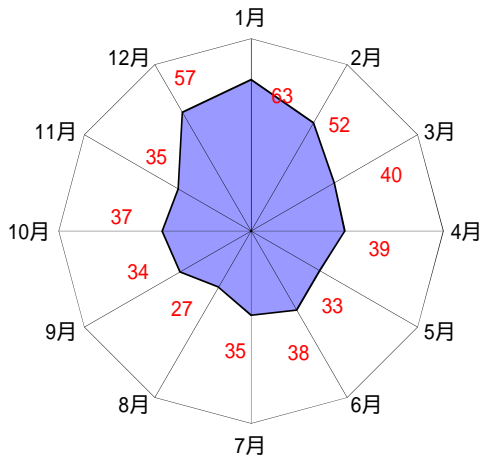
(5) 林業 (33人)



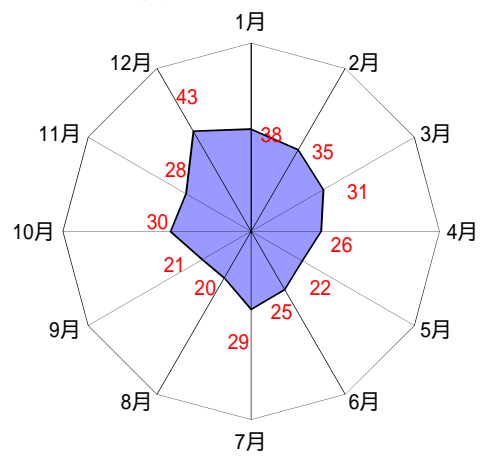
(6) 第三次産業 (1,347人)



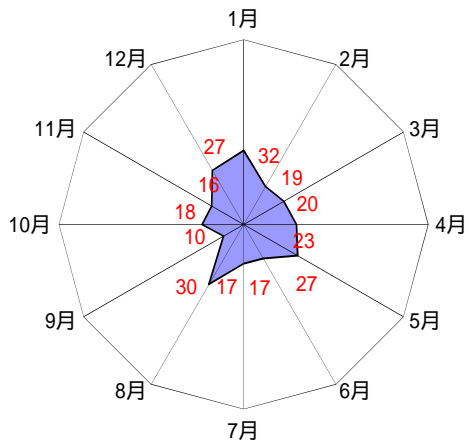
(7) 商業 (490人)



(8) 小売業 (348人)



(9) 社会福祉施設 (256人)



(10) 飲食店 (92人)

