

令和元年
労働災害発生状況（確定版）

大河原労働基準監督署

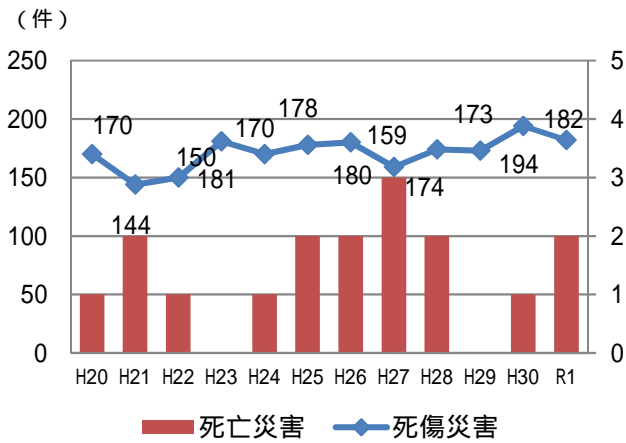
掲載業種

- 1 . 全業種
- 2 . 製造業
- 3 . 建設業
- 4 . 運輸交通業
- 5 . 林業
- 6 . 社会福祉施設
- 7 . 商業

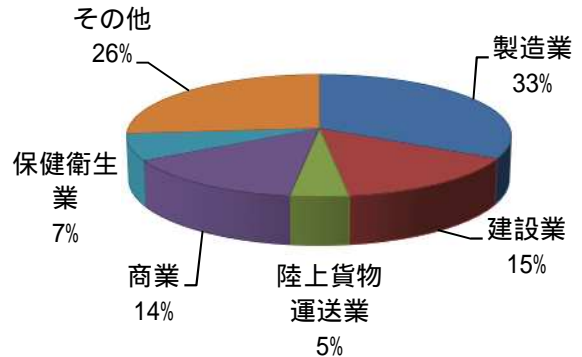
労働者死傷病報告（休業4日以上）による災害統計である

1. 令和元年労働災害発生状況（全業種）

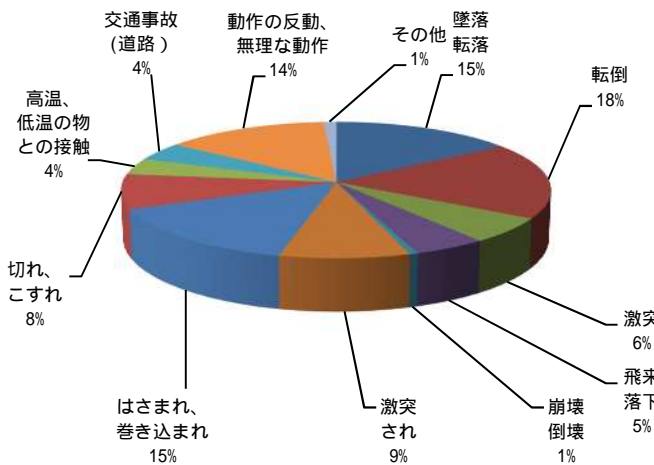
労働災害の推移



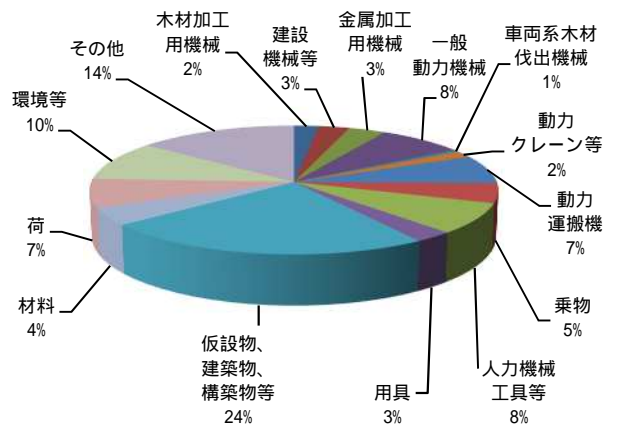
業種別労働災害発生状況



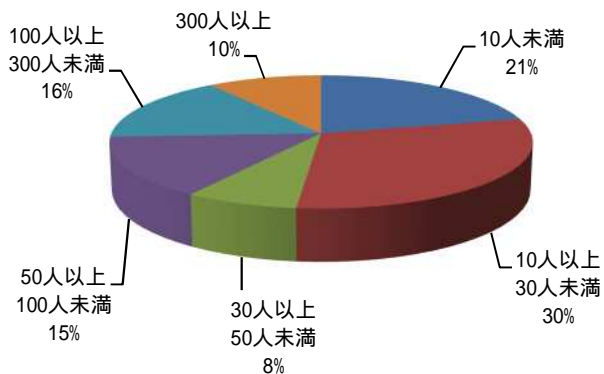
事故の型別



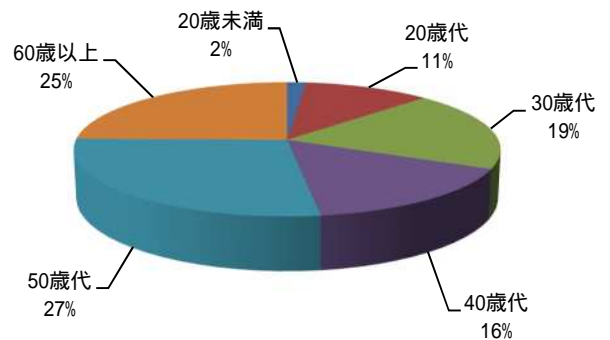
起因物別



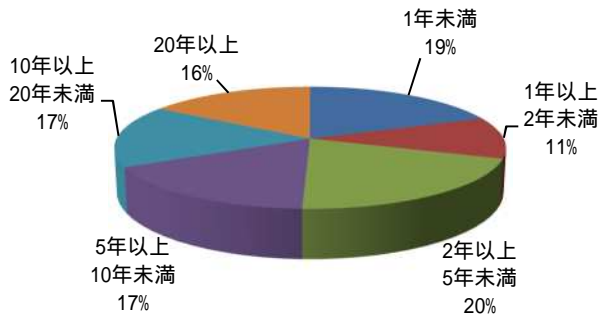
事業場規模別



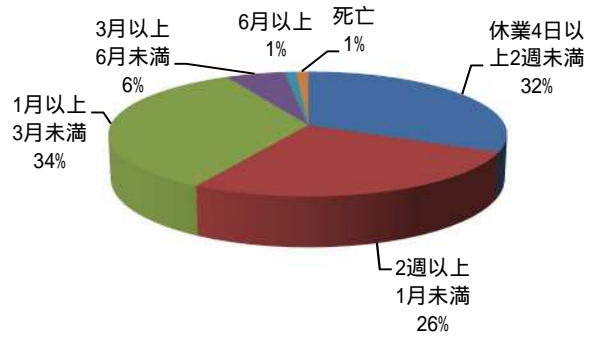
年齢別



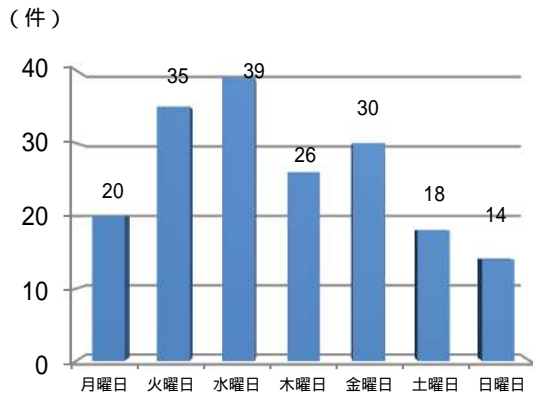
経験年数別



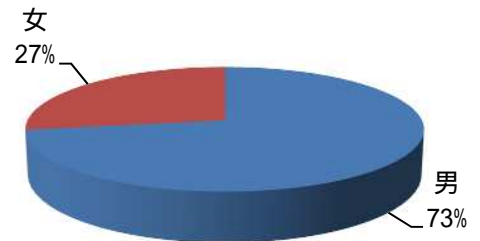
被災程度別



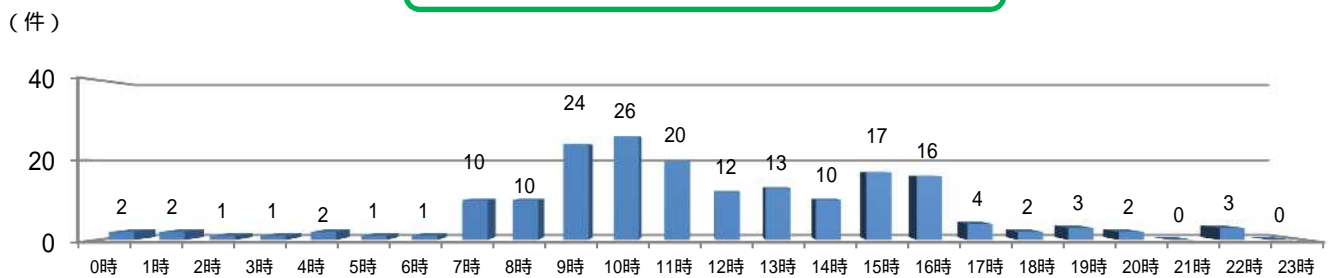
曜日別



性別の状況

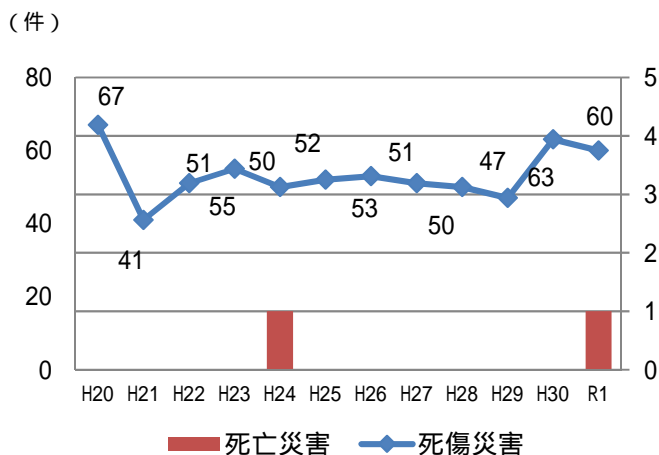


発生時間別の状況

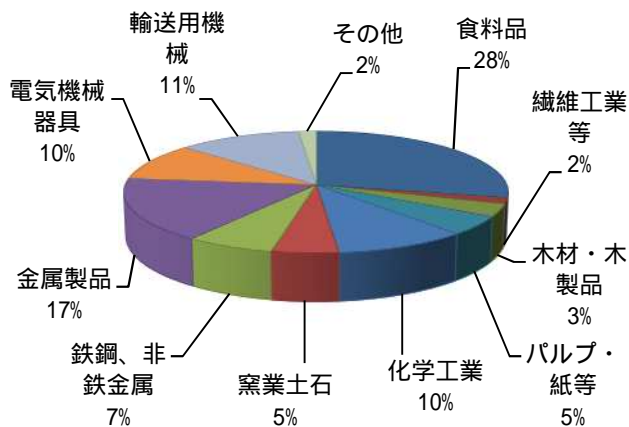


2. 令和元年労働災害発生状況（製造業）

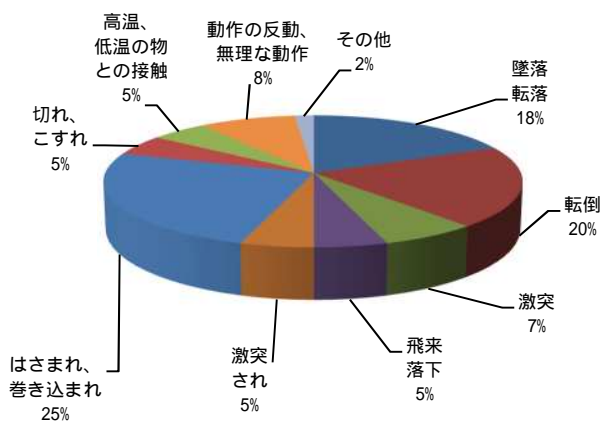
労働災害の推移



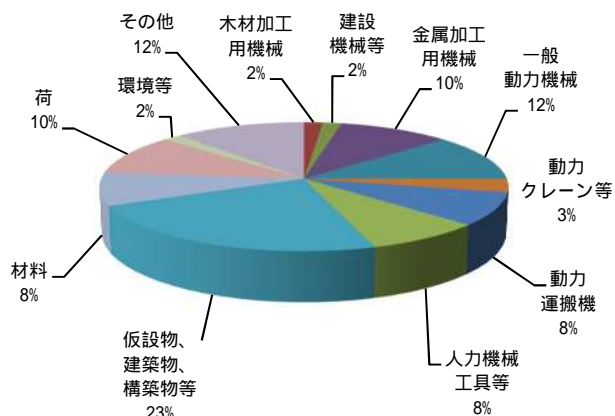
業種別労働災害発生状況



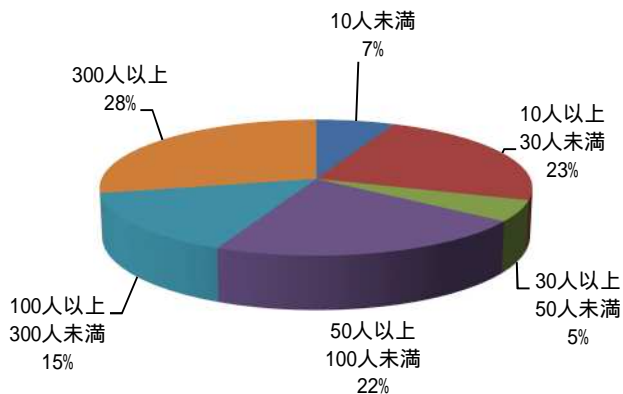
事故の型別



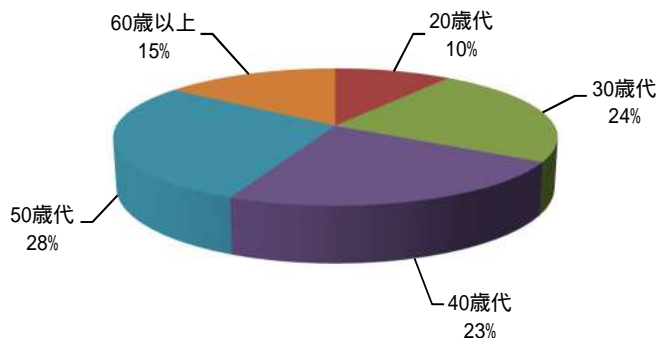
起因物別



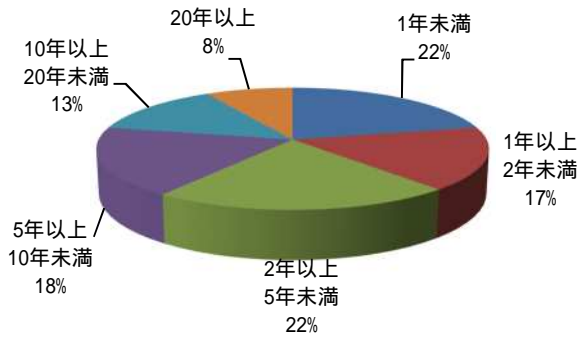
事業場規模別



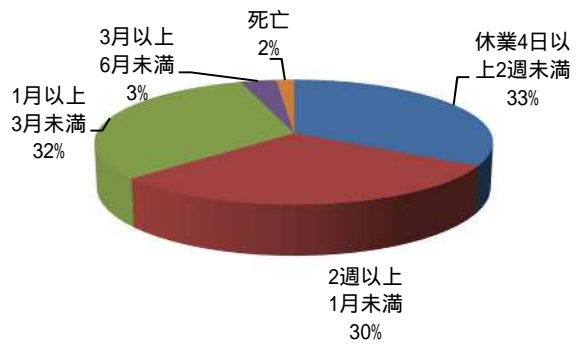
年齢別



経験年数別

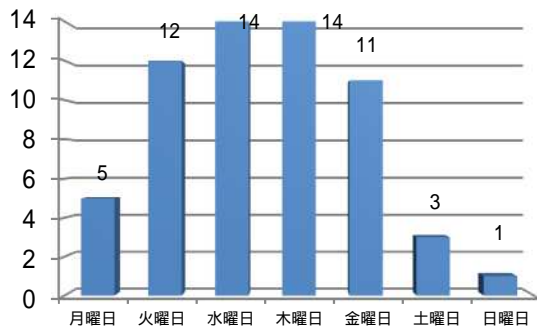


被災程度別

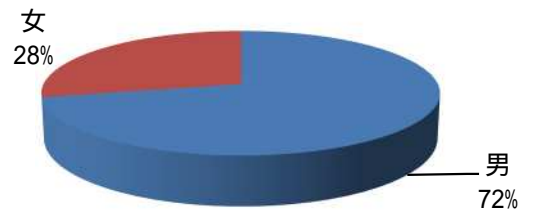


曜日別

(件)

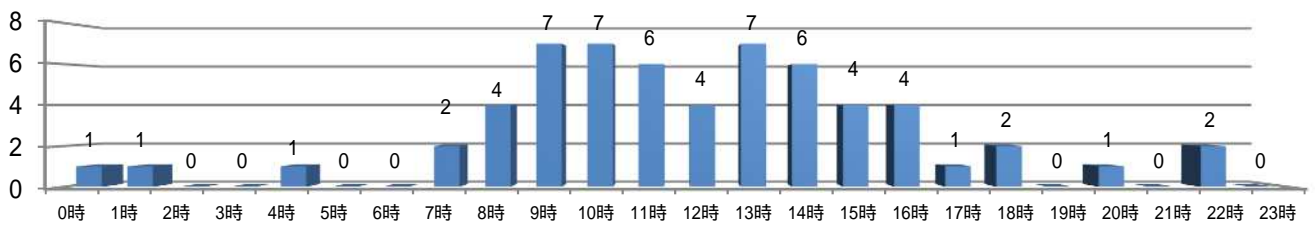


性別の状況



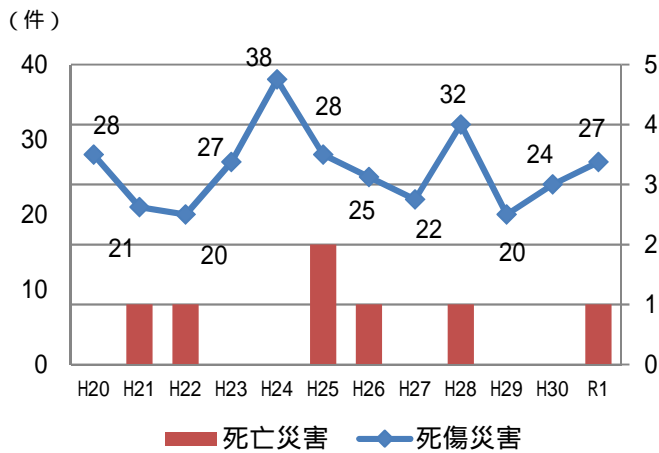
発生時間別の状況

(件)

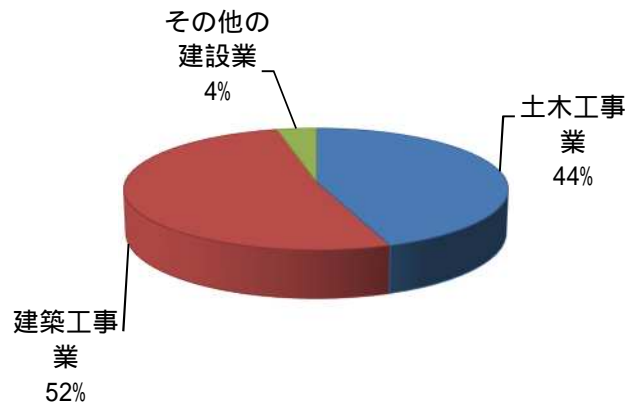


3. 令和元年労働災害発生状況（建設業）

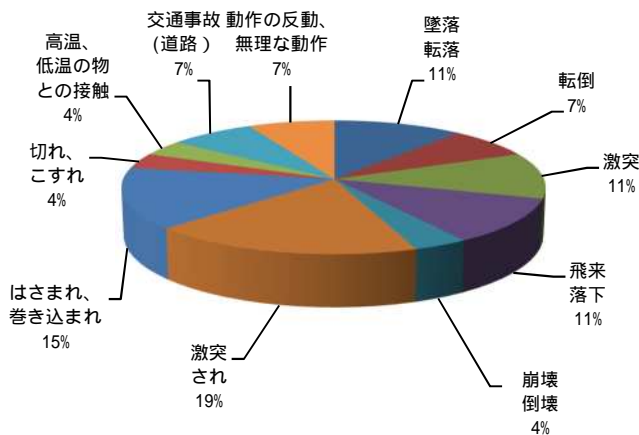
労働災害の推移



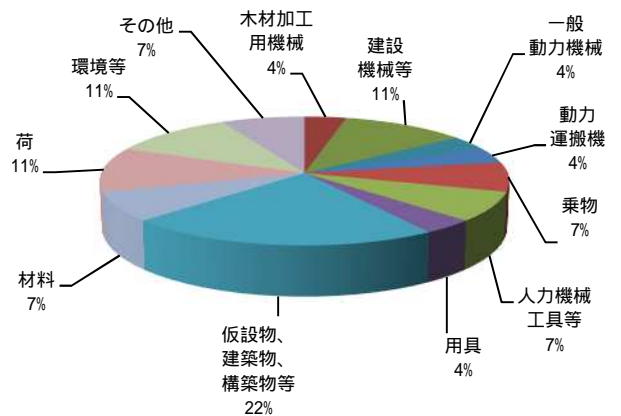
業種別労働災害発生状況



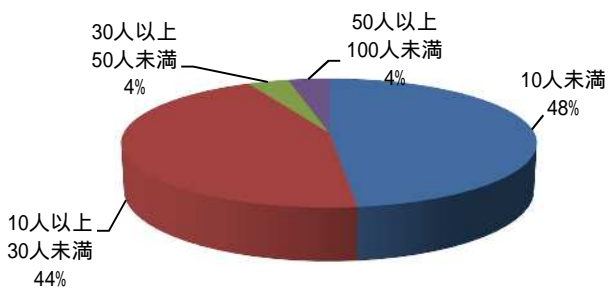
事故の型別



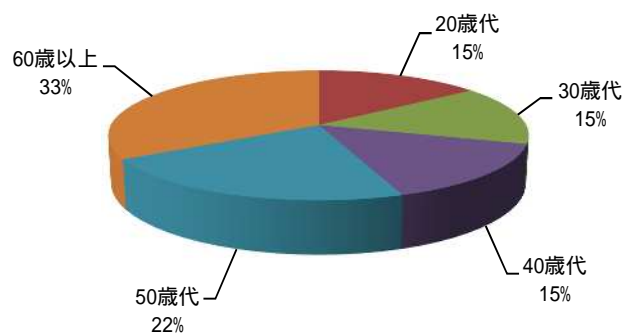
起因物別



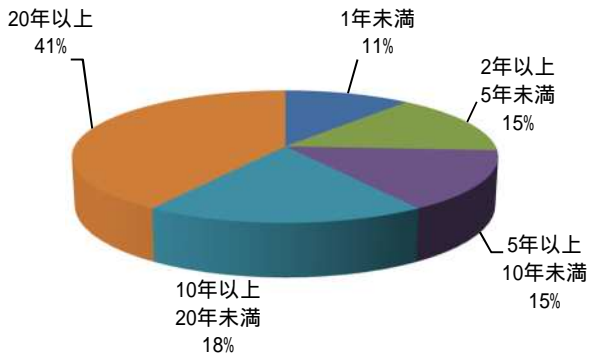
事業場規模別



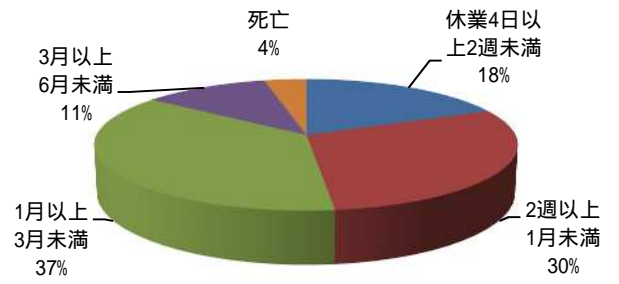
年齢別



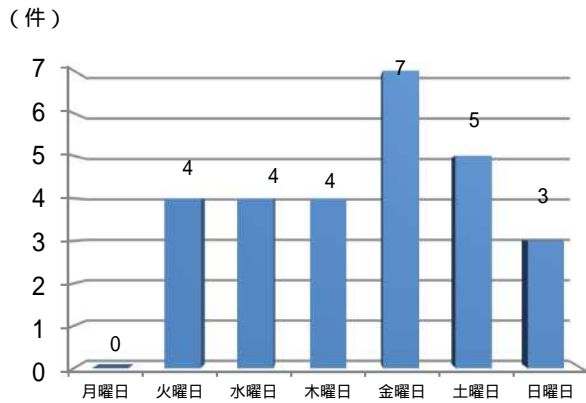
経験年数別



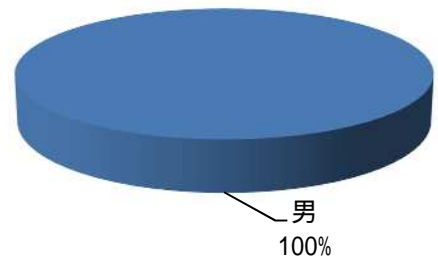
被災程度別



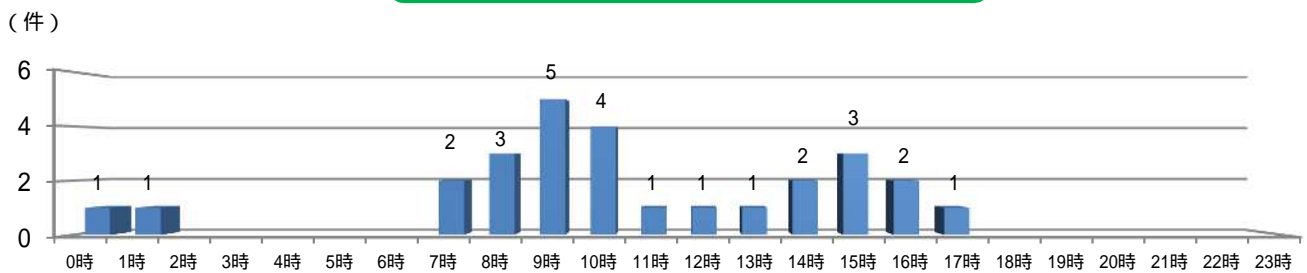
曜日別



性別の状況

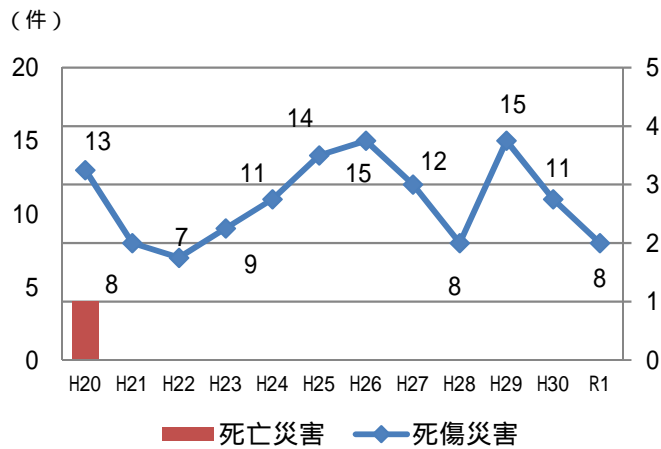


発生時間別の状況

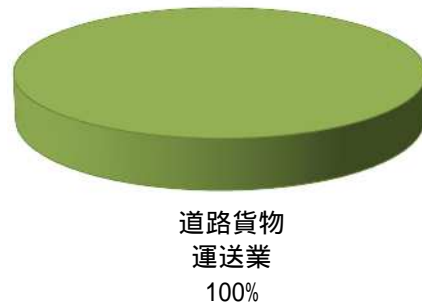


4. 令和元年労働災害発生状況（運輸交通業）

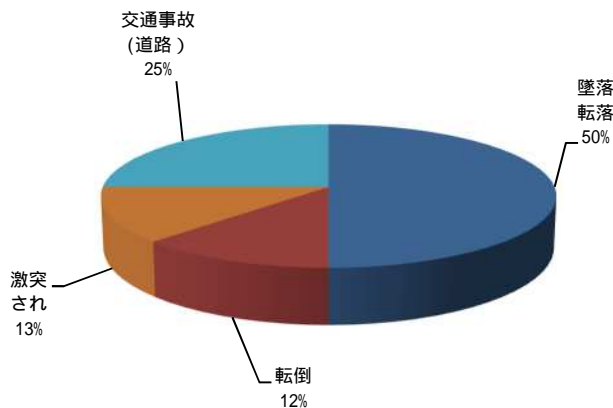
労働災害の推移



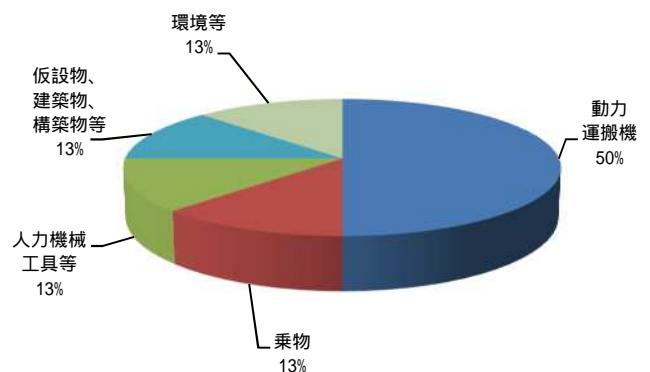
業種別労働災害発生状況



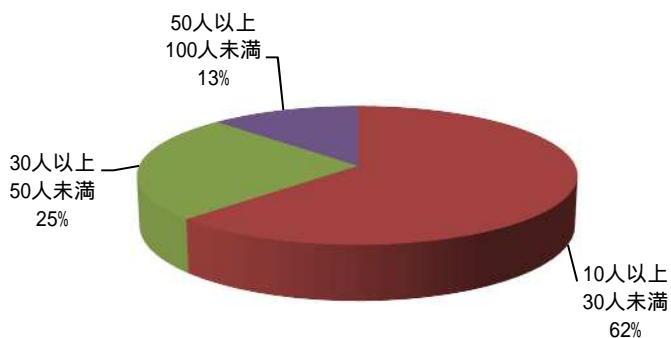
事故の型別



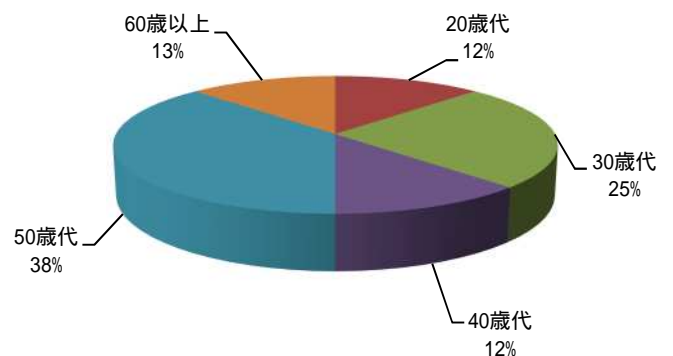
起因物別



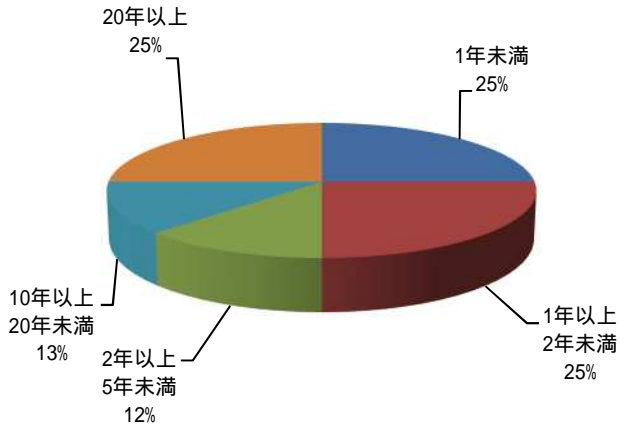
事業場規模別



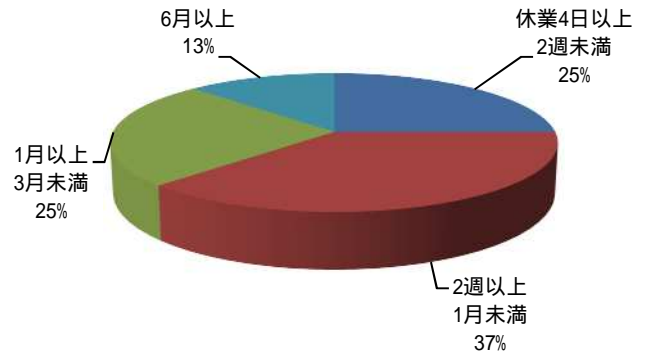
年齢別



経験年数別

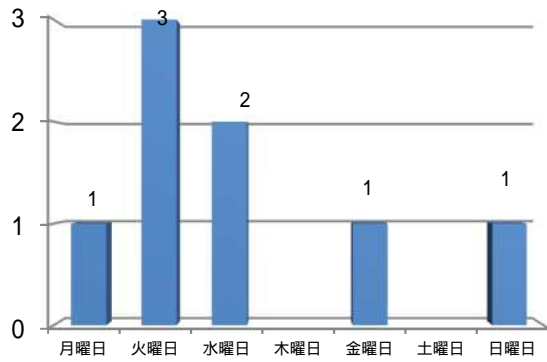


被災程度別

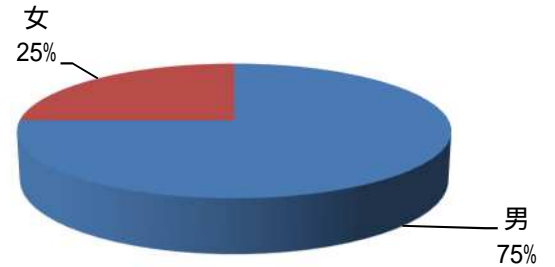


曜日別

(件)

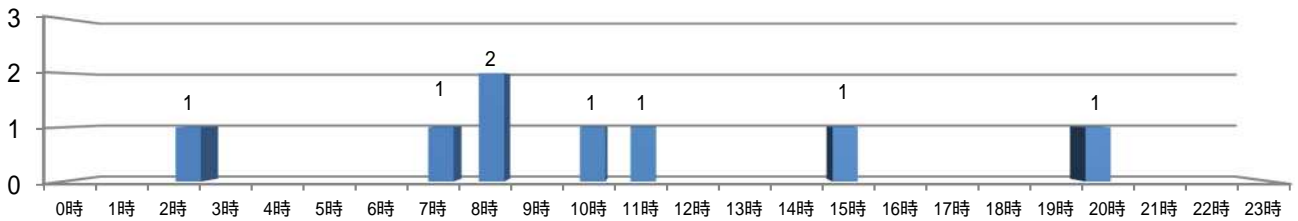


性別の状況



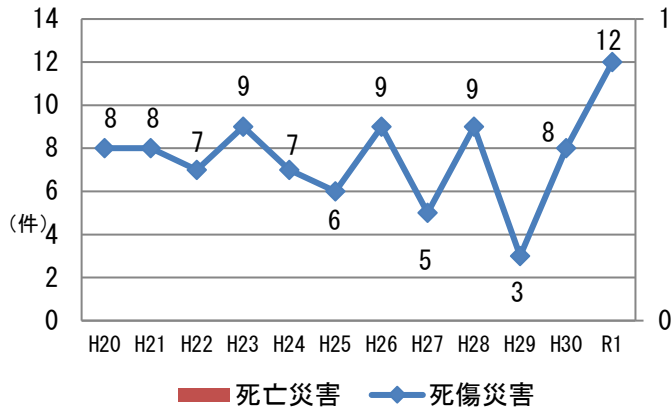
発生時間別の状況

(件)

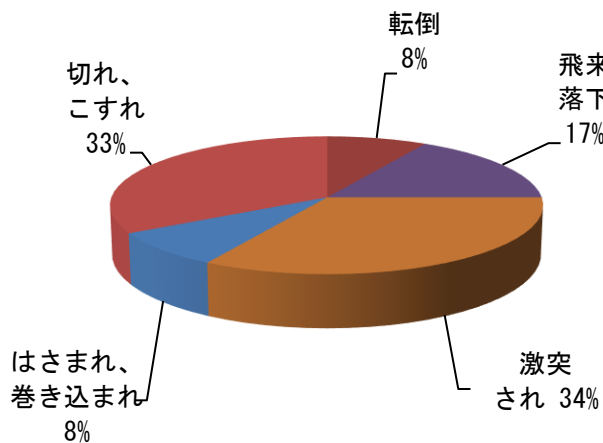


5. 令和元年労働災害発生状況（林業）

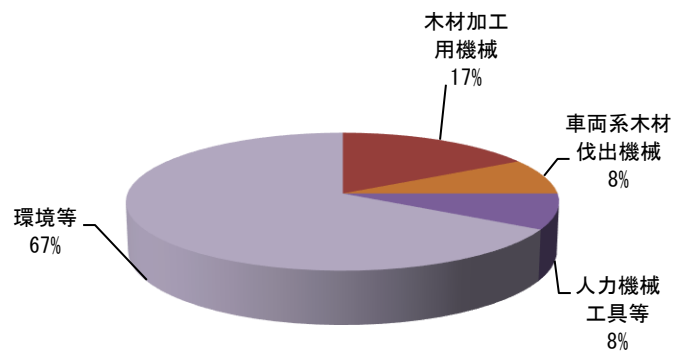
労働災害の推移



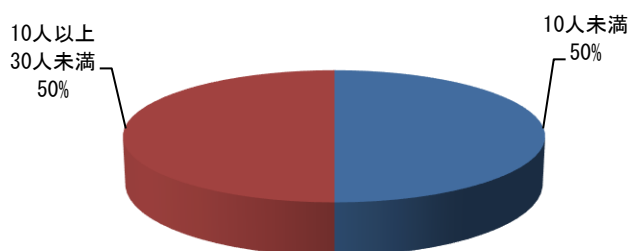
事故の型別



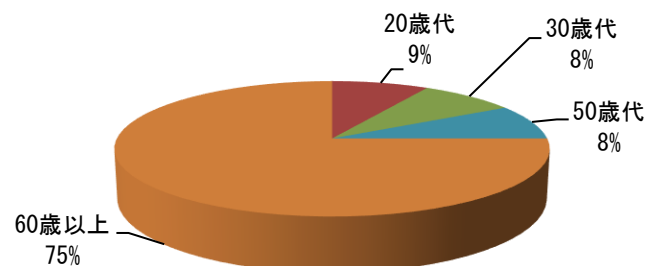
起因物別



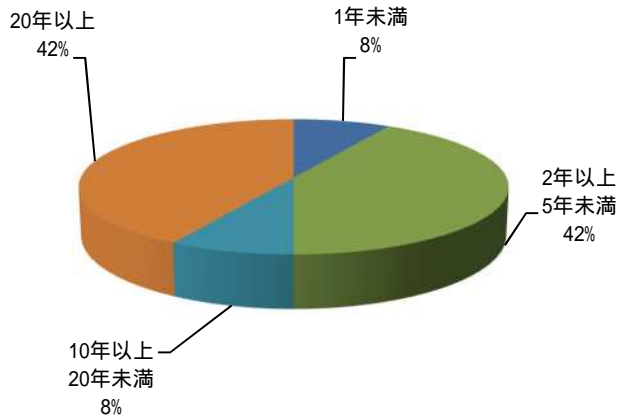
事業場規模別



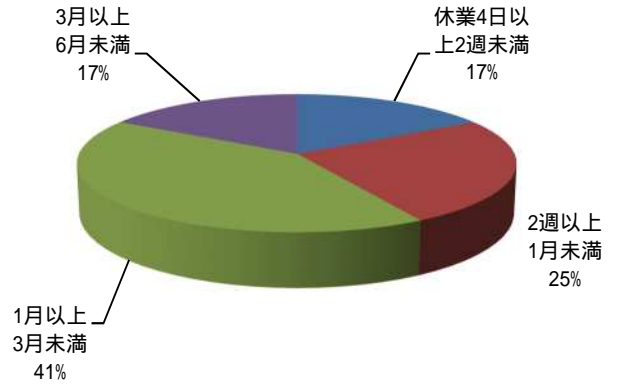
年齢別



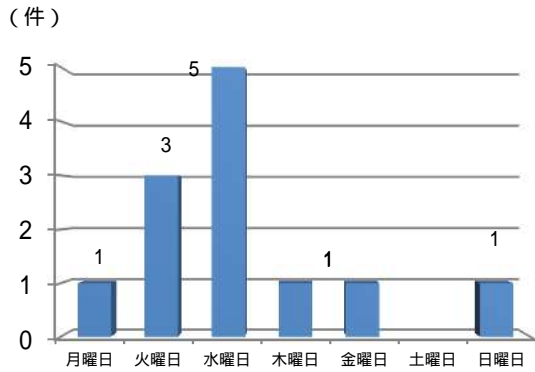
経験年数別



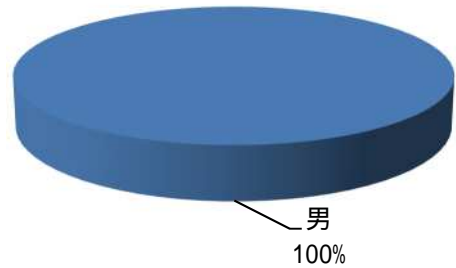
被災程度別



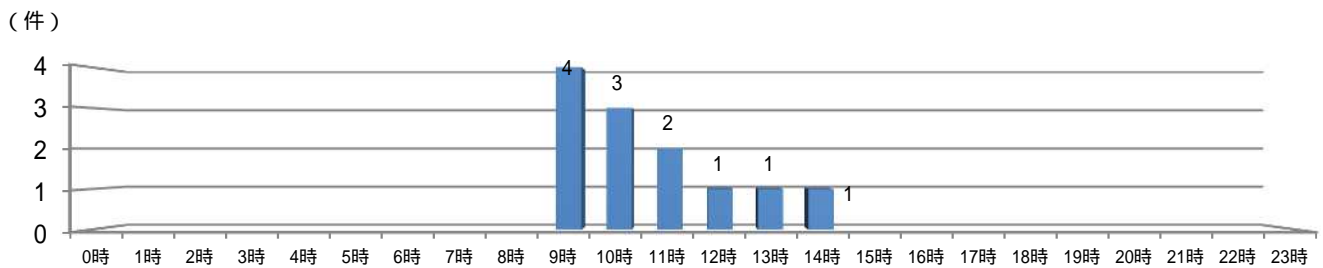
曜日別



性別の状況

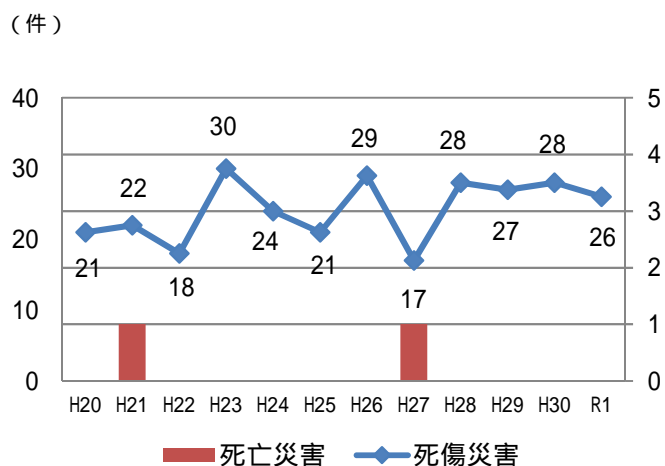


発生時間別の状況

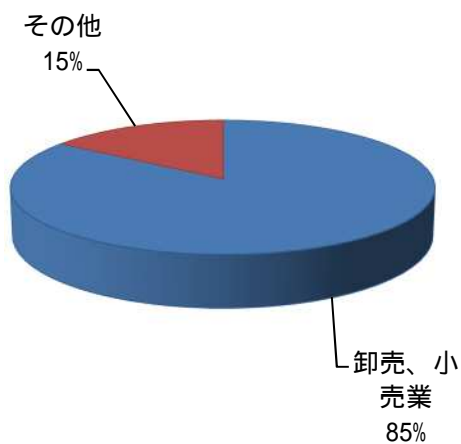


6. 令和元年労働災害発生状況（商業）

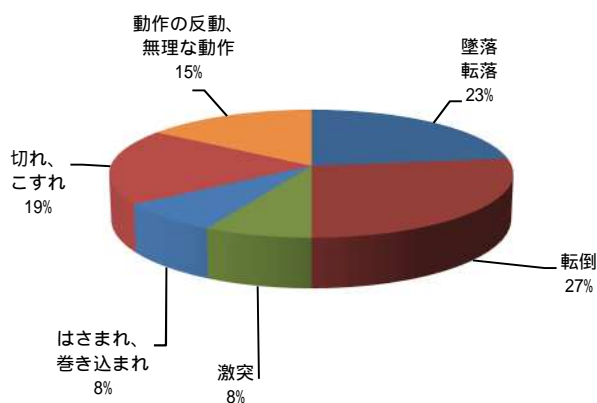
労働災害の推移



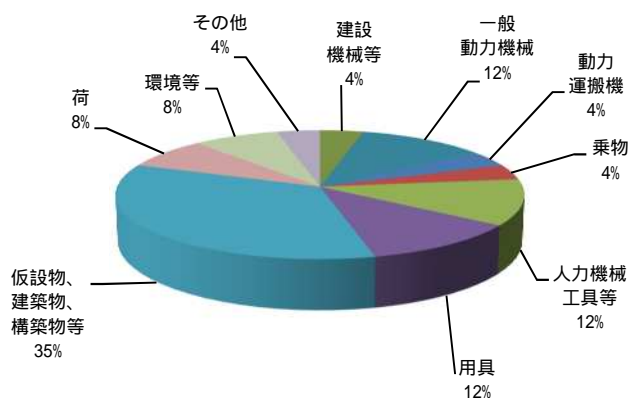
業種別労働災害発生状況



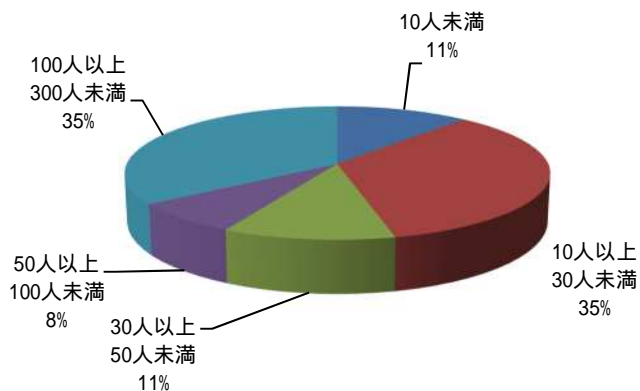
事故の型別



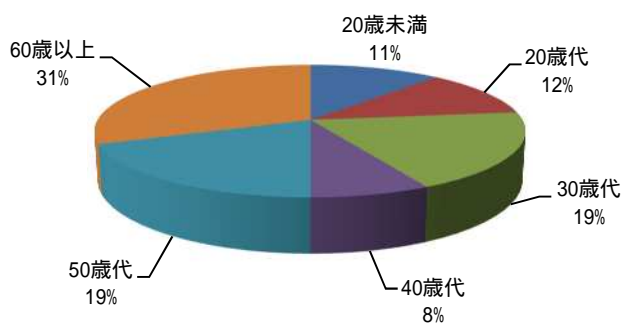
起因物別



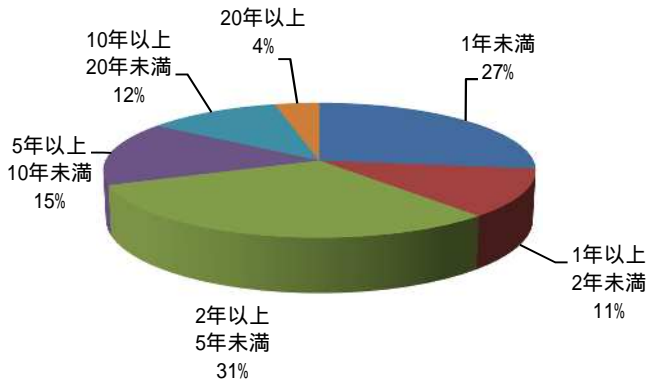
事業場規模別



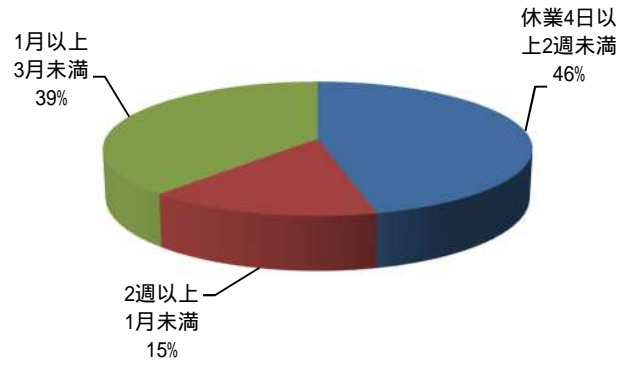
年齢別



経験年数別

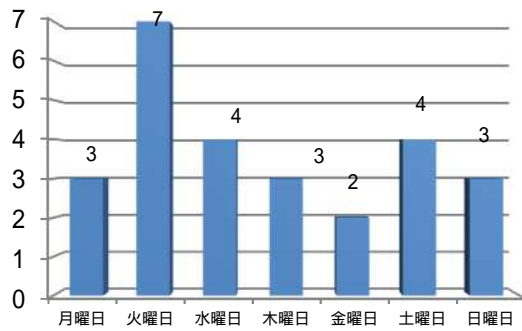


被災程度別

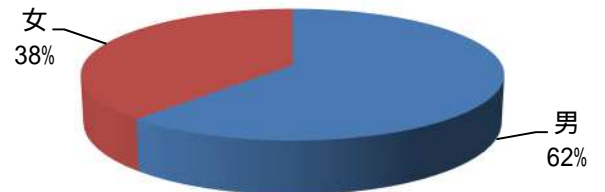


曜日別

(件)

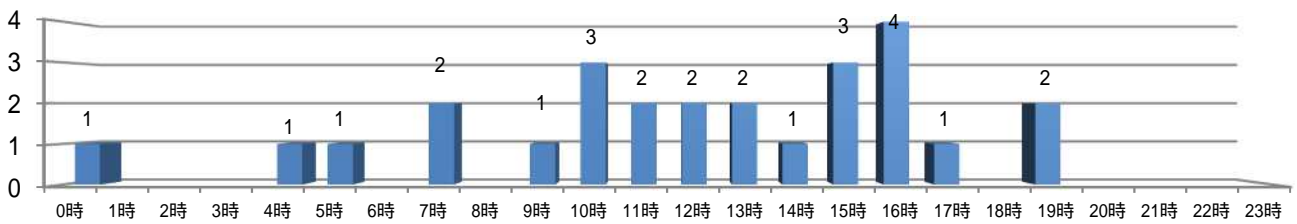


性別の状況



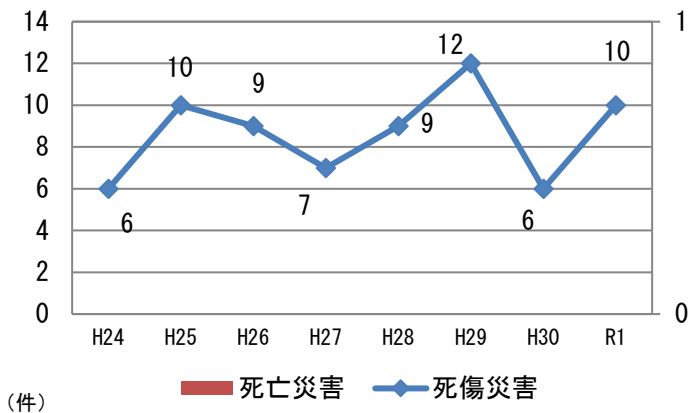
発生時間別の状況

(件)

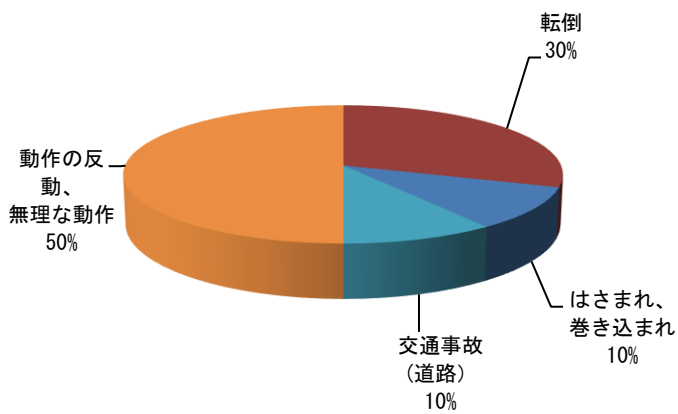


7. 令和元年労働災害発生状況（社会福祉施設）

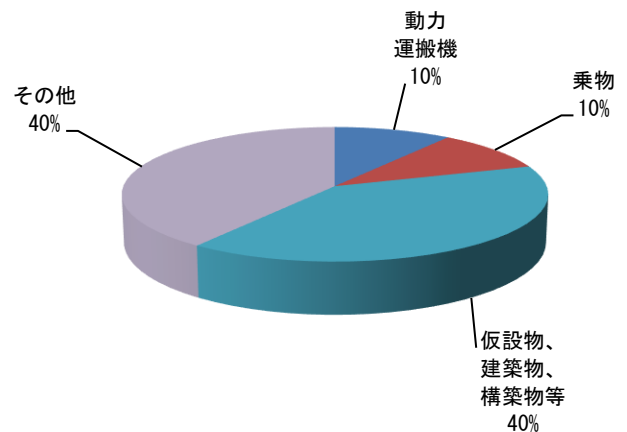
労働災害の推移



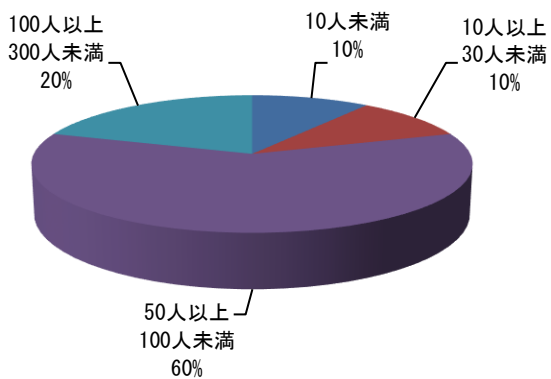
事故の型別



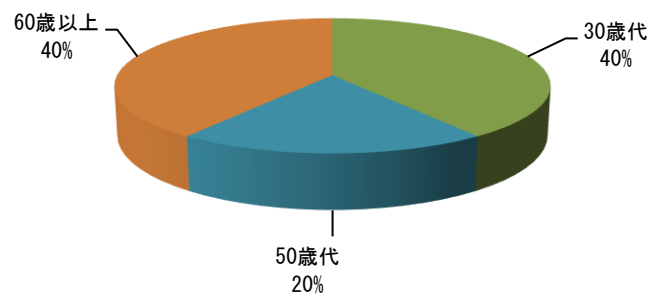
起因物別



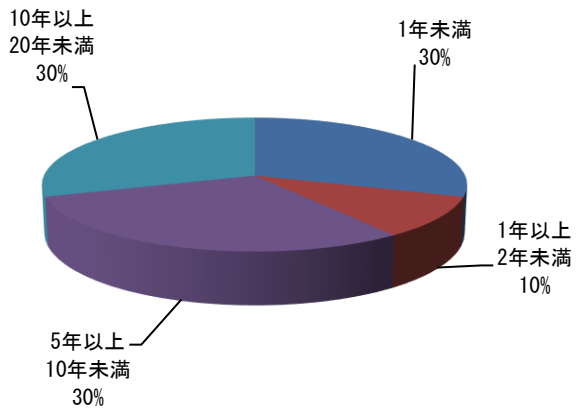
事業場規模別



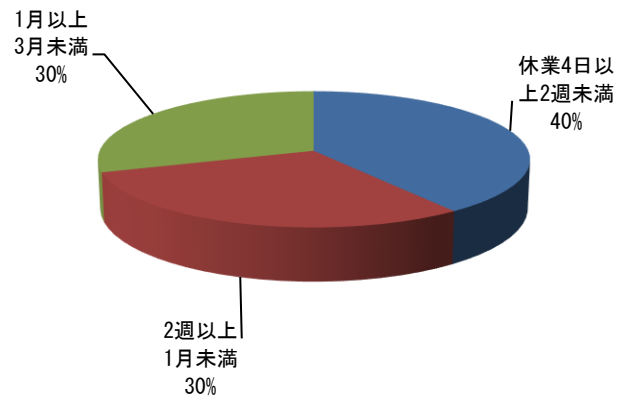
年齢別



経験年数別

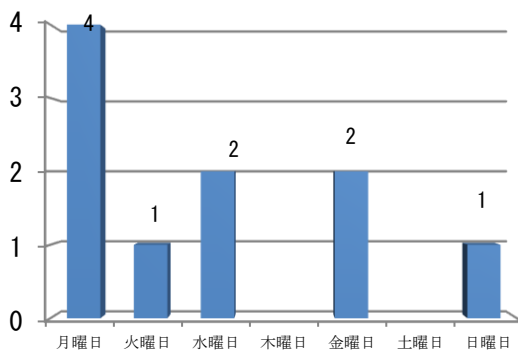


被災程度別

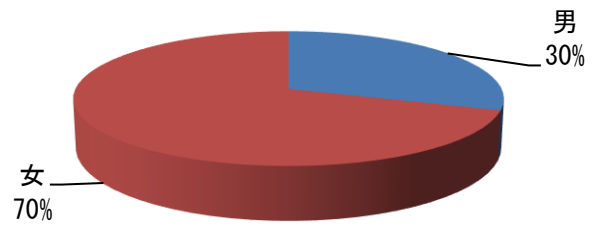


曜日別

(件)



性別の状況



発生時間別の状況

(件)

