

京都地方最低賃金審議会
令和6年度第1回
京都府最低賃金専門部会

令和6年7月26日(金)午後1時30分から午後4時00分まで(予定)

京都労働局 6階大会議室

【議事次第】

- 1 開会
- 2 部会長及び部会長代理の選出について
- 3 京都地方最低賃金審議会 京都府最低賃金専門部会の公開について
- 4 令和6年度 京都府最低賃金の改正について

【資料一覧】

- | | |
|-------------------------------|------|
| 1 令和6年度 京都府最低賃金専門部会 委員名簿 | p. 1 |
| 2 京都地方最低賃金審議会 京都府最低賃金専門部会運営規程 | p. 2 |
| 3 令和6年度 賃金実態調査結果 | p. 3 |
| 4 京都府最低賃金の推移 | p.46 |

令和6年度 京都府最低賃金専門部会 委員名簿

令和6年7月23日任命

	氏名	現職
公益代表委員	カワハラ ミキ 河原 美紀	京都府社会保険労務士会 副会長
	サクライ ジュンリ 櫻井 純理	立命館大学 産業社会学部 教授
	ミヤマ マサコ 三山 雅子	同志社大学 社会学部 教授
労働者代表委員	オオニシ ミキコ 大西 幹子	連合京都職員
	オオニシ ミノル 大西 稔	三菱自動車工業労働組合 京都支部 支部長 日本労働組合総連合会京都府連合会 副会長 自動車総連京都地方協議会 議長
	カドノ アキヨシ 門野 昭善	UAゼンセン 京都府支部 次長
使用者代表委員	チハラ カツヒコ 千原 克彦	NISSHA株式会社 内部監査室長
	ヌマタ ユキヒロ 沼田 行博	京都府中小企業団体中央会 専務理事
	フカザワ シンスケ 深沢 信介	株式会社ワコール 執行役員 人事総務本部長

(五十音順)

京都地方最低賃金審議会 京都府最低賃金専門部会運営規程

第1条 この規程は、京都地方最低賃金審議会京都府最低賃金専門部会（以下「専門部会」という。）の議事の運営に関し、最低賃金法及び最低賃金審議会令に定めるもののほか、必要な事項について定めるものである。

第2条 専門部会の会議（以下「会議」という。）は、部会長が必要と認めたときのほか、京都労働局長（以下「局長」という。）又は3人以上の委員から開催の請求があったとき、部会長が招集する。ただし、第1回会議は、局長が招集する。

2 前項の規定により、局長又は委員が会議の開催を請求しようとする場合には、付議事項及び希望期日を少なくとも当該期日の一週間前までに、部会長に通知しなければならない。

3 部会長は、会議を招集しようとするときには、緊急やむを得ない場合のほか、少なくとも3日前までに、付議事項、日時及び場所を委員に通知するとともに、局長に通知するものとする。

第3条 委員は、病気その他の事由によって、会議に出席できないときは、その旨を部会長に適当な方法で速報するものとする。

2 委員は、旅行その他の事由によって長期間不在となるときは、あらかじめ部会長に適当な方法で通知するものとする。

第4条 委員は、会議において発言しようとするときは、部会長の許可を受けなければならない。

第5条 会議は、原則として非公開とする。

第6条 会議の議事については、議事要旨を作成するものとする。

2 議事要旨は、原則として公開する。

第7条 部会長は、専門部会において、最低賃金法及び最低賃金審議会令に基づいて決議を行ったときは、審議会の会長に報告するものとする。

第8条 この規程の改廃は、専門部会の議決に基づいて行う。

附記 この規程は、平成13年7月3日から施行する。

令和6年度
賃金実態調査結果
地域別最低賃金対象産業

京都労働局 賃金室
令和6年7月17日作成

- | | |
|-----------|---|
| 1 調査の対象 | 京都府最低賃金適用の産業に属する事業場（製造業、新聞業・出版業、卸小売業、飲食・宿泊業、医療・福祉、他に分類されないサービス業等）について、本省の抽出基準に従い調査したもの。 |
| 2 調査の対象期間 | 令和6年6月分賃金 |
| 3 集計 | 賃金額は、所定内賃金から通勤手当・精皆勤手当・家族手当を除外したもの。 |
| 4 調査事業場数 | 1,243事業場（労働者数：14,560人） |

令和6年度 賃金実態調査結果 目次

令和6年度「賃金実態調査について」	・・・	p.3
総括表の見方	・・・	p.4
総括表		
1 総括表(1)(規模別・年齢別総括表)		
就業形態		
全ての労働者	・・・	p.5
一般労働者	・・・	p.11
パート労働者	・・・	p.17
2 総括表(2)(男女別・年齢別総括表)		
就業形態		
全ての労働者	・・・	p.23
一般労働者	・・・	p.28
パート労働者	・・・	p.33
累積構成比表及び分位数表		
1 第1表 令和6年度 就業形態別累積構成比表	・・・	p.38
2 第2表 令和6年度 規模別累積構成比表	・・・	p.39
3 第3表 令和6年度 年齢別累積構成比表	・・・	p.40
4 第4表 令和6年度 規模別・年齢別分位数表	・・・	p.41
5 第5表 令和3年度から令和6年度までの規模別・年齢別分位数表(全て)	・・・	p.42
6 第6表 令和3年度から令和6年度までの規模別・年齢別分位数表(パート)	・・・	p.43

令和6年度 賃金実態調査について

賃金実態調査について

本調査は、京都府最低賃金の審議資料とするため、京都府下における製造業及び新聞業・出版業については100人未満、それ以外の業種については原則30人未満の事業場から本省の抽出基準に従い賃金実態の調査を行っているものである。

本年度は、令和6年6月度における1,243事業場（労働者数14,560人）から回答を得た。

総括表の説明

数値の見方については、p.4（総括表の見方）を参照されたい。

1 総括表（1）について

総括表（1）（p.5～22）は、調査結果を「事業場の規模別及び年齢別」に出力したものである。

p.5～10は、「全ての労働者」についての数字

p.11～16は、「一般労働者」についての数字

p.17～22は、「パート労働者」についての数字

が記載されている。

2 総括表（2）について

総括表（2）（p.23～37）は、調査結果を「男女別及び年齢別」に出力したものである。

p.23～27は、「全ての労働者」についての数字

p.28～32は、「一般労働者」についての数字

p.33～37は、「パート労働者」についての数字

が記載されている。

調査結果の概要

1 時間額 998円から1,109円まで1円刻み、1,110円から1,199円まで10円刻み、1,200円から1,999円まで100円刻みとして統計を累計している。

労働者の就業形態別累積構成比は、一般労働者については、概ねなだらかに累積しているが、パート労働者については最低賃金近傍の1,010円に大きな段差が見られる。（p.38 第1表）

事業場の規模別累積構成比においても、事業場規模「1人～9人」と同「10人～29人」の1,010円に段差が見られる。（p.39 第2表）

労働者の年齢別累積構成比においては、年齢階層「18歳～19歳」の1,010円に大きな段差が見られる。（p.40 第3表）

2 分位数について（p.41～43 第4表～第6表）

現行の京都府最低賃金額1,008円とパート労働者の第1・20分位数が同値であることから、最低賃金額がパート労働者の賃金決定に影響している可能性が高いものと判断できる。

総括表の見方

産業(全て)

就業形態(全て)

1時間あたりの所定賃金額。時間額に換算した値

累積人数。調査人数に復元率を用いて計算した人数。京都府下の同条件で雇用される労働者数である。

累積比率。当該金額が全体の何%までの比率に達しているかを示している。1,008円の賃金額であれば全体の6.2%が達していることを示す。

1時間あたり所定内賃金額(3手当を除く)	合計	規模別			年齢別					
		1~9人	10~29人	30~99人	17歳以下	18~19歳	20~54歳	55~59歳	60~64歳	65歳以上
円 1008-1008	24,525 (6.2)	7,946 (5.2)	15,462 (7.8)	1,118 (2.5)	1,104 (31.8)	2,429 (18.9)	13,008 (5.0)	1,696 (4.2)	2,072 (6.4)	4,215 (8.8)
円 1009-1009	25,677 (6.5)	7,946 (5.2)	16,602 (8.4)	1,129 (2.5)	1,104 (31.8)	2,429 (18.9)	13,020 (5.0)	1,696 (4.2)	2,416 (7.5)	5,011 (10.4)
第1・20分位数	1008	1,008	1,008	1,010	1,008	1,008	1,008	1,010	1,008	1,008
第1・10分位数	1010	1,010	1,010	1,050	1,008	1,008	1,010	1,020	1,010	1,009
第1・4分位数	1064	1,080	1,050	1,136	1,008	1,010	1,086	1,090	1,050	1,040
中位数	1,250	1,266	1,200	1,468	1,010	1,040	1,300	1,350	1,190	1,180

中央値(メディアン)。データを値の小さいほうから順に並べたときにちょうど半分にデータを分ける値をいう。第2・4分位数と同じになる。中位数は1,250円

データを小さい順に並べて、下から1/4のところのデータを第1・4分位数、2/4のところのデータを第2・4分位数(中位数と同じ)、3/4のところのデータを第3・4分位数という。第1四分位数は1,064円

データを小さい順に並べて、下から1/20のところのデータ。第1・20分位数は1,008円

データを小さい順に並べた下から1/10のデータ。第1・10分位数は1,010円

総括表(1)(産業・就業形態別の賃金額階級別、規模別、地域別、年齢別表)

06年 総括表(1)(全ての労働者)

時間当り所定内賃金額 (3手当を除く)	合計	規模別(人)			年齢別(歳)					
		1~9	10~29	30以上	17以下	18~19	20~54	55~59	60~64	65以上
計	396,681	154,129	197,053	45,499	3,469	12,876	259,835	40,326	32,151	48,024
円	4,415	1,946	2,272	197	89	70	2,025	200	749	1,283
- 997	(1.1)	(1.3)	(1.2)	(0.4)	(2.6)	(0.5)	(0.8)	(0.5)	(2.3)	(2.7)
998 - 998	4,419	1,946	2,272	200	89	70	2,028	200	749	1,283
	(1.1)	(1.3)	(1.2)	(0.4)	(2.6)	(0.5)	(0.8)	(0.5)	(2.3)	(2.7)
999 - 999	4,419	1,946	2,272	200	89	70	2,028	200	749	1,283
	(1.1)	(1.3)	(1.2)	(0.4)	(2.6)	(0.5)	(0.8)	(0.5)	(2.3)	(2.7)
1000 - 1000	6,250	3,125	2,921	203	89	183	3,043	447	884	1,604
	(1.6)	(2.0)	(1.5)	(0.4)	(2.6)	(1.4)	(1.2)	(1.1)	(2.7)	(3.3)
1001 - 1001	6,250	3,125	2,921	203	89	183	3,043	447	884	1,604
	(1.6)	(2.0)	(1.5)	(0.4)	(2.6)	(1.4)	(1.2)	(1.1)	(2.7)	(3.3)
1002 - 1002	6,258	3,125	2,929	203	89	183	3,051	447	884	1,604
	(1.6)	(2.0)	(1.5)	(0.4)	(2.6)	(1.4)	(1.2)	(1.1)	(2.7)	(3.3)
1003 - 1003	6,261	3,125	2,929	207	89	187	3,051	447	884	1,604
	(1.6)	(2.0)	(1.5)	(0.5)	(2.6)	(1.4)	(1.2)	(1.1)	(2.7)	(3.3)
1004 - 1004	6,263	3,125	2,931	207	89	187	3,051	448	884	1,604
	(1.6)	(2.0)	(1.5)	(0.5)	(2.6)	(1.4)	(1.2)	(1.1)	(2.7)	(3.3)
1005 - 1005	6,352	3,190	2,932	230	89	187	3,076	513	884	1,604
	(1.6)	(2.1)	(1.5)	(0.5)	(2.6)	(1.4)	(1.2)	(1.3)	(2.7)	(3.3)
1006 - 1006	6,454	3,196	3,028	230	89	187	3,176	513	886	1,604
	(1.6)	(2.1)	(1.5)	(0.5)	(2.6)	(1.4)	(1.2)	(1.3)	(2.8)	(3.3)
1007 - 1007	6,454	3,196	3,028	230	89	187	3,176	513	886	1,604
	(1.6)	(2.1)	(1.5)	(0.5)	(2.6)	(1.4)	(1.2)	(1.3)	(2.8)	(3.3)
1008 - 1008	24,525	7,946	15,462	1,118	1,104	2,429	13,008	1,696	2,072	4,215
	(6.2)	(5.2)	(7.8)	(2.5)	(31.8)	(18.9)	(5.0)	(4.2)	(6.4)	(8.8)
1009 - 1009	25,677	7,946	16,602	1,129	1,104	2,429	13,020	1,696	2,416	5,011
	(6.5)	(5.2)	(8.4)	(2.5)	(31.8)	(18.9)	(5.0)	(4.2)	(7.5)	(10.4)
1010 - 1010	52,767	15,992	34,458	2,317	2,094	5,307	28,813	3,178	4,657	8,718
	(13.3)	(10.4)	(17.5)	(5.1)	(60.3)	(41.2)	(11.1)	(7.9)	(14.5)	(18.2)
1011 - 1011	53,695	15,992	35,375	2,328	2,094	5,313	29,274	3,365	4,839	8,810
	(13.5)	(10.4)	(18.0)	(5.1)	(60.3)	(41.3)	(11.3)	(8.3)	(15.1)	(18.3)
1012 - 1012	53,958	15,994	35,572	2,392	2,094	5,323	29,419	3,365	4,893	8,864
	(13.6)	(10.4)	(18.1)	(5.3)	(60.3)	(41.3)	(11.3)	(8.3)	(15.2)	(18.5)
1013 - 1013	54,190	16,065	35,723	2,402	2,094	5,323	29,515	3,417	4,903	8,938
	(13.7)	(10.4)	(18.1)	(5.3)	(60.3)	(41.3)	(11.4)	(8.5)	(15.3)	(18.6)
1014 - 1014	54,496	16,065	36,001	2,430	2,094	5,323	29,718	3,520	4,903	8,938
	(13.7)	(10.4)	(18.3)	(5.3)	(60.3)	(41.3)	(11.4)	(8.7)	(15.3)	(18.6)
1015 - 1015	55,074	16,137	36,476	2,461	2,094	5,323	30,109	3,702	4,903	8,942
	(13.9)	(10.5)	(18.5)	(5.4)	(60.3)	(41.3)	(11.6)	(9.2)	(15.3)	(18.6)
1016 - 1016	55,759	16,137	37,129	2,493	2,094	5,323	30,244	3,794	5,104	9,201
	(14.1)	(10.5)	(18.8)	(5.5)	(60.3)	(41.3)	(11.6)	(9.4)	(15.9)	(19.2)
1017 - 1017	55,970	16,137	37,220	2,612	2,094	5,323	30,393	3,848	5,104	9,209
	(14.1)	(10.5)	(18.9)	(5.7)	(60.3)	(41.3)	(11.7)	(9.5)	(15.9)	(19.2)
1018 - 1018	56,641	16,472	37,547	2,622	2,094	5,323	30,817	4,028	5,104	9,275
	(14.3)	(10.7)	(19.1)	(5.8)	(60.3)	(41.3)	(11.9)	(10.0)	(15.9)	(19.3)
1019 - 1019	56,852	16,472	37,747	2,633	2,094	5,323	31,023	4,028	5,109	9,275
	(14.3)	(10.7)	(19.2)	(5.8)	(60.3)	(41.3)	(11.9)	(10.0)	(15.9)	(19.3)
1020 - 1020	61,788	17,686	41,098	3,004	2,094	5,602	34,015	4,508	5,504	10,065
	(15.6)	(11.5)	(20.9)	(6.6)	(60.3)	(43.5)	(13.1)	(11.2)	(17.1)	(21.0)
1021 - 1021	61,815	17,686	41,116	3,014	2,094	5,602	34,034	4,516	5,504	10,065
	(15.6)	(11.5)	(20.9)	(6.6)	(60.3)	(43.5)	(13.1)	(11.2)	(17.1)	(21.0)

総括表(1)(産業・就業形態別の賃金額階級別、規模別、地域別、年齢別表)

06年 総括表(1)(全ての労働者)

時間当り所定内賃金額 (3手当を除く)	合計	規模別(人)			年齢別(歳)					
		1~9	10~29	30以上	17以下	18~19	20~54	55~59	60~64	65以上
1022 - 1022	62,363 (15.7)	17,750 (11.5)	41,589 (21.1)	3,024 (6.6)	2,094 (60.3)	5,602 (43.5)	34,312 (13.2)	4,607 (11.4)	5,507 (17.1)	10,240 (21.3)
1023 - 1023	62,543 (15.8)	17,839 (11.6)	41,680 (21.2)	3,024 (6.6)	2,094 (60.3)	5,691 (44.2)	34,404 (13.2)	4,607 (11.4)	5,507 (17.1)	10,240 (21.3)
1024 - 1024	62,993 (15.9)	17,904 (11.6)	42,018 (21.3)	3,071 (6.7)	2,094 (60.3)	5,691 (44.2)	34,590 (13.3)	4,795 (11.9)	5,520 (17.2)	10,303 (21.5)
1025 - 1025	63,400 (16.0)	18,014 (11.7)	42,121 (21.4)	3,265 (7.2)	2,094 (60.3)	5,703 (44.3)	34,937 (13.4)	4,813 (11.9)	5,535 (17.2)	10,319 (21.5)
1026 - 1026	63,785 (16.1)	18,175 (11.8)	42,284 (21.5)	3,326 (7.3)	2,094 (60.3)	5,792 (45.0)	34,945 (13.4)	4,880 (12.1)	5,589 (17.4)	10,485 (21.8)
1027 - 1027	63,940 (16.1)	18,175 (11.8)	42,430 (21.5)	3,336 (7.3)	2,094 (60.3)	5,792 (45.0)	35,093 (13.5)	4,880 (12.1)	5,589 (17.4)	10,493 (21.8)
1028 - 1028	64,155 (16.2)	18,267 (11.9)	42,539 (21.6)	3,349 (7.4)	2,094 (60.3)	5,880 (45.7)	35,115 (13.5)	4,890 (12.1)	5,589 (17.4)	10,587 (22.0)
1029 - 1029	64,672 (16.3)	18,332 (11.9)	42,990 (21.8)	3,349 (7.4)	2,094 (60.3)	5,880 (45.7)	35,453 (13.6)	5,003 (12.4)	5,589 (17.4)	10,652 (22.2)
1030 - 1030	69,795 (17.6)	21,122 (13.7)	45,025 (22.8)	3,648 (8.0)	2,633 (75.9)	6,323 (49.1)	38,041 (14.6)	5,532 (13.7)	6,021 (18.7)	11,244 (23.4)
1031 - 1031	70,041 (17.7)	21,212 (13.8)	45,174 (22.9)	3,655 (8.0)	2,633 (75.9)	6,323 (49.1)	38,138 (14.7)	5,532 (13.7)	6,120 (19.0)	11,294 (23.5)
1032 - 1032	70,069 (17.7)	21,215 (13.8)	45,178 (22.9)	3,676 (8.1)	2,633 (75.9)	6,323 (49.1)	38,145 (14.7)	5,547 (13.8)	6,120 (19.0)	11,301 (23.5)
1033 - 1033	70,267 (17.7)	21,309 (13.8)	45,276 (23.0)	3,682 (8.1)	2,633 (75.9)	6,323 (49.1)	38,332 (14.8)	5,552 (13.8)	6,120 (19.0)	11,307 (23.5)
1034 - 1034	70,451 (17.8)	21,393 (13.9)	45,372 (23.0)	3,685 (8.1)	2,633 (75.9)	6,325 (49.1)	38,514 (14.8)	5,552 (13.8)	6,120 (19.0)	11,307 (23.5)
1035 - 1035	70,756 (17.8)	21,535 (14.0)	45,527 (23.1)	3,695 (8.1)	2,633 (75.9)	6,325 (49.1)	38,526 (14.8)	5,566 (13.8)	6,189 (19.2)	11,517 (24.0)
1036 - 1036	71,011 (17.9)	21,724 (14.1)	45,585 (23.1)	3,702 (8.1)	2,633 (75.9)	6,328 (49.1)	38,677 (14.9)	5,609 (13.9)	6,192 (19.3)	11,572 (24.1)
1037 - 1037	71,280 (18.0)	21,885 (14.2)	45,693 (23.2)	3,702 (8.1)	2,633 (75.9)	6,416 (49.8)	38,793 (14.9)	5,674 (14.1)	6,192 (19.3)	11,572 (24.1)
1038 - 1038	71,993 (18.1)	22,184 (14.4)	45,984 (23.3)	3,825 (8.4)	2,633 (75.9)	6,419 (49.9)	39,275 (15.1)	5,791 (14.4)	6,300 (19.6)	11,574 (24.1)
1039 - 1039	72,060 (18.2)	22,184 (14.4)	45,984 (23.3)	3,892 (8.6)	2,633 (75.9)	6,419 (49.9)	39,339 (15.1)	5,791 (14.4)	6,304 (19.6)	11,574 (24.1)
1040 - 1040	76,130 (19.2)	23,429 (15.2)	48,497 (24.6)	4,204 (9.2)	2,724 (78.5)	6,508 (50.5)	41,168 (15.8)	6,484 (16.1)	7,055 (21.9)	12,191 (25.4)
1041 - 1041	76,522 (19.3)	23,698 (15.4)	48,511 (24.6)	4,312 (9.5)	2,724 (78.5)	6,562 (51.0)	41,177 (15.8)	6,539 (16.2)	7,231 (22.5)	12,289 (25.6)
1042 - 1042	76,537 (19.3)	23,698 (15.4)	48,513 (24.6)	4,326 (9.5)	2,724 (78.5)	6,562 (51.0)	41,182 (15.8)	6,549 (16.2)	7,231 (22.5)	12,289 (25.6)
1043 - 1043	76,779 (19.4)	23,934 (15.5)	48,519 (24.6)	4,326 (9.5)	2,724 (78.5)	6,653 (51.7)	41,329 (15.9)	6,553 (16.3)	7,231 (22.5)	12,289 (25.6)
1044 - 1044	76,965 (19.4)	23,934 (15.5)	48,702 (24.7)	4,330 (9.5)	2,724 (78.5)	6,653 (51.7)	41,424 (15.9)	6,553 (16.3)	7,322 (22.8)	12,289 (25.6)
1045 - 1045	77,291 (19.5)	24,088 (15.6)	48,854 (24.8)	4,350 (9.6)	2,724 (78.5)	6,653 (51.7)	41,741 (16.1)	6,559 (16.3)	7,326 (22.8)	12,289 (25.6)
1046 - 1046	77,373 (19.5)	24,141 (15.7)	48,872 (24.8)	4,360 (9.6)	2,724 (78.5)	6,653 (51.7)	41,821 (16.1)	6,559 (16.3)	7,327 (22.8)	12,289 (25.6)
1047 - 1047	77,389 (19.5)	24,150 (15.7)	48,872 (24.8)	4,367 (9.6)	2,724 (78.5)	6,653 (51.7)	41,838 (16.1)	6,559 (16.3)	7,327 (22.8)	12,289 (25.6)

総括表(1) (産業・就業形態別の賃金額階級別、規模別、地域別、年齢別表)

06年 総括表(1) (全ての労働者)

時間当り所定内賃金額 (3手当を除く)	合計	規模別(人)			年齢別(歳)					
		1~9	10~29	30以上	17以下	18~19	20~54	55~59	60~64	65以上
1048 - 1048	77,456 (19.5)	24,209 (15.7)	48,872 (24.8)	4,375 (9.6)	2,724 (78.5)	6,653 (51.7)	41,846 (16.1)	6,559 (16.3)	7,386 (23.0)	12,289 (25.6)
1049 - 1049	77,705 (19.6)	24,253 (15.7)	49,074 (24.9)	4,378 (9.6)	2,724 (78.5)	6,653 (51.7)	41,949 (16.1)	6,559 (16.3)	7,386 (23.0)	12,435 (25.9)
1050 - 1050	92,730 (23.4)	31,438 (20.4)	56,230 (28.5)	5,062 (11.1)	2,946 (84.9)	8,573 (66.6)	51,167 (19.7)	7,597 (18.8)	8,149 (25.3)	14,298 (29.8)
1051 - 1051	92,836 (23.4)	31,485 (20.4)	56,285 (28.6)	5,066 (11.1)	2,946 (84.9)	8,573 (66.6)	51,172 (19.7)	7,654 (19.0)	8,150 (25.4)	14,341 (29.9)
1052 - 1052	92,843 (23.4)	31,485 (20.4)	56,285 (28.6)	5,072 (11.1)	2,946 (84.9)	8,573 (66.6)	51,176 (19.7)	7,657 (19.0)	8,150 (25.4)	14,341 (29.9)
1053 - 1053	92,902 (23.4)	31,527 (20.5)	56,287 (28.6)	5,088 (11.2)	2,946 (84.9)	8,573 (66.6)	51,178 (19.7)	7,667 (19.0)	8,155 (25.4)	14,383 (29.9)
1054 - 1054	92,917 (23.4)	31,527 (20.5)	56,291 (28.6)	5,098 (11.2)	2,946 (84.9)	8,573 (66.6)	51,193 (19.7)	7,667 (19.0)	8,155 (25.4)	14,383 (29.9)
1055 - 1055	93,123 (23.5)	31,705 (20.6)	56,297 (28.6)	5,121 (11.3)	2,946 (84.9)	8,573 (66.6)	51,324 (19.8)	7,670 (19.0)	8,162 (25.4)	14,448 (30.1)
1056 - 1056	93,564 (23.6)	31,920 (20.7)	56,517 (28.7)	5,127 (11.3)	2,946 (84.9)	8,573 (66.6)	51,560 (19.8)	7,677 (19.0)	8,247 (25.6)	14,561 (30.3)
1057 - 1057	93,847 (23.7)	32,140 (20.9)	56,577 (28.7)	5,130 (11.3)	2,946 (84.9)	8,573 (66.6)	51,710 (19.9)	7,681 (19.0)	8,247 (25.6)	14,691 (30.6)
1058 - 1058	94,064 (23.7)	32,257 (20.9)	56,583 (28.7)	5,224 (11.5)	2,946 (84.9)	8,573 (66.6)	51,785 (19.9)	7,752 (19.2)	8,258 (25.7)	14,749 (30.7)
1059 - 1059	94,451 (23.8)	32,494 (21.1)	56,697 (28.8)	5,260 (11.6)	2,946 (84.9)	8,576 (66.6)	51,927 (20.0)	7,822 (19.4)	8,356 (26.0)	14,825 (30.9)
1060 - 1060	98,563 (24.8)	33,701 (21.9)	59,435 (30.2)	5,427 (11.9)	3,037 (87.6)	9,124 (70.9)	54,369 (20.9)	7,942 (19.7)	8,795 (27.4)	15,295 (31.8)
1061 - 1061	98,778 (24.9)	33,745 (21.9)	59,599 (30.2)	5,433 (11.9)	3,037 (87.6)	9,124 (70.9)	54,478 (21.0)	7,994 (19.8)	8,850 (27.5)	15,295 (31.8)
1062 - 1062	98,923 (24.9)	33,876 (22.0)	59,607 (30.2)	5,440 (12.0)	3,037 (87.6)	9,124 (70.9)	54,621 (21.0)	7,996 (19.8)	8,850 (27.5)	15,295 (31.8)
1063 - 1063	99,016 (25.0)	33,970 (22.0)	59,607 (30.2)	5,440 (12.0)	3,037 (87.6)	9,124 (70.9)	54,621 (21.0)	8,089 (20.1)	8,850 (27.5)	15,295 (31.8)
1064 - 1064	100,729 (25.4)	34,832 (22.6)	60,388 (30.6)	5,509 (12.1)	3,037 (87.6)	9,124 (70.9)	55,860 (21.5)	8,312 (20.6)	9,010 (28.0)	15,386 (32.0)
1065 - 1065	101,208 (25.5)	35,027 (22.7)	60,448 (30.7)	5,733 (12.6)	3,037 (87.6)	9,124 (70.9)	56,199 (21.6)	8,312 (20.6)	9,024 (28.1)	15,512 (32.3)
1066 - 1066	101,764 (25.7)	35,251 (22.9)	60,722 (30.8)	5,790 (12.7)	3,037 (87.6)	9,189 (71.4)	56,298 (21.7)	8,470 (21.0)	9,113 (28.3)	15,657 (32.6)
1067 - 1067	101,867 (25.7)	35,255 (22.9)	60,788 (30.8)	5,825 (12.8)	3,037 (87.6)	9,189 (71.4)	56,397 (21.7)	8,474 (21.0)	9,113 (28.3)	15,657 (32.6)
1068 - 1068	102,098 (25.7)	35,297 (22.9)	60,947 (30.9)	5,853 (12.9)	3,037 (87.6)	9,189 (71.4)	56,458 (21.7)	8,516 (21.1)	9,116 (28.4)	15,781 (32.9)
1069 - 1069	102,304 (25.8)	35,504 (23.0)	60,947 (30.9)	5,853 (12.9)	3,037 (87.6)	9,189 (71.4)	56,602 (21.8)	8,580 (21.3)	9,116 (28.4)	15,781 (32.9)
1070 - 1070	106,194 (26.8)	36,906 (23.9)	63,174 (32.1)	6,114 (13.4)	3,239 (93.4)	9,468 (73.5)	59,066 (22.7)	8,990 (22.3)	9,391 (29.2)	16,040 (33.4)
1071 - 1071	107,140 (27.0)	37,286 (24.2)	63,722 (32.3)	6,132 (13.5)	3,239 (93.4)	9,468 (73.5)	59,823 (23.0)	9,055 (22.5)	9,391 (29.2)	16,164 (33.7)
1072 - 1072	107,513 (27.1)	37,468 (24.3)	63,907 (32.4)	6,139 (13.5)	3,239 (93.4)	9,468 (73.5)	60,020 (23.1)	9,055 (22.5)	9,479 (29.5)	16,252 (33.8)
1073 - 1073	107,532 (27.1)	37,472 (24.3)	63,916 (32.4)	6,143 (13.5)	3,239 (93.4)	9,468 (73.5)	60,038 (23.1)	9,055 (22.5)	9,479 (29.5)	16,252 (33.8)

総括表（１）（産業・就業形態別の賃金額階級別、規模別、地域別、年齢別表）

06年 総括表（１）（全ての労働者）

時間当り所定内賃金額 (3手当を除く)	合計	規模別(人)			年齢別(歳)					
		1～9	10～29	30以上	17以下	18～19	20～54	55～59	60～64	65以上
1074 - 1074	107,805 (27.2)	37,537 (24.4)	64,114 (32.5)	6,153 (13.5)	3,239 (93.4)	9,468 (73.5)	60,300 (23.2)	9,065 (22.5)	9,481 (29.5)	16,252 (33.8)
1075 - 1075	108,230 (27.3)	37,646 (24.4)	64,312 (32.6)	6,272 (13.8)	3,239 (93.4)	9,470 (73.5)	60,473 (23.3)	9,209 (22.8)	9,532 (29.6)	16,308 (34.0)
1076 - 1076	108,827 (27.4)	37,688 (24.5)	64,544 (32.8)	6,595 (14.5)	3,239 (93.4)	9,470 (73.5)	60,929 (23.4)	9,349 (23.2)	9,532 (29.6)	16,308 (34.0)
1077 - 1077	109,013 (27.5)	37,778 (24.5)	64,637 (32.8)	6,598 (14.5)	3,239 (93.4)	9,470 (73.5)	61,072 (23.5)	9,349 (23.2)	9,574 (29.8)	16,308 (34.0)
1078 - 1078	109,473 (27.6)	37,930 (24.6)	64,843 (32.9)	6,700 (14.7)	3,239 (93.4)	9,472 (73.6)	61,458 (23.7)	9,359 (23.2)	9,586 (29.8)	16,359 (34.1)
1079 - 1079	109,950 (27.7)	38,192 (24.8)	65,058 (33.0)	6,700 (14.7)	3,239 (93.4)	9,472 (73.6)	61,888 (23.8)	9,359 (23.2)	9,633 (30.0)	16,359 (34.1)
1080 - 1080	112,892 (28.5)	38,842 (25.2)	66,466 (33.7)	7,585 (16.7)	3,352 (96.6)	9,814 (76.2)	63,527 (24.4)	9,526 (23.6)	10,098 (31.4)	16,576 (34.5)
1081 - 1081	113,041 (28.5)	38,975 (25.3)	66,478 (33.7)	7,588 (16.7)	3,352 (96.6)	9,819 (76.3)	63,574 (24.5)	9,529 (23.6)	10,192 (31.7)	16,576 (34.5)
1082 - 1082	113,341 (28.6)	39,106 (25.4)	66,626 (33.8)	7,609 (16.7)	3,352 (96.6)	9,819 (76.3)	63,785 (24.5)	9,618 (23.8)	10,192 (31.7)	16,576 (34.5)
1083 - 1083	113,604 (28.6)	39,310 (25.5)	66,634 (33.8)	7,660 (16.8)	3,352 (96.6)	9,819 (76.3)	63,828 (24.6)	9,685 (24.0)	10,345 (32.2)	16,576 (34.5)
1084 - 1084	113,772 (28.7)	39,353 (25.5)	66,742 (33.9)	7,677 (16.9)	3,352 (96.6)	9,819 (76.3)	63,943 (24.6)	9,685 (24.0)	10,345 (32.2)	16,628 (34.6)
1085 - 1085	115,211 (29.0)	40,394 (26.2)	67,059 (34.0)	7,758 (17.1)	3,352 (96.6)	9,819 (76.3)	64,654 (24.9)	9,706 (24.1)	10,524 (32.7)	17,156 (35.7)
1086 - 1086	117,146 (29.5)	41,955 (27.2)	67,423 (34.2)	7,769 (17.1)	3,352 (96.6)	9,819 (76.3)	65,483 (25.2)	10,020 (24.8)	10,969 (34.1)	17,503 (36.4)
1087 - 1087	117,418 (29.6)	41,958 (27.2)	67,584 (34.3)	7,876 (17.3)	3,352 (96.6)	9,819 (76.3)	65,703 (25.3)	10,020 (24.8)	11,022 (34.3)	17,503 (36.4)
1088 - 1088	117,596 (29.6)	42,049 (27.3)	67,593 (34.3)	7,954 (17.5)	3,352 (96.6)	9,819 (76.3)	65,814 (25.3)	10,022 (24.9)	11,086 (34.5)	17,503 (36.4)
1089 - 1089	117,749 (29.7)	42,091 (27.3)	67,698 (34.4)	7,960 (17.5)	3,352 (96.6)	9,819 (76.3)	65,873 (25.4)	10,074 (25.0)	11,128 (34.6)	17,503 (36.4)
1090 - 1090	119,698 (30.2)	42,674 (27.7)	68,804 (34.9)	8,220 (18.1)	3,352 (96.6)	9,932 (77.1)	67,188 (25.9)	10,162 (25.2)	11,384 (35.4)	17,681 (36.8)
1091 - 1091	120,171 (30.3)	42,722 (27.7)	69,162 (35.1)	8,287 (18.2)	3,352 (96.6)	9,932 (77.1)	67,541 (26.0)	10,166 (25.2)	11,447 (35.6)	17,734 (36.9)
1092 - 1092	120,474 (30.4)	42,812 (27.8)	69,310 (35.2)	8,352 (18.4)	3,352 (96.6)	9,932 (77.1)	67,737 (26.1)	10,218 (25.3)	11,499 (35.8)	17,736 (36.9)
1093 - 1093	121,040 (30.5)	43,055 (27.9)	69,634 (35.3)	8,352 (18.4)	3,352 (96.6)	9,932 (77.1)	68,130 (26.2)	10,272 (25.5)	11,554 (35.9)	17,801 (37.1)
1094 - 1094	121,112 (30.5)	43,059 (27.9)	69,695 (35.4)	8,358 (18.4)	3,352 (96.6)	9,932 (77.1)	68,146 (26.2)	10,272 (25.5)	11,554 (35.9)	17,857 (37.2)
1095 - 1095	121,558 (30.6)	43,217 (28.0)	69,866 (35.5)	8,476 (18.6)	3,352 (96.6)	9,932 (77.1)	68,299 (26.3)	10,392 (25.8)	11,638 (36.2)	17,945 (37.4)
1096 - 1096	121,701 (30.7)	43,282 (28.1)	69,920 (35.5)	8,498 (18.7)	3,352 (96.6)	9,932 (77.1)	68,442 (26.3)	10,392 (25.8)	11,638 (36.2)	17,945 (37.4)
1097 - 1097	121,822 (30.7)	43,349 (28.1)	69,975 (35.5)	8,498 (18.7)	3,352 (96.6)	9,932 (77.1)	68,496 (26.4)	10,459 (25.9)	11,638 (36.2)	17,945 (37.4)
1098 - 1098	122,073 (30.8)	43,483 (28.2)	70,088 (35.6)	8,502 (18.7)	3,352 (96.6)	9,932 (77.1)	68,614 (26.4)	10,521 (26.1)	11,708 (36.4)	17,947 (37.4)
1099 - 1099	122,123 (30.8)	43,528 (28.2)	70,089 (35.6)	8,506 (18.7)	3,352 (96.6)	9,932 (77.1)	68,621 (26.4)	10,563 (26.2)	11,708 (36.4)	17,947 (37.4)

総括表(1)(産業・就業形態別の賃金額階級別、規模別、地域別、年齢別表)

06年 総括表(1)(全ての労働者)

時間当り所定内賃金額 (3手当を除く)	合計	規模別(人)			年齢別(歳)					
		1~9	10~29	30以上	17以下	18~19	20~54	55~59	60~64	65以上
1100 - 1100	138,237 (34.8)	51,923 (33.7)	77,021 (39.1)	9,293 (20.4)	3,352 (96.6)	10,982 (85.3)	79,445 (30.6)	11,549 (28.6)	12,895 (40.1)	20,013 (41.7)
1101 - 1101	138,677 (35.0)	52,070 (33.8)	77,290 (39.2)	9,317 (20.5)	3,352 (96.6)	10,982 (85.3)	79,758 (30.7)	11,599 (28.8)	12,974 (40.4)	20,013 (41.7)
1102 - 1102	138,855 (35.0)	52,171 (33.8)	77,357 (39.3)	9,327 (20.5)	3,352 (96.6)	10,982 (85.3)	79,827 (30.7)	11,606 (28.8)	12,975 (40.4)	20,113 (41.9)
1103 - 1103	139,100 (35.1)	52,361 (34.0)	77,391 (39.3)	9,348 (20.5)	3,352 (96.6)	10,988 (85.3)	79,996 (30.8)	11,616 (28.8)	12,977 (40.4)	20,172 (42.0)
1104 - 1104	139,228 (35.1)	52,361 (34.0)	77,505 (39.3)	9,361 (20.6)	3,352 (96.6)	10,988 (85.3)	80,061 (30.8)	11,616 (28.8)	12,987 (40.4)	20,224 (42.1)
1105 - 1105	139,437 (35.2)	52,540 (34.1)	77,508 (39.3)	9,389 (20.6)	3,352 (96.6)	10,988 (85.3)	80,143 (30.8)	11,733 (29.1)	12,997 (40.4)	20,224 (42.1)
1106 - 1106	139,638 (35.2)	52,629 (34.1)	77,617 (39.4)	9,392 (20.6)	3,352 (96.6)	10,988 (85.3)	80,289 (30.9)	11,733 (29.1)	13,000 (40.4)	20,277 (42.2)
1107 - 1107	140,073 (35.3)	52,893 (34.3)	77,775 (39.5)	9,406 (20.7)	3,352 (96.6)	10,991 (85.4)	80,600 (31.0)	11,733 (29.1)	13,120 (40.8)	20,277 (42.2)
1108 - 1108	140,374 (35.4)	53,084 (34.4)	77,878 (39.5)	9,413 (20.7)	3,352 (96.6)	10,991 (85.4)	80,767 (31.1)	11,733 (29.1)	13,120 (40.8)	20,411 (42.5)
1109 - 1109	140,385 (35.4)	53,084 (34.4)	77,878 (39.5)	9,423 (20.7)	3,352 (96.6)	10,991 (85.4)	80,778 (31.1)	11,733 (29.1)	13,120 (40.8)	20,411 (42.5)
1110 - 1119	145,423 (36.7)	54,660 (35.5)	80,438 (40.8)	10,325 (22.7)	3,352 (96.6)	10,995 (85.4)	83,410 (32.1)	12,295 (30.5)	13,705 (42.6)	21,666 (45.1)
1120 - 1129	149,396 (37.7)	55,892 (36.3)	82,536 (41.9)	10,968 (24.1)	3,352 (96.6)	11,167 (86.7)	85,721 (33.0)	12,631 (31.3)	14,205 (44.2)	22,319 (46.5)
1130 - 1139	152,631 (38.5)	56,845 (36.9)	84,386 (42.8)	11,401 (25.1)	3,352 (96.6)	11,173 (86.8)	87,970 (33.9)	13,128 (32.6)	14,501 (45.1)	22,507 (46.9)
1140 - 1149	156,056 (39.3)	57,839 (37.5)	86,323 (43.8)	11,894 (26.1)	3,352 (96.6)	11,293 (87.7)	90,276 (34.7)	13,695 (34.0)	14,686 (45.7)	22,756 (47.4)
1150 - 1159	163,628 (41.2)	60,557 (39.3)	90,647 (46.0)	12,424 (27.3)	3,352 (96.6)	11,420 (88.7)	95,432 (36.7)	14,477 (35.9)	15,268 (47.5)	23,680 (49.3)
1160 - 1169	167,053 (42.1)	61,979 (40.2)	92,327 (46.9)	12,746 (28.0)	3,352 (96.6)	11,424 (88.7)	97,866 (37.7)	14,885 (36.9)	15,662 (48.7)	23,864 (49.7)
1170 - 1179	168,748 (42.5)	62,690 (40.7)	93,073 (47.2)	12,985 (28.5)	3,352 (96.6)	11,555 (89.7)	98,976 (38.1)	15,083 (37.4)	15,785 (49.1)	23,997 (50.0)
1180 - 1189	171,031 (43.1)	63,543 (41.2)	94,274 (47.8)	13,214 (29.0)	3,352 (96.6)	11,555 (89.7)	100,339 (38.6)	15,410 (38.2)	15,995 (49.7)	24,380 (50.8)
1190 - 1199	173,420 (43.7)	64,876 (42.1)	95,029 (48.2)	13,515 (29.7)	3,352 (96.6)	11,563 (89.8)	101,741 (39.2)	15,728 (39.0)	16,226 (50.5)	24,812 (51.7)
1200 - 1299	214,544 (54.1)	80,486 (52.2)	117,018 (59.4)	17,040 (37.5)	3,468 (100.0)	12,758 (99.1)	129,313 (49.8)	18,964 (47.0)	19,341 (60.2)	30,701 (63.9)
1300 - 1399	241,787 (61.0)	91,625 (59.4)	129,747 (65.8)	20,415 (44.9)	3,469 (100.0)	12,763 (99.1)	149,739 (57.6)	20,807 (51.6)	21,387 (66.5)	33,620 (70.0)
1400 - 1499	264,829 (66.8)	99,706 (64.7)	141,275 (71.7)	23,848 (52.4)		12,763 (99.1)	167,358 (64.4)	22,870 (56.7)	22,957 (71.4)	35,413 (73.7)
1500 - 1599	287,654 (72.5)	108,628 (70.5)	151,962 (77.1)	27,064 (59.5)		12,876 (100.0)	182,493 (70.2)	24,968 (61.9)	24,686 (76.8)	39,162 (81.5)
1600 - 1699	305,506 (77.0)	114,964 (74.6)	160,653 (81.5)	29,890 (65.7)			195,376 (75.2)	27,216 (67.5)	26,009 (80.9)	40,559 (84.5)
1700 - 1799	320,229 (80.7)	120,370 (78.1)	167,613 (85.1)	32,246 (70.9)			207,334 (79.8)	28,660 (71.1)	26,636 (82.8)	41,253 (85.9)
1800 - 1899	331,225 (83.5)	124,886 (81.0)	172,394 (87.5)	33,944 (74.6)			215,248 (82.8)	29,797 (73.9)	27,577 (85.8)	42,258 (88.0)

総括表（１）（産業・就業形態別の賃金額階級別、規模別、地域別、年齢別表）

06年 総括表（１）（ 全ての労働者）

時間当り所定内賃金額 （３手当を除く）	合計	規模別（人）			年齢別（歳）					
		1～9	10～29	30以上	17以下	18～19	20～54	55～59	60～64	65以上
1900 - 1999	341,952 (86.2)	130,156 (84.4)	176,244 (89.4)	35,552 (78.1)			223,396 (86.0)	31,173 (77.3)	27,961 (87.0)	43,076 (89.7)
2000 -	396,681 (100.0)	154,129 (100.0)	197,053 (100.0)	45,499 (100.0)			259,835 (100.0)	40,326 (100.0)	32,151 (100.0)	48,024 (100.0)
月平均賃金額	190,197	193,788	171,568	258,715	41,998	53,601	201,929	229,836	177,690	149,138
時間当平均賃金額	1,465	1,513	1,384	1,653	1,028	1,060	1,478	1,619	1,467	1,403
月一人当たり 労働時間数	123	124	116	153	41	51	130	135	120	105
第1・20分位数	1,008	1,008	1,008	1,010	1,008	1,008	1,008	1,010	1,008	1,008
第1・10分位数	1,010	1,010	1,010	1,050	1,008	1,008	1,010	1,020	1,010	1,009
第1・4分位数	1,064	1,080	1,050	1,136	1,008	1,010	1,086	1,090	1,050	1,040
中位数	1,250	1,266	1,200	1,468	1,010	1,040	1,300	1,350	1,190	1,180
四分位偏差係数	0.2356	0.2464	0.2075	0.2633	0.0109	0.0337	0.2335	0.3048	0.2143	0.1949

総括表(1) (産業・就業形態別の賃金額階級別、規模別、地域別、年齢別表)

06年 総括表(1) (一般労働者)

時間当り所定内賃金額 (3手当を除く)	合計	規模別(人)			年齢別(歳)					
		1~9	10~29	30以上	17以下	18~19	20~54	55~59	60~64	65以上
計	223,629	93,049	96,578	34,002	1	992	161,882	25,642	15,775	19,336
円	2,683	1,345	1,152	186		70	1,726	137	355	395
- 997	(1.2)	(1.4)	(1.2)	(0.5)		(7.1)	(1.1)	(0.5)	(2.2)	(2.0)
998 - 998	2,687	1,345	1,152	190		70	1,730	137	355	395
	(1.2)	(1.4)	(1.2)	(0.6)		(7.1)	(1.1)	(0.5)	(2.2)	(2.0)
999 - 999	2,687	1,345	1,152	190		70	1,730	137	355	395
	(1.2)	(1.4)	(1.2)	(0.6)		(7.1)	(1.1)	(0.5)	(2.2)	(2.0)
1000 - 1000	3,609	2,105	1,312	192		70	2,288	293	420	538
	(1.6)	(2.3)	(1.4)	(0.6)		(7.1)	(1.4)	(1.1)	(2.7)	(2.8)
1001 - 1001	3,609	2,105	1,312	192		70	2,288	293	420	538
	(1.6)	(2.3)	(1.4)	(0.6)		(7.1)	(1.4)	(1.1)	(2.7)	(2.8)
1002 - 1002	3,617	2,105	1,320	192		70	2,296	293	420	538
	(1.6)	(2.3)	(1.4)	(0.6)		(7.1)	(1.4)	(1.1)	(2.7)	(2.8)
1003 - 1003	3,621	2,105	1,320	196		74	2,296	293	420	538
	(1.6)	(2.3)	(1.4)	(0.6)		(7.4)	(1.4)	(1.1)	(2.7)	(2.8)
1004 - 1004	3,623	2,105	1,322	196		74	2,296	295	420	538
	(1.6)	(2.3)	(1.4)	(0.6)		(7.4)	(1.4)	(1.2)	(2.7)	(2.8)
1005 - 1005	3,692	2,170	1,323	199		74	2,301	360	420	538
	(1.7)	(2.3)	(1.4)	(0.6)		(7.4)	(1.4)	(1.4)	(2.7)	(2.8)
1006 - 1006	3,792	2,174	1,419	199		74	2,399	360	421	538
	(1.7)	(2.3)	(1.5)	(0.6)		(7.4)	(1.5)	(1.4)	(2.7)	(2.8)
1007 - 1007	3,792	2,174	1,419	199		74	2,399	360	421	538
	(1.7)	(2.3)	(1.5)	(0.6)		(7.4)	(1.5)	(1.4)	(2.7)	(2.8)
1008 - 1008	4,882	2,900	1,659	323		179	2,980	526	429	768
	(2.2)	(3.1)	(1.7)	(1.0)		(18.1)	(1.8)	(2.1)	(2.7)	(4.0)
1009 - 1009	4,903	2,900	1,669	334		179	2,992	526	434	772
	(2.2)	(3.1)	(1.7)	(1.0)		(18.1)	(1.8)	(2.1)	(2.8)	(4.0)
1010 - 1010	8,569	5,351	2,877	341		381	5,696	722	822	948
	(3.8)	(5.8)	(3.0)	(1.0)		(38.4)	(3.5)	(2.8)	(5.2)	(4.9)
1011 - 1011	8,584	5,351	2,881	352		387	5,701	726	822	948
	(3.8)	(5.8)	(3.0)	(1.0)		(39.0)	(3.5)	(2.8)	(5.2)	(4.9)
1012 - 1012	8,734	5,353	2,975	406		387	5,846	726	827	948
	(3.9)	(5.8)	(3.1)	(1.2)		(39.0)	(3.6)	(2.8)	(5.2)	(4.9)
1013 - 1013	8,912	5,424	3,071	416		387	5,942	726	837	1,021
	(4.0)	(5.8)	(3.2)	(1.2)		(39.0)	(3.7)	(2.8)	(5.3)	(5.3)
1014 - 1014	8,924	5,424	3,076	423		387	5,942	737	837	1,021
	(4.0)	(5.8)	(3.2)	(1.2)		(39.0)	(3.7)	(2.9)	(5.3)	(5.3)
1015 - 1015	9,077	5,428	3,222	427		387	6,000	828	837	1,025
	(4.1)	(5.8)	(3.3)	(1.3)		(39.0)	(3.7)	(3.2)	(5.3)	(5.3)
1016 - 1016	9,153	5,428	3,276	449		387	6,072	828	837	1,028
	(4.1)	(5.8)	(3.4)	(1.3)		(39.0)	(3.8)	(3.2)	(5.3)	(5.3)
1017 - 1017	9,264	5,428	3,276	560		387	6,130	882	837	1,028
	(4.1)	(5.8)	(3.4)	(1.6)		(39.0)	(3.8)	(3.4)	(5.3)	(5.3)
1018 - 1018	9,595	5,759	3,276	560		387	6,218	1,059	837	1,093
	(4.3)	(6.2)	(3.4)	(1.6)		(39.0)	(3.8)	(4.1)	(5.3)	(5.7)
1019 - 1019	9,704	5,759	3,385	560		387	6,327	1,059	837	1,093
	(4.3)	(6.2)	(3.5)	(1.6)		(39.0)	(3.9)	(4.1)	(5.3)	(5.7)
1020 - 1020	10,073	5,947	3,487	639		387	6,510	1,124	849	1,202
	(4.5)	(6.4)	(3.6)	(1.9)		(39.0)	(4.0)	(4.4)	(5.4)	(6.2)
1021 - 1021	10,089	5,947	3,500	641		387	6,522	1,129	849	1,202
	(4.5)	(6.4)	(3.6)	(1.9)		(39.0)	(4.0)	(4.4)	(5.4)	(6.2)

総括表(1)(産業・就業形態別の賃金額階級別、規模別、地域別、年齢別表)

06年 総括表(1)(一般労働者)

時間当り所定内賃金額 (3手当を除く)	合計	規模別(人)			年齢別(歳)					
		1~9	10~29	30以上	17以下	18~19	20~54	55~59	60~64	65以上
1022 - 1022	10,472 (4.7)	5,947 (6.4)	3,880 (4.0)	644 (1.9)		387 (39.0)	6,793 (4.2)	1,129 (4.4)	852 (5.4)	1,311 (6.8)
1023 - 1023	10,472 (4.7)	5,947 (6.4)	3,880 (4.0)	644 (1.9)		387 (39.0)	6,793 (4.2)	1,129 (4.4)	852 (5.4)	1,311 (6.8)
1024 - 1024	10,477 (4.7)	5,947 (6.4)	3,883 (4.0)	647 (1.9)		387 (39.0)	6,796 (4.2)	1,129 (4.4)	855 (5.4)	1,311 (6.8)
1025 - 1025	10,658 (4.8)	5,953 (6.4)	3,896 (4.0)	809 (2.4)		395 (39.8)	6,947 (4.3)	1,136 (4.4)	870 (5.5)	1,311 (6.8)
1026 - 1026	10,737 (4.8)	6,026 (6.5)	3,896 (4.0)	816 (2.4)		395 (39.8)	6,955 (4.3)	1,203 (4.7)	870 (5.5)	1,314 (6.8)
1027 - 1027	10,793 (4.8)	6,026 (6.5)	3,948 (4.1)	819 (2.4)		395 (39.8)	7,011 (4.3)	1,203 (4.7)	870 (5.5)	1,314 (6.8)
1028 - 1028	10,901 (4.9)	6,026 (6.5)	4,053 (4.2)	823 (2.4)		395 (39.8)	7,028 (4.3)	1,203 (4.7)	870 (5.5)	1,405 (7.3)
1029 - 1029	10,966 (4.9)	6,090 (6.5)	4,053 (4.2)	823 (2.4)		395 (39.8)	7,028 (4.3)	1,203 (4.7)	870 (5.5)	1,470 (7.6)
1030 - 1030	11,714 (5.2)	6,687 (7.2)	4,150 (4.3)	877 (2.6)		572 (57.6)	7,331 (4.5)	1,295 (5.0)	871 (5.5)	1,646 (8.5)
1031 - 1031	11,864 (5.3)	6,776 (7.3)	4,204 (4.4)	884 (2.6)		572 (57.6)	7,423 (4.6)	1,295 (5.0)	878 (5.6)	1,695 (8.8)
1032 - 1032	11,879 (5.3)	6,779 (7.3)	4,208 (4.4)	891 (2.6)		572 (57.6)	7,430 (4.6)	1,299 (5.1)	878 (5.6)	1,699 (8.8)
1033 - 1033	11,886 (5.3)	6,779 (7.3)	4,212 (4.4)	894 (2.6)		572 (57.6)	7,433 (4.6)	1,299 (5.1)	878 (5.6)	1,703 (8.8)
1034 - 1034	12,069 (5.4)	6,864 (7.4)	4,308 (4.5)	897 (2.6)		574 (57.8)	7,615 (4.7)	1,299 (5.1)	878 (5.6)	1,703 (8.8)
1035 - 1035	12,205 (5.5)	6,936 (7.5)	4,371 (4.5)	897 (2.6)		574 (57.8)	7,627 (4.7)	1,303 (5.1)	878 (5.6)	1,822 (9.4)
1036 - 1036	12,398 (5.5)	7,122 (7.7)	4,375 (4.5)	901 (2.6)		577 (58.1)	7,775 (4.8)	1,346 (5.2)	878 (5.6)	1,822 (9.4)
1037 - 1037	12,513 (5.6)	7,130 (7.7)	4,483 (4.6)	901 (2.6)		577 (58.1)	7,890 (4.9)	1,346 (5.2)	878 (5.6)	1,822 (9.4)
1038 - 1038	12,728 (5.7)	7,275 (7.8)	4,547 (4.7)	906 (2.7)		580 (58.4)	8,047 (5.0)	1,398 (5.5)	878 (5.6)	1,825 (9.4)
1039 - 1039	12,795 (5.7)	7,275 (7.8)	4,547 (4.7)	974 (2.9)		580 (58.4)	8,110 (5.0)	1,398 (5.5)	882 (5.6)	1,825 (9.4)
1040 - 1040	13,197 (5.9)	7,455 (8.0)	4,712 (4.9)	1,031 (3.0)		580 (58.4)	8,348 (5.2)	1,562 (6.1)	882 (5.6)	1,825 (9.4)
1041 - 1041	13,534 (6.1)	7,722 (8.3)	4,726 (4.9)	1,085 (3.2)		634 (63.8)	8,357 (5.2)	1,564 (6.1)	1,058 (6.7)	1,921 (9.9)
1042 - 1042	13,539 (6.1)	7,722 (8.3)	4,728 (4.9)	1,088 (3.2)		634 (63.8)	8,363 (5.2)	1,564 (6.1)	1,058 (6.7)	1,921 (9.9)
1043 - 1043	13,688 (6.1)	7,870 (8.5)	4,730 (4.9)	1,088 (3.2)		636 (64.1)	8,510 (5.3)	1,564 (6.1)	1,058 (6.7)	1,921 (9.9)
1044 - 1044	13,692 (6.1)	7,870 (8.5)	4,730 (4.9)	1,092 (3.2)		636 (64.1)	8,513 (5.3)	1,564 (6.1)	1,058 (6.7)	1,921 (9.9)
1045 - 1045	13,800 (6.2)	7,870 (8.5)	4,827 (5.0)	1,102 (3.2)		636 (64.1)	8,612 (5.3)	1,569 (6.1)	1,061 (6.7)	1,921 (9.9)
1046 - 1046	13,831 (6.2)	7,878 (8.5)	4,846 (5.0)	1,106 (3.3)		636 (64.1)	8,642 (5.3)	1,569 (6.1)	1,063 (6.7)	1,921 (9.9)
1047 - 1047	13,839 (6.2)	7,883 (8.5)	4,846 (5.0)	1,110 (3.3)		636 (64.1)	8,650 (5.3)	1,569 (6.1)	1,063 (6.7)	1,921 (9.9)

総括表(1)(産業・就業形態別の賃金額階級別、規模別、地域別、年齢別表)

06年 総括表(1)(一般労働者)

時間当り所定内賃金額 (3手当を除く)	合計	規模別(人)			年齢別(歳)					
		1~9	10~29	30以上	17以下	18~19	20~54	55~59	60~64	65以上
1048 - 1048	13,898 (6.2)	7,942 (8.5)	4,846 (5.0)	1,110 (3.3)		636 (64.1)	8,650 (5.3)	1,569 (6.1)	1,121 (7.1)	1,921 (9.9)
1049 - 1049	14,056 (6.3)	7,986 (8.6)	4,956 (5.1)	1,113 (3.3)		636 (64.1)	8,753 (5.4)	1,569 (6.1)	1,121 (7.1)	1,976 (10.2)
1050 - 1050	15,922 (7.1)	8,891 (9.6)	5,881 (6.1)	1,151 (3.4)		636 (64.1)	9,850 (6.1)	1,671 (6.5)	1,335 (8.5)	2,430 (12.6)
1051 - 1051	15,986 (7.1)	8,895 (9.6)	5,937 (6.1)	1,154 (3.4)		636 (64.1)	9,856 (6.1)	1,729 (6.7)	1,336 (8.5)	2,430 (12.6)
1052 - 1052	15,989 (7.1)	8,895 (9.6)	5,937 (6.1)	1,158 (3.4)		636 (64.1)	9,859 (6.1)	1,729 (6.7)	1,336 (8.5)	2,430 (12.6)
1053 - 1053	15,994 (7.2)	8,895 (9.6)	5,938 (6.1)	1,161 (3.4)		636 (64.1)	9,862 (6.1)	1,729 (6.7)	1,338 (8.5)	2,430 (12.6)
1054 - 1054	15,998 (7.2)	8,895 (9.6)	5,942 (6.2)	1,161 (3.4)		636 (64.1)	9,866 (6.1)	1,729 (6.7)	1,338 (8.5)	2,430 (12.6)
1055 - 1055	16,015 (7.2)	8,897 (9.6)	5,948 (6.2)	1,170 (3.4)		636 (64.1)	9,873 (6.1)	1,732 (6.8)	1,345 (8.5)	2,430 (12.6)
1056 - 1056	16,191 (7.2)	8,962 (9.6)	6,055 (6.3)	1,173 (3.5)		636 (64.1)	10,045 (6.2)	1,735 (6.8)	1,345 (8.5)	2,430 (12.6)
1057 - 1057	16,343 (7.3)	9,052 (9.7)	6,115 (6.3)	1,176 (3.5)		636 (64.1)	10,194 (6.3)	1,739 (6.8)	1,345 (8.5)	2,430 (12.6)
1058 - 1058	16,355 (7.3)	9,052 (9.7)	6,120 (6.3)	1,183 (3.5)		636 (64.1)	10,205 (6.3)	1,739 (6.8)	1,345 (8.5)	2,430 (12.6)
1059 - 1059	16,615 (7.4)	9,225 (9.9)	6,181 (6.4)	1,209 (3.6)		639 (64.4)	10,337 (6.4)	1,808 (7.1)	1,390 (8.8)	2,440 (12.6)
1060 - 1060	16,981 (7.6)	9,467 (10.2)	6,298 (6.5)	1,216 (3.6)		639 (64.4)	10,480 (6.5)	1,851 (7.2)	1,395 (8.8)	2,617 (13.5)
1061 - 1061	17,190 (7.7)	9,511 (10.2)	6,462 (6.7)	1,216 (3.6)		639 (64.4)	10,582 (6.5)	1,903 (7.4)	1,449 (9.2)	2,617 (13.5)
1062 - 1062	17,204 (7.7)	9,511 (10.2)	6,470 (6.7)	1,222 (3.6)		639 (64.4)	10,594 (6.5)	1,905 (7.4)	1,449 (9.2)	2,617 (13.5)
1063 - 1063	17,297 (7.7)	9,605 (10.3)	6,470 (6.7)	1,222 (3.6)		639 (64.4)	10,594 (6.5)	1,998 (7.8)	1,449 (9.2)	2,617 (13.5)
1064 - 1064	17,541 (7.8)	9,670 (10.4)	6,638 (6.9)	1,233 (3.6)		639 (64.4)	10,718 (6.6)	2,053 (8.0)	1,514 (9.6)	2,617 (13.5)
1065 - 1065	17,620 (7.9)	9,735 (10.5)	6,645 (6.9)	1,240 (3.6)		639 (64.4)	10,794 (6.7)	2,053 (8.0)	1,517 (9.6)	2,617 (13.5)
1066 - 1066	17,991 (8.0)	9,957 (10.7)	6,736 (7.0)	1,298 (3.8)		704 (70.9)	10,799 (6.7)	2,120 (8.3)	1,606 (10.2)	2,762 (14.3)
1067 - 1067	18,064 (8.1)	9,961 (10.7)	6,802 (7.0)	1,301 (3.8)		704 (70.9)	10,868 (6.7)	2,124 (8.3)	1,606 (10.2)	2,762 (14.3)
1068 - 1068	18,166 (8.1)	10,003 (10.8)	6,856 (7.1)	1,307 (3.8)		704 (70.9)	10,874 (6.7)	2,166 (8.4)	1,606 (10.2)	2,817 (14.6)
1069 - 1069	18,373 (8.2)	10,210 (11.0)	6,856 (7.1)	1,307 (3.8)		704 (70.9)	11,017 (6.8)	2,230 (8.7)	1,606 (10.2)	2,817 (14.6)
1070 - 1070	18,734 (8.4)	10,216 (11.0)	7,151 (7.4)	1,367 (4.0)		758 (76.4)	11,314 (7.0)	2,237 (8.7)	1,608 (10.2)	2,817 (14.6)
1071 - 1071	19,487 (8.7)	10,596 (11.4)	7,516 (7.8)	1,374 (4.0)		758 (76.4)	11,878 (7.3)	2,302 (9.0)	1,608 (10.2)	2,940 (15.2)
1072 - 1072	19,681 (8.8)	10,689 (11.5)	7,610 (7.9)	1,382 (4.1)		758 (76.4)	11,983 (7.4)	2,302 (9.0)	1,697 (10.8)	2,940 (15.2)
1073 - 1073	19,697 (8.8)	10,694 (11.5)	7,618 (7.9)	1,385 (4.1)		758 (76.4)	12,000 (7.4)	2,302 (9.0)	1,697 (10.8)	2,940 (15.2)

総括表(1) (産業・就業形態別の賃金額階級別、規模別、地域別、年齢別表)

06年 総括表(1) (一般労働者)

時間当り所定内賃金額 (3手当を除く)	合計	規模別(人)			年齢別(歳)					
		1~9	10~29	30以上	17以下	18~19	20~54	55~59	60~64	65以上
1074 - 1074	19,869 (8.9)	10,759 (11.6)	7,725 (8.0)	1,385 (4.1)		758 (76.4)	12,170 (7.5)	2,302 (9.0)	1,699 (10.8)	2,940 (15.2)
1075 - 1075	20,007 (8.9)	10,825 (11.6)	7,779 (8.1)	1,403 (4.1)		759 (76.5)	12,292 (7.6)	2,302 (9.0)	1,709 (10.8)	2,944 (15.2)
1076 - 1076	20,056 (9.0)	10,825 (11.6)	7,828 (8.1)	1,403 (4.1)		759 (76.5)	12,292 (7.6)	2,352 (9.2)	1,709 (10.8)	2,944 (15.2)
1077 - 1077	20,150 (9.0)	10,915 (11.7)	7,830 (8.1)	1,406 (4.1)		759 (76.5)	12,344 (7.6)	2,352 (9.2)	1,751 (11.1)	2,944 (15.2)
1078 - 1078	20,380 (9.1)	10,920 (11.7)	8,035 (8.3)	1,426 (4.2)		762 (76.8)	12,562 (7.8)	2,352 (9.2)	1,751 (11.1)	2,954 (15.3)
1079 - 1079	20,767 (9.3)	11,093 (11.9)	8,248 (8.5)	1,426 (4.2)		762 (76.8)	12,902 (8.0)	2,352 (9.2)	1,798 (11.4)	2,954 (15.3)
1080 - 1080	21,276 (9.5)	11,287 (12.1)	8,552 (8.9)	1,437 (4.2)		762 (76.8)	13,208 (8.2)	2,352 (9.2)	2,001 (12.7)	2,954 (15.3)
1081 - 1081	21,379 (9.6)	11,377 (12.2)	8,561 (8.9)	1,440 (4.2)		766 (77.2)	13,212 (8.2)	2,355 (9.2)	2,091 (13.3)	2,954 (15.3)
1082 - 1082	21,527 (9.6)	11,420 (12.3)	8,657 (9.0)	1,451 (4.3)		766 (77.2)	13,361 (8.3)	2,355 (9.2)	2,091 (13.3)	2,954 (15.3)
1083 - 1083	21,744 (9.7)	11,622 (12.5)	8,661 (9.0)	1,461 (4.3)		766 (77.2)	13,371 (8.3)	2,423 (9.4)	2,230 (14.1)	2,954 (15.3)
1084 - 1084	21,806 (9.8)	11,622 (12.5)	8,716 (9.0)	1,468 (4.3)		766 (77.2)	13,433 (8.3)	2,423 (9.4)	2,230 (14.1)	2,954 (15.3)
1085 - 1085	22,086 (9.9)	11,687 (12.6)	8,931 (9.2)	1,468 (4.3)		766 (77.2)	13,646 (8.4)	2,423 (9.4)	2,232 (14.1)	3,019 (15.6)
1086 - 1086	22,450 (10.0)	11,687 (12.6)	9,295 (9.6)	1,468 (4.3)		766 (77.2)	13,955 (8.6)	2,477 (9.7)	2,233 (14.2)	3,019 (15.6)
1087 - 1087	22,617 (10.1)	11,691 (12.6)	9,350 (9.7)	1,576 (4.6)		766 (77.2)	14,122 (8.7)	2,477 (9.7)	2,233 (14.2)	3,019 (15.6)
1088 - 1088	22,774 (10.2)	11,781 (12.7)	9,359 (9.7)	1,633 (4.8)		766 (77.2)	14,223 (8.8)	2,479 (9.7)	2,287 (14.5)	3,019 (15.6)
1089 - 1089	22,875 (10.2)	11,823 (12.7)	9,412 (9.7)	1,639 (4.8)		766 (77.2)	14,281 (8.8)	2,479 (9.7)	2,330 (14.8)	3,019 (15.6)
1090 - 1090	23,298 (10.4)	11,999 (12.9)	9,527 (9.9)	1,771 (5.2)		766 (77.2)	14,592 (9.0)	2,479 (9.7)	2,383 (15.1)	3,078 (15.9)
1091 - 1091	23,493 (10.5)	12,047 (12.9)	9,618 (10.0)	1,828 (5.4)		766 (77.2)	14,788 (9.1)	2,479 (9.7)	2,383 (15.1)	3,078 (15.9)
1092 - 1092	23,638 (10.6)	12,134 (13.0)	9,622 (10.0)	1,882 (5.5)		766 (77.2)	14,890 (9.2)	2,479 (9.7)	2,426 (15.4)	3,078 (15.9)
1093 - 1093	24,100 (10.8)	12,376 (13.3)	9,842 (10.2)	1,882 (5.5)		766 (77.2)	15,178 (9.4)	2,533 (9.9)	2,480 (15.7)	3,143 (16.3)
1094 - 1094	24,164 (10.8)	12,381 (13.3)	9,898 (10.2)	1,885 (5.5)		766 (77.2)	15,187 (9.4)	2,533 (9.9)	2,480 (15.7)	3,198 (16.5)
1095 - 1095	24,288 (10.9)	12,384 (13.3)	9,962 (10.3)	1,942 (5.7)		766 (77.2)	15,202 (9.4)	2,587 (10.1)	2,534 (16.1)	3,198 (16.5)
1096 - 1096	24,303 (10.9)	12,384 (13.3)	9,964 (10.3)	1,955 (5.7)		766 (77.2)	15,217 (9.4)	2,587 (10.1)	2,534 (16.1)	3,198 (16.5)
1097 - 1097	24,425 (10.9)	12,452 (13.4)	10,018 (10.4)	1,955 (5.7)		766 (77.2)	15,272 (9.4)	2,655 (10.4)	2,534 (16.1)	3,198 (16.5)
1098 - 1098	24,553 (11.0)	12,575 (13.5)	10,022 (10.4)	1,955 (5.7)		766 (77.2)	15,335 (9.5)	2,655 (10.4)	2,599 (16.5)	3,198 (16.5)
1099 - 1099	24,602 (11.0)	12,620 (13.6)	10,024 (10.4)	1,958 (5.8)		766 (77.2)	15,342 (9.5)	2,697 (10.5)	2,599 (16.5)	3,198 (16.5)

総括表(1)(産業・就業形態別の賃金額階級別、規模別、地域別、年齢別表)

06年 総括表(1)(一般労働者)

時間当り所定内賃金額 (3手当を除く)	合計	規模別(人)			年齢別(歳)					
		1~9	10~29	30以上	17以下	18~19	20~54	55~59	60~64	65以上
1100 - 1100	26,123 (11.7)	13,488 (14.5)	10,663 (11.0)	1,972 (5.8)		766 (77.2)	16,562 (10.2)	2,789 (10.9)	2,617 (16.6)	3,389 (17.5)
1101 - 1101	26,436 (11.8)	13,635 (14.7)	10,826 (11.2)	1,975 (5.8)		766 (77.2)	16,767 (10.4)	2,838 (11.1)	2,675 (17.0)	3,389 (17.5)
1102 - 1102	26,571 (11.9)	13,693 (14.7)	10,892 (11.3)	1,986 (5.8)		766 (77.2)	16,836 (10.4)	2,845 (11.1)	2,677 (17.0)	3,447 (17.8)
1103 - 1103	26,758 (12.0)	13,825 (14.9)	10,927 (11.3)	2,006 (5.9)		772 (77.8)	17,006 (10.5)	2,855 (11.1)	2,678 (17.0)	3,447 (17.8)
1104 - 1104	26,819 (12.0)	13,825 (14.9)	10,984 (11.4)	2,010 (5.9)		772 (77.8)	17,067 (10.5)	2,855 (11.1)	2,678 (17.0)	3,447 (17.8)
1105 - 1105	26,943 (12.0)	13,939 (15.0)	10,987 (11.4)	2,017 (5.9)		772 (77.8)	17,149 (10.6)	2,898 (11.3)	2,678 (17.0)	3,447 (17.8)
1106 - 1106	27,039 (12.1)	14,028 (15.1)	10,991 (11.4)	2,020 (5.9)		772 (77.8)	17,242 (10.7)	2,898 (11.3)	2,682 (17.0)	3,447 (17.8)
1107 - 1107	27,411 (12.3)	14,292 (15.4)	11,096 (11.5)	2,024 (6.0)		775 (78.1)	17,543 (10.8)	2,898 (11.3)	2,749 (17.4)	3,447 (17.8)
1108 - 1108	27,711 (12.4)	14,483 (15.6)	11,198 (11.6)	2,030 (6.0)		775 (78.1)	17,710 (10.9)	2,898 (11.3)	2,749 (17.4)	3,579 (18.5)
1109 - 1109	27,717 (12.4)	14,483 (15.6)	11,198 (11.6)	2,037 (6.0)		775 (78.1)	17,717 (10.9)	2,898 (11.3)	2,749 (17.4)	3,579 (18.5)
1110 - 1119	30,370 (13.6)	15,242 (16.4)	12,995 (13.5)	2,134 (6.3)		779 (78.6)	19,133 (11.8)	3,119 (12.2)	2,820 (17.9)	4,519 (23.4)
1120 - 1129	32,164 (14.4)	15,963 (17.2)	13,945 (14.4)	2,257 (6.6)		838 (84.5)	20,290 (12.5)	3,302 (12.9)	2,946 (18.7)	4,789 (24.8)
1130 - 1139	34,543 (15.4)	16,661 (17.9)	15,465 (16.0)	2,417 (7.1)		844 (85.1)	22,031 (13.6)	3,631 (14.2)	3,133 (19.9)	4,904 (25.4)
1140 - 1149	36,483 (16.3)	17,415 (18.7)	16,386 (17.0)	2,681 (7.9)		851 (85.8)	23,479 (14.5)	3,985 (15.5)	3,203 (20.3)	4,966 (25.7)
1150 - 1159	39,579 (17.7)	18,462 (19.8)	18,177 (18.8)	2,940 (8.6)		866 (87.2)	25,739 (15.9)	4,369 (17.0)	3,409 (21.6)	5,196 (26.9)
1160 - 1169	41,767 (18.7)	19,616 (21.1)	19,053 (19.7)	3,098 (9.1)		869 (87.6)	27,335 (16.9)	4,673 (18.2)	3,684 (23.4)	5,207 (26.9)
1170 - 1179	42,995 (19.2)	20,111 (21.6)	19,743 (20.4)	3,142 (9.2)		958 (96.6)	28,157 (17.4)	4,835 (18.9)	3,786 (24.0)	5,259 (27.2)
1180 - 1189	44,234 (19.8)	20,594 (22.1)	20,386 (21.1)	3,254 (9.6)		958 (96.6)	29,103 (18.0)	4,942 (19.3)	3,894 (24.7)	5,336 (27.6)
1190 - 1199	46,037 (20.6)	21,606 (23.2)	20,940 (21.7)	3,490 (10.3)		966 (97.3)	30,269 (18.7)	5,174 (20.2)	4,103 (26.0)	5,525 (28.6)
1200 - 1299	67,705 (30.3)	31,021 (33.3)	30,521 (31.6)	6,163 (18.1)		991 (99.8)	45,600 (28.2)	6,878 (26.8)	5,823 (36.9)	8,413 (43.5)
1300 - 1399	88,742 (39.7)	39,568 (42.5)	39,800 (41.2)	9,375 (27.6)	1 (100.0)	992 (100.0)	62,181 (38.4)	8,348 (32.6)	7,225 (45.8)	9,994 (51.7)
1400 - 1499	108,254 (48.4)	46,273 (49.7)	49,402 (51.2)	12,579 (37.0)			77,643 (48.0)	9,862 (38.5)	8,621 (54.7)	11,135 (57.6)
1500 - 1599	127,132 (56.8)	53,758 (57.8)	57,668 (59.7)	15,705 (46.2)			90,924 (56.2)	11,794 (46.0)	10,041 (63.7)	13,379 (69.2)
1600 - 1699	142,693 (63.8)	59,113 (63.5)	65,073 (67.4)	18,508 (54.4)			102,867 (63.5)	13,746 (53.6)	10,780 (68.3)	14,306 (74.0)
1700 - 1799	156,281 (69.9)	64,364 (69.2)	71,072 (73.6)	20,845 (61.3)			114,089 (70.5)	15,136 (59.0)	11,302 (71.6)	14,761 (76.3)
1800 - 1899	165,213 (73.9)	67,919 (73.0)	74,758 (77.4)	22,535 (66.3)			121,049 (74.8)	15,847 (61.8)	12,052 (76.4)	15,271 (79.0)

総括表(1)(産業・就業形態別の賃金額階級別、規模別、地域別、年齢別表)

06年 総括表(1)(一般労働者)

時間当り所定内賃金額 (3手当を除く)	合計	規模別(人)			年齢別(歳)					
		1~9	10~29	30以上	17以下	18~19	20~54	55~59	60~64	65以上
1900 - 1999	175,204 (78.3)	72,750 (78.2)	78,345 (81.1)	24,109 (70.9)			128,794 (79.6)	17,120 (66.8)	12,435 (78.8)	15,860 (82.0)
2000 -	223,629 (100.0)	93,049 (100.0)	96,578 (100.0)	34,002 (100.0)			161,882 (100.0)	25,642 (100.0)	15,775 (100.0)	19,336 (100.0)
月平均賃金額	268,862	260,771	263,850	305,236	239,940	130,616	270,634	301,919	256,024	227,757
時間当平均賃金額	1,674	1,669	1,622	1,837	1,333	1,056	1,657	1,860	1,630	1,640
月一人当たり 労働時間数	161	157	163	167	180	122	164	162	157	141
第1・20分位数	1,030	1,010	1,046	1,090	1,333	985	1,039	1,030	1,010	1,013
第1・10分位数	1,086	1,060	1,093	1,196	1,333	1,008	1,100	1,095	1,066	1,049
第1・4分位数	1,244	1,214	1,233	1,373	1,333	1,010	1,261	1,261	1,190	1,136
中位数	1,508	1,500	1,486	1,642	1,333	1,030	1,519	1,655	1,449	1,377
四分位偏差係数	0.2228	0.2380	0.2063	0.2232		0.0291	0.2113	0.3054	0.2367	0.2146

総括表(1)(産業・就業形態別の賃金額階級別、規模別、地域別、年齢別表)

06年 総括表(1)(パート労働者)

時間当たり所定内賃金額 (3手当を除く)	合計	規模別(人)			年齢別(歳)					
		1~9	10~29	30以上	17以下	18~19	20~54	55~59	60~64	65以上
計	173,052	61,080	100,475	11,497	3,468	11,884	97,953	14,684	16,376	28,688
円	1,732	601	1,120	11	89		298	63	395	888
- 997	(1.0)	(1.0)	(1.1)	(0.1)	(2.6)		(0.3)	(0.4)	(2.4)	(3.1)
998 - 998	1,732	601	1,120	11	89		298	63	395	888
	(1.0)	(1.0)	(1.1)	(0.1)	(2.6)		(0.3)	(0.4)	(2.4)	(3.1)
999 - 999	1,732	601	1,120	11	89		298	63	395	888
	(1.0)	(1.0)	(1.1)	(0.1)	(2.6)		(0.3)	(0.4)	(2.4)	(3.1)
1000 - 1000	2,640	1,020	1,609	11	89	113	755	153	464	1,066
	(1.5)	(1.7)	(1.6)	(0.1)	(2.6)	(0.9)	(0.8)	(1.0)	(2.8)	(3.7)
1001 - 1001	2,640	1,020	1,609	11	89	113	755	153	464	1,066
	(1.5)	(1.7)	(1.6)	(0.1)	(2.6)	(0.9)	(0.8)	(1.0)	(2.8)	(3.7)
1002 - 1002	2,640	1,020	1,609	11	89	113	755	153	464	1,066
	(1.5)	(1.7)	(1.6)	(0.1)	(2.6)	(0.9)	(0.8)	(1.0)	(2.8)	(3.7)
1003 - 1003	2,640	1,020	1,609	11	89	113	755	153	464	1,066
	(1.5)	(1.7)	(1.6)	(0.1)	(2.6)	(0.9)	(0.8)	(1.0)	(2.8)	(3.7)
1004 - 1004	2,640	1,020	1,609	11	89	113	755	153	464	1,066
	(1.5)	(1.7)	(1.6)	(0.1)	(2.6)	(0.9)	(0.8)	(1.0)	(2.8)	(3.7)
1005 - 1005	2,661	1,020	1,609	31	89	113	775	153	464	1,066
	(1.5)	(1.7)	(1.6)	(0.3)	(2.6)	(0.9)	(0.8)	(1.0)	(2.8)	(3.7)
1006 - 1006	2,662	1,022	1,609	31	89	113	776	153	464	1,066
	(1.5)	(1.7)	(1.6)	(0.3)	(2.6)	(0.9)	(0.8)	(1.0)	(2.8)	(3.7)
1007 - 1007	2,662	1,022	1,609	31	89	113	776	153	464	1,066
	(1.5)	(1.7)	(1.6)	(0.3)	(2.6)	(0.9)	(0.8)	(1.0)	(2.8)	(3.7)
1008 - 1008	19,643	5,046	13,803	794	1,104	2,250	10,028	1,171	1,643	3,447
	(11.4)	(8.3)	(13.7)	(6.9)	(31.8)	(18.9)	(10.2)	(8.0)	(10.0)	(12.0)
1009 - 1009	20,773	5,046	14,933	794	1,104	2,250	10,028	1,171	1,982	4,239
	(12.0)	(8.3)	(14.9)	(6.9)	(31.8)	(18.9)	(10.2)	(8.0)	(12.1)	(14.8)
1010 - 1010	44,198	10,640	31,581	1,976	2,094	4,926	23,117	2,456	3,835	7,770
	(25.5)	(17.4)	(31.4)	(17.2)	(60.4)	(41.5)	(23.6)	(16.7)	(23.4)	(27.1)
1011 - 1011	45,110	10,640	32,494	1,976	2,094	4,926	23,573	2,639	4,017	7,862
	(26.1)	(17.4)	(32.3)	(17.2)	(60.4)	(41.5)	(24.1)	(18.0)	(24.5)	(27.4)
1012 - 1012	45,224	10,640	32,598	1,986	2,094	4,936	23,573	2,639	4,066	7,916
	(26.1)	(17.4)	(32.4)	(17.3)	(60.4)	(41.5)	(24.1)	(18.0)	(24.8)	(27.6)
1013 - 1013	45,278	10,640	32,652	1,986	2,094	4,936	23,573	2,691	4,066	7,917
	(26.2)	(17.4)	(32.5)	(17.3)	(60.4)	(41.5)	(24.1)	(18.3)	(24.8)	(27.6)
1014 - 1014	45,572	10,640	32,926	2,006	2,094	4,936	23,776	2,783	4,066	7,917
	(26.3)	(17.4)	(32.8)	(17.5)	(60.4)	(41.5)	(24.3)	(19.0)	(24.8)	(27.6)
1015 - 1015	45,997	10,709	33,254	2,034	2,094	4,936	24,109	2,874	4,066	7,917
	(26.6)	(17.5)	(33.1)	(17.7)	(60.4)	(41.5)	(24.6)	(19.6)	(24.8)	(27.6)
1016 - 1016	46,606	10,709	33,853	2,044	2,094	4,936	24,172	2,965	4,267	8,172
	(26.9)	(17.5)	(33.7)	(17.8)	(60.4)	(41.5)	(24.7)	(20.2)	(26.1)	(28.5)
1017 - 1017	46,705	10,709	33,944	2,052	2,094	4,936	24,263	2,965	4,267	8,180
	(27.0)	(17.5)	(33.8)	(17.8)	(60.4)	(41.5)	(24.8)	(20.2)	(26.1)	(28.5)
1018 - 1018	47,046	10,713	34,271	2,062	2,094	4,936	24,598	2,969	4,267	8,182
	(27.2)	(17.5)	(34.1)	(17.9)	(60.4)	(41.5)	(25.1)	(20.2)	(26.1)	(28.5)
1019 - 1019	47,148	10,713	34,362	2,073	2,094	4,936	24,695	2,969	4,272	8,182
	(27.2)	(17.5)	(34.2)	(18.0)	(60.4)	(41.5)	(25.2)	(20.2)	(26.1)	(28.5)
1020 - 1020	51,715	11,738	37,611	2,365	2,094	5,216	27,504	3,384	4,655	8,863
	(29.9)	(19.2)	(37.4)	(20.6)	(60.4)	(43.9)	(28.1)	(23.0)	(28.4)	(30.9)
1021 - 1021	51,726	11,738	37,616	2,372	2,094	5,216	27,512	3,387	4,655	8,863
	(29.9)	(19.2)	(37.4)	(20.6)	(60.4)	(43.9)	(28.1)	(23.1)	(28.4)	(30.9)

総括表(1) (産業・就業形態別の賃金額階級別、規模別、地域別、年齢別表)

06年 総括表(1) (パート労働者)

時間当り所定内賃金額 (3手当を除く)	合計	規模別(人)			年齢別(歳)					
		1~9	10~29	30以上	17以下	18~19	20~54	55~59	60~64	65以上
1022 - 1022	51,891 (30.0)	11,803 (19.3)	37,708 (37.5)	2,380 (20.7)	2,094 (60.4)	5,216 (43.9)	27,519 (28.1)	3,478 (23.7)	4,655 (28.4)	8,929 (31.1)
1023 - 1023	52,071 (30.1)	11,892 (19.5)	37,800 (37.6)	2,380 (20.7)	2,094 (60.4)	5,304 (44.6)	27,610 (28.2)	3,478 (23.7)	4,655 (28.4)	8,929 (31.1)
1024 - 1024	52,515 (30.3)	11,957 (19.6)	38,135 (38.0)	2,424 (21.1)	2,094 (60.4)	5,304 (44.6)	27,794 (28.4)	3,666 (25.0)	4,665 (28.5)	8,992 (31.3)
1025 - 1025	52,742 (30.5)	12,061 (19.7)	38,225 (38.0)	2,456 (21.4)	2,094 (60.4)	5,308 (44.7)	27,990 (28.6)	3,677 (25.0)	4,665 (28.5)	9,008 (31.4)
1026 - 1026	53,048 (30.7)	12,149 (19.9)	38,388 (38.2)	2,510 (21.8)	2,094 (60.4)	5,397 (45.4)	27,990 (28.6)	3,677 (25.0)	4,720 (28.8)	9,171 (32.0)
1027 - 1027	53,147 (30.7)	12,149 (19.9)	38,481 (38.3)	2,516 (21.9)	2,094 (60.4)	5,397 (45.4)	28,081 (28.7)	3,677 (25.0)	4,720 (28.8)	9,179 (32.0)
1028 - 1028	53,254 (30.8)	12,241 (20.0)	38,486 (38.3)	2,526 (22.0)	2,094 (60.4)	5,485 (46.2)	28,087 (28.7)	3,687 (25.1)	4,720 (28.8)	9,182 (32.0)
1029 - 1029	53,705 (31.0)	12,241 (20.0)	38,938 (38.8)	2,526 (22.0)	2,094 (60.4)	5,485 (46.2)	28,425 (29.0)	3,800 (25.9)	4,720 (28.8)	9,182 (32.0)
1030 - 1030	58,080 (33.6)	14,434 (23.6)	40,875 (40.7)	2,771 (24.1)	2,633 (75.9)	5,751 (48.4)	30,711 (31.4)	4,238 (28.9)	5,150 (31.5)	9,598 (33.5)
1031 - 1031	58,177 (33.6)	14,436 (23.6)	40,970 (40.8)	2,771 (24.1)	2,633 (75.9)	5,751 (48.4)	30,715 (31.4)	4,238 (28.9)	5,241 (32.0)	9,599 (33.5)
1032 - 1032	58,190 (33.6)	14,436 (23.6)	40,970 (40.8)	2,785 (24.2)	2,633 (75.9)	5,751 (48.4)	30,715 (31.4)	4,248 (28.9)	5,241 (32.0)	9,602 (33.5)
1033 - 1033	58,381 (33.7)	14,529 (23.8)	41,064 (40.9)	2,787 (24.2)	2,633 (75.9)	5,751 (48.4)	30,899 (31.5)	4,253 (29.0)	5,241 (32.0)	9,604 (33.5)
1034 - 1034	58,381 (33.7)	14,529 (23.8)	41,064 (40.9)	2,787 (24.2)	2,633 (75.9)	5,751 (48.4)	30,899 (31.5)	4,253 (29.0)	5,241 (32.0)	9,604 (33.5)
1035 - 1035	58,551 (33.8)	14,598 (23.9)	41,156 (41.0)	2,797 (24.3)	2,633 (75.9)	5,751 (48.4)	30,899 (31.5)	4,263 (29.0)	5,310 (32.4)	9,695 (33.8)
1036 - 1036	58,613 (33.9)	14,602 (23.9)	41,210 (41.0)	2,801 (24.4)	2,633 (75.9)	5,751 (48.4)	30,903 (31.5)	4,263 (29.0)	5,314 (32.4)	9,750 (34.0)
1037 - 1037	58,767 (34.0)	14,755 (24.2)	41,210 (41.0)	2,801 (24.4)	2,633 (75.9)	5,840 (49.1)	30,903 (31.5)	4,328 (29.5)	5,314 (32.4)	9,750 (34.0)
1038 - 1038	59,265 (34.2)	14,909 (24.4)	41,437 (41.2)	2,919 (25.4)	2,633 (75.9)	5,840 (49.1)	31,228 (31.9)	4,393 (29.9)	5,422 (33.1)	9,750 (34.0)
1039 - 1039	59,265 (34.2)	14,909 (24.4)	41,437 (41.2)	2,919 (25.4)	2,633 (75.9)	5,840 (49.1)	31,228 (31.9)	4,393 (29.9)	5,422 (33.1)	9,750 (34.0)
1040 - 1040	62,933 (36.4)	15,974 (26.2)	43,785 (43.6)	3,173 (27.6)	2,724 (78.6)	5,928 (49.9)	32,820 (33.5)	4,921 (33.5)	6,173 (37.7)	10,366 (36.1)
1041 - 1041	62,988 (36.4)	15,976 (26.2)	43,785 (43.6)	3,227 (28.1)	2,724 (78.6)	5,928 (49.9)	32,820 (33.5)	4,975 (33.9)	6,173 (37.7)	10,368 (36.1)
1042 - 1042	62,998 (36.4)	15,976 (26.2)	43,785 (43.6)	3,238 (28.2)	2,724 (78.6)	5,928 (49.9)	32,820 (33.5)	4,985 (34.0)	6,173 (37.7)	10,368 (36.1)
1043 - 1043	63,091 (36.5)	16,064 (26.3)	43,789 (43.6)	3,238 (28.2)	2,724 (78.6)	6,017 (50.6)	32,820 (33.5)	4,989 (34.0)	6,173 (37.7)	10,368 (36.1)
1044 - 1044	63,273 (36.6)	16,064 (26.3)	43,972 (43.8)	3,238 (28.2)	2,724 (78.6)	6,017 (50.6)	32,911 (33.6)	4,989 (34.0)	6,265 (38.3)	10,368 (36.1)
1045 - 1045	63,492 (36.7)	16,218 (26.6)	44,026 (43.8)	3,248 (28.2)	2,724 (78.6)	6,017 (50.6)	33,129 (33.8)	4,989 (34.0)	6,265 (38.3)	10,368 (36.1)
1046 - 1046	63,542 (36.7)	16,262 (26.6)	44,026 (43.8)	3,254 (28.3)	2,724 (78.6)	6,017 (50.6)	33,180 (33.9)	4,989 (34.0)	6,265 (38.3)	10,368 (36.1)
1047 - 1047	63,550 (36.7)	16,267 (26.6)	44,026 (43.8)	3,257 (28.3)	2,724 (78.6)	6,017 (50.6)	33,187 (33.9)	4,989 (34.0)	6,265 (38.3)	10,368 (36.1)

総括表(1)(産業・就業形態別の賃金額階級別、規模別、地域別、年齢別表)

06年 総括表(1)(パート労働者)

時間当り所定内賃金額 (3手当を除く)	合計	規模別(人)			年齢別(歳)					
		1~9	10~29	30以上	17以下	18~19	20~54	55~59	60~64	65以上
1048 - 1048	63,558 (36.7)	16,267 (26.6)	44,026 (43.8)	3,265 (28.4)	2,724 (78.6)	6,017 (50.6)	33,196 (33.9)	4,989 (34.0)	6,265 (38.3)	10,368 (36.1)
1049 - 1049	63,650 (36.8)	16,267 (26.6)	44,117 (43.9)	3,265 (28.4)	2,724 (78.6)	6,017 (50.6)	33,196 (33.9)	4,989 (34.0)	6,265 (38.3)	10,459 (36.5)
1050 - 1050	76,808 (44.4)	22,547 (36.9)	50,349 (50.1)	3,911 (34.0)	2,946 (85.0)	7,937 (66.8)	41,316 (42.2)	5,926 (40.4)	6,814 (41.6)	11,869 (41.4)
1051 - 1051	76,850 (44.4)	22,590 (37.0)	50,349 (50.1)	3,911 (34.0)	2,946 (85.0)	7,937 (66.8)	41,316 (42.2)	5,926 (40.4)	6,814 (41.6)	11,911 (41.5)
1052 - 1052	76,853 (44.4)	22,590 (37.0)	50,349 (50.1)	3,914 (34.0)	2,946 (85.0)	7,937 (66.8)	41,316 (42.2)	5,929 (40.4)	6,814 (41.6)	11,911 (41.5)
1053 - 1053	76,908 (44.4)	22,632 (37.1)	50,349 (50.1)	3,927 (34.2)	2,946 (85.0)	7,937 (66.8)	41,316 (42.2)	5,939 (40.4)	6,817 (41.6)	11,953 (41.7)
1054 - 1054	76,918 (44.4)	22,632 (37.1)	50,349 (50.1)	3,937 (34.2)	2,946 (85.0)	7,937 (66.8)	41,327 (42.2)	5,939 (40.4)	6,817 (41.6)	11,953 (41.7)
1055 - 1055	77,108 (44.6)	22,808 (37.3)	50,349 (50.1)	3,951 (34.4)	2,946 (85.0)	7,937 (66.8)	41,451 (42.3)	5,939 (40.4)	6,817 (41.6)	12,018 (41.9)
1056 - 1056	77,373 (44.7)	22,958 (37.6)	50,462 (50.2)	3,954 (34.4)	2,946 (85.0)	7,937 (66.8)	41,516 (42.4)	5,942 (40.5)	6,901 (42.1)	12,131 (42.3)
1057 - 1057	77,503 (44.8)	23,087 (37.8)	50,462 (50.2)	3,954 (34.4)	2,946 (85.0)	7,937 (66.8)	41,516 (42.4)	5,942 (40.5)	6,901 (42.1)	12,261 (42.7)
1058 - 1058	77,709 (44.9)	23,205 (38.0)	50,464 (50.2)	4,041 (35.1)	2,946 (85.0)	7,937 (66.8)	41,580 (42.4)	6,013 (41.0)	6,913 (42.2)	12,320 (42.9)
1059 - 1059	77,837 (45.0)	23,270 (38.1)	50,516 (50.3)	4,051 (35.2)	2,946 (85.0)	7,937 (66.8)	41,590 (42.5)	6,013 (41.0)	6,966 (42.5)	12,385 (43.2)
1060 - 1060	81,581 (47.1)	24,234 (39.7)	53,137 (52.9)	4,211 (36.6)	3,037 (87.6)	8,485 (71.4)	43,890 (44.8)	6,091 (41.5)	7,401 (45.2)	12,678 (44.2)
1061 - 1061	81,588 (47.1)	24,234 (39.7)	53,137 (52.9)	4,217 (36.7)	3,037 (87.6)	8,485 (71.4)	43,896 (44.8)	6,091 (41.5)	7,401 (45.2)	12,678 (44.2)
1062 - 1062	81,719 (47.2)	24,365 (39.9)	53,137 (52.9)	4,217 (36.7)	3,037 (87.6)	8,485 (71.4)	44,027 (44.9)	6,091 (41.5)	7,401 (45.2)	12,678 (44.2)
1063 - 1063	81,719 (47.2)	24,365 (39.9)	53,137 (52.9)	4,217 (36.7)	3,037 (87.6)	8,485 (71.4)	44,027 (44.9)	6,091 (41.5)	7,401 (45.2)	12,678 (44.2)
1064 - 1064	83,189 (48.1)	25,162 (41.2)	53,751 (53.5)	4,276 (37.2)	3,037 (87.6)	8,485 (71.4)	45,142 (46.1)	6,259 (42.6)	7,497 (45.8)	12,769 (44.5)
1065 - 1065	83,588 (48.3)	25,292 (41.4)	53,803 (53.5)	4,493 (39.1)	3,037 (87.6)	8,485 (71.4)	45,405 (46.4)	6,259 (42.6)	7,507 (45.8)	12,895 (44.9)
1066 - 1066	83,772 (48.4)	25,294 (41.4)	53,986 (53.7)	4,493 (39.1)	3,037 (87.6)	8,485 (71.4)	45,499 (46.4)	6,350 (43.2)	7,507 (45.8)	12,895 (44.9)
1067 - 1067	83,803 (48.4)	25,294 (41.4)	53,986 (53.7)	4,523 (39.3)	3,037 (87.6)	8,485 (71.4)	45,529 (46.5)	6,350 (43.2)	7,507 (45.8)	12,895 (44.9)
1068 - 1068	83,931 (48.5)	25,294 (41.4)	54,091 (53.8)	4,546 (39.5)	3,037 (87.6)	8,485 (71.4)	45,585 (46.5)	6,350 (43.2)	7,510 (45.9)	12,965 (45.2)
1069 - 1069	83,931 (48.5)	25,294 (41.4)	54,091 (53.8)	4,546 (39.5)	3,037 (87.6)	8,485 (71.4)	45,585 (46.5)	6,350 (43.2)	7,510 (45.9)	12,965 (45.2)
1070 - 1070	87,460 (50.5)	26,690 (43.7)	56,023 (55.8)	4,747 (41.3)	3,239 (93.4)	8,710 (73.3)	47,753 (48.8)	6,753 (46.0)	7,782 (47.5)	13,223 (46.1)
1071 - 1071	87,653 (50.7)	26,690 (43.7)	56,205 (55.9)	4,757 (41.4)	3,239 (93.4)	8,710 (73.3)	47,945 (48.9)	6,753 (46.0)	7,782 (47.5)	13,223 (46.1)
1072 - 1072	87,833 (50.8)	26,779 (43.8)	56,296 (56.0)	4,757 (41.4)	3,239 (93.4)	8,710 (73.3)	48,037 (49.0)	6,753 (46.0)	7,782 (47.5)	13,312 (46.4)
1073 - 1073	87,834 (50.8)	26,779 (43.8)	56,298 (56.0)	4,757 (41.4)	3,239 (93.4)	8,710 (73.3)	48,038 (49.0)	6,753 (46.0)	7,782 (47.5)	13,312 (46.4)

総括表(1) (産業・就業形態別の賃金額階級別、規模別、地域別、年齢別表)

06年 総括表(1) (パート労働者)

時間当り所定内賃金額 (3手当を除く)	合計	規模別(人)			年齢別(歳)					
		1~9	10~29	30以上	17以下	18~19	20~54	55~59	60~64	65以上
1074 - 1074	87,936 (50.8)	26,779 (43.8)	56,389 (56.1)	4,768 (41.5)	3,239 (93.4)	8,710 (73.3)	48,129 (49.1)	6,763 (46.1)	7,782 (47.5)	13,312 (46.4)
1075 - 1075	88,223 (51.0)	26,821 (43.9)	56,533 (56.3)	4,869 (42.4)	3,239 (93.4)	8,710 (73.3)	48,180 (49.2)	6,906 (47.0)	7,823 (47.8)	13,364 (46.6)
1076 - 1076	88,772 (51.3)	26,863 (44.0)	56,716 (56.4)	5,193 (45.2)	3,239 (93.4)	8,710 (73.3)	48,637 (49.7)	6,998 (47.7)	7,823 (47.8)	13,364 (46.6)
1077 - 1077	88,863 (51.4)	26,863 (44.0)	56,807 (56.5)	5,193 (45.2)	3,239 (93.4)	8,710 (73.3)	48,729 (49.7)	6,998 (47.7)	7,823 (47.8)	13,364 (46.6)
1078 - 1078	89,093 (51.5)	27,011 (44.2)	56,809 (56.5)	5,274 (45.9)	3,239 (93.4)	8,710 (73.3)	48,896 (49.9)	7,008 (47.7)	7,835 (47.8)	13,405 (46.7)
1079 - 1079	89,183 (51.5)	27,099 (44.4)	56,810 (56.5)	5,274 (45.9)	3,239 (93.4)	8,710 (73.3)	48,986 (50.0)	7,008 (47.7)	7,835 (47.8)	13,405 (46.7)
1080 - 1080	91,617 (52.9)	27,555 (45.1)	57,913 (57.6)	6,148 (53.5)	3,352 (96.7)	9,053 (76.2)	50,320 (51.4)	7,174 (48.9)	8,097 (49.4)	13,622 (47.5)
1081 - 1081	91,663 (53.0)	27,598 (45.2)	57,917 (57.6)	6,148 (53.5)	3,352 (96.7)	9,053 (76.2)	50,362 (51.4)	7,174 (48.9)	8,101 (49.5)	13,622 (47.5)
1082 - 1082	91,814 (53.1)	27,686 (45.3)	57,970 (57.7)	6,158 (53.6)	3,352 (96.7)	9,053 (76.2)	50,425 (51.5)	7,263 (49.5)	8,101 (49.5)	13,622 (47.5)
1083 - 1083	91,861 (53.1)	27,688 (45.3)	57,974 (57.7)	6,199 (53.9)	3,352 (96.7)	9,053 (76.2)	50,457 (51.5)	7,263 (49.5)	8,115 (49.6)	13,622 (47.5)
1084 - 1084	91,966 (53.1)	27,731 (45.4)	58,026 (57.8)	6,209 (54.0)	3,352 (96.7)	9,053 (76.2)	50,510 (51.6)	7,263 (49.5)	8,115 (49.6)	13,674 (47.7)
1085 - 1085	93,125 (53.8)	28,707 (47.0)	58,128 (57.9)	6,290 (54.7)	3,352 (96.7)	9,053 (76.2)	51,008 (52.1)	7,283 (49.6)	8,292 (50.6)	14,137 (49.3)
1086 - 1086	94,696 (54.7)	30,268 (49.6)	58,128 (57.9)	6,300 (54.8)	3,352 (96.7)	9,053 (76.2)	51,528 (52.6)	7,543 (51.4)	8,736 (53.3)	14,484 (50.5)
1087 - 1087	94,801 (54.8)	30,268 (49.6)	58,233 (58.0)	6,300 (54.8)	3,352 (96.7)	9,053 (76.2)	51,581 (52.7)	7,543 (51.4)	8,789 (53.7)	14,484 (50.5)
1088 - 1088	94,822 (54.8)	30,268 (49.6)	58,233 (58.0)	6,321 (55.0)	3,352 (96.7)	9,053 (76.2)	51,591 (52.7)	7,543 (51.4)	8,799 (53.7)	14,484 (50.5)
1089 - 1089	94,874 (54.8)	30,268 (49.6)	58,286 (58.0)	6,321 (55.0)	3,352 (96.7)	9,053 (76.2)	51,591 (52.7)	7,596 (51.7)	8,799 (53.7)	14,484 (50.5)
1090 - 1090	96,401 (55.7)	30,675 (50.2)	59,277 (59.0)	6,449 (56.1)	3,352 (96.7)	9,166 (77.1)	52,596 (53.7)	7,683 (52.3)	9,001 (55.0)	14,604 (50.9)
1091 - 1091	96,678 (55.9)	30,675 (50.2)	59,544 (59.3)	6,459 (56.2)	3,352 (96.7)	9,166 (77.1)	52,754 (53.9)	7,687 (52.3)	9,063 (55.3)	14,656 (51.1)
1092 - 1092	96,836 (56.0)	30,679 (50.2)	59,687 (59.4)	6,469 (56.3)	3,352 (96.7)	9,166 (77.1)	52,847 (54.0)	7,739 (52.7)	9,073 (55.4)	14,658 (51.1)
1093 - 1093	96,941 (56.0)	30,679 (50.2)	59,793 (59.5)	6,469 (56.3)	3,352 (96.7)	9,166 (77.1)	52,952 (54.1)	7,739 (52.7)	9,073 (55.4)	14,658 (51.1)
1094 - 1094	96,948 (56.0)	30,679 (50.2)	59,797 (59.5)	6,472 (56.3)	3,352 (96.7)	9,166 (77.1)	52,959 (54.1)	7,739 (52.7)	9,073 (55.4)	14,658 (51.1)
1095 - 1095	97,270 (56.2)	30,832 (50.5)	59,904 (59.6)	6,533 (56.8)	3,352 (96.7)	9,166 (77.1)	53,097 (54.2)	7,804 (53.1)	9,104 (55.6)	14,747 (51.4)
1096 - 1096	97,397 (56.3)	30,897 (50.6)	59,956 (59.7)	6,544 (56.9)	3,352 (96.7)	9,166 (77.1)	53,225 (54.3)	7,804 (53.1)	9,104 (55.6)	14,747 (51.4)
1097 - 1097	97,397 (56.3)	30,897 (50.6)	59,956 (59.7)	6,544 (56.9)	3,352 (96.7)	9,166 (77.1)	53,225 (54.3)	7,804 (53.1)	9,104 (55.6)	14,747 (51.4)
1098 - 1098	97,520 (56.4)	30,908 (50.6)	60,065 (59.8)	6,547 (57.0)	3,352 (96.7)	9,166 (77.1)	53,279 (54.4)	7,866 (53.6)	9,109 (55.6)	14,749 (51.4)
1099 - 1099	97,520 (56.4)	30,908 (50.6)	60,065 (59.8)	6,547 (57.0)	3,352 (96.7)	9,166 (77.1)	53,279 (54.4)	7,866 (53.6)	9,109 (55.6)	14,749 (51.4)

総括表(1) (産業・就業形態別の賃金額階級別、規模別、地域別、年齢別表)

06年 総括表(1) (パート労働者)

時間当り所定内賃金額 (3手当を除く)	合計	規模別(人)			年齢別(歳)					
		1~9	10~29	30以上	17以下	18~19	20~54	55~59	60~64	65以上
1100 - 1100	112,114 (64.8)	38,435 (62.9)	66,358 (66.0)	7,321 (63.7)	3,352 (96.7)	10,216 (86.0)	62,884 (64.2)	8,760 (59.7)	10,278 (62.8)	16,624 (57.9)
1101 - 1101	112,241 (64.9)	38,435 (62.9)	66,465 (66.2)	7,341 (63.9)	3,352 (96.7)	10,216 (86.0)	62,990 (64.3)	8,760 (59.7)	10,298 (62.9)	16,624 (57.9)
1102 - 1102	112,283 (64.9)	38,477 (63.0)	66,465 (66.2)	7,341 (63.9)	3,352 (96.7)	10,216 (86.0)	62,990 (64.3)	8,760 (59.7)	10,298 (62.9)	16,667 (58.1)
1103 - 1103	112,342 (64.9)	38,536 (63.1)	66,465 (66.2)	7,341 (63.9)	3,352 (96.7)	10,216 (86.0)	62,990 (64.3)	8,760 (59.7)	10,298 (62.9)	16,725 (58.3)
1104 - 1104	112,409 (65.0)	38,536 (63.1)	66,521 (66.2)	7,352 (63.9)	3,352 (96.7)	10,216 (86.0)	62,995 (64.3)	8,760 (59.7)	10,308 (62.9)	16,778 (58.5)
1105 - 1105	112,494 (65.0)	38,601 (63.2)	66,521 (66.2)	7,372 (64.1)	3,352 (96.7)	10,216 (86.0)	62,995 (64.3)	8,836 (60.2)	10,319 (63.0)	16,778 (58.5)
1106 - 1106	112,599 (65.1)	38,601 (63.2)	66,626 (66.3)	7,372 (64.1)	3,352 (96.7)	10,216 (86.0)	63,047 (64.4)	8,836 (60.2)	10,319 (63.0)	16,830 (58.7)
1107 - 1107	112,662 (65.1)	38,601 (63.2)	66,679 (66.4)	7,382 (64.2)	3,352 (96.7)	10,216 (86.0)	63,057 (64.4)	8,836 (60.2)	10,371 (63.3)	16,830 (58.7)
1108 - 1108	112,663 (65.1)	38,601 (63.2)	66,680 (66.4)	7,382 (64.2)	3,352 (96.7)	10,216 (86.0)	63,057 (64.4)	8,836 (60.2)	10,371 (63.3)	16,832 (58.7)
1109 - 1109	112,667 (65.1)	38,601 (63.2)	66,680 (66.4)	7,386 (64.2)	3,352 (96.7)	10,216 (86.0)	63,061 (64.4)	8,836 (60.2)	10,371 (63.3)	16,832 (58.7)
1110 - 1119	115,053 (66.5)	39,419 (64.5)	67,444 (67.1)	8,191 (71.2)	3,352 (96.7)	10,216 (86.0)	64,277 (65.6)	9,176 (62.5)	10,885 (66.5)	17,147 (59.8)
1120 - 1129	117,232 (67.7)	39,929 (65.4)	68,591 (68.3)	8,711 (75.8)	3,352 (96.7)	10,329 (86.9)	65,431 (66.8)	9,330 (63.5)	11,260 (68.8)	17,531 (61.1)
1130 - 1139	118,088 (68.2)	40,184 (65.8)	68,921 (68.6)	8,984 (78.1)	3,352 (96.7)	10,329 (86.9)	65,939 (67.3)	9,497 (64.7)	11,368 (69.4)	17,604 (61.4)
1140 - 1149	119,573 (69.1)	40,423 (66.2)	69,937 (69.6)	9,213 (80.1)	3,352 (96.7)	10,442 (87.9)	66,797 (68.2)	9,710 (66.1)	11,483 (70.1)	17,790 (62.0)
1150 - 1159	124,049 (71.7)	42,094 (68.9)	72,470 (72.1)	9,484 (82.5)	3,352 (96.7)	10,555 (88.8)	69,692 (71.1)	10,108 (68.8)	11,859 (72.4)	18,483 (64.4)
1160 - 1169	125,286 (72.4)	42,364 (69.4)	73,274 (72.9)	9,648 (83.9)	3,352 (96.7)	10,555 (88.8)	70,531 (72.0)	10,213 (69.5)	11,978 (73.1)	18,658 (65.0)
1170 - 1179	125,753 (72.7)	42,580 (69.7)	73,330 (73.0)	9,843 (85.6)	3,352 (96.7)	10,597 (89.2)	70,819 (72.3)	10,248 (69.8)	11,999 (73.3)	18,738 (65.3)
1180 - 1189	126,798 (73.3)	42,949 (70.3)	73,888 (73.5)	9,961 (86.6)	3,352 (96.7)	10,597 (89.2)	71,236 (72.7)	10,468 (71.3)	12,101 (73.9)	19,044 (66.4)
1190 - 1199	127,383 (73.6)	43,270 (70.8)	74,089 (73.7)	10,025 (87.2)	3,352 (96.7)	10,597 (89.2)	71,471 (73.0)	10,554 (71.9)	12,122 (74.0)	19,287 (67.2)
1200 - 1299	146,839 (84.9)	49,465 (81.0)	86,497 (86.1)	10,877 (94.6)	3,468 (100.0)	11,768 (99.0)	83,713 (85.5)	12,086 (82.3)	13,518 (82.5)	22,287 (77.7)
1300 - 1399	153,045 (88.4)	52,058 (85.2)	89,947 (89.5)	11,040 (96.0)		11,771 (99.1)	87,558 (89.4)	12,459 (84.9)	14,163 (86.5)	23,626 (82.4)
1400 - 1499	156,574 (90.5)	53,432 (87.5)	91,873 (91.4)	11,269 (98.0)		11,771 (99.1)	89,715 (91.6)	13,008 (88.6)	14,336 (87.5)	24,278 (84.6)
1500 - 1599	160,522 (92.8)	54,870 (89.8)	94,293 (93.8)	11,359 (98.8)		11,884 (100.0)	91,568 (93.5)	13,174 (89.7)	14,645 (89.4)	25,784 (89.9)
1600 - 1699	162,813 (94.1)	55,851 (91.4)	95,580 (95.1)	11,382 (99.0)			92,510 (94.4)	13,470 (91.7)	15,229 (93.0)	26,253 (91.5)
1700 - 1799	163,948 (94.7)	56,007 (91.7)	96,541 (96.1)	11,400 (99.2)			93,245 (95.2)	13,524 (92.1)	15,335 (93.6)	26,493 (92.3)
1800 - 1899	166,013 (95.9)	56,967 (93.3)	97,636 (97.2)	11,409 (99.2)			94,200 (96.2)	13,950 (95.0)	15,524 (94.8)	26,987 (94.1)

総括表(1) (産業・就業形態別の賃金額階級別、規模別、地域別、年齢別表)

06年 総括表(1) (パート労働者)

時間当り所定内賃金額 (3手当を除く)	合計	規模別(人)			年齢別(歳)					
		1~9	10~29	30以上	17以下	18~19	20~54	55~59	60~64	65以上
1900 - 1999	166,748 (96.4)	57,406 (94.0)	97,899 (97.4)	11,443 (99.5)			94,602 (96.6)	14,053 (95.7)	15,526 (94.8)	27,216 (94.9)
2000 -	173,052 (100.0)	61,080 (100.0)	100,475 (100.0)	11,497 (100.0)			97,953 (100.0)	14,684 (100.0)	16,376 (100.0)	28,688 (100.0)
月平均賃金額	88,541	91,746	82,865	121,121	41,912	47,170	88,384	103,958	102,232	96,147
時間当平均賃金額	1,195	1,275	1,156	1,110	1,028	1,060	1,183	1,198	1,311	1,244
月一人当たり 労働時間数	75	75	71	109	41	45	75	89	85	80
第1・20分位数	1,008	1,008	1,008	1,008	1,008	1,008	1,008	1,008	1,008	1,008
第1・10分位数	1,008	1,010	1,008	1,010	1,008	1,008	1,008	1,010	1,008	1,008
第1・4分位数	1,010	1,040	1,010	1,038	1,008	1,010	1,018	1,025	1,016	1,010
中位数	1,070	1,090	1,050	1,080	1,010	1,043	1,079	1,086	1,085	1,086
四分位偏差係数	0.0888	0.0734	0.0905	0.0380	0.0109	0.0336	0.0843	0.0806	0.0848	0.1151

総括表(2) (産業・就業形態別の賃金額階級別、性別年齢別表)

06年 総括表(2) (全ての労働者)

時間当り所定内賃金額 (3手当を除く)	合計	男(歳)							女(歳)						
		男性計	17以下	18~19	20~54	55~59	60~64	65以上	女性計	17以下	18~19	20~54	55~59	60~64	65以上
1,170 - 1,179	168,748 (42.5)	51,576 (28.9)	1,396 (99.7)	4,757 (89.3)	30,820 (25.6)	2,127 (12.9)	3,326 (27.1)	9,150 (41.1)	117,172 (53.7)	1,956 (94.5)	6,798 (90.1)	68,157 (49.0)	12,955 (54.4)	12,459 (62.7)	14,847 (57.6)
1,180 - 1,189	171,031 (43.1)	52,059 (29.2)	1,396 (99.7)	4,757 (89.3)	31,036 (25.7)	2,129 (12.9)	3,378 (27.5)	9,363 (42.1)	118,972 (54.5)	1,956 (94.5)	6,798 (90.1)	69,303 (49.8)	13,281 (55.7)	12,617 (63.5)	15,017 (58.3)
1,190 - 1,199	173,420 (43.7)	53,007 (29.7)	1,396 (99.7)	4,765 (89.4)	31,516 (26.1)	2,296 (13.9)	3,546 (28.9)	9,489 (42.6)	120,413 (55.2)	1,956 (94.5)	6,798 (90.1)	70,225 (50.4)	13,432 (56.4)	12,679 (63.8)	15,323 (59.5)
1,200 - 1,299	214,544 (54.1)	71,291 (40.0)	1,399 (99.9)	5,210 (97.8)	43,794 (36.3)	3,466 (21.0)	4,909 (40.0)	12,513 (56.2)	143,254 (65.6)	2,069 (100.0)	7,548 (100.0)	85,519 (61.4)	15,498 (65.0)	14,432 (72.6)	18,188 (70.6)
1,300 - 1,399	241,787 (61.0)	83,005 (46.5)	1,400 (100.0)	5,215 (97.9)	52,503 (43.5)	4,023 (24.4)	6,026 (49.1)	13,839 (62.2)	158,782 (72.7)			97,237 (69.8)	16,785 (70.4)	15,361 (77.3)	19,782 (76.8)
1,400 - 1,499	264,829 (66.8)	94,639 (53.1)		5,215 (97.9)	60,905 (50.5)	4,992 (30.3)	7,073 (57.6)	15,054 (67.7)	170,189 (78.0)			106,452 (76.5)	17,877 (75.0)	15,884 (79.9)	20,358 (79.0)
1,500 - 1,599	287,654 (72.5)	106,064 (59.5)		5,328 (100.0)	68,477 (56.8)	6,383 (38.7)	7,773 (63.3)	16,703 (75.1)	181,590 (83.2)			114,015 (81.9)	18,585 (78.0)	16,913 (85.1)	22,459 (87.1)
1,600 - 1,699	305,506 (77.0)	116,640 (65.4)			76,451 (63.4)	7,422 (45.0)	8,436 (68.7)	17,603 (79.1)	188,866 (86.5)			118,926 (85.4)	19,794 (83.0)	17,573 (88.4)	22,955 (89.1)
1,700 - 1,799	320,229 (80.7)	125,927 (70.6)			83,979 (69.6)	8,485 (51.5)	8,761 (71.4)	17,974 (80.8)	194,301 (89.0)			123,355 (88.6)	20,175 (84.6)	17,875 (89.9)	23,279 (90.3)
1,800 - 1,899	331,225 (83.5)	131,486 (73.7)			88,374 (73.3)	8,817 (53.5)	9,214 (75.0)	18,354 (82.5)	199,740 (91.5)			126,875 (91.1)	20,980 (88.0)	18,363 (92.4)	23,904 (92.7)
1,900 - 1,999	341,952 (86.2)	139,034 (77.9)			94,222 (78.1)	9,746 (59.1)	9,457 (77.0)	18,882 (84.9)	202,918 (92.9)			129,174 (92.8)	21,428 (89.9)	18,504 (93.1)	24,195 (93.9)
2,000 -	396,681 (100.0)	178,365 (100.0)			120,618 (100.0)	16,491 (100.0)	12,277 (100.0)	22,251 (100.0)	218,316 (100.0)			139,217 (100.0)	23,836 (100.0)	19,873 (100.0)	25,773 (100.0)
月平均賃金額	190,197	241,641	47,677	57,298	248,804	325,481	247,156	193,978	148,167	38,155	50,992	161,316	163,664	134,775	110,424
時間当り平均賃金額	1,465	1,643	1,021	1,056	1,636	2,001	1,788	1,513	1,320	1,033	1,062	1,341	1,355	1,269	1,309
月一人当たり労働時間数	123	142	47	54	146	162	148	126	109	37	48	116	117	103	86
第1・20分位数	1,008	1,008	1,008	1,008	1,010	1,029	1,010	1,008	1,008	1,008	1,008	1,008	1,010	1,008	1,000
第1・10分位数	1,010	1,020	1,008	1,008	1,030	1,134	1,035	1,015	1,010	1,008	1,008	1,010	1,010	1,010	1,008
第1・4分位数	1,064	1,119	1,008	1,008	1,164	1,404	1,130	1,084	1,050	1,008	1,010	1,050	1,050	1,038	1,010
中位数	1,250	1,452	1,010	1,010	1,489	1,777	1,404	1,245	1,150	1,010	1,050	1,193	1,150	1,100	1,110
四分位偏差係数	0.2356	0.2769	0.0109	0.0208	0.2576	0.2881	0.2731	0.2032	0.1713	0.0257	0.0429	0.1769	0.1917	0.1386	0.1532

総括表(2)(産業・就業形態別の賃金額階級別、性別年齢別表)

06年 総括表(2)(一般労働者)

時間当り所定内賃金額 (3手当を除く)	合計	男(歳)							女(歳)						
		男性計	17以下	18~19	20~54	55~59	60~64	65以上	女性計	17以下	18~19	20~54	55~59	60~64	65以上
1,026 - 1,026	10,737 (4.8)	3,693 (2.8)		395 (55.0)	2,005 (2.1)	424 (2.8)	268 (3.0)	602 (4.9)	7,044 (7.6)			4,950 (7.4)	779 (7.3)	602 (8.7)	712 (9.9)
1,027 - 1,027	10,793 (4.8)	3,693 (2.8)		395 (55.0)	2,005 (2.1)	424 (2.8)	268 (3.0)	602 (4.9)	7,100 (7.7)			5,006 (7.5)	779 (7.3)	602 (8.7)	712 (9.9)
1,028 - 1,028	10,901 (4.9)	3,801 (2.9)		395 (55.0)	2,022 (2.1)	424 (2.8)	268 (3.0)	693 (5.7)	7,100 (7.7)			5,006 (7.5)	779 (7.3)	602 (8.7)	712 (9.9)
1,029 - 1,029	10,966 (4.9)	3,801 (2.9)		395 (55.0)	2,022 (2.1)	424 (2.8)	268 (3.0)	693 (5.7)	7,165 (7.8)			5,006 (7.5)	779 (7.3)	602 (8.7)	777 (10.8)
1,030 - 1,030	11,714 (5.2)	4,136 (3.1)		483 (67.3)	2,091 (2.2)	424 (2.8)	269 (3.0)	869 (7.1)	7,578 (8.2)		89 (32.3)	5,240 (7.8)	871 (8.1)	602 (8.7)	777 (10.8)
1,031 - 1,031	11,864 (5.3)	4,279 (3.3)		483 (67.3)	2,181 (2.3)	424 (2.8)	273 (3.1)	918 (7.6)	7,585 (8.2)		89 (32.3)	5,242 (7.8)	871 (8.1)	606 (8.8)	777 (10.8)
1,032 - 1,032	11,879 (5.3)	4,283 (3.3)		483 (67.3)	2,181 (2.3)	424 (2.8)	273 (3.1)	922 (7.6)	7,596 (8.2)		89 (32.3)	5,249 (7.8)	875 (8.2)	606 (8.8)	777 (10.8)
1,033 - 1,033	11,886 (5.3)	4,287 (3.3)		483 (67.3)	2,181 (2.3)	424 (2.8)	273 (3.1)	926 (7.6)	7,599 (8.2)		89 (32.3)	5,253 (7.8)	875 (8.2)	606 (8.8)	777 (10.8)
1,034 - 1,034	12,069 (5.4)	4,294 (3.3)		485 (67.5)	2,187 (2.3)	424 (2.8)	273 (3.1)	926 (7.6)	7,775 (8.4)		89 (32.3)	5,428 (8.1)	875 (8.2)	606 (8.8)	777 (10.8)
1,035 - 1,035	12,205 (5.5)	4,357 (3.3)		485 (67.5)	2,191 (2.3)	428 (2.9)	273 (3.1)	980 (8.1)	7,847 (8.5)		89 (32.3)	5,436 (8.1)	875 (8.2)	606 (8.8)	842 (11.7)
1,036 - 1,036	12,398 (5.5)	4,466 (3.4)		488 (68.0)	2,297 (2.4)	428 (2.9)	273 (3.1)	980 (8.1)	7,932 (8.6)		89 (32.3)	5,478 (8.2)	917 (8.6)	606 (8.8)	842 (11.7)
1,037 - 1,037	12,513 (5.6)	4,473 (3.4)		488 (68.0)	2,304 (2.4)	428 (2.9)	273 (3.1)	980 (8.1)	8,040 (8.7)		89 (32.3)	5,586 (8.3)	917 (8.6)	606 (8.8)	842 (11.7)
1,038 - 1,038	12,728 (5.7)	4,487 (3.4)		488 (68.0)	2,315 (2.4)	428 (2.9)	273 (3.1)	983 (8.1)	8,241 (8.9)		92 (33.4)	5,731 (8.5)	970 (9.1)	606 (8.8)	842 (11.7)
1,039 - 1,039	12,795 (5.7)	4,551 (3.5)		488 (68.0)	2,376 (2.5)	428 (2.9)	277 (3.1)	983 (8.1)	8,244 (8.9)		92 (33.4)	5,734 (8.6)	970 (9.1)	606 (8.8)	842 (11.7)
1,040 - 1,040	13,197 (5.9)	4,564 (3.5)		488 (68.0)	2,388 (2.5)	428 (2.9)	277 (3.1)	983 (8.1)	8,634 (9.4)		92 (33.4)	5,960 (8.9)	1,134 (10.6)	606 (8.8)	842 (11.7)
1,041 - 1,041	13,534 (6.1)	4,719 (3.6)		542 (75.5)	2,396 (2.5)	430 (2.9)	277 (3.1)	1,075 (8.8)	8,814 (9.6)		92 (33.4)	5,962 (8.9)	1,134 (10.6)	781 (11.3)	846 (11.8)
1,042 - 1,042	13,539 (6.1)	4,721 (3.6)		542 (75.5)	2,397 (2.5)	430 (2.9)	277 (3.1)	1,075 (8.8)	8,818 (9.6)		92 (33.4)	5,965 (8.9)	1,134 (10.6)	781 (11.3)	846 (11.8)
1,043 - 1,043	13,688 (6.1)	4,780 (3.6)		542 (75.5)	2,456 (2.6)	430 (2.9)	277 (3.1)	1,075 (8.8)	8,909 (9.7)		94 (34.3)	6,054 (9.0)	1,134 (10.6)	781 (11.3)	846 (11.8)
1,044 - 1,044	13,692 (6.1)	4,780 (3.6)		542 (75.5)	2,456 (2.6)	430 (2.9)	277 (3.1)	1,075 (8.8)	8,912 (9.7)		94 (34.3)	6,057 (9.0)	1,134 (10.6)	781 (11.3)	846 (11.8)
1,045 - 1,045	13,800 (6.2)	4,781 (3.6)		542 (75.5)	2,456 (2.6)	432 (2.9)	277 (3.1)	1,075 (8.8)	9,018 (9.8)		94 (34.3)	6,156 (9.2)	1,138 (10.6)	785 (11.3)	846 (11.8)
1,046 - 1,046	13,831 (6.2)	4,797 (3.6)		542 (75.5)	2,472 (2.6)	432 (2.9)	277 (3.1)	1,075 (8.8)	9,033 (9.8)		94 (34.3)	6,170 (9.2)	1,138 (10.6)	786 (11.4)	846 (11.8)
1,047 - 1,047	13,839 (6.2)	4,806 (3.7)		542 (75.5)	2,481 (2.6)	432 (2.9)	277 (3.1)	1,075 (8.8)	9,033 (9.8)		94 (34.3)	6,170 (9.2)	1,138 (10.6)	786 (11.4)	846 (11.8)
1,048 - 1,048	13,898 (6.2)	4,806 (3.7)		542 (75.5)	2,481 (2.6)	432 (2.9)	277 (3.1)	1,075 (8.8)	9,092 (9.9)		94 (34.3)	6,170 (9.2)	1,138 (10.6)	845 (12.2)	846 (11.8)
1,049 - 1,049	14,056 (6.3)	4,811 (3.7)		542 (75.5)	2,486 (2.6)	432 (2.9)	277 (3.1)	1,075 (8.8)	9,244 (10.0)		94 (34.3)	6,267 (9.3)	1,138 (10.6)	845 (12.2)	900 (12.5)
1,050 - 1,050	15,922 (7.1)	5,626 (4.3)		542 (75.5)	3,100 (3.3)	433 (2.9)	332 (3.7)	1,218 (10.0)	10,296 (11.2)		94 (34.3)	6,750 (10.1)	1,238 (11.6)	1,003 (14.5)	1,211 (16.9)
1,051 - 1,051	15,986 (7.1)	5,631 (4.3)		542 (75.5)	3,104 (3.3)	435 (2.9)	332 (3.7)	1,218 (10.0)	10,355 (11.2)		94 (34.3)	6,752 (10.1)	1,294 (12.1)	1,004 (14.5)	1,211 (16.9)
1,052 - 1,052	15,989 (7.1)	5,634 (4.3)		542 (75.5)	3,107 (3.3)	435 (2.9)	332 (3.7)	1,218 (10.0)	10,355 (11.2)		94 (34.3)	6,752 (10.1)	1,294 (12.1)	1,004 (14.5)	1,211 (16.9)
1,053 - 1,053	15,994 (7.2)	5,639 (4.3)		542 (75.5)	3,110 (3.3)	435 (2.9)	334 (3.8)	1,218 (10.0)	10,355 (11.2)		94 (34.3)	6,752 (10.1)	1,294 (12.1)	1,004 (14.5)	1,211 (16.9)
1,054 - 1,054	15,998 (7.2)	5,639 (4.3)		542 (75.5)	3,110 (3.3)	435 (2.9)	334 (3.8)	1,218 (10.0)	10,359 (11.2)		94 (34.3)	6,756 (10.1)	1,294 (12.1)	1,004 (14.5)	1,211 (16.9)
1,055 - 1,055	16,015 (7.2)	5,648 (4.3)		542 (75.5)	3,115 (3.3)	435 (2.9)	338 (3.8)	1,218 (10.0)	10,368 (11.3)		94 (34.3)	6,758 (10.1)	1,297 (12.1)	1,007 (14.6)	1,211 (16.9)

総括表(2) (産業・就業形態別の賃金額階級別、性別年齢別表)

06年 総括表(2) (一般労働者)

時間当り所定内賃金額 (3手当を除く)	合計	男(歳)							女(歳)						
		男性計	17以下	18~19	20~54	55~59	60~64	65以上	女性計	17以下	18~19	20~54	55~59	60~64	65以上
1,056 - 1,056	16,191 (7.2)	5,713 (4.3)		542 (75.5)	3,180 (3.4)	435 (2.9)	338 (3.8)	1,218 (10.0)	10,478 (11.4)		94 (34.3)	6,865 (10.2)	1,300 (12.1)	1,007 (14.6)	1,211 (16.9)
1,057 - 1,057	16,343 (7.3)	5,720 (4.3)		542 (75.5)	3,187 (3.4)	435 (2.9)	338 (3.8)	1,218 (10.0)	10,624 (11.5)		94 (34.3)	7,007 (10.5)	1,304 (12.2)	1,007 (14.6)	1,211 (16.9)
1,058 - 1,058	16,355 (7.3)	5,731 (4.4)		542 (75.5)	3,198 (3.4)	435 (2.9)	338 (3.8)	1,218 (10.0)	10,624 (11.5)		94 (34.3)	7,007 (10.5)	1,304 (12.2)	1,007 (14.6)	1,211 (16.9)
1,059 - 1,059	16,615 (7.4)	5,827 (4.4)		545 (75.9)	3,278 (3.5)	435 (2.9)	341 (3.8)	1,228 (10.1)	10,788 (11.7)		94 (34.3)	7,059 (10.5)	1,373 (12.8)	1,049 (15.2)	1,211 (16.9)
1,060 - 1,060	16,981 (7.6)	5,907 (4.5)		545 (75.9)	3,285 (3.5)	435 (2.9)	345 (3.9)	1,297 (10.7)	11,074 (12.0)		94 (34.3)	7,195 (10.7)	1,416 (13.2)	1,049 (15.2)	1,320 (18.4)
1,061 - 1,061	17,190 (7.7)	5,965 (4.5)		545 (75.9)	3,342 (3.5)	435 (2.9)	345 (3.9)	1,297 (10.7)	11,225 (12.2)		94 (34.3)	7,239 (10.8)	1,468 (13.7)	1,104 (16.0)	1,320 (18.4)
1,062 - 1,062	17,204 (7.7)	5,968 (4.5)		545 (75.9)	3,346 (3.5)	435 (2.9)	345 (3.9)	1,297 (10.7)	11,236 (12.2)		94 (34.3)	7,248 (10.8)	1,470 (13.7)	1,104 (16.0)	1,320 (18.4)
1,063 - 1,063	17,297 (7.7)	5,968 (4.5)		545 (75.9)	3,346 (3.5)	435 (2.9)	345 (3.9)	1,297 (10.7)	11,329 (12.3)		94 (34.3)	7,248 (10.8)	1,563 (14.6)	1,104 (16.0)	1,320 (18.4)
1,064 - 1,064	17,541 (7.8)	6,084 (4.6)		545 (75.9)	3,462 (3.7)	435 (2.9)	345 (3.9)	1,297 (10.7)	11,456 (12.4)		94 (34.3)	7,255 (10.8)	1,618 (15.1)	1,169 (16.9)	1,320 (18.4)
1,065 - 1,065	17,620 (7.9)	6,154 (4.7)		545 (75.9)	3,532 (3.7)	435 (2.9)	345 (3.9)	1,297 (10.7)	11,467 (12.4)		94 (34.3)	7,262 (10.8)	1,618 (15.1)	1,172 (17.0)	1,320 (18.4)
1,066 - 1,066	17,991 (8.0)	6,304 (4.8)		545 (75.9)	3,537 (3.7)	435 (2.9)	345 (3.9)	1,442 (11.9)	11,688 (12.7)		159 (58.0)	7,262 (10.8)	1,685 (15.7)	1,261 (18.2)	1,320 (18.4)
1,067 - 1,067	18,064 (8.1)	6,321 (4.8)		545 (75.9)	3,553 (3.7)	435 (2.9)	345 (3.9)	1,442 (11.9)	11,744 (12.7)		159 (58.0)	7,315 (10.9)	1,689 (15.8)	1,261 (18.2)	1,320 (18.4)
1,068 - 1,068	18,166 (8.1)	6,380 (4.9)		545 (75.9)	3,559 (3.8)	435 (2.9)	345 (3.9)	1,497 (12.3)	11,786 (12.8)		159 (58.0)	7,315 (10.9)	1,731 (16.2)	1,261 (18.2)	1,320 (18.4)
1,069 - 1,069	18,373 (8.2)	6,385 (4.9)		545 (75.9)	3,559 (3.8)	440 (2.9)	345 (3.9)	1,497 (12.3)	11,988 (13.0)		159 (58.0)	7,458 (11.1)	1,790 (16.7)	1,261 (18.2)	1,320 (18.4)
1,070 - 1,070	18,734 (8.4)	6,549 (5.0)		599 (83.4)	3,662 (3.9)	444 (3.0)	347 (3.9)	1,497 (12.3)	12,185 (13.2)		159 (58.0)	7,652 (11.4)	1,794 (16.8)	1,261 (18.2)	1,320 (18.4)
1,071 - 1,071	19,487 (8.7)	6,876 (5.2)		599 (83.4)	3,925 (4.1)	509 (3.4)	347 (3.9)	1,497 (12.3)	12,611 (13.7)		159 (58.0)	7,953 (11.9)	1,794 (16.8)	1,261 (18.2)	1,444 (20.1)
1,072 - 1,072	19,681 (8.8)	6,975 (5.3)		599 (83.4)	3,935 (4.1)	509 (3.4)	436 (4.9)	1,497 (12.3)	12,706 (13.8)		159 (58.0)	8,049 (12.0)	1,794 (16.8)	1,261 (18.2)	1,444 (20.1)
1,073 - 1,073	19,697 (8.8)	6,986 (5.3)		599 (83.4)	3,946 (4.2)	509 (3.4)	436 (4.9)	1,497 (12.3)	12,711 (13.8)		159 (58.0)	8,054 (12.0)	1,794 (16.8)	1,261 (18.2)	1,444 (20.1)
1,074 - 1,074	19,869 (8.9)	7,101 (5.4)		599 (83.4)	4,060 (4.3)	509 (3.4)	436 (4.9)	1,497 (12.3)	12,769 (13.9)		159 (58.0)	8,110 (12.1)	1,794 (16.8)	1,263 (18.3)	1,444 (20.1)
1,075 - 1,075	20,007 (8.9)	7,224 (5.5)		600 (83.6)	4,179 (4.4)	509 (3.4)	436 (4.9)	1,500 (12.3)	12,782 (13.9)		159 (58.0)	8,113 (12.1)	1,794 (16.8)	1,273 (18.4)	1,444 (20.1)
1,076 - 1,076	20,056 (9.0)	7,224 (5.5)		600 (83.6)	4,179 (4.4)	509 (3.4)	436 (4.9)	1,500 (12.3)	12,832 (13.9)		159 (58.0)	8,113 (12.1)	1,843 (17.2)	1,273 (18.4)	1,444 (20.1)
1,077 - 1,077	20,150 (9.0)	7,231 (5.5)		600 (83.6)	4,186 (4.4)	509 (3.4)	436 (4.9)	1,500 (12.3)	12,919 (14.0)		159 (58.0)	8,158 (12.2)	1,843 (17.2)	1,315 (19.0)	1,444 (20.1)
1,078 - 1,078	20,380 (9.1)	7,307 (5.6)		603 (83.9)	4,250 (4.5)	509 (3.4)	436 (4.9)	1,510 (12.4)	13,073 (14.2)		159 (58.0)	8,312 (12.4)	1,843 (17.2)	1,315 (19.0)	1,444 (20.1)
1,079 - 1,079	20,767 (9.3)	7,387 (5.6)		603 (83.9)	4,325 (4.6)	509 (3.4)	440 (5.0)	1,510 (12.4)	13,380 (14.5)		159 (58.0)	8,577 (12.8)	1,843 (17.2)	1,357 (19.6)	1,444 (20.1)
1,080 - 1,080	21,276 (9.5)	7,711 (5.9)		603 (83.9)	4,541 (4.8)	509 (3.4)	548 (6.2)	1,510 (12.4)	13,564 (14.7)		159 (58.0)	8,666 (12.9)	1,843 (17.2)	1,452 (21.0)	1,444 (20.1)
1,081 - 1,081	21,379 (9.6)	7,724 (5.9)		607 (84.5)	4,546 (4.8)	512 (3.4)	548 (6.2)	1,510 (12.4)	13,655 (14.8)		159 (58.0)	8,666 (12.9)	1,843 (17.2)	1,543 (22.3)	1,444 (20.1)
1,082 - 1,082	21,527 (9.6)	7,826 (6.0)		607 (84.5)	4,648 (4.9)	512 (3.4)	548 (6.2)	1,510 (12.4)	13,701 (14.9)		159 (58.0)	8,713 (13.0)	1,843 (17.2)	1,543 (22.3)	1,444 (20.1)
1,083 - 1,083	21,744 (9.7)	7,836 (6.0)		607 (84.5)	4,654 (4.9)	512 (3.4)	552 (6.2)	1,510 (12.4)	13,907 (15.1)		159 (58.0)	8,716 (13.0)	1,911 (17.9)	1,678 (24.3)	1,444 (20.1)
1,084 - 1,084	21,806 (9.8)	7,899 (6.0)		607 (84.5)	4,717 (5.0)	512 (3.4)	552 (6.2)	1,510 (12.4)	13,907 (15.1)		159 (58.0)	8,716 (13.0)	1,911 (17.9)	1,678 (24.3)	1,444 (20.1)
1,085 - 1,085	22,086 (9.9)	7,981 (6.1)		607 (84.5)	4,733 (5.0)	512 (3.4)	554 (6.3)	1,575 (13.0)	14,105 (15.3)		159 (58.0)	8,913 (13.3)	1,911 (17.9)	1,678 (24.3)	1,444 (20.1)

総括表(2) (産業・就業形態別の賃金額階級別、性別年齢別表)

06年 総括表(2) (一般労働者)

時間当り所定内賃金額 (3手当を除く)	合計	男(歳)							女(歳)						
		男性計	17以下	18~19	20~54	55~59	60~64	65以上	女性計	17以下	18~19	20~54	55~59	60~64	65以上
1,086 - 1,086	22,450 (10.0)	8,254 (6.3)		607 (84.5)	4,950 (5.2)	566 (3.8)	556 (6.3)	1,575 (13.0)	14,196 (15.4)		159 (58.0)	9,005 (13.4)	1,911 (17.9)	1,678 (24.3)	1,444 (20.1)
1,087 - 1,087	22,617 (10.1)	8,308 (6.3)		607 (84.5)	5,004 (5.3)	566 (3.8)	556 (6.3)	1,575 (13.0)	14,309 (15.5)		159 (58.0)	9,118 (13.6)	1,911 (17.9)	1,678 (24.3)	1,444 (20.1)
1,088 - 1,088	22,774 (10.2)	8,465 (6.4)		607 (84.5)	5,105 (5.4)	568 (3.8)	609 (6.9)	1,575 (13.0)	14,309 (15.5)		159 (58.0)	9,118 (13.6)	1,911 (17.9)	1,678 (24.3)	1,444 (20.1)
1,089 - 1,089	22,875 (10.2)	8,471 (6.4)		607 (84.5)	5,111 (5.4)	568 (3.8)	609 (6.9)	1,575 (13.0)	14,404 (15.6)		159 (58.0)	9,170 (13.7)	1,911 (17.9)	1,720 (24.9)	1,444 (20.1)
1,090 - 1,090	23,298 (10.4)	8,709 (6.6)		607 (84.5)	5,290 (5.6)	568 (3.8)	609 (6.9)	1,634 (13.4)	14,589 (15.8)		159 (58.0)	9,302 (13.9)	1,911 (17.9)	1,774 (25.7)	1,444 (20.1)
1,091 - 1,091	23,493 (10.5)	8,767 (6.7)		607 (84.5)	5,349 (5.6)	568 (3.8)	609 (6.9)	1,634 (13.4)	14,726 (16.0)		159 (58.0)	9,439 (14.1)	1,911 (17.9)	1,774 (25.7)	1,444 (20.1)
1,092 - 1,092	23,638 (10.6)	8,825 (6.7)		607 (84.5)	5,406 (5.7)	568 (3.8)	609 (6.9)	1,634 (13.4)	14,813 (16.1)		159 (58.0)	9,483 (14.1)	1,911 (17.9)	1,816 (26.3)	1,444 (20.1)
1,093 - 1,093	24,100 (10.8)	9,066 (6.9)		607 (84.5)	5,583 (5.9)	568 (3.8)	609 (6.9)	1,699 (14.0)	15,034 (16.3)		159 (58.0)	9,596 (14.3)	1,965 (18.4)	1,871 (27.1)	1,444 (20.1)
1,094 - 1,094	24,164 (10.8)	9,076 (6.9)		607 (84.5)	5,589 (5.9)	568 (3.8)	609 (6.9)	1,702 (14.0)	15,089 (16.4)		159 (58.0)	9,598 (14.3)	1,965 (18.4)	1,871 (27.1)	1,496 (20.8)
1,095 - 1,095	24,288 (10.9)	9,141 (7.0)		607 (84.5)	5,600 (5.9)	568 (3.8)	663 (7.5)	1,702 (14.0)	15,148 (16.4)		159 (58.0)	9,602 (14.3)	2,019 (18.9)	1,871 (27.1)	1,496 (20.8)
1,096 - 1,096	24,303 (10.9)	9,150 (7.0)		607 (84.5)	5,609 (5.9)	568 (3.8)	663 (7.5)	1,702 (14.0)	15,154 (16.5)		159 (58.0)	9,608 (14.3)	2,019 (18.9)	1,871 (27.1)	1,496 (20.8)
1,097 - 1,097	24,425 (10.9)	9,151 (7.0)		607 (84.5)	5,611 (5.9)	568 (3.8)	663 (7.5)	1,702 (14.0)	15,274 (16.6)		159 (58.0)	9,661 (14.4)	2,087 (19.5)	1,871 (27.1)	1,496 (20.8)
1,098 - 1,098	24,553 (11.0)	9,214 (7.0)		607 (84.5)	5,674 (6.0)	568 (3.8)	663 (7.5)	1,702 (14.0)	15,339 (16.7)		159 (58.0)	9,661 (14.4)	2,087 (19.5)	1,936 (28.0)	1,496 (20.8)
1,099 - 1,099	24,602 (11.0)	9,221 (7.0)		607 (84.5)	5,681 (6.0)	568 (3.8)	663 (7.5)	1,702 (14.0)	15,381 (16.7)		159 (58.0)	9,661 (14.4)	2,129 (19.9)	1,936 (28.0)	1,496 (20.8)
1,100 - 1,100	26,123 (11.7)	10,106 (7.7)		607 (84.5)	6,428 (6.8)	571 (3.8)	680 (7.7)	1,820 (15.0)	16,016 (17.4)		159 (58.0)	10,134 (15.1)	2,218 (20.7)	1,937 (28.0)	1,569 (21.8)
1,101 - 1,101	26,436 (11.8)	10,272 (7.8)		607 (84.5)	6,486 (6.8)	620 (4.2)	738 (8.3)	1,820 (15.0)	16,164 (17.5)		159 (58.0)	10,281 (15.3)	2,218 (20.7)	1,937 (28.0)	1,569 (21.8)
1,102 - 1,102	26,571 (11.9)	10,341 (7.9)		607 (84.5)	6,493 (6.8)	624 (4.2)	740 (8.3)	1,878 (15.4)	16,230 (17.6)		159 (58.0)	10,344 (15.4)	2,221 (20.8)	1,937 (28.0)	1,569 (21.8)
1,103 - 1,103	26,758 (12.0)	10,381 (7.9)		613 (85.3)	6,527 (6.9)	624 (4.2)	740 (8.3)	1,878 (15.4)	16,377 (17.8)		159 (58.0)	10,479 (15.6)	2,232 (20.8)	1,939 (28.0)	1,569 (21.8)
1,104 - 1,104	26,819 (12.0)	10,438 (7.9)		613 (85.3)	6,584 (6.9)	624 (4.2)	740 (8.3)	1,878 (15.4)	16,381 (17.8)		159 (58.0)	10,483 (15.6)	2,232 (20.8)	1,939 (28.0)	1,569 (21.8)
1,105 - 1,105	26,943 (12.0)	10,441 (7.9)		613 (85.3)	6,588 (6.9)	624 (4.2)	740 (8.3)	1,878 (15.4)	16,502 (17.9)		159 (58.0)	10,561 (15.8)	2,274 (21.2)	1,939 (28.0)	1,569 (21.8)
1,106 - 1,106	27,039 (12.1)	10,446 (7.9)		613 (85.3)	6,592 (7.0)	624 (4.2)	740 (8.3)	1,878 (15.4)	16,593 (18.0)		159 (58.0)	10,650 (15.9)	2,274 (21.2)	1,942 (28.1)	1,569 (21.8)
1,107 - 1,107	27,411 (12.3)	10,582 (8.0)		616 (85.8)	6,657 (7.0)	624 (4.2)	807 (9.1)	1,878 (15.4)	16,830 (18.3)		159 (58.0)	10,886 (16.2)	2,274 (21.2)	1,942 (28.1)	1,569 (21.8)
1,108 - 1,108	27,711 (12.4)	10,648 (8.1)		616 (85.8)	6,723 (7.1)	624 (4.2)	807 (9.1)	1,878 (15.4)	17,063 (18.5)		159 (58.0)	10,987 (16.4)	2,274 (21.2)	1,942 (28.1)	1,701 (23.7)
1,109 - 1,109	27,717 (12.4)	10,651 (8.1)		616 (85.8)	6,726 (7.1)	624 (4.2)	807 (9.1)	1,878 (15.4)	17,067 (18.5)		159 (58.0)	10,991 (16.4)	2,274 (21.2)	1,942 (28.1)	1,701 (23.7)
1,110 - 1,110	30,370 (13.6)	12,291 (9.3)		620 (86.4)	7,433 (7.8)	726 (4.9)	861 (9.7)	2,651 (21.8)	18,079 (19.6)		159 (58.0)	11,700 (17.5)	2,393 (22.4)	1,960 (28.3)	1,868 (26.0)
1,120 - 1,120	32,164 (14.4)	12,823 (9.8)		679 (94.6)	7,744 (8.2)	730 (4.9)	870 (9.8)	2,799 (23.0)	19,341 (21.0)		159 (58.0)	12,546 (18.7)	2,571 (24.0)	2,075 (30.0)	1,990 (27.7)
1,130 - 1,130	34,543 (15.4)	13,775 (10.5)		685 (95.4)	8,451 (8.9)	823 (5.5)	1,012 (11.4)	2,803 (23.1)	20,768 (22.5)		159 (58.0)	13,579 (20.3)	2,808 (26.2)	2,121 (30.7)	2,101 (29.2)
1,140 - 1,140	36,483 (16.3)	14,659 (11.1)		685 (95.4)	9,023 (9.5)	1,066 (7.1)	1,019 (11.5)	2,865 (23.6)	21,824 (23.7)		166 (60.5)	14,455 (21.6)	2,919 (27.3)	2,183 (31.6)	2,101 (29.2)
1,150 - 1,150	39,579 (17.7)	15,604 (11.9)		688 (95.8)	9,739 (10.3)	1,134 (7.6)	1,104 (12.5)	2,939 (24.2)	23,975 (26.0)		178 (64.9)	16,001 (23.9)	3,235 (30.2)	2,305 (33.3)	2,257 (31.4)
1,160 - 1,160	41,767 (18.7)	16,636 (12.6)		691 (96.2)	10,638 (11.2)	1,200 (8.0)	1,157 (13.1)	2,950 (24.3)	25,131 (27.3)		178 (64.9)	16,697 (24.9)	3,473 (32.4)	2,527 (36.5)	2,257 (31.4)

総括表(2) (産業・就業形態別の賃金額階級別、性別年齢別表)

06年 総括表(2) (一般労働者)

時間当り所定内賃金額 (3手当を除く)	合計	男(歳)							女(歳)							
		男性計	17以下	18~19	20~54	55~59	60~64	65以上	女性計	17以下	18~19	20~54	55~59	60~64	65以上	
1,170 - 1,179	42,995 (19.2)	17,236 (13.1)		691 (96.2)	11,124 (11.7)	1,259 (8.4)	1,160 (13.1)	3,002 (24.7)	25,759 (28.0)			267 (97.5)	17,033 (25.4)	3,576 (33.4)	2,626 (38.0)	2,257 (31.4)
1,180 - 1,189	44,234 (19.8)	17,521 (13.3)		691 (96.2)	11,288 (11.9)	1,260 (8.4)	1,213 (13.7)	3,069 (25.3)	26,712 (29.0)			267 (97.5)	17,815 (26.6)	3,682 (34.4)	2,682 (38.8)	2,267 (31.6)
1,190 - 1,199	46,037 (20.6)	18,412 (14.0)		698 (97.2)	11,768 (12.4)	1,427 (9.6)	1,379 (15.6)	3,139 (25.8)	27,625 (30.0)			267 (97.5)	18,502 (27.6)	3,747 (35.0)	2,724 (39.4)	2,385 (33.2)
1,200 - 1,299	67,705 (30.3)	30,257 (23.0)		717 (99.8)	20,198 (21.3)	2,289 (15.3)	2,356 (26.6)	4,697 (38.6)	37,449 (40.7)			274 (100.0)	25,402 (37.9)	4,589 (42.9)	3,467 (50.1)	3,717 (51.7)
1,300 - 1,399	88,742 (39.7)	40,164 (30.5)	1 (100.0)	718 (100.0)	27,783 (29.3)	2,800 (18.7)	3,283 (37.1)	5,579 (45.9)	48,578 (52.7)				34,398 (51.3)	5,548 (51.8)	3,941 (57.0)	4,416 (61.5)
1,400 - 1,499	108,254 (48.4)	51,097 (38.9)			35,808 (37.8)	3,677 (24.6)	4,317 (48.7)	6,576 (54.1)	57,158 (62.1)				41,835 (62.4)	6,185 (57.8)	4,304 (62.3)	4,559 (63.5)
1,500 - 1,599	127,132 (56.8)	61,760 (47.0)			43,300 (45.7)	5,060 (33.9)	5,010 (56.5)	7,670 (63.1)	65,372 (71.0)				47,624 (71.0)	6,734 (62.9)	5,031 (72.8)	5,709 (79.5)
1,600 - 1,699	142,693 (63.8)	71,687 (54.5)			51,059 (53.8)	6,057 (40.5)	5,410 (61.0)	8,441 (69.5)	71,006 (77.1)				51,807 (77.3)	7,690 (71.8)	5,371 (77.7)	5,864 (81.6)
1,700 - 1,799	156,281 (69.9)	80,833 (61.5)			58,584 (61.8)	7,065 (47.3)	5,678 (64.1)	8,787 (72.3)	75,448 (81.9)				55,505 (82.8)	8,071 (75.4)	5,624 (81.3)	5,974 (83.2)
1,800 - 1,899	165,213 (73.9)	86,372 (65.7)			62,978 (66.4)	7,397 (49.5)	6,131 (69.2)	9,146 (75.3)	78,841 (85.6)				58,071 (86.6)	8,450 (79.0)	5,922 (85.7)	6,124 (85.3)
1,900 - 1,999	175,204 (78.3)	93,848 (71.4)			68,826 (72.6)	8,324 (55.7)	6,373 (71.9)	9,605 (79.0)	81,356 (88.3)				59,968 (89.4)	8,796 (82.2)	6,063 (87.7)	6,255 (87.1)
2,000 -	223,629 (100.0)	131,514 (100.0)			94,841 (100.0)	14,939 (100.0)	8,861 (100.0)	12,153 (100.0)	92,115 (100.0)				67,041 (100.0)	10,703 (100.0)	6,913 (100.0)	7,183 (100.0)
月平均賃金額	268,862	297,758	239,940	123,176	296,213	346,339	293,611	263,438	227,606			150,105	234,448	239,915	207,846	167,389
時間当り平均賃金額	1,674	1,800	1,333	1,040	1,776	2,078	1,779	1,709	1,494			1,101	1,488	1,555	1,439	1,525
月一人当たり労働時間数	161	166	180	117	168	168	167	157	153			134	158	154	143	115
第1・20分位数	1,030	1,071	1,333	985	1,086	1,134	1,080	1,028	1,010			1,030	1,010	1,018	1,010	1,008
第1・10分位数	1,086	1,132	1,333	1,003	1,156	1,200	1,130	1,050	1,049			1,030	1,050	1,040	1,041	1,029
第1・4分位数	1,244	1,320	1,333	1,010	1,335	1,505	1,265	1,187	1,155			1,030	1,170	1,135	1,090	1,111
中位数	1,508	1,641	1,333	1,010	1,654	1,906	1,504	1,439	1,372			1,066	1,386	1,391	1,290	1,298
四分位偏差係数	0.2228	0.2325		0.0153	0.2146	0.2610	0.2729	0.2356	0.1840			0.0689	0.1760	0.2380	0.2252	0.1498

総括表(2)(産業・就業形態別の賃金額階級別、性別年齢別表)

06年 総括表(2)(パート労働者)

時間当り所定内賃金額 (3手当を除く)	合計	男(歳)							女(歳)						
		男性計	17以下	18~19	20~54	55~59	60~64	65以上	女性計	17以下	18~19	20~54	55~59	60~64	65以上
1,026 - 1,026	53,048 (30.7)	16,331 (34.9)	827 (59.2)	2,332 (50.6)	9,644 (37.4)	379 (24.4)	837 (24.5)	2,312 (22.9)	36,717 (29.1)	1,266 (61.2)	3,065 (42.1)	18,346 (25.4)	3,298 (25.1)	3,883 (30.0)	6,859 (36.9)
1,027 - 1,027	53,147 (30.7)	16,335 (34.9)	827 (59.2)	2,332 (50.6)	9,644 (37.4)	379 (24.4)	837 (24.5)	2,317 (22.9)	36,811 (29.2)	1,266 (61.2)	3,065 (42.1)	18,437 (25.5)	3,298 (25.1)	3,883 (30.0)	6,862 (36.9)
1,028 - 1,028	53,254 (30.8)	16,338 (34.9)	827 (59.2)	2,332 (50.6)	9,644 (37.4)	379 (24.4)	837 (24.5)	2,320 (23.0)	36,915 (29.3)	1,266 (61.2)	3,154 (43.4)	18,443 (25.6)	3,308 (25.2)	3,883 (30.0)	6,862 (36.9)
1,029 - 1,029	53,705 (31.0)	16,451 (35.1)	827 (59.2)	2,332 (50.6)	9,644 (37.4)	492 (31.7)	837 (24.5)	2,320 (23.0)	37,254 (29.5)	1,266 (61.2)	3,154 (43.4)	18,781 (26.0)	3,308 (25.2)	3,883 (30.0)	6,862 (36.9)
1,030 - 1,030	58,080 (33.6)	17,597 (37.6)	1,190 (85.1)	2,420 (52.5)	10,074 (39.1)	492 (31.7)	905 (26.5)	2,516 (24.9)	40,484 (32.1)	1,443 (69.8)	3,331 (45.8)	20,636 (28.6)	3,746 (28.5)	4,245 (32.8)	7,082 (38.1)
1,031 - 1,031	58,177 (33.6)	17,598 (37.6)	1,190 (85.1)	2,420 (52.5)	10,074 (39.1)	492 (31.7)	905 (26.5)	2,517 (24.9)	40,579 (32.2)	1,443 (69.8)	3,331 (45.8)	20,640 (28.6)	3,746 (28.5)	4,336 (33.5)	7,082 (38.1)
1,032 - 1,032	58,190 (33.6)	17,601 (37.6)	1,190 (85.1)	2,420 (52.5)	10,074 (39.1)	492 (31.7)	905 (26.5)	2,520 (25.0)	40,589 (32.2)	1,443 (69.8)	3,331 (45.8)	20,640 (28.6)	3,756 (28.6)	4,336 (33.5)	7,082 (38.1)
1,033 - 1,033	58,381 (33.7)	17,694 (37.8)	1,190 (85.1)	2,420 (52.5)	10,166 (39.4)	492 (31.7)	905 (26.5)	2,522 (25.0)	40,687 (32.2)	1,443 (69.8)	3,331 (45.8)	20,733 (28.7)	3,761 (28.6)	4,336 (33.5)	7,082 (38.1)
1,034 - 1,034	58,381 (33.7)	17,694 (37.8)	1,190 (85.1)	2,420 (52.5)	10,166 (39.4)	492 (31.7)	905 (26.5)	2,522 (25.0)	40,687 (32.2)	1,443 (69.8)	3,331 (45.8)	20,733 (28.7)	3,761 (28.6)	4,336 (33.5)	7,082 (38.1)
1,035 - 1,035	58,551 (33.8)	17,763 (37.9)	1,190 (85.1)	2,420 (52.5)	10,166 (39.4)	492 (31.7)	974 (28.5)	2,522 (25.0)	40,788 (32.3)	1,443 (69.8)	3,331 (45.8)	20,733 (28.7)	3,771 (28.7)	4,336 (33.5)	7,173 (38.6)
1,036 - 1,036	58,613 (33.9)	17,821 (38.0)	1,190 (85.1)	2,420 (52.5)	10,166 (39.4)	492 (31.7)	978 (28.6)	2,576 (25.5)	40,792 (32.3)	1,443 (69.8)	3,331 (45.8)	20,737 (28.7)	3,771 (28.7)	4,336 (33.5)	7,173 (38.6)
1,037 - 1,037	58,767 (34.0)	17,821 (38.0)	1,190 (85.1)	2,420 (52.5)	10,166 (39.4)	492 (31.7)	978 (28.6)	2,576 (25.5)	40,945 (32.4)	1,443 (69.8)	3,419 (47.0)	20,737 (28.7)	3,836 (29.2)	4,336 (33.5)	7,173 (38.6)
1,038 - 1,038	59,265 (34.2)	17,930 (38.3)	1,190 (85.1)	2,420 (52.5)	10,275 (39.9)	492 (31.7)	978 (28.6)	2,576 (25.5)	41,335 (32.8)	1,443 (69.8)	3,419 (47.0)	20,954 (29.0)	3,901 (29.7)	4,444 (34.3)	7,173 (38.6)
1,039 - 1,039	59,265 (34.2)	17,930 (38.3)	1,190 (85.1)	2,420 (52.5)	10,275 (39.9)	492 (31.7)	978 (28.6)	2,576 (25.5)	41,335 (32.8)	1,443 (69.8)	3,419 (47.0)	20,954 (29.0)	3,901 (29.7)	4,444 (34.3)	7,173 (38.6)
1,040 - 1,040	62,933 (36.4)	18,337 (39.1)	1,281 (91.6)	2,420 (52.5)	10,525 (40.8)	492 (31.7)	978 (28.6)	2,642 (26.2)	44,596 (35.3)	1,443 (69.8)	3,508 (48.2)	22,295 (30.9)	4,430 (33.7)	5,196 (40.1)	7,724 (41.6)
1,041 - 1,041	62,988 (36.4)	18,337 (39.1)	1,281 (91.6)	2,420 (52.5)	10,525 (40.8)	492 (31.7)	978 (28.6)	2,642 (26.2)	44,651 (35.4)	1,443 (69.8)	3,508 (48.2)	22,295 (30.9)	4,484 (34.1)	5,196 (40.1)	7,726 (41.6)
1,042 - 1,042	62,998 (36.4)	18,337 (39.1)	1,281 (91.6)	2,420 (52.5)	10,525 (40.8)	492 (31.7)	978 (28.6)	2,642 (26.2)	44,661 (35.4)	1,443 (69.8)	3,508 (48.2)	22,295 (30.9)	4,494 (34.2)	5,196 (40.1)	7,726 (41.6)
1,043 - 1,043	63,091 (36.5)	18,337 (39.1)	1,281 (91.6)	2,420 (52.5)	10,525 (40.8)	492 (31.7)	978 (28.6)	2,642 (26.2)	44,754 (35.5)	1,443 (69.8)	3,597 (49.4)	22,295 (30.9)	4,498 (34.2)	5,196 (40.1)	7,726 (41.6)
1,044 - 1,044	63,273 (36.6)	18,337 (39.1)	1,281 (91.6)	2,420 (52.5)	10,525 (40.8)	492 (31.7)	978 (28.6)	2,642 (26.2)	44,936 (35.6)	1,443 (69.8)	3,597 (49.4)	22,386 (31.0)	4,498 (34.2)	5,287 (40.8)	7,726 (41.6)
1,045 - 1,045	63,492 (36.7)	18,337 (39.1)	1,281 (91.6)	2,420 (52.5)	10,525 (40.8)	492 (31.7)	978 (28.6)	2,642 (26.2)	45,154 (35.8)	1,443 (69.8)	3,597 (49.4)	22,604 (31.3)	4,498 (34.2)	5,287 (40.8)	7,726 (41.6)
1,046 - 1,046	63,542 (36.7)	18,337 (39.1)	1,281 (91.6)	2,420 (52.5)	10,525 (40.8)	492 (31.7)	978 (28.6)	2,642 (26.2)	45,205 (35.8)	1,443 (69.8)	3,597 (49.4)	22,655 (31.4)	4,498 (34.2)	5,287 (40.8)	7,726 (41.6)
1,047 - 1,047	63,550 (36.7)	18,337 (39.1)	1,281 (91.6)	2,420 (52.5)	10,525 (40.8)	492 (31.7)	978 (28.6)	2,642 (26.2)	45,213 (35.8)	1,443 (69.8)	3,597 (49.4)	22,663 (31.4)	4,498 (34.2)	5,287 (40.8)	7,726 (41.6)
1,048 - 1,048	63,558 (36.7)	18,345 (39.2)	1,281 (91.6)	2,420 (52.5)	10,533 (40.9)	492 (31.7)	978 (28.6)	2,642 (26.2)	45,213 (35.8)	1,443 (69.8)	3,597 (49.4)	22,663 (31.4)	4,498 (34.2)	5,287 (40.8)	7,726 (41.6)
1,049 - 1,049	63,650 (36.8)	18,345 (39.2)	1,281 (91.6)	2,420 (52.5)	10,533 (40.9)	492 (31.7)	978 (28.6)	2,642 (26.2)	45,304 (35.9)	1,443 (69.8)	3,597 (49.4)	22,663 (31.4)	4,498 (34.2)	5,287 (40.8)	7,817 (42.0)
1,050 - 1,050	76,808 (44.4)	22,653 (48.3)	1,396 (99.8)	3,456 (75.0)	12,995 (50.4)	502 (32.3)	1,050 (30.7)	3,254 (32.2)	54,155 (42.9)	1,550 (74.9)	4,481 (61.6)	28,321 (39.2)	5,424 (41.3)	5,764 (44.5)	8,615 (46.3)
1,051 - 1,051	76,850 (44.4)	22,695 (48.4)	1,396 (99.8)	3,456 (75.0)	12,995 (50.4)	502 (32.3)	1,050 (30.7)	3,296 (32.6)	54,155 (42.9)	1,550 (74.9)	4,481 (61.6)	28,321 (39.2)	5,424 (41.3)	5,764 (44.5)	8,615 (46.3)
1,052 - 1,052	76,853 (44.4)	22,695 (48.4)	1,396 (99.8)	3,456 (75.0)	12,995 (50.4)	502 (32.3)	1,050 (30.7)	3,296 (32.6)	54,158 (42.9)	1,550 (74.9)	4,481 (61.6)	28,321 (39.2)	5,427 (41.3)	5,764 (44.5)	8,615 (46.3)
1,053 - 1,053	76,908 (44.4)	22,698 (48.4)	1,396 (99.8)	3,456 (75.0)	12,995 (50.4)	502 (32.3)	1,053 (30.8)	3,296 (32.6)	54,211 (43.0)	1,550 (74.9)	4,481 (61.6)	28,321 (39.2)	5,437 (41.4)	5,764 (44.5)	8,657 (46.6)
1,054 - 1,054	76,918 (44.4)	22,698 (48.4)	1,396 (99.8)	3,456 (75.0)	12,995 (50.4)	502 (32.3)	1,053 (30.8)	3,296 (32.6)	54,221 (43.0)	1,550 (74.9)	4,481 (61.6)	28,331 (39.3)	5,437 (41.4)	5,764 (44.5)	8,657 (46.6)
1,055 - 1,055	77,108 (44.6)	22,763 (48.6)	1,396 (99.8)	3,456 (75.0)	12,995 (50.4)	502 (32.3)	1,053 (30.8)	3,361 (33.3)	54,345 (43.1)	1,550 (74.9)	4,481 (61.6)	28,456 (39.4)	5,437 (41.4)	5,764 (44.5)	8,657 (46.6)

総括表(2)(産業・就業形態別の賃金額階級別、性別年齢別表)

06年 総括表(2)(パート労働者)

時間当たり所定内賃金額 (3手当を除く)	合計	男(歳)							女(歳)						
		男性計	17以下	18~19	20~54	55~59	60~64	65以上	女性計	17以下	18~19	20~54	55~59	60~64	65以上
1,056 - 1,056	77,373 (44.7)	22,872 (48.8)	1,396 (99.8)	3,456 (75.0)	12,995 (50.4)	502 (32.3)	1,053 (30.8)	3,470 (34.4)	54,502 (43.2)	1,550 (74.9)	4,481 (61.6)	28,521 (39.5)	5,440 (41.4)	5,849 (45.1)	8,661 (46.6)
1,057 - 1,057	77,503 (44.8)	22,872 (48.8)	1,396 (99.8)	3,456 (75.0)	12,995 (50.4)	502 (32.3)	1,053 (30.8)	3,470 (34.4)	54,632 (43.3)	1,550 (74.9)	4,481 (61.6)	28,521 (39.5)	5,440 (41.4)	5,849 (45.1)	8,791 (47.3)
1,058 - 1,058	77,709 (44.9)	22,991 (49.1)	1,396 (99.8)	3,456 (75.0)	12,995 (50.4)	560 (36.1)	1,054 (30.9)	3,529 (34.9)	54,719 (43.4)	1,550 (74.9)	4,481 (61.6)	28,584 (39.6)	5,453 (41.5)	5,859 (45.2)	8,791 (47.3)
1,059 - 1,059	77,837 (45.0)	22,991 (49.1)	1,396 (99.8)	3,456 (75.0)	12,995 (50.4)	560 (36.1)	1,054 (30.9)	3,529 (34.9)	54,846 (43.5)	1,550 (74.9)	4,481 (61.6)	28,595 (39.6)	5,453 (41.5)	5,911 (45.6)	8,856 (47.6)
1,060 - 1,060	81,581 (47.1)	23,721 (50.6)	1,396 (99.8)	3,456 (75.0)	13,295 (51.6)	560 (36.1)	1,249 (36.6)	3,765 (37.3)	57,860 (45.8)	1,642 (79.4)	5,028 (69.1)	30,595 (42.4)	5,531 (42.1)	6,152 (47.5)	8,913 (47.9)
1,061 - 1,061	81,588 (47.1)	23,721 (50.6)	1,396 (99.8)	3,456 (75.0)	13,295 (51.6)	560 (36.1)	1,249 (36.6)	3,765 (37.3)	57,867 (45.9)	1,642 (79.4)	5,028 (69.1)	30,602 (42.4)	5,531 (42.1)	6,152 (47.5)	8,913 (47.9)
1,062 - 1,062	81,719 (47.2)	23,721 (50.6)	1,396 (99.8)	3,456 (75.0)	13,295 (51.6)	560 (36.1)	1,249 (36.6)	3,765 (37.3)	57,998 (46.0)	1,642 (79.4)	5,028 (69.1)	30,733 (42.6)	5,531 (42.1)	6,152 (47.5)	8,913 (47.9)
1,063 - 1,063	81,719 (47.2)	23,721 (50.6)	1,396 (99.8)	3,456 (75.0)	13,295 (51.6)	560 (36.1)	1,249 (36.6)	3,765 (37.3)	57,998 (46.0)	1,642 (79.4)	5,028 (69.1)	30,733 (42.6)	5,531 (42.1)	6,152 (47.5)	8,913 (47.9)
1,064 - 1,064	83,189 (48.1)	23,735 (50.7)	1,396 (99.8)	3,456 (75.0)	13,308 (51.6)	560 (36.1)	1,249 (36.6)	3,765 (37.3)	59,454 (47.1)	1,642 (79.4)	5,028 (69.1)	31,834 (44.1)	5,699 (43.4)	6,248 (48.2)	9,004 (48.4)
1,065 - 1,065	83,588 (48.3)	23,830 (50.9)	1,396 (99.8)	3,456 (75.0)	13,394 (52.0)	560 (36.1)	1,249 (36.6)	3,775 (37.4)	59,758 (47.4)	1,642 (79.4)	5,028 (69.1)	32,012 (44.4)	5,699 (43.4)	6,258 (48.3)	9,120 (49.1)
1,066 - 1,066	83,772 (48.4)	23,832 (50.9)	1,396 (99.8)	3,456 (75.0)	13,396 (52.0)	560 (36.1)	1,249 (36.6)	3,775 (37.4)	59,940 (47.5)	1,642 (79.4)	5,028 (69.1)	32,103 (44.5)	5,790 (44.1)	6,258 (48.3)	9,120 (49.1)
1,067 - 1,067	83,803 (48.4)	23,832 (50.9)	1,396 (99.8)	3,456 (75.0)	13,396 (52.0)	560 (36.1)	1,249 (36.6)	3,775 (37.4)	59,971 (47.5)	1,642 (79.4)	5,028 (69.1)	32,133 (44.5)	5,790 (44.1)	6,258 (48.3)	9,120 (49.1)
1,068 - 1,068	83,931 (48.5)	23,905 (51.0)	1,396 (99.8)	3,456 (75.0)	13,399 (52.0)	560 (36.1)	1,249 (36.6)	3,845 (38.1)	60,026 (47.6)	1,642 (79.4)	5,028 (69.1)	32,186 (44.6)	5,790 (44.1)	6,261 (48.3)	9,120 (49.1)
1,069 - 1,069	83,931 (48.5)	23,905 (51.0)	1,396 (99.8)	3,456 (75.0)	13,399 (52.0)	560 (36.1)	1,249 (36.6)	3,845 (38.1)	60,026 (47.6)	1,642 (79.4)	5,028 (69.1)	32,186 (44.6)	5,790 (44.1)	6,261 (48.3)	9,120 (49.1)
1,070 - 1,070	87,460 (50.5)	24,425 (52.1)	1,396 (99.8)	3,569 (77.4)	13,695 (53.1)	616 (39.7)	1,298 (38.0)	3,851 (38.1)	63,035 (49.9)	1,843 (89.1)	5,141 (70.7)	34,058 (47.2)	6,136 (46.7)	6,484 (50.0)	9,373 (50.4)
1,071 - 1,071	87,653 (50.7)	24,425 (52.1)	1,396 (99.8)	3,569 (77.4)	13,695 (53.1)	616 (39.7)	1,298 (38.0)	3,851 (38.1)	63,228 (50.1)	1,843 (89.1)	5,141 (70.7)	34,250 (47.5)	6,136 (46.7)	6,484 (50.0)	9,373 (50.4)
1,072 - 1,072	87,833 (50.8)	24,516 (52.3)	1,396 (99.8)	3,569 (77.4)	13,786 (53.5)	616 (39.7)	1,298 (38.0)	3,851 (38.1)	63,317 (50.2)	1,843 (89.1)	5,141 (70.7)	34,250 (47.5)	6,136 (46.7)	6,484 (50.0)	9,461 (50.9)
1,073 - 1,073	87,834 (50.8)	24,516 (52.3)	1,396 (99.8)	3,569 (77.4)	13,786 (53.5)	616 (39.7)	1,298 (38.0)	3,851 (38.1)	63,318 (50.2)	1,843 (89.1)	5,141 (70.7)	34,252 (47.5)	6,136 (46.7)	6,484 (50.0)	9,461 (50.9)
1,074 - 1,074	87,936 (50.8)	24,516 (52.3)	1,396 (99.8)	3,569 (77.4)	13,786 (53.5)	616 (39.7)	1,298 (38.0)	3,851 (38.1)	63,420 (50.3)	1,843 (89.1)	5,141 (70.7)	34,343 (47.6)	6,147 (46.8)	6,484 (50.0)	9,461 (50.9)
1,075 - 1,075	88,223 (51.0)	24,599 (52.5)	1,396 (99.8)	3,569 (77.4)	13,806 (53.6)	616 (39.7)	1,309 (38.3)	3,903 (38.7)	63,624 (50.4)	1,843 (89.1)	5,141 (70.7)	34,374 (47.6)	6,290 (47.9)	6,515 (50.3)	9,461 (50.9)
1,076 - 1,076	88,772 (51.3)	24,599 (52.5)	1,396 (99.8)	3,569 (77.4)	13,806 (53.6)	616 (39.7)	1,309 (38.3)	3,903 (38.7)	64,173 (50.8)	1,843 (89.1)	5,141 (70.7)	34,831 (48.3)	6,382 (48.6)	6,515 (50.3)	9,461 (50.9)
1,077 - 1,077	88,863 (51.4)	24,599 (52.5)	1,396 (99.8)	3,569 (77.4)	13,806 (53.6)	616 (39.7)	1,309 (38.3)	3,903 (38.7)	64,264 (50.9)	1,843 (89.1)	5,141 (70.7)	34,922 (48.4)	6,382 (48.6)	6,515 (50.3)	9,461 (50.9)
1,078 - 1,078	89,093 (51.5)	24,599 (52.5)	1,396 (99.8)	3,569 (77.4)	13,806 (53.6)	616 (39.7)	1,309 (38.3)	3,903 (38.7)	64,494 (51.1)	1,843 (89.1)	5,141 (70.7)	35,090 (48.6)	6,392 (48.7)	6,526 (50.4)	9,502 (51.1)
1,079 - 1,079	89,183 (51.5)	24,599 (52.5)	1,396 (99.8)	3,569 (77.4)	13,806 (53.6)	616 (39.7)	1,309 (38.3)	3,903 (38.7)	64,584 (51.2)	1,843 (89.1)	5,141 (70.7)	35,180 (48.7)	6,392 (48.7)	6,526 (50.4)	9,502 (51.1)
1,080 - 1,080	91,617 (52.9)	25,197 (53.8)	1,396 (99.8)	3,799 (82.4)	14,065 (54.6)	616 (39.7)	1,309 (38.3)	4,013 (39.7)	66,419 (52.6)	1,956 (94.5)	5,254 (72.2)	36,255 (50.2)	6,558 (49.9)	6,788 (52.4)	9,608 (51.7)
1,081 - 1,081	91,663 (53.0)	25,197 (53.8)	1,396 (99.8)	3,799 (82.4)	14,065 (54.6)	616 (39.7)	1,309 (38.3)	4,013 (39.7)	66,466 (52.7)	1,956 (94.5)	5,254 (72.2)	36,297 (50.3)	6,558 (49.9)	6,792 (52.4)	9,608 (51.7)
1,082 - 1,082	91,814 (53.1)	25,197 (53.8)	1,396 (99.8)	3,799 (82.4)	14,065 (54.6)	616 (39.7)	1,309 (38.3)	4,013 (39.7)	66,617 (52.8)	1,956 (94.5)	5,254 (72.2)	36,360 (50.4)	6,647 (50.6)	6,792 (52.4)	9,608 (51.7)
1,083 - 1,083	91,861 (53.1)	25,197 (53.8)	1,396 (99.8)	3,799 (82.4)	14,065 (54.6)	616 (39.7)	1,309 (38.3)	4,013 (39.7)	66,664 (52.8)	1,956 (94.5)	5,254 (72.2)	36,392 (50.4)	6,647 (50.6)	6,807 (52.5)	9,608 (51.7)
1,084 - 1,084	91,966 (53.1)	25,250 (53.9)	1,396 (99.8)	3,799 (82.4)	14,065 (54.6)	616 (39.7)	1,309 (38.3)	4,066 (40.3)	66,716 (52.9)	1,956 (94.5)	5,254 (72.2)	36,445 (50.5)	6,647 (50.6)	6,807 (52.5)	9,608 (51.7)
1,085 - 1,085	93,125 (53.8)	25,565 (54.6)	1,396 (99.8)	3,799 (82.4)	14,203 (55.1)	616 (39.7)	1,309 (38.3)	4,243 (42.0)	67,560 (53.5)	1,956 (94.5)	5,254 (72.2)	36,805 (51.0)	6,667 (50.8)	6,984 (53.9)	9,895 (53.2)

総括表(2)(産業・就業形態別の賃金額階級別、性別年齢別表)

06年 総括表(2)(パート労働者)

時間当たり所定内賃金額 (3手当を除く)	合計	男(歳)							女(歳)						
		男性計	17以下	18~19	20~54	55~59	60~64	65以上	女性計	17以下	18~19	20~54	55~59	60~64	65以上
1,086 - 1,086	94,696 (54.7)	26,779 (57.2)	1,396 (99.8)	3,799 (82.4)	14,636 (56.8)	616 (39.7)	1,742 (51.0)	4,590 (45.5)	67,918 (53.8)	1,956 (94.5)	5,254 (72.2)	36,892 (51.1)	6,927 (52.7)	6,994 (54.0)	9,895 (53.2)
1,087 - 1,087	94,801 (54.8)	26,779 (57.2)	1,396 (99.8)	3,799 (82.4)	14,636 (56.8)	616 (39.7)	1,742 (51.0)	4,590 (45.5)	68,023 (53.9)	1,956 (94.5)	5,254 (72.2)	36,945 (51.2)	6,927 (52.7)	7,046 (54.4)	9,895 (53.2)
1,088 - 1,088	94,822 (54.8)	26,779 (57.2)	1,396 (99.8)	3,799 (82.4)	14,636 (56.8)	616 (39.7)	1,742 (51.0)	4,590 (45.5)	68,043 (53.9)	1,956 (94.5)	5,254 (72.2)	36,955 (51.2)	6,927 (52.7)	7,057 (54.5)	9,895 (53.2)
1,089 - 1,089	94,874 (54.8)	26,779 (57.2)	1,396 (99.8)	3,799 (82.4)	14,636 (56.8)	616 (39.7)	1,742 (51.0)	4,590 (45.5)	68,095 (54.0)	1,956 (94.5)	5,254 (72.2)	36,955 (51.2)	6,980 (53.1)	7,057 (54.5)	9,895 (53.2)
1,090 - 1,090	96,401 (55.7)	27,122 (57.9)	1,396 (99.8)	3,799 (82.4)	14,969 (58.1)	616 (39.7)	1,752 (51.3)	4,590 (45.5)	69,279 (54.9)	1,956 (94.5)	5,367 (73.8)	37,627 (52.1)	7,067 (53.8)	7,248 (55.9)	10,014 (53.9)
1,091 - 1,091	96,678 (55.9)	27,174 (58.0)	1,396 (99.8)	3,799 (82.4)	15,022 (58.3)	616 (39.7)	1,752 (51.3)	4,590 (45.5)	69,503 (55.1)	1,956 (94.5)	5,367 (73.8)	37,732 (52.3)	7,071 (53.8)	7,311 (56.4)	10,067 (54.2)
1,092 - 1,092	96,836 (56.0)	27,227 (58.1)	1,396 (99.8)	3,799 (82.4)	15,022 (58.3)	669 (43.1)	1,752 (51.3)	4,590 (45.5)	69,609 (55.2)	1,956 (94.5)	5,367 (73.8)	37,825 (52.4)	7,071 (53.8)	7,321 (56.5)	10,069 (54.2)
1,093 - 1,093	96,941 (56.0)	27,279 (58.2)	1,396 (99.8)	3,799 (82.4)	15,074 (58.5)	669 (43.1)	1,752 (51.3)	4,590 (45.5)	69,661 (55.2)	1,956 (94.5)	5,367 (73.8)	37,878 (52.5)	7,071 (53.8)	7,321 (56.5)	10,069 (54.2)
1,094 - 1,094	96,948 (56.0)	27,279 (58.2)	1,396 (99.8)	3,799 (82.4)	15,074 (58.5)	669 (43.1)	1,752 (51.3)	4,590 (45.5)	69,669 (55.2)	1,956 (94.5)	5,367 (73.8)	37,885 (52.5)	7,071 (53.8)	7,321 (56.5)	10,069 (54.2)
1,095 - 1,095	97,270 (56.2)	27,342 (58.4)	1,396 (99.8)	3,799 (82.4)	15,137 (58.7)	669 (43.1)	1,752 (51.3)	4,590 (45.5)	69,928 (55.4)	1,956 (94.5)	5,367 (73.8)	37,960 (52.6)	7,136 (54.3)	7,352 (56.7)	10,157 (54.6)
1,096 - 1,096	97,397 (56.3)	27,342 (58.4)	1,396 (99.8)	3,799 (82.4)	15,137 (58.7)	669 (43.1)	1,752 (51.3)	4,590 (45.5)	70,055 (55.5)	1,956 (94.5)	5,367 (73.8)	38,088 (52.8)	7,136 (54.3)	7,352 (56.7)	10,157 (54.6)
1,097 - 1,097	97,397 (56.3)	27,342 (58.4)	1,396 (99.8)	3,799 (82.4)	15,137 (58.7)	669 (43.1)	1,752 (51.3)	4,590 (45.5)	70,055 (55.5)	1,956 (94.5)	5,367 (73.8)	38,088 (52.8)	7,136 (54.3)	7,352 (56.7)	10,157 (54.6)
1,098 - 1,098	97,520 (56.4)	27,398 (58.5)	1,396 (99.8)	3,799 (82.4)	15,191 (58.9)	669 (43.1)	1,752 (51.3)	4,592 (45.5)	70,122 (55.6)	1,956 (94.5)	5,367 (73.8)	38,088 (52.8)	7,197 (54.8)	7,357 (56.8)	10,157 (54.6)
1,099 - 1,099	97,520 (56.4)	27,398 (58.5)	1,396 (99.8)	3,799 (82.4)	15,191 (58.9)	669 (43.1)	1,752 (51.3)	4,592 (45.5)	70,122 (55.6)	1,956 (94.5)	5,367 (73.8)	38,088 (52.8)	7,197 (54.8)	7,357 (56.8)	10,157 (54.6)
1,100 - 1,100	112,114 (64.8)	31,762 (67.8)	1,396 (99.8)	4,066 (88.2)	18,073 (70.1)	752 (48.5)	1,933 (56.6)	5,541 (54.9)	80,352 (63.7)	1,956 (94.5)	6,150 (84.5)	44,811 (62.1)	8,008 (61.0)	8,344 (64.4)	11,083 (59.6)
1,101 - 1,101	112,241 (64.9)	31,814 (67.9)	1,396 (99.8)	4,066 (88.2)	18,125 (70.3)	752 (48.5)	1,933 (56.6)	5,541 (54.9)	80,427 (63.7)	1,956 (94.5)	6,150 (84.5)	44,865 (62.2)	8,008 (61.0)	8,365 (64.5)	11,083 (59.6)
1,102 - 1,102	112,283 (64.9)	31,814 (67.9)	1,396 (99.8)	4,066 (88.2)	18,125 (70.3)	752 (48.5)	1,933 (56.6)	5,541 (54.9)	80,469 (63.8)	1,956 (94.5)	6,150 (84.5)	44,865 (62.2)	8,008 (61.0)	8,365 (64.5)	11,125 (59.8)
1,103 - 1,103	112,342 (64.9)	31,873 (68.0)	1,396 (99.8)	4,066 (88.2)	18,125 (70.3)	752 (48.5)	1,933 (56.6)	5,600 (55.5)	80,469 (63.8)	1,956 (94.5)	6,150 (84.5)	44,865 (62.2)	8,008 (61.0)	8,365 (64.5)	11,125 (59.8)
1,104 - 1,104	112,409 (65.0)	31,887 (68.1)	1,396 (99.8)	4,066 (88.2)	18,130 (70.3)	752 (48.5)	1,943 (56.9)	5,600 (55.5)	80,522 (63.8)	1,956 (94.5)	6,150 (84.5)	44,865 (62.2)	8,008 (61.0)	8,365 (64.5)	11,178 (60.1)
1,105 - 1,105	112,494 (65.0)	31,887 (68.1)	1,396 (99.8)	4,066 (88.2)	18,130 (70.3)	752 (48.5)	1,943 (56.9)	5,600 (55.5)	80,607 (63.9)	1,956 (94.5)	6,150 (84.5)	44,865 (62.2)	8,083 (61.6)	8,375 (64.6)	11,178 (60.1)
1,106 - 1,106	112,599 (65.1)	31,940 (68.2)	1,396 (99.8)	4,066 (88.2)	18,130 (70.3)	752 (48.5)	1,943 (56.9)	5,653 (56.0)	80,659 (63.9)	1,956 (94.5)	6,150 (84.5)	44,918 (62.2)	8,083 (61.6)	8,375 (64.6)	11,178 (60.1)
1,107 - 1,107	112,662 (65.1)	31,940 (68.2)	1,396 (99.8)	4,066 (88.2)	18,130 (70.3)	752 (48.5)	1,943 (56.9)	5,653 (56.0)	80,722 (64.0)	1,956 (94.5)	6,150 (84.5)	44,928 (62.2)	8,083 (61.6)	8,428 (65.0)	11,178 (60.1)
1,108 - 1,108	112,663 (65.1)	31,941 (68.2)	1,396 (99.8)	4,066 (88.2)	18,130 (70.3)	752 (48.5)	1,943 (56.9)	5,654 (56.0)	80,722 (64.0)	1,956 (94.5)	6,150 (84.5)	44,928 (62.2)	8,083 (61.6)	8,428 (65.0)	11,178 (60.1)
1,109 - 1,109	112,667 (65.1)	31,945 (68.2)	1,396 (99.8)	4,066 (88.2)	18,133 (70.3)	752 (48.5)	1,943 (56.9)	5,654 (56.0)	80,722 (64.0)	1,956 (94.5)	6,150 (84.5)	44,928 (62.2)	8,083 (61.6)	8,428 (65.0)	11,178 (60.1)
1,110 - 1,110	115,053 (66.5)	32,524 (69.4)	1,396 (99.8)	4,066 (88.2)	18,422 (71.5)	869 (56.0)	2,040 (59.7)	5,731 (56.8)	82,529 (65.4)	1,956 (94.5)	6,150 (84.5)	45,854 (63.5)	8,307 (63.3)	8,845 (68.2)	11,416 (61.4)
1,120 - 1,120	117,232 (67.7)	33,023 (70.5)	1,396 (99.8)	4,066 (88.2)	18,764 (72.8)	869 (56.0)	2,145 (62.8)	5,783 (57.3)	84,209 (66.7)	1,956 (94.5)	6,263 (86.1)	46,667 (64.7)	8,461 (64.4)	9,115 (70.3)	11,747 (63.2)
1,130 - 1,130	118,088 (68.2)	33,122 (70.7)	1,396 (99.8)	4,066 (88.2)	18,852 (73.1)	869 (56.0)	2,145 (62.8)	5,794 (57.4)	84,967 (67.3)	1,956 (94.5)	6,263 (86.1)	47,087 (65.2)	8,629 (65.7)	9,223 (71.2)	11,810 (63.5)
1,140 - 1,140	119,573 (69.1)	33,285 (71.0)	1,396 (99.8)	4,066 (88.2)	18,960 (73.6)	869 (56.0)	2,145 (62.8)	5,849 (57.9)	86,288 (68.4)	1,956 (94.5)	6,375 (87.6)	47,837 (66.3)	8,842 (67.3)	9,338 (72.1)	11,941 (64.2)
1,150 - 1,150	124,049 (71.7)	34,171 (72.9)	1,396 (99.8)	4,066 (88.2)	19,636 (76.2)	869 (56.0)	2,165 (63.4)	6,039 (59.8)	89,877 (71.2)	1,956 (94.5)	6,488 (89.2)	50,056 (69.4)	9,239 (70.3)	9,694 (74.8)	12,444 (66.9)
1,160 - 1,160	125,286 (72.4)	34,340 (73.3)	1,396 (99.8)	4,066 (88.2)	19,696 (76.4)	869 (56.0)	2,165 (63.4)	6,148 (60.9)	90,946 (72.1)	1,956 (94.5)	6,488 (89.2)	50,836 (70.4)	9,344 (71.1)	9,813 (75.7)	12,510 (67.3)

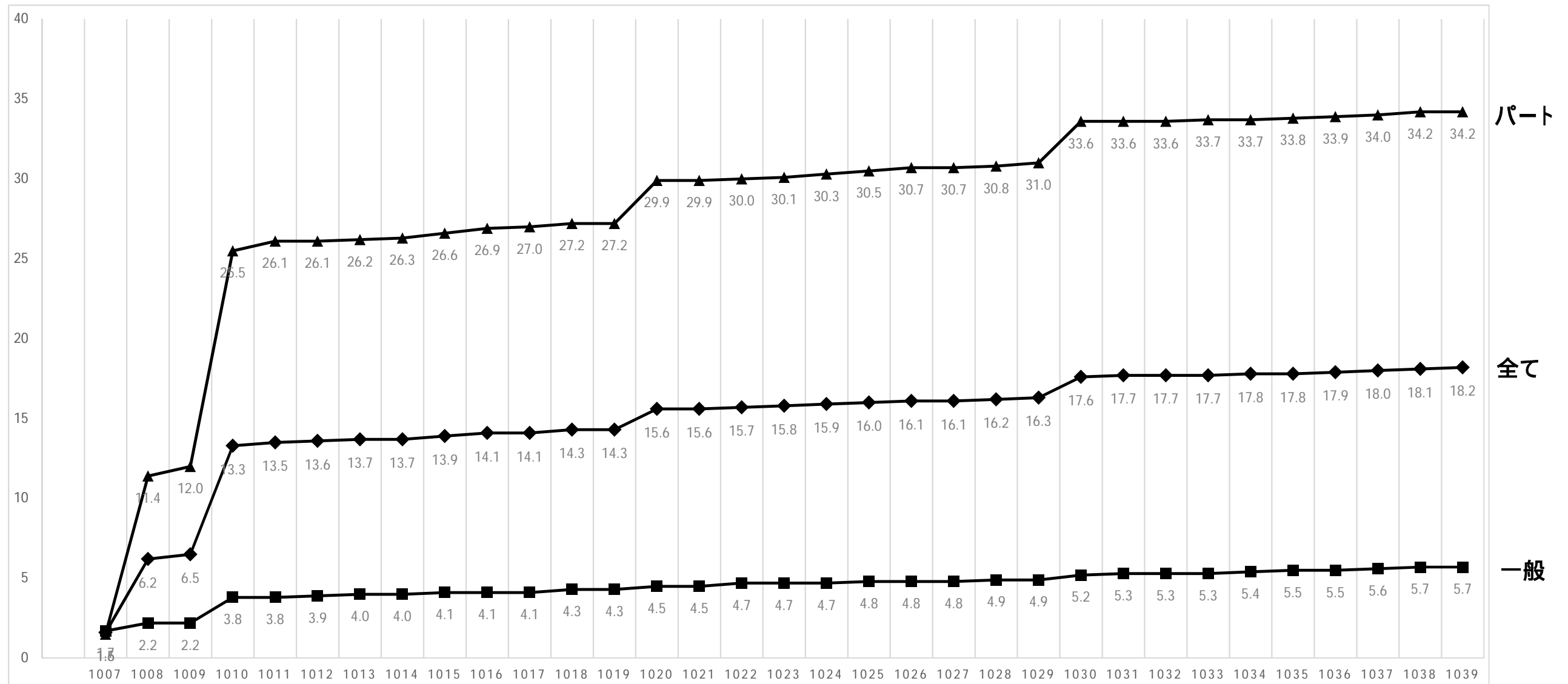
総括表(2)(産業・就業形態別の賃金額階級別、性別年齢別表)

06年 総括表(2)(パート労働者)

時間当り所定内賃金額 (3手当を除く)	合計	男(歳)							女(歳)						
		男性計	17以下	18~19	20~54	55~59	60~64	65以上	女性計	17以下	18~19	20~54	55~59	60~64	65以上
1,170 - 1,179	125,753 (72.7)	34,340 (73.3)	1,396 (99.8)	4,066 (88.2)	19,696 (76.4)	869 (56.0)	2,165 (63.4)	6,148 (60.9)	91,413 (72.4)	1,956 (94.5)	6,531 (89.8)	51,123 (70.8)	9,379 (71.4)	9,834 (75.9)	12,590 (67.7)
1,180 - 1,189	126,798 (73.3)	34,538 (73.7)	1,396 (99.8)	4,066 (88.2)	19,748 (76.6)	869 (56.0)	2,165 (63.4)	6,294 (62.3)	92,260 (73.1)	1,956 (94.5)	6,531 (89.8)	51,488 (71.3)	9,600 (73.1)	9,935 (76.7)	12,750 (68.6)
1,190 - 1,199	127,383 (73.6)	34,595 (73.8)	1,396 (99.8)	4,066 (88.2)	19,748 (76.6)	869 (56.0)	2,167 (63.4)	6,350 (62.9)	92,788 (73.5)	1,956 (94.5)	6,531 (89.8)	51,723 (71.7)	9,685 (73.7)	9,956 (76.8)	12,938 (69.6)
1,200 - 1,299	146,839 (84.9)	41,034 (87.6)	1,399 (100.0)	4,494 (97.5)	23,596 (91.5)	1,177 (75.9)	2,552 (74.7)	7,817 (77.4)	105,805 (83.8)	2,069 (100.0)	7,274 (100.0)	60,117 (83.3)	10,909 (83.1)	10,966 (84.6)	14,471 (77.8)
1,300 - 1,399	153,045 (88.4)	42,841 (91.4)		4,497 (97.6)	24,720 (95.9)	1,223 (78.8)	2,743 (80.3)	8,260 (81.8)	110,204 (87.3)			62,838 (87.1)	11,237 (85.6)	11,420 (88.1)	15,366 (82.7)
1,400 - 1,499	156,574 (90.5)	43,542 (92.9)		4,497 (97.6)	25,098 (97.4)	1,316 (84.8)	2,756 (80.7)	8,478 (84.0)	113,032 (89.6)			64,617 (89.5)	11,692 (89.0)	11,580 (89.4)	15,799 (85.0)
1,500 - 1,599	160,522 (92.8)	44,304 (94.6)		4,609 (100.0)	25,177 (97.7)	1,323 (85.3)	2,763 (80.9)	9,033 (89.5)	116,218 (92.1)			66,391 (92.0)	11,851 (90.2)	11,883 (91.7)	16,750 (90.1)
1,600 - 1,699	162,813 (94.1)	44,954 (95.9)			25,391 (98.5)	1,365 (88.0)	3,027 (88.6)	9,162 (90.7)	117,859 (93.4)			67,118 (93.0)	12,104 (92.2)	12,202 (94.2)	17,091 (91.9)
1,700 - 1,799	163,948 (94.7)	45,094 (96.2)			25,396 (98.5)	1,420 (91.5)	3,083 (90.3)	9,187 (91.0)	118,854 (94.2)			67,849 (94.0)	12,104 (92.2)	12,252 (94.5)	17,305 (93.1)
1,800 - 1,899	166,013 (95.9)	45,114 (96.3)			25,396 (98.5)	1,420 (91.5)	3,083 (90.3)	9,208 (91.2)	120,898 (95.8)			68,804 (95.3)	12,530 (95.4)	12,441 (96.0)	17,780 (95.6)
1,900 - 1,999	166,748 (96.4)	45,186 (96.4)			25,396 (98.5)	1,421 (91.6)	3,085 (90.3)	9,277 (91.9)	121,562 (96.3)			69,206 (95.9)	12,632 (96.2)	12,441 (96.0)	17,940 (96.5)
2,000 -	173,052 (100.0)	46,851 (100.0)			25,778 (100.0)	1,551 (100.0)	3,416 (100.0)	10,098 (100.0)	126,201 (100.0)			72,175 (100.0)	13,133 (100.0)	12,960 (100.0)	18,590 (100.0)
月平均賃金額	88,541	84,119	47,471	47,034	74,377	124,588	126,648	110,385	90,183	38,155	47,256	93,386	101,521	95,796	88,413
時間当り平均賃金額	1,195	1,201	1,020	1,059	1,121	1,254	1,812	1,278	1,193	1,033	1,061	1,205	1,191	1,179	1,225
月一人当たり労働時間数	75	72	46	45	67	101	98	89	76	37	45	78	87	82	75
第1・20分位数	1,008	1,008	1,008	1,008	1,008	1,008	1,008	1,008	1,008	1,008	1,008	1,008	1,008	1,008	1,000
第1・10分位数	1,008	1,008	1,008	1,008	1,008	1,008	1,008	1,009	1,009	1,008	1,008	1,010	1,010	1,009	1,008
第1・4分位数	1,010	1,010	1,008	1,008	1,010	1,029	1,030	1,036	1,016	1,008	1,010	1,023	1,024	1,011	1,010
中位数	1,070	1,060	1,010	1,010	1,050	1,110	1,086	1,100	1,071	1,010	1,050	1,080	1,082	1,070	1,070
四分位偏差係数	0.0888	0.0896	0.0109	0.0307	0.0667	0.1059	0.1243	0.0977	0.0859	0.0257	0.0429	0.0819	0.0813	0.0729	0.1168

第1表 令和6年度 就業形態別累積構成比表

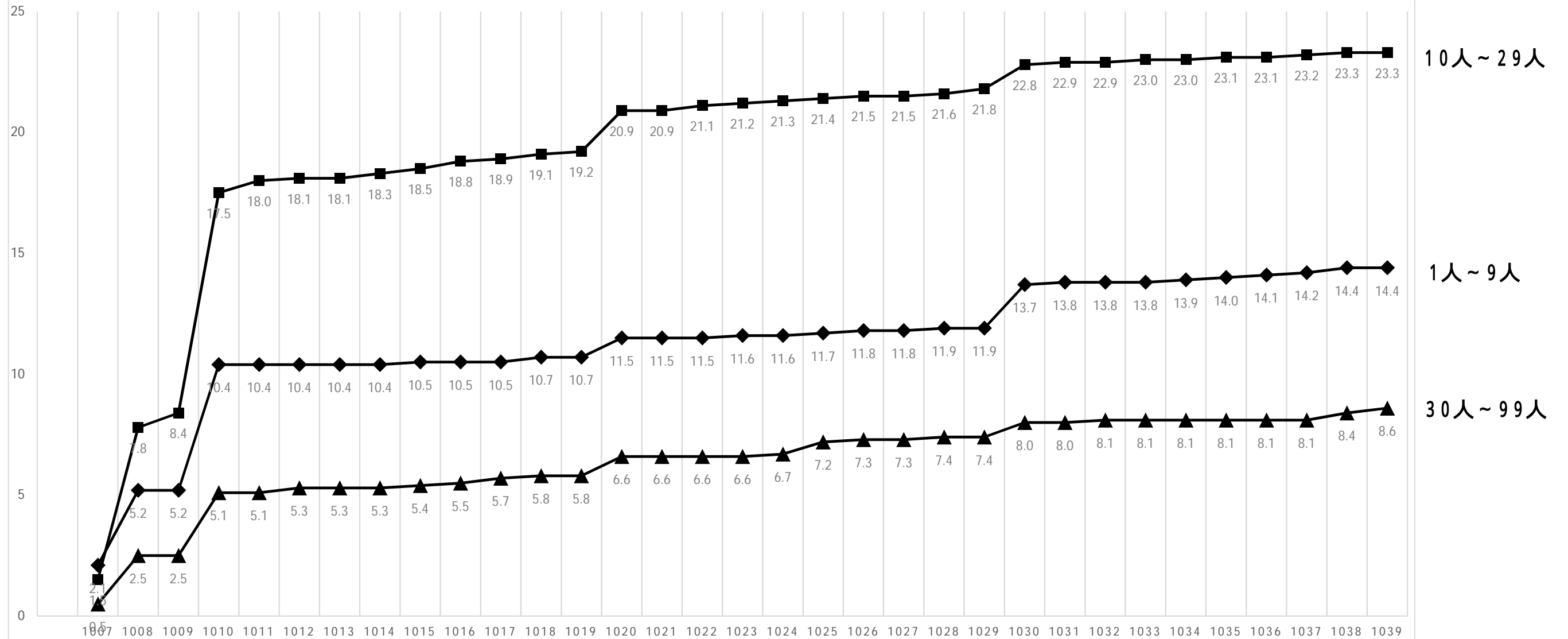
「パート労働者」については、1010年に大きな段差が存在する。



	1007	1008	1009	1010	1011	1012	1013	1014	1015	1016	1017	1018	1019	1020	1021	1022	1023	1024	1025	1026	1027	1028	1029	1030	1031	1032	1033	1034	1035	1036	1037	1038	1039
◆ 全て	1.6	6.2	6.5	13.3	13.5	13.6	13.7	13.7	13.9	14.1	14.1	14.3	14.3	15.6	15.6	15.7	15.8	15.9	16.0	16.1	16.1	16.2	16.3	17.6	17.7	17.7	17.7	17.8	17.8	17.9	18.0	18.1	18.2
一般	1.7	2.2	2.2	3.8	3.8	3.9	4.0	4.0	4.1	4.1	4.1	4.3	4.3	4.5	4.5	4.7	4.7	4.7	4.8	4.8	4.8	4.9	4.9	5.2	5.3	5.3	5.3	5.4	5.5	5.5	5.6	5.7	5.7
パート	1.5	11.4	12.0	25.5	26.1	26.1	26.2	26.3	26.6	26.9	27.0	27.2	27.2	29.9	29.9	30.0	30.1	30.3	30.5	30.7	30.7	30.8	31.0	33.6	33.6	33.6	33.7	33.7	33.8	33.9	34.0	34.2	34.2

第2表 令和6年度 規模別累積構成比表

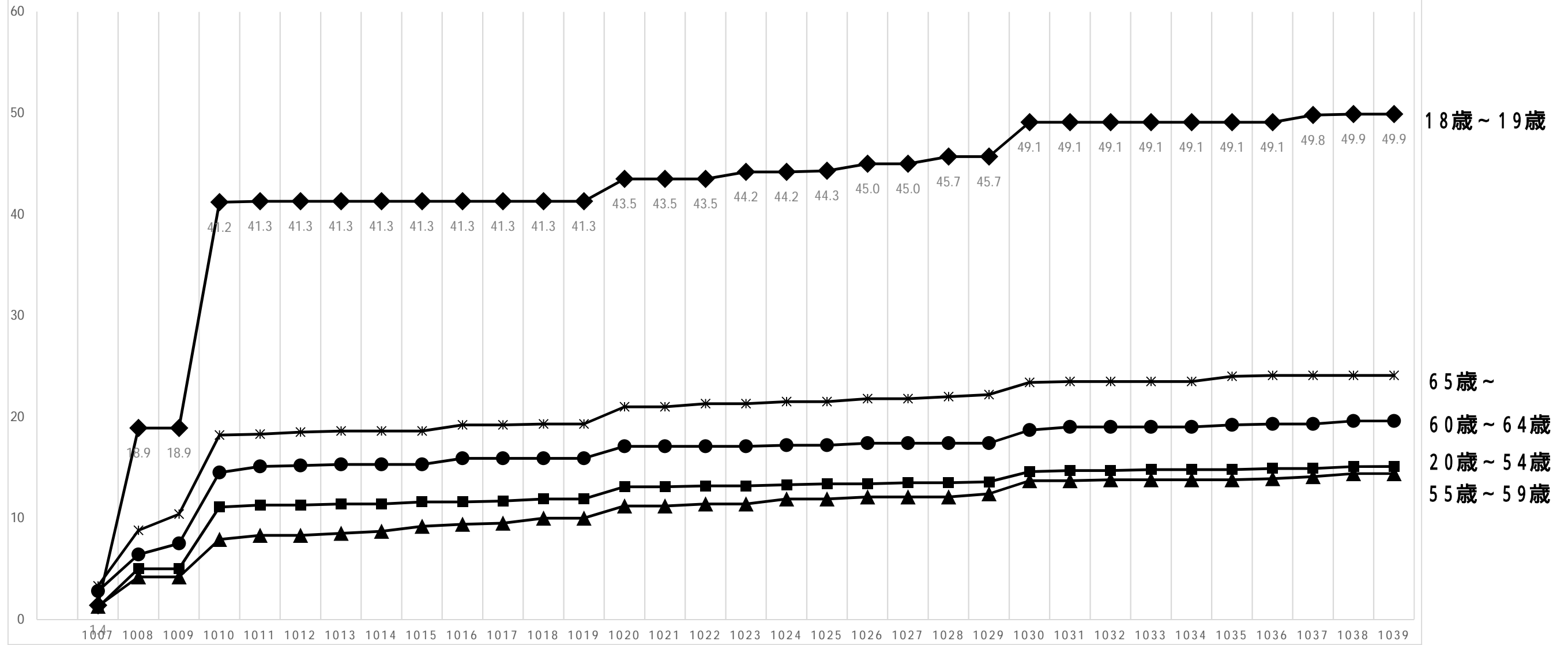
労働者が「10人から29人」の事業場については、1010円に大きな段差が存在する。



労働者数(人)	1007	1008	1009	1010	1011	1012	1013	1014	1015	1016	1017	1018	1019	1020	1021	1022	1023	1024	1025	1026	1027	1028	1029	1030	1031	1032	1033	1034	1035	1036	1037	1038	1039	
◆ 1～9	2.1	5.2	5.2	10.4	10.4	10.4	10.4	10.4	10.5	10.5	10.5	10.7	10.7	11.5	11.5	11.5	11.6	11.6	11.7	11.8	11.8	11.9	11.9	13.7	13.8	13.8	13.8	13.9	14.0	14.1	14.2	14.4	14.4	
■ 10～29	1.5	7.8	8.4	17.5	18.0	18.1	18.1	18.3	18.5	18.8	18.9	19.1	19.2	20.9	20.9	21.1	21.2	21.3	21.4	21.5	21.5	21.6	21.8	22.8	22.9	22.9	23.0	23.0	23.1	23.1	23.2	23.3	23.3	
▲ 30～99	0.5	2.5	2.5	5.1	5.1	5.3	5.3	5.3	5.4	5.5	5.7	5.8	5.8	6.6	6.6	6.6	6.6	6.7	7.2	7.3	7.3	7.4	7.4	8.0	8.0	8.1	8.1	8.1	8.1	8.1	8.1	8.1	8.4	8.6

第3表 令和6年度 年齢別累積構成比表

「18歳～19歳」の労働者については、1010円に大きな段差が存在する。



年齢(歳)	1007	1008	1009	1010	1011	1012	1013	1014	1015	1016	1017	1018	1019	1020	1021	1022	1023	1024	1025	1026	1027	1028	1029	1030	1031	1032	1033	1034	1035	1036	1037	1038	1039	
◆ 18～19	1.4	18.9	18.9	41.2	41.3	41.3	41.3	41.3	41.3	41.3	41.3	41.3	41.3	43.5	43.5	43.5	44.2	44.2	44.3	45.0	45.0	45.7	45.7	49.1	49.1	49.1	49.1	49.1	49.1	49.1	49.1	49.8	49.9	49.9
■ 20～54	1.2	5.0	5.0	11.1	11.3	11.3	11.4	11.4	11.6	11.6	11.7	11.9	11.9	13.1	13.1	13.2	13.2	13.3	13.4	13.4	13.5	13.5	13.6	14.6	14.7	14.7	14.8	14.8	14.8	14.9	14.9	15.1	15.1	
▲ 55～59	1.3	4.2	4.2	7.9	8.3	8.3	8.5	8.7	9.2	9.4	9.5	10.0	10.0	11.2	11.2	11.4	11.4	11.9	11.9	12.1	12.1	12.1	12.4	13.7	13.7	13.8	13.8	13.8	13.8	13.9	14.1	14.4	14.4	
● 60～64	2.8	6.4	7.5	14.5	15.1	15.2	15.3	15.3	15.3	15.9	15.9	15.9	15.9	17.1	17.1	17.1	17.1	17.2	17.2	17.4	17.4	17.4	17.4	18.7	19.0	19.0	19.0	19.0	19.2	19.3	19.3	19.6	19.6	
* 65～	3.3	8.8	10.4	18.2	18.3	18.5	18.6	18.6	18.6	19.2	19.2	19.3	19.3	21.0	21.0	21.3	21.3	21.5	21.5	21.8	21.8	22.0	22.2	23.4	23.5	23.5	23.5	23.5	24.0	24.1	24.1	24.1	24.1	

第4表 令和6年度 規模別・年齢別分位数表

(全 て)

	合計	規模別(人)			年齢別(歳)				
		1～9	10～29	30～99	18～19	20～54	55～59	60～64	65～
第1・20分位数	1,008	1,008	1,008	1,010	1,008	1,008	1,010	1,008	1,008
第1・10分位数	1,010	1,010	1,010	1,050	1,008	1,010	1,020	1,010	1,009
第1・4分位数	1,064	1,080	1,050	1,136	1,010	1,086	1,090	1,050	1,040
中 位 数	1,250	1,266	1,200	1,468	1,040	1,300	1,350	1,190	1,180

(一 般)

	合計	規模別(人)			年齢別(歳)				
		1～9	10～29	30～99	18～19	20～54	55～59	60～64	65～
第1・20分位数	1,030	1,010	1,046	1,090	985	1,039	1,030	1,010	1,013
第1・10分位数	1,086	1,060	1,093	1,196	1,008	1,100	1,095	1,066	1,049
第1・4分位数	1,244	1,214	1,233	1,373	1,010	1,261	1,261	1,190	1,136
中 位 数	1,508	1,500	1,486	1,642	1,030	1,519	1,655	1,449	1,377

(パ ー ト)

	合計	規模別(人)			年齢別(歳)				
		1～9	10～29	30～99	18～19	20～54	55～59	60～64	65～
第1・20分位数	1,008	1,008	1,008	1,008	1,008	1,008	1,008	1,008	1,008
第1・10分位数	1,008	1,010	1,008	1,010	1,008	1,008	1,010	1,008	1,008
第1・4分位数	1,010	1,040	1,010	1,038	1,010	1,018	1,025	1,016	1,010
中 位 数	1,070	1,090	1,050	1,080	1,043	1,079	1,086	1,085	1,086

第5表 令和3年度から令和6年度までの規模別・年齢別分位数表(全て)

(令和6年度)

	合計	規模別(人)			年齢別(歳)				
		1～9	10～29	30～99	18～19	20～54	55～59	60～64	65～
第1・20分位数	1,008	1,008	1,008	1,010	1,008	1,008	1,010	1,008	1,008
第1・10分位数	1,010	1,010	1,010	1,050	1,008	1,010	1,020	1,010	1,009
第1・4分位数	1,064	1,080	1,050	1,136	1,010	1,086	1,090	1,050	1,040
中位数	1,250	1,266	1,200	1,468	1,040	1,300	1,350	1,190	1,180

(令和5年度)

	合計	規模別(人)			年齢別(歳)				
		1～9	10～29	30～99	18～19	20～54	55～59	60～64	65～
第1・20分位数	968	968	968	980	968	970	970	970	968
第1・10分位数	970	970	970	1,006	968	980	980	980	968
第1・4分位数	1,010	1,000	1,003	1,090	970	1,043	1,030	1,006	980
中位数	1,233	1,214	1,200	1,422	988	1,287	1,390	1,200	1,085

(令和4年度)

	合計	規模別(人)			年齢別(歳)				
		1～9	10～29	30～99	18～19	20～54	55～59	60～64	65～
第1・20分位数	937	937	937	937	937	940	940	937	937
第1・10分位数	940	940	940	1,000	937	945	950	940	940
第1・4分位数	984	987	970	1,147	940	1,000	1,000	1,000	950
中位数	1,208	1,166	1,211	1,436	950	1,267	1,300	1,154	1,009

(令和3年度)

	合計	規模別(人)			年齢別(歳)				
		1～9	10～29	30～99	18～19	20～54	55～59	60～64	65～
第1・20分位数	909	909	910	909	909	910	909	910	909
第1・10分位数	910	910	912	912	910	919	910	917	910
第1・4分位数	950	968	950	1,000	910	993	950	960	924
中位数	1,112	1,154	1,091	1,135	950	1,186	1,141	1,077	1,000

第6表 令和3年度から令和6年度までの規模別・年齢別分位数表(パート)

(令和6年度)

	合計	規模別(人)			年齢別(歳)				
		1~9	10~29	30~99	18~19	20~54	55~59	60~64	65~
第1・20分位数	1,008	1,008	1,008	1,008	1,008	1,008	1,008	1,008	1,008
第1・10分位数	1,008	1,010	1,008	1,010	1,008	1,008	1,010	1,008	1,008
第1・4分位数	1,010	1,040	1,010	1,038	1,010	1,018	1,025	1,016	1,010
中位数	1,070	1,090	1,050	1,080	1,043	1,079	1,086	1,085	1,086

(令和5年度)

	合計	規模別(人)			年齢別(歳)				
		1~9	10~29	30~99	18~19	20~54	55~59	60~64	65~
第1・20分位数	968	968	968	970	968	968	968	970	968
第1・10分位数	970	970	970	970	968	970	970	970	968
第1・4分位数	980	980	975	1,000	970	984	980	1,000	972
中位数	1,010	1,000	1,020	1,030	980	1,020	1,030	1,034	1,020

(令和4年度)

	合計	規模別(人)			年齢別(歳)				
		1~9	10~29	30~99	18~19	20~54	55~59	60~64	65~
第1・20分位数	937	937	937	950	937	937	940	937	937
第1・10分位数	940	940	940	970	937	940	940	938	940
第1・4分位数	950	950	945	1,000	940	950	960	960	950
中位数	990	1,000	980	1,033	950	1,000	1,000	1,000	1,000

(令和3年度)

	合計	規模別(人)			年齢別(歳)				
		1~9	10~29	30~99	18~19	20~54	55~59	60~64	65~
第1・20分位数	909	909	909	909	909	909	909	909	909
第1・10分位数	910	910	910	910	910	910	910	910	910
第1・4分位数	920	920	920	985	910	925	924	920	920
中位数	970	990	950	1,000	950	995	992	980	970

京都府最低賃金の推移

(平成15年度～令和5年度)

京都労働局労働基準部賃金室

年度	発効年月日	最低賃金時間額(円)	対前年度引上額・率		影響率(%)
			引上額 (円)	引上率 (%)	
15	H14.10.1	677	0	0.00	
16	H16.10.1	678	1	0.15	2.0
17	H17.10.1	682	4	0.59	2.1
18	H18.10.1	686	4	0.59	1.6
19	H19.10.25	700	14	2.04	1.7
20	H20.10.25	717	17	2.43	4.5
21	H21.10.17	729	12	1.67	2.9
22	H22.10.17	749	20	2.74	3.9
23	H23.10.16	751	2	0.27	7.0
24	H24.10.14	759	8	1.07	5.8
25	H25.10.24	773	14	1.84	8.4
26	H26.10.22	789	16	2.07	7.3
27	H27.10.7	807	18	2.28	12.7
28	H28.10.2	831	24	2.97	15.1
29	H29.10.1	856	25	3.01	13.7
30	H30.10.1	882	26	3.04	14.1
元	R元.10.1	909	27	3.06	18.1
2	R元.10.1	909	0	0.00	
3	R3.10.1	937	28	3.08	19.1
4	R4.10.9	968	31	3.31	21.2
5	R5.10.6	1,008	40	4.13	24.5

「影響率」とは、最低賃金額賃金を改正した後に、改正後の最低賃金を下回ることとなる労働者割合である。

R6.7.19作成