

# **最低賃金に関する基礎調査報告書（電機）**

**令和5年10月**

**石川労働局**

時間当り所定内賃金額 （3手当を除く）	合計	規模別			地域別				年齢別					
		1～9人	10～29人	30～99人	金沢	小松	七尾	穴水	17歳以下	18～19歳	20～54歳	55～59歳	60～64歳	65歳以上
計	851	51	231	568	468	281	102			1	717	77	55	
円	191	1	46	145	114	61	16				158	24	9	
- 912	(22.5)	(2.0)	(19.7)	(25.5)	(24.4)	(21.7)	(15.7)				(22.0)	(31.6)	(16.3)	
913 - 913	191	1	46	145	114	61	16				158	24	9	
	(22.5)	(2.0)	(19.7)	(25.5)	(24.4)	(21.7)	(15.7)				(22.0)	(31.6)	(16.3)	
914 - 914	191	1	46	145	114	61	16				158	24	9	
	(22.5)	(2.0)	(19.7)	(25.5)	(24.4)	(21.7)	(15.7)				(22.0)	(31.6)	(16.3)	
915 - 915	194	1	49	145	117	61	16				161	24	9	
	(22.8)	(2.0)	(21.0)	(25.5)	(25.1)	(21.7)	(15.7)				(22.4)	(31.6)	(16.3)	
916 - 916	194	1	49	145	117	61	16				161	24	9	
	(22.8)	(2.0)	(21.0)	(25.5)	(25.1)	(21.7)	(15.7)				(22.4)	(31.6)	(16.3)	
917 - 917	194	1	49	145	117	61	16				161	24	9	
	(22.8)	(2.0)	(21.0)	(25.5)	(25.1)	(21.7)	(15.7)				(22.4)	(31.6)	(16.3)	
918 - 918	194	1	49	145	117	61	16				161	24	9	
	(22.8)	(2.0)	(21.0)	(25.5)	(25.1)	(21.7)	(15.7)				(22.4)	(31.6)	(16.3)	
919 - 919	203	1	56	147	117	61	25				164	24	15	
	(23.9)	(2.0)	(24.2)	(25.8)	(25.1)	(21.7)	(24.7)				(22.8)	(31.6)	(27.7)	
920 - 920	224	1	57	166	117	81	25				183	24	16	
	(26.3)	(2.0)	(24.6)	(29.2)	(25.1)	(28.9)	(24.7)				(25.5)	(31.6)	(29.6)	
921 - 921	224	1	57	166	117	81	25				183	24	16	
	(26.3)	(2.0)	(24.6)	(29.2)	(25.1)	(28.9)	(24.7)				(25.5)	(31.6)	(29.6)	
922 - 922	224	1	57	166	117	81	25				183	24	16	
	(26.3)	(2.0)	(24.6)	(29.2)	(25.1)	(28.9)	(24.7)				(25.5)	(31.6)	(29.6)	
923 - 923	263	1	72	190	117	92	53				219	26	18	
	(30.9)	(2.0)	(31.1)	(33.4)	(25.1)	(32.9)	(52.0)				(30.5)	(33.4)	(33.0)	
924 - 924	263	1	72	190	117	92	53				219	26	18	
	(30.9)	(2.0)	(31.1)	(33.4)	(25.1)	(32.9)	(52.0)				(30.5)	(33.4)	(33.0)	
925 - 925	263	1	72	190	117	92	53				219	26	18	
	(30.9)	(2.0)	(31.1)	(33.4)	(25.1)	(32.9)	(52.0)				(30.5)	(33.4)	(33.0)	
926 - 926	267	1	72	194	122	92	53				223	26	18	
	(31.4)	(2.0)	(31.1)	(34.2)	(26.0)	(32.9)	(52.0)				(31.1)	(33.4)	(33.0)	
927 - 927	267	1	72	194	122	92	53				223	26	18	
	(31.4)	(2.0)	(31.1)	(34.2)	(26.0)	(32.9)	(52.0)				(31.1)	(33.4)	(33.0)	
928 - 928	267	1	72	194	122	92	53				223	26	18	
	(31.4)	(2.0)	(31.1)	(34.2)	(26.0)	(32.9)	(52.0)				(31.1)	(33.4)	(33.0)	
929 - 929	267	1	72	194	122	92	53				223	26	18	
	(31.4)	(2.0)	(31.1)	(34.2)	(26.0)	(32.9)	(52.0)				(31.1)	(33.4)	(33.0)	
930 - 930	278	1	72	205	122	103	53				230	29	18	
	(32.7)	(2.0)	(31.1)	(36.1)	(26.0)	(36.7)	(52.0)				(32.1)	(38.0)	(33.0)	
931 - 931	278	1	72	205	122	103	53				230	29	18	
	(32.7)	(2.0)	(31.1)	(36.1)	(26.0)	(36.7)	(52.0)				(32.1)	(38.0)	(33.0)	
932 - 932	278	1	72	205	122	103	53				230	29	18	
	(32.7)	(2.0)	(31.1)	(36.1)	(26.0)	(36.7)	(52.0)				(32.1)	(38.0)	(33.0)	
933 - 933	278	1	72	205	122	103	53				230	29	18	
	(32.7)	(2.0)	(31.1)	(36.1)	(26.0)	(36.7)	(52.0)				(32.1)	(38.0)	(33.0)	
934 - 934	281	1	72	209	122	107	53				234	29	18	
	(33.1)	(2.0)	(31.1)	(36.7)	(26.0)	(38.0)	(52.0)				(32.6)	(38.0)	(33.0)	
935 - 935	281	1	72	209	122	107	53				234	29	18	
	(33.1)	(2.0)	(31.1)	(36.7)	(26.0)	(38.0)	(52.0)				(32.6)	(38.0)	(33.0)	
936 - 936	281	1	72	209	122	107	53				234	29	18	
	(33.1)	(2.0)	(31.1)	(36.7)	(26.0)	(38.0)	(52.0)				(32.6)	(38.0)	(33.0)	
937 - 937	281	1	72	209	122	107	53				234	29	18	
	(33.1)	(2.0)	(31.1)	(36.7)	(26.0)	(38.0)	(52.0)				(32.6)	(38.0)	(33.0)	
938 - 938	281	1	72	209	122	107	53				234	29	18	
	(33.1)	(2.0)	(31.1)	(36.7)	(26.0)	(38.0)	(52.0)				(32.6)	(38.0)	(33.0)	
939 - 939	285	1	72	212	122	110	53				237	29	18	
	(33.5)	(2.0)	(31.1)	(37.3)	(26.0)	(39.3)	(52.0)				(33.1)	(38.0)	(33.0)	

940	-	940	285 (33.5)	1 (2.0)	72 (31.1)	212 (37.3)	122 (26.0)	110 (39.3)	53 (52.0)					237 (33.1)	29 (38.0)	18 (33.0)
941	-	941	287 (33.7)	1 (2.0)	72 (31.1)	214 (37.7)	124 (26.4)	110 (39.3)	53 (52.0)					239 (33.4)	29 (38.0)	18 (33.0)
942		942	287 (33.7)	1 (2.0)	72 (31.1)	214 (37.7)	124 (26.4)	110 (39.3)	53 (52.0)					239 (33.4)	29 (38.0)	18 (33.0)
943		943	291 (34.2)	1 (2.0)	72 (31.1)	218 (38.3)	124 (26.4)	110 (39.3)	57 (55.7)					243 (33.9)	29 (38.0)	18 (33.0)
944		944	291 (34.2)	1 (2.0)	72 (31.1)	218 (38.3)	124 (26.4)	110 (39.3)	57 (55.7)					243 (33.9)	29 (38.0)	18 (33.0)
945		945	292 (34.3)	1 (2.0)	73 (31.5)	218 (38.3)	125 (26.6)	110 (39.3)	57 (55.7)					244 (34.0)	29 (38.0)	18 (33.0)
946		946	296 (34.8)	1 (2.0)	73 (31.5)	222 (39.1)	129 (27.5)	110 (39.3)	57 (55.7)					248 (34.6)	29 (38.0)	18 (33.0)
947		947	296 (34.8)	1 (2.0)	73 (31.5)	222 (39.1)	129 (27.5)	110 (39.3)	57 (55.7)					248 (34.6)	29 (38.0)	18 (33.0)
948		948	296 (34.8)	1 (2.0)	73 (31.5)	222 (39.1)	129 (27.5)	110 (39.3)	57 (55.7)					248 (34.6)	29 (38.0)	18 (33.0)
949		949	296 (34.8)	1 (2.0)	73 (31.5)	222 (39.1)	129 (27.5)	110 (39.3)	57 (55.7)					248 (34.6)	29 (38.0)	18 (33.0)
950		950	299 (35.1)	1 (2.0)	74 (31.9)	224 (39.4)	129 (27.5)	111 (39.6)	59 (57.6)					250 (34.9)	30 (39.3)	18 (33.0)
951		951	299 (35.1)	1 (2.0)	74 (31.9)	224 (39.4)	129 (27.5)	111 (39.6)	59 (57.6)					250 (34.9)	30 (39.3)	18 (33.0)
952		952	299 (35.1)	1 (2.0)	74 (31.9)	224 (39.4)	129 (27.5)	111 (39.6)	59 (57.6)					250 (34.9)	30 (39.3)	18 (33.0)
953		953	299 (35.1)	1 (2.0)	74 (31.9)	224 (39.4)	129 (27.5)	111 (39.6)	59 (57.6)					250 (34.9)	30 (39.3)	18 (33.0)
954		954	299 (35.1)	1 (2.0)	74 (31.9)	224 (39.4)	129 (27.5)	111 (39.6)	59 (57.6)					250 (34.9)	30 (39.3)	18 (33.0)
955		955	299 (35.1)	1 (2.0)	74 (31.9)	224 (39.4)	129 (27.5)	111 (39.6)	59 (57.6)					250 (34.9)	30 (39.3)	18 (33.0)
956		956	299 (35.1)	1 (2.0)	74 (31.9)	224 (39.4)	129 (27.5)	111 (39.6)	59 (57.6)					250 (34.9)	30 (39.3)	18 (33.0)
957		957	299 (35.1)	1 (2.0)	74 (31.9)	224 (39.4)	129 (27.5)	111 (39.6)	59 (57.6)					250 (34.9)	30 (39.3)	18 (33.0)
958		958	299 (35.1)	1 (2.0)	74 (31.9)	224 (39.4)	129 (27.5)	111 (39.6)	59 (57.6)					250 (34.9)	30 (39.3)	18 (33.0)
959		959	302 (35.6)	1 (2.0)	74 (31.9)	228 (40.1)	129 (27.5)	111 (39.6)	62 (61.3)					254 (35.4)	30 (39.3)	18 (33.0)
960		960	302 (35.6)	1 (2.0)	74 (31.9)	228 (40.1)	129 (27.5)	111 (39.6)	62 (61.3)					254 (35.4)	30 (39.3)	18 (33.0)
961		961	302 (35.6)	1 (2.0)	74 (31.9)	228 (40.1)	129 (27.5)	111 (39.6)	62 (61.3)					254 (35.4)	30 (39.3)	18 (33.0)
962		962	302 (35.6)	1 (2.0)	74 (31.9)	228 (40.1)	129 (27.5)	111 (39.6)	62 (61.3)					254 (35.4)	30 (39.3)	18 (33.0)
963		963	302 (35.6)	1 (2.0)	74 (31.9)	228 (40.1)	129 (27.5)	111 (39.6)	62 (61.3)					254 (35.4)	30 (39.3)	18 (33.0)
964		964	304 (35.7)	1 (2.0)	75 (32.4)	228 (40.1)	129 (27.5)	111 (39.6)	63 (62.3)					255 (35.5)	30 (39.3)	18 (33.0)
965		965	304 (35.7)	1 (2.0)	75 (32.4)	228 (40.1)	129 (27.5)	111 (39.6)	63 (62.3)					255 (35.5)	30 (39.3)	18 (33.0)
966		966	304 (35.7)	1 (2.0)	75 (32.4)	228 (40.1)	129 (27.5)	111 (39.6)	63 (62.3)					255 (35.5)	30 (39.3)	18 (33.0)
967		967	304 (35.7)	1 (2.0)	75 (32.4)	228 (40.1)	129 (27.5)	111 (39.6)	63 (62.3)					255 (35.5)	30 (39.3)	18 (33.0)
968		968	304 (35.7)	1 (2.0)	75 (32.4)	228 (40.1)	129 (27.5)	111 (39.6)	63 (62.3)					255 (35.5)	30 (39.3)	18 (33.0)
969		969	305 (35.9)	1 (2.0)	75 (32.4)	230 (40.4)	131 (27.9)	111 (39.6)	63 (62.3)					257 (35.8)	30 (39.3)	18 (33.0)
970		970	305 (35.9)	1 (2.0)	75 (32.4)	230 (40.4)	131 (27.9)	111 (39.6)	63 (62.3)					257 (35.8)	30 (39.3)	18 (33.0)

971	971	305 (35.9)	1 (2.0)	75 (32.4)	230 (40.4)	131 (27.9)	111 (39.6)	63 (62.3)				257 (35.8)	30 (39.3)	18 (33.0)
972	972	305 (35.9)	1 (2.0)	75 (32.4)	230 (40.4)	131 (27.9)	111 (39.6)	63 (62.3)				257 (35.8)	30 (39.3)	18 (33.0)
973	973	307 (36.1)	1 (2.0)	75 (32.4)	232 (40.8)	133 (28.3)	111 (39.6)	63 (62.3)				259 (36.1)	30 (39.3)	18 (33.0)
974	979	309 (36.4)	1 (2.0)	75 (32.4)	234 (41.1)	133 (28.3)	111 (39.6)	65 (64.2)				261 (36.4)	30 (39.3)	18 (33.0)
980	989	311 (36.6)	1 (2.0)	77 (33.3)	234 (41.1)	133 (28.3)	111 (39.6)	67 (66.2)				262 (36.5)	30 (39.3)	19 (34.9)
990	999	317 (37.3)	1 (2.0)	78 (33.9)	238 (41.8)	137 (29.3)	111 (39.6)	69 (67.6)				267 (37.3)	30 (39.3)	19 (34.9)
1000	1009	336 (39.5)	1 (2.0)	79 (34.3)	256 (45.0)	138 (29.5)	129 (46.0)	69 (67.6)				285 (39.8)	31 (40.6)	19 (34.9)
1010	1019	351 (41.2)	1 (2.0)	81 (35.2)	268 (47.2)	140 (29.9)	140 (49.8)	71 (69.4)				299 (41.7)	32 (41.9)	19 (34.9)
1020	1029	364 (42.7)	1 (2.0)	83 (36.0)	279 (49.2)	143 (30.5)	148 (52.7)	73 (71.3)				312 (43.5)	32 (41.9)	19 (34.9)
1030	1039	373 (43.8)	1 (2.0)	83 (36.0)	289 (50.8)	145 (30.9)	152 (54.0)	76 (75.0)				321 (44.8)	32 (41.9)	19 (34.9)
1040	1049	378 (44.4)	1 (2.0)	84 (36.5)	292 (51.5)	149 (31.8)	152 (54.0)	77 (76.0)				324 (45.2)	32 (41.9)	21 (38.4)
1050	1059	382 (45.0)	4 (7.4)	86 (37.3)	292 (51.5)	150 (32.0)	155 (55.4)	77 (76.0)				329 (45.9)	32 (41.9)	21 (38.4)
1060	1069	393 (46.3)	4 (7.4)	91 (39.6)	298 (52.5)	157 (33.5)	159 (56.8)	77 (76.0)		1 (100.0)		339 (47.3)	32 (41.9)	21 (38.4)
1070	1079	401 (47.2)	4 (7.4)	95 (41.3)	302 (53.2)	161 (34.3)	163 (58.2)	77 (76.0)				345 (48.1)	34 (44.4)	21 (38.4)
1080	1089	409 (48.1)	4 (7.4)	97 (42.2)	308 (54.2)	166 (35.6)	163 (58.2)	80 (78.0)				352 (49.1)	35 (45.7)	21 (38.4)
1090	1099	418 (49.1)	4 (7.4)	98 (42.6)	316 (55.6)	172 (36.8)	164 (58.6)	81 (79.9)				359 (50.0)	37 (48.2)	21 (38.4)
1100	1199	477 (56.1)	8 (14.7)	114 (49.3)	356 (62.6)	209 (44.7)	180 (64.1)	88 (86.7)				410 (57.2)	43 (55.8)	23 (42.1)
1200	1299	520 (61.2)	12 (23.9)	129 (55.9)	379 (66.7)	234 (50.0)	193 (68.8)	94 (91.8)				450 (62.8)	44 (57.1)	25 (45.7)
1300	1399	576 (67.8)	16 (30.8)	153 (66.4)	407 (71.7)	259 (55.3)	223 (79.4)	95 (92.8)				499 (69.6)	49 (63.5)	27 (49.4)
1400	1499	630 (74.0)	16 (30.8)	179 (77.4)	435 (76.6)	293 (62.5)	242 (86.4)	95 (92.8)				542 (75.6)	51 (66.1)	35 (64.4)
1500		851 (100.0)	51 (100.0)	231 (100.0)	568 (100.0)	468 (100.0)	281 (100.0)	102 (100.0)				717 (100.0)	77 (100.0)	55 (100.0)
月平均賃金額		210,603	302,160	207,050	203,785	235,832	181,459	174,972			178,248	206,054	221,343	255,614
時間当平均賃金額		1,365	1,936	1,291	1,344	1,540	1,186	1,055			1,061	1,335	1,424	1,687
月一人当たり労働時間数		154	154	158	153	154	151	165			168	154	153	158
第1・20分位数		900	1,050	891	900	900	910	891			1,061	900	891	900
第1・10分位数		900	1,150	900	900	900	910	895			1,061	900	900	900
第1・4分位数		920	1,301	923	910	915	920	923			1,061	920	900	919
中位数		1,103	1,734	1,202	1,034	1,301	1,020	923			1,061	1,100	1,100	1,400
四分位偏差係数		0.2785	0.2641	0.2260	0.2760	0.3607	0.2210	0.0683			0.0004	0.2611	0.3763	0.4309

【上段】

累積労働者数

【下段】

累積構成比

最低賃金引上げ額・率と影響率の関係表

件名		電機部会			
業種					
現行の最低賃金額		時間額		923円	
未満率		26.3%			
項番	時間額			影響率	未満労働者数
	引上げ額	引上げ率	引上げ後時間額		
1	1	0.11	924	30.90	263
2	2	0.22	925	30.90	263
3	3	0.33	926	30.90	263
4	4	0.43	927	31.37	267
5	5	0.54	928	31.37	267
6	6	0.65	929	31.37	267
7	7	0.76	930	31.37	267
8	8	0.87	931	32.67	278
9	9	0.98	932	32.67	278
10	10	1.08	933	32.67	278
11	11	1.19	934	32.67	278
12	12	1.30	935	33.02	281
13	13	1.41	936	33.02	281
14	14	1.52	937	33.02	281
15	15	1.63	938	33.02	281
16	16	1.73	939	33.02	281
17	17	1.84	940	33.49	285
18	18	1.95	941	33.49	285
19	19	2.06	942	33.73	287
20	20	2.17	943	33.73	287
21	21	2.28	944	34.20	291
22	22	2.38	945	34.20	291
23	23	2.49	946	34.31	292
24	24	2.60	947	34.78	296
25	25	2.71	948	34.78	296
26	26	2.82	949	34.78	296
27	27	2.93	950	34.78	296
28	28	3.03	951	35.14	299
29	29	3.14	952	35.14	299
30	30	3.25	953	35.14	299
31	31	3.36	954	35.14	299
32	32	3.47	955	35.14	299
33	33	3.58	956	35.14	299
34	34	3.68	957	35.14	299
35	35	3.79	958	35.14	299



最低賃金引上げ額・率と影響率の関係表

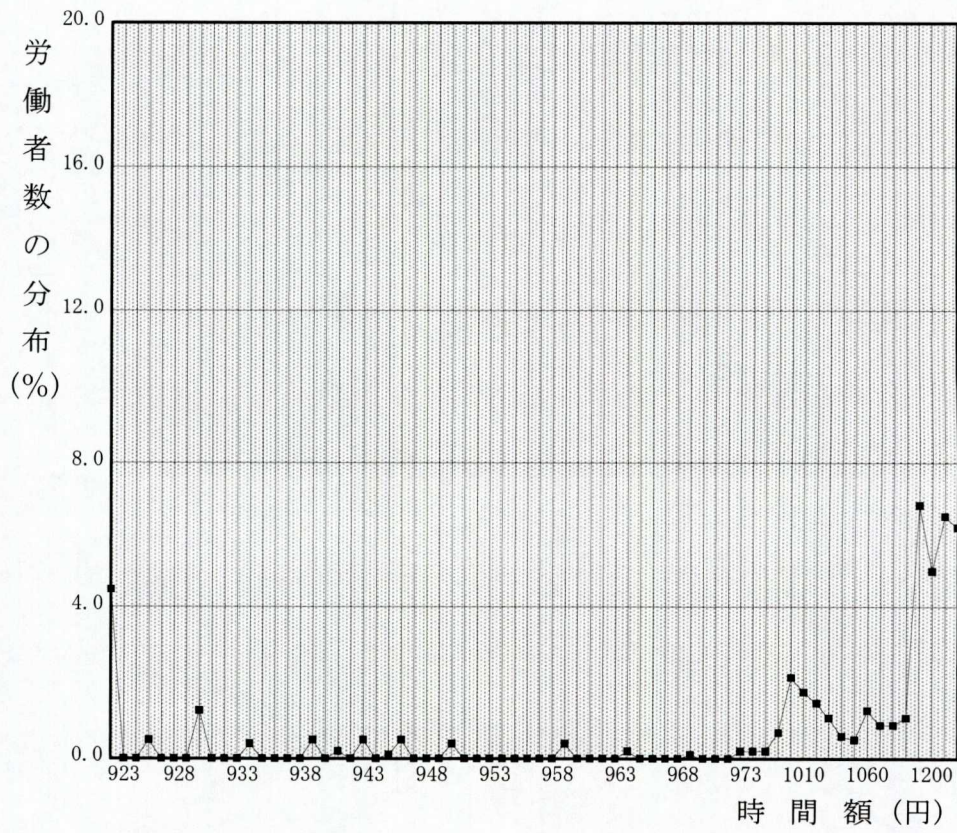
件名		電機部会			
業種					
現行の最低賃金額		時間額		923円	
未満率		26.3%			
項番	時間額			影響率	未満労働者数
	引上げ額	引上げ率	引上げ後時間額		
36	36	3.90	959	35.14	299
37	37	4.01	960	35.49	302
38	38	4.12	961	35.49	302
39	39	4.23	962	35.49	302
40	40	4.33	963	35.49	302
41	41	4.44	964	35.49	302
42	42	4.55	965	35.72	304
43	43	4.66	966	35.72	304
44	44	4.77	967	35.72	304
45	45	4.88	968	35.72	304
46	46	4.98	969	35.72	304
47	47	5.09	970	35.84	305
48	48	5.20	971	35.84	305
49	49	5.31	972	35.84	305
50	50	5.42	973	35.84	305
51	51	5.53	974	36.08	307
52	52	5.63	975	36.11	307
53	53	5.74	976	36.15	308
54	54	5.85	977	36.19	308
55	55	5.96	978	36.23	308
56	56	6.07	979	36.27	309
57	57	6.18	980	36.31	309
58	58	6.28	981	36.33	309
59	59	6.39	982	36.36	309
60	60	6.50	983	36.38	310
61	61	6.61	984	36.40	310
62	62	6.72	985	36.43	310
63	63	6.83	986	36.45	310
64	64	6.93	987	36.47	310
65	65	7.04	988	36.50	311
66	66	7.15	989	36.52	311
67	67	7.26	990	36.55	311
68	68	7.37	991	36.62	312
69	69	7.48	992	36.69	312
70	70	7.58	993	36.76	313

最低賃金引上げ額・率と影響率の関係表

件名	電機部会				
業種					
現行の最低賃金額	時間額			923円	
未満率	26.3%				
項番	時間額			影響率	未満労働者数
	引上げ額	引上げ率	引上げ後時間額		
71	71	7.69	994	36.83	313
72	72	7.80	995	36.90	314
73	73	7.91	996	36.97	315
74	74	8.02	997	37.04	315
75	75	8.13	998	37.11	316
76	76	8.23	999	37.18	316
77	77	8.34	1,000	37.25	317
78	78	8.45	1,001	37.47	319
79	79	8.56	1,002	37.70	321
80	80	8.67	1,003	37.92	323
81	81	8.78	1,004	38.14	325
82	82	8.88	1,005	38.37	327
83	83	8.99	1,006	38.59	328
84	84	9.10	1,007	38.81	330
85	85	9.21	1,008	39.04	332
86	86	9.32	1,009	39.26	334
87	87	9.43	1,010	39.48	336
88	88	9.53	1,011	39.66	338
89	89	9.64	1,012	39.84	339
90	90	9.75	1,013	40.01	341
91	91	9.86	1,014	40.19	342
92	92	9.97	1,015	40.36	344
93	93	10.08	1,016	40.54	345
94	94	10.18	1,017	40.72	347
95	95	10.29	1,018	40.89	348
96	96	10.40	1,019	41.07	350
97	97	10.51	1,020	41.25	351
98	98	10.62	1,021	41.40	352
99	99	10.73	1,022	41.55	354



# 時間額に対するその該当労働者数の分布





時間額に対するその該当労働者数の累積度数分布

