

業種別総括表及び最低賃金引上げ額・率と影響率の関係表

		ページ
No.1	地域別最低賃金適用産業総括表(合計表)	1
No.2	製造業総括表	4
No.3	卸・小売業総括表	7
No.4	飲食店・旅館業総括表	10
No.5	医療・福祉業総括表	13
No.6	サービス業総括表	16
No.7	最低賃金引上げ額・率と影響率の関係表	19
No.8	時間額に対するその該当労働者数の分布(グラフ)	21
No.9	時間額に対するその該当労働者数の累積度数分布(グラフ)	22

総括表（１）（産業・就業形態別の賃金額階級別、規模別、地域別、年齢別表）

05年

総括表（１）

産業：地質適用産業のみ

就業形態：（全て）

産別適用除外含む全労働者

時間当たり所定内賃金額 （3手当を除く）	合計	規模別			地域別				年齢別						
		1～9人	10～29人	30～99人	金沢	小松	七尾	穴水	17歳以下	18～19歳	20～54歳	55～59歳	60～64歳	65歳以上	
計	158,086	66,687	77,605	13,794	104,009	31,478	15,291	7,308	1,637	3,778	103,667	14,824	13,094	21,086	
円	3,308	2,186	921	200	1,608	1,095	331	275	47		1,878	279	247	856	
-	880	(2.1)	(3.3)	(1.2)	(1.5)	(3.5)	(2.2)	(3.8)	(2.9)		(1.8)	(1.9)	(1.9)	(4.1)	
881 -	881	3,330	2,186	944	200	1,630	1,095	331	275	47	1,901	279	247	856	
		(2.1)	(3.3)	(1.2)	(1.5)	(1.6)	(3.5)	(2.2)	(3.8)	(2.9)	(1.8)	(1.9)	(1.9)	(4.1)	
882 -	882	3,330	2,186	944	200	1,630	1,095	331	275	47	1,901	279	247	856	
		(2.1)	(3.3)	(1.2)	(1.5)	(1.6)	(3.5)	(2.2)	(3.8)	(2.9)	(1.8)	(1.9)	(1.9)	(4.1)	
883 -	883	3,330	2,186	944	200	1,630	1,095	331	275	47	1,901	279	247	856	
		(2.1)	(3.3)	(1.2)	(1.5)	(1.6)	(3.5)	(2.2)	(3.8)	(2.9)	(1.8)	(1.9)	(1.9)	(4.1)	
884 -	884	3,330	2,186	944	200	1,630	1,095	331	275	47	1,901	279	247	856	
		(2.1)	(3.3)	(1.2)	(1.5)	(1.6)	(3.5)	(2.2)	(3.8)	(2.9)	(1.8)	(1.9)	(1.9)	(4.1)	
885 -	885	3,356	2,186	944	225	1,630	1,120	331	275	47	1,926	279	247	856	
		(2.1)	(3.3)	(1.2)	(1.6)	(1.6)	(3.6)	(2.2)	(3.8)	(2.9)	(1.9)	(1.9)	(1.9)	(4.1)	
886 -	886	3,356	2,186	944	225	1,630	1,120	331	275	47	1,926	279	247	856	
		(2.1)	(3.3)	(1.2)	(1.6)	(1.6)	(3.6)	(2.2)	(3.8)	(2.9)	(1.9)	(1.9)	(1.9)	(4.1)	
887 -	887	3,421	2,252	944	225	1,695	1,120	331	275	47	1,959	279	247	889	
		(2.2)	(3.4)	(1.2)	(1.6)	(1.6)	(3.6)	(2.2)	(3.8)	(2.9)	(1.9)	(1.9)	(1.9)	(4.2)	
888 -	888	3,456	2,252	979	225	1,695	1,155	331	275	47	1,959	279	247	924	
		(2.2)	(3.4)	(1.3)	(1.6)	(1.6)	(3.7)	(2.2)	(3.8)	(2.9)	(1.9)	(1.9)	(1.9)	(4.4)	
889 -	889	3,477	2,272	979	225	1,695	1,176	331	275	47	1,979	279	247	924	
		(2.2)	(3.4)	(1.3)	(1.6)	(1.6)	(3.7)	(2.2)	(3.8)	(2.9)	(1.9)	(1.9)	(1.9)	(4.4)	
890 -	890	3,511	2,306	979	225	1,695	1,176	365	275	47	2,013	279	247	924	
		(2.2)	(3.5)	(1.3)	(1.6)	(1.6)	(3.7)	(2.4)	(3.8)	(2.9)	(1.9)	(1.9)	(1.9)	(4.4)	
891 -	891	8,021	3,655	3,850	516	4,769	1,671	907	673	321	318	4,529	470	561	1,821
		(5.1)	(5.5)	(5.0)	(3.7)	(4.6)	(5.3)	(5.9)	(9.2)	(19.6)	(8.4)	(4.4)	(3.2)	(4.3)	(8.6)
892 -	892	8,390	3,841	4,032	516	4,941	1,869	907	673	321	318	4,615	532	561	2,043
		(5.3)	(5.8)	(5.2)	(3.7)	(4.8)	(5.9)	(5.9)	(9.2)	(19.6)	(8.4)	(4.5)	(3.6)	(4.3)	(9.7)
893 -	893	8,607	3,945	4,145	516	4,988	1,869	967	783	321	318	4,773	532	561	2,103
		(5.4)	(5.9)	(5.3)	(3.7)	(4.8)	(5.9)	(6.3)	(10.7)	(19.6)	(8.4)	(4.6)	(3.6)	(4.3)	(10.0)
894 -	894	8,607	3,945	4,145	516	4,988	1,869	967	783	321	318	4,773	532	561	2,103
		(5.4)	(5.9)	(5.3)	(3.7)	(4.8)	(5.9)	(6.3)	(10.7)	(19.6)	(8.4)	(4.6)	(3.6)	(4.3)	(10.0)
895 -	895	9,348	4,114	4,567	667	5,186	2,077	1,215	870	321	318	5,003	564	872	2,269
		(5.9)	(6.2)	(5.9)	(4.8)	(5.0)	(6.6)	(7.9)	(11.9)	(19.6)	(8.4)	(4.8)	(3.8)	(6.7)	(10.8)
896 -	896	9,485	4,114	4,705	667	5,230	2,077	1,308	870	321	318	5,140	564	872	2,269
		(6.0)	(6.2)	(6.1)	(4.8)	(5.0)	(6.6)	(8.6)	(11.9)	(19.6)	(8.4)	(5.0)	(3.8)	(6.7)	(10.8)
897 -	897	9,485	4,114	4,705	667	5,230	2,077	1,308	870	321	318	5,140	564	872	2,269
		(6.0)	(6.2)	(6.1)	(4.8)	(5.0)	(6.6)	(8.6)	(11.9)	(19.6)	(8.4)	(5.0)	(3.8)	(6.7)	(10.8)
898 -	898	9,570	4,143	4,760	667	5,315	2,077	1,308	870	321	318	5,225	564	872	2,269
		(6.1)	(6.2)	(6.1)	(4.8)	(5.1)	(6.6)	(8.6)	(11.9)	(19.6)	(8.4)	(5.0)	(3.8)	(6.7)	(10.8)
899 -	899	9,603	4,176	4,760	667	5,348	2,077	1,308	870	321	318	5,258	564	872	2,269
		(6.1)	(6.3)	(6.1)	(4.8)	(5.1)	(6.6)	(8.6)	(11.9)	(19.6)	(8.4)	(5.1)	(3.8)	(6.7)	(10.8)
900 -	900	18,327	8,409	9,148	769	10,864	4,080	2,038	1,346	945	804	9,358	1,173	1,490	4,557
		(11.6)	(12.6)	(11.8)	(5.6)	(10.4)	(13.0)	(13.3)	(18.4)	(57.7)	(21.3)	(9.0)	(7.9)	(11.4)	(21.6)
901 -	901	18,416	8,409	9,237	769	10,953	4,080	2,038	1,346	945	804	9,447	1,173	1,490	4,557
		(11.6)	(12.6)	(11.9)	(5.6)	(10.5)	(13.0)	(13.3)	(18.4)	(57.7)	(21.3)	(9.1)	(7.9)	(11.4)	(21.6)
902 -	902	18,446	8,439	9,237	769	10,983	4,080	2,038	1,346	945	804	9,447	1,173	1,520	4,557
		(11.7)	(12.7)	(11.9)	(5.6)	(10.6)	(13.0)	(13.3)	(18.4)	(57.7)	(21.3)	(9.1)	(7.9)	(11.6)	(21.6)
903 -	903	18,725	8,561	9,383	781	11,174	4,155	2,038	1,358	945	842	9,612	1,199	1,545	4,582
		(11.8)	(12.8)	(12.1)	(5.7)	(10.7)	(13.2)	(13.3)	(18.6)	(57.7)	(22.3)	(9.3)	(8.1)	(11.8)	(21.7)
904 -	904	18,725	8,561	9,383	781	11,174	4,155	2,038	1,358	945	842	9,612	1,199	1,545	4,582
		(11.8)	(12.8)	(12.1)	(5.7)	(10.7)	(13.2)	(13.3)	(18.6)	(57.7)	(22.3)	(9.3)	(8.1)	(11.8)	(21.7)
905 -	905	18,799	8,603	9,415	781	11,207	4,155	2,080	1,358	945	842	9,666	1,199	1,545	4,604
		(11.9)	(12.9)	(12.1)	(5.7)	(10.8)	(13.2)	(13.6)	(18.6)	(57.7)	(22.3)	(9.3)	(8.1)	(11.8)	(21.8)
		19,274	8,937	9,530	806	11,528	4,226	2,163	1,358	945	863	9,956	1,243	1,604	4,663

906 -	906	(12.2)	(13.4)	(12.3)	(5.8)	(11.1)	(13.4)	(14.1)	(18.6)	(57.7)	(22.8)	(9.6)	(8.4)	(12.3)	(22.1)
		19,325	8,988	9,530	806	11,557	4,226	2,184	1,358	945	863	10,007	1,243	1,604	4,663
907 -	907	(12.2)	(13.5)	(12.3)	(5.8)	(11.1)	(13.4)	(14.3)	(18.6)	(57.7)	(22.8)	(9.7)	(8.4)	(12.3)	(22.1)
		19,384	9,021	9,530	832	11,583	4,226	2,184	1,391	945	889	10,040	1,243	1,604	4,663
908 -	908	(12.3)	(13.5)	(12.3)	(6.0)	(11.1)	(13.4)	(14.3)	(19.0)	(57.7)	(23.5)	(9.7)	(8.4)	(12.3)	(22.1)
		19,661	9,050	9,779	832	11,861	4,226	2,184	1,391	945	889	10,202	1,275	1,659	4,692
909 -	909	(12.4)	(13.6)	(12.6)	(6.0)	(11.4)	(13.4)	(14.3)	(19.0)	(57.7)	(23.5)	(9.8)	(8.6)	(12.7)	(22.3)
		20,708	9,559	10,292	857	12,469	4,392	2,335	1,513	1,013	910	10,687	1,395	1,756	4,948
910	910	(13.1)	(14.3)	(13.3)	(6.2)	(12.0)	(14.0)	(15.3)	(20.7)	(61.9)	(24.1)	(10.3)	(9.4)	(13.4)	(23.5)
		20,916	9,592	10,430	894	12,632	4,392	2,335	1,557	1,013	957	10,767	1,440	1,782	4,959
911	911	(13.2)	(14.4)	(13.4)	(6.5)	(12.1)	(14.0)	(15.3)	(21.3)	(61.9)	(25.3)	(10.4)	(9.7)	(13.6)	(23.5)
		20,916	9,592	10,430	894	12,632	4,392	2,335	1,557	1,013	957	10,767	1,440	1,782	4,959
912	912	(13.2)	(14.4)	(13.4)	(6.5)	(12.1)	(14.0)	(15.3)	(21.3)	(61.9)	(25.3)	(10.4)	(9.7)	(13.6)	(23.5)
		20,972	9,648	10,430	894	12,688	4,392	2,335	1,557	1,013	957	10,790	1,440	1,782	4,992
913	913	(13.3)	(14.5)	(13.4)	(6.5)	(12.2)	(14.0)	(15.3)	(21.3)	(61.9)	(25.3)	(10.4)	(9.7)	(13.6)	(23.7)
		21,038	9,681	10,462	894	12,720	4,392	2,335	1,591	1,013	957	10,822	1,440	1,815	4,992
914	914	(13.3)	(14.5)	(13.5)	(6.5)	(12.2)	(14.0)	(15.3)	(21.8)	(61.9)	(25.3)	(10.4)	(9.7)	(13.9)	(23.7)
		21,155	9,681	10,580	894	12,797	4,432	2,335	1,591	1,013	957	10,899	1,440	1,815	5,032
915	915	(13.4)	(14.5)	(13.6)	(6.5)	(12.3)	(14.1)	(15.3)	(21.8)	(61.9)	(25.3)	(10.5)	(9.7)	(13.9)	(23.9)
		21,199	9,725	10,580	894	12,841	4,432	2,335	1,591	1,013	957	10,943	1,440	1,815	5,032
916	916	(13.4)	(14.6)	(13.6)	(6.5)	(12.3)	(14.1)	(15.3)	(21.8)	(61.9)	(25.3)	(10.6)	(9.7)	(13.9)	(23.9)
		21,322	9,849	10,580	894	12,943	4,432	2,335	1,612	1,013	957	11,009	1,440	1,815	5,090
917	917	(13.5)	(14.8)	(13.6)	(6.5)	(12.4)	(14.1)	(15.3)	(22.1)	(61.9)	(25.3)	(10.6)	(9.7)	(13.9)	(24.1)
		21,366	9,893	10,580	894	12,987	4,432	2,335	1,612	1,013	957	11,053	1,440	1,815	5,090
918	918	(13.5)	(14.8)	(13.6)	(6.5)	(12.5)	(14.1)	(15.3)	(22.1)	(61.9)	(25.3)	(10.7)	(9.7)	(13.9)	(24.1)
		21,366	9,893	10,580	894	12,987	4,432	2,335	1,612	1,013	957	11,053	1,440	1,815	5,090
919	919	(13.5)	(14.8)	(13.6)	(6.5)	(12.5)	(14.1)	(15.3)	(22.1)	(61.9)	(25.3)	(10.7)	(9.7)	(13.9)	(24.1)
		24,295	10,984	12,125	1,187	15,147	4,686	2,820	1,642	1,028	957	12,485	1,923	2,273	5,629
920	920	(15.4)	(16.5)	(15.6)	(8.6)	(14.6)	(14.9)	(18.4)	(22.5)	(62.8)	(25.3)	(12.0)	(13.0)	(17.4)	(26.7)
		24,424	11,019	12,218	1,187	15,241	4,686	2,820	1,677	1,075	1,003	12,520	1,923	2,273	5,629
921	921	(15.4)	(16.5)	(15.7)	(8.6)	(14.7)	(14.9)	(18.4)	(22.9)	(65.7)	(26.6)	(12.1)	(13.0)	(17.4)	(26.7)
		24,554	11,052	12,218	1,284	15,241	4,769	2,820	1,724	1,075	1,003	12,618	1,956	2,273	5,629
922	922	(15.5)	(16.6)	(15.7)	(9.3)	(14.7)	(15.2)	(18.4)	(23.6)	(65.7)	(26.6)	(12.2)	(13.2)	(17.4)	(26.7)
		24,729	11,227	12,218	1,284	15,317	4,868	2,820	1,724	1,075	1,003	12,694	1,956	2,273	5,728
923	923	(15.6)	(16.8)	(15.7)	(9.3)	(14.7)	(15.5)	(18.4)	(23.6)	(65.7)	(26.6)	(12.2)	(13.2)	(17.4)	(27.2)
		24,776	11,227	12,265	1,284	15,364	4,868	2,820	1,724	1,075	1,003	12,741	1,956	2,273	5,728
924	924	(15.7)	(16.8)	(15.8)	(9.3)	(14.8)	(15.5)	(18.4)	(23.6)	(65.7)	(26.6)	(12.3)	(13.2)	(17.4)	(27.2)
		24,962	11,313	12,366	1,284	15,457	4,961	2,820	1,724	1,075	1,003	12,827	1,980	2,297	5,780
925	925	(15.8)	(17.0)	(15.9)	(9.3)	(14.9)	(15.8)	(18.4)	(23.6)	(65.7)	(26.6)	(12.4)	(13.4)	(17.5)	(27.4)
		24,994	11,313	12,398	1,284	15,489	4,961	2,820	1,724	1,075	1,003	12,859	1,980	2,297	5,780
926	926	(15.8)	(17.0)	(16.0)	(9.3)	(14.9)	(15.8)	(18.4)	(23.6)	(65.7)	(26.6)	(12.4)	(13.4)	(17.5)	(27.4)
		25,143	11,378	12,481	1,284	15,616	4,961	2,841	1,724	1,075	1,003	12,959	1,980	2,318	5,807
927	927	(15.9)	(17.1)	(16.1)	(9.3)	(15.0)	(15.8)	(18.6)	(23.6)	(65.7)	(26.6)	(12.5)	(13.4)	(17.7)	(27.5)
		25,143	11,378	12,481	1,284	15,616	4,961	2,841	1,724	1,075	1,003	12,959	1,980	2,318	5,807
928	928	(15.9)	(17.1)	(16.1)	(9.3)	(15.0)	(15.8)	(18.6)	(23.6)	(65.7)	(26.6)	(12.5)	(13.4)	(17.7)	(27.5)
		25,164	11,399	12,481	1,284	15,616	4,961	2,862	1,724	1,075	1,003	12,959	1,980	2,340	5,807
929	929	(15.9)	(17.1)	(16.1)	(9.3)	(15.0)	(15.8)	(18.7)	(23.6)	(65.7)	(26.6)	(12.5)	(13.4)	(17.9)	(27.5)
		26,888	11,980	13,516	1,392	16,554	5,499	3,091	1,744	1,239	1,003	13,929	2,072	2,484	6,160
930	930	(17.0)	(18.0)	(17.4)	(10.1)	(15.9)	(17.5)	(20.2)	(23.9)	(75.7)	(26.6)	(13.4)	(14.0)	(19.0)	(29.2)
		26,942	12,009	13,516	1,417	16,608	5,499	3,091	1,744	1,239	1,003	13,984	2,072	2,484	6,160
931	931	(17.0)	(18.0)	(17.4)	(10.3)	(16.0)	(17.5)	(20.2)	(23.9)	(75.7)	(26.6)	(13.5)	(14.0)	(19.0)	(29.2)
		27,065	12,106	13,516	1,442	16,705	5,524	3,091	1,744	1,239	1,003	14,076	2,072	2,514	6,160
932	932	(17.1)	(18.2)	(17.4)	(10.5)	(16.1)	(17.5)	(20.2)	(23.9)	(75.7)	(26.6)	(13.6)	(14.0)	(19.2)	(29.2)
		27,140	12,150	13,548	1,442	16,738	5,524	3,091	1,788	1,239	1,003	14,098	2,094	2,547	6,160
933	933	(17.2)	(18.2)	(17.5)	(10.5)	(16.1)	(17.5)	(20.2)	(24.5)	(75.7)	(26.6)	(13.6)	(14.1)	(19.4)	(29.2)
		27,223	12,207	13,548	1,467	16,796	5,549	3,091	1,788	1,239	1,003	14,152	2,094	2,547	6,189
934	934	(17.2)	(18.3)	(17.5)	(10.6)	(16.1)	(17.6)	(20.2)	(24.5)	(75.7)	(26.6)	(13.7)	(14.1)	(19.4)	(29.3)
		27,513	12,254	13,792	1,467	17,045	5,589	3,091	1,788	1,239	1,003	14,346	2,094	2,547	6,284
935	935	(17.4)	(18.4)	(17.8)	(10.6)	(16.4)	(17.8)	(20.2)	(24.5)	(75.7)	(26.6)	(13.8)	(14.1)	(19.4)	(29.8)

936	936	27,569 (17.4)	12,277 (18.4)	13,824 (17.8)	1,467 (10.6)	17,101 (16.4)	5,589 (17.8)	3,091 (20.2)	1,788 (24.5)	1,239 (75.7)	1,003 (26.6)	14,379 (13.9)	2,117 (14.3)	2,547 (19.4)	6,284 (29.8)
937	937	27,830 (17.6)	12,478 (18.7)	13,884 (17.9)	1,467 (10.6)	17,328 (16.7)	5,589 (17.8)	3,125 (20.4)	1,788 (24.5)	1,239 (75.7)	1,003 (26.6)	14,606 (14.1)	2,117 (14.3)	2,581 (19.7)	6,284 (29.8)
938	938	27,918 (17.7)	12,499 (18.7)	13,952 (18.0)	1,467 (10.6)	17,356 (16.7)	5,650 (17.9)	3,125 (20.4)	1,788 (24.5)	1,239 (75.7)	1,003 (26.6)	14,654 (14.1)	2,117 (14.3)	2,621 (20.0)	6,284 (29.8)
939	939	28,093 (17.8)	12,574 (18.9)	14,051 (18.1)	1,467 (10.6)	17,388 (16.7)	5,650 (17.9)	3,166 (20.7)	1,890 (25.9)	1,239 (75.7)	1,003 (26.6)	14,695 (14.2)	2,150 (14.5)	2,688 (20.5)	6,319 (30.0)
940	940	29,113 (18.4)	12,973 (19.5)	14,543 (18.7)	1,597 (11.6)	18,051 (17.4)	5,807 (18.4)	3,194 (20.9)	2,061 (28.2)	1,239 (75.7)	1,003 (26.6)	15,481 (14.9)	2,212 (14.9)	2,708 (20.7)	6,470 (30.7)
941	941	29,125 (18.4)	12,973 (19.5)	14,543 (18.7)	1,609 (11.7)	18,051 (17.4)	5,807 (18.4)	3,194 (20.9)	2,073 (28.4)	1,239 (75.7)	1,003 (26.6)	15,493 (14.9)	2,212 (14.9)	2,708 (20.7)	6,470 (30.7)
942	949	29,938 (18.9)	13,237 (19.8)	15,012 (19.3)	1,689 (12.2)	18,690 (18.0)	5,931 (18.8)	3,244 (21.2)	2,073 (28.4)	1,239 (75.7)	1,050 (27.8)	15,960 (15.4)	2,323 (15.7)	2,768 (21.1)	6,599 (31.3)
950	959	35,830 (22.7)	16,379 (24.6)	17,564 (22.6)	1,887 (13.7)	22,517 (21.6)	7,207 (22.9)	3,919 (25.6)	2,187 (29.9)	1,400 (85.5)	1,463 (38.7)	19,278 (18.6)	2,676 (18.1)	3,181 (24.3)	7,833 (37.1)
960	969	37,527 (23.7)	17,290 (25.9)	18,287 (23.6)	1,950 (14.1)	23,519 (22.6)	7,724 (24.5)	4,031 (26.4)	2,253 (30.8)	1,440 (88.0)	1,512 (40.0)	20,274 (19.6)	2,764 (18.6)	3,280 (25.0)	8,258 (39.2)
970	979	39,049 (24.7)	17,790 (26.7)	19,001 (24.5)	2,258 (16.4)	24,359 (23.4)	8,090 (25.7)	4,194 (27.4)	2,406 (32.9)	1,440 (88.0)	1,512 (40.0)	21,324 (20.6)	2,989 (20.2)	3,394 (25.9)	8,390 (39.8)
980	989	40,711 (25.8)	18,396 (27.6)	19,981 (25.7)	2,334 (16.9)	25,366 (24.4)	8,512 (27.0)	4,315 (28.2)	2,518 (34.4)	1,440 (88.0)	1,660 (43.9)	22,235 (21.4)	3,191 (21.5)	3,519 (26.9)	8,666 (41.1)
990	999	41,730 (26.4)	18,756 (28.1)	20,332 (26.2)	2,642 (19.2)	25,722 (24.7)	8,947 (28.4)	4,515 (29.5)	2,547 (34.9)	1,440 (88.0)	1,693 (44.8)	22,977 (22.2)	3,300 (22.3)	3,655 (27.9)	8,666 (41.1)
1000	1099	65,017 (41.1)	28,634 (42.9)	32,224 (41.5)	4,159 (30.2)	40,031 (38.5)	13,932 (44.3)	7,424 (48.6)	3,630 (49.7)	1,590 (97.1)	3,131 (82.9)	37,388 (36.1)	4,859 (32.8)	5,410 (41.3)	12,639 (59.9)
1100	1199	81,179 (51.4)	35,103 (52.6)	40,437 (52.1)	5,639 (40.9)	51,610 (49.6)	16,520 (52.5)	8,903 (58.2)	4,145 (56.7)	1,590 (97.1)	3,498 (92.6)	49,131 (47.4)	5,940 (40.1)	6,840 (52.2)	14,180 (67.3)
1200	1299	94,696 (59.9)	40,736 (61.1)	46,738 (60.2)	7,221 (52.4)	59,864 (57.6)	19,355 (61.5)	10,622 (69.5)	4,855 (66.4)	1,590 (97.1)	3,683 (97.5)	58,371 (56.3)	7,028 (47.4)	7,712 (58.9)	16,313 (77.4)
1300	1399	105,387 (66.7)	44,497 (66.7)	52,741 (68.0)	8,149 (59.1)	66,721 (64.1)	21,823 (69.3)	11,358 (74.3)	5,485 (75.1)	1,637 (100.0)	3,778 (100.0)	66,517 (64.2)	7,949 (53.6)	8,114 (62.0)	17,392 (82.5)
1400	1499	113,574 (71.8)	47,834 (71.7)	56,953 (73.4)	8,787 (63.7)	72,534 (69.7)	23,158 (73.6)	12,042 (78.8)	5,840 (79.9)			72,641 (70.1)	8,951 (60.4)	8,733 (66.7)	17,833 (84.6)
1500		158,086 (100.0)	66,687 (100.0)	77,605 (100.0)	13,794 (100.0)	104,009 (100.0)	31,478 (100.0)	15,291 (100.0)	7,308 (100.0)			103,667 (100.0)	14,824 (100.0)	13,094 (100.0)	21,086 (100.0)
月平均賃金額		190,736	192,438	182,057	231,335	193,516	187,228	184,367	179,610	44,580	68,180	204,275	224,656	193,458	131,938
時間当平均賃金額		1,355	1,365	1,332	1,442	1,388	1,313	1,258	1,274	926	1,001	1,383	1,507	1,345	1,215
月一人当たり労働時間数		137	136	133	160	135	137	144	144	49	67	145	143	140	111
第1・20分位数		891	891	892	900	896	891	891	891	891	891	898	900	895	891
第1・10分位数		900	900	900	930	900	900	900	893	891	900	910	920	900	895
第1・4分位数		980	960	980	1,040	1,000	971	950	939	900	911	1,000	1,000	968	920
中位数		1,184	1,166	1,177	1,271	1,200	1,166	1,108	1,100	900	1,000	1,218	1,335	1,160	1,002
四分位偏差係数		0.2433	0.2579	0.2295	0.2665	0.2432	0.2377	0.2127	0.2068	0.0172	0.0696	0.2374	0.3006	0.2890	0.1650

【上段】

累積労働者数

【下段】

累積構成比

総括表（１）（産業・就業形態別の賃金額階級別、規模別、地域別、年齢別表）

05年

総括表（１）

産業：製造業（特賃適用産業除く） 就業形態：（全て）

産別適用除外含む全労働者

時間当り所定内賃金額 （3手当を除く）	合計	規模別			地域別				年齢別					
		1～9人	10～29人	30～99人	金沢	小松	七尾	穴水	17歳以下	18～19歳	20～54歳	55～59歳	60～64歳	65歳以上
計	32,361	7,630	10,937	13,794	16,284	10,039	4,299	1,739		145	22,274	3,543	2,625	3,774
円	1,137	449	488	200	404	680	31	22			757	82	101	197
-	880	(3.5)	(5.9)	(4.5)	(1.5)	(2.5)	(6.8)	(0.7)	(1.3)		(3.4)	(2.3)	(3.9)	(5.2)
881 -	881	1,137 (3.5)	449 (5.9)	488 (4.5)	200 (1.5)	404 (2.5)	680 (6.8)	31 (0.7)	22 (1.3)		757 (3.4)	82 (2.3)	101 (3.9)	197 (5.2)
882 -	882	1,137 (3.5)	449 (5.9)	488 (4.5)	200 (1.5)	404 (2.5)	680 (6.8)	31 (0.7)	22 (1.3)		757 (3.4)	82 (2.3)	101 (3.9)	197 (5.2)
883 -	883	1,137 (3.5)	449 (5.9)	488 (4.5)	200 (1.5)	404 (2.5)	680 (6.8)	31 (0.7)	22 (1.3)		757 (3.4)	82 (2.3)	101 (3.9)	197 (5.2)
884 -	884	1,137 (3.5)	449 (5.9)	488 (4.5)	200 (1.5)	404 (2.5)	680 (6.8)	31 (0.7)	22 (1.3)		757 (3.4)	82 (2.3)	101 (3.9)	197 (5.2)
885 -	885	1,162 (3.6)	449 (5.9)	488 (4.5)	225 (1.6)	404 (2.5)	705 (7.0)	31 (0.7)	22 (1.3)		782 (3.5)	82 (2.3)	101 (3.9)	197 (5.2)
886 -	886	1,162 (3.6)	449 (5.9)	488 (4.5)	225 (1.6)	404 (2.5)	705 (7.0)	31 (0.7)	22 (1.3)		782 (3.5)	82 (2.3)	101 (3.9)	197 (5.2)
887 -	887	1,162 (3.6)	449 (5.9)	488 (4.5)	225 (1.6)	404 (2.5)	705 (7.0)	31 (0.7)	22 (1.3)		782 (3.5)	82 (2.3)	101 (3.9)	197 (5.2)
888 -	888	1,198 (3.7)	449 (5.9)	523 (4.8)	225 (1.6)	404 (2.5)	741 (7.4)	31 (0.7)	22 (1.3)		782 (3.5)	82 (2.3)	101 (3.9)	232 (6.1)
889 -	889	1,198 (3.7)	449 (5.9)	523 (4.8)	225 (1.6)	404 (2.5)	741 (7.4)	31 (0.7)	22 (1.3)		782 (3.5)	82 (2.3)	101 (3.9)	232 (6.1)
890 -	890	1,232 (3.8)	483 (6.3)	523 (4.8)	225 (1.6)	404 (2.5)	741 (7.4)	65 (1.5)	22 (1.3)		816 (3.7)	82 (2.3)	101 (3.9)	232 (6.1)
891 -	891	2,248 (6.9)	891 (11.7)	840 (7.7)	516 (3.7)	642 (3.9)	879 (8.8)	463 (10.8)	264 (15.2)	12 (8.1)	1,368 (6.1)	149 (4.2)	217 (8.2)	502 (13.3)
892 -	892	2,248 (6.9)	891 (11.7)	840 (7.7)	516 (3.7)	642 (3.9)	879 (8.8)	463 (10.8)	264 (15.2)	12 (8.1)	1,368 (6.1)	149 (4.2)	217 (8.2)	502 (13.3)
893 -	893	2,292 (7.1)	935 (12.3)	840 (7.7)	516 (3.7)	642 (3.9)	879 (8.8)	463 (10.8)	307 (17.7)	12 (8.1)	1,412 (6.3)	149 (4.2)	217 (8.2)	502 (13.3)
894 -	894	2,292 (7.1)	935 (12.3)	840 (7.7)	516 (3.7)	642 (3.9)	879 (8.8)	463 (10.8)	307 (17.7)	12 (8.1)	1,412 (6.3)	149 (4.2)	217 (8.2)	502 (13.3)
895 -	895	2,779 (8.6)	1,022 (13.4)	1,090 (10.0)	667 (4.8)	700 (4.3)	1,004 (10.0)	680 (15.8)	394 (22.7)	12 (8.1)	1,565 (7.0)	182 (5.1)	434 (16.5)	586 (15.5)
896 -	896	2,872 (8.9)	1,022 (13.4)	1,183 (10.8)	667 (4.8)	700 (4.3)	1,004 (10.0)	773 (18.0)	394 (22.7)	12 (8.1)	1,658 (7.4)	182 (5.1)	434 (16.5)	586 (15.5)
897 -	897	2,872 (8.9)	1,022 (13.4)	1,183 (10.8)	667 (4.8)	700 (4.3)	1,004 (10.0)	773 (18.0)	394 (22.7)	12 (8.1)	1,658 (7.4)	182 (5.1)	434 (16.5)	586 (15.5)
898 -	898	2,872 (8.9)	1,022 (13.4)	1,183 (10.8)	667 (4.8)	700 (4.3)	1,004 (10.0)	773 (18.0)	394 (22.7)	12 (8.1)	1,658 (7.4)	182 (5.1)	434 (16.5)	586 (15.5)
899 -	899	2,872 (8.9)	1,022 (13.4)	1,183 (10.8)	667 (4.8)	700 (4.3)	1,004 (10.0)	773 (18.0)	394 (22.7)	12 (8.1)	1,658 (7.4)	182 (5.1)	434 (16.5)	586 (15.5)
900 -	900	4,160 (12.9)	1,590 (20.8)	1,801 (16.5)	769 (5.6)	1,063 (6.5)	1,423 (14.2)	1,169 (27.2)	505 (29.1)	12 (8.1)	2,352 (10.6)	284 (8.0)	497 (18.9)	1,015 (26.9)
901 -	901	4,160 (12.9)	1,590 (20.8)	1,801 (16.5)	769 (5.6)	1,063 (6.5)	1,423 (14.2)	1,169 (27.2)	505 (29.1)	12 (8.1)	2,352 (10.6)	284 (8.0)	497 (18.9)	1,015 (26.9)
902 -	902	4,160 (12.9)	1,590 (20.8)	1,801 (16.5)	769 (5.6)	1,063 (6.5)	1,423 (14.2)	1,169 (27.2)	505 (29.1)	12 (8.1)	2,352 (10.6)	284 (8.0)	497 (18.9)	1,015 (26.9)
903 -	903	4,204 (13.0)	1,590 (20.8)	1,833 (16.8)	781 (5.7)	1,095 (6.7)	1,423 (14.2)	1,169 (27.2)	517 (29.7)	12 (8.1)	2,396 (10.8)	284 (8.0)	497 (18.9)	1,015 (26.9)
904 -	904	4,204 (13.0)	1,590 (20.8)	1,833 (16.8)	781 (5.7)	1,095 (6.7)	1,423 (14.2)	1,169 (27.2)	517 (29.7)	12 (8.1)	2,396 (10.8)	284 (8.0)	497 (18.9)	1,015 (26.9)
905 -	905	4,237 (13.1)	1,590 (20.8)	1,865 (17.1)	781 (5.7)	1,127 (6.9)	1,423 (14.2)	1,169 (27.2)	517 (29.7)	12 (8.1)	2,428 (10.9)	284 (8.0)	497 (18.9)	1,015 (26.9)
		4,434	1,692	1,936	806	1,254	1,494	1,169	517	12	2,567	284	556	1,015

906 -	906	(13.7)	(22.2)	(17.7)	(5.8)	(7.7)	(14.9)	(27.2)	(29.7)		(8.1)	(11.5)	(8.0)	(21.2)	(26.9)
		4,434	1,692	1,936	806	1,254	1,494	1,169	517		12	2,567	284	556	1,015
907 -	907	(13.7)	(22.2)	(17.7)	(5.8)	(7.7)	(14.9)	(27.2)	(29.7)		(8.1)	(11.5)	(8.0)	(21.2)	(26.9)
		4,460	1,692	1,936	832	1,280	1,494	1,169	517		37	2,567	284	556	1,015
908 -	908	(13.8)	(22.2)	(17.7)	(6.0)	(7.9)	(14.9)	(27.2)	(29.7)		(25.7)	(11.5)	(8.0)	(21.2)	(26.9)
		4,686	1,692	2,163	832	1,506	1,494	1,169	517		37	2,729	317	589	1,015
909 -	909	(14.5)	(22.2)	(19.8)	(6.0)	(9.2)	(14.9)	(27.2)	(29.7)		(25.7)	(12.2)	(8.9)	(22.4)	(26.9)
		5,015	1,769	2,389	857	1,733	1,575	1,169	539		37	2,913	317	653	1,094
910	910	(15.5)	(23.2)	(21.8)	(6.2)	(10.6)	(15.7)	(27.2)	(31.0)		(25.7)	(13.1)	(8.9)	(24.9)	(29.0)
		5,052	1,769	2,389	894	1,758	1,575	1,169	551		37	2,913	317	679	1,106
911	911	(15.6)	(23.2)	(21.8)	(6.5)	(10.8)	(15.7)	(27.2)	(31.7)		(25.7)	(13.1)	(8.9)	(25.9)	(29.3)
		5,052	1,769	2,389	894	1,758	1,575	1,169	551		37	2,913	317	679	1,106
912	912	(15.6)	(23.2)	(21.8)	(6.5)	(10.8)	(15.7)	(27.2)	(31.7)		(25.7)	(13.1)	(8.9)	(25.9)	(29.3)
		5,052	1,769	2,389	894	1,758	1,575	1,169	551		37	2,913	317	679	1,106
913	913	(15.6)	(23.2)	(21.8)	(6.5)	(10.8)	(15.7)	(27.2)	(31.7)		(25.7)	(13.1)	(8.9)	(25.9)	(29.3)
		5,084	1,769	2,421	894	1,790	1,575	1,169	551		37	2,946	317	679	1,106
914	914	(15.7)	(23.2)	(22.1)	(6.5)	(11.0)	(15.7)	(27.2)	(31.7)		(25.7)	(13.2)	(8.9)	(25.9)	(29.3)
		5,117	1,769	2,454	894	1,823	1,575	1,169	551		37	2,978	317	679	1,106
915	915	(15.8)	(23.2)	(22.4)	(6.5)	(11.2)	(15.7)	(27.2)	(31.7)		(25.7)	(13.4)	(8.9)	(25.9)	(29.3)
		5,117	1,769	2,454	894	1,823	1,575	1,169	551		37	2,978	317	679	1,106
916	916	(15.8)	(23.2)	(22.4)	(6.5)	(11.2)	(15.7)	(27.2)	(31.7)		(25.7)	(13.4)	(8.9)	(25.9)	(29.3)
		5,139	1,791	2,454	894	1,823	1,575	1,169	572		37	3,000	317	679	1,106
917	917	(15.9)	(23.5)	(22.4)	(6.5)	(11.2)	(15.7)	(27.2)	(32.9)		(25.7)	(13.5)	(8.9)	(25.9)	(29.3)
		5,139	1,791	2,454	894	1,823	1,575	1,169	572		37	3,000	317	679	1,106
918	918	(15.9)	(23.5)	(22.4)	(6.5)	(11.2)	(15.7)	(27.2)	(32.9)		(25.7)	(13.5)	(8.9)	(25.9)	(29.3)
		5,139	1,791	2,454	894	1,823	1,575	1,169	572		37	3,000	317	679	1,106
919	919	(15.9)	(23.5)	(22.4)	(6.5)	(11.2)	(15.7)	(27.2)	(32.9)		(25.7)	(13.5)	(8.9)	(25.9)	(29.3)
		5,890	2,015	2,688	1,187	2,089	1,761	1,467	572		37	3,301	525	784	1,242
920	920	(18.2)	(26.4)	(24.6)	(8.6)	(12.8)	(17.5)	(34.1)	(32.9)		(25.7)	(14.8)	(14.8)	(29.9)	(32.9)
		5,890	2,015	2,688	1,187	2,089	1,761	1,467	572		37	3,301	525	784	1,242
921	921	(18.2)	(26.4)	(24.6)	(8.6)	(12.8)	(17.5)	(34.1)	(32.9)		(25.7)	(14.8)	(14.8)	(29.9)	(32.9)
		5,987	2,015	2,688	1,284	2,089	1,811	1,467	619		37	3,398	525	784	1,242
922	922	(18.5)	(26.4)	(24.6)	(9.3)	(12.8)	(18.0)	(34.1)	(35.6)		(25.7)	(15.3)	(14.8)	(29.9)	(32.9)
		5,987	2,015	2,688	1,284	2,089	1,811	1,467	619		37	3,398	525	784	1,242
923	923	(18.5)	(26.4)	(24.6)	(9.3)	(12.8)	(18.0)	(34.1)	(35.6)		(25.7)	(15.3)	(14.8)	(29.9)	(32.9)
		5,987	2,015	2,688	1,284	2,089	1,811	1,467	619		37	3,398	525	784	1,242
924	924	(18.5)	(26.4)	(24.6)	(9.3)	(12.8)	(18.0)	(34.1)	(35.6)		(25.7)	(15.3)	(14.8)	(29.9)	(32.9)
		5,987	2,015	2,688	1,284	2,089	1,811	1,467	619		37	3,398	525	784	1,242
925	925	(18.5)	(26.4)	(24.6)	(9.3)	(12.8)	(18.0)	(34.1)	(35.6)		(25.7)	(15.3)	(14.8)	(29.9)	(32.9)
		6,019	2,015	2,720	1,284	2,121	1,811	1,467	619		37	3,431	525	784	1,242
926	926	(18.6)	(26.4)	(24.9)	(9.3)	(13.0)	(18.0)	(34.1)	(35.6)		(25.7)	(15.4)	(14.8)	(29.9)	(32.9)
		6,019	2,015	2,720	1,284	2,121	1,811	1,467	619		37	3,431	525	784	1,242
927	927	(18.6)	(26.4)	(24.9)	(9.3)	(13.0)	(18.0)	(34.1)	(35.6)		(25.7)	(15.4)	(14.8)	(29.9)	(32.9)
		6,019	2,015	2,720	1,284	2,121	1,811	1,467	619		37	3,431	525	784	1,242
928	928	(18.6)	(26.4)	(24.9)	(9.3)	(13.0)	(18.0)	(34.1)	(35.6)		(25.7)	(15.4)	(14.8)	(29.9)	(32.9)
		6,019	2,015	2,720	1,284	2,121	1,811	1,467	619		37	3,431	525	784	1,242
929	929	(18.6)	(26.4)	(24.9)	(9.3)	(13.0)	(18.0)	(34.1)	(35.6)		(25.7)	(15.4)	(14.8)	(29.9)	(32.9)
		6,247	2,071	2,785	1,392	2,237	1,867	1,525	619		37	3,526	577	809	1,298
930	930	(19.3)	(27.1)	(25.5)	(10.1)	(13.7)	(18.6)	(35.5)	(35.6)		(25.7)	(15.8)	(16.3)	(30.8)	(34.4)
		6,273	2,071	2,785	1,417	2,262	1,867	1,525	619		37	3,551	577	809	1,298
931	931	(19.4)	(27.1)	(25.5)	(10.3)	(13.9)	(18.6)	(35.5)	(35.6)		(25.7)	(15.9)	(16.3)	(30.8)	(34.4)
		6,366	2,138	2,785	1,442	2,330	1,892	1,525	619		37	3,644	577	809	1,298
932	932	(19.7)	(28.0)	(25.5)	(10.5)	(14.3)	(18.8)	(35.5)	(35.6)		(25.7)	(16.4)	(16.3)	(30.8)	(34.4)
		6,441	2,182	2,817	1,442	2,362	1,892	1,525	663		37	3,666	599	841	1,298
933	933	(19.9)	(28.6)	(25.8)	(10.5)	(14.5)	(18.8)	(35.5)	(38.1)		(25.7)	(16.5)	(16.9)	(32.1)	(34.4)
		6,467	2,182	2,817	1,467	2,362	1,917	1,525	663		37	3,691	599	841	1,298
934	934	(20.0)	(28.6)	(25.8)	(10.6)	(14.5)	(19.1)	(35.5)	(38.1)		(25.7)	(16.6)	(16.9)	(32.1)	(34.4)
		6,467	2,182	2,817	1,467	2,362	1,917	1,525	663		37	3,691	599	841	1,298
935	935	(20.0)	(28.6)	(25.8)	(10.6)	(14.5)	(19.1)	(35.5)	(38.1)		(25.7)	(16.6)	(16.9)	(32.1)	(34.4)

936	936	6,499 (20.1)	2,182 (28.6)	2,850 (26.1)	1,467 (10.6)	2,394 (14.7)	1,917 (19.1)	1,525 (35.5)	663 (38.1)		37 (25.7)	3,723 (16.7)	599 (16.9)	841 (32.1)	1,298 (34.4)
937	937	6,565 (20.3)	2,216 (29.0)	2,882 (26.4)	1,467 (10.6)	2,427 (14.9)	1,917 (19.1)	1,559 (36.3)	663 (38.1)		37 (25.7)	3,755 (16.9)	599 (16.9)	876 (33.4)	1,298 (34.4)
938	938	6,565 (20.3)	2,216 (29.0)	2,882 (26.4)	1,467 (10.6)	2,427 (14.9)	1,917 (19.1)	1,559 (36.3)	663 (38.1)		37 (25.7)	3,755 (16.9)	599 (16.9)	876 (33.4)	1,298 (34.4)
939	939	6,598 (20.4)	2,216 (29.0)	2,914 (26.6)	1,467 (10.6)	2,459 (15.1)	1,917 (19.1)	1,559 (36.3)	663 (38.1)		37 (25.7)	3,755 (16.9)	631 (17.8)	876 (33.4)	1,298 (34.4)
940	940	6,792 (21.0)	2,216 (29.0)	2,979 (27.2)	1,597 (11.6)	2,600 (16.0)	1,942 (19.3)	1,587 (36.9)	663 (38.1)		37 (25.7)	3,899 (17.5)	673 (19.0)	876 (33.4)	1,308 (34.7)
941	941	6,804 (21.0)	2,216 (29.0)	2,979 (27.2)	1,609 (11.7)	2,600 (16.0)	1,942 (19.3)	1,587 (36.9)	675 (38.8)		37 (25.7)	3,910 (17.6)	673 (19.0)	876 (33.4)	1,308 (34.7)
942	949	7,204 (22.3)	2,277 (29.8)	3,238 (29.6)	1,689 (12.2)	2,944 (18.1)	1,970 (19.6)	1,616 (37.6)	675 (38.8)		37 (25.7)	4,183 (18.8)	733 (20.7)	901 (34.3)	1,350 (35.8)
950	959	7,945 (24.5)	2,496 (32.7)	3,561 (32.6)	1,887 (13.7)	3,397 (20.9)	2,078 (20.7)	1,784 (41.5)	687 (39.5)		37 (25.7)	4,847 (21.8)	745 (21.0)	903 (34.4)	1,412 (37.4)
960	969	8,328 (25.7)	2,557 (33.5)	3,820 (34.9)	1,950 (14.1)	3,743 (23.0)	2,106 (21.0)	1,793 (41.7)	687 (39.5)		37 (25.7)	5,067 (22.7)	809 (22.8)	970 (36.9)	1,445 (38.3)
970	979	8,704 (26.9)	2,625 (34.4)	3,820 (34.9)	2,258 (16.4)	3,881 (23.8)	2,281 (22.7)	1,856 (43.2)	687 (39.5)		37 (25.7)	5,304 (23.8)	894 (25.2)	979 (37.3)	1,489 (39.5)
980	989	8,973 (27.7)	2,754 (36.1)	3,885 (35.5)	2,334 (16.9)	4,098 (25.2)	2,333 (23.2)	1,856 (43.2)	687 (39.5)		37 (25.7)	5,457 (24.5)	953 (26.9)	1,011 (38.5)	1,515 (40.1)
990	999	9,411 (29.1)	2,884 (37.8)	3,885 (35.5)	2,642 (19.2)	4,250 (26.1)	2,561 (25.5)	1,913 (44.5)	687 (39.5)		37 (25.7)	5,835 (26.2)	978 (27.6)	1,046 (39.9)	1,515 (40.1)
1000	1099	13,665 (42.2)	3,855 (50.5)	5,650 (51.7)	4,159 (30.2)	6,608 (40.6)	3,602 (35.9)	2,582 (60.1)	873 (50.2)		87 (60.2)	8,392 (37.7)	1,494 (42.2)	1,352 (51.5)	2,339 (62.0)
1100	1199	16,491 (51.0)	4,475 (58.6)	6,377 (58.3)	5,639 (40.9)	8,239 (50.6)	4,495 (44.8)	2,840 (66.1)	916 (52.7)		87 (60.2)	10,465 (47.0)	1,702 (48.0)	1,652 (62.9)	2,585 (68.5)
1200	1299	19,275 (59.6)	5,012 (65.7)	7,042 (64.4)	7,221 (52.4)	9,483 (58.2)	5,550 (55.3)	3,192 (74.2)	1,051 (60.4)		87 (60.2)	12,522 (56.2)	1,951 (55.1)	1,854 (70.6)	2,861 (75.8)
1300	1399	21,583 (66.7)	5,622 (73.7)	7,812 (71.4)	8,149 (59.1)	10,507 (64.5)	6,256 (62.3)	3,518 (81.8)	1,302 (74.9)		145 (100.0)	14,203 (63.8)	2,076 (58.6)	1,960 (74.7)	3,198 (84.7)
1400	1499	23,021 (71.1)	5,874 (77.0)	8,360 (76.4)	8,787 (63.7)	11,201 (68.8)	6,682 (66.6)	3,676 (85.5)	1,462 (84.1)			15,142 (68.0)	2,258 (63.7)	2,151 (81.9)	3,324 (88.1)
1500		32,361 (100.0)	7,630 (100.0)	10,937 (100.0)	13,794 (100.0)	16,284 (100.0)	10,039 (100.0)	4,299 (100.0)	1,739 (100.0)			22,274 (100.0)	3,543 (100.0)	2,625 (100.0)	3,774 (100.0)
月平均賃金額		209,018	183,796	198,466	231,335	212,105	220,405	177,875	191,355		192,744	219,279	224,435	187,957	149,258
時間当平均賃金額		1,333	1,255	1,250	1,442	1,374	1,359	1,170	1,209		1,139	1,363	1,439	1,220	1,143
月一人当たり労働時間数		155	142	157	160	152	161	149	158		171	160	151	151	128
第1・20分位数		891	870	891	900	900	875	891	891		891	891	895	891	870
第1・10分位数		900	891	896	930	910	895	891	891		908	900	920	895	891
第1・4分位数		965	920	930	1,040	986	996	900	900		908	994	977	911	900
中位数		1,189	1,098	1,082	1,271	1,187	1,244	1,029	1,071		1,097	1,225	1,220	1,080	1,000
四分位偏差係数		0.2650	0.2354	0.2425	0.2665	0.2766	0.2640	0.2101	0.2545		0.1876	0.2599	0.3363	0.2268	0.1914

【上段】

累積労働者数

【下段】

累積構成比

総括表（1）（産業・就業形態別の賃金額階級別、規模別、地域別、年齢別表）

05年

総括表（1）

産業：卸売業、小売業

就業形態：（全て）

産別適用除外含む全労働者

時間当り所定内賃金額 （3手当を除く）	合計	規模別			地域別				年齢別					
		1～9人	10～29人	30～99人	金沢	小松	七尾	穴水	17歳以下	18～19歳	20～54歳	55～59歳	60～64歳	65歳以上
計	53,625	25,092	28,533		37,315	9,154	4,659	2,497	689	1,154	36,968	4,698	4,467	5,648
円	883	477	406		537	155	85	106	47		571	82	74	109
-	880	(1.6)	(1.9)	(1.4)	(1.4)	(1.7)	(1.8)	(4.3)	(6.8)		(1.5)	(1.7)	(1.7)	(1.9)
881 -	881	(1.6)	(1.9)	(1.4)	(1.4)	(1.7)	(1.8)	(4.3)	(6.8)		(1.5)	(1.7)	(1.7)	(1.9)
882 -	882	(1.6)	(1.9)	(1.4)	(1.4)	(1.7)	(1.8)	(4.3)	(6.8)		(1.5)	(1.7)	(1.7)	(1.9)
883 -	883	(1.6)	(1.9)	(1.4)	(1.4)	(1.7)	(1.8)	(4.3)	(6.8)		(1.5)	(1.7)	(1.7)	(1.9)
884 -	884	(1.6)	(1.9)	(1.4)	(1.4)	(1.7)	(1.8)	(4.3)	(6.8)		(1.5)	(1.7)	(1.7)	(1.9)
885 -	885	(1.6)	(1.9)	(1.4)	(1.4)	(1.7)	(1.8)	(4.3)	(6.8)		(1.5)	(1.7)	(1.7)	(1.9)
886 -	886	(1.6)	(1.9)	(1.4)	(1.4)	(1.7)	(1.8)	(4.3)	(6.8)		(1.5)	(1.7)	(1.7)	(1.9)
887 -	887	(1.8)	(2.2)	(1.4)	(1.6)	(1.7)	(1.8)	(4.3)	(6.8)		(1.6)	(1.7)	(1.7)	(2.5)
888 -	888	(1.8)	(2.2)	(1.4)	(1.6)	(1.7)	(1.8)	(4.3)	(6.8)		(1.6)	(1.7)	(1.7)	(2.5)
889 -	889	(1.8)	(2.2)	(1.4)	(1.6)	(1.9)	(1.8)	(4.3)	(6.8)		(1.7)	(1.7)	(1.7)	(2.5)
890 -	890	(1.8)	(2.2)	(1.4)	(1.6)	(1.9)	(1.8)	(4.3)	(6.8)		(1.7)	(1.7)	(1.7)	(2.5)
891 -	891	(5.0)	(3.0)	(6.8)	(5.2)	(5.0)	(3.6)	(5.7)	(40.7)	(21.8)	(4.9)	(2.5)	(1.7)	(3.1)
892 -	892	(5.1)	(3.1)	(6.8)	(5.3)	(5.0)	(3.6)	(5.7)	(40.7)	(21.8)	(5.0)	(2.5)	(1.7)	(3.1)
893 -	893	(5.3)	(3.1)	(7.2)	(5.4)	(5.0)	(3.6)	(8.3)	(40.7)	(21.8)	(5.3)	(2.5)	(1.7)	(3.1)
894 -	894	(5.3)	(3.1)	(7.2)	(5.4)	(5.0)	(3.6)	(8.3)	(40.7)	(21.8)	(5.3)	(2.5)	(1.7)	(3.1)
895 -	895	(5.7)	(3.2)	(7.8)	(5.8)	(5.6)	(3.6)	(8.3)	(40.7)	(21.8)	(5.4)	(2.5)	(3.8)	(4.0)
896 -	896	(5.7)	(3.2)	(7.8)	(5.8)	(5.6)	(3.6)	(8.3)	(40.7)	(21.8)	(5.4)	(2.5)	(3.8)	(4.0)
897 -	897	(5.7)	(3.2)	(7.8)	(5.8)	(5.6)	(3.6)	(8.3)	(40.7)	(21.8)	(5.4)	(2.5)	(3.8)	(4.0)
898 -	898	(5.7)	(3.2)	(7.8)	(5.8)	(5.6)	(3.6)	(8.3)	(40.7)	(21.8)	(5.4)	(2.5)	(3.8)	(4.0)
899 -	899	(5.7)	(3.3)	(7.8)	(5.8)	(5.6)	(3.6)	(8.3)	(40.7)	(21.8)	(5.5)	(2.5)	(3.8)	(4.0)
900 -	900	(12.5)	(9.8)	(14.9)	(12.5)	(14.9)	(5.8)	(16.9)	(71.8)	(44.7)	(10.5)	(8.2)	(10.1)	(17.2)
901 -	901	(12.5)	(9.8)	(14.9)	(12.5)	(14.9)	(5.8)	(16.9)	(71.8)	(44.7)	(10.5)	(8.2)	(10.1)	(17.2)
902 -	902	(12.5)	(9.8)	(14.9)	(12.5)	(14.9)	(5.8)	(16.9)	(71.8)	(44.7)	(10.5)	(8.2)	(10.1)	(17.2)
903 -	903	(12.5)	(9.8)	(14.9)	(12.5)	(14.9)	(5.8)	(16.9)	(71.8)	(44.7)	(10.5)	(8.2)	(10.1)	(17.2)
904 -	904	(12.5)	(9.8)	(14.9)	(12.5)	(14.9)	(5.8)	(16.9)	(71.8)	(44.7)	(10.5)	(8.2)	(10.1)	(17.2)
905 -	905	(12.6)	(9.9)	(14.9)	(12.5)	(14.9)	(6.7)	(16.9)	(71.8)	(44.7)	(10.6)	(8.2)	(10.1)	(17.5)
	6,798	2,538	4,260		4,660	1,363	354	421	495	537	3,941	384	450	991

906 -	906	(12.7)	(10.1)	(14.9)		(12.5)	(14.9)	(7.6)	(16.9)	(71.8)	(46.5)	(10.7)	(8.2)	(10.1)	(17.5)
		6,819	2,559	4,260		4,660	1,363	375	421	495	537	3,962	384	450	991
907 -	907	(12.7)	(10.2)	(14.9)		(12.5)	(14.9)	(8.1)	(16.9)	(71.8)	(46.5)	(10.7)	(8.2)	(10.1)	(17.5)
		6,819	2,559	4,260		4,660	1,363	375	421	495	537	3,962	384	450	991
908 -	908	(12.7)	(10.2)	(14.9)		(12.5)	(14.9)	(8.1)	(16.9)	(71.8)	(46.5)	(10.7)	(8.2)	(10.1)	(17.5)
		6,819	2,559	4,260		4,660	1,363	375	421	495	537	3,962	384	450	991
909 -	909	(12.7)	(10.2)	(14.9)		(12.5)	(14.9)	(8.1)	(16.9)	(71.8)	(46.5)	(10.7)	(8.2)	(10.1)	(17.5)
		6,819	2,559	4,260		4,660	1,363	375	421	495	537	3,962	384	450	991
910	910	7,377	2,911	4,467		4,963	1,424	503	488	563	558	4,211	504	483	1,059
		(13.8)	(11.6)	(15.7)		(13.3)	(15.6)	(10.8)	(19.5)	(81.7)	(48.3)	(11.4)	(10.7)	(10.8)	(18.7)
911	911	7,471	2,911	4,560		5,057	1,424	503	488	563	605	4,258	504	483	1,059
		(13.9)	(11.6)	(16.0)		(13.6)	(15.6)	(10.8)	(19.5)	(81.7)	(52.4)	(11.5)	(10.7)	(10.8)	(18.7)
912	912	7,471	2,911	4,560		5,057	1,424	503	488	563	605	4,258	504	483	1,059
		(13.9)	(11.6)	(16.0)		(13.6)	(15.6)	(10.8)	(19.5)	(81.7)	(52.4)	(11.5)	(10.7)	(10.8)	(18.7)
913	913	7,503	2,943	4,560		5,089	1,424	503	488	563	605	4,258	504	483	1,091
		(14.0)	(11.7)	(16.0)		(13.6)	(15.6)	(10.8)	(19.5)	(81.7)	(52.4)	(11.5)	(10.7)	(10.8)	(19.3)
914	914	7,503	2,943	4,560		5,089	1,424	503	488	563	605	4,258	504	483	1,091
		(14.0)	(11.7)	(16.0)		(13.6)	(15.6)	(10.8)	(19.5)	(81.7)	(52.4)	(11.5)	(10.7)	(10.8)	(19.3)
915	915	7,503	2,943	4,560		5,089	1,424	503	488	563	605	4,258	504	483	1,091
		(14.0)	(11.7)	(16.0)		(13.6)	(15.6)	(10.8)	(19.5)	(81.7)	(52.4)	(11.5)	(10.7)	(10.8)	(19.3)
916	916	7,503	2,943	4,560		5,089	1,424	503	488	563	605	4,258	504	483	1,091
		(14.0)	(11.7)	(16.0)		(13.6)	(15.6)	(10.8)	(19.5)	(81.7)	(52.4)	(11.5)	(10.7)	(10.8)	(19.3)
917	917	7,503	2,943	4,560		5,089	1,424	503	488	563	605	4,258	504	483	1,091
		(14.0)	(11.7)	(16.0)		(13.6)	(15.6)	(10.8)	(19.5)	(81.7)	(52.4)	(11.5)	(10.7)	(10.8)	(19.3)
918	918	7,503	2,943	4,560		5,089	1,424	503	488	563	605	4,258	504	483	1,091
		(14.0)	(11.7)	(16.0)		(13.6)	(15.6)	(10.8)	(19.5)	(81.7)	(52.4)	(11.5)	(10.7)	(10.8)	(19.3)
919	919	7,503	2,943	4,560		5,089	1,424	503	488	563	605	4,258	504	483	1,091
		(14.0)	(11.7)	(16.0)		(13.6)	(15.6)	(10.8)	(19.5)	(81.7)	(52.4)	(11.5)	(10.7)	(10.8)	(19.3)
920	920	8,437	3,482	4,955		5,807	1,476	666	488	563	605	4,955	593	565	1,156
		(15.7)	(13.9)	(17.4)		(15.6)	(16.1)	(14.3)	(19.5)	(81.7)	(52.4)	(13.4)	(12.6)	(12.7)	(20.5)
921	921	8,566	3,517	5,049		5,901	1,476	666	523	610	651	4,990	593	565	1,156
		(16.0)	(14.0)	(17.7)		(15.8)	(16.1)	(14.3)	(20.9)	(88.5)	(56.4)	(13.5)	(12.6)	(12.7)	(20.5)
922	922	8,566	3,517	5,049		5,901	1,476	666	523	610	651	4,990	593	565	1,156
		(16.0)	(14.0)	(17.7)		(15.8)	(16.1)	(14.3)	(20.9)	(88.5)	(56.4)	(13.5)	(12.6)	(12.7)	(20.5)
923	923	8,599	3,550	5,049		5,933	1,476	666	523	610	651	4,990	593	565	1,189
		(16.0)	(14.1)	(17.7)		(15.9)	(16.1)	(14.3)	(20.9)	(88.5)	(56.4)	(13.5)	(12.6)	(12.7)	(21.0)
924	924	8,645	3,550	5,095		5,980	1,476	666	523	610	651	5,037	593	565	1,189
		(16.1)	(14.1)	(17.9)		(16.0)	(16.1)	(14.3)	(20.9)	(88.5)	(56.4)	(13.6)	(12.6)	(12.7)	(21.0)
925	925	8,731	3,636	5,095		6,045	1,497	666	523	610	651	5,122	593	565	1,189
		(16.3)	(14.5)	(17.9)		(16.2)	(16.4)	(14.3)	(20.9)	(88.5)	(56.4)	(13.9)	(12.6)	(12.7)	(21.0)
926	926	8,731	3,636	5,095		6,045	1,497	666	523	610	651	5,122	593	565	1,189
		(16.3)	(14.5)	(17.9)		(16.2)	(16.4)	(14.3)	(20.9)	(88.5)	(56.4)	(13.9)	(12.6)	(12.7)	(21.0)
927	927	8,752	3,657	5,095		6,045	1,497	687	523	610	651	5,122	593	587	1,189
		(16.3)	(14.6)	(17.9)		(16.2)	(16.4)	(14.7)	(20.9)	(88.5)	(56.4)	(13.9)	(12.6)	(13.1)	(21.0)
928	928	8,752	3,657	5,095		6,045	1,497	687	523	610	651	5,122	593	587	1,189
		(16.3)	(14.6)	(17.9)		(16.2)	(16.4)	(14.7)	(20.9)	(88.5)	(56.4)	(13.9)	(12.6)	(13.1)	(21.0)
929	929	8,773	3,678	5,095		6,045	1,497	708	523	610	651	5,122	593	608	1,189
		(16.4)	(14.7)	(17.9)		(16.2)	(16.4)	(15.2)	(20.9)	(88.5)	(56.4)	(13.9)	(12.6)	(13.6)	(21.0)
930	930	9,295	3,795	5,501		6,312	1,581	880	523	610	651	5,602	593	608	1,231
		(17.3)	(15.1)	(19.3)		(16.9)	(17.3)	(18.9)	(20.9)	(88.5)	(56.4)	(15.2)	(12.6)	(13.6)	(21.8)
931	931	9,295	3,795	5,501		6,312	1,581	880	523	610	651	5,602	593	608	1,231
		(17.3)	(15.1)	(19.3)		(16.9)	(17.3)	(18.9)	(20.9)	(88.5)	(56.4)	(15.2)	(12.6)	(13.6)	(21.8)
932	932	9,295	3,795	5,501		6,312	1,581	880	523	610	651	5,602	593	608	1,231
		(17.3)	(15.1)	(19.3)		(16.9)	(17.3)	(18.9)	(20.9)	(88.5)	(56.4)	(15.2)	(12.6)	(13.6)	(21.8)
933	933	9,295	3,795	5,501		6,312	1,581	880	523	610	651	5,602	593	608	1,231
		(17.3)	(15.1)	(19.3)		(16.9)	(17.3)	(18.9)	(20.9)	(88.5)	(56.4)	(15.2)	(12.6)	(13.6)	(21.8)
934	934	9,295	3,795	5,501		6,312	1,581	880	523	610	651	5,602	593	608	1,231
		(17.3)	(15.1)	(19.3)		(16.9)	(17.3)	(18.9)	(20.9)	(88.5)	(56.4)	(15.2)	(12.6)	(13.6)	(21.8)
935	935	9,295	3,795	5,501		6,312	1,581	880	523	610	651	5,602	593	608	1,231
		(17.3)	(15.1)	(19.3)		(16.9)	(17.3)	(18.9)	(20.9)	(88.5)	(56.4)	(15.2)	(12.6)	(13.6)	(21.8)

936	936	9,295 (17.3)	3,795 (15.1)	5,501 (19.3)		6,312 (16.9)	1,581 (17.3)	880 (18.9)	523 (20.9)	610 (88.5)	651 (56.4)	5,602 (15.2)	593 (12.6)	608 (13.6)	1,231 (21.8)
937	937	9,295 (17.3)	3,795 (15.1)	5,501 (19.3)		6,312 (16.9)	1,581 (17.3)	880 (18.9)	523 (20.9)	610 (88.5)	651 (56.4)	5,602 (15.2)	593 (12.6)	608 (13.6)	1,231 (21.8)
938	938	9,316 (17.4)	3,815 (15.2)	5,501 (19.3)		6,312 (16.9)	1,601 (17.5)	880 (18.9)	523 (20.9)	610 (88.5)	651 (56.4)	5,622 (15.2)	593 (12.6)	608 (13.6)	1,231 (21.8)
939	939	9,418 (17.6)	3,851 (15.3)	5,567 (19.5)		6,312 (16.9)	1,601 (17.5)	880 (18.9)	625 (25.0)	610 (88.5)	651 (56.4)	5,622 (15.2)	593 (12.6)	675 (15.1)	1,267 (22.4)
940	940	9,905 (18.5)	4,104 (16.4)	5,801 (20.3)		6,610 (17.7)	1,683 (18.4)	880 (18.9)	732 (29.3)	610 (88.5)	651 (56.4)	5,977 (16.2)	614 (13.1)	695 (15.6)	1,358 (24.0)
941	941	9,905 (18.5)	4,104 (16.4)	5,801 (20.3)		6,610 (17.7)	1,683 (18.4)	880 (18.9)	732 (29.3)	610 (88.5)	651 (56.4)	5,977 (16.2)	614 (13.1)	695 (15.6)	1,358 (24.0)
942	949	10,085 (18.8)	4,190 (16.7)	5,895 (20.7)		6,769 (18.1)	1,683 (18.4)	901 (19.3)	732 (29.3)	610 (88.5)	698 (60.5)	6,110 (16.5)	614 (13.1)	695 (15.6)	1,358 (24.0)
950	959	11,948 (22.3)	5,497 (21.9)	6,452 (22.6)		7,911 (21.2)	2,097 (22.9)	1,106 (23.7)	834 (33.4)	642 (93.2)	751 (65.1)	7,204 (19.5)	803 (17.1)	795 (17.8)	1,754 (31.0)
960	969	12,301 (22.9)	5,689 (22.7)	6,612 (23.2)		8,134 (21.8)	2,138 (23.4)	1,128 (24.2)	900 (36.1)	642 (93.2)	751 (65.1)	7,468 (20.2)	803 (17.1)	795 (17.8)	1,842 (32.6)
970	979	12,744 (23.8)	5,878 (23.4)	6,866 (24.1)		8,419 (22.6)	2,159 (23.6)	1,128 (24.2)	1,038 (41.6)	642 (93.2)	751 (65.1)	7,812 (21.1)	803 (17.1)	862 (19.3)	1,874 (33.2)
980	989	13,224 (24.7)	6,057 (24.1)	7,167 (25.1)		8,685 (23.3)	2,252 (24.6)	1,248 (26.8)	1,038 (41.6)	642 (93.2)	845 (73.2)	8,142 (22.0)	803 (17.1)	862 (19.3)	1,931 (34.2)
990	999	13,518 (25.2)	6,226 (24.8)	7,292 (25.6)		8,844 (23.7)	2,346 (25.6)	1,291 (27.7)	1,038 (41.6)	642 (93.2)	877 (76.0)	8,303 (22.5)	803 (17.1)	962 (21.5)	1,931 (34.2)
1000	1099	19,907 (37.1)	9,372 (37.4)	10,535 (36.9)		12,855 (34.4)	3,837 (41.9)	1,932 (41.5)	1,282 (51.3)	642 (93.2)	1,010 (87.6)	12,788 (34.6)	1,067 (22.7)	1,605 (35.9)	2,794 (49.5)
1100	1199	24,320 (45.4)	11,220 (44.7)	13,100 (45.9)		15,757 (42.2)	4,590 (50.1)	2,447 (52.5)	1,526 (61.1)	642 (93.2)	1,057 (91.6)	16,181 (43.8)	1,365 (29.1)	2,002 (44.8)	3,072 (54.4)
1200	1299	28,688 (53.5)	13,048 (52.0)	15,640 (54.8)		18,401 (49.3)	5,493 (60.0)	3,033 (65.1)	1,761 (70.5)	642 (93.2)	1,154 (100.0)	18,952 (51.3)	1,600 (34.1)	2,392 (53.5)	3,948 (69.9)
1300	1399	31,935 (59.6)	14,418 (57.5)	17,517 (61.4)		20,888 (56.0)	5,868 (64.1)	3,240 (69.6)	1,939 (77.6)	689 (100.0)		21,564 (58.3)	1,955 (41.6)	2,448 (54.8)	4,124 (73.0)
1400	1499	34,610 (64.5)	15,808 (63.0)	18,802 (65.9)		22,880 (61.3)	6,273 (68.5)	3,448 (74.0)	2,009 (80.5)			23,714 (64.1)	2,139 (45.5)	2,643 (59.2)	4,271 (75.6)
1500		53,625 (100.0)	25,092 (100.0)	28,533 (100.0)		37,315 (100.0)	9,154 (100.0)	4,659 (100.0)	2,497 (100.0)			36,968 (100.0)	4,698 (100.0)	4,467 (100.0)	5,648 (100.0)
月平均賃金額		208,009	225,114	192,966		213,974	192,009	206,606	180,135	42,561	73,297	220,025	262,949	207,053	132,129
時間当平均賃金額		1,432	1,485	1,385		1,457	1,412	1,328	1,328	920	964	1,435	1,738	1,416	1,327
月一人当たり労働時間数		139	145	133		139	128	154	146	47	74	147	144	143	102
第1・20分位数		891	900	891		891	891	900	891	764	891	893	900	900	900
第1・10分位数		900	906	900		900	900	910	900	891	891	900	910	900	900
第1・4分位数		994	1,000	989		1,000	994	980	939	891	900	1,000	1,100	1,000	950
中位数		1,244	1,250	1,225		1,304	1,193	1,181	1,058	900	911	1,277	1,590	1,250	1,103
四分位偏差係数		0.2731	0.3200	0.2595		0.2657	0.2820	0.2268	0.2123	0.0107	0.0530	0.2619	0.3520	0.2768	0.2342

【上段】

累積労働者数

【下段】

累積構成比

総括表（１）（産業・就業形態別の賃金額階級別、規模別、地域別、年齢別表）

05年

総括表（１）

産業：宿泊業・飲食サービス業

就業形態：（全て）

産別適用除外含む全労働者

時間当たり所定内賃金額 （3手当を除く）	合計	規模別			地域別				年齢別					
		1～9人	10～29人	30～99人	金沢	小松	七尾	穴水	17歳以下	18～19歳	20～54歳	55～59歳	60～64歳	65歳以上
計	22,649	10,555	12,094		16,269	3,942	1,873	565	892	2,113	12,678	1,938	1,533	3,495
円	161	161			88	33	40							161
- 880	(0.7)	(1.5)			(0.5)	(0.8)	(2.2)							(4.6)
881 - 881	161 (0.7)	161 (1.5)			88 (0.5)	33 (0.8)	40 (2.2)							161 (4.6)
882 - 882	161 (0.7)	161 (1.5)			88 (0.5)	33 (0.8)	40 (2.2)							161 (4.6)
883 - 883	161 (0.7)	161 (1.5)			88 (0.5)	33 (0.8)	40 (2.2)							161 (4.6)
884 - 884	161 (0.7)	161 (1.5)			88 (0.5)	33 (0.8)	40 (2.2)							161 (4.6)
885 - 885	161 (0.7)	161 (1.5)			88 (0.5)	33 (0.8)	40 (2.2)							161 (4.6)
886 - 886	161 (0.7)	161 (1.5)			88 (0.5)	33 (0.8)	40 (2.2)							161 (4.6)
887 - 887	161 (0.7)	161 (1.5)			88 (0.5)	33 (0.8)	40 (2.2)							161 (4.6)
888 - 888	161 (0.7)	161 (1.5)			88 (0.5)	33 (0.8)	40 (2.2)							161 (4.6)
889 - 889	161 (0.7)	161 (1.5)			88 (0.5)	33 (0.8)	40 (2.2)							161 (4.6)
890 - 890	161 (0.7)	161 (1.5)			88 (0.5)	33 (0.8)	40 (2.2)							161 (4.6)
891 - 891	1,352 (6.0)	539 (5.1)	813 (6.7)		1,125 (6.9)	73 (1.9)	40 (2.2)	113 (20.0)	40 (4.5)	55 (2.6)	640 (5.0)	88 (4.5)	154 (10.1)	374 (10.7)
892 - 892	1,352 (6.0)	539 (5.1)	813 (6.7)		1,125 (6.9)	73 (1.9)	40 (2.2)	113 (20.0)	40 (4.5)	55 (2.6)	640 (5.0)	88 (4.5)	154 (10.1)	374 (10.7)
893 - 893	1,352 (6.0)	539 (5.1)	813 (6.7)		1,125 (6.9)	73 (1.9)	40 (2.2)	113 (20.0)	40 (4.5)	55 (2.6)	640 (5.0)	88 (4.5)	154 (10.1)	374 (10.7)
894 - 894	1,352 (6.0)	539 (5.1)	813 (6.7)		1,125 (6.9)	73 (1.9)	40 (2.2)	113 (20.0)	40 (4.5)	55 (2.6)	640 (5.0)	88 (4.5)	154 (10.1)	374 (10.7)
895 - 895	1,352 (6.0)	539 (5.1)	813 (6.7)		1,125 (6.9)	73 (1.9)	40 (2.2)	113 (20.0)	40 (4.5)	55 (2.6)	640 (5.0)	88 (4.5)	154 (10.1)	374 (10.7)
896 - 896	1,352 (6.0)	539 (5.1)	813 (6.7)		1,125 (6.9)	73 (1.9)	40 (2.2)	113 (20.0)	40 (4.5)	55 (2.6)	640 (5.0)	88 (4.5)	154 (10.1)	374 (10.7)
897 - 897	1,352 (6.0)	539 (5.1)	813 (6.7)		1,125 (6.9)	73 (1.9)	40 (2.2)	113 (20.0)	40 (4.5)	55 (2.6)	640 (5.0)	88 (4.5)	154 (10.1)	374 (10.7)
898 - 898	1,407 (6.2)	539 (5.1)	868 (7.2)		1,181 (7.3)	73 (1.9)	40 (2.2)	113 (20.0)	40 (4.5)	55 (2.6)	695 (5.5)	88 (4.5)	154 (10.1)	374 (10.7)
899 - 899	1,407 (6.2)	539 (5.1)	868 (7.2)		1,181 (7.3)	73 (1.9)	40 (2.2)	113 (20.0)	40 (4.5)	55 (2.6)	695 (5.5)	88 (4.5)	154 (10.1)	374 (10.7)
900 - 900	3,984 (17.6)	1,921 (18.2)	2,063 (17.1)		3,100 (19.1)	537 (13.6)	121 (6.5)	226 (40.0)	427 (47.9)	216 (10.2)	1,727 (13.6)	187 (9.7)	375 (24.4)	1,052 (30.1)
901 - 901	3,984 (17.6)	1,921 (18.2)	2,063 (17.1)		3,100 (19.1)	537 (13.6)	121 (6.5)	226 (40.0)	427 (47.9)	216 (10.2)	1,727 (13.6)	187 (9.7)	375 (24.4)	1,052 (30.1)
902 - 902	3,984 (17.6)	1,921 (18.2)	2,063 (17.1)		3,100 (19.1)	537 (13.6)	121 (6.5)	226 (40.0)	427 (47.9)	216 (10.2)	1,727 (13.6)	187 (9.7)	375 (24.4)	1,052 (30.1)
903 - 903	3,984 (17.6)	1,921 (18.2)	2,063 (17.1)		3,100 (19.1)	537 (13.6)	121 (6.5)	226 (40.0)	427 (47.9)	216 (10.2)	1,727 (13.6)	187 (9.7)	375 (24.4)	1,052 (30.1)
904 - 904	3,984 (17.6)	1,921 (18.2)	2,063 (17.1)		3,100 (19.1)	537 (13.6)	121 (6.5)	226 (40.0)	427 (47.9)	216 (10.2)	1,727 (13.6)	187 (9.7)	375 (24.4)	1,052 (30.1)
905 - 905	3,984 (17.6)	1,921 (18.2)	2,063 (17.1)		3,100 (19.1)	537 (13.6)	121 (6.5)	226 (40.0)	427 (47.9)	216 (10.2)	1,727 (13.6)	187 (9.7)	375 (24.4)	1,052 (30.1)
	4,024	1,961	2,063		3,100	537	162	226	427	216	1,767	187	375	1,052

906 -	906	(17.8)	(18.6)	(17.1)		(19.1)	(13.6)	(8.6)	(40.0)	(47.9)	(10.2)	(13.9)	(9.7)	(24.4)	(30.1)
		4,024	1,961	2,063		3,100	537	162	226	427	216	1,767	187	375	1,052
907 -	907	(17.8)	(18.6)	(17.1)		(19.1)	(13.6)	(8.6)	(40.0)	(47.9)	(10.2)	(13.9)	(9.7)	(24.4)	(30.1)
		4,024	1,961	2,063		3,100	537	162	226	427	216	1,767	187	375	1,052
908 -	908	(17.8)	(18.6)	(17.1)		(19.1)	(13.6)	(8.6)	(40.0)	(47.9)	(10.2)	(13.9)	(9.7)	(24.4)	(30.1)
		4,024	1,961	2,063		3,100	537	162	226	427	216	1,767	187	375	1,052
909 -	909	(17.8)	(18.6)	(17.1)		(19.1)	(13.6)	(8.6)	(40.0)	(47.9)	(10.2)	(13.9)	(9.7)	(24.4)	(30.1)
		4,024	1,961	2,063		3,100	537	162	226	427	216	1,767	187	375	1,052
910	910	(17.8)	(18.6)	(17.1)		(19.1)	(13.6)	(8.6)	(40.0)	(47.9)	(10.2)	(13.9)	(9.7)	(24.4)	(30.1)
		4,024	1,961	2,063		3,100	537	162	226	427	216	1,767	187	375	1,052
911	911	(17.8)	(18.6)	(17.1)		(19.1)	(13.6)	(8.6)	(40.0)	(47.9)	(10.2)	(13.9)	(9.7)	(24.4)	(30.1)
		4,024	1,961	2,063		3,100	537	162	226	427	216	1,767	187	375	1,052
912	912	(17.8)	(18.6)	(17.1)		(19.1)	(13.6)	(8.6)	(40.0)	(47.9)	(10.2)	(13.9)	(9.7)	(24.4)	(30.1)
		4,024	1,961	2,063		3,100	537	162	226	427	216	1,767	187	375	1,052
913	913	(17.8)	(18.6)	(17.1)		(19.1)	(13.6)	(8.6)	(40.0)	(47.9)	(10.2)	(13.9)	(9.7)	(24.4)	(30.1)
		4,024	1,961	2,063		3,100	537	162	226	427	216	1,767	187	375	1,052
914	914	(17.8)	(18.6)	(17.1)		(19.1)	(13.6)	(8.6)	(40.0)	(47.9)	(10.2)	(13.9)	(9.7)	(24.4)	(30.1)
		4,024	1,961	2,063		3,100	537	162	226	427	216	1,767	187	375	1,052
915	915	(17.9)	(18.6)	(17.4)		(19.1)	(14.6)	(8.6)	(40.0)	(47.9)	(10.2)	(13.9)	(9.7)	(24.4)	(31.3)
		4,065	1,961	2,104		3,100	577	162	226	427	216	1,767	187	375	1,092
916	916	(18.1)	(19.0)	(17.4)		(19.3)	(14.6)	(8.6)	(40.0)	(47.9)	(10.2)	(14.3)	(9.7)	(24.4)	(31.3)
		4,109	2,005	2,104		3,144	577	162	226	427	216	1,811	187	375	1,092
917	917	(18.3)	(19.4)	(17.4)		(19.6)	(14.6)	(8.6)	(40.0)	(47.9)	(10.2)	(14.6)	(9.7)	(24.4)	(31.3)
		4,153	2,049	2,104		3,188	577	162	226	427	216	1,855	187	375	1,092
918	918	(18.5)	(19.8)	(17.4)		(19.9)	(14.6)	(8.6)	(40.0)	(47.9)	(10.2)	(15.0)	(9.7)	(24.4)	(31.3)
		4,197	2,093	2,104		3,232	577	162	226	427	216	1,899	187	375	1,092
919	919	(18.5)	(19.8)	(17.4)		(19.9)	(14.6)	(8.6)	(40.0)	(47.9)	(10.2)	(15.0)	(9.7)	(24.4)	(31.3)
		4,197	2,093	2,104		3,232	577	162	226	427	216	1,899	187	375	1,092
920	920	(19.5)	(20.2)	(18.8)		(21.2)	(14.6)	(8.6)	(40.0)	(47.9)	(10.2)	(15.8)	(15.4)	(24.4)	(31.3)
		4,406	2,137	2,269		3,441	577	162	226	427	216	1,998	298	375	1,092
921	921	(19.5)	(20.2)	(18.8)		(21.2)	(14.6)	(8.6)	(40.0)	(47.9)	(10.2)	(15.8)	(15.4)	(24.4)	(31.3)
		4,406	2,137	2,269		3,441	577	162	226	427	216	1,998	298	375	1,092
922	922	(19.6)	(20.6)	(18.8)		(21.2)	(15.5)	(8.6)	(40.0)	(47.9)	(10.2)	(15.8)	(17.1)	(24.4)	(31.3)
		4,439	2,170	2,269		3,441	610	162	226	427	216	1,998	331	375	1,092
923	923	(20.2)	(21.9)	(18.8)		(21.4)	(18.0)	(8.6)	(40.0)	(47.9)	(10.2)	(16.4)	(17.1)	(24.4)	(33.1)
		4,582	2,313	2,269		3,485	708	162	226	427	216	2,075	331	375	1,158
924	924	(20.2)	(21.9)	(18.8)		(21.4)	(18.0)	(8.6)	(40.0)	(47.9)	(10.2)	(16.4)	(17.1)	(24.4)	(33.1)
		4,582	2,313	2,269		3,485	708	162	226	427	216	2,075	331	375	1,158
925	925	(20.2)	(21.9)	(18.8)		(21.4)	(18.0)	(8.6)	(40.0)	(47.9)	(10.2)	(16.4)	(17.1)	(24.4)	(33.1)
		4,582	2,313	2,269		3,485	708	162	226	427	216	2,075	331	375	1,158
926	926	(20.2)	(21.9)	(18.8)		(21.4)	(18.0)	(8.6)	(40.0)	(47.9)	(10.2)	(16.4)	(17.1)	(24.4)	(33.1)
		4,582	2,313	2,269		3,485	708	162	226	427	216	2,075	331	375	1,158
927	927	(20.4)	(22.3)	(18.8)		(21.7)	(18.0)	(8.6)	(40.0)	(47.9)	(10.2)	(16.7)	(17.1)	(24.4)	(33.1)
		4,626	2,357	2,269		3,530	708	162	226	427	216	2,119	331	375	1,158
928	928	(20.4)	(22.3)	(18.8)		(21.7)	(18.0)	(8.6)	(40.0)	(47.9)	(10.2)	(16.7)	(17.1)	(24.4)	(33.1)
		4,626	2,357	2,269		3,530	708	162	226	427	216	2,119	331	375	1,158
929	929	(20.4)	(22.3)	(18.8)		(21.7)	(18.0)	(8.6)	(40.0)	(47.9)	(10.2)	(16.7)	(17.1)	(24.4)	(33.1)
		4,626	2,357	2,269		3,530	708	162	226	427	216	2,119	331	375	1,158
930	930	(21.3)	(24.2)	(18.8)		(21.7)	(23.0)	(8.6)	(40.0)	(66.2)	(10.2)	(17.0)	(17.1)	(24.4)	(33.1)
		4,823	2,553	2,269		3,530	905	162	226	591	216	2,152	331	375	1,158
931	931	(21.3)	(24.2)	(18.8)		(21.7)	(23.0)	(8.6)	(40.0)	(66.2)	(10.2)	(17.0)	(17.1)	(24.4)	(33.1)
		4,823	2,553	2,269		3,530	905	162	226	591	216	2,152	331	375	1,158
932	932	(21.3)	(24.2)	(18.8)		(21.7)	(23.0)	(8.6)	(40.0)	(66.2)	(10.2)	(17.0)	(17.1)	(24.4)	(33.1)
		4,823	2,553	2,269		3,530	905	162	226	591	216	2,152	331	375	1,158
933	933	(21.3)	(24.2)	(18.8)		(21.7)	(23.0)	(8.6)	(40.0)	(66.2)	(10.2)	(17.0)	(17.1)	(24.4)	(33.1)
		4,823	2,553	2,269		3,530	905	162	226	591	216	2,152	331	375	1,158
934	934	(21.3)	(24.2)	(18.8)		(21.7)	(23.0)	(8.6)	(40.0)	(66.2)	(10.2)	(17.0)	(17.1)	(24.4)	(33.1)
		4,823	2,553	2,269		3,530	905	162	226	591	216	2,152	331	375	1,158
935	935	(22.2)	(24.2)	(20.5)		(22.7)	(24.0)	(8.6)	(40.0)	(66.2)	(10.2)	(17.8)	(17.1)	(24.4)	(35.9)
		5,028	2,553	2,475		3,695	945	162	226	591	216	2,263	331	375	1,253

936	936	5,028 (22.2)	2,553 (24.2)	2,475 (20.5)		3,695 (22.7)	945 (24.0)	162 (8.6)	226 (40.0)	591 (66.2)	216 (10.2)	2,263 (17.8)	331 (17.1)	375 (24.4)	1,253 (35.9)
937	937	5,028 (22.2)	2,553 (24.2)	2,475 (20.5)		3,695 (22.7)	945 (24.0)	162 (8.6)	226 (40.0)	591 (66.2)	216 (10.2)	2,263 (17.8)	331 (17.1)	375 (24.4)	1,253 (35.9)
938	938	5,069 (22.4)	2,553 (24.2)	2,515 (20.8)		3,695 (22.7)	986 (25.0)	162 (8.6)	226 (40.0)	591 (66.2)	216 (10.2)	2,263 (17.8)	331 (17.1)	415 (27.1)	1,253 (35.9)
939	939	5,109 (22.6)	2,594 (24.6)	2,515 (20.8)		3,695 (22.7)	986 (25.0)	202 (10.8)	226 (40.0)	591 (66.2)	216 (10.2)	2,303 (18.2)	331 (17.1)	415 (27.1)	1,253 (35.9)
940	940	5,275 (23.3)	2,594 (24.6)	2,681 (22.2)		3,861 (23.7)	986 (25.0)	202 (10.8)	226 (40.0)	591 (66.2)	216 (10.2)	2,469 (19.5)	331 (17.1)	415 (27.1)	1,253 (35.9)
941	941	5,275 (23.3)	2,594 (24.6)	2,681 (22.2)		3,861 (23.7)	986 (25.0)	202 (10.8)	226 (40.0)	591 (66.2)	216 (10.2)	2,469 (19.5)	331 (17.1)	415 (27.1)	1,253 (35.9)
942	949	5,275 (23.3)	2,594 (24.6)	2,681 (22.2)		3,861 (23.7)	986 (25.0)	202 (10.8)	226 (40.0)	591 (66.2)	216 (10.2)	2,469 (19.5)	331 (17.1)	415 (27.1)	1,253 (35.9)
950	959	7,453 (32.9)	3,583 (33.9)	3,870 (32.0)		5,350 (32.9)	1,475 (37.4)	403 (21.5)	226 (40.0)	719 (80.7)	577 (27.3)	3,565 (28.1)	331 (17.1)	536 (35.0)	1,726 (49.4)
960	969	8,053 (35.6)	3,992 (37.8)	4,061 (33.6)		5,460 (33.6)	1,883 (47.8)	484 (25.8)	226 (40.0)	759 (85.2)	609 (28.8)	3,905 (30.8)	331 (17.1)	569 (37.1)	1,880 (53.8)
970	979	8,355 (36.9)	4,057 (38.4)	4,297 (35.5)		5,515 (33.9)	2,030 (51.5)	584 (31.2)	226 (40.0)	759 (85.2)	609 (28.8)	4,067 (32.1)	471 (24.3)	569 (37.1)	1,880 (53.8)
980	989	8,685 (38.3)	4,102 (38.9)	4,584 (37.9)		5,725 (35.2)	2,151 (54.6)	584 (31.2)	226 (40.0)	759 (85.2)	665 (31.5)	4,246 (33.5)	526 (27.2)	609 (39.7)	1,880 (53.8)
990	999	8,899 (39.3)	4,134 (39.2)	4,765 (39.4)		5,725 (35.2)	2,264 (57.4)	684 (36.5)	226 (40.0)	759 (85.2)	665 (31.5)	4,420 (34.9)	567 (29.2)	609 (39.7)	1,880 (53.8)
1000	1099	14,428 (63.7)	7,102 (67.3)	7,326 (60.6)		9,540 (58.6)	3,219 (81.6)	1,368 (73.0)	301 (53.3)	892 (100.0)	1,705 (80.7)	7,261 (57.3)	900 (46.5)	873 (57.0)	2,797 (80.0)
1100	1199	17,905 (79.1)	8,331 (78.9)	9,574 (79.2)		12,496 (76.8)	3,445 (87.4)	1,549 (82.7)	414 (73.3)		2,025 (95.8)	9,615 (75.8)	1,092 (56.4)	1,220 (79.6)	3,062 (87.6)
1200	1299	19,241 (85.0)	9,200 (87.2)	10,041 (83.0)		13,368 (82.2)	3,592 (91.1)	1,792 (95.7)	490 (86.7)		2,113 (100.0)	10,528 (83.0)	1,247 (64.3)	1,220 (79.6)	3,242 (92.7)
1300	1399	19,674 (86.9)	9,386 (88.9)	10,287 (85.1)		13,621 (83.7)	3,771 (95.6)	1,792 (95.7)	490 (86.7)			10,737 (84.7)	1,342 (69.3)	1,260 (82.2)	3,330 (95.3)
1400	1499	20,263 (89.5)	9,589 (90.8)	10,674 (88.3)		14,140 (86.9)	3,803 (96.5)	1,792 (95.7)	527 (93.3)			11,160 (88.0)	1,453 (75.0)	1,260 (82.2)	3,385 (96.8)
1500		22,649 (100.0)	10,555 (100.0)	12,094 (100.0)		16,269 (100.0)	3,942 (100.0)	1,873 (100.0)	565 (100.0)			12,678 (100.0)	1,938 (100.0)	1,533 (100.0)	3,495 (100.0)
月平均賃金額		112,773	110,233	114,990		115,994	93,825	131,104	91,454	43,944	49,521	123,391	155,576	130,679	98,473
時間当平均賃金額		1,115	1,117	1,112		1,140	1,038	1,054	1,116	930	1,008	1,152	1,238	1,134	1,013
月一人当たり労働時間数		96	94	98		96	88	123	79	48	50	101	123	110	98
第1・20分位数		891	891	891		891	900	900	891	900	900	891	900	891	891
第1・10分位数		900	900	900		900	900	939	891	900	900	900	920	891	891
第1・4分位数		950	950	950		950	938	963	900	900	950	950	982	938	900
中位数		1,000	1,000	1,000		1,000	976	1,000	1,000	930	1,000	1,000	1,100	1,000	960
四分位偏差係数		0.1037	0.1050	0.1037		0.1192	0.0380	0.0690	0.1751	0.0272	0.0502	0.1203	0.2386	0.1252	0.0897

【上段】

累積労働者数

【下段】

累積構成比

総括表（1）（産業・就業形態別の賃金額階級別、規模別、地域別、年齢別表）

05年

総括表（1）

産業：医療、福祉

就業形態：（全て）

産別適用除外含む全労働者

時間当り所定内賃金額 （3手当を除く）	合計	規模別			地域別				年齢別					
		1～9人	10～29人	30～99人	金沢	小松	七尾	穴水	17歳以下	18～19歳	20～54歳	55～59歳	60～64歳	65歳以上
計	22,011	8,263	13,748		14,706	3,775	2,376	1,154	23	23	13,382	2,517	2,061	4,005
円	143	116	28		143						74		46	23
-	880	(0.7)	(1.4)	(0.2)	(1.0)						(0.6)		(2.2)	(0.6)
881 -	881	(0.7)	(1.4)	(0.2)	(1.0)						(0.6)		(2.2)	(0.6)
882 -	882	(0.7)	(1.4)	(0.2)	(1.0)						(0.6)		(2.2)	(0.6)
883 -	883	(0.7)	(1.4)	(0.2)	(1.0)						(0.6)		(2.2)	(0.6)
884 -	884	(0.7)	(1.4)	(0.2)	(1.0)						(0.6)		(2.2)	(0.6)
885 -	885	(0.7)	(1.4)	(0.2)	(1.0)						(0.6)		(2.2)	(0.6)
886 -	886	(0.7)	(1.4)	(0.2)	(1.0)						(0.6)		(2.2)	(0.6)
887 -	887	(0.7)	(1.4)	(0.2)	(1.0)						(0.6)		(2.2)	(0.6)
888 -	888	(0.7)	(1.4)	(0.2)	(1.0)						(0.6)		(2.2)	(0.6)
889 -	889	(0.7)	(1.4)	(0.2)	(1.0)						(0.6)		(2.2)	(0.6)
890 -	890	(0.7)	(1.4)	(0.2)	(1.0)						(0.6)		(2.2)	(0.6)
891 -	891	(0.8)	(1.4)	(0.4)	(1.2)						(0.6)		(2.2)	(1.3)
892 -	892	(1.4)	(3.1)	(0.4)	(2.1)						(0.7)	(1.8)	(2.2)	(3.0)
893 -	893	(1.4)	(3.1)	(0.4)	(2.1)						(0.7)	(1.8)	(2.2)	(3.0)
894 -	894	(1.4)	(3.1)	(0.4)	(2.1)						(0.7)	(1.8)	(2.2)	(3.0)
895 -	895	(1.5)	(3.4)	(0.4)	(2.1)			30			(1.0)	(1.8)	(2.2)	(3.0)
896 -	896	(1.5)	(3.4)	(0.4)	(2.1)			30			(1.0)	(1.8)	(2.2)	(3.0)
897 -	897	(1.5)	(3.4)	(0.4)	(2.1)			30			(1.0)	(1.8)	(2.2)	(3.0)
898 -	898	(1.5)	(3.4)	(0.4)	(2.1)			30			(1.0)	(1.8)	(2.2)	(3.0)
899 -	899	(1.5)	(3.4)	(0.4)	(2.1)			30			(1.0)	(1.8)	(2.2)	(3.0)
900 -	900	(3.7)	(6.4)	(2.1)	(4.1)	58	114	39	23	23	(100.0)	(100.0)	(1.8)	(4.1)
901 -	901	(3.7)	(6.4)	(2.1)	(4.1)	58	114	39			(1.8)	(4.1)	(3.4)	(8.6)
902 -	902	(3.7)	(6.4)	(2.1)	(4.1)	58	114	39			(1.8)	(4.1)	(3.4)	(8.6)
903 -	903	(3.9)	(6.9)	(2.1)	(4.4)	58	114	39			(2.2)	(4.1)	(3.4)	(8.6)
904 -	904	(3.9)	(6.9)	(2.1)	(4.4)	58	114	39			(2.2)	(4.1)	(3.4)	(8.6)
905 -	905	(3.9)	(6.9)	(2.1)	(4.4)	58	114	39			(2.2)	(4.1)	(3.4)	(8.6)
		859	573	286	647	58	114	39			294	103	69	346

906 -	906	(3.9)	(6.9)	(2.1)		(4.4)	(1.5)	(4.8)	(3.4)			(2.2)	(4.1)	(3.4)	(8.6)
		859	573	286		647	58	114	39			294	103	69	346
907 -	907	(3.9)	(6.9)	(2.1)		(4.4)	(1.5)	(4.8)	(3.4)			(2.2)	(4.1)	(3.4)	(8.6)
		892	606	286		647	58	114	73			327	103	69	346
908 -	908	(4.1)	(7.3)	(2.1)		(4.4)	(1.5)	(4.8)	(6.3)			(2.4)	(4.1)	(3.4)	(8.6)
		892	606	286		647	58	114	73			327	103	69	346
909 -	909	(4.1)	(7.3)	(2.1)		(4.4)	(1.5)	(4.8)	(6.3)			(2.4)	(4.1)	(3.4)	(8.6)
		1,028	663	365		726	82	114	106			355	103	69	454
910	910	(4.7)	(8.0)	(2.7)		(4.9)	(2.2)	(4.8)	(9.2)			(2.7)	(4.1)	(3.4)	(11.3)
		1,061	696	365		726	82	114	139			388	103	69	454
911	911	(4.8)	(8.4)	(2.7)		(4.9)	(2.2)	(4.8)	(12.0)			(2.9)	(4.1)	(3.4)	(11.3)
		1,061	696	365		726	82	114	139			388	103	69	454
912	912	(4.8)	(8.4)	(2.7)		(4.9)	(2.2)	(4.8)	(12.0)			(2.9)	(4.1)	(3.4)	(11.3)
		1,084	719	365		749	82	114	139			411	103	69	454
913	913	(4.9)	(8.7)	(2.7)		(5.1)	(2.2)	(4.8)	(12.0)			(3.1)	(4.1)	(3.4)	(11.3)
		1,117	752	365		749	82	114	172			411	103	103	454
914	914	(5.1)	(9.1)	(2.7)		(5.1)	(2.2)	(4.8)	(14.9)			(3.1)	(4.1)	(5.0)	(11.3)
		1,117	752	365		749	82	114	172			411	103	103	454
915	915	(5.1)	(9.1)	(2.7)		(5.1)	(2.2)	(4.8)	(14.9)			(3.1)	(4.1)	(5.0)	(11.3)
		1,117	752	365		749	82	114	172			411	103	103	454
916	916	(5.1)	(9.1)	(2.7)		(5.1)	(2.2)	(4.8)	(14.9)			(3.1)	(4.1)	(5.0)	(11.3)
		1,117	752	365		749	82	114	172			411	103	103	454
917	917	(5.1)	(9.1)	(2.7)		(5.1)	(2.2)	(4.8)	(14.9)			(3.1)	(4.1)	(5.0)	(11.3)
		1,117	752	365		749	82	114	172			411	103	103	454
918	918	(5.1)	(9.1)	(2.7)		(5.1)	(2.2)	(4.8)	(14.9)			(3.1)	(4.1)	(5.0)	(11.3)
		1,117	752	365		749	82	114	172			411	103	103	454
919	919	(5.1)	(9.1)	(2.7)		(5.1)	(2.2)	(4.8)	(14.9)			(3.1)	(4.1)	(5.0)	(11.3)
		1,214	821	393		846	82	114	172			457	103	103	505
920	920	(5.5)	(9.9)	(2.9)		(5.8)	(2.2)	(4.8)	(14.9)			(3.4)	(4.1)	(5.0)	(12.6)
		1,214	821	393		846	82	114	172			457	103	103	505
921	921	(5.5)	(9.9)	(2.9)		(5.8)	(2.2)	(4.8)	(14.9)			(3.4)	(4.1)	(5.0)	(12.6)
		1,214	821	393		846	82	114	172			457	103	103	505
922	922	(5.5)	(9.9)	(2.9)		(5.8)	(2.2)	(4.8)	(14.9)			(3.4)	(4.1)	(5.0)	(12.6)
		1,214	821	393		846	82	114	172			457	103	103	505
923	923	(5.5)	(9.9)	(2.9)		(5.8)	(2.2)	(4.8)	(14.9)			(3.4)	(4.1)	(5.0)	(12.6)
		1,214	821	393		846	82	114	172			457	103	103	505
924	924	(5.5)	(9.9)	(2.9)		(5.8)	(2.2)	(4.8)	(14.9)			(3.4)	(4.1)	(5.0)	(12.6)
		1,315	821	493		874	155	114	172			457	128	127	557
925	925	(6.0)	(9.9)	(3.6)		(5.9)	(4.1)	(4.8)	(14.9)			(3.4)	(5.1)	(6.2)	(13.9)
		1,315	821	493		874	155	114	172			457	128	127	557
926	926	(6.0)	(9.9)	(3.6)		(5.9)	(4.1)	(4.8)	(14.9)			(3.4)	(5.1)	(6.2)	(13.9)
		1,398	821	576		957	155	114	172			513	128	127	585
927	927	(6.4)	(9.9)	(4.2)		(6.5)	(4.1)	(4.8)	(14.9)			(3.8)	(5.1)	(6.2)	(14.6)
		1,398	821	576		957	155	114	172			513	128	127	585
928	928	(6.4)	(9.9)	(4.2)		(6.5)	(4.1)	(4.8)	(14.9)			(3.8)	(5.1)	(6.2)	(14.6)
		1,398	821	576		957	155	114	172			513	128	127	585
929	929	(6.4)	(9.9)	(4.2)		(6.5)	(4.1)	(4.8)	(14.9)			(3.8)	(5.1)	(6.2)	(14.6)
		1,511	891	620		1,026	180	114	192			626	128	127	585
930	930	(6.9)	(10.8)	(4.5)		(7.0)	(4.8)	(4.8)	(16.6)			(4.7)	(5.1)	(6.2)	(14.6)
		1,511	891	620		1,026	180	114	192			626	128	127	585
931	931	(6.9)	(10.8)	(4.5)		(7.0)	(4.8)	(4.8)	(16.6)			(4.7)	(5.1)	(6.2)	(14.6)
		1,511	891	620		1,026	180	114	192			626	128	127	585
932	932	(6.9)	(10.8)	(4.5)		(7.0)	(4.8)	(4.8)	(16.6)			(4.7)	(5.1)	(6.2)	(14.6)
		1,511	891	620		1,026	180	114	192			626	128	127	585
933	933	(6.9)	(10.8)	(4.5)		(7.0)	(4.8)	(4.8)	(16.6)			(4.7)	(5.1)	(6.2)	(14.6)
		1,511	891	620		1,026	180	114	192			626	128	127	585
934	934	(6.9)	(10.8)	(4.5)		(7.0)	(4.8)	(4.8)	(16.6)			(4.7)	(5.1)	(6.2)	(14.6)
		1,558	937	620		1,073	180	114	192			672	128	127	585
935	935	(7.1)	(11.3)	(4.5)		(7.3)	(4.8)	(4.8)	(16.6)			(5.0)	(5.1)	(6.2)	(14.6)

936	936	1,581 (7.2)	960 (11.6)	620 (4.5)		1,096 (7.5)	180 (4.8)	114 (4.8)	192 (16.6)			672 (5.0)	151 (6.0)	127 (6.2)	585 (14.6)
937	937	1,747 (7.9)	1,099 (13.3)	648 (4.7)		1,262 (8.6)	180 (4.8)	114 (4.8)	192 (16.6)			839 (6.3)	151 (6.0)	127 (6.2)	585 (14.6)
938	938	1,775 (8.1)	1,099 (13.3)	676 (4.9)		1,290 (8.8)	180 (4.8)	114 (4.8)	192 (16.6)			866 (6.5)	151 (6.0)	127 (6.2)	585 (14.6)
939	939	1,775 (8.1)	1,099 (13.3)	676 (4.9)		1,290 (8.8)	180 (4.8)	114 (4.8)	192 (16.6)			866 (6.5)	151 (6.0)	127 (6.2)	585 (14.6)
940	940	1,803 (8.2)	1,099 (13.3)	704 (5.1)		1,318 (9.0)	180 (4.8)	114 (4.8)	192 (16.6)			894 (6.7)	151 (6.0)	127 (6.2)	585 (14.6)
941	941	1,803 (8.2)	1,099 (13.3)	704 (5.1)		1,318 (9.0)	180 (4.8)	114 (4.8)	192 (16.6)			894 (6.7)	151 (6.0)	127 (6.2)	585 (14.6)
942	949	1,939 (8.8)	1,156 (14.0)	783 (5.7)		1,396 (9.5)	238 (6.3)	114 (4.8)	192 (16.6)			918 (6.9)	202 (8.0)	161 (7.8)	612 (15.3)
950	959	2,331 (10.6)	1,329 (16.1)	1,002 (7.3)		1,646 (11.2)	296 (7.8)	197 (8.3)	192 (16.6)			1,101 (8.2)	248 (9.8)	161 (7.8)	774 (19.3)
960	969	2,471 (11.2)	1,445 (17.5)	1,026 (7.5)		1,761 (12.0)	320 (8.5)	197 (8.3)	192 (16.6)			1,125 (8.4)	271 (10.8)	161 (7.8)	868 (21.7)
970	979	2,652 (12.0)	1,491 (18.0)	1,161 (8.4)		1,918 (13.0)	345 (9.1)	197 (8.3)	192 (16.6)			1,227 (9.2)	271 (10.8)	184 (8.9)	923 (23.1)
980	989	3,072 (14.0)	1,627 (19.7)	1,444 (10.5)		2,071 (14.1)	500 (13.2)	197 (8.3)	304 (26.3)			1,402 (10.5)	329 (13.1)	237 (11.5)	1,058 (26.4)
990	999	3,072 (14.0)	1,627 (19.7)	1,444 (10.5)		2,071 (14.1)	500 (13.2)	197 (8.3)	304 (26.3)			1,402 (10.5)	329 (13.1)	237 (11.5)	1,058 (26.4)
1000	1099	6,136 (27.9)	2,734 (33.1)	3,402 (24.7)		3,918 (26.6)	1,194 (31.6)	497 (20.9)	528 (45.7)			3,287 (24.6)	570 (22.7)	460 (22.3)	1,772 (44.3)
1100	1199	8,766 (39.8)	3,522 (42.6)	5,243 (38.1)		5,889 (40.0)	1,572 (41.6)	757 (31.9)	547 (47.4)			5,042 (37.7)	726 (28.9)	728 (35.3)	2,223 (55.5)
1200	1299	11,584 (52.6)	4,304 (52.1)	7,280 (53.0)		7,870 (53.5)	2,024 (53.6)	984 (41.4)	706 (61.2)			6,772 (50.6)	1,019 (40.5)	949 (46.0)	2,797 (69.8)
1300	1399	13,626 (61.9)	4,944 (59.8)	8,682 (63.1)		9,209 (62.6)	2,528 (67.0)	1,012 (42.6)	877 (76.0)			8,025 (60.0)	1,337 (53.1)	1,075 (52.1)	3,144 (78.5)
1400	1499	15,635 (71.0)	5,825 (70.5)	9,810 (71.4)		10,609 (72.1)	2,824 (74.8)	1,272 (53.5)	930 (80.6)			9,419 (70.4)	1,690 (67.1)	1,251 (60.7)	3,228 (80.6)
1500		22,011 (100.0)	8,263 (100.0)	13,748 (100.0)		14,706 (100.0)	3,775 (100.0)	2,376 (100.0)	1,154 (100.0)			13,382 (100.0)	2,517 (100.0)	2,061 (100.0)	4,005 (100.0)
月平均賃金額		191,805	186,293	195,117		185,804	206,416	210,587	181,801	122,400	21,600	203,554	213,017	202,955	134,858
時間当平均賃金額		1,393	1,429	1,371		1,407	1,314	1,505	1,230	900	900	1,389	1,389	1,441	1,387
月一人当たり労働時間数		140	139	141		136	155	139	145	136	24	149	151	141	105
第1・20分位数		914	900	940		913	945	950	908	900	900	935	925	925	900
第1・10分位数		950	930	988		950	980	1,000	911	900	900	988	969	988	910
第1・4分位数		1,077	1,020	1,100		1,083	1,050	1,157	988	900	900	1,100	1,116	1,110	980
中位数		1,270	1,263	1,274		1,263	1,266	1,469	1,209	900	900	1,291	1,393	1,364	1,157
四分位偏差係数		0.1806	0.2037	0.1728		0.1780	0.1830	0.2123	0.1587	0.0004	0.0004	0.1750	0.1514	0.1800	0.1633

【上段】

累積労働者数

【下段】

累積構成比

総括表（１）（産業・就業形態別の賃金額階級別、規模別、地域別、年齢別表）

05年

総括表（１）

産業：サービス業

就業形態：（全て）

産別適用除外含む全労働者

時間当たり所定内賃金額 （3手当を除く）	合計	規模別			地域別				年齢別					
		1～9人	10～29人	30～99人	金沢	小松	七尾	穴水	17歳以下	18～19歳	20～54歳	55～59歳	60～64歳	65歳以上
計	27,440	15,147	12,293		19,435	4,568	2,084	1,353	33	343	18,365	2,129	2,408	4,163
円	983	983			435	227	174	147			477	115	25	366
-	880	(3.6)	(6.5)		(2.2)	(5.0)	(8.4)	(10.9)			(2.6)	(5.4)	(1.0)	(8.8)
881 -	881	1,006 (3.7)	983 (6.5)	22 (0.2)	458 (2.4)	227 (5.0)	174 (8.4)	147 (10.9)			500 (2.7)	115 (5.4)	25 (1.0)	366 (8.8)
882 -	882	1,006 (3.7)	983 (6.5)	22 (0.2)	458 (2.4)	227 (5.0)	174 (8.4)	147 (10.9)			500 (2.7)	115 (5.4)	25 (1.0)	366 (8.8)
883 -	883	1,006 (3.7)	983 (6.5)	22 (0.2)	458 (2.4)	227 (5.0)	174 (8.4)	147 (10.9)			500 (2.7)	115 (5.4)	25 (1.0)	366 (8.8)
884 -	884	1,006 (3.7)	983 (6.5)	22 (0.2)	458 (2.4)	227 (5.0)	174 (8.4)	147 (10.9)			500 (2.7)	115 (5.4)	25 (1.0)	366 (8.8)
885 -	885	1,006 (3.7)	983 (6.5)	22 (0.2)	458 (2.4)	227 (5.0)	174 (8.4)	147 (10.9)			500 (2.7)	115 (5.4)	25 (1.0)	366 (8.8)
886 -	886	1,006 (3.7)	983 (6.5)	22 (0.2)	458 (2.4)	227 (5.0)	174 (8.4)	147 (10.9)			500 (2.7)	115 (5.4)	25 (1.0)	366 (8.8)
887 -	887	1,006 (3.7)	983 (6.5)	22 (0.2)	458 (2.4)	227 (5.0)	174 (8.4)	147 (10.9)			500 (2.7)	115 (5.4)	25 (1.0)	366 (8.8)
888 -	888	1,006 (3.7)	983 (6.5)	22 (0.2)	458 (2.4)	227 (5.0)	174 (8.4)	147 (10.9)			500 (2.7)	115 (5.4)	25 (1.0)	366 (8.8)
889 -	889	1,006 (3.7)	983 (6.5)	22 (0.2)	458 (2.4)	227 (5.0)	174 (8.4)	147 (10.9)			500 (2.7)	115 (5.4)	25 (1.0)	366 (8.8)
890 -	890	1,006 (3.7)	983 (6.5)	22 (0.2)	458 (2.4)	227 (5.0)	174 (8.4)	147 (10.9)			500 (2.7)	115 (5.4)	25 (1.0)	366 (8.8)
891 -	891	1,548 (5.6)	1,361 (9.0)	187 (1.5)	902 (4.6)	258 (5.6)	234 (11.2)	154 (11.4)			642 (3.5)	115 (5.4)	69 (2.9)	721 (17.3)
892 -	892	1,745 (6.4)	1,376 (9.1)	369 (3.0)	902 (4.6)	455 (10.0)	234 (11.2)	154 (11.4)			672 (3.7)	130 (6.1)	69 (2.9)	873 (21.0)
893 -	893	1,805 (6.6)	1,436 (9.5)	369 (3.0)	902 (4.6)	455 (10.0)	294 (14.1)	154 (11.4)			672 (3.7)	130 (6.1)	69 (2.9)	933 (22.4)
894 -	894	1,805 (6.6)	1,436 (9.5)	369 (3.0)	902 (4.6)	455 (10.0)	294 (14.1)	154 (11.4)			672 (3.7)	130 (6.1)	69 (2.9)	933 (22.4)
895 -	895	1,836 (6.7)	1,467 (9.7)	369 (3.0)	902 (4.6)	486 (10.6)	294 (14.1)	154 (11.4)			672 (3.7)	130 (6.1)	69 (2.9)	964 (23.2)
896 -	896	1,880 (6.9)	1,467 (9.7)	414 (3.4)	946 (4.9)	486 (10.6)	294 (14.1)	154 (11.4)			717 (3.9)	130 (6.1)	69 (2.9)	964 (23.2)
897 -	897	1,880 (6.9)	1,467 (9.7)	414 (3.4)	946 (4.9)	486 (10.6)	294 (14.1)	154 (11.4)			717 (3.9)	130 (6.1)	69 (2.9)	964 (23.2)
898 -	898	1,910 (7.0)	1,497 (9.9)	414 (3.4)	976 (5.0)	486 (10.6)	294 (14.1)	154 (11.4)			747 (4.1)	130 (6.1)	69 (2.9)	964 (23.2)
899 -	899	1,910 (7.0)	1,497 (9.9)	414 (3.4)	976 (5.0)	486 (10.6)	294 (14.1)	154 (11.4)			747 (4.1)	130 (6.1)	69 (2.9)	964 (23.2)
900 -	900	2,658 (9.7)	1,919 (12.7)	739 (6.0)	1,441 (7.4)	699 (15.3)	364 (17.5)	154 (11.4)		38 (11.0)	1,133 (6.2)	214 (10.1)	98 (4.1)	1,175 (28.2)
901 -	901	2,747 (10.0)	1,919 (12.7)	828 (6.7)	1,529 (7.9)	699 (15.3)	364 (17.5)	154 (11.4)		38 (11.0)	1,222 (6.7)	214 (10.1)	98 (4.1)	1,175 (28.2)
902 -	902	2,777 (10.1)	1,949 (12.9)	828 (6.7)	1,559 (8.0)	699 (15.3)	364 (17.5)	154 (11.4)		38 (11.0)	1,222 (6.7)	214 (10.1)	128 (5.3)	1,175 (28.2)
903 -	903	2,965 (10.8)	2,024 (13.4)	941 (7.7)	1,672 (8.6)	774 (16.9)	364 (17.5)	154 (11.4)		75 (22.0)	1,297 (7.1)	239 (11.2)	153 (6.4)	1,200 (28.8)
904 -	904	2,965 (10.8)	2,024 (13.4)	941 (7.7)	1,672 (8.6)	774 (16.9)	364 (17.5)	154 (11.4)		75 (22.0)	1,297 (7.1)	239 (11.2)	153 (6.4)	1,200 (28.8)
905 -	905	2,965 (10.8)	2,024 (13.4)	941 (7.7)	1,672 (8.6)	774 (16.9)	364 (17.5)	154 (11.4)		75 (22.0)	1,297 (7.1)	239 (11.2)	153 (6.4)	1,200 (28.8)
		3,159	2,173	986	1,866	774	364	154		75	1,387	284	153	1,260

906 -	906	(11.5)	(14.3)	(8.0)		(9.6)	(16.9)	(17.5)	(11.4)		(22.0)	(7.6)	(13.3)	(6.4)	(30.3)
		3,189	2,203	986		1,896	774	364	154		75	1,417	284	153	1,260
907 -	907	(11.6)	(14.5)	(8.0)		(9.8)	(16.9)	(17.5)	(11.4)		(22.0)	(7.7)	(13.3)	(6.4)	(30.3)
		3,189	2,203	986		1,896	774	364	154		75	1,417	284	153	1,260
908 -	908	(11.6)	(14.5)	(8.0)		(9.8)	(16.9)	(17.5)	(11.4)		(22.0)	(7.7)	(13.3)	(6.4)	(30.3)
		3,240	2,232	1,008		1,947	774	364	154		75	1,417	284	176	1,288
909 -	909	(11.8)	(14.7)	(8.2)		(10.0)	(16.9)	(17.5)	(11.4)		(22.0)	(7.7)	(13.3)	(7.3)	(31.0)
		3,264	2,256	1,008		1,947	774	388	154		75	1,440	284	176	1,288
910	910	(11.9)	(14.9)	(8.2)		(10.0)	(16.9)	(18.6)	(11.4)		(22.0)	(7.8)	(13.3)	(7.3)	(31.0)
		3,308	2,256	1,052		1,992	774	388	154		75	1,440	328	176	1,288
911	911	(12.1)	(14.9)	(8.6)		(10.2)	(16.9)	(18.6)	(11.4)		(22.0)	(7.8)	(15.4)	(7.3)	(31.0)
		3,308	2,256	1,052		1,992	774	388	154		75	1,440	328	176	1,288
912	912	(12.1)	(14.9)	(8.6)		(10.2)	(16.9)	(18.6)	(11.4)		(22.0)	(7.8)	(15.4)	(7.3)	(31.0)
		3,308	2,256	1,052		1,992	774	388	154		75	1,440	328	176	1,288
913	913	(12.1)	(14.9)	(8.6)		(10.2)	(16.9)	(18.6)	(11.4)		(22.0)	(7.8)	(15.4)	(7.3)	(31.0)
		3,308	2,256	1,052		1,992	774	388	154		75	1,440	328	176	1,288
914	914	(12.1)	(14.9)	(8.6)		(10.2)	(16.9)	(18.6)	(11.4)		(22.0)	(7.8)	(15.4)	(7.3)	(31.0)
		3,353	2,256	1,097		2,036	774	388	154		75	1,485	328	176	1,288
915	915	(12.2)	(14.9)	(8.9)		(10.5)	(16.9)	(18.6)	(11.4)		(22.0)	(8.1)	(15.4)	(7.3)	(31.0)
		3,353	2,256	1,097		2,036	774	388	154		75	1,485	328	176	1,288
916	916	(12.2)	(14.9)	(8.9)		(10.5)	(16.9)	(18.6)	(11.4)		(22.0)	(8.1)	(15.4)	(7.3)	(31.0)
		3,410	2,313	1,097		2,094	774	388	154		75	1,485	328	176	1,346
917	917	(12.4)	(15.3)	(8.9)		(10.8)	(16.9)	(18.6)	(11.4)		(22.0)	(8.1)	(15.4)	(7.3)	(32.3)
		3,410	2,313	1,097		2,094	774	388	154		75	1,485	328	176	1,346
918	918	(12.4)	(15.3)	(8.9)		(10.8)	(16.9)	(18.6)	(11.4)		(22.0)	(8.1)	(15.4)	(7.3)	(32.3)
		3,410	2,313	1,097		2,094	774	388	154		75	1,485	328	176	1,346
919	919	(12.4)	(15.3)	(8.9)		(10.8)	(16.9)	(18.6)	(11.4)		(22.0)	(8.1)	(15.4)	(7.3)	(32.3)
		4,348	2,528	1,820		2,963	789	411	184	15	75	1,774	403	447	1,633
920	920	(15.8)	(16.7)	(14.8)		(15.2)	(17.3)	(19.7)	(13.6)	(46.1)	(22.0)	(9.7)	(19.0)	(18.5)	(39.2)
		4,348	2,528	1,820		2,963	789	411	184	15	75	1,774	403	447	1,633
921	921	(15.8)	(16.7)	(14.8)		(15.2)	(17.3)	(19.7)	(13.6)	(46.1)	(22.0)	(9.7)	(19.0)	(18.5)	(39.2)
		4,348	2,528	1,820		2,963	789	411	184	15	75	1,774	403	447	1,633
922	922	(15.8)	(16.7)	(14.8)		(15.2)	(17.3)	(19.7)	(13.6)	(46.1)	(22.0)	(9.7)	(19.0)	(18.5)	(39.2)
		4,348	2,528	1,820		2,963	789	411	184	15	75	1,774	403	447	1,633
923	923	(15.8)	(16.7)	(14.8)		(15.2)	(17.3)	(19.7)	(13.6)	(46.1)	(22.0)	(9.7)	(19.0)	(18.5)	(39.2)
		4,348	2,528	1,820		2,963	789	411	184	15	75	1,774	403	447	1,633
924	924	(15.8)	(16.7)	(14.8)		(15.2)	(17.3)	(19.7)	(13.6)	(46.1)	(22.0)	(9.7)	(19.0)	(18.5)	(39.2)
		4,348	2,528	1,820		2,963	789	411	184	15	75	1,774	403	447	1,633
925	925	(15.8)	(16.7)	(14.8)		(15.2)	(17.3)	(19.7)	(13.6)	(46.1)	(22.0)	(9.7)	(19.0)	(18.5)	(39.2)
		4,348	2,528	1,820		2,963	789	411	184	15	75	1,774	403	447	1,633
926	926	(15.8)	(16.7)	(14.8)		(15.2)	(17.3)	(19.7)	(13.6)	(46.1)	(22.0)	(9.7)	(19.0)	(18.5)	(39.2)
		4,348	2,528	1,820		2,963	789	411	184	15	75	1,774	403	447	1,633
927	927	(15.8)	(16.7)	(14.8)		(15.2)	(17.3)	(19.7)	(13.6)	(46.1)	(22.0)	(9.7)	(19.0)	(18.5)	(39.2)
		4,348	2,528	1,820		2,963	789	411	184	15	75	1,774	403	447	1,633
928	928	(15.8)	(16.7)	(14.8)		(15.2)	(17.3)	(19.7)	(13.6)	(46.1)	(22.0)	(9.7)	(19.0)	(18.5)	(39.2)
		4,348	2,528	1,820		2,963	789	411	184	15	75	1,774	403	447	1,633
929	929	(15.8)	(16.7)	(14.8)		(15.2)	(17.3)	(19.7)	(13.6)	(46.1)	(22.0)	(9.7)	(19.0)	(18.5)	(39.2)
		5,011	2,670	2,341		3,449	967	411	184	15	75	2,024	444	566	1,887
930	930	(18.3)	(17.6)	(19.0)		(17.7)	(21.2)	(19.7)	(13.6)	(46.1)	(22.0)	(11.0)	(20.8)	(23.5)	(45.3)
		5,040	2,699	2,341		3,478	967	411	184	15	75	2,053	444	566	1,887
931	931	(18.4)	(17.8)	(19.0)		(17.9)	(21.2)	(19.7)	(13.6)	(46.1)	(22.0)	(11.2)	(20.8)	(23.5)	(45.3)
		5,070	2,729	2,341		3,508	967	411	184	15	75	2,053	444	596	1,887
932	932	(18.5)	(18.0)	(19.0)		(18.1)	(21.2)	(19.7)	(13.6)	(46.1)	(22.0)	(11.2)	(20.8)	(24.7)	(45.3)
		5,070	2,729	2,341		3,508	967	411	184	15	75	2,053	444	596	1,887
933	933	(18.5)	(18.0)	(19.0)		(18.1)	(21.2)	(19.7)	(13.6)	(46.1)	(22.0)	(11.2)	(20.8)	(24.7)	(45.3)
		5,128	2,787	2,341		3,566	967	411	184	15	75	2,081	444	596	1,916
934	934	(18.7)	(18.4)	(19.0)		(18.3)	(21.2)	(19.7)	(13.6)	(46.1)	(22.0)	(11.3)	(20.8)	(24.7)	(46.0)
		5,165	2,787	2,379		3,604	967	411	184	15	75	2,119	444	596	1,916
935	935	(18.8)	(18.4)	(19.3)		(18.5)	(21.2)	(19.7)	(13.6)	(46.1)	(22.0)	(11.5)	(20.8)	(24.7)	(46.0)

936	936	5,165 (18.8)	2,787 (18.4)	2,379 (19.3)		3,604 (18.5)	967 (21.2)	411 (19.7)	184 (13.6)	15 (46.1)	75 (22.0)	2,119 (11.5)	444 (20.8)	596 (24.7)	1,916 (46.0)
937	937	5,194 (18.9)	2,815 (18.6)	2,379 (19.3)		3,632 (18.7)	967 (21.2)	411 (19.7)	184 (13.6)	15 (46.1)	75 (22.0)	2,148 (11.7)	444 (20.8)	596 (24.7)	1,916 (46.0)
938	938	5,194 (18.9)	2,815 (18.6)	2,379 (19.3)		3,632 (18.7)	967 (21.2)	411 (19.7)	184 (13.6)	15 (46.1)	75 (22.0)	2,148 (11.7)	444 (20.8)	596 (24.7)	1,916 (46.0)
939	939	5,194 (18.9)	2,815 (18.6)	2,379 (19.3)		3,632 (18.7)	967 (21.2)	411 (19.7)	184 (13.6)	15 (46.1)	75 (22.0)	2,148 (11.7)	444 (20.8)	596 (24.7)	1,916 (46.0)
940	940	5,339 (19.5)	2,960 (19.5)	2,379 (19.3)		3,662 (18.8)	1,017 (22.3)	411 (19.7)	249 (18.4)	15 (46.1)	75 (22.0)	2,242 (12.2)	444 (20.8)	596 (24.7)	1,966 (47.2)
941	941	5,339 (19.5)	2,960 (19.5)	2,379 (19.3)		3,662 (18.8)	1,017 (22.3)	411 (19.7)	249 (18.4)	15 (46.1)	75 (22.0)	2,242 (12.2)	444 (20.8)	596 (24.7)	1,966 (47.2)
942	949	5,435 (19.8)	3,019 (19.9)	2,416 (19.7)		3,721 (19.1)	1,054 (23.1)	411 (19.7)	249 (18.4)	15 (46.1)	75 (22.0)	2,280 (12.4)	444 (20.8)	596 (24.7)	2,025 (48.6)
950	959	6,154 (22.4)	3,475 (22.9)	2,679 (21.8)		4,215 (21.7)	1,261 (27.6)	429 (20.6)	249 (18.4)	15 (46.1)	75 (22.0)	2,561 (13.9)	550 (25.8)	786 (32.6)	2,167 (52.1)
960	969	6,375 (23.2)	3,607 (23.8)	2,768 (22.5)		4,421 (22.7)	1,276 (27.9)	429 (20.6)	249 (18.4)	15 (46.1)	91 (26.5)	2,709 (14.8)	550 (25.8)	786 (32.6)	2,224 (53.4)
970	979	6,595 (24.0)	3,738 (24.7)	2,857 (23.2)		4,626 (23.8)	1,276 (27.9)	429 (20.6)	263 (19.5)	15 (46.1)	91 (26.5)	2,914 (15.9)	550 (25.8)	801 (33.2)	2,224 (53.4)
980	989	6,756 (24.6)	3,855 (25.5)	2,901 (23.6)		4,788 (24.6)	1,276 (27.9)	429 (20.6)	263 (19.5)	15 (46.1)	91 (26.5)	2,989 (16.3)	579 (27.2)	801 (33.2)	2,282 (54.8)
990	999	6,830 (24.9)	3,885 (25.6)	2,945 (24.0)		4,832 (24.9)	1,276 (27.9)	429 (20.6)	293 (21.6)	15 (46.1)	91 (26.5)	3,018 (16.4)	623 (29.3)	801 (33.2)	2,282 (54.8)
1000	1099	10,882 (39.7)	5,570 (36.8)	5,312 (43.2)		7,110 (36.6)	2,080 (45.5)	1,045 (50.1)	646 (47.8)	33 (100.0)	305 (89.0)	5,659 (30.8)	827 (38.8)	1,120 (46.5)	2,938 (70.6)
1100	1199	13,697 (49.9)	7,555 (49.9)	6,143 (50.0)		9,228 (47.5)	2,417 (52.9)	1,310 (62.9)	741 (54.8)		305 (89.0)	7,828 (42.6)	1,054 (49.5)	1,238 (51.4)	3,239 (77.8)
1200	1299	15,908 (58.0)	9,173 (60.6)	6,735 (54.8)		10,742 (55.3)	2,698 (59.1)	1,621 (77.8)	847 (62.6)		305 (89.0)	9,597 (52.3)	1,210 (56.9)	1,297 (53.9)	3,465 (83.2)
1300	1399	18,570 (67.7)	10,127 (66.9)	8,443 (68.7)		12,496 (64.3)	3,400 (74.4)	1,796 (86.2)	878 (64.9)		343 (100.0)	11,988 (65.3)	1,239 (58.2)	1,370 (56.9)	3,596 (86.4)
1400	1499	20,046 (73.1)	10,738 (70.9)	9,307 (75.7)		13,704 (70.5)	3,576 (78.3)	1,854 (89.0)	911 (67.4)			13,206 (71.9)	1,411 (66.3)	1,428 (59.3)	3,625 (87.1)
1500		27,440 (100.0)	15,147 (100.0)	12,293 (100.0)		19,435 (100.0)	4,568 (100.0)	2,084 (100.0)	1,353 (100.0)			18,365 (100.0)	2,129 (100.0)	2,408 (100.0)	4,163 (100.0)
月平均賃金額		198,912	203,295	193,513		209,388	169,477	166,019	198,488	49,303	116,399	210,736	217,156	206,073	141,268
時間当平均賃金額		1,399	1,358	1,450		1,460	1,251	1,183	1,363	963	1,031	1,456	1,497	1,402	1,132
月一人当たり労働時間数		142	147	136		146	127	137	146	51	114	148	138	141	122
第1・20分位数		891	800	900		898	891	795	800	920	900	900	848	902	780
第1・10分位数		901	900	920		909	895	891	848	920	900	930	900	920	891
第1・4分位数		1,000	982	1,000		1,000	950	1,006	1,017	920	969	1,039	950	950	900
中位数		1,200	1,200	1,200		1,220	1,150	1,090	1,153	1,000	1,011	1,269	1,204	1,155	950
四分位偏差係数		0.2279	0.2536	0.2002		0.2461	0.2110	0.1256	0.3418	0.0403	0.0402	0.2090	0.3914	0.3226	0.1370

【上段】

累積労働者数

【下段】

累積構成比

最低賃金引上げ額・率と影響率の関係表

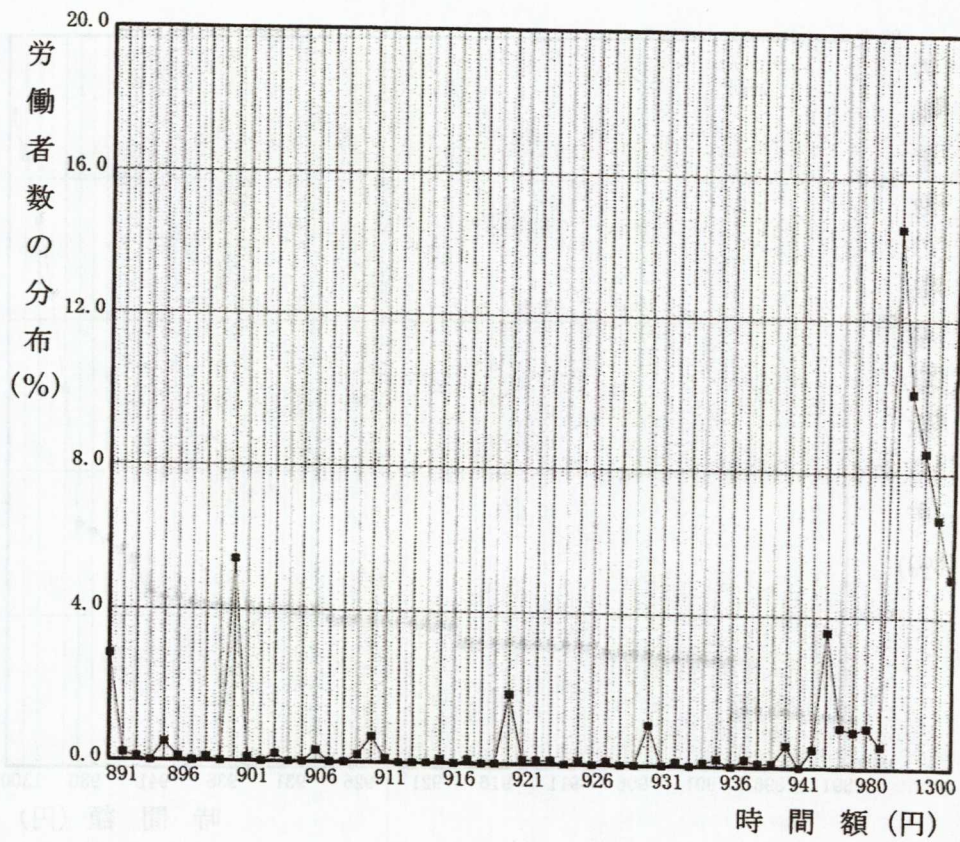
件名					
業種					
現行の最低賃金額	時間額	891円			
未満率	2.2%				
項番	時間額			影響率	未満労働者数
	引上げ額	引上げ率	引上げ後時間額		
1	0	0.00	891	2.22	3,511
2	1	0.11	892	5.07	8,021
3	2	0.22	893	5.31	8,390
4	3	0.34	894	5.44	8,607
5	4	0.45	895	5.44	8,607
6	5	0.56	896	5.91	9,348
7	6	0.67	897	6.00	9,485
8	7	0.79	898	6.00	9,485
9	8	0.90	899	6.05	9,570
10	9	1.01	900	6.07	9,603
11	10	1.12	901	11.59	18,327
12	11	1.23	902	11.65	18,416
13	12	1.35	903	11.67	18,446
14	13	1.46	904	11.84	18,725
15	14	1.57	905	11.84	18,725
16	15	1.68	906	11.89	18,799
17	16	1.80	907	12.19	19,274
18	17	1.91	908	12.22	19,325
19	18	2.02	909	12.26	19,384
20	19	2.13	910	12.44	19,661
21	20	2.24	911	13.10	20,708
22	21	2.36	912	13.23	20,916
23	22	2.47	913	13.23	20,916
24	23	2.58	914	13.27	20,972
25	24	2.69	915	13.31	21,038
26	25	2.81	916	13.38	21,155
27	26	2.92	917	13.41	21,199
28	27	3.03	918	13.49	21,322
29	28	3.14	919	13.52	21,366
30	29	3.25	920	13.52	21,366
31	30	3.37	921	15.37	24,295
32	31	3.48	922	15.45	24,424
33	32	3.59	923	15.53	24,554
34	33	3.70	924	15.64	24,729
35	34	3.82	925	15.67	24,776

最低賃金引上げ額・率と影響率の関係表

件名					
業種					
現行の最低賃金額		時間額		891円	
未満率		2.2%			
項番	時間額			影響率	未満労働者数
	引上げ額	引上げ率	引上げ後時間額		
36	35	3.93	926	15.79	24,962
37	36	4.04	927	15.81	24,994
38	37	4.15	928	15.90	25,143
39	38	4.26	929	15.90	25,143
40	39	4.38	930	15.92	25,164
41	40	4.49	931	17.01	26,888
42	41	4.60	932	17.04	26,942
43	42	4.71	933	17.12	27,065
44	43	4.83	934	17.17	27,140
45	44	4.94	935	17.22	27,223
46	45	5.05	936	17.40	27,513
47	46	5.16	937	17.44	27,569
48	47	5.27	938	17.60	27,830
49	48	5.39	939	17.66	27,918
50	49	5.50	940	17.77	28,093

B0-012-00 R 5. 7.20 * 2ページ

時間額に対するその該当労働者数の分布



時間額に対するその該当労働者数の累積度数分布

