

別冊1

最低賃金に関する基礎調査報告書
(令和4年6月実施)

石川労働局

業種別総括表及び最低賃金引上げ額・率と関係表

	ページ
1 地域別最低賃金適用産業総括表	1
2 地域別最低賃金適用産業製造業総括表	4
3 卸・小売業総括表	7
4 飲食店・旅館業総括表	10
5 医療・福祉業総括表	13
6 サービス業総括表	16
7 最低賃金引上げ額・率と影響率の関係表	19
8 時間額に対するその該当労働者数の分布(グラフ)	21
9 時間額に対するその該当労働者数の累積度数分布(グラフ)	22

総括表(1) (産業・就業形態別の賃金額階級別、規模別、地域別、年齢別表)

04年 総括表(1) 産業：地質適用産業のみ 就業形態：(全て) 産別適用除外含む全労働者

時間当り所定内賃金額 (3手当を除く)	合計	規模別			地域別				年齢別						
		1~9人	10~29人	30~99人	金沢	小松	七尾	穴水	17歳以下	18~19歳	20~54歳	55~59歳	60~64歳	65歳以上	
計	168,338	73,446	81,451	13,441	110,408	32,809	17,103	8,018	420	4,159	114,974	15,628	13,746	19,412	
円	1,694	1,196	218	279	761	332	488	112		61	989	98	127	419	
-	850	(1.0)	(1.6)	(0.3)	(2.1)	(0.7)	(1.0)	(2.9)	(1.4)	(1.5)	(0.9)	(0.6)	(0.9)	(2.2)	
851 -	851	1,694	1,196	218	279	761	332	488	112	61	989	98	127	419	
		(1.0)	(1.6)	(0.3)	(2.1)	(0.7)	(1.0)	(2.9)	(1.4)	(1.5)	(0.9)	(0.6)	(0.9)	(2.2)	
852 -	852	1,750	1,252	218	279	783	353	502	112	61	1,022	120	127	419	
		(1.0)	(1.7)	(0.3)	(2.1)	(0.7)	(1.1)	(2.9)	(1.4)	(1.5)	(0.9)	(0.8)	(0.9)	(2.2)	
853 -	853	1,750	1,252	218	279	783	353	502	112	61	1,022	120	127	419	
		(1.0)	(1.7)	(0.3)	(2.1)	(0.7)	(1.1)	(2.9)	(1.4)	(1.5)	(0.9)	(0.8)	(0.9)	(2.2)	
854 -	854	1,750	1,252	218	279	783	353	502	112	61	1,022	120	127	419	
		(1.0)	(1.7)	(0.3)	(2.1)	(0.7)	(1.1)	(2.9)	(1.4)	(1.5)	(0.9)	(0.8)	(0.9)	(2.2)	
855 -	855	1,750	1,252	218	279	783	353	502	112	61	1,022	120	127	419	
		(1.0)	(1.7)	(0.3)	(2.1)	(0.7)	(1.1)	(2.9)	(1.4)	(1.5)	(0.9)	(0.8)	(0.9)	(2.2)	
856 -	856	1,786	1,288	218	279	783	353	502	149	61	1,022	156	127	419	
		(1.1)	(1.8)	(0.3)	(2.1)	(0.7)	(1.1)	(2.9)	(1.9)	(1.5)	(0.9)	(1.0)	(0.9)	(2.2)	
857 -	857	1,786	1,288	218	279	783	353	502	149	61	1,022	156	127	419	
		(1.1)	(1.8)	(0.3)	(2.1)	(0.7)	(1.1)	(2.9)	(1.9)	(1.5)	(0.9)	(1.0)	(0.9)	(2.2)	
858 -	858	1,786	1,288	218	279	783	353	502	149	61	1,022	156	127	419	
		(1.1)	(1.8)	(0.3)	(2.1)	(0.7)	(1.1)	(2.9)	(1.9)	(1.5)	(0.9)	(1.0)	(0.9)	(2.2)	
859 -	859	1,786	1,288	218	279	783	353	502	149	61	1,022	156	127	419	
		(1.1)	(1.8)	(0.3)	(2.1)	(0.7)	(1.1)	(2.9)	(1.9)	(1.5)	(0.9)	(1.0)	(0.9)	(2.2)	
860 -	860	1,833	1,335	218	279	783	380	521	149	61	1,042	156	127	446	
		(1.1)	(1.8)	(0.3)	(2.1)	(0.7)	(1.2)	(3.0)	(1.9)	(1.5)	(0.9)	(1.0)	(0.9)	(2.3)	
861 -	861	4,403	2,862	1,078	463	1,454	1,111	1,047	792	24	85	2,353	436	449	1,056
		(2.6)	(3.9)	(1.3)	(3.4)	(1.3)	(3.4)	(6.1)	(9.9)	(5.8)	(2.1)	(2.0)	(2.8)	(3.3)	(5.4)
862 -	862	4,478	2,883	1,078	518	1,454	1,131	1,047	847	24	85	2,371	470	470	1,092
		(2.7)	(3.9)	(1.3)	(3.9)	(1.3)	(3.4)	(6.1)	(10.6)	(5.8)	(2.1)	(2.1)	(2.8)	(3.4)	(5.6)
863 -	863	4,541	2,945	1,078	518	1,454	1,151	1,061	875	24	85	2,384	436	484	1,127
		(2.7)	(4.0)	(1.3)	(3.9)	(1.3)	(3.5)	(6.2)	(10.9)	(5.8)	(2.1)	(2.1)	(2.8)	(3.5)	(5.8)
864 -	864	4,722	3,092	1,078	551	1,454	1,333	1,061	875	24	85	2,475	436	557	1,145
		(2.8)	(4.2)	(1.3)	(4.1)	(1.3)	(4.1)	(6.2)	(10.9)	(5.8)	(2.1)	(2.2)	(2.8)	(4.0)	(5.9)
865 -	865	7,176	3,651	2,973	551	2,153	1,696	2,198	1,130	125	160	3,949	569	869	1,505
		(4.3)	(5.0)	(3.7)	(4.1)	(2.0)	(5.2)	(12.8)	(14.1)	(29.8)	(3.8)	(3.4)	(3.6)	(6.3)	(7.8)
866 -	866	7,176	3,651	2,973	551	2,153	1,696	2,198	1,130	125	160	3,949	569	869	1,505
		(4.3)	(5.0)	(3.7)	(4.1)	(2.0)	(5.2)	(12.8)	(14.1)	(29.8)	(3.8)	(3.4)	(3.6)	(6.3)	(7.8)
867 -	867	7,176	3,651	2,973	551	2,153	1,696	2,198	1,130	125	160	3,949	569	869	1,505
		(4.3)	(5.0)	(3.7)	(4.1)	(2.0)	(5.2)	(12.8)	(14.1)	(29.8)	(3.8)	(3.4)	(3.6)	(6.3)	(7.8)
868 -	868	7,176	3,651	2,973	551	2,153	1,696	2,198	1,130	125	160	3,949	569	869	1,505
		(4.3)	(5.0)	(3.7)	(4.1)	(2.0)	(5.2)	(12.8)	(14.1)	(29.8)	(3.8)	(3.4)	(3.6)	(6.3)	(7.8)
869 -	869	7,210	3,651	2,973	585	2,153	1,729	2,198	1,130	125	160	3,983	569	869	1,505
		(4.3)	(5.0)	(3.7)	(4.4)	(2.0)	(5.3)	(12.8)	(14.1)	(29.8)	(3.8)	(3.5)	(3.6)	(6.3)	(7.8)
870 -	870	12,261	5,384	4,302	2,575	6,540	2,076	2,258	1,386	125	300	7,420	1,010	1,220	2,186
		(7.3)	(7.3)	(5.3)	(19.2)	(5.9)	(6.3)	(13.2)	(17.3)	(29.8)	(7.2)	(6.5)	(6.5)	(8.9)	(11.3)
871 -	871	12,280	5,384	4,321	2,575	6,540	2,095	2,258	1,386	125	300	7,439	1,010	1,220	2,186
		(7.3)	(7.3)	(5.3)	(19.2)	(5.9)	(6.4)	(13.2)	(17.3)	(29.8)	(7.2)	(6.5)	(6.5)	(8.9)	(11.3)
872 -	872	12,329	5,384	4,370	2,575	6,540	2,095	2,308	1,386	125	300	7,489	1,010	1,220	2,186
		(7.3)	(7.3)	(5.4)	(19.2)	(5.9)	(6.4)	(13.5)	(17.3)	(29.8)	(7.2)	(6.5)	(6.5)	(8.9)	(11.3)
873 -	873	12,662	5,411	4,370	2,881	6,540	2,123	2,613	1,386	125	300	7,794	1,010	1,248	2,186
		(7.5)	(7.4)	(5.4)	(21.4)	(5.9)	(6.5)	(15.3)	(17.3)	(29.8)	(7.2)	(6.8)	(6.5)	(9.1)	(11.3)
874 -	874	12,990	5,411	4,393	3,186	6,563	2,123	2,919	1,386	125	300	8,122	1,010	1,248	2,186
		(7.7)	(7.4)	(5.4)	(23.7)	(5.9)	(6.5)	(17.1)	(17.3)	(29.8)	(7.2)	(7.1)	(6.5)	(9.1)	(11.3)

875 - 875	13,836 (8.2)	5,848 (8.0)	4,513 (5.5)	3,474 (25.8)	7,366 (6.7)	2,123 (6.5)	2,919 (17.1)	1,429 (17.8)	125 (29.8)	300 (7.2)	8,531 (7.4)	1,010 (6.5)	1,248 (9.1)	2,623 (13.5)
876 - 876	13,836 (8.2)	5,848 (8.0)	4,513 (5.5)	3,474 (25.8)	7,366 (6.7)	2,123 (6.5)	2,919 (17.1)	1,429 (17.8)	125 (29.8)	300 (7.2)	8,531 (7.4)	1,010 (6.5)	1,248 (9.1)	2,623 (13.5)
877 - 877	13,985 (8.3)	5,997 (8.2)	4,513 (5.5)	3,474 (25.8)	7,497 (6.8)	2,141 (6.5)	2,919 (17.1)	1,429 (17.8)	125 (29.8)	300 (7.2)	8,531 (7.4)	1,010 (6.5)	1,266 (9.2)	2,753 (14.2)
878 - 878	14,056 (8.3)	6,039 (8.2)	4,542 (5.6)	3,474 (25.8)	7,519 (6.8)	2,190 (6.7)	2,919 (17.1)	1,429 (17.8)	125 (29.8)	300 (7.2)	8,573 (7.5)	1,010 (6.5)	1,266 (9.2)	2,782 (14.3)
879 - 879	14,130 (8.4)	6,039 (8.2)	4,617 (5.7)	3,474 (25.8)	7,579 (6.9)	2,204 (6.7)	2,919 (17.1)	1,429 (17.8)	125 (29.8)	300 (7.2)	8,634 (7.5)	1,010 (6.5)	1,266 (9.2)	2,797 (14.4)
880	16,257 (9.7)	7,379 (10.0)	5,158 (6.3)	3,720 (27.7)	8,391 (7.6)	2,747 (8.4)	3,344 (19.5)	1,775 (22.1)	125 (29.8)	357 (8.6)	10,104 (8.8)	1,126 (7.2)	1,404 (10.2)	3,142 (16.2)
881	16,299 (9.7)	7,420 (10.1)	5,158 (6.3)	3,720 (27.7)	8,391 (7.6)	2,747 (8.4)	3,344 (19.5)	1,817 (22.7)	125 (29.8)	357 (8.6)	10,145 (8.8)	1,126 (7.2)	1,404 (10.2)	3,142 (16.2)
882	16,343 (9.7)	7,464 (10.2)	5,158 (6.3)	3,720 (27.7)	8,435 (7.6)	2,747 (8.4)	3,344 (19.5)	1,817 (22.7)	125 (29.8)	357 (8.6)	10,189 (8.9)	1,126 (7.2)	1,404 (10.2)	3,142 (16.2)
883	16,343 (9.7)	7,464 (10.2)	5,158 (6.3)	3,720 (27.7)	8,435 (7.6)	2,747 (8.4)	3,344 (19.5)	1,817 (22.7)	125 (29.8)	357 (8.6)	10,189 (8.9)	1,126 (7.2)	1,404 (10.2)	3,142 (16.2)
884	16,443 (9.8)	7,506 (10.2)	5,183 (6.4)	3,754 (27.9)	8,477 (7.7)	2,805 (8.6)	3,344 (19.5)	1,817 (22.7)	125 (29.8)	357 (8.6)	10,290 (8.9)	1,126 (7.2)	1,404 (10.2)	3,142 (16.2)
885	16,481 (9.8)	7,544 (10.3)	5,183 (6.4)	3,754 (27.9)	8,477 (7.7)	2,823 (8.6)	3,363 (19.7)	1,817 (22.7)	125 (29.8)	357 (8.6)	10,327 (9.0)	1,126 (7.2)	1,404 (10.2)	3,142 (16.2)
886	16,552 (9.8)	7,615 (10.4)	5,183 (6.4)	3,754 (27.9)	8,477 (7.7)	2,853 (8.7)	3,363 (19.7)	1,859 (23.2)	125 (29.8)	357 (8.6)	10,369 (9.0)	1,126 (7.2)	1,404 (10.2)	3,172 (16.3)
887	16,579 (9.8)	7,642 (10.4)	5,183 (6.4)	3,754 (27.9)	8,477 (7.7)	2,880 (8.8)	3,363 (19.7)	1,859 (23.2)	125 (29.8)	357 (8.6)	10,396 (9.0)	1,126 (7.2)	1,404 (10.2)	3,172 (16.3)
888	16,609 (9.9)	7,672 (10.4)	5,183 (6.4)	3,754 (27.9)	8,477 (7.7)	2,909 (8.9)	3,363 (19.7)	1,859 (23.2)	125 (29.8)	357 (8.6)	10,396 (9.0)	1,126 (7.2)	1,404 (10.2)	3,201 (16.5)
889	16,632 (9.9)	7,672 (10.4)	5,205 (6.4)	3,754 (27.9)	8,500 (7.7)	2,909 (8.9)	3,363 (19.7)	1,859 (23.2)	125 (29.8)	357 (8.6)	10,396 (9.0)	1,149 (7.4)	1,404 (10.2)	3,201 (16.5)
890	17,568 (10.4)	8,072 (11.0)	5,470 (6.7)	4,026 (30.0)	8,904 (8.1)	2,973 (9.1)	3,568 (20.9)	2,123 (26.5)	125 (29.8)	401 (9.6)	11,031 (9.6)	1,297 (8.3)	1,445 (10.5)	3,268 (16.8)
891	17,724 (10.5)	8,228 (11.2)	5,470 (6.7)	4,026 (30.0)	9,060 (8.2)	2,973 (9.1)	3,568 (20.9)	2,123 (26.5)	125 (29.8)	401 (9.6)	11,135 (9.7)	1,297 (8.3)	1,498 (10.9)	3,268 (16.8)
892	17,915 (10.6)	8,315 (11.3)	5,574 (6.8)	4,026 (30.0)	9,104 (8.2)	3,016 (9.2)	3,672 (21.5)	2,123 (26.5)	125 (29.8)	401 (9.6)	11,326 (9.9)	1,297 (8.3)	1,498 (10.9)	3,268 (16.8)
893	17,959 (10.7)	8,358 (11.4)	5,574 (6.8)	4,026 (30.0)	9,148 (8.3)	3,016 (9.2)	3,672 (21.5)	2,123 (26.5)	125 (29.8)	401 (9.6)	11,326 (9.9)	1,297 (8.3)	1,498 (10.9)	3,311 (17.1)
894	18,013 (10.7)	8,413 (11.5)	5,574 (6.8)	4,026 (30.0)	9,148 (8.3)	3,071 (9.4)	3,672 (21.5)	2,123 (26.5)	125 (29.8)	401 (9.6)	11,380 (9.9)	1,297 (8.3)	1,498 (10.9)	3,311 (17.1)
895	18,069 (10.7)	8,469 (11.5)	5,574 (6.8)	4,026 (30.0)	9,192 (8.3)	3,083 (9.4)	3,672 (21.5)	2,123 (26.5)	125 (29.8)	401 (9.6)	11,402 (9.9)	1,309 (8.4)	1,498 (10.9)	3,333 (17.2)
896	18,416 (10.9)	8,510 (11.6)	5,845 (7.2)	4,060 (30.2)	9,252 (8.4)	3,278 (10.0)	3,722 (21.8)	2,164 (27.0)	125 (29.8)	401 (9.6)	11,671 (10.2)	1,309 (8.4)	1,547 (11.3)	3,362 (17.3)
897	18,527 (11.0)	8,554 (11.6)	5,912 (7.3)	4,060 (30.2)	9,363 (8.5)	3,278 (10.0)	3,722 (21.8)	2,164 (27.0)	125 (29.8)	401 (9.6)	11,715 (10.2)	1,353 (8.7)	1,570 (11.4)	3,362 (17.3)
898	18,628 (11.1)	8,597 (11.7)	5,937 (7.3)	4,094 (30.5)	9,363 (8.5)	3,379 (10.3)	3,722 (21.8)	2,164 (27.0)	125 (29.8)	401 (9.6)	11,817 (10.3)	1,353 (8.7)	1,570 (11.4)	3,362 (17.3)
899	18,662 (11.1)	8,597 (11.7)	5,937 (7.3)	4,128 (30.7)	9,363 (8.5)	3,413 (10.4)	3,722 (21.8)	2,164 (27.0)	125 (29.8)	401 (9.6)	11,851 (10.3)	1,353 (8.7)	1,570 (11.4)	3,362 (17.3)
900	27,246 (16.2)	12,624 (17.2)	10,141 (12.5)	4,482 (33.3)	15,087 (13.7)	5,023 (15.3)	4,392 (25.7)	2,743 (34.2)	178 (42.3)	1,370 (32.9)	16,174 (14.1)	1,933 (12.4)	2,474 (18.0)	5,119 (26.4)
901	27,296 (16.2)	12,651 (17.2)	10,163 (12.5)	4,482 (33.3)	15,110 (13.7)	5,051 (15.4)	4,392 (25.7)	2,743 (34.2)	178 (42.3)	1,370 (32.9)	16,201 (14.1)	1,933 (12.4)	2,474 (18.0)	5,141 (26.5)
902	27,358 (16.3)	12,651 (17.2)	10,163 (12.5)	4,543 (33.8)	15,110 (13.7)	5,051 (15.4)	4,453 (26.0)	2,743 (34.2)	178 (42.3)	1,370 (32.9)	16,262 (14.1)	1,933 (12.4)	2,474 (18.0)	5,141 (26.5)

903	903	27,477 (16.3)	12,722 (17.3)	10,213 (12.5)	4,543 (33.8)	15,166 (13.7)	5,051 (15.4)	4,503 (26.3)	2,758 (34.4)	178 (42.3)	1,370 (32.9)	16,382 (14.2)	1,933 (12.4)	2,474 (18.0)	5,141 (26.5)
904	904	27,605 (16.4)	12,849 (17.5)	10,213 (12.5)	4,543 (33.8)	15,208 (13.8)	5,094 (15.5)	4,503 (26.3)	2,799 (34.9)	178 (42.3)	1,370 (32.9)	16,467 (14.3)	1,933 (12.4)	2,474 (18.0)	5,184 (26.7)
905	905	27,758 (16.5)	12,972 (17.7)	10,243 (12.6)	4,543 (33.8)	15,314 (13.9)	5,111 (15.6)	4,503 (26.3)	2,830 (35.3)	178 (42.3)	1,370 (32.9)	16,537 (14.4)	1,963 (12.6)	2,527 (18.4)	5,184 (26.7)
906	906	27,814 (16.5)	12,994 (17.7)	10,243 (12.6)	4,577 (34.1)	15,336 (13.9)	5,145 (15.7)	4,503 (26.3)	2,830 (35.3)	178 (42.3)	1,370 (32.9)	16,593 (14.4)	1,963 (12.6)	2,527 (18.4)	5,184 (26.7)
907	907	27,910 (16.6)	12,994 (17.7)	10,243 (12.6)	4,673 (34.8)	15,432 (14.0)	5,145 (15.7)	4,503 (26.3)	2,830 (35.3)	178 (42.3)	1,370 (32.9)	16,689 (14.5)	1,963 (12.6)	2,527 (18.4)	5,184 (26.7)
908	908	27,910 (16.6)	12,994 (17.7)	10,243 (12.6)	4,673 (34.8)	15,432 (14.0)	5,145 (15.7)	4,503 (26.3)	2,830 (35.3)	178 (42.3)	1,370 (32.9)	16,689 (14.5)	1,963 (12.6)	2,527 (18.4)	5,184 (26.7)
909	909	28,085 (16.7)	13,150 (17.9)	10,262 (12.6)	4,673 (34.8)	15,488 (14.0)	5,265 (16.0)	4,503 (26.3)	2,830 (35.3)	178 (42.3)	1,370 (32.9)	16,777 (14.6)	1,982 (12.7)	2,527 (18.4)	5,252 (27.1)
910	910	28,927 (17.2)	13,696 (18.6)	10,524 (12.9)	4,707 (35.0)	15,830 (14.3)	5,613 (17.1)	4,634 (27.1)	2,850 (35.5)	267 (63.5)	1,459 (35.1)	17,199 (15.0)	2,030 (13.0)	2,647 (19.3)	5,325 (27.4)
911	911	28,949 (17.2)	13,718 (18.7)	10,524 (12.9)	4,707 (35.0)	15,830 (14.3)	5,613 (17.1)	4,655 (27.2)	2,850 (35.5)	267 (63.5)	1,459 (35.1)	17,221 (15.0)	2,030 (13.0)	2,647 (19.3)	5,325 (27.4)
912	919	29,869 (17.7)	14,082 (19.2)	10,962 (13.5)	4,825 (35.9)	16,309 (14.8)	5,795 (17.7)	4,837 (28.3)	2,929 (36.5)	267 (63.5)	1,459 (35.1)	17,829 (15.5)	2,213 (14.2)	2,712 (19.7)	5,389 (27.8)
920	929	33,970 (20.2)	15,342 (20.9)	13,545 (16.6)	5,083 (37.8)	19,494 (17.7)	6,435 (19.6)	5,085 (29.7)	2,957 (36.9)	340 (80.9)	1,813 (43.6)	20,717 (18.0)	2,354 (15.1)	2,822 (20.5)	5,925 (30.5)
930	939	36,339 (21.6)	16,697 (22.7)	14,429 (17.7)	5,213 (38.8)	21,163 (19.2)	6,813 (20.8)	5,217 (30.5)	3,146 (39.2)	340 (80.9)	1,971 (47.4)	22,437 (19.5)	2,517 (16.1)	3,013 (21.9)	6,061 (31.2)
940	949	38,041 (22.6)	17,907 (24.4)	14,819 (18.2)	5,315 (39.5)	22,437 (20.3)	6,995 (21.3)	5,346 (31.3)	3,263 (40.7)	340 (80.9)	2,171 (52.2)	23,583 (20.5)	2,567 (16.4)	3,183 (23.2)	6,197 (31.9)
950	959	42,764 (25.4)	20,663 (28.1)	16,505 (20.3)	5,595 (41.6)	25,387 (23.0)	7,980 (24.3)	5,732 (33.5)	3,665 (45.7)	340 (80.9)	2,588 (62.2)	26,850 (23.4)	2,827 (18.1)	3,447 (25.1)	6,712 (34.6)
960	969	44,681 (26.5)	21,503 (29.3)	17,497 (21.5)	5,682 (42.3)	26,246 (23.8)	8,721 (26.6)	5,864 (34.3)	3,851 (48.0)	376 (89.6)	2,615 (62.9)	28,089 (24.4)	2,996 (19.2)	3,551 (25.8)	7,053 (36.3)
970	979	46,465 (27.6)	22,064 (30.0)	18,493 (22.7)	5,907 (43.9)	27,241 (24.7)	9,212 (28.1)	5,976 (34.9)	4,036 (50.3)	376 (89.6)	2,659 (63.9)	29,226 (25.4)	3,208 (20.5)	3,624 (26.4)	7,370 (38.0)
980	989	48,327 (28.7)	22,674 (30.9)	19,597 (24.1)	6,056 (45.1)	28,205 (25.5)	9,835 (30.0)	6,089 (35.6)	4,198 (52.4)	376 (89.6)	2,832 (68.1)	30,387 (26.4)	3,286 (21.0)	3,879 (28.2)	7,566 (39.0)
990	999	49,386 (29.3)	23,373 (31.8)	19,897 (24.4)	6,117 (45.5)	29,017 (26.3)	9,923 (30.2)	6,241 (36.5)	4,206 (52.5)	376 (89.6)	2,832 (68.1)	31,186 (27.1)	3,375 (21.6)	3,965 (28.8)	7,652 (39.4)
1000	1099	76,381 (45.4)	34,230 (46.6)	34,217 (42.0)	7,934 (59.0)	45,628 (41.3)	15,791 (48.1)	9,873 (57.7)	5,089 (63.5)	420 (100.0)	4,159 (100.0)	48,744 (42.4)	5,006 (32.0)	6,283 (45.7)	11,769 (60.6)
1100	1199	91,263 (54.2)	40,828 (55.6)	41,625 (51.1)	8,810 (65.5)	56,222 (50.9)	18,481 (56.3)	10,970 (64.1)	5,591 (69.7)			59,784 (52.0)	6,416 (41.1)	7,463 (54.3)	13,021 (67.1)
1200	1299	104,501 (62.1)	46,753 (63.7)	47,478 (58.3)	10,270 (76.4)	65,555 (59.4)	21,179 (64.6)	11,613 (67.9)	6,154 (76.8)			68,854 (59.9)	7,863 (50.3)	8,299 (60.4)	14,906 (76.8)
1300	1399	114,604 (68.1)	51,143 (69.6)	52,593 (64.6)	10,869 (80.9)	72,067 (65.3)	23,727 (72.3)	12,455 (72.8)	6,355 (79.3)			76,594 (66.6)	8,666 (55.5)	9,032 (65.7)	15,733 (81.0)
1400	1499	123,871 (73.6)	55,024 (74.9)	57,782 (70.9)	11,066 (82.3)	78,626 (71.2)	25,137 (76.6)	13,243 (77.4)	6,864 (85.6)			83,134 (72.3)	9,551 (61.1)	9,844 (71.6)	16,764 (86.4)
1500		168,338 (100.0)	73,446 (100.0)	81,451 (100.0)	13,441 (100.0)	110,408 (100.0)	32,809 (100.0)	17,103 (100.0)	8,018 (100.0)			114,974 (100.0)	15,628 (100.0)	13,746 (100.0)	19,412 (100.0)
月平均賃金額		192,024	183,225	200,012	191,691	198,239	186,712	177,230	159,730	42,654	51,040	202,169	233,022	187,886	135,299
時間当平均賃金額		1,333	1,308	1,382	1,170	1,371	1,305	1,226	1,153	911	944	1,347	1,509	1,348	1,186
月一人当たり労働時間数		138	135	137	162	138	139	138	146	47	54	146	149	135	108
第1・2 0分位数		870	870	870	870	870	865	861	861	861	870	870	870	865	861
第1・1 0分位数		890	880	900	870	900	898	865	865	865	900	896	900	880	870
第1・4 分位数		952	950	1,000	875	980	960	900	890	865	900	975	1,010	955	900
中位		1,140	1,130	1,180	1,023	1,187	1,120	1,032	976	910	940	1,176	1,296	1,137	1,000
四分位偏差係数		0.2499	0.2435	0.2446	0.2036	0.2458	0.2195	0.2598	0.2017	0.0306	0.0533	0.2406	0.3117	0.2622	0.1902

【上段】

累積労働者数

【下段】

累積構成比

総括表(1) (産業・就業形態別の賃金額階級別、規模別、地域別、年齢別表)

04年 総括表(1) 産業：製造業(特異適用産業除く) 就業形態：(全て) 産別適用除外含む全労働者

時間当り所定内賃金額 (3手当を除く)	合計	規模別			地域別				年齢別					
		1~9人	10~29人	30~99人	金沢	小松	七尾	穴水	17歳以下	18~19歳	20~54歳	55~59歳	60~64歳	65歳以上
計	34,743	8,821	12,576	13,346	17,163	10,690	4,831	2,059		75	24,144	3,237	3,154	4,133
円	583	303		279	228	89	251	14		61	404	30	30	58
-	850	(1.7)	(3.4)	(2.1)	(1.3)	(0.8)	(5.2)	(0.7)		(81.8)	(1.7)	(0.9)	(0.9)	(1.4)
851 -	851	(1.7)	(3.4)	(2.1)	(1.3)	(0.8)	(5.2)	(0.7)		(81.8)	(1.7)	(0.9)	(0.9)	(1.4)
	618	339		279	250	89	265	14		61	418	52	30	58
852 -	852	(1.8)	(3.8)	(2.1)	(1.5)	(0.8)	(5.5)	(0.7)		(81.8)	(1.7)	(1.6)	(0.9)	(1.4)
	618	339		279	250	89	265	14		61	418	52	30	58
853 -	853	(1.8)	(3.8)	(2.1)	(1.5)	(0.8)	(5.5)	(0.7)		(81.8)	(1.7)	(1.6)	(0.9)	(1.4)
	618	339		279	250	89	265	14		61	418	52	30	58
854 -	854	(1.8)	(3.8)	(2.1)	(1.5)	(0.8)	(5.5)	(0.7)		(81.8)	(1.7)	(1.6)	(0.9)	(1.4)
	618	339		279	250	89	265	14		61	418	52	30	58
855 -	855	(1.8)	(3.8)	(2.1)	(1.5)	(0.8)	(5.5)	(0.7)		(81.8)	(1.7)	(1.6)	(0.9)	(1.4)
	618	339		279	250	89	265	14		61	418	52	30	58
856 -	856	(1.8)	(3.8)	(2.1)	(1.5)	(0.8)	(5.5)	(0.7)		(81.8)	(1.7)	(1.6)	(0.9)	(1.4)
	618	339		279	250	89	265	14		61	418	52	30	58
857 -	857	(1.8)	(3.8)	(2.1)	(1.5)	(0.8)	(5.5)	(0.7)		(81.8)	(1.7)	(1.6)	(0.9)	(1.4)
	618	339		279	250	89	265	14		61	418	52	30	58
858 -	858	(1.8)	(3.8)	(2.1)	(1.5)	(0.8)	(5.5)	(0.7)		(81.8)	(1.7)	(1.6)	(0.9)	(1.4)
	618	339		279	250	89	265	14		61	418	52	30	58
859 -	859	(1.8)	(3.8)	(2.1)	(1.5)	(0.8)	(5.5)	(0.7)		(81.8)	(1.7)	(1.6)	(0.9)	(1.4)
	618	339		279	250	89	265	14		61	418	52	30	58
860 -	860	(1.8)	(3.8)	(2.1)	(1.5)	(0.8)	(5.5)	(0.7)		(81.8)	(1.7)	(1.6)	(0.9)	(1.4)
	1,341	698	180	463	476	177	653	35		61	822	124	133	200
861 -	861	(3.9)	(7.9)	(1.4)	(3.5)	(2.8)	(1.7)	(13.5)	(1.7)	(81.8)	(3.4)	(3.8)	(4.2)	(4.8)
	1,396	698	180	476	476	177	653	90		61	840	124	133	237
862 -	862	(4.0)	(7.9)	(1.4)	(3.9)	(2.8)	(1.7)	(13.5)	(4.3)	(81.8)	(3.5)	(3.8)	(4.2)	(5.7)
	1,438	740	180	518	476	177	666	118		61	854	124	148	251
863 -	863	(4.1)	(8.4)	(1.4)	(3.9)	(2.8)	(1.7)	(13.8)	(5.7)	(81.8)	(3.5)	(3.8)	(4.7)	(6.1)
	1,472	740	180	551	476	211	666	118		61	888	124	148	251
864 -	864	(4.2)	(8.4)	(1.4)	(4.1)	(2.8)	(2.0)	(13.8)	(5.7)	(81.8)	(3.7)	(3.8)	(4.7)	(6.1)
	2,363	799	1,013	551	476	271	1,458	159		61	1,333	154	326	490
865 -	865	(6.8)	(9.1)	(8.1)	(4.1)	(2.8)	(2.5)	(30.2)	(7.7)	(81.8)	(5.5)	(4.8)	(10.3)	(11.8)
	2,363	799	1,013	551	476	271	1,458	159		61	1,333	154	326	490
866 -	866	(6.8)	(9.1)	(8.1)	(4.1)	(2.8)	(2.5)	(30.2)	(7.7)	(81.8)	(5.5)	(4.8)	(10.3)	(11.8)
	2,363	799	1,013	551	476	271	1,458	159		61	1,333	154	326	490
867 -	867	(6.8)	(9.1)	(8.1)	(4.1)	(2.8)	(2.5)	(30.2)	(7.7)	(81.8)	(5.5)	(4.8)	(10.3)	(11.8)
	2,363	799	1,013	551	476	271	1,458	159		61	1,333	154	326	490
868 -	868	(6.8)	(9.1)	(8.1)	(4.1)	(2.8)	(2.5)	(30.2)	(7.7)	(81.8)	(5.5)	(4.8)	(10.3)	(11.8)
	2,397	799	1,013	585	476	304	1,458	159		61	1,367	154	326	490
869 -	869	(6.9)	(9.1)	(8.1)	(4.4)	(2.8)	(2.8)	(30.2)	(7.7)	(81.8)	(5.7)	(4.8)	(10.3)	(11.8)
	5,115	1,214	1,326	2,575	2,870	510	1,499	236		61	3,204	410	653	786
870 -	870	(14.7)	(13.8)	(10.5)	(19.3)	(16.7)	(4.8)	(31.0)	(11.5)	(81.8)	(13.3)	(12.7)	(20.7)	(19.0)
	5,134	1,214	1,345	2,575	2,870	529	1,499	236		61	3,223	410	653	786
871 -	871	(14.8)	(13.8)	(10.7)	(19.3)	(16.7)	(4.9)	(31.0)	(11.5)	(81.8)	(13.3)	(12.7)	(20.7)	(19.0)
	5,183	1,214	1,394	2,575	2,870	529	1,548	236		61	3,273	410	653	786
872 -	872	(14.9)	(13.8)	(11.1)	(19.3)	(16.7)	(4.9)	(32.1)	(11.5)	(81.8)	(13.6)	(12.7)	(20.7)	(19.0)
	5,488	1,214	1,394	2,881	2,870	529	1,854	236		61	3,578	410	653	786
873 -	873	(15.8)	(13.8)	(11.1)	(21.6)	(16.7)	(4.9)	(38.4)	(11.5)	(81.8)	(14.8)	(12.7)	(20.7)	(19.0)
	5,817	1,214	1,417	3,186	2,893	529	2,159	236		61	3,906	410	653	786
874 -	874	(16.7)	(13.8)	(11.3)	(23.9)	(16.9)	(4.9)	(44.7)	(11.5)	(81.8)	(16.2)	(12.7)	(20.7)	(19.0)

875 - 875	6,148 (17.7)	1,256 (14.2)	1,417 (11.3)	3,474 (26.0)	3,181 (18.5)	529 (4.9)	2,159 (44.7)	279 (13.5)		61 (81.8)	4,195 (17.4)	410 (12.7)	653 (20.7)	829 (20.1)
876 - 876	6,148 (17.7)	1,256 (14.2)	1,417 (11.3)	3,474 (26.0)	3,181 (18.5)	529 (4.9)	2,159 (44.7)	279 (13.5)		61 (81.8)	4,195 (17.4)	410 (12.7)	653 (20.7)	829 (20.1)
877 - 877	6,148 (17.7)	1,256 (14.2)	1,417 (11.3)	3,474 (26.0)	3,181 (18.5)	529 (4.9)	2,159 (44.7)	279 (13.5)		61 (81.8)	4,195 (17.4)	410 (12.7)	653 (20.7)	829 (20.1)
878 - 878	6,170 (17.8)	1,278 (14.5)	1,417 (11.3)	3,474 (26.0)	3,203 (18.7)	529 (4.9)	2,159 (44.7)	279 (13.5)		61 (81.8)	4,217 (17.5)	410 (12.7)	653 (20.7)	829 (20.1)
879 - 879	6,170 (17.8)	1,278 (14.5)	1,417 (11.3)	3,474 (26.0)	3,203 (18.7)	529 (4.9)	2,159 (44.7)	279 (13.5)		61 (81.8)	4,217 (17.5)	410 (12.7)	653 (20.7)	829 (20.1)
880	7,004 (20.2)	1,540 (17.5)	1,743 (13.9)	3,720 (27.9)	3,642 (21.2)	824 (7.7)	2,173 (45.0)	364 (17.7)		75 (100.0)	4,792 (19.8)	455 (14.1)	686 (21.7)	996 (24.1)
881	7,004 (20.2)	1,540 (17.5)	1,743 (13.9)	3,720 (27.9)	3,642 (21.2)	824 (7.7)	2,173 (45.0)	364 (17.7)			4,792 (19.8)	455 (14.1)	686 (21.7)	996 (24.1)
882	7,004 (20.2)	1,540 (17.5)	1,743 (13.9)	3,720 (27.9)	3,642 (21.2)	824 (7.7)	2,173 (45.0)	364 (17.7)			4,792 (19.8)	455 (14.1)	686 (21.7)	996 (24.1)
883	7,004 (20.2)	1,540 (17.5)	1,743 (13.9)	3,720 (27.9)	3,642 (21.2)	824 (7.7)	2,173 (45.0)	364 (17.7)			4,792 (19.8)	455 (14.1)	686 (21.7)	996 (24.1)
884	7,037 (20.3)	1,540 (17.5)	1,743 (13.9)	3,754 (28.1)	3,642 (21.2)	858 (8.0)	2,173 (45.0)	364 (17.7)			4,826 (20.0)	455 (14.1)	686 (21.7)	996 (24.1)
885	7,037 (20.3)	1,540 (17.5)	1,743 (13.9)	3,754 (28.1)	3,642 (21.2)	858 (8.0)	2,173 (45.0)	364 (17.7)			4,826 (20.0)	455 (14.1)	686 (21.7)	996 (24.1)
886	7,067 (20.3)	1,569 (17.8)	1,743 (13.9)	3,754 (28.1)	3,642 (21.2)	888 (8.3)	2,173 (45.0)	364 (17.7)			4,826 (20.0)	455 (14.1)	686 (21.7)	1,026 (24.8)
887	7,067 (20.3)	1,569 (17.8)	1,743 (13.9)	3,754 (28.1)	3,642 (21.2)	888 (8.3)	2,173 (45.0)	364 (17.7)			4,826 (20.0)	455 (14.1)	686 (21.7)	1,026 (24.8)
888	7,097 (20.4)	1,599 (18.1)	1,743 (13.9)	3,754 (28.1)	3,642 (21.2)	917 (8.6)	2,173 (45.0)	364 (17.7)			4,826 (20.0)	455 (14.1)	686 (21.7)	1,055 (25.5)
889	7,119 (20.5)	1,599 (18.1)	1,766 (14.0)	3,754 (28.1)	3,665 (21.4)	917 (8.6)	2,173 (45.0)	364 (17.7)			4,826 (20.0)	478 (14.8)	686 (21.7)	1,055 (25.5)
890	7,581 (21.8)	1,628 (18.5)	1,926 (15.3)	4,026 (30.2)	3,824 (22.3)	981 (9.2)	2,356 (48.8)	419 (20.3)			5,157 (21.4)	585 (18.1)	686 (21.7)	1,078 (26.1)
891	7,581 (21.8)	1,628 (18.5)	1,926 (15.3)	4,026 (30.2)	3,824 (22.3)	981 (9.2)	2,356 (48.8)	419 (20.3)			5,157 (21.4)	585 (18.1)	686 (21.7)	1,078 (26.1)
892	7,581 (21.8)	1,628 (18.5)	1,926 (15.3)	4,026 (30.2)	3,824 (22.3)	981 (9.2)	2,356 (48.8)	419 (20.3)			5,157 (21.4)	585 (18.1)	686 (21.7)	1,078 (26.1)
893	7,581 (21.8)	1,628 (18.5)	1,926 (15.3)	4,026 (30.2)	3,824 (22.3)	981 (9.2)	2,356 (48.8)	419 (20.3)			5,157 (21.4)	585 (18.1)	686 (21.7)	1,078 (26.1)
894	7,581 (21.8)	1,628 (18.5)	1,926 (15.3)	4,026 (30.2)	3,824 (22.3)	981 (9.2)	2,356 (48.8)	419 (20.3)			5,157 (21.4)	585 (18.1)	686 (21.7)	1,078 (26.1)
895	7,625 (21.9)	1,673 (19.0)	1,926 (15.3)	4,026 (30.2)	3,868 (22.5)	981 (9.2)	2,356 (48.8)	419 (20.3)			5,179 (21.5)	585 (18.1)	686 (21.7)	1,100 (26.6)
896	7,841 (22.6)	1,673 (19.0)	2,108 (16.8)	4,060 (30.4)	3,868 (22.5)	1,148 (10.7)	2,406 (49.8)	419 (20.3)			5,346 (22.1)	585 (18.1)	735 (23.3)	1,100 (26.6)
897	7,864 (22.6)	1,673 (19.0)	2,131 (16.9)	4,060 (30.4)	3,891 (22.7)	1,148 (10.7)	2,406 (49.8)	419 (20.3)			5,346 (22.1)	585 (18.1)	758 (24.0)	1,100 (26.6)
898	7,897 (22.7)	1,673 (19.0)	2,131 (16.9)	4,094 (30.7)	3,891 (22.7)	1,182 (11.1)	2,406 (49.8)	419 (20.3)			5,380 (22.3)	585 (18.1)	758 (24.0)	1,100 (26.6)
899	7,931 (22.8)	1,673 (19.0)	2,131 (16.9)	4,128 (30.9)	3,891 (22.7)	1,215 (11.4)	2,406 (49.8)	419 (20.3)			5,414 (22.4)	585 (18.1)	758 (24.0)	1,100 (26.6)
900	9,650 (27.8)	2,050 (23.2)	3,119 (24.8)	4,482 (33.6)	4,547 (26.5)	2,027 (19.0)	2,474 (51.2)	603 (29.3)			6,425 (26.6)	754 (23.3)	972 (30.8)	1,425 (34.5)
901	9,673 (27.8)	2,050 (23.2)	3,142 (25.0)	4,482 (33.6)	4,570 (26.6)	2,027 (19.0)	2,474 (51.2)	603 (29.3)			6,425 (26.6)	754 (23.3)	972 (30.8)	1,448 (35.0)
902	9,734 (28.0)	2,050 (23.2)	3,142 (25.0)	4,543 (34.0)	4,570 (26.6)	2,027 (19.0)	2,535 (52.5)	603 (29.3)			6,486 (26.9)	754 (23.3)	972 (30.8)	1,448 (35.0)

903	903	9,798 (28.2)	2,064 (23.4)	3,191 (25.4)	4,543 (34.0)	4,570 (26.6)	2,027 (19.0)	2,584 (53.5)	617 (30.0)			6,550 (27.1)	754 (23.3)	972 (30.8)	1,448 (35.0)	
904	904	9,798 (28.2)	2,064 (23.4)	3,191 (25.4)	4,543 (34.0)	4,570 (26.6)	2,027 (19.0)	2,584 (53.5)	617 (30.0)			6,550 (27.1)	754 (23.3)	972 (30.8)	1,448 (35.0)	
905	905	9,798 (28.2)	2,064 (23.4)	3,191 (25.4)	4,543 (34.0)	4,570 (26.6)	2,027 (19.0)	2,584 (53.5)	617 (30.0)			6,550 (27.1)	754 (23.3)	972 (30.8)	1,448 (35.0)	
906	906	9,854 (28.4)	2,086 (23.6)	3,191 (25.4)	4,577 (34.3)	4,592 (26.8)	2,060 (19.3)	2,584 (53.5)	617 (30.0)			6,605 (27.4)	754 (23.3)	972 (30.8)	1,448 (35.0)	
907	907	9,950 (28.6)	2,086 (23.6)	3,191 (25.4)	4,673 (35.0)	4,688 (27.3)	2,060 (19.3)	2,584 (53.5)	617 (30.0)			6,702 (27.8)	754 (23.3)	972 (30.8)	1,448 (35.0)	
908	908	9,950 (28.6)	2,086 (23.6)	3,191 (25.4)	4,673 (35.0)	4,688 (27.3)	2,060 (19.3)	2,584 (53.5)	617 (30.0)			6,702 (27.8)	754 (23.3)	972 (30.8)	1,448 (35.0)	
909	909	9,969 (28.7)	2,086 (23.6)	3,210 (25.5)	4,673 (35.0)	4,688 (27.3)	2,079 (19.5)	2,584 (53.5)	617 (30.0)			6,702 (27.8)	773 (23.9)	972 (30.8)	1,448 (35.0)	
910	910	10,177 (29.3)	2,217 (25.1)	3,254 (25.9)	4,707 (35.3)	4,733 (27.6)	2,113 (19.8)	2,693 (55.8)	638 (31.0)			6,846 (28.4)	773 (23.9)	1,036 (32.8)	1,448 (35.0)	
911	911	10,177 (29.3)	2,217 (25.1)	3,254 (25.9)	4,707 (35.3)	4,733 (27.6)	2,113 (19.8)	2,693 (55.8)	638 (31.0)			6,846 (28.4)	773 (23.9)	1,036 (32.8)	1,448 (35.0)	
912	919	10,387 (29.9)	2,217 (25.1)	3,345 (26.6)	4,825 (36.2)	4,872 (28.4)	2,147 (20.1)	2,693 (55.8)	674 (32.7)			7,010 (29.0)	796 (24.6)	1,059 (33.6)	1,448 (35.0)	
920	929	10,987 (31.6)	2,290 (26.0)	3,614 (28.7)	5,083 (38.1)	5,167 (30.1)	2,302 (21.5)	2,816 (58.3)	703 (34.1)			7,392 (30.6)	936 (28.9)	1,092 (34.6)	1,493 (36.1)	
930	939	11,460 (33.0)	2,382 (27.0)	3,865 (30.7)	5,213 (39.1)	5,536 (32.3)	2,365 (22.1)	2,856 (59.1)	703 (34.1)			7,774 (32.2)	936 (28.9)	1,092 (34.6)	1,584 (38.3)	
940	949	11,907 (34.3)	2,506 (28.4)	4,086 (32.5)	5,315 (39.8)	5,806 (33.8)	2,467 (23.1)	2,856 (59.1)	778 (37.8)			8,092 (33.5)	957 (29.6)	1,158 (36.7)	1,626 (39.3)	
950	959	12,627 (36.3)	2,680 (30.4)	4,352 (34.6)	5,595 (41.9)	6,153 (35.9)	2,749 (25.7)	2,947 (61.0)	778 (37.8)			8,491 (35.2)	1,068 (33.0)	1,267 (40.2)	1,727 (41.8)	
960	969	12,940 (37.2)	2,723 (30.9)	4,541 (36.1)	5,677 (42.5)	6,293 (36.7)	2,839 (26.6)	2,947 (61.0)	862 (41.9)			8,726 (36.1)	1,082 (33.4)	1,267 (40.2)	1,790 (43.3)	
970	979	13,262 (38.2)	2,758 (31.3)	4,602 (36.6)	5,902 (44.2)	6,385 (37.2)	2,945 (27.5)	2,960 (61.3)	971 (47.2)			8,937 (37.0)	1,123 (34.7)	1,303 (41.3)	1,824 (44.1)	
980	989	13,705 (39.4)	2,919 (33.1)	4,734 (37.6)	6,051 (45.3)	6,684 (38.9)	3,057 (28.6)	2,974 (61.6)	990 (48.1)			9,198 (38.1)	1,201 (37.1)	1,349 (42.8)	1,882 (45.5)	
990	999	13,965 (40.2)	3,004 (34.1)	4,848 (38.6)	6,112 (45.8)	6,773 (39.5)	3,076 (28.8)	3,126 (64.7)	990 (48.1)			9,412 (39.0)	1,247 (38.5)	1,349 (42.8)	1,882 (45.5)	
1000	1099	18,190 (52.4)	4,123 (46.7)	6,142 (48.8)	7,924 (59.4)	8,107 (47.2)	5,235 (49.0)	3,411 (70.6)	1,436 (69.8)			12,154 (50.3)	1,442 (44.5)	1,773 (56.2)	2,745 (66.4)	
1100	1199	20,834 (60.0)	4,989 (56.6)	7,049 (56.1)	8,796 (65.9)	9,635 (56.1)	6,058 (56.7)	3,671 (76.0)	1,469 (71.3)			14,191 (58.8)	1,538 (47.5)	1,920 (60.9)	3,110 (75.2)	
1200	1299	24,077 (69.3)	5,917 (67.1)	7,928 (63.0)	10,232 (76.7)	11,324 (66.0)	7,183 (67.2)	3,902 (80.8)	1,668 (81.0)			16,443 (68.1)	1,869 (57.7)	2,109 (66.9)	3,582 (86.7)	
1300	1399	25,907 (74.6)	6,313 (71.6)	8,782 (69.8)	10,812 (81.0)	12,240 (71.3)	8,068 (75.5)	3,916 (81.1)	1,682 (81.7)			17,750 (73.5)	2,044 (63.1)	2,280 (72.3)	3,758 (90.9)	
1400	1499	27,245 (78.4)	6,694 (75.9)	9,546 (75.9)	11,004 (82.5)	13,133 (76.5)	8,387 (78.5)	3,966 (82.1)	1,760 (85.5)			18,859 (78.1)	2,100 (64.9)	2,367 (75.0)	3,845 (93.0)	
1500		34,743 (100.0)	8,821 (100.0)	12,576 (100.0)	13,346 (100.0)	17,163 (100.0)	10,690 (100.0)	4,831 (100.0)	2,059 (100.0)			24,144 (100.0)	3,237 (100.0)	3,154 (100.0)	4,133 (100.0)	
月平均賃金額		195,200	188,135	204,356	191,241	196,138	203,404	180,635	178,958			148,404	201,158	222,364	191,796	142,568
時間当平均賃金額		1,234	1,241	1,299	1,167	1,259	1,257	1,129	1,148			843	1,235	1,393	1,256	1,090
月一人当たり労働時間数		155	147	153	162	152	158	161	156			176	157	156	146	126
第1・2 0分位数		865	861	865	870	870	880	847	863			835	865	870	865	862
第1・1 0分位数		870	870	870	870	870	896	861	870			835	870	870	865	865
第1・4 分位数		900	910	903	875	900	957	865	900			835	900	920	900	888
中位		1,069	1,121	1,102	1,022	1,120	1,101	900	1,000			835	1,090	1,260	1,000	1,000
四分位偏差係数		0.2370	0.2581	0.2575	0.2036	0.2507	0.1985	0.1796	0.1651			0.0005	0.2426	0.3051	0.2890	0.1528

【上段】

累積労働者数

【下段】

累積構成比

総括表(1) (産業・就業形態別の賃金額階級別、規模別、地域別、年齢別表)

04年 総括表(1) 産業：卸売業、小売業 就業形態：(全て) 産別適用除外含む全労働者

時間当り所定内賃金額 (3手当を除く)	合計	規模別			地域別				年齢別					
		1~9人	10~29人	30~99人	金沢	小松	七尾	穴水	17歳以下	18~19歳	20~54歳	55~59歳	60~64歳	65歳以上
計	56,420	27,144	29,276		39,137	9,204	5,195	2,884	242	588	41,055	5,472	4,429	4,635
円	561	446	115		147	105	237	72			287	20	42	212
-	850	(1.0)	(1.6)	(0.4)	(0.4)	(1.1)	(4.6)	(2.5)			(0.7)	(0.4)	(0.9)	(4.6)
851 -	851	(1.0)	(1.6)	(0.4)	(0.4)	(1.1)	(4.6)	(2.5)			(0.7)	(0.4)	(0.9)	(4.6)
	582	467	115		147	126	237	72			307	20	42	212
852 -	852	(1.0)	(1.7)	(0.4)	(0.4)	(1.4)	(4.6)	(2.5)			(0.7)	(0.4)	(0.9)	(4.6)
	582	467	115		147	126	237	72			307	20	42	212
853 -	853	(1.0)	(1.7)	(0.4)	(0.4)	(1.4)	(4.6)	(2.5)			(0.7)	(0.4)	(0.9)	(4.6)
	582	467	115		147	126	237	72			307	20	42	212
854 -	854	(1.0)	(1.7)	(0.4)	(0.4)	(1.4)	(4.6)	(2.5)			(0.7)	(0.4)	(0.9)	(4.6)
	582	467	115		147	126	237	72			307	20	42	212
855 -	855	(1.0)	(1.7)	(0.4)	(0.4)	(1.4)	(4.6)	(2.5)			(0.7)	(0.4)	(0.9)	(4.6)
	582	467	115		147	126	237	72			307	20	42	212
856 -	856	(1.0)	(1.7)	(0.4)	(0.4)	(1.4)	(4.6)	(2.5)			(0.7)	(0.4)	(0.9)	(4.6)
	582	467	115		147	126	237	72			307	20	42	212
857 -	857	(1.0)	(1.7)	(0.4)	(0.4)	(1.4)	(4.6)	(2.5)			(0.7)	(0.4)	(0.9)	(4.6)
	582	467	115		147	126	237	72			307	20	42	212
858 -	858	(1.0)	(1.7)	(0.4)	(0.4)	(1.4)	(4.6)	(2.5)			(0.7)	(0.4)	(0.9)	(4.6)
	582	467	115		147	126	237	72			307	20	42	212
859 -	859	(1.0)	(1.7)	(0.4)	(0.4)	(1.4)	(4.6)	(2.5)			(0.7)	(0.4)	(0.9)	(4.6)
	601	486	115		147	126	256	72			327	20	42	212
860 -	860	(1.1)	(1.8)	(0.4)	(0.4)	(1.4)	(4.9)	(2.5)			(0.8)	(0.4)	(0.9)	(4.6)
	2,123	1,449	674		540	503	394	687	24	24	1,155	185	180	554
861 -	861	(3.8)	(5.3)	(2.3)	(1.4)	(5.5)	(7.6)	(23.8)	(10.1)	(4.1)	(2.8)	(3.4)	(4.1)	(12.0)
	2,143	1,470	674		540	523	394	687	24	24	1,155	185	200	554
862 -	862	(3.8)	(5.4)	(2.3)	(1.4)	(5.7)	(7.6)	(23.8)	(10.1)	(4.1)	(2.8)	(3.4)	(4.5)	(12.0)
	2,164	1,490	674		540	543	394	687	24	24	1,155	185	200	575
863 -	863	(3.8)	(5.5)	(2.3)	(1.4)	(5.9)	(7.6)	(23.8)	(10.1)	(4.1)	(2.8)	(3.4)	(4.5)	(12.4)
	2,184	1,510	674		540	563	394	687	24	24	1,175	185	200	575
864 -	864	(3.9)	(5.6)	(2.3)	(1.4)	(6.1)	(7.6)	(23.8)	(10.1)	(4.1)	(2.9)	(3.4)	(4.5)	(12.4)
	3,276	1,613	1,663		1,081	770	696	728	125	24	2,058	210	200	659
865 -	865	(5.8)	(5.9)	(5.7)	(2.8)	(8.4)	(13.4)	(25.3)	(51.7)	(4.1)	(5.0)	(3.8)	(4.5)	(14.2)
	3,276	1,613	1,663		1,081	770	696	728	125	24	2,058	210	200	659
866 -	866	(5.8)	(5.9)	(5.7)	(2.8)	(8.4)	(13.4)	(25.3)	(51.7)	(4.1)	(5.0)	(3.8)	(4.5)	(14.2)
	3,276	1,613	1,663		1,081	770	696	728	125	24	2,058	210	200	659
867 -	867	(5.8)	(5.9)	(5.7)	(2.8)	(8.4)	(13.4)	(25.3)	(51.7)	(4.1)	(5.0)	(3.8)	(4.5)	(14.2)
	3,276	1,613	1,663		1,081	770	696	728	125	24	2,058	210	200	659
868 -	868	(5.8)	(5.9)	(5.7)	(2.8)	(8.4)	(13.4)	(25.3)	(51.7)	(4.1)	(5.0)	(3.8)	(4.5)	(14.2)
	3,276	1,613	1,663		1,081	770	696	728	125	24	2,058	210	200	659
869 -	869	(5.8)	(5.9)	(5.7)	(2.8)	(8.4)	(13.4)	(25.3)	(51.7)	(4.1)	(5.0)	(3.8)	(4.5)	(14.2)
	5,170	2,580	2,590		2,724	876	716	854	125	112	3,552	313	225	843
870 -	870	(9.2)	(9.5)	(8.8)	(7.0)	(9.5)	(13.8)	(29.6)	(51.7)	(19.0)	(8.7)	(5.7)	(5.1)	(18.2)
	5,170	2,580	2,590		2,724	876	716	854	125	112	3,552	313	225	843
871 -	871	(9.2)	(9.5)	(8.8)	(7.0)	(9.5)	(13.8)	(29.6)	(51.7)	(19.0)	(8.7)	(5.7)	(5.1)	(18.2)
	5,170	2,580	2,590		2,724	876	716	854	125	112	3,552	313	225	843
872 -	872	(9.2)	(9.5)	(8.8)	(7.0)	(9.5)	(13.8)	(29.6)	(51.7)	(19.0)	(8.7)	(5.7)	(5.1)	(18.2)
	5,170	2,580	2,590		2,724	876	716	854	125	112	3,552	313	225	843
873 -	873	(9.2)	(9.5)	(8.8)	(7.0)	(9.5)	(13.8)	(29.6)	(51.7)	(19.0)	(8.7)	(5.7)	(5.1)	(18.2)
	5,170	2,580	2,590		2,724	876	716	854	125	112	3,552	313	225	843
874 -	874	(9.2)	(9.5)	(8.8)	(7.0)	(9.5)	(13.8)	(29.6)	(51.7)	(19.0)	(8.7)	(5.7)	(5.1)	(18.2)

875 - 875	5,290 (9.4)	2,580 (9.5)	2,710 (9.3)		2,844 (7.3)	876 (9.5)	716 (13.8)	854 (29.6)	125 (51.7)	112 (19.0)	3,672 (8.9)	313 (5.7)	225 (5.1)	843 (18.2)
876 - 876	5,290 (9.4)	2,580 (9.5)	2,710 (9.3)		2,844 (7.3)	876 (9.5)	716 (13.8)	854 (29.6)	125 (51.7)	112 (19.0)	3,672 (8.9)	313 (5.7)	225 (5.1)	843 (18.2)
877 - 877	5,421 (9.6)	2,710 (10.0)	2,710 (9.3)		2,975 (7.6)	876 (9.5)	716 (13.8)	854 (29.6)	125 (51.7)	112 (19.0)	3,672 (8.9)	313 (5.7)	225 (5.1)	974 (21.0)
878 - 878	5,441 (9.6)	2,731 (10.1)	2,710 (9.3)		2,975 (7.6)	896 (9.7)	716 (13.8)	854 (29.6)	125 (51.7)	112 (19.0)	3,692 (9.0)	313 (5.7)	225 (5.1)	974 (21.0)
879 - 879	5,501 (9.8)	2,731 (10.1)	2,770 (9.5)		3,035 (7.8)	896 (9.7)	716 (13.8)	854 (29.6)	125 (51.7)	112 (19.0)	3,752 (9.1)	313 (5.7)	225 (5.1)	974 (21.0)
880	6,207 (11.0)	3,376 (12.4)	2,830 (9.7)		3,357 (8.6)	997 (10.8)	874 (16.8)	979 (33.9)	125 (51.7)	155 (26.4)	4,249 (10.3)	333 (6.1)	308 (6.9)	1,037 (22.4)
881	6,249 (11.1)	3,418 (12.6)	2,830 (9.7)		3,357 (8.6)	997 (10.8)	874 (16.8)	1,021 (35.4)	125 (51.7)	155 (26.4)	4,290 (10.5)	333 (6.1)	308 (6.9)	1,037 (22.4)
882	6,292 (11.2)	3,462 (12.8)	2,830 (9.7)		3,401 (8.7)	997 (10.8)	874 (16.8)	1,021 (35.4)	125 (51.7)	155 (26.4)	4,334 (10.6)	333 (6.1)	308 (6.9)	1,037 (22.4)
883	6,292 (11.2)	3,462 (12.8)	2,830 (9.7)		3,401 (8.7)	997 (10.8)	874 (16.8)	1,021 (35.4)	125 (51.7)	155 (26.4)	4,334 (10.6)	333 (6.1)	308 (6.9)	1,037 (22.4)
884	6,317 (11.2)	3,462 (12.8)	2,855 (9.8)		3,401 (8.7)	1,022 (11.1)	874 (16.8)	1,021 (35.4)	125 (51.7)	155 (26.4)	4,358 (10.6)	333 (6.1)	308 (6.9)	1,037 (22.4)
885	6,336 (11.2)	3,481 (12.8)	2,855 (9.8)		3,401 (8.7)	1,022 (11.1)	893 (17.2)	1,021 (35.4)	125 (51.7)	155 (26.4)	4,378 (10.7)	333 (6.1)	308 (6.9)	1,037 (22.4)
886	6,378 (11.3)	3,523 (13.0)	2,855 (9.8)		3,401 (8.7)	1,022 (11.1)	893 (17.2)	1,062 (36.8)	125 (51.7)	155 (26.4)	4,420 (10.8)	333 (6.1)	308 (6.9)	1,037 (22.4)
887	6,378 (11.3)	3,523 (13.0)	2,855 (9.8)		3,401 (8.7)	1,022 (11.1)	893 (17.2)	1,062 (36.8)	125 (51.7)	155 (26.4)	4,420 (10.8)	333 (6.1)	308 (6.9)	1,037 (22.4)
888	6,378 (11.3)	3,523 (13.0)	2,855 (9.8)		3,401 (8.7)	1,022 (11.1)	893 (17.2)	1,062 (36.8)	125 (51.7)	155 (26.4)	4,420 (10.8)	333 (6.1)	308 (6.9)	1,037 (22.4)
889	6,378 (11.3)	3,523 (13.0)	2,855 (9.8)		3,401 (8.7)	1,022 (11.1)	893 (17.2)	1,062 (36.8)	125 (51.7)	155 (26.4)	4,420 (10.8)	333 (6.1)	308 (6.9)	1,037 (22.4)
890	6,734 (11.9)	3,819 (14.1)	2,915 (10.0)		3,548 (9.1)	1,022 (11.1)	893 (17.2)	1,271 (44.1)	125 (51.7)	155 (26.4)	4,649 (11.3)	375 (6.8)	349 (7.9)	1,081 (23.3)
891	6,734 (11.9)	3,819 (14.1)	2,915 (10.0)		3,548 (9.1)	1,022 (11.1)	893 (17.2)	1,271 (44.1)	125 (51.7)	155 (26.4)	4,649 (11.3)	375 (6.8)	349 (7.9)	1,081 (23.3)
892	6,778 (12.0)	3,863 (14.2)	2,915 (10.0)		3,592 (9.2)	1,022 (11.1)	893 (17.2)	1,271 (44.1)	125 (51.7)	155 (26.4)	4,692 (11.4)	375 (6.8)	349 (7.9)	1,081 (23.3)
893	6,821 (12.1)	3,906 (14.4)	2,915 (10.0)		3,635 (9.3)	1,022 (11.1)	893 (17.2)	1,271 (44.1)	125 (51.7)	155 (26.4)	4,692 (11.4)	375 (6.8)	349 (7.9)	1,124 (24.3)
894	6,821 (12.1)	3,906 (14.4)	2,915 (10.0)		3,635 (9.3)	1,022 (11.1)	893 (17.2)	1,271 (44.1)	125 (51.7)	155 (26.4)	4,692 (11.4)	375 (6.8)	349 (7.9)	1,124 (24.3)
895	6,821 (12.1)	3,906 (14.4)	2,915 (10.0)		3,635 (9.3)	1,022 (11.1)	893 (17.2)	1,271 (44.1)	125 (51.7)	155 (26.4)	4,692 (11.4)	375 (6.8)	349 (7.9)	1,124 (24.3)
896	6,923 (12.3)	3,948 (14.5)	2,975 (10.2)		3,695 (9.4)	1,022 (11.1)	893 (17.2)	1,313 (45.5)	125 (51.7)	155 (26.4)	4,794 (11.7)	375 (6.8)	349 (7.9)	1,124 (24.3)
897	6,967 (12.3)	3,992 (14.7)	2,975 (10.2)		3,739 (9.6)	1,022 (11.1)	893 (17.2)	1,313 (45.5)	125 (51.7)	155 (26.4)	4,794 (11.7)	418 (7.6)	349 (7.9)	1,124 (24.3)
898	6,991 (12.4)	3,992 (14.7)	2,999 (10.2)		3,739 (9.6)	1,046 (11.4)	893 (17.2)	1,313 (45.5)	125 (51.7)	155 (26.4)	4,819 (11.7)	418 (7.6)	349 (7.9)	1,124 (24.3)
899	6,991 (12.4)	3,992 (14.7)	2,999 (10.2)		3,739 (9.6)	1,046 (11.4)	893 (17.2)	1,313 (45.5)	125 (51.7)	155 (26.4)	4,819 (11.7)	418 (7.6)	349 (7.9)	1,124 (24.3)
900	9,313 (16.5)	5,235 (19.3)	4,078 (13.9)		5,251 (13.4)	1,395 (15.2)	1,031 (19.9)	1,636 (56.7)	125 (51.7)	199 (33.8)	5,989 (14.6)	606 (11.1)	706 (15.9)	1,689 (36.4)
901	9,313 (16.5)	5,235 (19.3)	4,078 (13.9)		5,251 (13.4)	1,395 (15.2)	1,031 (19.9)	1,636 (56.7)	125 (51.7)	199 (33.8)	5,989 (14.6)	606 (11.1)	706 (15.9)	1,689 (36.4)
902	9,313 (16.5)	5,235 (19.3)	4,078 (13.9)		5,251 (13.4)	1,395 (15.2)	1,031 (19.9)	1,636 (56.7)	125 (51.7)	199 (33.8)	5,989 (14.6)	606 (11.1)	706 (15.9)	1,689 (36.4)

903	903	9,313 (16.5)	5,235 (19.3)	4,078 (13.9)		5,251 (13.4)	1,395 (15.2)	1,031 (19.9)	1,636 (56.7)	125 (51.7)	199 (33.8)	5,989 (14.6)	606 (11.1)	706 (15.9)	1,689 (36.4)
904	904	9,354 (16.6)	5,276 (19.4)	4,078 (13.9)		5,251 (13.4)	1,395 (15.2)	1,031 (19.9)	1,677 (58.2)	125 (51.7)	199 (33.8)	6,031 (14.7)	606 (11.1)	706 (15.9)	1,689 (36.4)
905	905	9,385 (16.6)	5,276 (19.4)	4,108 (14.0)		5,251 (13.4)	1,395 (15.2)	1,031 (19.9)	1,708 (59.2)	125 (51.7)	199 (33.8)	6,031 (14.7)	636 (11.6)	706 (15.9)	1,689 (36.4)
906	906	9,385 (16.6)	5,276 (19.4)	4,108 (14.0)		5,251 (13.4)	1,395 (15.2)	1,031 (19.9)	1,708 (59.2)	125 (51.7)	199 (33.8)	6,031 (14.7)	636 (11.6)	706 (15.9)	1,689 (36.4)
907	907	9,385 (16.6)	5,276 (19.4)	4,108 (14.0)		5,251 (13.4)	1,395 (15.2)	1,031 (19.9)	1,708 (59.2)	125 (51.7)	199 (33.8)	6,031 (14.7)	636 (11.6)	706 (15.9)	1,689 (36.4)
908	908	9,385 (16.6)	5,276 (19.4)	4,108 (14.0)		5,251 (13.4)	1,395 (15.2)	1,031 (19.9)	1,708 (59.2)	125 (51.7)	199 (33.8)	6,031 (14.7)	636 (11.6)	706 (15.9)	1,689 (36.4)
909	909	9,385 (16.6)	5,276 (19.4)	4,108 (14.0)		5,251 (13.4)	1,395 (15.2)	1,031 (19.9)	1,708 (59.2)	125 (51.7)	199 (33.8)	6,031 (14.7)	636 (11.6)	706 (15.9)	1,689 (36.4)
910	910	9,512 (16.9)	5,404 (19.9)	4,108 (14.0)		5,339 (13.6)	1,435 (15.6)	1,031 (19.9)	1,708 (59.2)	125 (51.7)	199 (33.8)	6,138 (15.0)	636 (11.6)	726 (16.4)	1,689 (36.4)
911	911	9,512 (16.9)	5,404 (19.9)	4,108 (14.0)		5,339 (13.6)	1,435 (15.6)	1,031 (19.9)	1,708 (59.2)	125 (51.7)	199 (33.8)	6,138 (15.0)	636 (11.6)	726 (16.4)	1,689 (36.4)
912	919	9,910 (17.6)	5,681 (20.9)	4,229 (14.4)		5,633 (14.4)	1,496 (16.3)	1,031 (19.9)	1,749 (60.7)	125 (51.7)	199 (33.8)	6,430 (15.7)	680 (12.4)	768 (17.3)	1,709 (36.9)
920	929	11,657 (20.7)	6,006 (22.1)	5,651 (19.3)		7,141 (18.2)	1,735 (18.9)	1,031 (19.9)	1,749 (60.7)	198 (82.0)	464 (78.9)	7,795 (19.0)	680 (12.4)	792 (17.9)	1,729 (37.3)
930	939	12,517 (22.2)	6,523 (24.0)	5,995 (20.5)		7,774 (19.9)	1,849 (20.1)	1,031 (19.9)	1,863 (64.6)	198 (82.0)	464 (78.9)	8,565 (20.9)	728 (13.3)	834 (18.8)	1,729 (37.3)
940	949	12,838 (22.8)	6,758 (24.9)	6,079 (20.8)		8,009 (20.5)	1,873 (20.4)	1,051 (20.2)	1,905 (66.1)	198 (82.0)	464 (78.9)	8,865 (21.6)	728 (13.3)	834 (18.8)	1,749 (37.7)
950	959	14,459 (25.6)	7,705 (28.4)	6,754 (23.1)		9,177 (23.4)	2,047 (22.2)	1,287 (24.8)	1,947 (67.5)	198 (82.0)	484 (82.3)	10,058 (24.5)	876 (16.0)	918 (20.7)	1,924 (41.5)
960	969	15,020 (26.6)	8,024 (29.6)	6,995 (23.9)		9,575 (24.5)	2,088 (22.7)	1,307 (25.2)	2,049 (71.1)	198 (82.0)	484 (82.3)	10,353 (25.2)	936 (17.1)	1,023 (23.1)	2,026 (43.7)
970	979	15,579 (27.6)	8,390 (30.9)	7,188 (24.6)		10,001 (25.6)	2,222 (24.1)	1,307 (25.2)	2,049 (71.1)	198 (82.0)	528 (89.8)	10,824 (26.4)	981 (17.9)	1,023 (23.1)	2,026 (43.7)
980	989	15,869 (28.1)	8,476 (31.2)	7,393 (25.3)		10,225 (26.1)	2,246 (24.4)	1,307 (25.2)	2,091 (72.5)	198 (82.0)	528 (89.8)	11,114 (27.1)	981 (17.9)	1,023 (23.1)	2,026 (43.7)
990	999	16,207 (28.7)	8,694 (32.0)	7,514 (25.7)		10,563 (27.0)	2,246 (24.4)	1,307 (25.2)	2,091 (72.5)	198 (82.0)	528 (89.8)	11,321 (27.6)	1,024 (18.7)	1,066 (24.1)	2,070 (44.7)
1000	1099	21,965 (38.9)	11,718 (43.2)	10,247 (35.0)		13,980 (35.7)	3,713 (40.3)	1,964 (37.8)	2,307 (80.0)	242 (100.0)	588 (100.0)	15,417 (37.6)	1,363 (24.9)	1,594 (36.0)	2,761 (59.6)
1100	1199	26,269 (46.6)	13,820 (50.9)	12,449 (42.5)		17,059 (43.6)	4,334 (47.1)	2,402 (46.2)	2,474 (85.8)			18,721 (45.6)	1,633 (29.8)	2,117 (47.8)	2,970 (64.1)
1200	1299	30,724 (54.5)	15,708 (57.9)	15,016 (51.3)		20,489 (52.4)	4,999 (54.3)	2,619 (50.4)	2,618 (90.8)			22,232 (54.2)	2,004 (36.6)	2,264 (51.1)	3,395 (73.2)
1300	1399	34,333 (60.9)	17,285 (63.7)	17,047 (58.2)		23,065 (58.9)	5,769 (62.7)	2,838 (54.6)	2,660 (92.2)			25,171 (61.3)	2,348 (42.9)	2,478 (56.0)	3,506 (75.7)
1400	1499	37,187 (65.9)	18,631 (68.6)	18,555 (63.4)		25,074 (64.1)	6,175 (67.1)	3,277 (63.1)	2,660 (92.2)			27,348 (66.6)	2,621 (47.9)	2,665 (60.2)	3,723 (80.3)
1500		56,420 (100.0)	27,144 (100.0)	29,276 (100.0)		39,137 (100.0)	9,204 (100.0)	5,195 (100.0)	2,884 (100.0)			41,055 (100.0)	5,472 (100.0)	4,429 (100.0)	4,635 (100.0)
月平均賃金額		212,574	210,555	214,446		219,461	206,713	211,973	138,900	43,878	67,286	217,510	264,124	216,948	131,032
時間当平均賃金額		1,406	1,375	1,436		1,437	1,422	1,362	1,028	906	922	1,401	1,651	1,482	1,176
月一人当たり労働時間数		145	147	143		146	139	150	132	48	72	149	157	143	110
第1・2 0分位数		865	861	865		870	861	861	861	861	870	865	870	870	861
第1・1 0分位数		880	878	896		900	880	865	861	861	870	880	900	900	861
第1・4分位数		950	950	985		975	1,000	966	865	865	880	965	1,107	1,000	900
中位		1,247	1,187	1,280		1,267	1,250	1,293	900	865	920	1,250	1,544	1,256	1,000
四分位偏差係数		0.3006	0.2883	0.3002		0.3077	0.2480	0.2759	0.0754	0.0322	0.0222	0.2770	0.3000	0.3512	0.2170

【上段】

累積労働者数

【下段】

累積構成比

総括表(1) (産業・就業形態別の賃金額階級別、規模別、地域別、年齢別表)

04年 総括表(1) 産業：宿泊業，飲食サービス業 就業形態：(全て) 産別適用除外含む全労働者

時間当り所定内賃金額 (3手当を除く)	合計	規模別			地域別				年齢別					
		1~9人	10~29人	30~99人	金沢	小松	七尾	穴水	17歳以下	18~19歳	20~54歳	55~59歳	60~64歳	65歳以上
計	26,864	12,784	14,080		19,390	4,516	2,187	771	178	3,247	16,805	1,622	1,709	3,302
円	27	27				27					27			
-	850	(0.1)	(0.2)			(0.6)					(0.2)			
851 -	851	(0.1)	(0.2)			(0.6)					(0.2)			
852 -	852	(0.1)	(0.2)			(0.6)					(0.2)			
853 -	853	(0.1)	(0.2)			(0.6)					(0.2)			
854 -	854	(0.1)	(0.2)			(0.6)					(0.2)			
855 -	855	(0.1)	(0.2)			(0.6)					(0.2)			
856 -	856	(0.1)	(0.2)			(0.6)					(0.2)			
857 -	857	(0.1)	(0.2)			(0.6)					(0.2)			
858 -	858	(0.1)	(0.2)			(0.6)					(0.2)			
859 -	859	(0.1)	(0.2)			(0.6)					(0.2)			
860 -	860	(0.2)	(0.4)			(1.2)					(0.2)			27 (0.8)
861 -	861	(1.1)	(1.7)	(0.5)		(0.3)	(5.2)				(0.3)	(1.7)	(4.7)	(3.9)
862 -	862	(1.1)	(1.7)	(0.5)		(0.3)	(5.2)				(0.3)	(1.7)	(4.7)	(3.9)
863 -	863	(1.1)	(1.7)	(0.5)		(0.3)	(5.2)				(0.3)	(1.7)	(4.7)	(3.9)
864 -	864	(1.1)	(1.7)	(0.5)		(0.3)	(5.2)				(0.3)	(1.7)	(4.7)	(3.9)
865 -	865	(2.4)	(4.0)	(1.0)		(1.1)	(6.9)				53 (1.6)	153 (4.5)	73 (12.5)	214 (5.0)
866 -	866	(2.4)	(4.0)	(1.0)		(1.1)	(6.9)				136 (1.6)	153 (4.5)	73 (12.5)	214 (5.0)
867 -	867	(2.4)	(4.0)	(1.0)		(1.1)	(6.9)				136 (1.6)	153 (4.5)	73 (12.5)	214 (5.0)
868 -	868	(2.4)	(4.0)	(1.0)		(1.1)	(6.9)				136 (1.6)	153 (4.5)	73 (12.5)	214 (5.0)
869 -	869	(2.4)	(4.0)	(1.0)		(1.1)	(6.9)				136 (1.6)	153 (4.5)	73 (12.5)	214 (5.0)
870 -	870	(3.7)	(6.4)	(1.3)		(2.4)	(7.7)				181 (23.5)	105 (3.2)	251 (6.7)	109 (12.5)
871 -	871	(3.7)	(6.4)	(1.3)		(2.4)	(7.7)				181 (23.5)	105 (3.2)	251 (6.7)	109 (12.5)
872 -	872	(3.7)	(6.4)	(1.3)		(2.4)	(7.7)				181 (23.5)	105 (3.2)	251 (6.7)	109 (12.5)
873 -	873	(3.8)	(6.6)	(1.3)		(2.4)	(8.3)				181 (23.5)	105 (3.2)	251 (6.7)	109 (14.1)
874 -	874	(3.8)	(6.6)	(1.3)		(2.4)	(8.3)				181 (23.5)	105 (3.2)	251 (6.7)	109 (14.1)

875 - 875	1,028 (3.8)	846 (6.6)	182 (1.3)		474 (2.4)	373 (8.3)		181 (23.5)		105 (3.2)	251 (1.5)	109 (6.7)	242 (14.1)	322 (9.7)
876 - 876	1,028 (3.8)	846 (6.6)	182 (1.3)		474 (2.4)	373 (8.3)		181 (23.5)		105 (3.2)	251 (1.5)	109 (6.7)	242 (14.1)	322 (9.7)
877 - 877	1,028 (3.8)	846 (6.6)	182 (1.3)		474 (2.4)	373 (8.3)		181 (23.5)		105 (3.2)	251 (1.5)	109 (6.7)	242 (14.1)	322 (9.7)
878 - 878	1,028 (3.8)	846 (6.6)	182 (1.3)		474 (2.4)	373 (8.3)		181 (23.5)		105 (3.2)	251 (1.5)	109 (6.7)	242 (14.1)	322 (9.7)
879 - 879	1,028 (3.8)	846 (6.6)	182 (1.3)		474 (2.4)	373 (8.3)		181 (23.5)		105 (3.2)	251 (1.5)	109 (6.7)	242 (14.1)	322 (9.7)
880	1,164 (4.3)	982 (7.7)	182 (1.3)		474 (2.4)	373 (8.3)		317 (41.2)		105 (3.2)	341 (2.0)	109 (6.7)	242 (14.1)	367 (11.1)
881	1,164 (4.3)	982 (7.7)	182 (1.3)		474 (2.4)	373 (8.3)		317 (41.2)		105 (3.2)	341 (2.0)	109 (6.7)	242 (14.1)	367 (11.1)
882	1,164 (4.3)	982 (7.7)	182 (1.3)		474 (2.4)	373 (8.3)		317 (41.2)		105 (3.2)	341 (2.0)	109 (6.7)	242 (14.1)	367 (11.1)
883	1,164 (4.3)	982 (7.7)	182 (1.3)		474 (2.4)	373 (8.3)		317 (41.2)		105 (3.2)	341 (2.0)	109 (6.7)	242 (14.1)	367 (11.1)
884	1,164 (4.3)	982 (7.7)	182 (1.3)		474 (2.4)	373 (8.3)		317 (41.2)		105 (3.2)	341 (2.0)	109 (6.7)	242 (14.1)	367 (11.1)
885	1,164 (4.3)	982 (7.7)	182 (1.3)		474 (2.4)	373 (8.3)		317 (41.2)		105 (3.2)	341 (2.0)	109 (6.7)	242 (14.1)	367 (11.1)
886	1,164 (4.3)	982 (7.7)	182 (1.3)		474 (2.4)	373 (8.3)		317 (41.2)		105 (3.2)	341 (2.0)	109 (6.7)	242 (14.1)	367 (11.1)
887	1,192 (4.4)	1,009 (7.9)	182 (1.3)		474 (2.4)	401 (8.9)		317 (41.2)		105 (3.2)	369 (2.2)	109 (6.7)	242 (14.1)	367 (11.1)
888	1,192 (4.4)	1,009 (7.9)	182 (1.3)		474 (2.4)	401 (8.9)		317 (41.2)		105 (3.2)	369 (2.2)	109 (6.7)	242 (14.1)	367 (11.1)
889	1,192 (4.4)	1,009 (7.9)	182 (1.3)		474 (2.4)	401 (8.9)		317 (41.2)		105 (3.2)	369 (2.2)	109 (6.7)	242 (14.1)	367 (11.1)
890	1,244 (4.6)	1,062 (8.3)	182 (1.3)		526 (2.7)	401 (8.9)		317 (41.2)		105 (3.2)	421 (2.5)	109 (6.7)	242 (14.1)	367 (11.1)
891	1,297 (4.8)	1,115 (8.7)	182 (1.3)		579 (3.0)	401 (8.9)		317 (41.2)		105 (3.2)	421 (2.5)	109 (6.7)	294 (17.2)	367 (11.1)
892	1,401 (5.2)	1,115 (8.7)	287 (2.0)		579 (3.0)	401 (8.9)	104 (4.8)	317 (41.2)		105 (3.2)	525 (3.1)	109 (6.7)	294 (17.2)	367 (11.1)
893	1,401 (5.2)	1,115 (8.7)	287 (2.0)		579 (3.0)	401 (8.9)	104 (4.8)	317 (41.2)		105 (3.2)	525 (3.1)	109 (6.7)	294 (17.2)	367 (11.1)
894	1,456 (5.4)	1,169 (9.1)	287 (2.0)		579 (3.0)	455 (10.1)	104 (4.8)	317 (41.2)		105 (3.2)	580 (3.5)	109 (6.7)	294 (17.2)	367 (11.1)
895	1,456 (5.4)	1,169 (9.1)	287 (2.0)		579 (3.0)	455 (10.1)	104 (4.8)	317 (41.2)		105 (3.2)	580 (3.5)	109 (6.7)	294 (17.2)	367 (11.1)
896	1,456 (5.4)	1,169 (9.1)	287 (2.0)		579 (3.0)	455 (10.1)	104 (4.8)	317 (41.2)		105 (3.2)	580 (3.5)	109 (6.7)	294 (17.2)	367 (11.1)
897	1,456 (5.4)	1,169 (9.1)	287 (2.0)		579 (3.0)	455 (10.1)	104 (4.8)	317 (41.2)		105 (3.2)	580 (3.5)	109 (6.7)	294 (17.2)	367 (11.1)
898	1,456 (5.4)	1,169 (9.1)	287 (2.0)		579 (3.0)	455 (10.1)	104 (4.8)	317 (41.2)		105 (3.2)	580 (3.5)	109 (6.7)	294 (17.2)	367 (11.1)
899	1,456 (5.4)	1,169 (9.1)	287 (2.0)		579 (3.0)	455 (10.1)	104 (4.8)	317 (41.2)		105 (3.2)	580 (3.5)	109 (6.7)	294 (17.2)	367 (11.1)
900	4,287 (16.0)	2,623 (20.5)	1,663 (11.8)		2,729 (14.1)	719 (15.9)	521 (23.8)	317 (41.2)	53 (29.5)	1,015 (31.3)	1,883 (11.2)	214 (13.2)	505 (29.5)	616 (18.7)
901	4,314 (16.1)	2,651 (20.7)	1,663 (11.8)		2,729 (14.1)	746 (16.5)	521 (23.8)	317 (41.2)	53 (29.5)	1,015 (31.3)	1,910 (11.4)	214 (13.2)	505 (29.5)	616 (18.7)
902	4,314 (16.1)	2,651 (20.7)	1,663 (11.8)		2,729 (14.1)	746 (16.5)	521 (23.8)	317 (41.2)	53 (29.5)	1,015 (31.3)	1,910 (11.4)	214 (13.2)	505 (29.5)	616 (18.7)

903	903	4,314 (16.1)	2,651 (20.7)	1,663 (11.8)		2,729 (14.1)	746 (16.5)	521 (23.8)	317 (41.2)	53 (29.5)	1,015 (31.3)	1,910 (11.4)	214 (13.2)	505 (29.5)	616 (18.7)
904	904	4,314 (16.1)	2,651 (20.7)	1,663 (11.8)		2,729 (14.1)	746 (16.5)	521 (23.8)	317 (41.2)	53 (29.5)	1,015 (31.3)	1,910 (11.4)	214 (13.2)	505 (29.5)	616 (18.7)
905	905	4,419 (16.5)	2,756 (21.6)	1,663 (11.8)		2,834 (14.6)	746 (16.5)	521 (23.8)	317 (41.2)	53 (29.5)	1,015 (31.3)	1,963 (11.7)	214 (13.2)	557 (32.6)	616 (18.7)
906	906	4,419 (16.5)	2,756 (21.6)	1,663 (11.8)		2,834 (14.6)	746 (16.5)	521 (23.8)	317 (41.2)	53 (29.5)	1,015 (31.3)	1,963 (11.7)	214 (13.2)	557 (32.6)	616 (18.7)
907	907	4,419 (16.5)	2,756 (21.6)	1,663 (11.8)		2,834 (14.6)	746 (16.5)	521 (23.8)	317 (41.2)	53 (29.5)	1,015 (31.3)	1,963 (11.7)	214 (13.2)	557 (32.6)	616 (18.7)
908	908	4,419 (16.5)	2,756 (21.6)	1,663 (11.8)		2,834 (14.6)	746 (16.5)	521 (23.8)	317 (41.2)	53 (29.5)	1,015 (31.3)	1,963 (11.7)	214 (13.2)	557 (32.6)	616 (18.7)
909	909	4,447 (16.6)	2,783 (21.8)	1,663 (11.8)		2,834 (14.6)	774 (17.1)	521 (23.8)	317 (41.2)	53 (29.5)	1,015 (31.3)	1,990 (11.8)	214 (13.2)	557 (32.6)	616 (18.7)
910	910	4,876 (18.2)	2,994 (23.4)	1,882 (13.4)		3,045 (15.7)	992 (22.0)	521 (23.8)	317 (41.2)	142 (79.5)	1,105 (34.0)	2,096 (12.5)	251 (15.5)	594 (34.7)	689 (20.9)
911	911	4,876 (18.2)	2,994 (23.4)	1,882 (13.4)		3,045 (15.7)	992 (22.0)	521 (23.8)	317 (41.2)	142 (79.5)	1,105 (34.0)	2,096 (12.5)	251 (15.5)	594 (34.7)	689 (20.9)
912	919	5,007 (18.6)	3,021 (23.6)	1,986 (14.1)		3,045 (15.7)	1,020 (22.6)	626 (28.6)	317 (41.2)	142 (79.5)	1,105 (34.0)	2,123 (12.6)	355 (21.9)	594 (34.7)	689 (20.9)
920	929	6,122 (22.8)	3,578 (28.0)	2,544 (18.1)		3,846 (19.8)	1,229 (27.2)	730 (33.4)	317 (41.2)	142 (79.5)	1,194 (36.8)	2,880 (17.1)	355 (21.9)	647 (37.8)	905 (27.4)
930	939	6,492 (24.2)	3,949 (30.9)	2,544 (18.1)		4,162 (21.5)	1,284 (28.4)	730 (33.4)	317 (41.2)	142 (79.5)	1,352 (41.6)	3,065 (18.2)	382 (23.6)	647 (37.8)	905 (27.4)
940	949	7,019 (26.1)	4,475 (35.0)	2,544 (18.1)		4,688 (24.2)	1,284 (28.4)	730 (33.4)	317 (41.2)	142 (79.5)	1,510 (46.5)	3,381 (20.1)	382 (23.6)	699 (40.9)	905 (27.4)
950	959	8,369 (31.2)	5,372 (42.0)	2,997 (21.3)		5,647 (29.1)	1,629 (36.1)	730 (33.4)	363 (47.1)	142 (79.5)	1,907 (58.7)	4,209 (25.0)	382 (23.6)	745 (43.6)	985 (29.8)
960	969	8,713 (32.4)	5,534 (43.3)	3,179 (22.6)		5,700 (29.4)	1,921 (42.5)	730 (33.4)	363 (47.1)	178 (100.0)	1,934 (59.6)	4,380 (26.1)	382 (23.6)	745 (43.6)	1,094 (33.1)
970	979	9,256 (34.5)	5,641 (44.1)	3,615 (25.7)		6,006 (31.0)	2,158 (47.8)	730 (33.4)	363 (47.1)		1,934 (59.6)	4,596 (27.4)	509 (31.4)	781 (45.7)	1,257 (38.1)
980	989	9,737 (36.2)	5,721 (44.8)	4,016 (28.5)		6,058 (31.2)	2,586 (57.3)	730 (33.4)	363 (47.1)		2,107 (64.9)	4,868 (29.0)	509 (31.4)	781 (45.7)	1,294 (39.2)
990	999	9,826 (36.6)	5,774 (45.2)	4,052 (28.8)		6,111 (31.5)	2,623 (58.1)	730 (33.4)	363 (47.1)		2,107 (64.9)	4,957 (29.5)	509 (31.4)	781 (45.7)	1,294 (39.2)
1000	1099	18,668 (69.5)	8,862 (69.3)	9,805 (69.6)		12,695 (65.5)	3,333 (73.8)	2,187 (100.0)	454 (58.8)		3,247 (100.0)	10,215 (60.8)	878 (54.1)	1,486 (86.9)	2,664 (80.7)
1100	1199	20,756 (77.3)	9,917 (77.6)	10,838 (77.0)		14,318 (73.8)	3,751 (83.1)		499 (64.7)			11,791 (70.2)	1,146 (70.6)	1,549 (90.6)	2,843 (86.1)
1200	1299	22,034 (82.0)	10,653 (83.3)	11,381 (80.8)		15,351 (79.2)	3,951 (87.5)		544 (70.6)			12,673 (75.4)	1,199 (73.9)	1,577 (92.2)	3,161 (95.7)
1300	1399	22,395 (83.4)	10,815 (84.6)	11,581 (82.3)		15,531 (80.1)	4,134 (91.5)		544 (70.6)			12,970 (77.2)	1,199 (73.9)	1,604 (93.8)	3,197 (96.8)
1400	1499	23,730 (88.3)	11,497 (89.9)	12,234 (86.9)		16,511 (85.2)	4,307 (95.4)		726 (94.1)			14,114 (84.0)	1,390 (85.7)	1,604 (93.8)	3,197 (96.8)
1500		26,864 (100.0)	12,784 (100.0)	14,080 (100.0)		19,390 (100.0)	4,516 (100.0)		771 (100.0)			16,805 (100.0)	1,622 (100.0)	1,709 (100.0)	3,302 (100.0)
月平均賃金額		117,734	113,711	121,387		129,625	99,148	43,276	138,777	40,993	46,470	138,534	142,508	100,668	82,767
時間当平均賃金額		1,177	1,151	1,200		1,212	1,140	969	1,107	917	950	1,266	1,167	1,047	1,033
月一人当たり労働時間数		92	94	91		97	88	45	118	45	49	102	114	90	77
第1・2 0分位数		892	870	900		900	861	900	865	900	900	900	870	865	870
第1・1 0分位数		900	900	900		900	894	900	865	900	900	900	900	865	880
第1・4 分位数		940	920	971		950	923	912	880	900	900	957	971	900	920
中位		1,000	1,000	1,001		1,003	980	1,000	1,022	910	950	1,020	1,070	1,000	1,000
四分位偏差係数		0.0990	0.1152	0.0831		0.1249	0.1059	0.0443	0.2624	0.0060	0.0528	0.1533	0.2081	0.0685	0.0465

【上段】

累積労働者数

【下段】

累積構成比

総括表(1) (産業・就業形態別の賃金額階級別、規模別、地域別、年齢別表)

04年 総括表(1) 産業：医療、福祉 就業形態：(全て) 産別適用除外含む全労働者

時間当り所定内賃金額 (3手当を除く)	合計	規模別			地域別				年齢別					
		1~9人	10~29人	30~99人	金沢	小松	七尾	穴水	17歳以下	18~19歳	20~54歳	55~59歳	60~64歳	65歳以上
計	21,694	8,241	13,453		14,390	3,706	2,400	1,198		144	13,319	2,591	2,422	3,217
円	238	135	104		174	38		26			182	12		45
-	850	(1.1)	(1.6)	(0.8)	(1.2)	(1.0)		(2.2)			(1.4)	(0.5)		(1.4)
851 -	851	(1.1)	(1.6)	(0.8)	(1.2)	(1.0)		(2.2)			(1.4)	(0.5)		(1.4)
	238	135	104		174	38		26			182	12		45
852 -	852	(1.1)	(1.6)	(0.8)	(1.2)	(1.0)		(2.2)			(1.4)	(0.5)		(1.4)
	238	135	104		174	38		26			182	12		45
853 -	853	(1.1)	(1.6)	(0.8)	(1.2)	(1.0)		(2.2)			(1.4)	(0.5)		(1.4)
	238	135	104		174	38		26			182	12		45
854 -	854	(1.1)	(1.6)	(0.8)	(1.2)	(1.0)		(2.2)			(1.4)	(0.5)		(1.4)
	238	135	104		174	38		26			182	12		45
855 -	855	(1.1)	(1.6)	(0.8)	(1.2)	(1.0)		(2.2)			(1.4)	(0.5)		(1.4)
	238	135	104		174	38		26			182	12		45
856 -	856	(1.1)	(1.6)	(0.8)	(1.2)	(1.0)		(2.2)			(1.4)	(0.5)		(1.4)
	238	135	104		174	38		26			182	12		45
857 -	857	(1.1)	(1.6)	(0.8)	(1.2)	(1.0)		(2.2)			(1.4)	(0.5)		(1.4)
	238	135	104		174	38		26			182	12		45
858 -	858	(1.1)	(1.6)	(0.8)	(1.2)	(1.0)		(2.2)			(1.4)	(0.5)		(1.4)
	238	135	104		174	38		26			182	12		45
859 -	859	(1.1)	(1.6)	(0.8)	(1.2)	(1.0)		(2.2)			(1.4)	(0.5)		(1.4)
	238	135	104		174	38		26			182	12		45
860 -	860	(1.1)	(1.6)	(0.8)	(1.2)	(1.0)		(2.2)			(1.4)	(0.5)		(1.4)
	253	135	118		174	53		26			182	26		45
861 -	861	(1.2)	(1.6)	(0.9)	(1.2)	(1.4)		(2.2)			(1.4)	(1.0)		(1.4)
	253	135	118		174	53		26			182	26		45
862 -	862	(1.2)	(1.6)	(0.9)	(1.2)	(1.4)		(2.2)			(1.4)	(1.0)		(1.4)
	253	135	118		174	53		26			182	26		45
863 -	863	(1.2)	(1.6)	(0.9)	(1.2)	(1.4)		(2.2)			(1.4)	(1.0)		(1.4)
	253	135	118		174	53		26			182	26		45
864 -	864	(1.2)	(1.6)	(0.9)	(1.2)	(1.4)		(2.2)			(1.4)	(1.0)		(1.4)
	277	159	118		174	76		26			194	38		45
865 -	865	(1.3)	(1.9)	(0.9)	(1.2)	(2.1)		(2.2)			(1.5)	(1.5)		(1.4)
	277	159	118		174	76		26			194	38		45
866 -	866	(1.3)	(1.9)	(0.9)	(1.2)	(2.1)		(2.2)			(1.5)	(1.5)		(1.4)
	277	159	118		174	76		26			194	38		45
867 -	867	(1.3)	(1.9)	(0.9)	(1.2)	(2.1)		(2.2)			(1.5)	(1.5)		(1.4)
	277	159	118		174	76		26			194	38		45
868 -	868	(1.3)	(1.9)	(0.9)	(1.2)	(2.1)		(2.2)			(1.5)	(1.5)		(1.4)
	277	159	118		174	76		26			194	38		45
869 -	869	(1.3)	(1.9)	(0.9)	(1.2)	(2.1)		(2.2)			(1.5)	(1.5)		(1.4)
	364	201	163		261	76		26			194	83		87
870 -	870	(1.7)	(2.4)	(1.2)	(1.8)	(2.1)		(2.2)			(1.5)	(3.2)		(2.7)
	364	201	163		261	76		26			194	83		87
871 -	871	(1.7)	(2.4)	(1.2)	(1.8)	(2.1)		(2.2)			(1.5)	(3.2)		(2.7)
	364	201	163		261	76		26			194	83		87
872 -	872	(1.7)	(2.4)	(1.2)	(1.8)	(2.1)		(2.2)			(1.5)	(3.2)		(2.7)
	364	201	163		261	76		26			194	83		87
873 -	873	(1.7)	(2.4)	(1.2)	(1.8)	(2.1)		(2.2)			(1.5)	(3.2)		(2.7)
	364	201	163		261	76		26			194	83		87
874 -	874	(1.7)	(2.4)	(1.2)	(1.8)	(2.1)		(2.2)			(1.5)	(3.2)		(2.7)

		364	201	163		261	76		26			194	83		87
875 -	875	(1.7)	(2.4)	(1.2)		(1.8)	(2.1)		(2.2)			(1.5)	(3.2)		(2.7)
		364	201	163		261	76		26			194	83		87
876 -	876	(1.7)	(2.4)	(1.2)		(1.8)	(2.1)		(2.2)			(1.5)	(3.2)		(2.7)
		364	201	163		261	76		26			194	83		87
877 -	877	(1.7)	(2.4)	(1.2)		(1.8)	(2.1)		(2.2)			(1.5)	(3.2)		(2.7)
		392	201	191		261	105		26			194	83		116
878 -	878	(1.8)	(2.4)	(1.4)		(1.8)	(2.8)		(2.2)			(1.5)	(3.2)		(3.6)
		407	201	206		261	120		26			194	83		130
879 -	879	(1.9)	(2.4)	(1.5)		(1.8)	(3.2)		(2.2)			(1.5)	(3.2)		(4.0)
		500	295	206		261	179	34	26			218	83		200
880	880	(2.3)	(3.6)	(1.5)		(1.8)	(4.8)	(1.4)	(2.2)			(1.6)	(3.2)		(6.2)
		500	295	206		261	179	34	26			218	83		200
881	881	(2.3)	(3.6)	(1.5)		(1.8)	(4.8)	(1.4)	(2.2)			(1.6)	(3.2)		(6.2)
		500	295	206		261	179	34	26			218	83		200
882	882	(2.3)	(3.6)	(1.5)		(1.8)	(4.8)	(1.4)	(2.2)			(1.6)	(3.2)		(6.2)
		500	295	206		261	179	34	26			218	83		200
883	883	(2.3)	(3.6)	(1.5)		(1.8)	(4.8)	(1.4)	(2.2)			(1.6)	(3.2)		(6.2)
		543	337	206		303	179	34	26			260	83		200
884	884	(2.5)	(4.1)	(1.5)		(2.1)	(4.8)	(1.4)	(2.2)			(2.0)	(3.2)		(6.2)
		543	337	206		303	179	34	26			260	83		200
885	885	(2.5)	(4.1)	(1.5)		(2.1)	(4.8)	(1.4)	(2.2)			(2.0)	(3.2)		(6.2)
		543	337	206		303	179	34	26			260	83		200
886	886	(2.5)	(4.1)	(1.5)		(2.1)	(4.8)	(1.4)	(2.2)			(2.0)	(3.2)		(6.2)
		543	337	206		303	179	34	26			260	83		200
887	887	(2.5)	(4.1)	(1.5)		(2.1)	(4.8)	(1.4)	(2.2)			(2.0)	(3.2)		(6.2)
		543	337	206		303	179	34	26			260	83		200
888	888	(2.5)	(4.1)	(1.5)		(2.1)	(4.8)	(1.4)	(2.2)			(2.0)	(3.2)		(6.2)
		543	337	206		303	179	34	26			260	83		200
889	889	(2.5)	(4.1)	(1.5)		(2.1)	(4.8)	(1.4)	(2.2)			(2.0)	(3.2)		(6.2)
		587	337	250		348	179	34	26		45	260	83		200
890	890	(2.7)	(4.1)	(1.9)		(2.4)	(4.8)	(1.4)	(2.2)		(31.0)	(2.0)	(3.2)		(6.2)
		587	337	250		348	179	34	26		45	260	83		200
891	891	(2.7)	(4.1)	(1.9)		(2.4)	(4.8)	(1.4)	(2.2)		(31.0)	(2.0)	(3.2)		(6.2)
		587	337	250		348	179	34	26		45	260	83		200
892	892	(2.7)	(4.1)	(1.9)		(2.4)	(4.8)	(1.4)	(2.2)		(31.0)	(2.0)	(3.2)		(6.2)
		587	337	250		348	179	34	26		45	260	83		200
893	893	(2.7)	(4.1)	(1.9)		(2.4)	(4.8)	(1.4)	(2.2)		(31.0)	(2.0)	(3.2)		(6.2)
		587	337	250		348	179	34	26		45	260	83		200
894	894	(2.7)	(4.1)	(1.9)		(2.4)	(4.8)	(1.4)	(2.2)		(31.0)	(2.0)	(3.2)		(6.2)
		599	349	250		348	191	34	26		45	260	95		200
895	895	(2.8)	(4.2)	(1.9)		(2.4)	(5.2)	(1.4)	(2.2)		(31.0)	(2.0)	(3.7)		(6.2)
		628	349	279		348	220	34	26		45	260	95		229
896	896	(2.9)	(4.2)	(2.1)		(2.4)	(5.9)	(1.4)	(2.2)		(31.0)	(2.0)	(3.7)		(7.1)
		673	349	324		393	220	34	26		45	305	95		229
897	897	(3.1)	(4.2)	(2.4)		(2.7)	(5.9)	(1.4)	(2.2)		(31.0)	(2.3)	(3.7)		(7.1)
		673	349	324		393	220	34	26		45	305	95		229
898	898	(3.1)	(4.2)	(2.4)		(2.7)	(5.9)	(1.4)	(2.2)		(31.0)	(2.3)	(3.7)		(7.1)
		673	349	324		393	220	34	26		45	305	95		229
899	899	(3.1)	(4.2)	(2.4)		(2.7)	(5.9)	(1.4)	(2.2)		(31.0)	(2.3)	(3.7)		(7.1)
		1,283	845	439		817	407	34	26		59	600	161	123	340
900	900	(5.9)	(10.2)	(3.3)		(5.7)	(11.0)	(1.4)	(2.2)		(41.0)	(4.5)	(6.2)	(5.1)	(10.6)
		1,283	845	439		817	407	34	26		59	600	161	123	340
901	901	(5.9)	(10.2)	(3.3)		(5.7)	(11.0)	(1.4)	(2.2)		(41.0)	(4.5)	(6.2)	(5.1)	(10.6)
		1,283	845	439		817	407	34	26		59	600	161	123	340
902	902	(5.9)	(10.2)	(3.3)		(5.7)	(11.0)	(1.4)	(2.2)		(41.0)	(4.5)	(6.2)	(5.1)	(10.6)

903	903	1,283 (5.9)	845 (10.2)	439 (3.3)		817 (5.7)	407 (11.0)	34 (1.4)	26 (2.2)		59 (41.0)	600 (4.5)	161 (6.2)	123 (5.1)	340 (10.6)
904	904	1,326 (6.1)	887 (10.8)	439 (3.3)		859 (6.0)	407 (11.0)	34 (1.4)	26 (2.2)		59 (41.0)	600 (4.5)	161 (6.2)	123 (5.1)	382 (11.9)
905	905	1,326 (6.1)	887 (10.8)	439 (3.3)		859 (6.0)	407 (11.0)	34 (1.4)	26 (2.2)		59 (41.0)	600 (4.5)	161 (6.2)	123 (5.1)	382 (11.9)
906	906	1,326 (6.1)	887 (10.8)	439 (3.3)		859 (6.0)	407 (11.0)	34 (1.4)	26 (2.2)		59 (41.0)	600 (4.5)	161 (6.2)	123 (5.1)	382 (11.9)
907	907	1,326 (6.1)	887 (10.8)	439 (3.3)		859 (6.0)	407 (11.0)	34 (1.4)	26 (2.2)		59 (41.0)	600 (4.5)	161 (6.2)	123 (5.1)	382 (11.9)
908	908	1,326 (6.1)	887 (10.8)	439 (3.3)		859 (6.0)	407 (11.0)	34 (1.4)	26 (2.2)		59 (41.0)	600 (4.5)	161 (6.2)	123 (5.1)	382 (11.9)
909	909	1,338 (6.2)	899 (10.9)	439 (3.3)		859 (6.0)	419 (11.3)	34 (1.4)	26 (2.2)		59 (41.0)	600 (4.5)	161 (6.2)	123 (5.1)	394 (12.2)
910	910	1,350 (6.2)	911 (11.1)	439 (3.3)		859 (6.0)	430 (11.6)	34 (1.4)	26 (2.2)		59 (41.0)	600 (4.5)	173 (6.7)	123 (5.1)	394 (12.2)
911	911	1,350 (6.2)	911 (11.1)	439 (3.3)		859 (6.0)	430 (11.6)	34 (1.4)	26 (2.2)		59 (41.0)	600 (4.5)	173 (6.7)	123 (5.1)	394 (12.2)
912	919	1,495 (6.9)	935 (11.3)	561 (4.2)		903 (6.3)	454 (12.3)	112 (4.6)	26 (2.2)		59 (41.0)	690 (5.2)	185 (7.1)	123 (5.1)	439 (13.6)
920	929	1,585 (7.3)	935 (11.3)	650 (4.8)		993 (6.9)	454 (12.3)	112 (4.6)	26 (2.2)		59 (41.0)	690 (5.2)	185 (7.1)	123 (5.1)	528 (16.4)
930	939	1,794 (8.3)	935 (11.3)	859 (6.4)		1,126 (7.8)	454 (12.3)	112 (4.6)	102 (8.5)		59 (41.0)	734 (5.5)	229 (8.9)	198 (8.2)	572 (17.8)
940	949	1,961 (9.0)	1,043 (12.7)	918 (6.8)		1,256 (8.7)	493 (13.3)	112 (4.6)	102 (8.5)		101 (70.5)	833 (6.3)	241 (9.3)	198 (8.2)	587 (18.2)
950	959	2,293 (10.6)	1,240 (15.0)	1,052 (7.8)		1,428 (9.9)	543 (14.6)	146 (6.1)	177 (14.8)		101 (70.5)	1,138 (8.5)	241 (9.3)	198 (8.2)	613 (19.1)
960	969	2,562 (11.8)	1,359 (16.5)	1,203 (8.9)		1,557 (10.8)	571 (15.4)	257 (10.7)	177 (14.8)		101 (70.5)	1,360 (10.2)	241 (9.3)	198 (8.2)	662 (20.6)
970	979	2,774 (12.8)	1,359 (16.5)	1,415 (10.5)		1,602 (11.1)	586 (15.8)	335 (13.9)	252 (21.1)		101 (70.5)	1,452 (10.9)	241 (9.3)	198 (8.2)	782 (24.3)
980	989	3,125 (14.4)	1,439 (17.5)	1,686 (12.5)		1,733 (12.0)	627 (16.9)	412 (17.2)	354 (29.5)		101 (70.5)	1,549 (11.6)	241 (9.3)	351 (14.5)	883 (27.4)
990	999	3,309 (15.3)	1,609 (19.5)	1,700 (12.6)		1,903 (13.2)	641 (17.3)	412 (17.2)	354 (29.5)		101 (70.5)	1,648 (12.4)	241 (9.3)	394 (16.3)	925 (28.7)
1000	1099	6,278 (28.9)	2,599 (31.5)	3,679 (27.3)		3,829 (26.6)	1,094 (29.5)	926 (38.6)	429 (35.8)		144 (100.0)	3,459 (26.0)	677 (26.1)	712 (29.4)	1,286 (40.0)
1100	1199	9,759 (45.0)	3,674 (44.6)	6,085 (45.2)		6,282 (43.7)	1,618 (43.7)	1,227 (51.1)	632 (52.8)			5,714 (42.9)	1,228 (47.4)	1,072 (44.2)	1,602 (49.8)
1200	1299	11,704 (53.9)	4,661 (56.6)	7,043 (52.4)		7,547 (52.4)	2,066 (55.7)	1,329 (55.4)	763 (63.7)			6,773 (50.8)	1,639 (63.3)	1,321 (54.5)	1,826 (56.8)
1300	1399	13,841 (63.8)	5,490 (66.6)	8,350 (62.1)		8,903 (61.9)	2,522 (68.1)	1,552 (64.6)	864 (72.2)			8,358 (62.7)	1,849 (71.4)	1,517 (62.6)	1,972 (61.3)
1400	1499	16,070 (74.1)	6,190 (75.1)	9,880 (73.4)		10,530 (73.2)	2,790 (75.3)	1,731 (72.1)	1,018 (85.0)			9,500 (71.3)	2,065 (79.7)	1,795 (74.1)	2,566 (79.7)
1500		21,694 (100.0)	8,241 (100.0)	13,453 (100.0)		14,390 (100.0)	3,706 (100.0)	2,400 (100.0)	1,198 (100.0)			13,319 (100.0)	2,591 (100.0)	2,422 (100.0)	3,217 (100.0)
月平均賃金額		186,449	170,351	196,310		181,659	182,830	224,003	179,943		23,305	203,790	175,483	187,320	130,125
時間当平均賃金額		1,362	1,371	1,356		1,382	1,315	1,384	1,222		942	1,391	1,276	1,384	1,310
月一人当たり労働時間数		136	125	142		131	136	159	143		26	148	132	133	96
第1・20分位数		900	900	930		900	895	950	932		890	912	900	900	880
第1・10分位数		953	900	979		964	900	962	958		890	969	1,000	986	900
第1・4分位数		1,055	1,036	1,073		1,082	1,050	1,028	986		890	1,087	1,091	1,050	980
中位数		1,250	1,250	1,250		1,267	1,248	1,176	1,165		945	1,225	1,210	1,225	1,212
四分位偏差係数		0.1820	0.1851	0.1886		0.1784	0.1728	0.2207	0.1932		0.0625	0.1776	0.1398	0.1975	0.1990

【上段】

累積労働者数

【下段】

累積構成比

総括表(1) (産業・就業形態別の賃金額階級別、規模別、地域別、年齢別表)

04年 総括表(1) 産業：サービス業 就業形態：(全て) 産別適用除外含む全労働者

時間当り所定内賃金額 (3手当を除く)	合計	規模別			地域別				年齢別					
		1~9人	10~29人	30~99人	金沢	小松	七尾	穴水	17歳以下	18~19歳	20~54歳	55~59歳	60~64歳	65歳以上
計	28,369	16,398	11,971		20,080	4,693	2,490	1,106		106	19,458	2,655	2,026	4,124
円	284	284			212	73					88	36	56	104
-	850	(1.0)	(1.7)		(1.1)	(1.6)					(0.5)	(1.4)	(2.8)	(2.5)
851 -	851	(1.0)	(1.7)		(1.1)	(1.6)					(0.5)	(1.4)	(2.8)	(2.5)
	284	284			212	73					88	36	56	104
852 -	852	(1.0)	(1.7)		(1.1)	(1.6)					(0.5)	(1.4)	(2.8)	(2.5)
	284	284			212	73					88	36	56	104
853 -	853	(1.0)	(1.7)		(1.1)	(1.6)					(0.5)	(1.4)	(2.8)	(2.5)
	284	284			212	73					88	36	56	104
854 -	854	(1.0)	(1.7)		(1.1)	(1.6)					(0.5)	(1.4)	(2.8)	(2.5)
	284	284			212	73					88	36	56	104
855 -	855	(1.0)	(1.7)		(1.1)	(1.6)					(0.5)	(1.4)	(2.8)	(2.5)
	321	321			212	73		36			88	73	56	104
856 -	856	(1.1)	(2.0)		(1.1)	(1.6)		(3.3)			(0.5)	(2.7)	(2.8)	(2.5)
	321	321			212	73		36			88	73	56	104
857 -	857	(1.1)	(2.0)		(1.1)	(1.6)		(3.3)			(0.5)	(2.7)	(2.8)	(2.5)
	321	321			212	73		36			88	73	56	104
858 -	858	(1.1)	(2.0)		(1.1)	(1.6)		(3.3)			(0.5)	(2.7)	(2.8)	(2.5)
	321	321			212	73		36			88	73	56	104
859 -	859	(1.1)	(2.0)		(1.1)	(1.6)		(3.3)			(0.5)	(2.7)	(2.8)	(2.5)
	321	321			212	73		36			88	73	56	104
860 -	860	(1.1)	(2.0)		(1.1)	(1.6)		(3.3)			(0.5)	(2.7)	(2.8)	(2.5)
	397	364	34		212	141		44			139	73	56	129
861 -	861	(1.4)	(2.2)	(0.3)	(1.1)	(3.0)		(4.0)			(0.7)	(2.7)	(2.8)	(3.1)
	397	364	34		212	141		44			139	73	56	129
862 -	862	(1.4)	(2.2)	(0.3)	(1.1)	(3.0)		(4.0)			(0.7)	(2.7)	(2.8)	(3.1)
	397	364	34		212	141		44			139	73	56	129
863 -	863	(1.4)	(2.2)	(0.3)	(1.1)	(3.0)		(4.0)			(0.7)	(2.7)	(2.8)	(3.1)
	525	491	34		212	269		44			176	73	129	147
864 -	864	(1.8)	(3.0)	(0.3)	(1.1)	(5.7)		(4.0)			(0.9)	(2.7)	(6.4)	(3.6)
	604	571	34		212	269	43	81		22	212	94	129	147
865 -	865	(2.1)	(3.5)	(0.3)	(1.1)	(5.7)	(1.7)	(7.3)		(20.4)	(1.1)	(3.6)	(6.4)	(3.6)
	604	571	34		212	269	43	81		22	212	94	129	147
866 -	866	(2.1)	(3.5)	(0.3)	(1.1)	(5.7)	(1.7)	(7.3)		(20.4)	(1.1)	(3.6)	(6.4)	(3.6)
	604	571	34		212	269	43	81		22	212	94	129	147
867 -	867	(2.1)	(3.5)	(0.3)	(1.1)	(5.7)	(1.7)	(7.3)		(20.4)	(1.1)	(3.6)	(6.4)	(3.6)
	604	571	34		212	269	43	81		22	212	94	129	147
868 -	868	(2.1)	(3.5)	(0.3)	(1.1)	(5.7)	(1.7)	(7.3)		(20.4)	(1.1)	(3.6)	(6.4)	(3.6)
	604	571	34		212	269	43	81		22	212	94	129	147
869 -	869	(2.1)	(3.5)	(0.3)	(1.1)	(5.7)	(1.7)	(7.3)		(20.4)	(1.1)	(3.6)	(6.4)	(3.6)
	612	571	42		212	269	43	89		22	220	94	129	147
870 -	870	(2.2)	(3.5)	(0.3)	(1.1)	(5.7)	(1.7)	(8.0)		(20.4)	(1.1)	(3.6)	(6.4)	(3.6)
	612	571	42		212	269	43	89		22	220	94	129	147
871 -	871	(2.2)	(3.5)	(0.3)	(1.1)	(5.7)	(1.7)	(8.0)		(20.4)	(1.1)	(3.6)	(6.4)	(3.6)
	612	571	42		212	269	43	89		22	220	94	129	147
872 -	872	(2.2)	(3.5)	(0.3)	(1.1)	(5.7)	(1.7)	(8.0)		(20.4)	(1.1)	(3.6)	(6.4)	(3.6)
	612	571	42		212	269	43	89		22	220	94	129	147
873 -	873	(2.2)	(3.5)	(0.3)	(1.1)	(5.7)	(1.7)	(8.0)		(20.4)	(1.1)	(3.6)	(6.4)	(3.6)
	612	571	42		212	269	43	89		22	220	94	129	147
874 -	874	(2.2)	(3.5)	(0.3)	(1.1)	(5.7)	(1.7)	(8.0)		(20.4)	(1.1)	(3.6)	(6.4)	(3.6)

875 - 875	1,006 (3.5)	965 (5.9)	42 (0.3)		606 (3.0)	269 (5.7)	43 (1.7)	89 (8.0)		22 (20.4)	220 (1.1)	94 (3.6)	129 (6.4)	541 (13.1)
876 - 876	1,006 (3.5)	965 (5.9)	42 (0.3)		606 (3.0)	269 (5.7)	43 (1.7)	89 (8.0)		22 (20.4)	220 (1.1)	94 (3.6)	129 (6.4)	541 (13.1)
877 - 877	1,024 (3.6)	983 (6.0)	42 (0.3)		606 (3.0)	287 (6.1)	43 (1.7)	89 (8.0)		22 (20.4)	220 (1.1)	94 (3.6)	147 (7.3)	541 (13.1)
878 - 878	1,024 (3.6)	983 (6.0)	42 (0.3)		606 (3.0)	287 (6.1)	43 (1.7)	89 (8.0)		22 (20.4)	220 (1.1)	94 (3.6)	147 (7.3)	541 (13.1)
879 - 879	1,024 (3.6)	983 (6.0)	42 (0.3)		606 (3.0)	287 (6.1)	43 (1.7)	89 (8.0)		22 (20.4)	220 (1.1)	94 (3.6)	147 (7.3)	541 (13.1)
880 - 880	1,382 (4.9)	1,186 (7.2)	196 (1.6)		657 (3.3)	373 (7.9)	263 (10.6)	89 (8.0)		22 (20.4)	504 (2.6)	146 (5.5)	169 (8.3)	541 (13.1)
881 - 881	1,382 (4.9)	1,186 (7.2)	196 (1.6)		657 (3.3)	373 (7.9)	263 (10.6)	89 (8.0)		22 (20.4)	504 (2.6)	146 (5.5)	169 (8.3)	541 (13.1)
882 - 882	1,382 (4.9)	1,186 (7.2)	196 (1.6)		657 (3.3)	373 (7.9)	263 (10.6)	89 (8.0)		22 (20.4)	504 (2.6)	146 (5.5)	169 (8.3)	541 (13.1)
883 - 883	1,382 (4.9)	1,186 (7.2)	196 (1.6)		657 (3.3)	373 (7.9)	263 (10.6)	89 (8.0)		22 (20.4)	504 (2.6)	146 (5.5)	169 (8.3)	541 (13.1)
884 - 884	1,382 (4.9)	1,186 (7.2)	196 (1.6)		657 (3.3)	373 (7.9)	263 (10.6)	89 (8.0)		22 (20.4)	504 (2.6)	146 (5.5)	169 (8.3)	541 (13.1)
885 - 885	1,400 (4.9)	1,203 (7.3)	196 (1.6)		657 (3.3)	391 (8.3)	263 (10.6)	89 (8.0)		22 (20.4)	522 (2.7)	146 (5.5)	169 (8.3)	541 (13.1)
886 - 886	1,400 (4.9)	1,203 (7.3)	196 (1.6)		657 (3.3)	391 (8.3)	263 (10.6)	89 (8.0)		22 (20.4)	522 (2.7)	146 (5.5)	169 (8.3)	541 (13.1)
887 - 887	1,400 (4.9)	1,203 (7.3)	196 (1.6)		657 (3.3)	391 (8.3)	263 (10.6)	89 (8.0)		22 (20.4)	522 (2.7)	146 (5.5)	169 (8.3)	541 (13.1)
888 - 888	1,400 (4.9)	1,203 (7.3)	196 (1.6)		657 (3.3)	391 (8.3)	263 (10.6)	89 (8.0)		22 (20.4)	522 (2.7)	146 (5.5)	169 (8.3)	541 (13.1)
889 - 889	1,400 (4.9)	1,203 (7.3)	196 (1.6)		657 (3.3)	391 (8.3)	263 (10.6)	89 (8.0)		22 (20.4)	522 (2.7)	146 (5.5)	169 (8.3)	541 (13.1)
890 - 890	1,421 (5.0)	1,225 (7.5)	196 (1.6)		657 (3.3)	391 (8.3)	285 (11.4)	89 (8.0)		22 (20.4)	544 (2.8)	146 (5.5)	169 (8.3)	541 (13.1)
891 - 891	1,525 (5.4)	1,329 (8.1)	196 (1.6)		761 (3.8)	391 (8.3)	285 (11.4)	89 (8.0)		22 (20.4)	647 (3.3)	146 (5.5)	169 (8.3)	541 (13.1)
892 - 892	1,568 (5.5)	1,372 (8.4)	196 (1.6)		761 (3.8)	434 (9.2)	285 (11.4)	89 (8.0)		22 (20.4)	690 (3.5)	146 (5.5)	169 (8.3)	541 (13.1)
893 - 893	1,568 (5.5)	1,372 (8.4)	196 (1.6)		761 (3.8)	434 (9.2)	285 (11.4)	89 (8.0)		22 (20.4)	690 (3.5)	146 (5.5)	169 (8.3)	541 (13.1)
894 - 894	1,568 (5.5)	1,372 (8.4)	196 (1.6)		761 (3.8)	434 (9.2)	285 (11.4)	89 (8.0)		22 (20.4)	690 (3.5)	146 (5.5)	169 (8.3)	541 (13.1)
895 - 895	1,568 (5.5)	1,372 (8.4)	196 (1.6)		761 (3.8)	434 (9.2)	285 (11.4)	89 (8.0)		22 (20.4)	690 (3.5)	146 (5.5)	169 (8.3)	541 (13.1)
896 - 896	1,568 (5.5)	1,372 (8.4)	196 (1.6)		761 (3.8)	434 (9.2)	285 (11.4)	89 (8.0)		22 (20.4)	690 (3.5)	146 (5.5)	169 (8.3)	541 (13.1)
897 - 897	1,568 (5.5)	1,372 (8.4)	196 (1.6)		761 (3.8)	434 (9.2)	285 (11.4)	89 (8.0)		22 (20.4)	690 (3.5)	146 (5.5)	169 (8.3)	541 (13.1)
898 - 898	1,611 (5.7)	1,415 (8.6)	196 (1.6)		761 (3.8)	477 (10.2)	285 (11.4)	89 (8.0)		22 (20.4)	733 (3.8)	146 (5.5)	169 (8.3)	541 (13.1)
899 - 899	1,611 (5.7)	1,415 (8.6)	196 (1.6)		761 (3.8)	477 (10.2)	285 (11.4)	89 (8.0)		22 (20.4)	733 (3.8)	146 (5.5)	169 (8.3)	541 (13.1)
900 - 900	2,713 (9.6)	1,872 (11.4)	841 (7.0)		1,743 (8.7)	477 (10.2)	332 (13.3)	161 (14.6)		22 (20.4)	1,276 (6.6)	198 (7.5)	169 (8.3)	1,049 (25.4)
901 - 901	2,713 (9.6)	1,872 (11.4)	841 (7.0)		1,743 (8.7)	477 (10.2)	332 (13.3)	161 (14.6)		22 (20.4)	1,276 (6.6)	198 (7.5)	169 (8.3)	1,049 (25.4)
902 - 902	2,713 (9.6)	1,872 (11.4)	841 (7.0)		1,743 (8.7)	477 (10.2)	332 (13.3)	161 (14.6)		22 (20.4)	1,276 (6.6)	198 (7.5)	169 (8.3)	1,049 (25.4)

903	903	2,769 (9.8)	1,928 (11.8)	841 (7.0)		1,799 (9.0)	477 (10.2)	332 (13.3)	161 (14.6)		22 (20.4)	1,332 (6.8)	198 (7.5)	169 (8.3)	1,049 (25.4)
904	904	2,812 (9.9)	1,971 (12.0)	841 (7.0)		1,799 (9.0)	520 (11.1)	332 (13.3)	161 (14.6)		22 (20.4)	1,375 (7.1)	198 (7.5)	169 (8.3)	1,049 (25.4)
905	905	2,830 (10.0)	1,989 (12.1)	841 (7.0)		1,799 (9.0)	538 (11.5)	332 (13.3)	161 (14.6)		22 (20.4)	1,393 (7.2)	198 (7.5)	169 (8.3)	1,049 (25.4)
906	906	2,830 (10.0)	1,989 (12.1)	841 (7.0)		1,799 (9.0)	538 (11.5)	332 (13.3)	161 (14.6)		22 (20.4)	1,393 (7.2)	198 (7.5)	169 (8.3)	1,049 (25.4)
907	907	2,830 (10.0)	1,989 (12.1)	841 (7.0)		1,799 (9.0)	538 (11.5)	332 (13.3)	161 (14.6)		22 (20.4)	1,393 (7.2)	198 (7.5)	169 (8.3)	1,049 (25.4)
908	908	2,830 (10.0)	1,989 (12.1)	841 (7.0)		1,799 (9.0)	538 (11.5)	332 (13.3)	161 (14.6)		22 (20.4)	1,393 (7.2)	198 (7.5)	169 (8.3)	1,049 (25.4)
909	909	2,947 (10.4)	2,106 (12.8)	841 (7.0)		1,855 (9.2)	599 (12.8)	332 (13.3)	161 (14.6)		22 (20.4)	1,454 (7.5)	198 (7.5)	169 (8.3)	1,105 (26.8)
910	910	3,012 (10.6)	2,171 (13.2)	841 (7.0)		1,855 (9.2)	642 (13.7)	354 (14.2)	161 (14.6)		22 (20.4)	1,519 (7.8)	198 (7.5)	169 (8.3)	1,105 (26.8)
911	911	3,034 (10.7)	2,192 (13.4)	841 (7.0)		1,855 (9.2)	642 (13.7)	375 (15.1)	161 (14.6)		22 (20.4)	1,541 (7.9)	198 (7.5)	169 (8.3)	1,105 (26.8)
912	919	3,070 (10.8)	2,228 (13.6)	841 (7.0)		1,855 (9.2)	678 (14.4)	375 (15.1)	161 (14.6)		22 (20.4)	1,576 (8.1)	198 (7.5)	169 (8.3)	1,105 (26.8)
920	929	3,619 (12.8)	2,533 (15.4)	1,086 (9.1)		2,347 (11.7)	714 (15.2)	397 (15.9)	161 (14.6)		22 (20.4)	1,960 (10.1)	198 (7.5)	169 (8.3)	1,271 (30.8)
930	939	4,075 (14.4)	2,909 (17.7)	1,166 (9.7)		2,565 (12.8)	861 (18.3)	488 (19.6)	161 (14.6)		22 (20.4)	2,299 (11.8)	241 (9.1)	242 (11.9)	1,271 (30.8)
940	949	4,316 (15.2)	3,124 (19.1)	1,192 (10.0)		2,679 (13.3)	879 (18.7)	597 (24.0)	161 (14.6)		22 (20.4)	2,412 (12.4)	259 (9.7)	294 (14.5)	1,330 (32.2)
950	959	5,017 (17.7)	3,666 (22.4)	1,351 (11.3)		2,982 (14.9)	1,012 (21.6)	623 (25.0)	400 (36.2)		22 (20.4)	2,954 (15.2)	259 (9.7)	319 (15.8)	1,463 (35.5)
960	969	5,441 (19.2)	3,862 (23.6)	1,579 (13.2)		3,117 (15.5)	1,301 (27.7)	623 (25.0)	400 (36.2)		22 (20.4)	3,266 (16.8)	354 (13.3)	319 (15.8)	1,481 (35.9)
970	979	5,589 (19.7)	3,915 (23.9)	1,673 (14.0)		3,242 (16.1)	1,301 (27.7)	644 (25.9)	400 (36.2)		22 (20.4)	3,413 (17.5)	354 (13.3)	319 (15.8)	1,481 (35.9)
980	989	5,886 (20.7)	4,118 (25.1)	1,767 (14.8)		3,501 (17.4)	1,319 (28.1)	666 (26.7)	400 (36.2)		22 (20.4)	3,654 (18.8)	354 (13.3)	375 (18.5)	1,481 (35.9)
990	999	6,068 (21.4)	4,292 (26.2)	1,776 (14.8)		3,656 (18.2)	1,337 (28.5)	666 (26.7)	408 (36.9)		22 (20.4)	3,836 (19.7)	354 (13.3)	375 (18.5)	1,481 (35.9)
1000	1099	11,264 (39.7)	6,928 (42.2)	4,337 (36.2)		7,001 (34.9)	2,416 (51.5)	1,385 (55.6)	463 (41.8)		106 (100.0)	7,486 (38.5)	643 (24.2)	717 (35.4)	2,312 (56.1)
1100	1199	13,593 (47.9)	8,427 (51.4)	5,166 (43.2)		8,874 (44.2)	2,719 (57.9)	1,483 (59.6)	516 (46.7)			9,319 (47.9)	867 (32.7)	805 (39.7)	2,496 (60.5)
1200	1299	15,886 (56.0)	9,814 (59.8)	6,072 (50.7)		10,769 (53.6)	2,980 (63.5)	1,577 (63.3)	560 (50.7)			10,663 (54.8)	1,148 (43.2)	1,027 (50.7)	2,942 (71.3)
1300	1399	18,027 (63.5)	11,239 (68.5)	6,788 (56.7)		12,227 (60.9)	3,233 (68.9)	1,963 (78.8)	604 (54.6)			12,249 (63.0)	1,221 (46.0)	1,152 (56.9)	3,299 (80.0)
1400	1499	19,527 (68.8)	12,011 (73.2)	7,516 (62.8)		13,266 (66.1)	3,478 (74.1)	2,082 (83.6)	701 (63.3)			13,205 (67.9)	1,370 (51.6)	1,413 (69.7)	3,433 (83.3)
1500		28,369 (100.0)	16,398 (100.0)	11,971 (100.0)		20,080 (100.0)	4,693 (100.0)	2,490 (100.0)	1,106 (100.0)			19,458 (100.0)	2,655 (100.0)	2,026 (100.0)	4,124 (100.0)
月平均賃金額		220,506	194,364	256,314		234,952	196,789	170,709	170,960		69,960	224,030	287,385	191,574	178,911
時間当平均賃金額		1,427	1,316	1,579		1,475	1,337	1,203	1,444		972	1,409	1,763	1,405	1,320
月一人当たり労働時間数		150	145	157		154	146	135	114		71	156	160	139	122
第1・2 0分位数		890	875	900		900	864	880	865		865	900	880	864	875
第1・1 0分位数		909	900	920		920	898	880	865		865	900	880	864	875
第1・4分位数		1,000	983	1,035		1,030	965	959	950		1,000	1,022	1,102	1,016	900
中位		1,223	1,174	1,280		1,250	1,087	1,050	1,285		1,000	1,210	1,446	1,292	1,050
四分位偏差係数		0.2502	0.2306	0.3264		0.2747	0.2617	0.1867	0.3091		0.0003	0.2493	0.3733	0.2305	0.2205

【上段】

累積労働者数

【下段】

累積構成比

最低賃金引上げ額・率と影響率の関係表

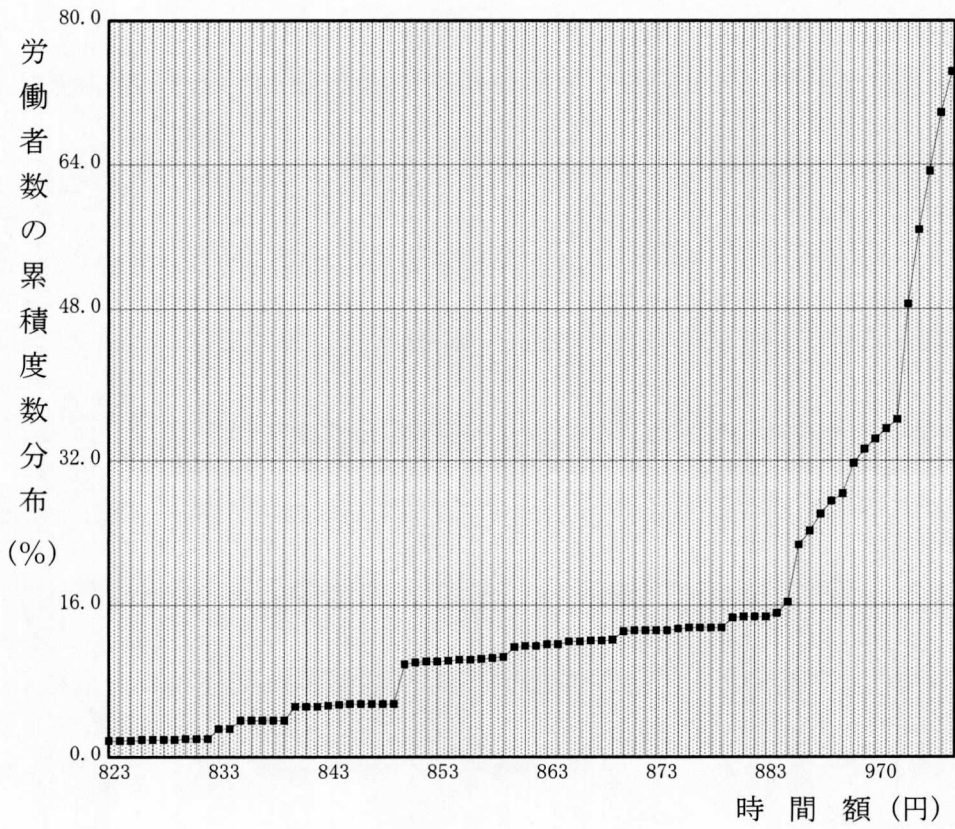
件名					
業種					
現行の最低賃金額	時間額			861円	
未満率	1.1%				
項番	時間額			影響率	未満労働者数
	引上げ額	引上げ率	引上げ後時間額		
1	0	0.00	861	1.09	1,833
2	1	0.12	862	2.62	4,403
3	2	0.23	863	2.66	4,478
4	3	0.35	864	2.70	4,541
5	4	0.46	865	2.81	4,722
6	5	0.58	866	4.26	7,176
7	6	0.70	867	4.26	7,176
8	7	0.81	868	4.26	7,176
9	8	0.93	869	4.26	7,176
10	9	1.05	870	4.28	7,210
11	10	1.16	871	7.28	12,261
12	11	1.28	872	7.29	12,280
13	12	1.39	873	7.32	12,329
14	13	1.51	874	7.52	12,662
15	14	1.63	875	7.72	12,990
16	15	1.74	876	8.22	13,836
17	16	1.86	877	8.22	13,836
18	17	1.97	878	8.31	13,985
19	18	2.09	879	8.35	14,056
20	19	2.21	880	8.39	14,130
21	20	2.32	881	9.66	16,257
22	21	2.44	882	9.68	16,299
23	22	2.56	883	9.71	16,343
24	23	2.67	884	9.71	16,343
25	24	2.79	885	9.77	16,443
26	25	2.90	886	9.79	16,481
27	26	3.02	887	9.83	16,552
28	27	3.14	888	9.85	16,579
29	28	3.25	889	9.87	16,609
30	29	3.37	890	9.88	16,632
31	30	3.48	891	10.44	17,568
32	31	3.60	892	10.53	17,724
33	32	3.72	893	10.64	17,915
34	33	3.83	894	10.67	17,959
35	34	3.95	895	10.70	18,013

最低賃金引上げ額・率と影響率の関係表

件名					
業種					
現行の最低賃金額	時間額			861円	
未満率	1.1%				
項番	時間額			影響率	未満労働者数
	引上げ額	引上げ率	引上げ後時間額		
36	35	4.07	896	10.73	18,069
37	36	4.18	897	10.94	18,416
38	37	4.30	898	11.01	18,527
39	38	4.41	899	11.07	18,628
40	39	4.53	900	11.09	18,662
41	40	4.65	901	16.19	27,246

B0-012-00 R 4.10.11 * 2ページ

時間額に対するその該当労働者数の累積度数分布



時間額に対するその該当労働者数の分布

