

最低賃金に関する基礎調査報告書
(令和3年6月実施)

石川労働局

業種別総括表及び最低賃金引上げ額・率と関係表

		ページ
No.1	地域別最低賃金適用産業総括表	1
No.2	地域別最低賃金適用産業製造業総括表	4
No.3	卸・小売業総括表	7
No.4	飲食店・旅館業総括表	10
No.5	医療・福祉業総括表	13
No.6	サービス業総括表	16
No.7	最低賃金引上げ額・率と影響率の関係表	19
No.8	時間額に対するその該当労働者数の分布(グラフ)	20
No.9	時間額に対するその該当労働者数の累積度数分布(グラフ)	21

総括表（１）（産業・就業形態別の賃金額階級別、規模別、地域別、年齢別表）

03年

総括表（１）

産業：地賃適用産業のみ

就業形態：（全て）

産別適用除外含む全労働者

時間当り所定内賃金額 （3手当を除く）	合計	規模別			地域別				年齢別					
		1～9人	10～29人	30～99人	加賀	能登			17歳以下	18～19歳	20～54歳	55～59歳	60～64歳	65歳以上
計	177,286	81,670	85,561	10,055	153,714	23,572			1,880	5,712	117,982	15,032	13,120	23,560
円	3,184	2,238	660	287	2,350	834			79	82	1,889	186	130	818
-	822	(1.8)	(2.7)	(0.8)	(2.9)	(1.5)	(3.5)		(4.2)	(1.4)	(1.6)	(1.2)	(1.0)	(3.5)
823 -	823	3,184	2,238	660	287	2,350	834		79	82	1,889	186	130	818
		(1.8)	(2.7)	(0.8)	(2.9)	(1.5)	(3.5)		(4.2)	(1.4)	(1.6)	(1.2)	(1.0)	(3.5)
824 -	824	3,218	2,272	660	287	2,384	834		79	82	1,923	186	130	818
		(1.8)	(2.8)	(0.8)	(2.9)	(1.6)	(3.5)		(4.2)	(1.4)	(1.6)	(1.2)	(1.0)	(3.5)
825 -	825	3,274	2,272	716	287	2,419	855		79	82	1,958	186	130	838
		(1.8)	(2.8)	(0.8)	(2.9)	(1.6)	(3.6)		(4.2)	(1.4)	(1.7)	(1.2)	(1.0)	(3.6)
826 -	826	3,325	2,272	742	311	2,443	882		79	82	2,009	186	130	838
		(1.9)	(2.8)	(0.9)	(3.1)	(1.6)	(3.7)		(4.2)	(1.4)	(1.7)	(1.2)	(1.0)	(3.6)
827 -	827	3,325	2,272	742	311	2,443	882		79	82	2,009	186	130	838
		(1.9)	(2.8)	(0.9)	(3.1)	(1.6)	(3.7)		(4.2)	(1.4)	(1.7)	(1.2)	(1.0)	(3.6)
828 -	828	3,362	2,308	742	311	2,443	918		79	82	2,046	186	130	838
		(1.9)	(2.8)	(0.9)	(3.1)	(1.6)	(3.9)		(4.2)	(1.4)	(1.7)	(1.2)	(1.0)	(3.6)
829 -	829	3,362	2,308	742	311	2,443	918		79	82	2,046	186	130	838
		(1.9)	(2.8)	(0.9)	(3.1)	(1.6)	(3.9)		(4.2)	(1.4)	(1.7)	(1.2)	(1.0)	(3.6)
830 -	830	3,482	2,429	742	311	2,564	918		79	82	2,046	186	130	959
		(2.0)	(3.0)	(0.9)	(3.1)	(1.7)	(3.9)		(4.2)	(1.4)	(1.7)	(1.2)	(1.0)	(4.1)
831 -	831	3,482	2,429	742	311	2,564	918		79	82	2,046	186	130	959
		(2.0)	(3.0)	(0.9)	(3.1)	(1.7)	(3.9)		(4.2)	(1.4)	(1.7)	(1.2)	(1.0)	(4.1)
832 -	832	3,596	2,520	766	311	2,584	1,012		79	82	2,136	186	153	959
		(2.0)	(3.1)	(0.9)	(3.1)	(1.7)	(4.3)		(4.2)	(1.4)	(1.8)	(1.2)	(1.2)	(4.1)
833 -	833	5,515	3,669	1,437	409	3,766	1,749		79	118	3,184	482	215	1,437
		(3.1)	(4.5)	(1.7)	(4.1)	(2.5)	(7.4)		(4.2)	(2.1)	(2.7)	(3.2)	(1.6)	(6.1)
834 -	834	5,515	3,669	1,437	409	3,766	1,749		79	118	3,184	482	215	1,437
		(3.1)	(4.5)	(1.7)	(4.1)	(2.5)	(7.4)		(4.2)	(2.1)	(2.7)	(3.2)	(1.6)	(6.1)
835 -	835	7,003	4,002	2,592	409	5,242	1,760		171	392	3,684	504	353	1,900
		(4.0)	(4.9)	(3.0)	(4.1)	(3.4)	(7.5)		(9.1)	(6.9)	(3.1)	(3.4)	(2.7)	(8.1)
836 -	836	7,003	4,002	2,592	409	5,242	1,760		171	392	3,684	504	353	1,900
		(4.0)	(4.9)	(3.0)	(4.1)	(3.4)	(7.5)		(9.1)	(6.9)	(3.1)	(3.4)	(2.7)	(8.1)
837 -	837	7,003	4,002	2,592	409	5,242	1,760		171	392	3,684	504	353	1,900
		(4.0)	(4.9)	(3.0)	(4.1)	(3.4)	(7.5)		(9.1)	(6.9)	(3.1)	(3.4)	(2.7)	(8.1)
838 -	838	7,038	4,002	2,627	409	5,278	1,760		171	392	3,684	504	353	1,935
		(4.0)	(4.9)	(3.1)	(4.1)	(3.4)	(7.5)		(9.1)	(6.9)	(3.1)	(3.4)	(2.7)	(8.2)
839 -	839	7,043	4,002	2,627	414	5,282	1,760		171	392	3,684	504	357	1,935
		(4.0)	(4.9)	(3.1)	(4.1)	(3.4)	(7.5)		(9.1)	(6.9)	(3.1)	(3.4)	(2.7)	(8.2)
840 -	840	9,696	5,399	3,859	438	7,209	2,487		377	542	4,642	565	663	2,907
		(5.5)	(6.6)	(4.5)	(4.4)	(4.7)	(10.6)		(20.1)	(9.5)	(3.9)	(3.8)	(5.0)	(12.3)
841 -	841	9,756	5,436	3,882	438	7,232	2,524		377	542	4,702	565	663	2,907
		(5.5)	(6.7)	(4.5)	(4.4)	(4.7)	(10.7)		(20.1)	(9.5)	(4.0)	(3.8)	(5.0)	(12.3)
842 -	842	9,837	5,478	3,921	438	7,274	2,562		377	542	4,729	565	663	2,961
		(5.5)	(6.7)	(4.6)	(4.4)	(4.7)	(10.9)		(20.1)	(9.5)	(4.0)	(3.8)	(5.0)	(12.6)
843 -	843	9,945	5,478	3,933	533	7,383	2,562		377	542	4,742	565	663	3,056
		(5.6)	(6.7)	(4.6)	(5.3)	(4.8)	(10.9)		(20.1)	(9.5)	(4.0)	(3.8)	(5.0)	(13.0)
844 -	844	10,157	5,478	4,039	640	7,524	2,632		377	542	4,918	565	663	3,092
		(5.7)	(6.7)	(4.7)	(6.4)	(4.9)	(11.2)		(20.1)	(9.5)	(4.2)	(3.8)	(5.0)	(13.1)
845 -	845	10,311	5,540	4,131	640	7,656	2,655		377	542	4,956	565	708	3,162
		(5.8)	(6.8)	(4.8)	(6.4)	(5.0)	(11.3)		(20.1)	(9.5)	(4.2)	(3.8)	(5.4)	(13.4)
846 -	846	10,311	5,540	4,131	640	7,656	2,655		377	542	4,956	565	708	3,162
		(5.8)	(6.8)	(4.8)	(6.4)	(5.0)	(11.3)		(20.1)	(9.5)	(4.2)	(3.8)	(5.4)	(13.4)
847 -	847	10,311	5,540	4,131	640	7,656	2,655		377	542	4,956	565	708	3,162
		(5.8)	(6.8)	(4.8)	(6.4)	(5.0)	(11.3)		(20.1)	(9.5)	(4.2)	(3.8)	(5.4)	(13.4)
848 -	848	10,334	5,540	4,155	640	7,679	2,655		377	542	4,980	565	708	3,162
		(5.8)	(6.8)	(4.9)	(6.4)	(5.0)	(11.3)		(20.1)	(9.5)	(4.2)	(3.8)	(5.4)	(13.4)

849	-	849	10,334 (5.8)	5,540 (6.8)	4,155 (4.9)	640 (6.4)	7,679 (5.0)	2,655 (11.3)			377 (20.1)	542 (9.5)	4,980 (4.2)	565 (3.8)	708 (5.4)	3,162 (13.4)
850	-	850	17,845 (10.1)	9,545 (11.7)	7,436 (8.7)	864 (8.6)	13,985 (9.1)	3,860 (16.4)			665 (35.4)	1,167 (20.4)	8,396 (7.1)	1,191 (7.9)	1,221 (9.3)	5,204 (22.1)
851	-	851	18,180 (10.3)	9,616 (11.8)	7,701 (9.0)	864 (8.6)	14,232 (9.3)	3,949 (16.8)			665 (35.4)	1,167 (20.4)	8,695 (7.4)	1,191 (7.9)	1,221 (9.3)	5,241 (22.2)
852		852	18,418 (10.4)	9,830 (12.0)	7,724 (9.0)	864 (8.6)	14,361 (9.3)	4,057 (17.2)			665 (35.4)	1,167 (20.4)	8,825 (7.5)	1,191 (7.9)	1,221 (9.3)	5,349 (22.7)
853		853	18,418 (10.4)	9,830 (12.0)	7,724 (9.0)	864 (8.6)	14,361 (9.3)	4,057 (17.2)			665 (35.4)	1,167 (20.4)	8,825 (7.5)	1,191 (7.9)	1,221 (9.3)	5,349 (22.7)
854		854	18,648 (10.5)	9,830 (12.0)	7,954 (9.3)	864 (8.6)	14,574 (9.5)	4,074 (17.3)			665 (35.4)	1,167 (20.4)	9,019 (7.6)	1,227 (8.2)	1,221 (9.3)	5,349 (22.7)
855		855	18,844 (10.6)	9,852 (12.1)	8,128 (9.5)	864 (8.6)	14,670 (9.5)	4,174 (17.7)			665 (35.4)	1,167 (20.4)	9,143 (7.7)	1,227 (8.2)	1,271 (9.7)	5,371 (22.8)
856		856	18,844 (10.6)	9,852 (12.1)	8,128 (9.5)	864 (8.6)	14,670 (9.5)	4,174 (17.7)			665 (35.4)	1,167 (20.4)	9,143 (7.7)	1,227 (8.2)	1,271 (9.7)	5,371 (22.8)
857		857	19,049 (10.7)	9,943 (12.2)	8,242 (9.6)	864 (8.6)	14,830 (9.6)	4,220 (17.9)			665 (35.4)	1,167 (20.4)	9,166 (7.8)	1,227 (8.2)	1,454 (11.1)	5,371 (22.8)
858		858	19,099 (10.8)	9,943 (12.2)	8,292 (9.7)	864 (8.6)	14,830 (9.6)	4,270 (18.1)			665 (35.4)	1,194 (20.9)	9,166 (7.8)	1,250 (8.3)	1,454 (11.1)	5,371 (22.8)
859		859	19,333 (10.9)	10,160 (12.4)	8,310 (9.7)	864 (8.6)	15,046 (9.8)	4,287 (18.2)			752 (40.0)	1,238 (21.7)	9,269 (7.9)	1,250 (8.3)	1,454 (11.1)	5,371 (22.8)
860		860	21,244 (12.0)	11,090 (13.6)	9,291 (10.9)	864 (8.6)	16,584 (10.8)	4,660 (19.8)			954 (50.7)	1,273 (22.3)	10,072 (8.5)	1,319 (8.8)	1,798 (13.7)	5,828 (24.7)
861		861	21,363 (12.1)	11,209 (13.7)	9,291 (10.9)	864 (8.6)	16,703 (10.9)	4,660 (19.8)			954 (50.7)	1,273 (22.3)	10,191 (8.6)	1,319 (8.8)	1,798 (13.7)	5,828 (24.7)
862		862	21,363 (12.1)	11,209 (13.7)	9,291 (10.9)	864 (8.6)	16,703 (10.9)	4,660 (19.8)			954 (50.7)	1,273 (22.3)	10,191 (8.6)	1,319 (8.8)	1,798 (13.7)	5,828 (24.7)
863		863	21,786 (12.3)	11,252 (13.8)	9,670 (11.3)	864 (8.6)	17,085 (11.1)	4,701 (19.9)			954 (50.7)	1,273 (22.3)	10,614 (9.0)	1,319 (8.8)	1,798 (13.7)	5,828 (24.7)
864		864	21,825 (12.3)	11,291 (13.8)	9,670 (11.3)	864 (8.6)	17,124 (11.1)	4,701 (19.9)			954 (50.7)	1,273 (22.3)	10,614 (9.0)	1,319 (8.8)	1,836 (14.0)	5,828 (24.7)
865		865	22,271 (12.6)	11,637 (14.2)	9,771 (11.4)	864 (8.6)	17,544 (11.4)	4,728 (20.1)			954 (50.7)	1,273 (22.3)	11,026 (9.3)	1,319 (8.8)	1,836 (14.0)	5,864 (24.9)
866		866	22,306 (12.6)	11,637 (14.2)	9,806 (11.5)	864 (8.6)	17,544 (11.4)	4,762 (20.2)			954 (50.7)	1,273 (22.3)	11,060 (9.4)	1,319 (8.8)	1,836 (14.0)	5,864 (24.9)
867		867	22,486 (12.7)	11,709 (14.3)	9,841 (11.5)	935 (9.3)	17,723 (11.5)	4,762 (20.2)			954 (50.7)	1,273 (22.3)	11,202 (9.5)	1,319 (8.8)	1,875 (14.3)	5,864 (24.9)
868		868	22,556 (12.7)	11,709 (14.3)	9,911 (11.6)	935 (9.3)	17,794 (11.6)	4,762 (20.2)			954 (50.7)	1,273 (22.3)	11,272 (9.6)	1,319 (8.8)	1,875 (14.3)	5,864 (24.9)
869		869	22,662 (12.8)	11,781 (14.4)	9,946 (11.6)	935 (9.3)	17,900 (11.6)	4,762 (20.2)			954 (50.7)	1,273 (22.3)	11,307 (9.6)	1,319 (8.8)	1,875 (14.3)	5,935 (25.2)
870		870	24,271 (13.7)	12,595 (15.4)	10,695 (12.5)	981 (9.8)	19,282 (12.5)	4,989 (21.2)			1,175 (62.5)	1,292 (22.6)	12,144 (10.3)	1,380 (9.2)	2,010 (15.3)	6,270 (26.6)
871		871	24,385 (13.8)	12,639 (15.5)	10,766 (12.6)	981 (9.8)	19,396 (12.6)	4,989 (21.2)			1,175 (62.5)	1,327 (23.2)	12,223 (10.4)	1,380 (9.2)	2,010 (15.3)	6,270 (26.6)
872		872	24,490 (13.8)	12,708 (15.6)	10,802 (12.6)	981 (9.8)	19,501 (12.7)	4,989 (21.2)			1,175 (62.5)	1,327 (23.2)	12,293 (10.4)	1,415 (9.4)	2,010 (15.3)	6,270 (26.6)
873		873	24,500 (13.8)	12,708 (15.6)	10,812 (12.6)	981 (9.8)	19,501 (12.7)	4,999 (21.2)			1,175 (62.5)	1,327 (23.2)	12,293 (10.4)	1,415 (9.4)	2,020 (15.4)	6,270 (26.6)
874		874	24,518 (13.8)	12,708 (15.6)	10,829 (12.7)	981 (9.8)	19,501 (12.7)	5,016 (21.3)			1,175 (62.5)	1,327 (23.2)	12,310 (10.4)	1,415 (9.4)	2,020 (15.4)	6,270 (26.6)
875		875	24,858 (14.0)	12,928 (15.8)	10,950 (12.8)	981 (9.8)	19,778 (12.9)	5,081 (21.6)			1,175 (62.5)	1,327 (23.2)	12,561 (10.6)	1,439 (9.6)	2,020 (15.4)	6,336 (26.9)
876		876	24,932 (14.1)	12,966 (15.9)	10,985 (12.8)	981 (9.8)	19,851 (12.9)	5,081 (21.6)			1,175 (62.5)	1,327 (23.2)	12,634 (10.7)	1,439 (9.6)	2,020 (15.4)	6,336 (26.9)
877		877	25,014 (14.1)	12,966 (15.9)	11,020 (12.9)	1,028 (10.2)	19,899 (12.9)	5,116 (21.7)			1,175 (62.5)	1,327 (23.2)	12,717 (10.8)	1,439 (9.6)	2,020 (15.4)	6,336 (26.9)
878		878	25,014 (14.1)	12,966 (15.9)	11,020 (12.9)	1,028 (10.2)	19,899 (12.9)	5,116 (21.7)			1,175 (62.5)	1,327 (23.2)	12,717 (10.8)	1,439 (9.6)	2,020 (15.4)	6,336 (26.9)

879	879	25,085 (14.1)	13,002 (15.9)	11,054 (12.9)	1,028 (10.2)	19,969 (13.0)	5,116 (21.7)			1,175 (62.5)	1,327 (23.2)	12,753 (10.8)	1,439 (9.6)	2,020 (15.4)	6,371 (27.0)
880	880	26,971 (15.2)	13,689 (16.8)	12,254 (14.3)	1,028 (10.2)	21,441 (13.9)	5,530 (23.5)			1,213 (64.5)	1,371 (24.0)	13,542 (11.5)	1,659 (11.0)	2,156 (16.4)	7,030 (29.8)
881	881	27,079 (15.3)	13,797 (16.9)	12,254 (14.3)	1,028 (10.2)	21,549 (14.0)	5,530 (23.5)			1,213 (64.5)	1,402 (24.5)	13,619 (11.5)	1,659 (11.0)	2,156 (16.4)	7,030 (29.8)
882	882	27,127 (15.3)	13,797 (16.9)	12,254 (14.3)	1,076 (10.7)	21,597 (14.1)	5,530 (23.5)			1,213 (64.5)	1,402 (24.5)	13,667 (11.6)	1,659 (11.0)	2,156 (16.4)	7,030 (29.8)
883	883	27,201 (15.3)	13,797 (16.9)	12,328 (14.4)	1,076 (10.7)	21,597 (14.1)	5,604 (23.8)			1,213 (64.5)	1,402 (24.5)	13,722 (11.6)	1,659 (11.0)	2,156 (16.4)	7,049 (29.9)
884	889	27,811 (15.7)	13,974 (17.1)	12,761 (14.9)	1,076 (10.7)	22,007 (14.3)	5,804 (24.6)			1,213 (64.5)	1,402 (24.5)	14,265 (12.1)	1,682 (11.2)	2,200 (16.8)	7,049 (29.9)
890	899	29,988 (16.9)	14,936 (18.3)	13,952 (16.3)	1,100 (10.9)	23,898 (15.5)	6,090 (25.8)			1,213 (64.5)	1,402 (24.5)	15,538 (13.2)	1,998 (13.3)	2,475 (18.9)	7,361 (31.2)
900	909	41,109 (23.2)	19,048 (23.3)	20,461 (23.9)	1,600 (15.9)	34,554 (22.5)	6,555 (27.8)			1,487 (79.1)	3,174 (55.6)	21,331 (18.1)	2,517 (16.7)	3,294 (25.1)	9,306 (39.5)
910	919	43,713 (24.7)	20,237 (24.8)	21,735 (25.4)	1,741 (17.3)	36,538 (23.8)	7,175 (30.4)			1,487 (79.1)	3,174 (55.6)	22,980 (19.5)	2,578 (17.2)	3,415 (26.0)	10,079 (42.8)
920	929	46,981 (26.5)	22,186 (27.2)	23,033 (26.9)	1,762 (17.5)	39,464 (25.7)	7,517 (31.9)			1,487 (79.1)	3,174 (55.6)	25,186 (21.3)	2,706 (18.0)	3,855 (29.4)	10,574 (44.9)
930	939	49,398 (27.9)	23,455 (28.7)	24,181 (28.3)	1,762 (17.5)	41,495 (27.0)	7,903 (33.5)			1,575 (83.8)	3,174 (55.6)	26,522 (22.5)	2,838 (18.9)	3,967 (30.2)	11,322 (48.1)
940	949	50,889 (28.7)	23,968 (29.3)	25,042 (29.3)	1,879 (18.7)	42,580 (27.7)	8,309 (35.2)			1,575 (83.8)	3,213 (56.2)	27,531 (23.3)	3,049 (20.3)	4,030 (30.7)	11,492 (48.8)
950	959	56,748 (32.0)	27,071 (33.1)	27,421 (32.0)	2,255 (22.4)	48,058 (31.3)	8,690 (36.9)			1,619 (86.1)	3,594 (62.9)	31,265 (26.5)	3,395 (22.6)	4,281 (32.6)	12,594 (53.5)
960	969	59,395 (33.5)	28,530 (34.9)	28,520 (33.3)	2,345 (23.3)	50,375 (32.8)	9,020 (38.3)			1,880 (100.0)	3,831 (67.1)	32,647 (27.7)	3,615 (24.0)	4,463 (34.0)	12,959 (55.0)
970	979	61,416 (34.6)	29,435 (36.0)	29,396 (34.4)	2,585 (25.7)	52,114 (33.9)	9,302 (39.5)				4,075 (71.3)	34,050 (28.9)	3,663 (24.4)	4,634 (35.3)	13,113 (55.7)
980	989	63,350 (35.7)	30,131 (36.9)	30,443 (35.6)	2,776 (27.6)	53,830 (35.0)	9,520 (40.4)				4,159 (72.8)	35,370 (30.0)	3,742 (24.9)	4,729 (36.0)	13,470 (57.2)
990	999	64,996 (36.7)	30,709 (37.6)	31,425 (36.7)	2,862 (28.5)	55,187 (35.9)	9,809 (41.6)				4,213 (73.8)	36,760 (31.2)	3,868 (25.7)	4,729 (36.0)	13,547 (57.5)
1000	1099	87,351 (49.3)	42,216 (51.7)	40,827 (47.7)	4,309 (42.8)	74,476 (48.5)	12,875 (54.6)				5,111 (89.5)	51,604 (43.7)	5,172 (34.4)	7,002 (53.4)	16,583 (70.4)
1100	1199	101,591 (57.3)	49,492 (60.6)	47,005 (54.9)	5,095 (50.7)	86,453 (56.2)	15,138 (64.2)				5,257 (92.0)	62,178 (52.7)	6,109 (40.6)	8,034 (61.2)	18,133 (77.0)
1200	1299	113,139 (63.8)	54,660 (66.9)	52,658 (61.5)	5,821 (57.9)	96,481 (62.8)	16,657 (70.7)				5,668 (99.2)	70,710 (59.9)	6,881 (45.8)	8,641 (65.9)	19,358 (82.2)
1300	1399	124,513 (70.2)	58,931 (72.2)	59,107 (69.1)	6,476 (64.4)	106,445 (69.2)	18,069 (76.7)				5,668 (99.2)	79,234 (67.2)	8,259 (54.9)	9,328 (71.1)	20,143 (85.5)
1400	1499	132,309 (74.6)	62,424 (76.4)	62,886 (73.5)	7,000 (69.6)	113,199 (73.6)	19,110 (81.1)				5,668 (99.2)	85,375 (72.4)	8,944 (59.5)	9,682 (73.8)	20,761 (88.1)
1500		177,286 (100.0)	81,670 (100.0)	85,561 (100.0)	10,055 (100.0)	153,714 (100.0)	23,572 (100.0)				5,712 (100.0)	117,982 (100.0)	15,032 (100.0)	13,120 (100.0)	23,560 (100.0)
月平均賃金額		184,356	177,540	187,368	214,098	186,073	173,162			39,243	75,175	199,353	231,982	182,465	117,976
時間当平均賃金額		1,303	1,287	1,310	1,366	1,314	1,230			874	1,170	1,336	1,491	1,281	1,093
月一人当たり労働時間数		136	134	135	153	135	138			45	69	144	151	136	106
第1・20分位数		840	840	850	843	850	833			835	835	850	850	840	833
第1・10分位数		850	850	860	877	860	840			840	850	870	880	857	840
第1・4分位数		920	920	915	974	922	893			850	900	950	990	909	869
中位数		1,102	1,079	1,125	1,191	1,111	1,050			860	900	1,161	1,346	1,070	950
四分位偏差係数		0.2634	0.2527	0.2660	0.2643	0.2673	0.2248			0.0295	0.0556	0.2576	0.2949	0.2804	0.1428

【上段】

累積労働者数

【下段】

累積構成比

総括表（１）（産業・就業形態別の賃金額階級別、規模別、地域別、年齢別表）

03年

総括表（１）

産業：製造業（特賃適用産業除く） 就業形態：（全て）

産別適用除外含む全労働者

時間当り所定内賃金額 （3手当を除く）	合計	規模別			地域別				年齢別					
		1～9人	10～29人	30～99人	加賀	能登			17歳以下	18～19歳	20～54歳	55～59歳	60～64歳	65歳以上
計	29,149	8,492	10,697	9,960	25,018	4,131			13	532	20,745	2,353	1,884	3,624
円	795	270	238	287	795						647	48		101
-	822	(2.7)	(3.2)	(2.2)	(2.9)	(3.2)					(3.1)	(2.0)		(2.8)
823 -	823	795	270	238	287	795					647	48		101
		(2.7)	(3.2)	(2.2)	(2.9)	(3.2)					(3.1)	(2.0)		(2.8)
824 -	824	795	270	238	287	795					647	48		101
		(2.7)	(3.2)	(2.2)	(2.9)	(3.2)					(3.1)	(2.0)		(2.8)
825 -	825	795	270	238	287	795					647	48		101
		(2.7)	(3.2)	(2.2)	(2.9)	(3.2)					(3.1)	(2.0)		(2.8)
826 -	826	819	270	238	311	819					670	48		101
		(2.8)	(3.2)	(2.2)	(3.1)	(3.3)					(3.2)	(2.0)		(2.8)
827 -	827	819	270	238	311	819					670	48		101
		(2.8)	(3.2)	(2.2)	(3.1)	(3.3)					(3.2)	(2.0)		(2.8)
828 -	828	819	270	238	311	819					670	48		101
		(2.8)	(3.2)	(2.2)	(3.1)	(3.3)					(3.2)	(2.0)		(2.8)
829 -	829	819	270	238	311	819					670	48		101
		(2.8)	(3.2)	(2.2)	(3.1)	(3.3)					(3.2)	(2.0)		(2.8)
830 -	830	819	270	238	311	819					670	48		101
		(2.8)	(3.2)	(2.2)	(3.1)	(3.3)					(3.2)	(2.0)		(2.8)
831 -	831	819	270	238	311	819					670	48		101
		(2.8)	(3.2)	(2.2)	(3.1)	(3.3)					(3.2)	(2.0)		(2.8)
832 -	832	842	270	261	311	819	23				670	48	23	101
		(2.9)	(3.2)	(2.4)	(3.1)	(3.3)	(0.6)				(3.2)	(2.0)	(1.2)	(2.8)
833 -	833	1,351	421	520	409	1,155	196				973	155	23	200
		(4.6)	(5.0)	(4.9)	(4.1)	(4.6)	(4.7)				(4.7)	(6.6)	(1.2)	(5.5)
834 -	834	1,351	421	520	409	1,155	196				973	155	23	200
		(4.6)	(5.0)	(4.9)	(4.1)	(4.6)	(4.7)				(4.7)	(6.6)	(1.2)	(5.5)
835 -	835	1,567	421	736	409	1,359	208				1,053	178	46	290
		(5.4)	(5.0)	(6.9)	(4.1)	(5.4)	(5.0)				(5.1)	(7.6)	(2.4)	(8.0)
836 -	836	1,567	421	736	409	1,359	208				1,053	178	46	290
		(5.4)	(5.0)	(6.9)	(4.1)	(5.4)	(5.0)				(5.1)	(7.6)	(2.4)	(8.0)
837 -	837	1,567	421	736	409	1,359	208				1,053	178	46	290
		(5.4)	(5.0)	(6.9)	(4.1)	(5.4)	(5.0)				(5.1)	(7.6)	(2.4)	(8.0)
838 -	838	1,567	421	736	409	1,359	208				1,053	178	46	290
		(5.4)	(5.0)	(6.9)	(4.1)	(5.4)	(5.0)				(5.1)	(7.6)	(2.4)	(8.0)
839 -	839	1,571	421	736	414	1,364	208				1,053	178	50	290
		(5.4)	(5.0)	(6.9)	(4.2)	(5.5)	(5.0)				(5.1)	(7.6)	(2.7)	(8.0)
840 -	840	1,806	561	807	438	1,431	374		13		1,220	178	105	290
		(6.2)	(6.6)	(7.5)	(4.4)	(5.7)	(9.1)		(100.0)		(5.9)	(7.6)	(5.6)	(8.0)
841 -	841	1,829	561	831	438	1,455	374				1,243	178	105	290
		(6.3)	(6.6)	(7.8)	(4.4)	(5.8)	(9.1)				(6.0)	(7.6)	(5.6)	(8.0)
842 -	842	1,841	561	843	438	1,455	386				1,243	178	105	302
		(6.3)	(6.6)	(7.9)	(4.4)	(5.8)	(9.3)				(6.0)	(7.6)	(5.6)	(8.3)
843 -	843	1,949	561	855	533	1,563	386				1,256	178	105	398
		(6.7)	(6.6)	(8.0)	(5.4)	(6.2)	(9.3)				(6.1)	(7.6)	(5.6)	(11.0)
844 -	844	2,125	561	925	640	1,670	456				1,432	178	105	398
		(7.3)	(6.6)	(8.6)	(6.4)	(6.7)	(11.0)				(6.9)	(7.6)	(5.6)	(11.0)
845 -	845	2,148	561	948	640	1,692	456				1,432	178	128	398
		(7.4)	(6.6)	(8.9)	(6.4)	(6.8)	(11.0)				(6.9)	(7.6)	(6.8)	(11.0)
846 -	846	2,148	561	948	640	1,692	456				1,432	178	128	398
		(7.4)	(6.6)	(8.9)	(6.4)	(6.8)	(11.0)				(6.9)	(7.6)	(6.8)	(11.0)
847 -	847	2,148	561	948	640	1,692	456				1,432	178	128	398
		(7.4)	(6.6)	(8.9)	(6.4)	(6.8)	(11.0)				(6.9)	(7.6)	(6.8)	(11.0)
848 -	848	2,171	561	971	640	1,716	456				1,455	178	128	398
		(7.4)	(6.6)	(9.1)	(6.4)	(6.9)	(11.0)				(7.0)	(7.6)	(6.8)	(11.0)

849	-	849	2,171 (7.4)	561 (6.6)	971 (9.1)	640 (6.4)	1,716 (6.9)	456 (11.0)					1,455 (7.0)	178 (7.6)	128 (6.8)	398 (11.0)
850	-	850	3,246 (11.1)	1,241 (14.6)	1,141 (10.7)	864 (8.7)	2,600 (10.4)	646 (15.6)				20 (3.7)	2,054 (9.9)	210 (8.9)	167 (8.9)	782 (21.6)
851	-	851	3,298 (11.3)	1,241 (14.6)	1,193 (11.2)	864 (8.7)	2,600 (10.4)	698 (16.9)				20 (3.7)	2,106 (10.2)	210 (8.9)	167 (8.9)	782 (21.6)
852		852	3,497 (12.0)	1,418 (16.7)	1,215 (11.4)	864 (8.7)	2,691 (10.8)	806 (19.5)				20 (3.7)	2,197 (10.6)	210 (8.9)	167 (8.9)	890 (24.6)
853		853	3,497 (12.0)	1,418 (16.7)	1,215 (11.4)	864 (8.7)	2,691 (10.8)	806 (19.5)				20 (3.7)	2,197 (10.6)	210 (8.9)	167 (8.9)	890 (24.6)
854		854	3,514 (12.1)	1,418 (16.7)	1,233 (11.5)	864 (8.7)	2,691 (10.8)	823 (19.9)				20 (3.7)	2,214 (10.7)	210 (8.9)	167 (8.9)	890 (24.6)
855		855	3,582 (12.3)	1,439 (16.9)	1,279 (12.0)	864 (8.7)	2,713 (10.8)	870 (21.1)				20 (3.7)	2,249 (10.8)	210 (8.9)	179 (9.5)	912 (25.2)
856		856	3,582 (12.3)	1,439 (16.9)	1,279 (12.0)	864 (8.7)	2,713 (10.8)	870 (21.1)				20 (3.7)	2,249 (10.8)	210 (8.9)	179 (9.5)	912 (25.2)
857		857	3,674 (12.6)	1,508 (17.8)	1,302 (12.2)	864 (8.7)	2,781 (11.1)	893 (21.6)				20 (3.7)	2,249 (10.8)	210 (8.9)	271 (14.4)	912 (25.2)
858		858	3,697 (12.7)	1,508 (17.8)	1,326 (12.4)	864 (8.7)	2,781 (11.1)	916 (22.2)				20 (3.7)	2,249 (10.8)	234 (9.9)	271 (14.4)	912 (25.2)
859		859	3,714 (12.7)	1,508 (17.8)	1,343 (12.6)	864 (8.7)	2,781 (11.1)	934 (22.6)				20 (3.7)	2,266 (10.9)	234 (9.9)	271 (14.4)	912 (25.2)
860		860	3,795 (13.0)	1,529 (18.0)	1,402 (13.1)	864 (8.7)	2,838 (11.3)	957 (23.2)				20 (3.7)	2,290 (11.0)	268 (11.4)	271 (14.4)	934 (25.8)
861		861	3,795 (13.0)	1,529 (18.0)	1,402 (13.1)	864 (8.7)	2,838 (11.3)	957 (23.2)				20 (3.7)	2,290 (11.0)	268 (11.4)	271 (14.4)	934 (25.8)
862		862	3,795 (13.0)	1,529 (18.0)	1,402 (13.1)	864 (8.7)	2,838 (11.3)	957 (23.2)				20 (3.7)	2,290 (11.0)	268 (11.4)	271 (14.4)	934 (25.8)
863		863	3,836 (13.2)	1,529 (18.0)	1,443 (13.5)	864 (8.7)	2,838 (11.3)	998 (24.2)				20 (3.7)	2,330 (11.2)	268 (11.4)	271 (14.4)	934 (25.8)
864		864	3,836 (13.2)	1,529 (18.0)	1,443 (13.5)	864 (8.7)	2,838 (11.3)	998 (24.2)				20 (3.7)	2,330 (11.2)	268 (11.4)	271 (14.4)	934 (25.8)
865		865	3,836 (13.2)	1,529 (18.0)	1,443 (13.5)	864 (8.7)	2,838 (11.3)	998 (24.2)				20 (3.7)	2,330 (11.2)	268 (11.4)	271 (14.4)	934 (25.8)
866		866	3,870 (13.3)	1,529 (18.0)	1,477 (13.8)	864 (8.7)	2,838 (11.3)	1,032 (25.0)				20 (3.7)	2,365 (11.4)	268 (11.4)	271 (14.4)	934 (25.8)
867		867	3,942 (13.5)	1,529 (18.0)	1,477 (13.8)	935 (9.4)	2,910 (11.6)	1,032 (25.0)				20 (3.7)	2,437 (11.7)	268 (11.4)	271 (14.4)	934 (25.8)
868		868	3,942 (13.5)	1,529 (18.0)	1,477 (13.8)	935 (9.4)	2,910 (11.6)	1,032 (25.0)				20 (3.7)	2,437 (11.7)	268 (11.4)	271 (14.4)	934 (25.8)
869		869	3,942 (13.5)	1,529 (18.0)	1,477 (13.8)	935 (9.4)	2,910 (11.6)	1,032 (25.0)				20 (3.7)	2,437 (11.7)	268 (11.4)	271 (14.4)	934 (25.8)
870		870	4,284 (14.7)	1,734 (20.4)	1,569 (14.7)	981 (9.8)	3,228 (12.9)	1,056 (25.6)				20 (3.7)	2,620 (12.6)	291 (12.4)	271 (14.4)	1,071 (29.6)
871		871	4,284 (14.7)	1,734 (20.4)	1,569 (14.7)	981 (9.8)	3,228 (12.9)	1,056 (25.6)				20 (3.7)	2,620 (12.6)	291 (12.4)	271 (14.4)	1,071 (29.6)
872		872	4,284 (14.7)	1,734 (20.4)	1,569 (14.7)	981 (9.8)	3,228 (12.9)	1,056 (25.6)				20 (3.7)	2,620 (12.6)	291 (12.4)	271 (14.4)	1,071 (29.6)
873		873	4,284 (14.7)	1,734 (20.4)	1,569 (14.7)	981 (9.8)	3,228 (12.9)	1,056 (25.6)				20 (3.7)	2,620 (12.6)	291 (12.4)	271 (14.4)	1,071 (29.6)
874		874	4,302 (14.8)	1,734 (20.4)	1,587 (14.8)	981 (9.8)	3,228 (12.9)	1,073 (26.0)				20 (3.7)	2,637 (12.7)	291 (12.4)	271 (14.4)	1,071 (29.6)
875		875	4,356 (14.9)	1,766 (20.8)	1,610 (15.1)	981 (9.8)	3,283 (13.1)	1,073 (26.0)				20 (3.7)	2,637 (12.7)	314 (13.4)	271 (14.4)	1,102 (30.4)
876		876	4,356 (14.9)	1,766 (20.8)	1,610 (15.1)	981 (9.8)	3,283 (13.1)	1,073 (26.0)				20 (3.7)	2,637 (12.7)	314 (13.4)	271 (14.4)	1,102 (30.4)
877		877	4,439 (15.2)	1,766 (20.8)	1,645 (15.4)	1,028 (10.3)	3,331 (13.3)	1,108 (26.8)				20 (3.7)	2,720 (13.1)	314 (13.4)	271 (14.4)	1,102 (30.4)
878		878	4,439 (15.2)	1,766 (20.8)	1,645 (15.4)	1,028 (10.3)	3,331 (13.3)	1,108 (26.8)				20 (3.7)	2,720 (13.1)	314 (13.4)	271 (14.4)	1,102 (30.4)

879	879	4,439 (15.2)	1,766 (20.8)	1,645 (15.4)	1,028 (10.3)	3,331 (13.3)	1,108 (26.8)				20 (3.7)	2,720 (13.1)	314 (13.4)	271 (14.4)	1,102 (30.4)
880	880	4,463 (15.3)	1,766 (20.8)	1,669 (15.6)	1,028 (10.3)	3,343 (13.4)	1,120 (27.1)				20 (3.7)	2,743 (13.2)	314 (13.4)	271 (14.4)	1,102 (30.4)
881	881	4,494 (15.4)	1,797 (21.2)	1,669 (15.6)	1,028 (10.3)	3,374 (13.5)	1,120 (27.1)				51 (9.6)	2,743 (13.2)	314 (13.4)	271 (14.4)	1,102 (30.4)
882	882	4,542 (15.6)	1,797 (21.2)	1,669 (15.6)	1,076 (10.8)	3,422 (13.7)	1,120 (27.1)				51 (9.6)	2,791 (13.5)	314 (13.4)	271 (14.4)	1,102 (30.4)
883	883	4,577 (15.7)	1,797 (21.2)	1,704 (15.9)	1,076 (10.8)	3,422 (13.7)	1,155 (28.0)				51 (9.6)	2,826 (13.6)	314 (13.4)	271 (14.4)	1,102 (30.4)
884	889	4,765 (16.3)	1,881 (22.1)	1,808 (16.9)	1,076 (10.8)	3,528 (14.1)	1,237 (29.9)				51 (9.6)	2,980 (14.4)	337 (14.3)	283 (15.0)	1,102 (30.4)
890	899	4,907 (16.8)	1,924 (22.7)	1,883 (17.6)	1,100 (11.0)	3,618 (14.5)	1,289 (31.2)				51 (9.6)	3,061 (14.8)	398 (16.9)	283 (15.0)	1,102 (30.4)
900	909	6,182 (21.2)	2,310 (27.2)	2,273 (21.2)	1,600 (16.1)	4,791 (19.2)	1,391 (33.7)				141 (26.6)	3,573 (17.2)	422 (17.9)	356 (18.9)	1,677 (46.3)
910	919	6,424 (22.0)	2,310 (27.2)	2,373 (22.2)	1,741 (17.5)	4,980 (19.9)	1,444 (34.9)				141 (26.6)	3,684 (17.8)	445 (18.9)	368 (19.5)	1,773 (48.9)
920	929	7,055 (24.2)	2,536 (29.9)	2,757 (25.8)	1,762 (17.7)	5,548 (22.2)	1,507 (36.5)				141 (26.6)	4,270 (20.6)	445 (18.9)	391 (20.8)	1,794 (49.5)
930	939	7,146 (24.5)	2,536 (29.9)	2,848 (26.6)	1,762 (17.7)	5,617 (22.5)	1,530 (37.0)				141 (26.6)	4,294 (20.7)	468 (19.9)	391 (20.8)	1,839 (50.8)
940	949	7,403 (25.4)	2,567 (30.2)	2,957 (27.6)	1,879 (18.9)	5,788 (23.1)	1,615 (39.1)				141 (26.6)	4,483 (21.6)	492 (20.9)	404 (21.5)	1,870 (51.6)
950	959	7,966 (27.3)	2,645 (31.1)	3,067 (28.7)	2,255 (22.6)	6,212 (24.8)	1,754 (42.5)				232 (43.6)	4,870 (23.5)	538 (22.9)	404 (21.5)	1,909 (52.7)
960	969	8,178 (28.1)	2,713 (31.9)	3,124 (29.2)	2,341 (23.5)	6,395 (25.6)	1,783 (43.2)				232 (43.6)	4,968 (23.9)	606 (25.8)	427 (22.7)	1,932 (53.3)
970	979	8,610 (29.5)	2,781 (32.8)	3,247 (30.4)	2,581 (25.9)	6,752 (27.0)	1,858 (45.0)				283 (53.2)	5,259 (25.4)	619 (26.3)	436 (23.1)	2,000 (55.2)
980	989	8,881 (30.5)	2,850 (33.6)	3,259 (30.5)	2,772 (27.8)	6,989 (27.9)	1,891 (45.8)				304 (57.2)	5,508 (26.6)	619 (26.3)	436 (23.1)	2,000 (55.2)
990	999	9,047 (31.0)	2,918 (34.4)	3,271 (30.6)	2,858 (28.7)	7,127 (28.5)	1,920 (46.5)				304 (57.2)	5,674 (27.4)	619 (26.3)	436 (23.1)	2,000 (55.2)
1000	1099	12,532 (43.0)	3,977 (46.8)	4,259 (39.8)	4,296 (43.1)	10,184 (40.7)	2,348 (56.8)				478 (89.9)	8,031 (38.7)	788 (33.5)	717 (38.1)	2,504 (69.1)
1100	1199	15,189 (52.1)	4,846 (57.1)	5,269 (49.3)	5,074 (50.9)	12,389 (49.5)	2,800 (67.8)				478 (89.9)	10,024 (48.3)	945 (40.2)	816 (43.3)	2,913 (80.4)
1200	1299	17,732 (60.8)	5,660 (66.7)	6,280 (58.7)	5,792 (58.1)	14,657 (58.6)	3,075 (74.4)				532 (100.0)	12,090 (58.3)	1,141 (48.5)	933 (49.5)	3,024 (83.5)
1300	1399	19,779 (67.9)	6,071 (71.5)	7,277 (68.0)	6,430 (64.6)	16,374 (65.5)	3,404 (82.4)					13,784 (66.4)	1,222 (52.0)	1,075 (57.1)	3,152 (87.0)
1400	1499	21,360 (73.3)	6,743 (79.4)	7,679 (71.8)	6,938 (69.7)	17,756 (71.0)	3,604 (87.2)					15,043 (72.5)	1,341 (57.0)	1,193 (63.3)	3,239 (89.4)
1500		29,149 (100.0)	8,492 (100.0)	10,697 (100.0)	9,960 (100.0)	25,018 (100.0)	4,131 (100.0)					20,745 (100.0)	2,353 (100.0)	1,884 (100.0)	3,624 (100.0)
月平均賃金額		204,816	185,888	211,455	213,825	209,458	176,703			138,180	115,979	212,621	242,328	231,027	135,424
時間当平均賃金額		1,298	1,244	1,281	1,364	1,327	1,128			840	988	1,318	1,461	1,436	1,055
月一人当たり労働時間数		156	149	164	153	156	155			165	116	161	163	158	126
第1・20分位数		835	840	835	843	835	835			840	881	835	833	840	833
第1・10分位数		850	850	850	877	850	844			840	900	851	860	857	843
第1・4分位数		944	907	922	972	960	870			840	900	974	960	1,000	855
中位数		1,176	1,136	1,204	1,190	1,204	1,002			840	973	1,211	1,375	1,312	930
四分位偏差係数		0.2526	0.2339	0.2602	0.2653	0.2573	0.2162			0.0004	0.0576	0.2371	0.3138	0.2977	0.1514

【上段】

累積労働者数

【下段】

累積構成比

総括表(1) (産業・就業形態別の賃金額階級別、規模別、地域別、年齢別表)

03年

総括表(1)

産業：卸売業、小売業

就業形態：(全て)

産別適用除外含む全労働者

時間当り所定内賃金額 (3手当を除く)	合計	規模別			地域別				年齢別					
		1～9人	10～29人	30～99人	加賀	能登			17歳以下	18～19歳	20～54歳	55～59歳	60～64歳	65歳以上
計	63,385	31,402	31,983		54,532	8,853			213	1,047	45,643	5,706	4,410	6,365
円	989	864	124		494	495			35		550	77	65	261
-	822	(1.6)	(2.8)	(0.4)	(0.9)	(5.6)			(16.7)		(1.2)	(1.3)	(1.5)	(4.1)
823 -	823	989	864	124	494	495			35		550	77	65	261
		(1.6)	(2.8)	(0.4)	(0.9)	(5.6)			(16.7)		(1.2)	(1.3)	(1.5)	(4.1)
824 -	824	989	864	124	494	495			35		550	77	65	261
		(1.6)	(2.8)	(0.4)	(0.9)	(5.6)			(16.7)		(1.2)	(1.3)	(1.5)	(4.1)
825 -	825	1,024	864	160	529	495			35		585	77	65	261
		(1.6)	(2.8)	(0.5)	(1.0)	(5.6)			(16.7)		(1.3)	(1.3)	(1.5)	(4.1)
826 -	826	1,051	864	187	529	521			35		612	77	65	261
		(1.7)	(2.8)	(0.6)	(1.0)	(5.9)			(16.7)		(1.3)	(1.3)	(1.5)	(4.1)
827 -	827	1,051	864	187	529	521			35		612	77	65	261
		(1.7)	(2.8)	(0.6)	(1.0)	(5.9)			(16.7)		(1.3)	(1.3)	(1.5)	(4.1)
828 -	828	1,087	901	187	529	558			35		649	77	65	261
		(1.7)	(2.9)	(0.6)	(1.0)	(6.3)			(16.7)		(1.4)	(1.3)	(1.5)	(4.1)
829 -	829	1,087	901	187	529	558			35		649	77	65	261
		(1.7)	(2.9)	(0.6)	(1.0)	(6.3)			(16.7)		(1.4)	(1.3)	(1.5)	(4.1)
830 -	830	1,164	978	187	606	558			35		649	77	65	338
		(1.8)	(3.1)	(0.6)	(1.1)	(6.3)			(16.7)		(1.4)	(1.3)	(1.5)	(5.3)
831 -	831	1,164	978	187	606	558			35		649	77	65	338
		(1.8)	(3.1)	(0.6)	(1.1)	(6.3)			(16.7)		(1.4)	(1.3)	(1.5)	(5.3)
832 -	832	1,164	978	187	606	558			35		649	77	65	338
		(1.8)	(3.1)	(0.6)	(1.1)	(6.3)			(16.7)		(1.4)	(1.3)	(1.5)	(5.3)
833 -	833	2,014	1,508	506	1,165	849			35	35	1,224	104	104	512
		(3.2)	(4.8)	(1.6)	(2.1)	(9.6)			(16.7)	(3.4)	(2.7)	(1.8)	(2.3)	(8.0)
834 -	834	2,014	1,508	506	1,165	849			35	35	1,224	104	104	512
		(3.2)	(4.8)	(1.6)	(2.1)	(9.6)			(16.7)	(3.4)	(2.7)	(1.8)	(2.3)	(8.0)
835 -	835	2,088	1,546	542	1,239	849			35	35	1,224	104	142	548
		(3.3)	(4.9)	(1.7)	(2.3)	(9.6)			(16.7)	(3.4)	(2.7)	(1.8)	(3.2)	(8.6)
836 -	836	2,088	1,546	542	1,239	849			35	35	1,224	104	142	548
		(3.3)	(4.9)	(1.7)	(2.3)	(9.6)			(16.7)	(3.4)	(2.7)	(1.8)	(3.2)	(8.6)
837 -	837	2,088	1,546	542	1,239	849			35	35	1,224	104	142	548
		(3.3)	(4.9)	(1.7)	(2.3)	(9.6)			(16.7)	(3.4)	(2.7)	(1.8)	(3.2)	(8.6)
838 -	838	2,123	1,546	577	1,275	849			35	35	1,224	104	142	583
		(3.3)	(4.9)	(1.8)	(2.3)	(9.6)			(16.7)	(3.4)	(2.7)	(1.8)	(3.2)	(9.2)
839 -	839	2,123	1,546	577	1,275	849			35	35	1,224	104	142	583
		(3.3)	(4.9)	(1.8)	(2.3)	(9.6)			(16.7)	(3.4)	(2.7)	(1.8)	(3.2)	(9.2)
840 -	840	3,602	2,138	1,464	2,239	1,363			142	142	1,767	104	285	1,162
		(5.7)	(6.8)	(4.6)	(4.1)	(15.4)			(66.7)	(13.6)	(3.9)	(1.8)	(6.5)	(18.3)
841 -	841	3,639	2,175	1,464	2,239	1,400			142	142	1,804	104	285	1,162
		(5.7)	(6.9)	(4.6)	(4.1)	(15.8)			(66.7)	(13.6)	(4.0)	(1.8)	(6.5)	(18.3)
842 -	842	3,666	2,175	1,491	2,239	1,427			142	142	1,830	104	285	1,162
		(5.8)	(6.9)	(4.7)	(4.1)	(16.1)			(66.7)	(13.6)	(4.0)	(1.8)	(6.5)	(18.3)
843 -	843	3,666	2,175	1,491	2,239	1,427			142	142	1,830	104	285	1,162
		(5.8)	(6.9)	(4.7)	(4.1)	(16.1)			(66.7)	(13.6)	(4.0)	(1.8)	(6.5)	(18.3)
844 -	844	3,701	2,175	1,526	2,274	1,427			142	142	1,830	104	285	1,198
		(5.8)	(6.9)	(4.8)	(4.2)	(16.1)			(66.7)	(13.6)	(4.0)	(1.8)	(6.5)	(18.8)
845 -	845	3,775	2,213	1,562	2,348	1,427			142	142	1,869	104	285	1,233
		(6.0)	(7.0)	(4.9)	(4.3)	(16.1)			(66.7)	(13.6)	(4.1)	(1.8)	(6.5)	(19.4)
846 -	846	3,775	2,213	1,562	2,348	1,427			142	142	1,869	104	285	1,233
		(6.0)	(7.0)	(4.9)	(4.3)	(16.1)			(66.7)	(13.6)	(4.1)	(1.8)	(6.5)	(19.4)
847 -	847	3,775	2,213	1,562	2,348	1,427			142	142	1,869	104	285	1,233
		(6.0)	(7.0)	(4.9)	(4.3)	(16.1)			(66.7)	(13.6)	(4.1)	(1.8)	(6.5)	(19.4)
848 -	848	3,775	2,213	1,562	2,348	1,427			142	142	1,869	104	285	1,233
		(6.0)	(7.0)	(4.9)	(4.3)	(16.1)			(66.7)	(13.6)	(4.1)	(1.8)	(6.5)	(19.4)

849	-	849	3,775 (6.0)	2,213 (7.0)	1,562 (4.9)		2,348 (4.3)	1,427 (16.1)			142 (66.7)	142 (13.6)	1,869 (4.1)	104 (1.8)	285 (6.5)	1,233 (19.4)
850	-	850	6,673 (10.5)	3,664 (11.7)	3,009 (9.4)		4,572 (8.4)	2,101 (23.7)			213 (100.0)	396 (37.8)	3,605 (7.9)	278 (4.9)	553 (12.5)	1,628 (25.6)
851	-	851	6,923 (10.9)	3,701 (11.8)	3,222 (10.1)		4,785 (8.8)	2,138 (24.1)				396 (37.8)	3,818 (8.4)	278 (4.9)	553 (12.5)	1,665 (26.2)
852		852	6,961 (11.0)	3,739 (11.9)	3,222 (10.1)		4,824 (8.8)	2,138 (24.1)				396 (37.8)	3,857 (8.4)	278 (4.9)	553 (12.5)	1,665 (26.2)
853		853	6,961 (11.0)	3,739 (11.9)	3,222 (10.1)		4,824 (8.8)	2,138 (24.1)				396 (37.8)	3,857 (8.4)	278 (4.9)	553 (12.5)	1,665 (26.2)
854		854	7,174 (11.3)	3,739 (11.9)	3,435 (10.7)		5,037 (9.2)	2,138 (24.1)				396 (37.8)	4,034 (8.8)	314 (5.5)	553 (12.5)	1,665 (26.2)
855		855	7,263 (11.5)	3,739 (11.9)	3,524 (11.0)		5,072 (9.3)	2,191 (24.7)				396 (37.8)	4,123 (9.0)	314 (5.5)	553 (12.5)	1,665 (26.2)
856		856	7,263 (11.5)	3,739 (11.9)	3,524 (11.0)		5,072 (9.3)	2,191 (24.7)				396 (37.8)	4,123 (9.0)	314 (5.5)	553 (12.5)	1,665 (26.2)
857		857	7,263 (11.5)	3,739 (11.9)	3,524 (11.0)		5,072 (9.3)	2,191 (24.7)				396 (37.8)	4,123 (9.0)	314 (5.5)	553 (12.5)	1,665 (26.2)
858		858	7,290 (11.5)	3,739 (11.9)	3,551 (11.1)		5,072 (9.3)	2,218 (25.1)				423 (40.4)	4,123 (9.0)	314 (5.5)	553 (12.5)	1,665 (26.2)
859		859	7,290 (11.5)	3,739 (11.9)	3,551 (11.1)		5,072 (9.3)	2,218 (25.1)				423 (40.4)	4,123 (9.0)	314 (5.5)	553 (12.5)	1,665 (26.2)
860		860	8,270 (13.0)	4,115 (13.1)	4,154 (13.0)		5,761 (10.6)	2,508 (28.3)				458 (43.8)	4,903 (10.7)	314 (5.5)	628 (14.2)	1,753 (27.5)
861		861	8,346 (13.2)	4,192 (13.4)	4,154 (13.0)		5,838 (10.7)	2,508 (28.3)				458 (43.8)	4,980 (10.9)	314 (5.5)	628 (14.2)	1,753 (27.5)
862		862	8,346 (13.2)	4,192 (13.4)	4,154 (13.0)		5,838 (10.7)	2,508 (28.3)				458 (43.8)	4,980 (10.9)	314 (5.5)	628 (14.2)	1,753 (27.5)
863		863	8,382 (13.2)	4,192 (13.4)	4,190 (13.1)		5,874 (10.8)	2,508 (28.3)				458 (43.8)	5,015 (11.0)	314 (5.5)	628 (14.2)	1,753 (27.5)
864		864	8,420 (13.3)	4,231 (13.5)	4,190 (13.1)		5,912 (10.8)	2,508 (28.3)				458 (43.8)	5,015 (11.0)	314 (5.5)	667 (15.1)	1,753 (27.5)
865		865	8,829 (13.9)	4,577 (14.6)	4,252 (13.3)		6,294 (11.5)	2,535 (28.6)				458 (43.8)	5,388 (11.8)	314 (5.5)	667 (15.1)	1,789 (28.1)
866		866	8,829 (13.9)	4,577 (14.6)	4,252 (13.3)		6,294 (11.5)	2,535 (28.6)				458 (43.8)	5,388 (11.8)	314 (5.5)	667 (15.1)	1,789 (28.1)
867		867	8,903 (14.0)	4,615 (14.7)	4,287 (13.4)		6,368 (11.7)	2,535 (28.6)				458 (43.8)	5,424 (11.9)	314 (5.5)	705 (16.0)	1,789 (28.1)
868		868	8,938 (14.1)	4,615 (14.7)	4,323 (13.5)		6,403 (11.7)	2,535 (28.6)				458 (43.8)	5,459 (12.0)	314 (5.5)	705 (16.0)	1,789 (28.1)
869		869	8,938 (14.1)	4,615 (14.7)	4,323 (13.5)		6,403 (11.7)	2,535 (28.6)				458 (43.8)	5,459 (12.0)	314 (5.5)	705 (16.0)	1,789 (28.1)
870		870	9,546 (15.1)	4,806 (15.3)	4,740 (14.8)		6,947 (12.7)	2,598 (29.4)				458 (43.8)	5,928 (13.0)	352 (6.2)	779 (17.7)	1,816 (28.5)
871		871	9,617 (15.2)	4,806 (15.3)	4,811 (15.0)		7,018 (12.9)	2,598 (29.4)				494 (47.2)	5,963 (13.1)	352 (6.2)	779 (17.7)	1,816 (28.5)
872		872	9,652 (15.2)	4,806 (15.3)	4,846 (15.2)		7,054 (12.9)	2,598 (29.4)				494 (47.2)	5,963 (13.1)	388 (6.8)	779 (17.7)	1,816 (28.5)
873		873	9,652 (15.2)	4,806 (15.3)	4,846 (15.2)		7,054 (12.9)	2,598 (29.4)				494 (47.2)	5,963 (13.1)	388 (6.8)	779 (17.7)	1,816 (28.5)
874		874	9,652 (15.2)	4,806 (15.3)	4,846 (15.2)		7,054 (12.9)	2,598 (29.4)				494 (47.2)	5,963 (13.1)	388 (6.8)	779 (17.7)	1,816 (28.5)
875		875	9,865 (15.6)	4,921 (15.7)	4,944 (15.5)		7,240 (13.3)	2,625 (29.7)				494 (47.2)	6,141 (13.5)	388 (6.8)	779 (17.7)	1,851 (29.1)
876		876	9,904 (15.6)	4,960 (15.8)	4,944 (15.5)		7,279 (13.3)	2,625 (29.7)				494 (47.2)	6,179 (13.5)	388 (6.8)	779 (17.7)	1,851 (29.1)
877		877	9,904 (15.6)	4,960 (15.8)	4,944 (15.5)		7,279 (13.3)	2,625 (29.7)				494 (47.2)	6,179 (13.5)	388 (6.8)	779 (17.7)	1,851 (29.1)
878		878	9,904 (15.6)	4,960 (15.8)	4,944 (15.5)		7,279 (13.3)	2,625 (29.7)				494 (47.2)	6,179 (13.5)	388 (6.8)	779 (17.7)	1,851 (29.1)

879	879	9,904 (15.6)	4,960 (15.8)	4,944 (15.5)	7,279 (13.3)	2,625 (29.7)				494 (47.2)	6,179 (13.5)	388 (6.8)	779 (17.7)	1,851 (29.1)
880	880	10,919 (17.2)	5,301 (16.9)	5,619 (17.6)	7,971 (14.6)	2,949 (33.3)				494 (47.2)	6,793 (14.9)	542 (9.5)	841 (19.1)	2,037 (32.0)
881	881	10,996 (17.3)	5,378 (17.1)	5,619 (17.6)	8,048 (14.8)	2,949 (33.3)				494 (47.2)	6,870 (15.1)	542 (9.5)	841 (19.1)	2,037 (32.0)
882	882	10,996 (17.3)	5,378 (17.1)	5,619 (17.6)	8,048 (14.8)	2,949 (33.3)				494 (47.2)	6,870 (15.1)	542 (9.5)	841 (19.1)	2,037 (32.0)
883	883	10,996 (17.3)	5,378 (17.1)	5,619 (17.6)	8,048 (14.8)	2,949 (33.3)				494 (47.2)	6,870 (15.1)	542 (9.5)	841 (19.1)	2,037 (32.0)
884	889	11,174 (17.6)	5,378 (17.1)	5,796 (18.1)	8,225 (15.1)	2,949 (33.3)				494 (47.2)	7,047 (15.4)	542 (9.5)	841 (19.1)	2,037 (32.0)
890	899	12,294 (19.4)	5,913 (18.8)	6,382 (20.0)	9,219 (16.9)	3,076 (34.7)				494 (47.2)	7,840 (17.2)	686 (12.0)	915 (20.7)	2,146 (33.7)
900	909	15,927 (25.1)	7,788 (24.8)	8,139 (25.4)	12,614 (23.1)	3,313 (37.4)				636 (60.7)	10,211 (22.4)	1,019 (17.9)	1,252 (28.4)	2,596 (40.8)
910	919	16,427 (25.9)	8,058 (25.7)	8,369 (26.2)	13,061 (24.0)	3,366 (38.0)				636 (60.7)	10,492 (23.0)	1,057 (18.5)	1,326 (30.1)	2,702 (42.5)
920	929	17,488 (27.6)	8,781 (28.0)	8,707 (27.2)	13,921 (25.5)	3,567 (40.3)				636 (60.7)	11,305 (24.8)	1,093 (19.2)	1,430 (32.4)	2,812 (44.2)
930	939	18,532 (29.2)	9,239 (29.4)	9,292 (29.1)	14,838 (27.2)	3,694 (41.7)				636 (60.7)	12,096 (26.5)	1,167 (20.4)	1,430 (32.4)	2,990 (47.0)
940	949	18,918 (29.8)	9,430 (30.0)	9,488 (29.7)	15,134 (27.8)	3,784 (42.7)				674 (64.4)	12,333 (27.0)	1,241 (21.7)	1,430 (32.4)	3,027 (47.6)
950	959	21,279 (33.6)	10,390 (33.1)	10,890 (34.0)	17,405 (31.9)	3,874 (43.8)				745 (71.2)	13,747 (30.1)	1,427 (25.0)	1,569 (35.6)	3,578 (56.2)
960	969	21,992 (34.7)	10,659 (33.9)	11,333 (35.4)	18,065 (33.1)	3,927 (44.4)				745 (71.2)	14,309 (31.3)	1,466 (25.7)	1,646 (37.3)	3,614 (56.8)
970	979	22,526 (35.5)	10,811 (34.4)	11,715 (36.6)	18,535 (34.0)	3,991 (45.1)				745 (71.2)	14,709 (32.2)	1,501 (26.3)	1,672 (37.9)	3,685 (57.9)
980	989	23,097 (36.4)	10,965 (34.9)	12,132 (37.9)	19,079 (35.0)	4,017 (45.4)				745 (71.2)	15,040 (33.0)	1,501 (26.3)	1,708 (38.7)	3,889 (61.1)
990	999	23,360 (36.9)	11,042 (35.2)	12,318 (38.5)	19,263 (35.3)	4,097 (46.3)				745 (71.2)	15,277 (33.5)	1,501 (26.3)	1,708 (38.7)	3,916 (61.5)
1000	1099	29,200 (46.1)	14,786 (47.1)	14,413 (45.1)	24,161 (44.3)	5,039 (56.9)				1,012 (96.6)	19,182 (42.0)	1,854 (32.5)	2,406 (54.5)	4,534 (71.2)
1100	1199	33,698 (53.2)	17,413 (55.5)	16,286 (50.9)	27,831 (51.0)	5,867 (66.3)				1,047 (100.0)	22,611 (49.5)	2,119 (37.1)	2,800 (63.5)	4,909 (77.1)
1200	1299	36,941 (58.3)	18,712 (59.6)	18,229 (57.0)	30,650 (56.2)	6,291 (71.1)					25,116 (55.0)	2,328 (40.8)	3,007 (68.2)	5,230 (82.2)
1300	1399	41,029 (64.7)	20,510 (65.3)	20,519 (64.2)	34,394 (63.1)	6,635 (74.9)					28,464 (62.4)	2,625 (46.0)	3,303 (74.9)	5,378 (84.5)
1400	1499	44,182 (69.7)	22,191 (70.7)	21,992 (68.8)	37,130 (68.1)	7,053 (79.7)					31,143 (68.2)	2,925 (51.3)	3,329 (75.5)	5,525 (86.8)
1500		63,385 (100.0)	31,402 (100.0)	31,983 (100.0)	54,532 (100.0)	8,853 (100.0)					45,643 (100.0)	5,706 (100.0)	4,410 (100.0)	6,365 (100.0)
月平均賃金額		203,689	202,072	205,276	207,522	180,078			53,717	81,705	215,226	251,844	177,523	120,997
時間当平均賃金額		1,361	1,351	1,371	1,380	1,248			840	916	1,390	1,580	1,251	1,124
月一人当たり労働時間数		143	143	142	143	142			64	89	149	154	137	106
第1・20分位数		840	840	850	850	800			820	840	850	854	840	830
第1・10分位数		850	850	851	860	840			820	840	860	890	850	840
第1・4分位数		909	910	902	920	858			840	850	930	953	900	850
中位数		1,150	1,130	1,183	1,176	1,030			840	900	1,202	1,467	1,050	950
四分位偏差係数		0.3121	0.3122	0.3079	0.3115	0.2728			0.0061	0.0834	0.3014	0.3162	0.2587	0.1580

【上段】

累積労働者数

【下段】

累積構成比

総括表(1) (産業・就業形態別の賃金額階級別、規模別、地域別、年齢別表)

03年

総括表(1)

産業：宿泊業、飲食サービス業

就業形態：(全て)

産別適用除外含む全労働者

時間当り所定内賃金額 (3手当を除く)	合計	規模別			地域別				年齢別					
		1～9人	10～29人	30～99人	加賀	能登			17歳以下	18～19歳	20～54歳	55～59歳	60～64歳	65歳以上
計	30,973	14,743	16,230		27,678	3,295			1,654	3,462	16,534	2,010	2,044	5,269
円	489	306	183		489				44		314			131
- 822	(1.6)	(2.1)	(1.1)		(1.8)				(2.7)		(1.9)			(2.5)
823 - 823	489 (1.6)	306 (2.1)	183 (1.1)		489 (1.8)				44 (2.7)		314 (1.9)			131 (2.5)
824 - 824	489 (1.6)	306 (2.1)	183 (1.1)		489 (1.8)				44 (2.7)		314 (1.9)			131 (2.5)
825 - 825	509 (1.6)	306 (2.1)	203 (1.3)		489 (1.8)	20 (0.6)			44 (2.7)		314 (1.9)			152 (2.9)
826 - 826	509 (1.6)	306 (2.1)	203 (1.3)		489 (1.8)	20 (0.6)			44 (2.7)		314 (1.9)			152 (2.9)
827 - 827	509 (1.6)	306 (2.1)	203 (1.3)		489 (1.8)	20 (0.6)			44 (2.7)		314 (1.9)			152 (2.9)
828 - 828	509 (1.6)	306 (2.1)	203 (1.3)		489 (1.8)	20 (0.6)			44 (2.7)		314 (1.9)			152 (2.9)
829 - 829	509 (1.6)	306 (2.1)	203 (1.3)		489 (1.8)	20 (0.6)			44 (2.7)		314 (1.9)			152 (2.9)
830 - 830	553 (1.8)	350 (2.4)	203 (1.3)		533 (1.9)	20 (0.6)			44 (2.7)		314 (1.9)			196 (3.7)
831 - 831	553 (1.8)	350 (2.4)	203 (1.3)		533 (1.9)	20 (0.6)			44 (2.7)		314 (1.9)			196 (3.7)
832 - 832	573 (1.9)	370 (2.5)	203 (1.3)		553 (2.0)	20 (0.6)			44 (2.7)		334 (2.0)			196 (3.7)
833 - 833	825 (2.7)	545 (3.7)	280 (1.7)		805 (2.9)	20 (0.6)			44 (2.7)		459 (2.8)	126 (6.3)		196 (3.7)
834 - 834	825 (2.7)	545 (3.7)	280 (1.7)		805 (2.9)	20 (0.6)			44 (2.7)		459 (2.8)	126 (6.3)		196 (3.7)
835 - 835	1,947 (6.3)	763 (5.2)	1,184 (7.3)		1,927 (7.0)	20 (0.6)			135 (8.2)	274 (7.9)	844 (5.1)	126 (6.3)	77 (3.8)	491 (9.3)
836 - 836	1,947 (6.3)	763 (5.2)	1,184 (7.3)		1,927 (7.0)	20 (0.6)			135 (8.2)	274 (7.9)	844 (5.1)	126 (6.3)	77 (3.8)	491 (9.3)
837 - 837	1,947 (6.3)	763 (5.2)	1,184 (7.3)		1,927 (7.0)	20 (0.6)			135 (8.2)	274 (7.9)	844 (5.1)	126 (6.3)	77 (3.8)	491 (9.3)
838 - 838	1,947 (6.3)	763 (5.2)	1,184 (7.3)		1,927 (7.0)	20 (0.6)			135 (8.2)	274 (7.9)	844 (5.1)	126 (6.3)	77 (3.8)	491 (9.3)
839 - 839	1,947 (6.3)	763 (5.2)	1,184 (7.3)		1,927 (7.0)	20 (0.6)			135 (8.2)	274 (7.9)	844 (5.1)	126 (6.3)	77 (3.8)	491 (9.3)
840 - 840	2,589 (8.4)	1,314 (8.9)	1,275 (7.9)		2,569 (9.3)	20 (0.6)			222 (13.4)	317 (9.2)	1,058 (6.4)	126 (6.3)	117 (5.7)	748 (14.2)
841 - 841	2,589 (8.4)	1,314 (8.9)	1,275 (7.9)		2,569 (9.3)	20 (0.6)			222 (13.4)	317 (9.2)	1,058 (6.4)	126 (6.3)	117 (5.7)	748 (14.2)
842 - 842	2,589 (8.4)	1,314 (8.9)	1,275 (7.9)		2,569 (9.3)	20 (0.6)			222 (13.4)	317 (9.2)	1,058 (6.4)	126 (6.3)	117 (5.7)	748 (14.2)
843 - 843	2,589 (8.4)	1,314 (8.9)	1,275 (7.9)		2,569 (9.3)	20 (0.6)			222 (13.4)	317 (9.2)	1,058 (6.4)	126 (6.3)	117 (5.7)	748 (14.2)
844 - 844	2,589 (8.4)	1,314 (8.9)	1,275 (7.9)		2,569 (9.3)	20 (0.6)			222 (13.4)	317 (9.2)	1,058 (6.4)	126 (6.3)	117 (5.7)	748 (14.2)
845 - 845	2,589 (8.4)	1,314 (8.9)	1,275 (7.9)		2,569 (9.3)	20 (0.6)			222 (13.4)	317 (9.2)	1,058 (6.4)	126 (6.3)	117 (5.7)	748 (14.2)
846 - 846	2,589 (8.4)	1,314 (8.9)	1,275 (7.9)		2,569 (9.3)	20 (0.6)			222 (13.4)	317 (9.2)	1,058 (6.4)	126 (6.3)	117 (5.7)	748 (14.2)
847 - 847	2,589 (8.4)	1,314 (8.9)	1,275 (7.9)		2,569 (9.3)	20 (0.6)			222 (13.4)	317 (9.2)	1,058 (6.4)	126 (6.3)	117 (5.7)	748 (14.2)
848 - 848	2,589 (8.4)	1,314 (8.9)	1,275 (7.9)		2,569 (9.3)	20 (0.6)			222 (13.4)	317 (9.2)	1,058 (6.4)	126 (6.3)	117 (5.7)	748 (14.2)

849	-	849	2,589 (8.4)	1,314 (8.9)	1,275 (7.9)		2,569 (9.3)	20 (0.6)			222 (13.4)	317 (9.2)	1,058 (6.4)	126 (6.3)	117 (5.7)	748 (14.2)
850	-	850	4,710 (15.2)	2,494 (16.9)	2,216 (13.7)		4,555 (16.5)	155 (4.7)			439 (26.6)	627 (18.1)	1,457 (8.8)	388 (19.3)	204 (10.0)	1,594 (30.3)
851	-	851	4,710 (15.2)	2,494 (16.9)	2,216 (13.7)		4,555 (16.5)	155 (4.7)			439 (26.6)	627 (18.1)	1,457 (8.8)	388 (19.3)	204 (10.0)	1,594 (30.3)
852		852	4,710 (15.2)	2,494 (16.9)	2,216 (13.7)		4,555 (16.5)	155 (4.7)			439 (26.6)	627 (18.1)	1,457 (8.8)	388 (19.3)	204 (10.0)	1,594 (30.3)
853		853	4,710 (15.2)	2,494 (16.9)	2,216 (13.7)		4,555 (16.5)	155 (4.7)			439 (26.6)	627 (18.1)	1,457 (8.8)	388 (19.3)	204 (10.0)	1,594 (30.3)
854		854	4,710 (15.2)	2,494 (16.9)	2,216 (13.7)		4,555 (16.5)	155 (4.7)			439 (26.6)	627 (18.1)	1,457 (8.8)	388 (19.3)	204 (10.0)	1,594 (30.3)
855		855	4,749 (15.3)	2,494 (16.9)	2,255 (13.9)		4,594 (16.6)	155 (4.7)			439 (26.6)	627 (18.1)	1,457 (8.8)	388 (19.3)	242 (11.9)	1,594 (30.3)
856		856	4,749 (15.3)	2,494 (16.9)	2,255 (13.9)		4,594 (16.6)	155 (4.7)			439 (26.6)	627 (18.1)	1,457 (8.8)	388 (19.3)	242 (11.9)	1,594 (30.3)
857		857	4,840 (15.6)	2,494 (16.9)	2,346 (14.5)		4,685 (16.9)	155 (4.7)			439 (26.6)	627 (18.1)	1,457 (8.8)	388 (19.3)	334 (16.3)	1,594 (30.3)
858		858	4,840 (15.6)	2,494 (16.9)	2,346 (14.5)		4,685 (16.9)	155 (4.7)			439 (26.6)	627 (18.1)	1,457 (8.8)	388 (19.3)	334 (16.3)	1,594 (30.3)
859		859	5,014 (16.2)	2,668 (18.1)	2,346 (14.5)		4,860 (17.6)	155 (4.7)			527 (31.8)	670 (19.4)	1,501 (9.1)	388 (19.3)	334 (16.3)	1,594 (30.3)
860		860	5,313 (17.2)	2,668 (18.1)	2,645 (16.3)		5,119 (18.5)	194 (5.9)			728 (44.0)	670 (19.4)	1,501 (9.1)	388 (19.3)	334 (16.3)	1,692 (32.1)
861		861	5,313 (17.2)	2,668 (18.1)	2,645 (16.3)		5,119 (18.5)	194 (5.9)			728 (44.0)	670 (19.4)	1,501 (9.1)	388 (19.3)	334 (16.3)	1,692 (32.1)
862		862	5,313 (17.2)	2,668 (18.1)	2,645 (16.3)		5,119 (18.5)	194 (5.9)			728 (44.0)	670 (19.4)	1,501 (9.1)	388 (19.3)	334 (16.3)	1,692 (32.1)
863		863	5,357 (17.3)	2,712 (18.4)	2,645 (16.3)		5,163 (18.7)	194 (5.9)			728 (44.0)	670 (19.4)	1,544 (9.3)	388 (19.3)	334 (16.3)	1,692 (32.1)
864		864	5,357 (17.3)	2,712 (18.4)	2,645 (16.3)		5,163 (18.7)	194 (5.9)			728 (44.0)	670 (19.4)	1,544 (9.3)	388 (19.3)	334 (16.3)	1,692 (32.1)
865		865	5,395 (17.4)	2,712 (18.4)	2,683 (16.5)		5,201 (18.8)	194 (5.9)			728 (44.0)	670 (19.4)	1,583 (9.6)	388 (19.3)	334 (16.3)	1,692 (32.1)
866		866	5,395 (17.4)	2,712 (18.4)	2,683 (16.5)		5,201 (18.8)	194 (5.9)			728 (44.0)	670 (19.4)	1,583 (9.6)	388 (19.3)	334 (16.3)	1,692 (32.1)
867		867	5,395 (17.4)	2,712 (18.4)	2,683 (16.5)		5,201 (18.8)	194 (5.9)			728 (44.0)	670 (19.4)	1,583 (9.6)	388 (19.3)	334 (16.3)	1,692 (32.1)
868		868	5,395 (17.4)	2,712 (18.4)	2,683 (16.5)		5,201 (18.8)	194 (5.9)			728 (44.0)	670 (19.4)	1,583 (9.6)	388 (19.3)	334 (16.3)	1,692 (32.1)
869		869	5,395 (17.4)	2,712 (18.4)	2,683 (16.5)		5,201 (18.8)	194 (5.9)			728 (44.0)	670 (19.4)	1,583 (9.6)	388 (19.3)	334 (16.3)	1,692 (32.1)
870		870	5,816 (18.8)	2,892 (19.6)	2,923 (18.0)		5,509 (19.9)	306 (9.3)			949 (57.4)	689 (19.9)	1,670 (10.1)	388 (19.3)	334 (16.3)	1,829 (34.7)
871		871	5,859 (18.9)	2,936 (19.9)	2,923 (18.0)		5,553 (20.1)	306 (9.3)			949 (57.4)	689 (19.9)	1,670 (10.1)	388 (19.3)	334 (16.3)	1,829 (34.7)
872		872	5,859 (18.9)	2,936 (19.9)	2,923 (18.0)		5,553 (20.1)	306 (9.3)			949 (57.4)	689 (19.9)	1,670 (10.1)	388 (19.3)	334 (16.3)	1,829 (34.7)
873		873	5,859 (18.9)	2,936 (19.9)	2,923 (18.0)		5,553 (20.1)	306 (9.3)			949 (57.4)	689 (19.9)	1,670 (10.1)	388 (19.3)	334 (16.3)	1,829 (34.7)
874		874	5,859 (18.9)	2,936 (19.9)	2,923 (18.0)		5,553 (20.1)	306 (9.3)			949 (57.4)	689 (19.9)	1,670 (10.1)	388 (19.3)	334 (16.3)	1,829 (34.7)
875		875	5,859 (18.9)	2,936 (19.9)	2,923 (18.0)		5,553 (20.1)	306 (9.3)			949 (57.4)	689 (19.9)	1,670 (10.1)	388 (19.3)	334 (16.3)	1,829 (34.7)
876		876	5,859 (18.9)	2,936 (19.9)	2,923 (18.0)		5,553 (20.1)	306 (9.3)			949 (57.4)	689 (19.9)	1,670 (10.1)	388 (19.3)	334 (16.3)	1,829 (34.7)
877		877	5,859 (18.9)	2,936 (19.9)	2,923 (18.0)		5,553 (20.1)	306 (9.3)			949 (57.4)	689 (19.9)	1,670 (10.1)	388 (19.3)	334 (16.3)	1,829 (34.7)
878		878	5,859 (18.9)	2,936 (19.9)	2,923 (18.0)		5,553 (20.1)	306 (9.3)			949 (57.4)	689 (19.9)	1,670 (10.1)	388 (19.3)	334 (16.3)	1,829 (34.7)

879	879	5,859 (18.9)	2,936 (19.9)	2,923 (18.0)		5,553 (20.1)	306 (9.3)			949 (57.4)	689 (19.9)	1,670 (10.1)	388 (19.3)	334 (16.3)	1,829 (34.7)
880	880	6,272 (20.2)	3,212 (21.8)	3,059 (18.8)		5,887 (21.3)	385 (11.7)			988 (59.7)	733 (21.2)	1,752 (10.6)	388 (19.3)	372 (18.2)	2,038 (38.7)
881	881	6,272 (20.2)	3,212 (21.8)	3,059 (18.8)		5,887 (21.3)	385 (11.7)			988 (59.7)	733 (21.2)	1,752 (10.6)	388 (19.3)	372 (18.2)	2,038 (38.7)
882	882	6,272 (20.2)	3,212 (21.8)	3,059 (18.8)		5,887 (21.3)	385 (11.7)			988 (59.7)	733 (21.2)	1,752 (10.6)	388 (19.3)	372 (18.2)	2,038 (38.7)
883	883	6,290 (20.3)	3,212 (21.8)	3,078 (19.0)		5,887 (21.3)	403 (12.2)			988 (59.7)	733 (21.2)	1,752 (10.6)	388 (19.3)	372 (18.2)	2,057 (39.0)
884	889	6,382 (20.6)	3,212 (21.8)	3,169 (19.5)		5,978 (21.6)	403 (12.2)			988 (59.7)	733 (21.2)	1,844 (11.2)	388 (19.3)	372 (18.2)	2,057 (39.0)
890	899	6,906 (22.3)	3,256 (22.1)	3,650 (22.5)		6,502 (23.5)	403 (12.2)			988 (59.7)	733 (21.2)	2,070 (12.5)	427 (21.2)	502 (24.6)	2,187 (41.5)
900	909	11,745 (37.9)	4,357 (29.6)	7,389 (45.5)		11,284 (40.8)	461 (14.0)			1,261 (76.2)	2,272 (65.6)	4,209 (25.5)	485 (24.1)	810 (39.6)	2,707 (51.4)
910	919	12,663 (40.9)	4,794 (32.5)	7,869 (48.5)		11,808 (42.7)	855 (25.9)			1,261 (76.2)	2,272 (65.6)	4,829 (29.2)	485 (24.1)	810 (39.6)	3,005 (57.0)
920	929	13,715 (44.3)	5,404 (36.7)	8,311 (51.2)		12,860 (46.5)	855 (25.9)			1,261 (76.2)	2,272 (65.6)	5,317 (32.2)	529 (26.3)	1,124 (55.0)	3,212 (61.0)
930	939	14,027 (45.3)	5,716 (38.8)	8,311 (51.2)		13,079 (47.3)	948 (28.8)			1,349 (81.6)	2,272 (65.6)	5,360 (32.4)	529 (26.3)	1,167 (57.1)	3,350 (63.6)
940	949	14,365 (46.4)	5,760 (39.1)	8,606 (53.0)		13,397 (48.4)	969 (29.4)			1,349 (81.6)	2,272 (65.6)	5,587 (33.8)	620 (30.8)	1,167 (57.1)	3,370 (64.0)
950	959	15,775 (50.9)	6,545 (44.4)	9,230 (56.9)		14,729 (53.2)	1,046 (31.7)			1,393 (84.2)	2,493 (72.0)	6,537 (39.5)	664 (33.0)	1,211 (59.2)	3,478 (66.0)
960	969	16,747 (54.1)	7,423 (50.3)	9,324 (57.5)		15,514 (56.1)	1,233 (37.4)			1,654 (100.0)	2,729 (78.8)	6,830 (41.3)	707 (35.2)	1,211 (59.2)	3,615 (68.6)
970	979	17,376 (56.1)	7,903 (53.6)	9,474 (58.4)		16,085 (58.1)	1,291 (39.2)				2,923 (84.4)	7,246 (43.8)	707 (35.2)	1,231 (60.2)	3,615 (68.6)
980	989	17,748 (57.3)	8,034 (54.5)	9,714 (59.9)		16,399 (59.2)	1,349 (40.9)				2,985 (86.2)	7,491 (45.3)	751 (37.4)	1,231 (60.2)	3,635 (69.0)
990	999	18,164 (58.6)	8,208 (55.7)	9,956 (61.3)		16,664 (60.2)	1,500 (45.5)				3,004 (86.8)	7,797 (47.2)	842 (41.9)	1,231 (60.2)	3,635 (69.0)
1000	1099	23,718 (76.6)	11,239 (76.2)	12,480 (76.9)		21,471 (77.6)	2,248 (68.2)				3,307 (95.5)	11,519 (69.7)	1,244 (61.9)	1,494 (73.1)	4,500 (85.4)
1100	1199	26,046 (84.1)	12,536 (85.0)	13,509 (83.2)		23,391 (84.5)	2,655 (80.6)				3,418 (98.7)	13,180 (79.7)	1,358 (67.6)	1,687 (82.5)	4,748 (90.1)
1200	1299	26,848 (86.7)	12,896 (87.5)	13,951 (86.0)		23,983 (86.7)	2,864 (86.9)				3,418 (98.7)	13,693 (82.8)	1,459 (72.6)	1,687 (82.5)	4,936 (93.7)
1300	1399	27,556 (89.0)	13,091 (88.8)	14,465 (89.1)		24,672 (89.1)	2,883 (87.5)				3,418 (98.7)	14,228 (86.0)	1,632 (81.2)	1,687 (82.5)	4,936 (93.7)
1400	1499	28,193 (91.0)	13,271 (90.0)	14,922 (91.9)		25,216 (91.1)	2,977 (90.3)				3,418 (98.7)	14,730 (89.1)	1,632 (81.2)	1,778 (87.0)	4,980 (94.5)
1500		30,973 (100.0)	14,743 (100.0)	16,230 (100.0)		27,678 (100.0)	3,295 (100.0)				3,462 (100.0)	16,534 (100.0)	2,010 (100.0)	2,044 (100.0)	5,269 (100.0)
月平均賃金額		104,273	108,656	100,291		104,594	101,571			36,614	47,733	114,789	171,701	135,076	92,001
時間当平均賃金額		1,090	1,138	1,047		1,091	1,085			879	1,288	1,095	1,213	1,057	979
月一人当たり労働時間数		91	95	88		91	90			41	38	97	137	122	93
第1・20分位数		835	835	835		835	860			835	835	835	833	840	835
第1・10分位数		850	850	850		850	880			840	850	871	850	855	840
第1・4分位数		900	900	900		900	910			850	900	900	920	900	850
中位数		950	962	923		950	1,000			870	900	1,000	1,000	923	900
四分位偏差係数		0.0901	0.0834	0.0928		0.0794	0.1079			0.0293	0.0336	0.1191	0.2056	0.1142	0.0837

【上段】 累積労働者数

【下段】 累積構成比

総括表（１）（産業・就業形態別の賃金額階級別、規模別、地域別、年齢別表）

03年

総括表（１）

産業：医療、福祉

就業形態：（全て）

産別適用除外含む全労働者

時間当り所定内賃金額 （３手当を除く）	合計	規模別			地域別			年齢別					
		1～9人	10～29人	30～99人	加賀	能登		17歳以下	18～19歳	20～54歳	55～59歳	60～64歳	65歳以上
計	23,137	8,778	14,359		19,391	3,746			104	14,301	2,685	1,904	4,143
円	402	287	115		274	127			34	237	61		69
-	822	(1.7)	(3.3)	(0.8)	(1.4)	(3.4)			(33.0)	(1.7)	(2.3)		(1.7)
823 -	823	402	287	115	274	127			34	237	61		69
		(1.7)	(3.3)	(0.8)	(1.4)	(3.4)			(33.0)	(1.7)	(2.3)		(1.7)
824 -	824	436	321	115	309	127			34	271	61		69
		(1.9)	(3.7)	(0.8)	(1.6)	(3.4)			(33.0)	(1.9)	(2.3)		(1.7)
825 -	825	436	321	115	309	127			34	271	61		69
		(1.9)	(3.7)	(0.8)	(1.6)	(3.4)			(33.0)	(1.9)	(2.3)		(1.7)
826 -	826	436	321	115	309	127			34	271	61		69
		(1.9)	(3.7)	(0.8)	(1.6)	(3.4)			(33.0)	(1.9)	(2.3)		(1.7)
827 -	827	436	321	115	309	127			34	271	61		69
		(1.9)	(3.7)	(0.8)	(1.6)	(3.4)			(33.0)	(1.9)	(2.3)		(1.7)
828 -	828	436	321	115	309	127			34	271	61		69
		(1.9)	(3.7)	(0.8)	(1.6)	(3.4)			(33.0)	(1.9)	(2.3)		(1.7)
829 -	829	436	321	115	309	127			34	271	61		69
		(1.9)	(3.7)	(0.8)	(1.6)	(3.4)			(33.0)	(1.9)	(2.3)		(1.7)
830 -	830	436	321	115	309	127			34	271	61		69
		(1.9)	(3.7)	(0.8)	(1.6)	(3.4)			(33.0)	(1.9)	(2.3)		(1.7)
831 -	831	436	321	115	309	127			34	271	61		69
		(1.9)	(3.7)	(0.8)	(1.6)	(3.4)			(33.0)	(1.9)	(2.3)		(1.7)
832 -	832	436	321	115	309	127			34	271	61		69
		(1.9)	(3.7)	(0.8)	(1.6)	(3.4)			(33.0)	(1.9)	(2.3)		(1.7)
833 -	833	451	321	130	309	143			34	271	61		85
		(1.9)	(3.7)	(0.9)	(1.6)	(3.8)			(33.0)	(1.9)	(2.3)		(2.0)
834 -	834	451	321	130	309	143			34	271	61		85
		(1.9)	(3.7)	(0.9)	(1.6)	(3.8)			(33.0)	(1.9)	(2.3)		(2.0)
835 -	835	485	355	130	343	143			34	305	61		85
		(2.1)	(4.0)	(0.9)	(1.8)	(3.8)			(33.0)	(2.1)	(2.3)		(2.0)
836 -	836	485	355	130	343	143			34	305	61		85
		(2.1)	(4.0)	(0.9)	(1.8)	(3.8)			(33.0)	(2.1)	(2.3)		(2.0)
837 -	837	485	355	130	343	143			34	305	61		85
		(2.1)	(4.0)	(0.9)	(1.8)	(3.8)			(33.0)	(2.1)	(2.3)		(2.0)
838 -	838	485	355	130	343	143			34	305	61		85
		(2.1)	(4.0)	(0.9)	(1.8)	(3.8)			(33.0)	(2.1)	(2.3)		(2.0)
839 -	839	485	355	130	343	143			34	305	61		85
		(2.1)	(4.0)	(0.9)	(1.8)	(3.8)			(33.0)	(2.1)	(2.3)		(2.0)
840 -	840	669	389	280	481	188			34	339	77		219
		(2.9)	(4.4)	(1.9)	(2.5)	(5.0)			(33.0)	(2.4)	(2.9)		(5.3)
841 -	841	669	389	280	481	188			34	339	77		219
		(2.9)	(4.4)	(1.9)	(2.5)	(5.0)			(33.0)	(2.4)	(2.9)		(5.3)
842 -	842	669	389	280	481	188			34	339	77		219
		(2.9)	(4.4)	(1.9)	(2.5)	(5.0)			(33.0)	(2.4)	(2.9)		(5.3)
843 -	843	669	389	280	481	188			34	339	77		219
		(2.9)	(4.4)	(1.9)	(2.5)	(5.0)			(33.0)	(2.4)	(2.9)		(5.3)
844 -	844	669	389	280	481	188			34	339	77		219
		(2.9)	(4.4)	(1.9)	(2.5)	(5.0)			(33.0)	(2.4)	(2.9)		(5.3)
845 -	845	704	389	314	516	188			34	339	77		254
		(3.0)	(4.4)	(2.2)	(2.7)	(5.0)			(33.0)	(2.4)	(2.9)		(6.1)
846 -	846	704	389	314	516	188			34	339	77		254
		(3.0)	(4.4)	(2.2)	(2.7)	(5.0)			(33.0)	(2.4)	(2.9)		(6.1)
847 -	847	704	389	314	516	188			34	339	77		254
		(3.0)	(4.4)	(2.2)	(2.7)	(5.0)			(33.0)	(2.4)	(2.9)		(6.1)
848 -	848	704	389	314	516	188			34	339	77		254
		(3.0)	(4.4)	(2.2)	(2.7)	(5.0)			(33.0)	(2.4)	(2.9)		(6.1)

849	-	849	704 (3.0)	389 (4.4)	314 (2.2)		516 (2.7)	188 (5.0)				34 (33.0)	339 (2.4)	77 (2.9)		254 (6.1)
850	-	850	1,184 (5.1)	785 (8.9)	399 (2.8)		790 (4.1)	394 (10.5)				34 (33.0)	504 (3.5)	165 (6.2)	55 (2.9)	427 (10.3)
851	-	851	1,219 (5.3)	819 (9.3)	399 (2.8)		824 (4.3)	394 (10.5)				34 (33.0)	538 (3.8)	165 (6.2)	55 (2.9)	427 (10.3)
852		852	1,219 (5.3)	819 (9.3)	399 (2.8)		824 (4.3)	394 (10.5)				34 (33.0)	538 (3.8)	165 (6.2)	55 (2.9)	427 (10.3)
853		853	1,219 (5.3)	819 (9.3)	399 (2.8)		824 (4.3)	394 (10.5)				34 (33.0)	538 (3.8)	165 (6.2)	55 (2.9)	427 (10.3)
854		854	1,219 (5.3)	819 (9.3)	399 (2.8)		824 (4.3)	394 (10.5)				34 (33.0)	538 (3.8)	165 (6.2)	55 (2.9)	427 (10.3)
855		855	1,219 (5.3)	819 (9.3)	399 (2.8)		824 (4.3)	394 (10.5)				34 (33.0)	538 (3.8)	165 (6.2)	55 (2.9)	427 (10.3)
856		856	1,219 (5.3)	819 (9.3)	399 (2.8)		824 (4.3)	394 (10.5)				34 (33.0)	538 (3.8)	165 (6.2)	55 (2.9)	427 (10.3)
857		857	1,219 (5.3)	819 (9.3)	399 (2.8)		824 (4.3)	394 (10.5)				34 (33.0)	538 (3.8)	165 (6.2)	55 (2.9)	427 (10.3)
858		858	1,219 (5.3)	819 (9.3)	399 (2.8)		824 (4.3)	394 (10.5)				34 (33.0)	538 (3.8)	165 (6.2)	55 (2.9)	427 (10.3)
859		859	1,219 (5.3)	819 (9.3)	399 (2.8)		824 (4.3)	394 (10.5)				34 (33.0)	538 (3.8)	165 (6.2)	55 (2.9)	427 (10.3)
860		860	1,253 (5.4)	854 (9.7)	399 (2.8)		859 (4.4)	394 (10.5)				34 (33.0)	538 (3.8)	200 (7.4)	55 (2.9)	427 (10.3)
861		861	1,253 (5.4)	854 (9.7)	399 (2.8)		859 (4.4)	394 (10.5)				34 (33.0)	538 (3.8)	200 (7.4)	55 (2.9)	427 (10.3)
862		862	1,253 (5.4)	854 (9.7)	399 (2.8)		859 (4.4)	394 (10.5)				34 (33.0)	538 (3.8)	200 (7.4)	55 (2.9)	427 (10.3)
863		863	1,253 (5.4)	854 (9.7)	399 (2.8)		859 (4.4)	394 (10.5)				34 (33.0)	538 (3.8)	200 (7.4)	55 (2.9)	427 (10.3)
864		864	1,253 (5.4)	854 (9.7)	399 (2.8)		859 (4.4)	394 (10.5)				34 (33.0)	538 (3.8)	200 (7.4)	55 (2.9)	427 (10.3)
865		865	1,253 (5.4)	854 (9.7)	399 (2.8)		859 (4.4)	394 (10.5)				34 (33.0)	538 (3.8)	200 (7.4)	55 (2.9)	427 (10.3)
866		866	1,253 (5.4)	854 (9.7)	399 (2.8)		859 (4.4)	394 (10.5)				34 (33.0)	538 (3.8)	200 (7.4)	55 (2.9)	427 (10.3)
867		867	1,287 (5.6)	888 (10.1)	399 (2.8)		893 (4.6)	394 (10.5)				34 (33.0)	572 (4.0)	200 (7.4)	55 (2.9)	427 (10.3)
868		868	1,322 (5.7)	888 (10.1)	434 (3.0)		927 (4.8)	394 (10.5)				34 (33.0)	607 (4.2)	200 (7.4)	55 (2.9)	427 (10.3)
869		869	1,356 (5.9)	888 (10.1)	469 (3.3)		962 (5.0)	394 (10.5)				34 (33.0)	641 (4.5)	200 (7.4)	55 (2.9)	427 (10.3)
870		870	1,452 (6.3)	983 (11.2)	469 (3.3)		1,030 (5.3)	421 (11.3)				34 (33.0)	641 (4.5)	200 (7.4)	116 (6.1)	461 (11.1)
871		871	1,452 (6.3)	983 (11.2)	469 (3.3)		1,030 (5.3)	421 (11.3)				34 (33.0)	641 (4.5)	200 (7.4)	116 (6.1)	461 (11.1)
872		872	1,486 (6.4)	1,018 (11.6)	469 (3.3)		1,065 (5.5)	421 (11.3)				34 (33.0)	676 (4.7)	200 (7.4)	116 (6.1)	461 (11.1)
873		873	1,486 (6.4)	1,018 (11.6)	469 (3.3)		1,065 (5.5)	421 (11.3)				34 (33.0)	676 (4.7)	200 (7.4)	116 (6.1)	461 (11.1)
874		874	1,486 (6.4)	1,018 (11.6)	469 (3.3)		1,065 (5.5)	421 (11.3)				34 (33.0)	676 (4.7)	200 (7.4)	116 (6.1)	461 (11.1)
875		875	1,486 (6.4)	1,018 (11.6)	469 (3.3)		1,065 (5.5)	421 (11.3)				34 (33.0)	676 (4.7)	200 (7.4)	116 (6.1)	461 (11.1)
876		876	1,521 (6.6)	1,018 (11.6)	503 (3.5)		1,099 (5.7)	421 (11.3)				34 (33.0)	710 (5.0)	200 (7.4)	116 (6.1)	461 (11.1)
877		877	1,521 (6.6)	1,018 (11.6)	503 (3.5)		1,099 (5.7)	421 (11.3)				34 (33.0)	710 (5.0)	200 (7.4)	116 (6.1)	461 (11.1)
878		878	1,521 (6.6)	1,018 (11.6)	503 (3.5)		1,099 (5.7)	421 (11.3)				34 (33.0)	710 (5.0)	200 (7.4)	116 (6.1)	461 (11.1)

879	879	1,556 (6.7)	1,018 (11.6)	538 (3.7)		1,134 (5.8)	421 (11.3)				34 (33.0)	710 (5.0)	200 (7.4)	116 (6.1)	495 (12.0)
880	880	1,763 (7.6)	1,052 (12.0)	712 (5.0)		1,342 (6.9)	421 (11.3)				34 (33.0)	745 (5.2)	234 (8.7)	151 (7.9)	600 (14.5)
881	881	1,763 (7.6)	1,052 (12.0)	712 (5.0)		1,342 (6.9)	421 (11.3)				34 (33.0)	745 (5.2)	234 (8.7)	151 (7.9)	600 (14.5)
882	882	1,763 (7.6)	1,052 (12.0)	712 (5.0)		1,342 (6.9)	421 (11.3)				34 (33.0)	745 (5.2)	234 (8.7)	151 (7.9)	600 (14.5)
883	883	1,763 (7.6)	1,052 (12.0)	712 (5.0)		1,342 (6.9)	421 (11.3)				34 (33.0)	745 (5.2)	234 (8.7)	151 (7.9)	600 (14.5)
884	889	1,813 (7.8)	1,052 (12.0)	761 (5.3)		1,377 (7.1)	437 (11.7)				34 (33.0)	794 (5.6)	234 (8.7)	151 (7.9)	600 (14.5)
890	899	1,897 (8.2)	1,086 (12.4)	811 (5.7)		1,445 (7.5)	452 (12.1)				34 (33.0)	829 (5.8)	234 (8.7)	151 (7.9)	650 (15.7)
900	909	2,839 (12.3)	1,496 (17.0)	1,343 (9.4)		2,341 (12.1)	497 (13.3)				34 (33.0)	1,255 (8.8)	303 (11.3)	250 (13.2)	996 (24.0)
910	919	3,362 (14.5)	1,557 (17.7)	1,805 (12.6)		2,792 (14.4)	570 (15.2)				34 (33.0)	1,471 (10.3)	303 (11.3)	285 (15.0)	1,269 (30.6)
920	929	3,497 (15.1)	1,557 (17.7)	1,939 (13.5)		2,896 (14.9)	600 (16.0)				34 (33.0)	1,521 (10.6)	303 (11.3)	285 (15.0)	1,354 (32.7)
930	939	3,818 (16.5)	1,660 (18.9)	2,159 (15.0)		3,172 (16.4)	646 (17.2)				34 (33.0)	1,639 (11.5)	338 (12.6)	354 (18.6)	1,453 (35.1)
940	949	4,056 (17.5)	1,728 (19.7)	2,328 (16.2)		3,380 (17.4)	676 (18.1)				34 (33.0)	1,777 (12.4)	338 (12.6)	403 (21.2)	1,503 (36.3)
950	959	4,551 (19.7)	2,104 (24.0)	2,447 (17.0)		3,860 (19.9)	691 (18.5)				34 (33.0)	1,948 (13.6)	407 (15.1)	472 (24.8)	1,690 (40.8)
960	969	5,096 (22.0)	2,241 (25.5)	2,855 (19.9)		4,343 (22.4)	752 (20.1)				34 (33.0)	2,274 (15.9)	441 (16.4)	487 (25.6)	1,859 (44.9)
970	979	5,245 (22.7)	2,241 (25.5)	3,005 (20.9)		4,448 (22.9)	798 (21.3)				34 (33.0)	2,378 (16.6)	441 (16.4)	518 (27.2)	1,874 (45.2)
980	989	5,557 (24.0)	2,364 (26.9)	3,193 (22.2)		4,689 (24.2)	867 (23.2)				34 (33.0)	2,558 (17.9)	476 (17.7)	545 (28.6)	1,943 (46.9)
990	999	5,829 (25.2)	2,432 (27.7)	3,397 (23.7)		4,931 (25.4)	898 (24.0)				34 (33.0)	2,746 (19.2)	511 (19.0)	545 (28.6)	1,993 (48.1)
1000	1099	9,398 (40.6)	3,587 (40.9)	5,812 (40.5)		8,003 (41.3)	1,395 (37.2)				104 (100.0)	4,793 (33.5)	851 (31.7)	1,122 (58.9)	2,529 (61.1)
1100	1199	11,956 (51.7)	4,680 (53.3)	7,276 (50.7)		10,242 (52.8)	1,714 (45.8)					6,416 (44.9)	1,211 (45.1)	1,324 (69.6)	2,901 (70.0)
1200	1299	14,796 (63.9)	5,786 (65.9)	9,009 (62.7)		12,727 (65.6)	2,069 (55.2)					8,557 (59.8)	1,399 (52.1)	1,505 (79.0)	3,232 (78.0)
1300	1399	17,335 (74.9)	6,620 (75.4)	10,715 (74.6)		14,972 (77.2)	2,363 (63.1)					10,213 (71.4)	1,860 (69.3)	1,685 (88.5)	3,473 (83.8)
1400	1499	18,595 (80.4)	7,023 (80.0)	11,571 (80.6)		16,007 (82.5)	2,588 (69.1)					10,970 (76.7)	2,062 (76.8)	1,735 (91.1)	3,724 (89.9)
1500		23,137 (100.0)	8,778 (100.0)	14,359 (100.0)		19,391 (100.0)	3,746 (100.0)					14,301 (100.0)	2,685 (100.0)	1,904 (100.0)	4,143 (100.0)
月平均賃金額		180,414	181,582	179,699		175,969	203,421				97,012	198,117	197,362	162,395	118,682
時間当平均賃金額		1,303	1,357	1,271		1,272	1,465				932	1,350	1,335	1,172	1,192
月一人当たり労働時間数		138	139	137		138	139				109	149	145	134	97
第1・20分位数		850	850	887		870	840				774	880	850	870	840
第1・10分位数		900	867	910		900	850				774	917	903	909	850
第1・4分位数		999	966	1,000		994	1,000				774	1,034	1,045	968	910
中位数		1,169	1,166	1,171		1,164	1,250				1,000	1,227	1,277	1,052	1,000
四分位偏差係数		0.1716	0.1779	0.1711		0.1645	0.2467				0.1231	0.1777	0.1743	0.1341	0.1705

【上段】 累積労働者数

【下段】 累積構成比

総括表（１）（産業・就業形態別の賃金額階級別、規模別、地域別、年齢別表）

03年

総括表（１）

産業：サービス業

就業形態：（全て）

産別適用除外含む全労働者

時間当り所定内賃金額 （3手当を除く）	合計	規模別			地域別				年齢別					
		1～9人	10～29人	30～99人	加賀	能登			17歳以下	18～19歳	20～54歳	55～59歳	60～64歳	65歳以上
計	30,455	18,163	12,292		26,908	3,547				567	20,634	2,220	2,874	4,161
円	510	510			297	213				48	142		65	255
-	822	(1.7)	(2.8)		(1.1)	(6.0)				(8.5)	(0.7)		(2.3)	(6.1)
823 -	823	510	510		297	213				48	142		65	255
		(1.7)	(2.8)		(1.1)	(6.0)				(8.5)	(0.7)		(2.3)	(6.1)
824 -	824	510	510		297	213				48	142		65	255
		(1.7)	(2.8)		(1.1)	(6.0)				(8.5)	(0.7)		(2.3)	(6.1)
825 -	825	510	510		297	213				48	142		65	255
		(1.7)	(2.8)		(1.1)	(6.0)				(8.5)	(0.7)		(2.3)	(6.1)
826 -	826	510	510		297	213				48	142		65	255
		(1.7)	(2.8)		(1.1)	(6.0)				(8.5)	(0.7)		(2.3)	(6.1)
827 -	827	510	510		297	213				48	142		65	255
		(1.7)	(2.8)		(1.1)	(6.0)				(8.5)	(0.7)		(2.3)	(6.1)
828 -	828	510	510		297	213				48	142		65	255
		(1.7)	(2.8)		(1.1)	(6.0)				(8.5)	(0.7)		(2.3)	(6.1)
829 -	829	510	510		297	213				48	142		65	255
		(1.7)	(2.8)		(1.1)	(6.0)				(8.5)	(0.7)		(2.3)	(6.1)
830 -	830	510	510		297	213				48	142		65	255
		(1.7)	(2.8)		(1.1)	(6.0)				(8.5)	(0.7)		(2.3)	(6.1)
831 -	831	510	510		297	213				48	142		65	255
		(1.7)	(2.8)		(1.1)	(6.0)				(8.5)	(0.7)		(2.3)	(6.1)
832 -	832	581	581		297	283				48	212		65	255
		(1.9)	(3.2)		(1.1)	(8.0)				(8.5)	(1.0)		(2.3)	(6.1)
833 -	833	874	874		333	541				48	258	35	88	444
		(2.9)	(4.8)		(1.2)	(15.3)				(8.5)	(1.3)	(1.6)	(3.1)	(10.7)
834 -	834	874	874		333	541				48	258	35	88	444
		(2.9)	(4.8)		(1.2)	(15.3)				(8.5)	(1.3)	(1.6)	(3.1)	(10.7)
835 -	835	916	916		375	541				48	258	35	88	486
		(3.0)	(5.0)		(1.4)	(15.3)				(8.5)	(1.3)	(1.6)	(3.1)	(11.7)
836 -	836	916	916		375	541				48	258	35	88	486
		(3.0)	(5.0)		(1.4)	(15.3)				(8.5)	(1.3)	(1.6)	(3.1)	(11.7)
837 -	837	916	916		375	541				48	258	35	88	486
		(3.0)	(5.0)		(1.4)	(15.3)				(8.5)	(1.3)	(1.6)	(3.1)	(11.7)
838 -	838	916	916		375	541				48	258	35	88	486
		(3.0)	(5.0)		(1.4)	(15.3)				(8.5)	(1.3)	(1.6)	(3.1)	(11.7)
839 -	839	916	916		375	541				48	258	35	88	486
		(3.0)	(5.0)		(1.4)	(15.3)				(8.5)	(1.3)	(1.6)	(3.1)	(11.7)
840 -	840	984	952	32	442	541				48	258	35	155	486
		(3.2)	(5.2)	(0.3)	(1.6)	(15.3)				(8.5)	(1.3)	(1.6)	(5.4)	(11.7)
841 -	841	984	952	32	442	541				48	258	35	155	486
		(3.2)	(5.2)	(0.3)	(1.6)	(15.3)				(8.5)	(1.3)	(1.6)	(5.4)	(11.7)
842 -	842	1,026	994	32	484	541				48	258	35	155	529
		(3.4)	(5.5)	(0.3)	(1.8)	(15.3)				(8.5)	(1.3)	(1.6)	(5.4)	(12.7)
843 -	843	1,026	994	32	484	541				48	258	35	155	529
		(3.4)	(5.5)	(0.3)	(1.8)	(15.3)				(8.5)	(1.3)	(1.6)	(5.4)	(12.7)
844 -	844	1,026	994	32	484	541				48	258	35	155	529
		(3.4)	(5.5)	(0.3)	(1.8)	(15.3)				(8.5)	(1.3)	(1.6)	(5.4)	(12.7)
845 -	845	1,049	1,017	32	484	564				48	258	35	178	529
		(3.4)	(5.6)	(0.3)	(1.8)	(15.9)				(8.5)	(1.3)	(1.6)	(6.2)	(12.7)
846 -	846	1,049	1,017	32	484	564				48	258	35	178	529
		(3.4)	(5.6)	(0.3)	(1.8)	(15.9)				(8.5)	(1.3)	(1.6)	(6.2)	(12.7)
847 -	847	1,049	1,017	32	484	564				48	258	35	178	529
		(3.4)	(5.6)	(0.3)	(1.8)	(15.9)				(8.5)	(1.3)	(1.6)	(6.2)	(12.7)
848 -	848	1,049	1,017	32	484	564				48	258	35	178	529
		(3.4)	(5.6)	(0.3)	(1.8)	(15.9)				(8.5)	(1.3)	(1.6)	(6.2)	(12.7)

849	-	849	1,049 (3.4)	1,017 (5.6)	32 (0.3)		484 (1.8)	564 (15.9)				48 (8.5)	258 (1.3)	35 (1.6)	178 (6.2)	529 (12.7)
850	-	850	1,985 (6.5)	1,314 (7.2)	671 (5.5)		1,421 (5.3)	564 (15.9)				90 (15.9)	776 (3.8)	103 (4.6)	242 (8.4)	773 (18.6)
851	-	851	1,985 (6.5)	1,314 (7.2)	671 (5.5)		1,421 (5.3)	564 (15.9)				90 (15.9)	776 (3.8)	103 (4.6)	242 (8.4)	773 (18.6)
852		852	1,985 (6.5)	1,314 (7.2)	671 (5.5)		1,421 (5.3)	564 (15.9)				90 (15.9)	776 (3.8)	103 (4.6)	242 (8.4)	773 (18.6)
853		853	1,985 (6.5)	1,314 (7.2)	671 (5.5)		1,421 (5.3)	564 (15.9)				90 (15.9)	776 (3.8)	103 (4.6)	242 (8.4)	773 (18.6)
854		854	1,985 (6.5)	1,314 (7.2)	671 (5.5)		1,421 (5.3)	564 (15.9)				90 (15.9)	776 (3.8)	103 (4.6)	242 (8.4)	773 (18.6)
855		855	1,985 (6.5)	1,314 (7.2)	671 (5.5)		1,421 (5.3)	564 (15.9)				90 (15.9)	776 (3.8)	103 (4.6)	242 (8.4)	773 (18.6)
856		856	1,985 (6.5)	1,314 (7.2)	671 (5.5)		1,421 (5.3)	564 (15.9)				90 (15.9)	776 (3.8)	103 (4.6)	242 (8.4)	773 (18.6)
857		857	2,008 (6.6)	1,337 (7.4)	671 (5.5)		1,421 (5.3)	587 (16.5)				90 (15.9)	799 (3.9)	103 (4.6)	242 (8.4)	773 (18.6)
858		858	2,008 (6.6)	1,337 (7.4)	671 (5.5)		1,421 (5.3)	587 (16.5)				90 (15.9)	799 (3.9)	103 (4.6)	242 (8.4)	773 (18.6)
859		859	2,050 (6.7)	1,379 (7.6)	671 (5.5)		1,463 (5.4)	587 (16.5)				90 (15.9)	841 (4.1)	103 (4.6)	242 (8.4)	773 (18.6)
860		860	2,568 (8.4)	1,877 (10.3)	691 (5.6)		1,961 (7.3)	607 (17.1)				90 (15.9)	841 (4.1)	103 (4.6)	511 (17.8)	1,022 (24.6)
861		861	2,610 (8.6)	1,919 (10.6)	691 (5.6)		2,003 (7.4)	607 (17.1)				90 (15.9)	883 (4.3)	103 (4.6)	511 (17.8)	1,022 (24.6)
862		862	2,610 (8.6)	1,919 (10.6)	691 (5.6)		2,003 (7.4)	607 (17.1)				90 (15.9)	883 (4.3)	103 (4.6)	511 (17.8)	1,022 (24.6)
863		863	2,913 (9.6)	1,919 (10.6)	994 (8.1)		2,306 (8.6)	607 (17.1)				90 (15.9)	1,187 (5.8)	103 (4.6)	511 (17.8)	1,022 (24.6)
864		864	2,913 (9.6)	1,919 (10.6)	994 (8.1)		2,306 (8.6)	607 (17.1)				90 (15.9)	1,187 (5.8)	103 (4.6)	511 (17.8)	1,022 (24.6)
865		865	2,913 (9.6)	1,919 (10.6)	994 (8.1)		2,306 (8.6)	607 (17.1)				90 (15.9)	1,187 (5.8)	103 (4.6)	511 (17.8)	1,022 (24.6)
866		866	2,913 (9.6)	1,919 (10.6)	994 (8.1)		2,306 (8.6)	607 (17.1)				90 (15.9)	1,187 (5.8)	103 (4.6)	511 (17.8)	1,022 (24.6)
867		867	2,913 (9.6)	1,919 (10.6)	994 (8.1)		2,306 (8.6)	607 (17.1)				90 (15.9)	1,187 (5.8)	103 (4.6)	511 (17.8)	1,022 (24.6)
868		868	2,913 (9.6)	1,919 (10.6)	994 (8.1)		2,306 (8.6)	607 (17.1)				90 (15.9)	1,187 (5.8)	103 (4.6)	511 (17.8)	1,022 (24.6)
869		869	2,984 (9.8)	1,990 (11.0)	994 (8.1)		2,377 (8.8)	607 (17.1)				90 (15.9)	1,187 (5.8)	103 (4.6)	511 (17.8)	1,094 (26.3)
870		870	3,127 (10.3)	2,133 (11.7)	994 (8.1)		2,520 (9.4)	607 (17.1)				90 (15.9)	1,329 (6.4)	103 (4.6)	511 (17.8)	1,094 (26.3)
871		871	3,127 (10.3)	2,133 (11.7)	994 (8.1)		2,520 (9.4)	607 (17.1)				90 (15.9)	1,329 (6.4)	103 (4.6)	511 (17.8)	1,094 (26.3)
872		872	3,162 (10.4)	2,168 (11.9)	994 (8.1)		2,555 (9.5)	607 (17.1)				90 (15.9)	1,365 (6.6)	103 (4.6)	511 (17.8)	1,094 (26.3)
873		873	3,172 (10.4)	2,168 (11.9)	1,004 (8.2)		2,555 (9.5)	617 (17.4)				90 (15.9)	1,365 (6.6)	103 (4.6)	521 (18.1)	1,094 (26.3)
874		874	3,172 (10.4)	2,168 (11.9)	1,004 (8.2)		2,555 (9.5)	617 (17.4)				90 (15.9)	1,365 (6.6)	103 (4.6)	521 (18.1)	1,094 (26.3)
875		875	3,245 (10.7)	2,241 (12.3)	1,004 (8.2)		2,591 (9.6)	655 (18.5)				90 (15.9)	1,438 (7.0)	103 (4.6)	521 (18.1)	1,094 (26.3)
876		876	3,245 (10.7)	2,241 (12.3)	1,004 (8.2)		2,591 (9.6)	655 (18.5)				90 (15.9)	1,438 (7.0)	103 (4.6)	521 (18.1)	1,094 (26.3)
877		877	3,245 (10.7)	2,241 (12.3)	1,004 (8.2)		2,591 (9.6)	655 (18.5)				90 (15.9)	1,438 (7.0)	103 (4.6)	521 (18.1)	1,094 (26.3)
878		878	3,245 (10.7)	2,241 (12.3)	1,004 (8.2)		2,591 (9.6)	655 (18.5)				90 (15.9)	1,438 (7.0)	103 (4.6)	521 (18.1)	1,094 (26.3)

879	879	3,281 (10.8)	2,277 (12.5)	1,004 (8.2)		2,626 (9.8)	655 (18.5)				90 (15.9)	1,473 (7.1)	103 (4.6)	521 (18.1)	1,094 (26.3)
880	880	3,508 (11.5)	2,312 (12.7)	1,196 (9.7)		2,853 (10.6)	655 (18.5)				90 (15.9)	1,509 (7.3)	135 (6.1)	521 (18.1)	1,253 (30.1)
881	881	3,508 (11.5)	2,312 (12.7)	1,196 (9.7)		2,853 (10.6)	655 (18.5)				90 (15.9)	1,509 (7.3)	135 (6.1)	521 (18.1)	1,253 (30.1)
882	882	3,508 (11.5)	2,312 (12.7)	1,196 (9.7)		2,853 (10.6)	655 (18.5)				90 (15.9)	1,509 (7.3)	135 (6.1)	521 (18.1)	1,253 (30.1)
883	883	3,528 (11.6)	2,312 (12.7)	1,216 (9.9)		2,853 (10.6)	675 (19.0)				90 (15.9)	1,529 (7.4)	135 (6.1)	521 (18.1)	1,253 (30.1)
884	889	3,632 (11.9)	2,406 (13.2)	1,226 (10.0)		2,853 (10.6)	778 (21.9)				90 (15.9)	1,599 (7.8)	135 (6.1)	554 (19.3)	1,253 (30.1)
890	899	3,937 (12.9)	2,711 (14.9)	1,226 (10.0)		3,068 (11.4)	870 (24.5)				90 (15.9)	1,739 (8.4)	206 (9.3)	625 (21.7)	1,276 (30.7)
900	909	4,370 (14.3)	3,051 (16.8)	1,319 (10.7)		3,478 (12.9)	892 (25.2)				90 (15.9)	2,082 (10.1)	242 (10.9)	625 (21.7)	1,331 (32.0)
910	919	4,792 (15.7)	3,473 (19.1)	1,319 (10.7)		3,851 (14.3)	941 (26.5)				90 (15.9)	2,504 (12.1)	242 (10.9)	625 (21.7)	1,331 (32.0)
920	929	5,181 (17.0)	3,862 (21.3)	1,319 (10.7)		4,192 (15.6)	989 (27.9)				90 (15.9)	2,773 (13.4)	290 (13.1)	625 (21.7)	1,402 (33.7)
930	939	5,828 (19.1)	4,258 (23.4)	1,570 (12.8)		4,743 (17.6)	1,085 (30.6)				90 (15.9)	3,133 (15.2)	290 (13.1)	625 (21.7)	1,690 (40.6)
940	949	6,101 (20.0)	4,437 (24.4)	1,664 (13.5)		4,836 (18.0)	1,265 (35.7)				90 (15.9)	3,351 (16.2)	313 (14.1)	625 (21.7)	1,722 (41.4)
950	959	7,130 (23.4)	5,342 (29.4)	1,788 (14.5)		5,805 (21.6)	1,325 (37.3)				90 (15.9)	4,163 (20.2)	313 (14.1)	625 (21.7)	1,939 (46.6)
960	969	7,332 (24.1)	5,449 (30.0)	1,883 (15.3)		6,008 (22.3)	1,325 (37.3)				90 (15.9)	4,262 (20.7)	348 (15.7)	692 (24.1)	1,939 (46.6)
970	979	7,608 (25.0)	5,653 (31.1)	1,955 (15.9)		6,244 (23.2)	1,365 (38.5)				90 (15.9)	4,454 (21.6)	348 (15.7)	776 (27.0)	1,939 (46.6)
980	989	8,018 (26.3)	5,873 (32.3)	2,145 (17.5)		6,623 (24.6)	1,395 (39.3)				90 (15.9)	4,768 (23.1)	348 (15.7)	808 (28.1)	2,003 (48.1)
990	999	8,547 (28.1)	6,064 (33.4)	2,483 (20.2)		7,152 (26.6)	1,395 (39.3)				126 (22.2)	5,261 (25.5)	348 (15.7)	808 (28.1)	2,003 (48.1)
1000	1099	12,444 (40.9)	8,581 (47.2)	3,863 (31.4)		10,599 (39.4)	1,845 (52.0)				210 (37.1)	8,074 (39.1)	380 (17.1)	1,264 (44.0)	2,515 (60.5)
1100	1199	14,589 (47.9)	9,925 (54.6)	4,665 (37.9)		12,487 (46.4)	2,102 (59.3)				210 (37.1)	9,888 (47.9)	422 (19.0)	1,407 (49.0)	2,662 (64.0)
1200	1299	16,701 (54.8)	11,513 (63.4)	5,188 (42.2)		14,344 (53.3)	2,357 (66.5)				567 (100.0)	11,188 (54.2)	500 (22.5)	1,510 (52.5)	2,936 (70.6)
1300	1399	18,678 (61.3)	12,547 (69.1)	6,131 (49.9)		15,895 (59.1)	2,783 (78.5)					12,463 (60.4)	865 (39.0)	1,578 (54.9)	3,204 (77.0)
1400	1499	19,825 (65.1)	13,104 (72.1)	6,721 (54.7)		16,936 (62.9)	2,889 (81.4)					13,389 (64.9)	929 (41.8)	1,646 (57.3)	3,294 (79.2)
1500		30,455 (100.0)	18,163 (100.0)	12,292 (100.0)		26,908 (100.0)	3,547 (100.0)					20,634 (100.0)	2,220 (100.0)	2,874 (100.0)	4,161 (100.0)
月平均賃金額		208,996	185,480	243,743		211,984	186,325				188,396	219,392	270,699	204,619	130,350
時間当平均賃金額		1,399	1,284	1,569		1,427	1,191				1,126	1,417	1,748	1,451	1,127
月一人当たり労働時間数		145	140	152		144	152				167	152	151	133	113
第1・20分位数		850	835	850		850	795				795	863	880	840	750
第1・10分位数		870	860	900		880	833				850	909	900	860	833
第1・4分位数		980	950	1,012		990	900				1,060	995	1,307	970	869
中位数		1,226	1,126	1,406		1,238	1,065				1,226	1,226	1,593	1,212	1,000
四分位偏差係数		0.2678	0.2572	0.2907		0.2747	0.2143				0.0726	0.2741	0.2278	0.2878	0.2543

【上段】

累積労働者数

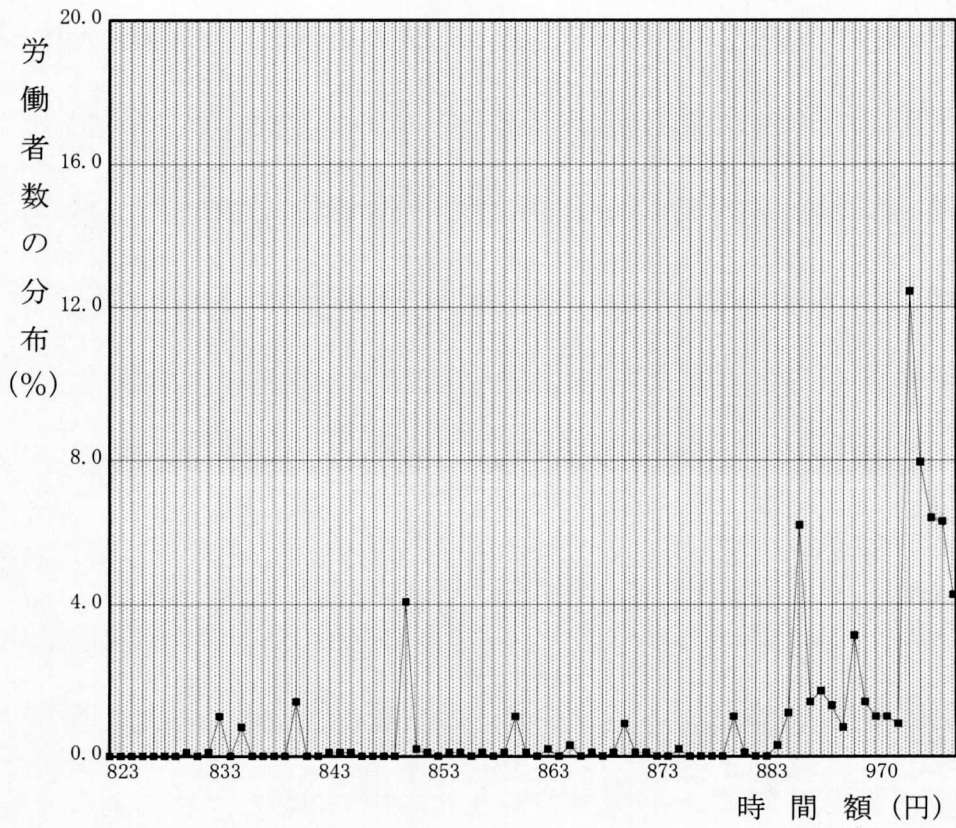
【下段】

累積構成比

最低賃金引上げ額・率と影響率の関係表

件名					
業種					
現行の最低賃金額	時間額	833円			
未満率	2.0%				
項番	時間額			影響率	未満労働者数
	引上げ額	引上げ率	引上げ後時間額		
1	0	0.00	833	2.03	3,596
2	1	0.12	834	3.11	5,515
3	2	0.24	835	3.11	5,515
4	3	0.36	836	3.95	7,003
5	4	0.48	837	3.95	7,003
6	5	0.60	838	3.95	7,003
7	6	0.72	839	3.97	7,038
8	7	0.84	840	3.97	7,043
9	8	0.96	841	5.47	9,696
10	9	1.08	842	5.50	9,756
11	10	1.20	843	5.55	9,837
12	11	1.32	844	5.61	9,945
13	12	1.44	845	5.73	10,157
14	13	1.56	846	5.82	10,311
15	14	1.68	847	5.82	10,311
16	15	1.80	848	5.82	10,311
17	16	1.92	849	5.83	10,334
18	17	2.04	850	5.83	10,334
19	18	2.16	851	10.07	17,845
20	19	2.28	852	10.25	18,180
21	20	2.40	853	10.39	18,418
22	21	2.52	854	10.39	18,418
23	22	2.64	855	10.52	18,648
24	23	2.76	856	10.63	18,844
25	24	2.88	857	10.63	18,844
26	25	3.00	858	10.74	19,049
27	26	3.12	859	10.77	19,099
28	27	3.24	860	10.90	19,333
29	28	3.36	861	11.98	21,244
30	29	3.48	862	12.05	21,363
31	30	3.60	863	12.05	21,363

時間額に対するその該当労働者数の分布



時間額に対するその該当労働者数の累積度数分布

