

令和4年度最低賃金に関する基礎調査結果

1	最低賃金に関する基礎調査	．．．．．	P 1
2	最低賃金に関する基礎調査の対象産業表～地域別最低賃金対象～		P 4
3	集計結果（母集団数・必要数・標準誤差・集計数）	．．．．．	P 5
4	地域別最低賃金の規模別、地域別の特性値一覧		
	・地域別最低賃金適用全産業	．．．．．	P 6
	・地域別最低賃金適用製造業	．．．．．	P 7
	・地域別最低賃金適用卸小売業	．．．．．	P 8
	・地域別最低賃金適用サービス業的業種	．．．．．	P 9
5	特性値・未満率・影響率とは	．．．．．	P 10
6	地域別最低賃金の特性値等の推移	．．．．．	P 11
7	地域別最低賃金の特性値の地域間格差	．．．．．	P 12
8	総括表		
	・地域別最低賃金適用全産業	総括表 1（規模別・地域別・年齢別）	P 13
		総括表 2（男女別）	P 17
		関係表	P 21
		分布グラフ	P 23
	・地域別最低賃金適用製造業	総括表 1（規模・地域別・年齢）	P 25
		総括表 2（男女別）	P 29
	・地域別最低賃金適用卸小売業	総括表 1（規模・地域別・年齢）	P 33
		総括表 2（男女別）	P 37
	・地域別最低賃金適用サービス業的業種		
		総括表 1（規模・地域別・年齢）	P 41

総括表 2 (男女別) P45

最低賃金に関する基礎調査

I 調査目的

都道府県労働局における最低賃金審議会の最低賃金の決定又は改正のための審議資料に資するため、地域、産業、事業所規模、性、年齢階級、勤続年数、職種別に労働者の賃金分布を把握することによって、特に低賃金労働者の賃金実態を明らかにすることを目的に、統計法に基づく一般統計調査として実施するもの。

II 調査の範囲

1 産業

日本標準産業分類に定める産業のうち、次に掲げる産業とする。

- ア 製造業
- イ 情報通信業のうち新聞業、出版業
- ウ 卸売業、小売業
- エ 学術研究、専門・技術サービス業
- オ 宿泊業、飲食サービス業
- カ 生活関連サービス、娯楽業
- キ 医療、福祉
- ク サービス業（他に分類されないもの）

2 事業所

- ア 製造業及び情報通信業のうち新聞業、出版業
100人未満の常用労働者を雇用する民営事業所
- イ 卸売業、小売業、学術研究、専門・技術サービス業、宿泊業、飲食サービス業、生活関連サービス、娯楽業、医療、福祉、サービス業（他に分類されないもの）
30人未満の常用労働者を雇用する民営事業所

3 労働者

当年6月1日において、2に掲げる事業所に雇用される労働者

4 調査事項

次に掲げる事項

(1) 事業所に関する事項

- ア 主な生産品の名称又は事業の内容
- イ 事業所の労働者数

(2) 労働者に関する事項

- ア 性
- イ 就業形態
- ウ 年齢
- エ 勤続年数
- オ 職種又は仕事の内容
- カ 当年6月分の賃金形態
- キ 当年6月分の基本給額（見込額）
- ク 当年6月分の精皆勤手当、通勤手当、家族手当及びその他の手当（各見込額）
- ケ 当年6月分の月間所定労働日数
- コ 当年6月分の1日の所定労働時間数

5 兵庫局における調査

兵庫県最低賃金（地域最賃のみで特定最賃が適用されない業種）については、同最賃適用製造業、同最賃適用卸売小売業、同最賃適用サービス業を対象にしている。

特定最賃については、設定されている7件に係る業種を対象にしている。

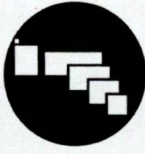
令和4年度は、兵庫県最賃・特定最賃を合わせて、2,827事業所に調査票を送付している（兵庫県最賃：1,239事業所、特定最賃：1,588事業所）。

集計は、規模別に2又は3分類（製造業1～9人、10人～29人、30人～99人の3つ、卸小売、サービス業関係は1～9人、10人～29人の2つ）、地域別に3分類（阪神、播磨、県北・淡路）している。

最低賃金に関する実態調査

最低賃金に関する基礎調査票

(令和4年6月)



政府統計

この調査票に記入された事項については、統計以外の目的に使ったり、他に漏らしたりすることはありません。

(記入上の注意)

- 1. ※欄は記入しないでください。
2. 令和4年6月1日現在(ただし、2の(8)~(10)については実績ではなく、令和4年6月分の見込み)の状況を記入してください。
3. 記入にあたっては、黒又は青のボールペンを使って、(太線)の中について記入してください。
イ. 数字はすべて1, 2, 3,の算用数字を使ってください。
ロ. ○で囲む場合は、いずれか1つの数字を①のように○で囲んでください。
(注1) 労働者には以下の者を除きます。ただし、ロ又はハの者でも、一般の労働者と同一ように勤務し、同じ給与規則によって給与を受けている場合は労働者に含まれます。
イ. 事業主、社長 ロ. 理事、取締役などの役員 ハ. 家族従業員
(注2) 2の(3)について、例えば土曜日など1日の所定労働時間の半分だけ働く場合は0.5日と数えてください。

Address and contact information fields including prefecture, city, and telephone number.

Main form for business information, including company name, industry, and contact details.

1. 事業所に関する事項 (注)

Table with columns for gender (男, 女) and count (計), for employees (人) and total (人).

2. 労働者に関する事項

上記1の労働者全員について記入してください。ただし、労働者数が30人以上の事業所では、労働者名簿などから、特定の職種等の労働者にかたよらないように、1人おきに選んで、記入してください。

Main data table with columns for employee ID, gender, age, tenure, job type, and monthly wages (basic, commuting, family, etc.).

(注) 2枚目以降については、「1. 事業所に関する事項」欄は記入する必要はありません。

最低賃金に関する基礎調査の対象産業表

～地域別最低賃金対象～

総計 調査 産業 計	地域 最低 賃金 対象 産業	中計 O1 年齢、業務による除外労働者	明細 1 産業別最低賃金適用除外労働者	
		O2 地域最賃適用製造業	2 E-製造業	E-製造業から、特定最低賃金適用業種を除いたもの ※特定最低賃金適用業種 E1644 E22 E25、E26、E27(但しE273、E274、E275、E276は除く) E28、E29(但し心電計製造業を除いたE2973は除く)、E30 E312、E313、E314、E315、E319(但しE3191は除く) E273(但しE2738は除く)
		O3 地域最賃適用卸売小売業	4 I-卸売業、小売業	I-卸売業、小売業から、特定最低賃金適用業種を除いたもの ※特定最低賃金適用業種 I591(但しI5914(原付を含む)を除く)
		O4 地域最賃適用サービス業等	3 G-情報通信業のうち新聞業(G413)、出版業(G414)	G413、G414
			5 L-学術研究、専門・技術サービス業	L71、L72、L73、L74、
			6 M-宿泊業、飲食サービス業	M75、M76、M77
			7 N-生活関連サービス業、娯楽業	N78、N79、N80
			8 P-医療、福祉	P83、P84、P85
			9 R-サービス業(他に分類されないもの)	R88、R89、R90、R91、R92、R93、R94、R95

集計結果

区 分	母集団 労働者数	必要 労働者数	標準誤差 (設計値)	集計 労働者数	標準誤差 (結果)
兵庫県最低賃金	705245	5065	0.7%	4196	0.7%

※ 「母集団労働者数」は、利用可能な最新の事業所母集団データベースを基にしている。

「必要労働者数」は、母集団労働者数から、標準誤差率が0.7%となるように、算出したもの。

「集計労働者数」はデータ処理数

「標準誤差」は、無作為標本調査による推計結果値が真の値からどのくらい離れているかの幅を示す数値であり、目標制度の基準は「影響率」とし、推計値の前後にそれぞれ標準誤差の2倍の値をとると、真の値は約95%の確率でこの幅の中にあるといえる。

上記数値は、設計値、結果ともに、影響率50%の場合の数値となっている。

規模・地域別最低賃金の特性値(地域別最低賃金適用全産業)

集計区分		年度	第1・二十分位数			第1・十分位数			第1・四分位数			中位数		
全数		4	930	△ 30	△ 3.3 %	930	△ 30	△ 3.3 %	970	△ 15	△ 1.6 %	1,200	△ 50	△ 4.3 %
		3	900	△ 0	△ 0.0 %	900	△ 0	△ 0.0 %	955	△ 5	△ 0.5 %	1,150	△ 3	△ 0.3 %
		2	900	△ 29	△ 3.3 %	900	△ 20	△ 2.3 %	950	△ 20	△ 2.2 %	1,147	△ 43	△ 3.9 %
規模別	1~9人	4	930	△ 30	△ 3.3 %	930	△ 30	△ 3.3 %	989	△ 39	△ 4.1 %	1,200	△ 100	△ 9.1 %
		3	900	△ 1	△ 0.1 %	900	△ 0	△ 0.0 %	950	△ 0	△ 0.0 %	1,100	▲ 28	▲ 2.5 %
		2	899	△ 28	△ 3.2 %	900	△ 20	△ 2.3 %	950	△ 22	△ 2.4 %	1,128	△ 41	△ 3.8 %
	10~29人	4	930	△ 30	△ 3.3 %	930	△ 30	△ 3.3 %	957	△ 2	△ 0.2 %	1,165	△ 40	△ 3.6 %
		3	900	△ 0	△ 0.0 %	900	△ 0	△ 0.0 %	955	△ 0	△ 0.0 %	1,125	▲ 18	▲ 1.6 %
		2	900	△ 29	△ 3.3 %	900	△ 18	△ 2.0 %	955	△ 25	△ 2.7 %	1,143	△ 53	△ 4.9 %
	30~99人	4	947	△ 17	△ 1.8 %	957	▲ 78	▲ 7.5 %	1,060	▲ 180	▲ 14.5 %	1,351	▲ 106	▲ 7.3 %
		3	930	△ 31	△ 3.4 %	1,035	△ 135	△ 15.0 %	1,240	△ 290	△ 30.5 %	1,457	△ 255	△ 21.2 %
		2	899	△ 28	△ 3.2 %	900	△ 25	△ 2.9 %	950	△ 10	△ 1.1 %	1,202	▲ 58	▲ 4.6 %
地域別	阪神地区 (含明石)	4	930	△ 30	△ 3.3 %	930	△ 30	△ 3.3 %	976	△ 9	△ 0.9 %	1,225	△ 89	△ 7.8 %
		3	900	△ 0	△ 0.0 %	900	△ 0	△ 0.0 %	967	▲ 3	▲ 0.3 %	1,136	▲ 40	▲ 3.4 %
		2	900	△ 25	△ 2.9 %	900	△ 20	△ 2.3 %	970	△ 20	△ 2.1 %	1,176	△ 40	△ 3.5 %
	播磨地区 (除明石)	4	928	△ 28	△ 3.1 %	930	△ 30	△ 3.3 %	960	△ 20	△ 2.1 %	1,162	△ 20	△ 1.8 %
		3	900	△ 0	△ 0.0 %	900	△ 0	△ 0.0 %	940	△ 8	△ 0.9 %	1,142	△ 42	△ 3.8 %
		2	900	△ 29	△ 3.3 %	900	△ 25	△ 2.9 %	932	△ 32	△ 3.6 %	1,100	△ 23	△ 2.1 %
	県北・淡路地区	4	930	△ 30	△ 3.3 %	930	△ 30	△ 3.3 %	970	▲ 30	▲ 3.0 %	1,144	▲ 99	▲ 8.0 %
		3	900	△ 1	△ 0.1 %	900	△ 0	△ 0.0 %	1000	△ 50	△ 5.3 %	1,243	△ 102	△ 8.9 %
		2	899	△ 28	△ 3.2 %	900	△ 29	△ 3.3 %	950	△ 50	△ 5.6 %	1,141	△ 46	△ 4.2 %

※ 特性値の欄の、上段、中段及び下段はそれぞれ最低賃金に関する基礎調査の令和4年、3年及び2年の数値を示す。
 また、左から金額、前年対比増減金額、対前年増減率を示す。
 なお、各数値で△は前年対比増、▲は前年対比減を示す。

規模・地域別最低賃金の特性値(地域別最低賃金適用製造業)

集計区分		年度	第1・二十分位数			第1・十分位数			第1・四分位数			中位数		
全数		4	930	△ 30	△ 3.3 %	950	△ 20	△ 2.2 %	1,010	▲ 94	▲ 8.5 %	1,337	▲ 69	▲ 4.9 %
		3	900	△ 0	△ 0.0 %	930	△ 30	△ 3.3 %	1,104	△ 144	△ 15.0 %	1,406	△ 174	△ 14.1 %
		2	900	△ 29	△ 3.3 %	900	△ 25	△ 2.9 %	960	△ 31	△ 3.3 %	1,232	△ 16	△ 1.3 %
規模別	1~9人	4	928	△ 28	△ 3.1 %	930	△ 30	△ 3.3 %	969	▲ 17	▲ 1.7 %	1,272	△ 22	△ 1.8 %
		3	900	△ 0	△ 0.0 %	900	△ 0	△ 0.0 %	986	△ 29	△ 3.0 %	1,250	△ 0	△ 0.0 %
		2	900	△ 29	△ 3.3 %	900	△ 29	△ 3.3 %	957	△ 40	△ 4.4 %	1,250	△ 73	△ 6.2 %
	10~29人	4	930	△ 30	△ 3.3 %	950	△ 17	△ 1.8 %	1,030	△ 10	△ 1.0 %	1,339	△ 9	△ 0.7 %
		3	900	△ 0	△ 0.0 %	933	△ 33	△ 3.7 %	1,020	△ 28	△ 2.8 %	1,330	△ 44	△ 3.4 %
		2	900	△ 29	△ 3.3 %	900	△ 20	△ 2.3 %	992	△ 72	△ 7.8 %	1,286	△ 114	△ 9.7 %
	30~99人	4	947	△ 17	△ 1.8 %	957	▲ 78	▲ 7.5 %	1,060	▲ 180	▲ 14.5 %	1,351	▲ 106	▲ 7.3 %
		3	930	△ 31	△ 3.4 %	1,035	△ 135	△ 15.0 %	1,240	△ 290	△ 30.5 %	1,457	△ 255	△ 21.2 %
		2	899	△ 28	△ 3.2 %	900	△ 25	△ 2.9 %	950	△ 10	△ 1.1 %	1,202	▲ 58	▲ 4.6 %
地域別	阪神地区(含 明石)	4	947	△ 14	△ 1.5 %	1,000	△ 15	△ 1.5 %	1,218	▲ 12	▲ 1.0 %	1,517	△ 19	△ 1.3 %
		3	933	△ 33	△ 3.7 %	985	△ 65	△ 7.1 %	1,230	△ 180	△ 17.1 %	1,498	△ 44	△ 3.0 %
		2	900	△ 25	△ 2.9 %	920	△ 30	△ 3.4 %	1,050	△ 50	△ 5.0 %	1,454	△ 125	△ 9.4 %
	播磨地区(除 明石)	4	930	△ 30	△ 3.3 %	950	△ 30	△ 3.3 %	970	▲ 82	▲ 7.8 %	1,248	▲ 49	▲ 3.8 %
		3	900	△ 1	△ 0.1 %	920	△ 20	△ 2.2 %	1,052	△ 132	△ 14.3 %	1,297	△ 182	△ 16.3 %
		2	899	△ 28	△ 3.2 %	900	△ 29	△ 3.3 %	920	△ 20	△ 2.2 %	1,115	▲ 39	▲ 3.4 %
	県北・淡路地区	4	928	△ 28	△ 3.1 %	930	△ 20	△ 2.2 %	950	▲ 100	▲ 9.5 %	1,111	▲ 388	▲ 25.9 %
		3	900	△ 1	△ 0.1 %	910	△ 11	△ 1.2 %	1,050	#####	#DIV/0!	1,499	△ 317	△ 26.8 %
		2	899	△ 32	△ 3.7 %	899	△ 28	△ 3.2 %		△ 50	△ 5.6 %	1,182	△ 84	△ 7.7 %

※ 特性値の欄の、上段、中段及び下段はそれぞれ最低賃金に関する基礎調査の令和4年、3年及び2年の数値を示す。
 また、左から金額、前年対比増減金額、対前年増減率を示す。
 なお、各数値で△は前年対比増、▲は前年対比減を示す。

規模・地域別最低賃金の特性値(地域別最低賃金適用卸小売業)

集計区分		年度	第1・二十分位数			第1・十分位数			第1・四分位数			中位数		
全数		4	928	△ 28	△ 3.1 %	930	△ 30	△ 3.3 %	950	△ 20	△ 2.2 %	1,200	△ 130	△ 12.1 %
		3	900	△ 1	△ 0.1 %	900	△ 0	△ 0.0 %	930	△ 14	△ 1.5 %	1,070	▲ 30	▲ 2.7 %
		2	899	△ 28	△ 3.2 %	900	△ 25	△ 2.9 %	916	▲ 4	▲ 0.4 %	1,100	△ 5	△ 0.5 %
規模別	1~9人	4	930	△ 30	△ 3.3 %	933	△ 33	△ 3.7 %	982	△ 57	△ 6.2 %	1,270	△ 187	△ 17.3 %
		3	900	△ 1	△ 0.1 %	900	△ 0	△ 0.0 %	925	▲ 15	▲ 1.6 %	1,083	▲ 85	▲ 7.3 %
		2	899	△ 78	△ 9.5 %	900	△ 22	△ 2.5 %	940	△ 0	△ 0.0 %	1,168	△ 113	△ 10.7 %
	10~29人	4	928	△ 28	△ 3.1 %	930	△ 30	△ 3.3 %	940	△ 10	△ 1.1 %	1,130	△ 65	△ 6.1 %
		3	900	△ 1	△ 0.1 %	900	△ 0	△ 0.0 %	930	△ 22	△ 2.4 %	1,065	▲ 15	▲ 1.4 %
		2	899	△ 28	△ 3.2 %	900	△ 26	△ 3.0 %	908	▲ 12	▲ 1.3 %	1,080	▲ 63	▲ 5.5 %
地域別	阪神地区(含 明石)	4	930	△ 30	△ 3.3 %	930	△ 30	△ 3.3 %	950	△ 10	△ 1.1 %	1,231	△ 111	△ 9.9 %
		3	900	△ 1	△ 0.1 %	900	△ 0	△ 0.0 %	940	△ 20	△ 2.2 %	1,120	△ 3	△ 0.3 %
		2	899	△ 24	△ 2.7 %	900	△ 0	△ 0.0 %	920	▲ 22	▲ 2.3 %	1,117	▲ 2	▲ 0.2 %
	播磨地区(除 明石)	4	928	△ 28	△ 3.1 %	928	△ 28	△ 3.1 %	948	△ 36	△ 3.9 %	1,139	△ 148	△ 14.9 %
		3	900	△ 0	△ 0.0 %	900	△ 0	△ 0.0 %	912	△ 7	△ 0.8 %	991	▲ 119	▲ 10.7 %
		2	900	△ 29	△ 3.3 %	900	△ 29	△ 3.3 %	905	△ 25	△ 2.8 %	1,110	△ 47	△ 4.4 %
	県北・淡路 地区	4	928	△ 28	△ 3.1 %	930	△ 30	△ 3.3 %	960	△ 35	△ 3.8 %	1,154	△ 79	△ 7.3 %
		3	900	△ 0	△ 0.0 %	900	△ 0	△ 0.0 %	925	△ 5	△ 0.5 %	1,075	△ 35	△ 3.4 %
		2	900	△ 29	△ 3.3 %	900	△ 29	△ 3.3 %	920	△ 20	△ 2.2 %	1,040	▲ 6	▲ 0.6 %

※ 特性値の欄の、上段、中段及び下段はそれぞれ最低賃金に関する基礎調査の令和4年、3年及び2年の数値を示す。
また、左から金額、前年対比増減金額、対前年増減率を示す。
なお、各数値で△は前年対比増、▲は前年対比減を示す。

規模・地域別最低賃金の特性値(地域別最低賃金適用サービス業的業種)

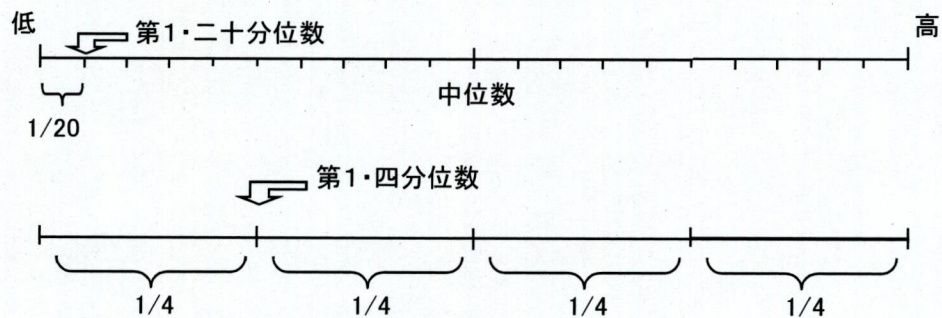
集計区分		年度	第1・二十分位数			第1・十分位数			第1・四分位数			中位数		
全数		4	930	△ 30	△ 3.3 %	930	△ 30	△ 3.3 %	970	△ 4	△ 0.4 %	1,155	△ 54	△ 4.9 %
		3	900	△ 0	△ 0.0 %	900	▲ 10	▲ 1.1 %	966	△ 6	△ 0.6 %	1,101	△ 1	△ 0.1 %
		2	900	△ 29	△ 3.3 %	910	△ 30	△ 3.4 %	960	△ 20	△ 2.1 %	1,100	△ 28	△ 2.6 %
規模別	1~9人	4	930	△ 30	△ 3.3 %	930	△ 30	△ 3.3 %	990	△ 39	△ 4.1 %	1,164	△ 70	△ 6.4 %
		3	900	△ 1	△ 0.1 %	900	△ 0	△ 0.0 %	951	△ 1	△ 0.1 %	1,094	△ 4	△ 0.4 %
		2	899	△ 28	△ 3.2 %	900	△ 20	△ 2.3 %	950	△ 24	△ 2.6 %	1,090	△ 4	△ 0.4 %
	10~29人	4	930	△ 30	△ 3.3 %	930	△ 25	△ 2.8 %	960	▲ 20	▲ 2.0 %	1,146	△ 32	△ 2.9 %
		3	900	△ 0	△ 0.0 %	905	▲ 25	▲ 2.7 %	980	△ 10	△ 1.0 %	1,114	△ 9	△ 0.8 %
		2	900	△ 25	△ 2.9 %	930	△ 40	△ 4.5 %	970	△ 30	△ 3.2 %	1,105	△ 71	△ 6.9 %
地域別	阪神地区(含 明石)	4	930	△ 30	△ 3.3 %	930	△ 30	△ 3.3 %	970	△ 0	△ 0.0 %	1,170	△ 70	△ 6.4 %
		3	900	△ 0	△ 0.0 %	900	▲ 10	▲ 1.1 %	970	△ 4	△ 0.4 %	1,100	▲ 5	▲ 0.5 %
		2	900	△ 25	△ 2.9 %	910	△ 30	△ 3.4 %	966	△ 17	△ 1.8 %	1,105	△ 25	△ 2.3 %
	播磨地区(除 明石)	4	930	△ 30	△ 3.3 %	930	△ 25	△ 2.8 %	960	△ 10	△ 1.1 %	1,114	△ 7	△ 0.6 %
		3	900	△ 0	△ 0.0 %	905	▲ 5	▲ 0.5 %	950	△ 0	△ 0.0 %	1,107	△ 7	△ 0.6 %
		2	900	△ 29	△ 3.3 %	910	△ 30	△ 3.4 %	950	△ 27	△ 2.9 %	1,100	△ 79	△ 7.7 %
	県北・淡路 地区	4	930	△ 30	△ 3.3 %	930	△ 30	△ 3.3 %	1,050	△ 50	△ 5.0 %	1,180	▲ 65	▲ 5.2 %
		3	900	△ 0	△ 0.0 %	900	▲ 15	▲ 1.6 %	1,000	△ 48	△ 5.0 %	1,245	△ 40	△ 3.3 %
		2	900	△ 29	△ 3.3 %	915	△ 36	△ 4.1 %	952	△ 52	△ 5.8 %	1,205	△ 105	△ 9.5 %

※ 特性値の欄の上段、中段及び下段はそれぞれ最低賃金に関する基礎調査の令和4年、3年及び2年の数値を示す。
また、左から金額、前年対比増減金額、対前年増減率を示す。
なお、各数値で△は前年対比増、▲は前年対比減を示す。

特性値・未満率・影響率とは

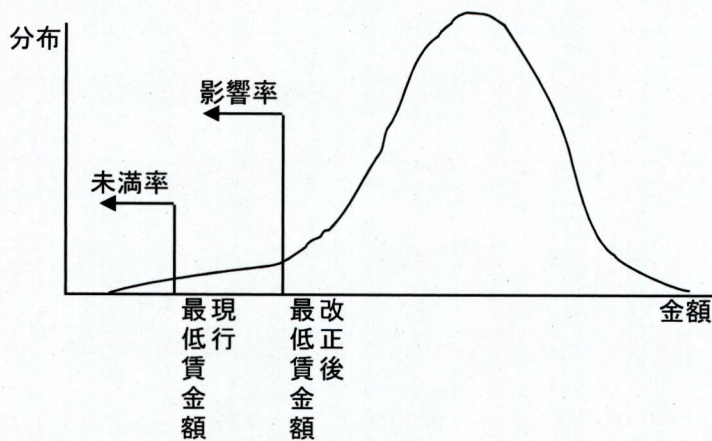
第1・二十分位数、第1・四分位数、中位数とは何か。

数値の集まり(分布)があるとき、数値を低いものから高いものへと順に並べて低い方からみて全体の20分の1の順位に当たる数値を当該分布の第1・二十分位数、同様に2分の1の順位(即ち中央)に当たる数値を当該分布の中位数、4分の1の順位に当たる数値を当該分布の第1・四分位数と呼び、それぞれの分布の特性を示す数値のことである。



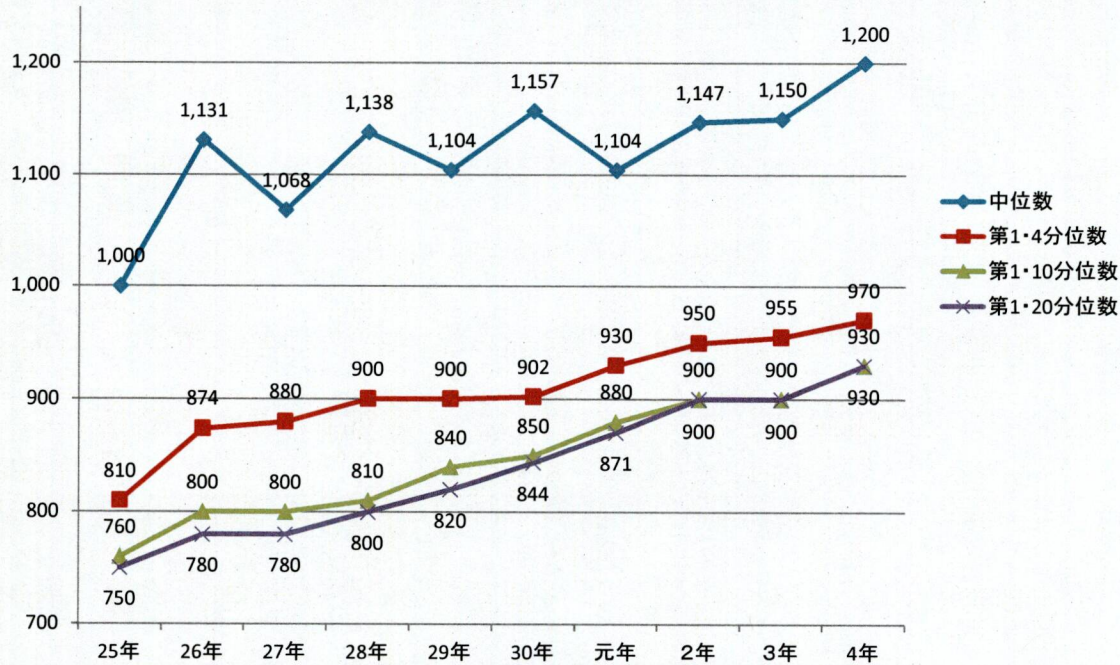
未満率、影響率とは何か。

未満率とは、現在設定されている最低賃金額を下回っている労働者の割合のことであり、影響率とは、最低賃金額を改定した場合、その改定後の最低賃金額を下回る労働者数の割合のことである。

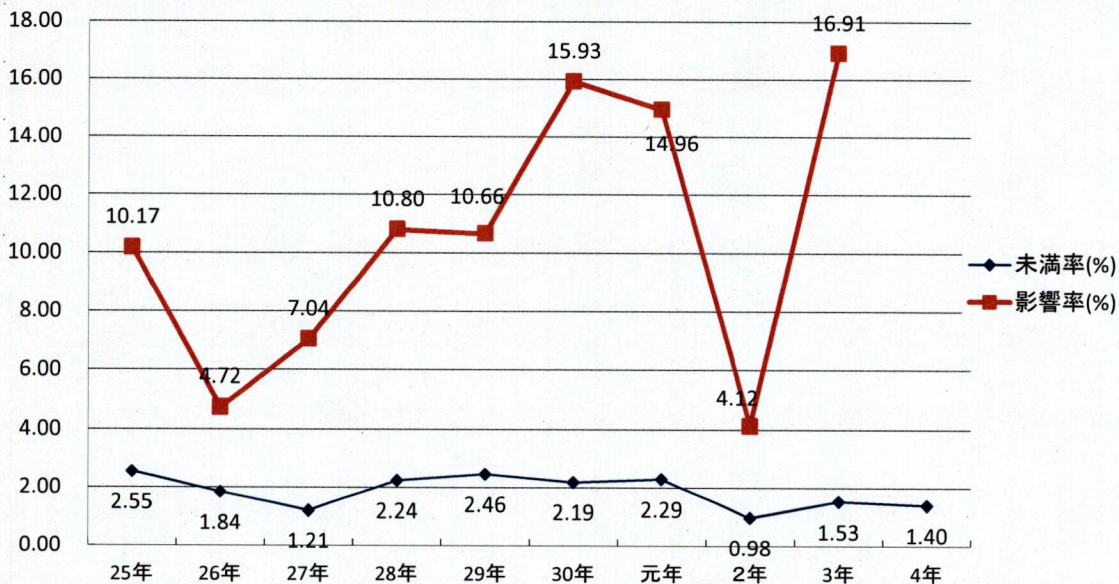


地域別最低賃金の特性値等の推移

	25年	26年	27年	28年	29年	30年	元年	2年	3年	4年
第1・20分位数	750	780	780	800	820	844	871	900	900	930
第1・10分位数	760	800	800	810	840	850	880	900	900	930
第1・4分位数	810	874	880	900	900	902	930	950	955	970
中位数	1,000	1,131	1,068	1,138	1,104	1,157	1,104	1,147	1,150	1,200



	25年	26年	27年	28年	29年	30年	元年	2年	3年	4年
未満率(%)	2.55	1.84	1.21	2.24	2.46	2.19	2.29	0.98	1.53	1.40
最賃時間額(円、改正前)	749	761	776	794	819	844	871	899	900	928
最賃時間額(円、改正後)	761	776	794	819	844	871	899	900	928	
引上げ額(円)	12	15	18	25	25	27	28	1	28	
影響率(%)	10.17	4.72	7.04	10.80	10.66	15.93	14.96	4.12	16.91	



地域別最低賃金の特性値の地域間格差

地域別最低賃金(円)		平成21年	平成22年	平成23年	平成24年	平成25年	平成26年	平成27年	平成28年	平成29年	平成30年	令和元年	令和2年	令和3年	令和4年
		721	734	739	749	761	776	794	819	844	871	899	900	928	
第1・二十分位数	県全体	744	740	750	750	750	780	780	800	820	844	871	900	900	930
	阪神	751	750	750	760	750	780	786	800	820	845	875	900	900	930
		100.0	100.0	100.0	100.0	100.0	100.0	100.0	100.0	100.0	100.0	100.0	100.0	100.0	100.0
	播磨	732	730	750	747	750	770	780	800	819	844	871	900	900	928
		97.5	97.3	100.0	98.3	100.0	98.7	99.2	100.0	99.9	99.9	99.5	100.0	100.0	99.8
	県北・淡路	736	730	735	739	749	763	779	794	819	844	871	899	900	930
98.0		97.3	98.0	97.2	99.9	97.8	99.1	99.3	99.9	99.9	99.5	99.9	100.0	100.0	
第1・十分位数	県全体	757	750	780	780	760	800	800	810	840	850	880	900	900	930
	阪神	764	780	800	800	780	800	807	820	850	859	880	900	900	930
		100.0	100.0	100.0	100.0	100.0	100.0	100.0	100.0	100.0	100.0	100.0	100.0	100.0	100.0
	播磨	753	742	759	750	750	800	800	807	825	850	875	900	900	930
		98.6	95.1	94.9	93.8	96.2	100.0	99.1	98.4	97.1	99.0	99.4	100.0	100.0	100.0
	県北・淡路	752	750	750	750	750	780	800	800	820	850	871	900	900	930
98.4		96.2	93.8	93.8	96.2	97.5	99.1	97.6	96.5	99.0	99.0	100.0	100.0	100.0	
第1・四分位数	県全体	810	820	850	842	810	874	880	900	900	902	930	950	955	970
	阪神	822	849	852	850	830	870	900	900	901	919	950	970	967	976
		100.0	100.0	100.0	100.0	100.0	100.0	100.0	100.0	100.0	100.0	100.0	100.0	100.0	100.0
	播磨	804	800	800	820	800	890	850	900	875	900	900	932	940	960
		97.8	94.2	93.9	96.5	96.4	102.3	94.4	100.0	97.1	97.9	94.7	96.1	97.2	98.4
	県北・淡路	808	800	820	800	800	857	850	850	886		900	950	1000	970
98.3		94.2	96.2	94.1	96.4	98.5	94.4	94.4	98.3	0.0	94.7	97.9	103.4	99.4	
中位数	県全体	993	1,000	1,014	1,034	1,000	1,131	1,068	1,138	1,104	1,157	1,104	1,147	1,150	1,200
	阪神	1,031	1,012	1,024	1,090	1,000	1,129	1,090	1,136	1,122	1,179	1,136	1,176	1,136	1,225
		100.0	100.0	100.0	100.0	100.0	100.0	100.0	100.0	100.0	100.0	100.0	100.0	100.0	100.0
	播磨	948	999	990	975	971	1,150	1,034	1,163	1,096	1,120	1,077	1,100	1,142	1,162
		91.9	98.7	96.7	89.4	97.1	101.9	94.9	102.4	97.7	95.0	94.8	93.5	100.5	94.9
	県北・淡路	914	970	1,026	954	1,000	1,090	1,042	1,051	1,035	1,131	1,095	1,141	1,243	1,144
88.7		95.8	100.2	87.5	100.0	96.5	95.6	92.5	92.2	95.9	96.4	97.0	109.4	93.4	

注) 各特性値欄に、県全体及び各地域の値を、また地域ごとに、上段及び下段にそれぞれ特性値及び指数(当該年の阪神地域の特性値を100とする)を示す。

計	規模別		地域別				年齢別						
	10~29人		30~99人		阪神	播磨	東北・淡路	17歳以下	18~19歳	20~54歳	55~59歳	60~64歳	65歳以上
	1~9人	10~29人	30~99人	合計									
917	7,340	1,626	54,088	390,918	190,283	58,700	4,460	17,978	431,294	60,751	50,611	74,806	
918	7,431	1,626		5,729	2,221	1,015		5,781	5,781	283	470	2,430	
919	7,431	1,626		5,821	2,221	1,015		5,781	5,781	283	470	2,522	
920	7,487	1,626		5,821	2,277	1,015		55	5,781	283	470	2,522	
921	7,609	1,626		5,821	2,399	1,015		55	5,781	283	470	2,644	
922	7,609	1,626		5,821	2,399	1,015		55	5,781	283	470	2,644	
923	7,609	1,626		5,821	2,399	1,015		55	5,781	283	470	2,644	
924	7,609	1,626		5,821	2,399	1,015		55	5,781	283	470	2,644	
925	7,609	1,626		5,821	2,399	1,015		55	5,781	283	470	2,644	
926	7,609	1,626		5,821	2,399	1,015		55	5,781	283	470	2,644	
927	7,609	1,626		5,821	2,399	1,015		55	5,781	283	470	2,644	
928	12,861	12,969	482	12,167	11,940	2,205	435	1,105	16,304	2,197	1,766	4,507	
929	12,861	12,969	482	12,167	11,940	2,205	435	1,105	16,304	2,197	1,766	4,507	
930	30,457	52,503	2,247	47,806	28,537	8,865	1,766	5,544	46,159	5,559	5,667	20,513	
931	32,005	52,503	2,247	49,231	28,659	8,865	1,766	5,544	46,159	5,559	5,667	22,060	
932	32,169	52,503	2,247	49,231	28,659	8,865	1,766	5,544	46,159	5,559	5,667	22,060	
933	32,464	52,989	2,247	49,717	28,954	9,029	1,766	5,544	46,939	5,559	5,831	22,060	
934	32,464	52,989	2,247	49,717	28,954	9,029	1,766	5,544	46,939	5,559	5,831	22,060	
935	32,777	53,151	2,247	50,192	28,954	9,029	1,766	5,544	47,101	5,716	5,988	22,060	
936	33,377	53,151	2,247	50,548	29,199	9,029	1,766	5,544	47,224	5,716	6,110	22,416	
937	33,552	53,370	2,247	50,548	29,418	9,203	1,766	5,544	47,618	5,716	6,110	22,416	
938	33,797	53,672	2,247	50,548	29,964	9,203	1,766	5,544	47,920	5,716	6,232	22,539	
939	33,797	53,672	2,247	50,548	29,964	9,203	1,766	5,544	47,920	5,716	6,232	22,539	
940	36,331	55,402	2,247	54,767	30,850	10,363	1,766	6,062	50,426	6,417	7,020	24,289	
941	39,017	55,493	2,247	55,370	31,023	10,363	1,766	6,062	50,846	6,417	7,376	24,289	

942	942	96,924	39,185	55,493	2,247	55,538	31,023	10,363	1,766	6,062	51,014	6,417	7,376	24,289
		(15.1)	(14.6)	(17.5)	(4.2)	(14.2)	(16.3)	(17.7)	(39.6)	(35.7)	(11.8)	(10.6)	(14.6)	(32.5)
943	943	97,108	39,368	55,493	2,247	55,721	31,023	10,363	1,766	6,062	51,197	6,417	7,376	24,289
		(15.2)	(14.6)	(17.5)	(4.2)	(14.3)	(16.3)	(17.7)	(39.6)	(35.7)	(11.9)	(10.6)	(14.6)	(32.5)
944	944	97,108	39,368	55,493	2,247	55,721	31,023	10,363	1,766	6,062	51,197	6,417	7,376	24,289
		(15.2)	(14.6)	(17.5)	(4.2)	(14.3)	(16.3)	(17.7)	(39.6)	(35.7)	(11.9)	(10.6)	(14.6)	(32.5)
945	945	98,991	40,171	56,573	2,247	56,825	31,803	10,363	1,876	6,418	51,903	6,417	7,596	24,782
		(15.5)	(14.9)	(17.9)	(4.2)	(14.5)	(16.7)	(17.7)	(42.0)	(35.7)	(12.0)	(10.6)	(15.0)	(33.1)
946	946	101,957	42,787	56,682	2,488	57,849	33,745	10,363	1,876	6,418	54,434	6,730	7,596	24,904
		(15.9)	(15.9)	(17.9)	(4.6)	(14.8)	(17.7)	(17.7)	(42.0)	(35.7)	(12.6)	(11.1)	(15.0)	(33.3)
947	947	104,452	44,799	56,682	2,971	60,344	33,745	10,363	1,876	6,418	54,434	7,018	7,739	26,967
		(16.3)	(16.6)	(17.9)	(5.5)	(15.4)	(17.7)	(17.7)	(42.0)	(35.7)	(12.6)	(11.6)	(15.3)	(36.0)
948	948	105,642	45,687	56,985	2,971	60,700	34,434	10,508	1,876	6,418	55,123	7,374	7,739	27,113
		(16.5)	(17.0)	(18.0)	(5.5)	(15.5)	(18.1)	(17.9)	(42.0)	(35.7)	(12.8)	(12.1)	(15.3)	(36.2)
949	949	105,642	45,687	56,985	2,971	60,700	34,434	10,508	1,876	6,418	55,123	7,374	7,739	27,113
		(16.5)	(17.0)	(18.0)	(5.5)	(15.5)	(18.1)	(17.9)	(42.0)	(35.7)	(12.8)	(12.1)	(15.3)	(36.2)
950	950	127,963	53,632	71,189	3,143	75,705	40,236	12,023	2,471	8,364	68,654	8,878	9,687	29,910
		(20.0)	(19.9)	(22.5)	(5.8)	(19.4)	(21.1)	(20.5)	(55.4)	(46.5)	(15.9)	(14.6)	(19.1)	(40.0)
951	951	128,578	53,632	71,803	3,143	76,319	40,236	12,023	2,471	8,886	68,747	8,878	9,687	29,910
		(20.1)	(19.9)	(22.7)	(5.8)	(19.5)	(21.1)	(20.5)	(55.4)	(48.4)	(15.9)	(14.6)	(19.1)	(40.0)
952	952	130,880	54,263	73,233	3,384	78,327	40,531	12,023	2,992	9,146	69,517	9,219	9,687	30,319
		(20.5)	(20.2)	(23.1)	(6.3)	(20.0)	(21.3)	(20.5)	(67.1)	(50.9)	(16.1)	(15.2)	(19.1)	(40.5)
953	953	132,461	54,263	74,125	4,073	79,109	41,329	12,023	2,992	9,407	70,492	9,219	9,860	30,491
		(20.7)	(20.2)	(23.4)	(7.5)	(20.2)	(21.7)	(20.5)	(67.1)	(52.3)	(16.3)	(15.2)	(19.5)	(40.8)
954	954	133,390	54,436	74,710	4,245	79,694	41,674	12,023	2,992	9,407	71,250	9,219	9,860	30,663
		(20.8)	(20.2)	(23.6)	(7.8)	(20.4)	(21.9)	(20.5)	(67.1)	(52.3)	(16.5)	(15.2)	(19.5)	(41.0)
955	955	136,252	54,735	77,272	4,245	81,422	41,974	12,857	3,114	9,529	72,661	9,563	10,377	31,008
		(21.3)	(20.3)	(24.4)	(7.8)	(20.8)	(22.1)	(21.9)	(69.8)	(53.0)	(16.8)	(15.7)	(20.5)	(41.5)
956	956	137,906	54,735	78,237	4,933	82,387	42,662	12,857	3,114	9,900	73,710	9,563	10,549	31,180
		(21.6)	(20.3)	(24.7)	(9.1)	(21.9)	(22.4)	(21.9)	(69.8)	(54.5)	(17.1)	(15.7)	(20.8)	(41.7)
957	957	139,855	54,791	79,442	5,622	83,592	43,406	12,857	3,114	9,900	73,937	9,563	10,810	32,640
		(21.9)	(20.4)	(25.1)	(10.4)	(21.9)	(22.8)	(21.9)	(69.8)	(54.5)	(17.1)	(15.7)	(21.4)	(43.6)
958	958	140,439	54,791	79,854	5,794	83,853	43,729	12,857	3,114	9,900	74,521	9,563	10,810	32,640
		(21.9)	(20.4)	(25.2)	(10.7)	(21.9)	(23.0)	(21.9)	(69.8)	(54.5)	(17.3)	(15.7)	(21.4)	(43.6)
959	959	141,223	54,964	80,466	5,794	84,465	43,902	12,857	3,114	9,900	75,306	9,563	10,810	32,640
		(22.1)	(20.4)	(25.4)	(10.7)	(21.9)	(23.1)	(21.9)	(69.8)	(54.5)	(17.5)	(15.7)	(21.4)	(43.6)
960	960	151,515	58,050	86,370	7,095	88,902	48,045	14,568	3,114	10,402	82,085	11,033	11,888	32,993
		(23.7)	(21.6)	(27.3)	(13.1)	(22.7)	(25.2)	(24.8)	(69.8)	(57.9)	(19.0)	(18.2)	(23.5)	(44.1)
961	961	152,385	58,050	86,723	7,611	89,256	48,561	14,568	3,114	10,663	82,522	11,033	12,060	32,993
		(23.8)	(21.6)	(27.4)	(14.1)	(22.8)	(25.5)	(24.8)	(69.8)	(59.3)	(19.1)	(18.2)	(23.8)	(44.1)
962	962	152,904	58,218	87,074	7,611	89,775	48,561	14,568	3,114	10,663	83,041	11,033	12,060	32,993
		(23.9)	(21.6)	(27.5)	(14.1)	(23.0)	(25.5)	(24.8)	(69.8)	(59.3)	(19.3)	(18.2)	(23.8)	(44.1)
963	963	152,904	58,218	87,074	7,611	89,775	48,561	14,568	3,114	10,663	83,041	11,033	12,060	32,993
		(23.9)	(21.6)	(27.5)	(14.1)	(23.0)	(25.5)	(24.8)	(69.8)	(59.3)	(19.3)	(18.2)	(23.8)	(44.1)
964	964	153,148	58,463	87,074	7,611	89,775	48,806	14,568	3,114	10,663	83,163	11,155	12,060	32,993
		(23.9)	(21.7)	(27.5)	(14.1)	(23.0)	(25.6)	(24.8)	(69.8)	(59.3)	(19.3)	(18.4)	(23.8)	(44.1)
965	965	154,874	58,640	87,419	8,816	90,157	50,066	14,651	3,114	10,663	84,117	11,155	12,660	33,165
		(21.8)	(16.3)	(23.1)	(16.3)	(23.1)	(26.3)	(25.0)	(69.8)	(59.3)	(19.5)	(18.4)	(25.0)	(44.3)
966	966	155,996	58,886	88,294	8,816	91,279	50,066	14,651	3,114	10,663	84,456	11,155	12,921	33,686
		(21.9)	(16.3)	(23.3)	(16.3)	(23.3)	(26.3)	(25.0)	(69.8)	(59.3)	(19.6)	(18.4)	(25.5)	(45.0)
967	967	156,460	58,886	88,758	8,816	91,743	50,066	14,651	3,114	10,663	84,921	11,155	12,921	33,686
		(21.9)	(16.3)	(23.5)	(16.3)	(23.5)	(26.3)	(25.0)	(69.8)	(59.3)	(19.7)	(18.4)	(25.5)	(45.0)
968	968	156,460	58,886	88,758	8,816	91,743	50,066	14,651	3,114	10,663	84,921	11,155	12,921	33,686
		(21.9)	(16.3)	(23.5)	(16.3)	(23.5)	(26.3)	(25.0)	(69.8)	(59.3)	(19.7)	(18.4)	(25.5)	(45.0)
969	969	156,681	59,107	88,758	8,816	91,743	50,287	14,651	3,114	10,663	84,921	11,266	12,921	33,797
		(24.5)	(22.0)	(28.0)	(16.3)	(23.5)	(26.4)	(25.0)	(69.8)	(59.3)	(19.7)	(18.5)	(25.5)	(45.2)

970	970	163,115 (25.5)	61,273 (22.8)	92,682 (29.3)	9,160 (16.9)	96,412 (24.7)	51,657 (27.1)	15,046 (25.6)	3,276 (73.5)	10,663 (59.3)	88,841 (20.6)	12,256 (20.2)	13,318 (26.3)	34,762 (46.5)
971	971	163,277 (25.5)	61,273 (22.8)	92,844 (29.3)	9,160 (16.9)	96,573 (24.7)	51,657 (27.1)	15,046 (25.6)	3,276 (73.5)	10,663 (59.3)	89,003 (20.6)	12,256 (20.2)	13,318 (26.3)	34,762 (46.5)
972	972	163,475 (25.5)	61,471 (22.8)	92,844 (29.3)	9,160 (16.9)	96,665 (24.7)	51,764 (27.2)	15,046 (25.6)	3,276 (73.5)	10,663 (59.3)	89,201 (20.7)	12,256 (20.2)	13,318 (26.3)	34,762 (46.5)
973	973	163,887 (25.6)	61,471 (22.8)	93,256 (29.5)	9,160 (16.9)	96,926 (24.8)	51,915 (27.3)	15,046 (25.6)	3,276 (73.5)	10,663 (59.3)	89,462 (20.7)	12,256 (20.2)	13,318 (26.3)	34,913 (46.7)
974	974	164,038 (25.6)	61,471 (22.8)	93,407 (29.5)	9,160 (16.9)	96,926 (24.8)	52,066 (27.4)	15,046 (25.6)	3,276 (73.5)	10,663 (59.3)	89,462 (20.7)	12,256 (20.2)	13,318 (26.3)	35,064 (46.9)
975	975	165,158 (25.8)	62,083 (23.1)	93,742 (29.6)	9,332 (17.3)	97,437 (24.9)	52,349 (27.5)	15,372 (26.2)	3,276 (73.5)	10,663 (59.3)	90,471 (21.0)	12,366 (20.4)	13,318 (26.3)	35,064 (46.9)
976	976	166,125 (26.0)	62,205 (23.1)	94,415 (29.8)	9,504 (17.6)	97,958 (25.1)	52,794 (27.7)	15,372 (26.2)	3,276 (73.5)	10,663 (59.3)	91,026 (21.1)	12,366 (20.4)	13,318 (26.3)	35,476 (47.4)
977	977	166,125 (26.0)	62,205 (23.1)	94,415 (29.8)	9,504 (17.6)	97,958 (25.1)	52,794 (27.7)	15,372 (26.2)	3,276 (73.5)	10,663 (59.3)	91,026 (21.1)	12,366 (20.4)	13,318 (26.3)	35,476 (47.4)
978	978	166,653 (26.0)	62,328 (23.2)	94,649 (29.9)	9,676 (17.9)	97,958 (25.1)	53,240 (28.0)	15,455 (26.3)	3,276 (73.5)	10,663 (59.3)	91,231 (21.2)	12,538 (20.6)	13,318 (26.3)	35,627 (47.6)
979	979	166,820 (26.1)	62,494 (23.2)	94,649 (29.9)	9,676 (17.9)	97,958 (25.1)	53,240 (28.0)	15,455 (26.3)	3,276 (73.5)	10,663 (59.3)	91,398 (21.2)	12,538 (20.6)	13,318 (26.3)	35,627 (47.6)
980	980	171,617 (27.8)	68,291 (25.4)	99,078 (31.3)	10,248 (18.9)	104,356 (26.7)	56,740 (28.8)	16,521 (28.1)	3,516 (78.8)	11,148 (62.0)	97,592 (22.6)	14,008 (23.1)	14,083 (27.8)	37,270 (49.8)
990	990	183,665 (28.7)	70,442 (26.2)	102,459 (32.4)	10,764 (19.9)	108,288 (27.7)	58,592 (30.8)	16,785 (28.6)	3,516 (78.8)	11,392 (63.4)	102,216 (23.7)	14,280 (23.5)	14,457 (28.6)	37,804 (50.5)
1000	1000	208,712 (32.6)	87,070 (32.3)	109,408 (34.6)	12,234 (22.6)	120,654 (30.9)	69,967 (36.8)	18,090 (30.8)	4,460 (100.0)	12,640 (70.3)	116,437 (27.0)	16,868 (27.8)	16,100 (31.8)	42,206 (56.4)
1010	1010	212,532 (33.2)	88,655 (32.9)	111,298 (35.2)	12,579 (23.3)	123,261 (31.5)	71,180 (37.4)	18,090 (30.8)		12,640 (70.3)	118,865 (27.6)	17,289 (28.5)	16,530 (32.7)	42,747 (57.1)
1020	1020	219,653 (34.3)	91,232 (33.9)	115,842 (36.6)	12,579 (23.3)	127,186 (32.5)	74,207 (39.0)	18,261 (31.1)		13,078 (72.7)	124,231 (28.8)	17,344 (28.5)	17,136 (33.9)	43,402 (58.0)
1030	1030	225,944 (35.3)	93,492 (34.7)	119,116 (37.6)	13,336 (24.7)	130,560 (33.4)	76,262 (40.1)	19,122 (32.6)		13,525 (75.2)	128,740 (29.8)	17,580 (28.9)	17,397 (34.4)	44,242 (59.1)
1040	1040	232,647 (36.4)	96,246 (35.8)	123,065 (38.9)	13,336 (24.7)	133,827 (34.2)	79,336 (41.7)	19,484 (33.2)		13,895 (77.3)	132,414 (30.7)	17,896 (29.5)	18,368 (36.3)	45,614 (61.0)
1050	1050	241,357 (37.7)	101,129 (37.6)	126,719 (40.0)	13,508 (25.0)	138,118 (35.3)	81,069 (42.6)	22,170 (37.8)		13,895 (77.3)	137,795 (31.9)	19,414 (32.0)	19,463 (38.5)	46,329 (61.9)
1060	1060	246,985 (38.6)	104,095 (38.7)	128,600 (40.6)	14,290 (26.4)	141,313 (36.1)	83,223 (43.7)	22,449 (38.2)		14,136 (78.6)	140,926 (32.7)	20,193 (33.2)	20,264 (40.0)	47,005 (62.8)
1070	1070	251,310 (39.3)	105,590 (39.2)	131,234 (41.4)	14,486 (26.8)	143,305 (36.7)	85,277 (44.8)	22,729 (38.7)		14,136 (78.6)	143,381 (33.2)	20,367 (33.5)	20,903 (41.3)	48,063 (64.3)
1080	1080	256,986 (40.2)	107,362 (39.9)	134,966 (42.6)	14,658 (27.1)	147,794 (37.8)	86,189 (45.3)	23,004 (39.2)		15,295 (85.1)	146,409 (33.9)	20,719 (34.1)	21,297 (42.1)	48,805 (65.2)
1090	1090	261,300 (40.8)	108,602 (40.3)	137,799 (43.5)	14,899 (27.5)	150,310 (38.5)	87,072 (45.8)	23,918 (40.7)		15,295 (85.1)	149,661 (34.1)	21,056 (34.7)	21,727 (42.9)	49,101 (65.6)
1100	1100	314,035 (49.1)	132,519 (49.2)	162,722 (51.4)	18,793 (34.7)	183,139 (46.8)	99,039 (52.0)	31,857 (54.3)		16,673 (92.7)	183,974 (42.7)	26,668 (43.9)	27,806 (54.9)	54,454 (72.8)
1200	1299	368,412 (57.8)	155,706 (57.8)	188,264 (59.5)	24,442 (45.2)	219,528 (56.2)	114,382 (60.1)	34,503 (58.8)		17,622 (98.0)	223,714 (51.9)	31,897 (52.5)	31,109 (61.5)	59,610 (79.7)
1300	1399	405,877 (63.4)	172,114 (63.9)	203,943 (64.4)	29,820 (55.1)	240,575 (61.5)	125,656 (66.0)	39,646 (67.5)		17,622 (98.0)	254,043 (58.9)	34,262 (56.4)	33,576 (66.3)	61,914 (82.8)
1400	1499	440,249 (68.8)	187,099 (68.8)	220,295 (69.6)	32,856 (60.7)	263,896 (67.5)	134,672 (70.8)	41,681 (71.0)		17,622 (98.0)	281,868 (65.4)	36,928 (60.8)	36,399 (84.2)	62,971 (84.2)
1500		639,901 (100.0)	269,201 (100.0)	316,612 (100.0)	54,088 (100.0)	390,918 (100.0)	190,283 (100.0)	58,700 (100.0)		17,978 (100.0)	431,294 (100.0)	60,751 (100.0)	50,611 (100.0)	74,806 (100.0)

項目	186,045	179,862	183,578	231,262	185,284	188,436	183,363	47,661	62,874	200,181	211,362	177,971	127,299
平均賃金額	1,421	1,405	1,419	1,507	1,449	1,392	1,326	955	1,002	1,468	1,560	1,371	1,197
月一人当たり労働時間数	126	123	123	151	122	131	132	50	62	133	127	123	105
第1.20分位	930	930	930	947	930	928	930	928	928	930	930	930	928
第1.10分位	930	930	930	957	930	930	930	930	930	930	940	930	930
第1.4分位	970	989	957	1,060	976	960	970	930	930	1,000	1,000	965	930
第1.0分位	1,200	1,200	1,165	1,351	1,225	1,162	1,144	950	952	1,275	1,268	1,153	990
四分位差係数	0.2708	0.2587	0.2760	0.2983	0.2753	0.2721	0.2541	0.0265	0.0576	0.2645	0.3728	0.2364	0.1458
【上段】	累積労働者数												
【下段】	累積構成比												

04年
 総括表(2) (産業・就業形態別の資金階級別、性別年齢別表)
 就業形態：(全て)
 産業(全て)

産別適用除外を含む全労働者

時間当り所定内賃金額 (3手当を除く)	合計		男						女						
	男性計	17歳以下	18~19歳	20~54歳	55~59歳	60~64歳	65歳以上	女性計	17歳以下	18~19歳	20~54歳	55~59歳	60~64歳	65歳以上	
計	639,901	267,297	644	8,568	190,680	20,848	19,482	27,076	372,604	3,817	9,410	240,614	39,904	31,129	47,730
円	8,965	1,599		1,188	1,188	175	237	7,366	7,366		4,594	283	295	2,194	2,194
917	(1.4)	(0.6)		(0.6)	(0.6)	(0.9)	(2.0)	(0.9)	(2.0)		(1.9)	(0.7)	(0.9)	(4.6)	(4.6)
9057	1,691	1,691		1,188	1,188	175	328	7,366	7,366		4,594	283	295	2,194	2,194
918	(1.4)	(0.6)		(0.6)	(0.6)	(0.9)	(2.0)	(0.9)	(2.0)		(1.9)	(0.7)	(0.9)	(4.6)	(4.6)
919	9,057	1,691		1,188	1,188	175	328	7,366	7,366		4,594	283	295	2,194	2,194
919	(1.4)	(0.6)		(0.6)	(0.6)	(0.9)	(2.0)	(0.9)	(2.0)		(1.9)	(0.7)	(0.9)	(4.6)	(4.6)
920	9,112	1,746		55	1,188	175	328	7,366	7,366		4,594	283	295	2,194	2,194
920	(1.4)	(0.7)		(0.6)	(0.6)	(0.9)	(2.0)	(0.9)	(2.0)		(1.9)	(0.7)	(0.9)	(4.6)	(4.6)
921	9,235	1,746		55	1,188	175	328	7,488	7,488		4,594	283	295	2,316	2,316
921	(1.4)	(0.7)		(0.6)	(0.6)	(0.9)	(2.0)	(0.9)	(2.0)		(1.9)	(0.7)	(0.9)	(4.9)	(4.9)
922	9,235	1,746		55	1,188	175	328	7,488	7,488		4,594	283	295	2,316	2,316
922	(1.4)	(0.7)		(0.6)	(0.6)	(0.9)	(2.0)	(0.9)	(2.0)		(1.9)	(0.7)	(0.9)	(4.9)	(4.9)
923	9,235	1,746		55	1,188	175	328	7,488	7,488		4,594	283	295	2,316	2,316
923	(1.4)	(0.7)		(0.6)	(0.6)	(0.9)	(2.0)	(0.9)	(2.0)		(1.9)	(0.7)	(0.9)	(4.9)	(4.9)
924	9,235	1,746		55	1,188	175	328	7,488	7,488		4,594	283	295	2,316	2,316
924	(1.4)	(0.7)		(0.6)	(0.6)	(0.9)	(2.0)	(0.9)	(2.0)		(1.9)	(0.7)	(0.9)	(4.9)	(4.9)
925	9,235	1,746		55	1,188	175	328	7,488	7,488		4,594	283	295	2,316	2,316
925	(1.4)	(0.7)		(0.6)	(0.6)	(0.9)	(2.0)	(0.9)	(2.0)		(1.9)	(0.7)	(0.9)	(4.9)	(4.9)
926	9,235	1,746		55	1,188	175	328	7,488	7,488		4,594	283	295	2,316	2,316
926	(1.4)	(0.7)		(0.6)	(0.6)	(0.9)	(2.0)	(0.9)	(2.0)		(1.9)	(0.7)	(0.9)	(4.9)	(4.9)
927	9,235	1,746		55	1,188	175	328	7,488	7,488		4,594	283	295	2,316	2,316
927	(1.4)	(0.7)		(0.6)	(0.6)	(0.9)	(2.0)	(0.9)	(2.0)		(1.9)	(0.7)	(0.9)	(4.9)	(4.9)
928	26,313	4,470		357	3,020	285	808	21,842	21,842	748	13,284	2,197	1,481	3,699	3,699
928	(4.1)	(1.7)		(4.2)	(1.6)	(1.5)	(3.0)	(5.9)	(5.9)	(7.9)	(5.5)	(5.5)	(4.8)	(7.7)	(7.7)
929	26,313	4,470		357	3,020	285	808	21,842	21,842	748	13,284	2,197	1,481	3,699	3,699
929	(4.1)	(1.7)		(4.2)	(1.6)	(1.5)	(3.0)	(5.9)	(5.9)	(7.9)	(5.5)	(5.5)	(4.8)	(7.7)	(7.7)
930	85,208	17,598	261	2,363	10,225	746	3,243	67,609	67,609	3,181	35,934	4,798	4,921	17,270	17,270
930	(13.3)	(6.6)	(40.5)	(27.6)	(5.4)	(3.7)	(12.0)	(18.1)	(18.1)	(33.8)	(14.9)	(12.0)	(16.3)	(36.2)	(36.2)
931	86,755	17,598	261	2,363	10,225	746	3,243	69,157	69,157	3,181	35,934	4,798	4,921	18,818	18,818
931	(13.6)	(6.6)	(40.5)	(27.6)	(5.4)	(3.7)	(12.0)	(18.6)	(18.6)	(33.8)	(14.9)	(12.0)	(16.3)	(39.4)	(39.4)
932	86,919	17,598	261	2,363	10,225	746	3,243	69,321	69,321	3,181	35,934	4,798	4,921	18,818	18,818
932	(13.6)	(6.6)	(40.5)	(27.6)	(5.4)	(3.7)	(12.0)	(18.6)	(18.6)	(33.8)	(14.9)	(12.0)	(16.3)	(39.4)	(39.4)
933	87,700	17,598	261	2,363	10,225	746	3,243	70,101	70,101	3,181	36,715	4,798	5,085	18,818	18,818
933	(13.7)	(6.6)	(40.5)	(27.6)	(5.4)	(3.7)	(12.0)	(18.8)	(18.8)	(33.8)	(15.3)	(12.0)	(16.3)	(39.4)	(39.4)
934	87,700	17,598	261	2,363	10,225	746	3,243	70,101	70,101	3,181	36,715	4,798	5,085	18,818	18,818
934	(13.7)	(6.6)	(40.5)	(27.6)	(5.4)	(3.7)	(12.0)	(18.8)	(18.8)	(33.8)	(15.3)	(12.0)	(16.3)	(39.4)	(39.4)
935	88,175	17,760	261	2,363	10,386	746	3,243	70,415	70,415	3,181	36,715	4,954	5,241	19,174	19,174
935	(13.8)	(6.6)	(40.5)	(27.6)	(5.4)	(3.7)	(12.0)	(19.1)	(19.1)	(33.8)	(15.3)	(12.4)	(17.2)	(40.2)	(40.2)
936	88,776	17,760	261	2,363	10,386	746	3,243	71,015	71,015	3,181	36,837	4,954	5,364	19,174	19,174
936	(13.9)	(6.6)	(40.5)	(27.6)	(5.4)	(3.7)	(12.0)	(19.1)	(19.1)	(33.8)	(15.3)	(12.4)	(17.2)	(40.2)	(40.2)
937	89,170	17,935	261	2,363	10,561	746	3,243	71,234	71,234	3,181	37,056	4,954	5,486	19,296	19,296
937	(13.9)	(6.7)	(40.5)	(27.6)	(5.5)	(3.7)	(12.0)	(19.1)	(19.1)	(33.8)	(15.5)	(12.4)	(17.6)	(40.4)	(40.4)
938	89,716	18,086	261	2,363	10,712	746	3,243	71,630	71,630	3,181	37,207	4,954	5,486	19,296	19,296
938	(14.0)	(6.8)	(40.5)	(27.6)	(5.6)	(3.7)	(12.0)	(19.2)	(19.2)	(33.8)	(15.5)	(12.4)	(17.6)	(40.4)	(40.4)
939	89,716	18,086	261	2,363	10,712	746	3,243	71,630	71,630	3,181	37,207	4,954	5,486	19,296	19,296
939	(14.0)	(6.8)	(40.5)	(27.6)	(5.6)	(3.7)	(12.0)	(19.2)	(19.2)	(33.8)	(15.5)	(12.4)	(17.6)	(40.4)	(40.4)
940	95,980	20,037	261	2,525	11,697	746	3,925	75,943	75,943	3,537	38,729	5,533	6,274	20,364	20,364
940	(15.0)	(7.5)	(40.5)	(29.5)	(6.1)	(4.2)	(3.8)	(14.5)	(20.4)	(37.6)	(16.1)	(13.9)	(20.2)	(42.7)	(42.7)
941	96,756	20,367	261	2,525	12,026	746	3,925	76,389	76,389	3,537	38,819	5,533	6,630	20,364	20,364
941	(15.1)	(7.6)	(40.5)	(29.5)	(6.3)	(4.2)	(3.8)	(14.5)	(20.5)	(37.6)	(16.1)	(13.9)	(21.3)	(42.7)	(42.7)

942	942	96,924 (15.1)	20,367 (7.6)	261 (40.5)	2,525 (29.5)	12,026 (6.3)	884 (4.2)	746 (3.8)	3,925 (14.5)	76,558 (20.5)	1,505 (39.4)	3,537 (37.6)	38,987 (16.2)	5,533 (13.9)	6,630 (21.3)	20,364 (42.7)
943	943	97,108 (15.2)	20,367 (7.6)	261 (40.5)	2,525 (29.5)	12,026 (6.3)	884 (4.2)	746 (3.8)	3,925 (14.5)	76,741 (20.6)	1,505 (39.4)	3,537 (37.6)	39,171 (16.3)	5,533 (13.9)	6,630 (21.3)	20,364 (42.7)
944	944	97,108 (15.2)	20,367 (7.6)	261 (40.5)	2,525 (29.5)	12,026 (6.3)	884 (4.2)	746 (3.8)	3,925 (14.5)	76,741 (20.6)	1,505 (39.4)	3,537 (37.6)	39,171 (16.3)	5,533 (13.9)	6,630 (21.3)	20,364 (42.7)
945	945	98,991 (15.5)	20,599 (7.7)	261 (40.5)	2,525 (29.5)	12,136 (6.4)	884 (4.2)	746 (3.8)	4,047 (14.9)	78,393 (21.0)	1,615 (42.3)	3,894 (41.4)	39,767 (16.5)	5,533 (13.9)	6,849 (22.0)	20,735 (43.4)
946	946	101,957 (15.9)	20,949 (7.8)	261 (40.5)	2,525 (29.5)	12,487 (6.5)	884 (4.2)	746 (3.8)	4,047 (14.9)	81,008 (21.7)	1,615 (42.3)	3,894 (41.4)	41,947 (17.4)	5,847 (14.7)	6,849 (22.0)	20,857 (43.7)
947	947	104,452 (16.3)	22,916 (8.6)	261 (40.5)	2,525 (29.5)	12,487 (6.5)	884 (4.2)	890 (4.6)	5,869 (21.7)	81,537 (21.9)	1,615 (42.3)	3,894 (41.4)	41,947 (17.4)	6,134 (15.4)	6,849 (22.0)	21,098 (44.2)
948	948	105,642 (16.5)	22,971 (8.6)	261 (40.5)	2,525 (29.5)	12,542 (6.6)	884 (4.2)	890 (4.6)	5,869 (21.7)	82,671 (22.2)	1,615 (42.3)	3,894 (41.4)	42,580 (17.7)	6,490 (16.3)	6,849 (22.0)	21,243 (44.5)
949	949	105,642 (16.5)	22,971 (8.6)	261 (40.5)	2,525 (29.5)	12,542 (6.6)	884 (4.2)	890 (4.6)	5,869 (21.7)	82,671 (22.2)	1,615 (42.3)	3,894 (41.4)	42,580 (17.7)	6,490 (16.3)	6,849 (22.0)	21,243 (44.5)
950	950	127,963 (20.0)	29,273 (11.0)	261 (40.5)	3,307 (38.6)	17,686 (9.3)	884 (4.2)	1,144 (5.9)	5,992 (22.1)	98,690 (26.5)	2,210 (57.9)	5,057 (53.7)	50,967 (21.2)	7,994 (20.0)	8,544 (27.4)	23,918 (50.1)
951	951	128,578 (20.1)	29,795 (11.1)	261 (40.5)	3,829 (44.7)	17,686 (9.3)	884 (4.2)	1,144 (5.9)	5,992 (22.1)	98,783 (26.5)	2,210 (57.9)	5,057 (53.7)	51,060 (21.2)	7,994 (20.0)	8,544 (27.4)	23,918 (50.1)
952	952	130,880 (20.5)	30,465 (11.4)	522 (81.0)	3,829 (44.7)	17,686 (9.3)	884 (4.2)	1,144 (5.9)	6,401 (23.6)	100,415 (26.9)	2,471 (64.7)	5,318 (56.5)	51,830 (21.5)	8,335 (20.9)	8,544 (27.4)	23,918 (50.1)
953	953	132,461 (20.7)	30,809 (11.5)	522 (81.0)	3,829 (44.7)	17,686 (9.3)	884 (4.2)	1,316 (6.8)	6,573 (24.3)	101,651 (27.3)	2,471 (64.7)	5,579 (59.3)	52,805 (21.9)	8,335 (20.9)	8,544 (27.4)	23,918 (50.1)
954	954	133,390 (20.8)	30,809 (11.5)	522 (81.0)	3,829 (44.7)	17,686 (9.3)	884 (4.2)	1,316 (6.8)	6,573 (24.3)	102,581 (27.5)	2,471 (64.7)	5,579 (59.3)	53,563 (22.3)	8,335 (20.9)	8,544 (27.4)	24,090 (50.5)
955	955	136,252 (21.3)	31,093 (11.6)	522 (81.0)	3,951 (46.1)	17,848 (9.4)	884 (4.2)	1,316 (6.8)	6,573 (24.3)	105,158 (28.2)	2,593 (67.9)	5,579 (59.3)	54,812 (22.8)	8,679 (21.7)	9,061 (29.1)	24,435 (51.2)
956	956	137,906 (21.6)	31,266 (11.7)	522 (81.0)	3,951 (46.1)	18,021 (9.5)	884 (4.2)	1,316 (6.8)	6,573 (24.3)	106,640 (28.6)	2,593 (67.9)	5,839 (62.1)	55,689 (23.1)	8,679 (21.7)	9,234 (29.7)	24,607 (51.6)
957	957	139,855 (21.9)	31,321 (11.7)	522 (81.0)	3,951 (46.1)	18,076 (9.5)	884 (4.2)	1,316 (6.8)	6,573 (24.3)	108,534 (29.1)	2,593 (67.9)	5,839 (62.1)	55,861 (23.2)	8,679 (21.7)	9,494 (30.5)	26,067 (54.6)
958	958	140,439 (21.9)	31,644 (11.8)	522 (81.0)	3,951 (46.1)	18,399 (9.6)	884 (4.2)	1,316 (6.8)	6,573 (24.3)	108,795 (29.3)	2,593 (67.9)	5,839 (62.1)	56,122 (23.3)	8,679 (21.7)	9,494 (30.5)	26,067 (54.6)
959	959	141,223 (22.1)	31,905 (11.9)	522 (81.0)	3,951 (46.1)	18,660 (9.8)	884 (4.2)	1,316 (6.8)	6,573 (24.3)	109,319 (29.3)	2,593 (67.9)	5,839 (62.1)	56,646 (23.5)	8,679 (21.7)	9,494 (30.5)	26,067 (54.6)
960	960	151,515 (23.7)	33,463 (12.5)	522 (81.0)	4,302 (50.2)	19,757 (10.4)	884 (4.2)	1,316 (6.8)	6,684 (24.7)	118,051 (31.7)	2,593 (67.9)	6,100 (64.8)	62,328 (25.9)	10,149 (25.4)	10,572 (34.0)	26,309 (55.1)
961	961	152,385 (23.8)	33,463 (12.5)	522 (81.0)	4,302 (50.2)	19,757 (10.4)	884 (4.2)	1,316 (6.8)	6,684 (24.7)	118,922 (31.9)	2,593 (67.9)	6,361 (67.6)	62,765 (26.1)	10,149 (25.4)	10,744 (34.5)	26,309 (55.1)
962	962	152,904 (23.9)	33,892 (12.7)	522 (81.0)	4,302 (50.2)	20,185 (10.6)	884 (4.2)	1,316 (6.8)	6,684 (24.7)	119,012 (31.9)	2,593 (67.9)	6,361 (67.6)	62,855 (26.1)	10,149 (25.4)	10,744 (34.5)	26,309 (55.1)
963	963	152,904 (23.9)	33,892 (12.7)	522 (81.0)	4,302 (50.2)	20,185 (10.6)	884 (4.2)	1,316 (6.8)	6,684 (24.7)	119,012 (31.9)	2,593 (67.9)	6,361 (67.6)	62,855 (26.1)	10,149 (25.4)	10,744 (34.5)	26,309 (55.1)
964	964	153,148 (23.9)	33,892 (12.7)	522 (81.0)	4,302 (50.2)	20,185 (10.6)	884 (4.2)	1,316 (6.8)	6,684 (24.7)	119,256 (32.0)	2,593 (67.9)	6,361 (67.6)	62,978 (26.2)	10,271 (25.7)	10,744 (34.5)	26,309 (55.1)
965	965	154,874 (24.2)	34,208 (12.8)	522 (81.0)	4,302 (50.2)	20,502 (10.8)	884 (4.2)	1,316 (6.8)	6,684 (24.7)	120,666 (32.4)	2,593 (67.9)	6,361 (67.6)	63,616 (26.4)	10,271 (25.7)	11,344 (36.4)	26,481 (55.5)
966	966	155,996 (24.4)	34,469 (12.9)	522 (81.0)	4,302 (50.2)	20,502 (10.8)	884 (4.2)	1,577 (8.1)	6,684 (24.7)	121,527 (32.6)	2,593 (67.9)	6,361 (67.6)	63,955 (26.6)	10,271 (25.7)	11,344 (36.4)	27,003 (56.6)
967	967	156,460 (24.5)	34,748 (13.0)	522 (81.0)	4,302 (50.2)	20,780 (10.9)	884 (4.2)	1,577 (8.1)	6,684 (24.7)	121,713 (32.7)	2,593 (67.9)	6,361 (67.6)	64,141 (26.7)	10,271 (25.7)	11,344 (36.4)	27,003 (56.6)
968	968	156,460 (24.5)	34,748 (13.0)	522 (81.0)	4,302 (50.2)	20,780 (10.9)	884 (4.2)	1,577 (8.1)	6,684 (24.7)	121,713 (32.7)	2,593 (67.9)	6,361 (67.6)	64,141 (26.7)	10,271 (25.7)	11,344 (36.4)	27,003 (56.6)
969	969	156,681 (24.5)	34,748 (13.0)	522 (81.0)	4,302 (50.2)	20,780 (10.9)	884 (4.2)	1,577 (8.1)	6,684 (24.7)	121,934 (32.7)	2,593 (67.9)	6,361 (67.6)	64,141 (26.7)	10,382 (26.0)	11,344 (36.4)	27,113 (56.8)

970	970	163,115 (25.5)	35,941 (13.4)	522 (81.0)	4,302 (50.2)	21,119 (11.1)	1,145 (5.5)	1,577 (8.1)	7,278 (26.9)	127,174 (34.1)	2,755 (72.2)	6,361 (67.6)	67,722 (28.1)	11,111 (27.8)	11,741 (37.7)	27,484 (57.6)
971	971	163,277 (25.5)	35,941 (13.4)	522 (81.0)	4,302 (50.2)	21,119 (11.1)	1,145 (5.5)	1,577 (8.1)	7,278 (26.9)	127,336 (34.2)	2,755 (72.2)	6,361 (67.6)	67,884 (28.2)	11,111 (27.8)	11,741 (37.7)	27,484 (57.6)
972	972	163,475 (25.5)	35,941 (13.4)	522 (81.0)	4,302 (50.2)	21,119 (11.1)	1,145 (5.5)	1,577 (8.1)	7,278 (26.9)	127,534 (34.2)	2,755 (72.2)	6,361 (67.6)	68,083 (28.3)	11,111 (27.8)	11,741 (37.7)	27,484 (57.6)
973	973	163,887 (25.6)	35,941 (13.4)	522 (81.0)	4,302 (50.2)	21,119 (11.1)	1,145 (5.5)	1,577 (8.1)	7,278 (26.9)	127,946 (34.3)	2,755 (72.2)	6,361 (67.6)	68,343 (28.4)	11,111 (27.8)	11,741 (37.7)	27,635 (57.9)
974	974	164,038 (25.6)	35,941 (13.4)	522 (81.0)	4,302 (50.2)	21,119 (11.1)	1,145 (5.5)	1,577 (8.1)	7,278 (26.9)	128,097 (34.4)	2,755 (72.2)	6,361 (67.6)	68,343 (28.4)	11,111 (27.8)	11,741 (37.7)	27,786 (58.2)
975	975	165,158 (25.8)	35,941 (13.4)	522 (81.0)	4,302 (50.2)	21,119 (11.1)	1,145 (5.5)	1,577 (8.1)	7,278 (26.9)	129,216 (34.7)	2,755 (72.2)	6,361 (67.6)	69,352 (28.8)	11,222 (28.1)	11,741 (37.7)	27,786 (58.2)
976	976	166,125 (26.0)	36,113 (13.5)	522 (81.0)	4,302 (50.2)	21,291 (11.2)	1,145 (5.5)	1,577 (8.1)	7,278 (26.9)	130,011 (34.9)	2,755 (72.2)	6,361 (67.6)	69,735 (29.0)	11,222 (28.1)	11,741 (37.7)	28,198 (59.1)
977	977	166,125 (26.0)	36,113 (13.5)	522 (81.0)	4,302 (50.2)	21,291 (11.2)	1,145 (5.5)	1,577 (8.1)	7,278 (26.9)	130,011 (34.9)	2,755 (72.2)	6,361 (67.6)	69,735 (29.0)	11,222 (28.1)	11,741 (37.7)	28,198 (59.1)
978	978	166,653 (26.0)	36,319 (13.6)	522 (81.0)	4,302 (50.2)	21,496 (11.3)	1,145 (5.5)	1,577 (8.1)	7,278 (26.9)	130,334 (35.0)	2,755 (72.2)	6,361 (67.6)	69,735 (29.0)	11,394 (28.6)	11,741 (37.7)	28,349 (59.4)
979	979	166,820 (26.1)	36,319 (13.6)	522 (81.0)	4,302 (50.2)	21,496 (11.3)	1,145 (5.5)	1,577 (8.1)	7,278 (26.9)	130,501 (35.0)	2,755 (72.2)	6,361 (67.6)	69,902 (29.1)	11,394 (28.6)	11,741 (37.7)	28,349 (59.4)
980	980	177,617 (27.8)	37,107 (13.9)	522 (81.0)	4,302 (50.2)	21,868 (11.5)	1,267 (6.1)	1,775 (9.1)	7,374 (27.2)	140,510 (37.7)	2,995 (78.5)	6,846 (72.8)	75,724 (31.5)	12,741 (31.9)	12,308 (37.7)	29,896 (62.6)
990	990	183,665 (28.7)	38,886 (14.5)	522 (81.0)	4,546 (53.1)	22,990 (12.1)	1,267 (6.1)	2,066 (10.6)	7,496 (27.7)	144,779 (38.9)	2,995 (78.5)	7,222 (76.7)	79,226 (32.9)	13,013 (32.6)	12,391 (39.8)	30,308 (63.5)
1,000	1,009	208,712 (32.6)	43,976 (16.5)	644 (100.0)	5,418 (63.2)	25,443 (13.3)	1,389 (6.7)	2,280 (11.7)	8,802 (32.5)	164,736 (44.8)	3,817 (100.0)	7,222 (76.7)	90,994 (37.8)	15,479 (38.8)	13,820 (44.4)	33,404 (70.0)
1,010	1,019	212,532 (33.2)	45,772 (17.1)		5,418 (63.2)	26,592 (13.9)	1,444 (6.9)	2,452 (12.6)	9,221 (34.1)	166,760 (44.8)		7,222 (76.7)	92,723 (38.3)	15,845 (39.7)	14,079 (45.2)	33,525 (70.2)
1,020	1,029	219,653 (34.3)	48,141 (18.0)		5,528 (64.5)	28,225 (14.8)	1,444 (6.9)	2,725 (14.0)	9,575 (35.4)	171,512 (46.0)		7,551 (80.2)	96,007 (39.9)	15,900 (41.3)	14,411 (46.3)	33,827 (70.9)
1,030	1,039	225,944 (35.3)	49,910 (18.7)		5,891 (68.8)	29,387 (15.4)	1,444 (6.9)	2,725 (14.0)	9,820 (36.3)	176,034 (47.2)		7,634 (81.1)	99,353 (42.4)	16,136 (40.4)	14,672 (47.1)	34,423 (72.1)
1,040	1,049	232,647 (36.4)	51,890 (19.4)		6,000 (70.0)	30,498 (16.0)	1,444 (6.9)	2,725 (14.0)	10,579 (39.1)	180,757 (48.5)		7,895 (83.9)	101,917 (42.4)	16,452 (41.2)	15,642 (50.3)	35,035 (73.4)
1,050	1,059	241,357 (37.7)	53,610 (20.1)		6,000 (70.0)	31,856 (16.7)	1,444 (6.9)	2,725 (14.0)	10,941 (40.4)	187,747 (50.4)		7,895 (83.9)	105,939 (44.0)	17,970 (45.0)	16,738 (53.8)	35,388 (74.1)
1,060	1,069	246,985 (38.6)	54,933 (20.6)		6,241 (72.8)	32,270 (16.9)	1,617 (7.8)	2,989 (15.3)	11,172 (41.3)	192,052 (51.5)		7,895 (83.9)	108,656 (46.6)	18,576 (46.6)	17,275 (55.5)	35,834 (75.1)
1,070	1,079	251,310 (39.3)	56,439 (21.1)		6,241 (72.8)	32,546 (17.1)	1,701 (8.2)	3,415 (17.5)	11,892 (43.9)	194,871 (52.3)		7,895 (83.9)	110,835 (46.1)	18,666 (46.8)	17,487 (56.2)	36,171 (75.8)
1,080	1,089	256,986 (40.2)	58,043 (21.7)		6,889 (80.4)	33,032 (17.3)	1,873 (9.0)	3,415 (17.5)	12,190 (45.0)	198,943 (53.4)		8,406 (89.3)	113,377 (47.1)	18,846 (47.2)	17,881 (57.4)	36,615 (76.7)
1,090	1,099	261,300 (40.8)	59,371 (22.2)		6,889 (80.4)	34,021 (17.8)	1,873 (9.0)	3,672 (18.8)	12,273 (45.3)	201,929 (54.2)		8,406 (89.3)	115,640 (48.1)	19,184 (48.1)	18,055 (58.0)	36,827 (77.2)
1,100	1,199	314,035 (49.1)	74,909 (28.0)		7,619 (88.9)	43,621 (22.9)	2,809 (13.5)	6,119 (31.4)	14,098 (52.1)	239,126 (64.2)		9,054 (96.2)	140,354 (58.3)	23,859 (59.8)	21,687 (69.7)	40,355 (84.5)
1,200	1,299	368,412 (57.6)	96,836 (36.2)		8,212 (95.8)	60,188 (31.6)	3,553 (17.0)	7,831 (40.2)	16,409 (60.6)	271,576 (72.9)		9,410 (100.0)	163,526 (68.0)	28,344 (71.0)	23,278 (74.8)	43,201 (90.5)
1,300	1,399	405,877 (63.4)	114,375 (42.8)		8,212 (95.8)	74,292 (39.0)	4,472 (21.5)	8,959 (46.0)	17,796 (65.7)	291,502 (78.2)			179,750 (74.7)	29,790 (79.1)	24,617 (92.4)	44,118 (94.5)
1,400	1,499	440,249 (68.8)	133,523 (50.0)		8,212 (95.8)	90,329 (47.4)	5,225 (25.1)	10,773 (55.3)	18,340 (67.7)	306,726 (82.3)			191,559 (79.6)	31,703 (82.3)	25,626 (82.3)	44,631 (93.5)
1,500	1,500	639,901 (100.0)	267,297 (100.0)		8,568 (100.0)	190,680 (100.0)	20,848 (100.0)	19,482 (100.0)	27,076 (100.0)	372,604 (100.0)			240,614 (100.0)	39,904 (100.0)	31,129 (100.0)	47,730 (100.0)

月 時 間 一 人 一 當 た り 平 均 賃 金 額 額 額	【上段】			【下段】			累積構成比			93,359 1,048 91				
	累積労働者数	累積賃金総額	平均賃金	累積労働者数	累積賃金総額	平均賃金	累積労働者数	累積賃金総額	平均賃金					
四	186,045	248,823	1,337	62,011	75,288	1,198	336,049	244,438	1,337	146,220	155,215	1,100	136,372	93,359
中	1,421	1,676	1,182	952	1,026	1,074	2,041	1,616	1,237	1,309	1,280	1,09	1,217	1,048
第1	126	148	118	65	73	114	162	153	110	109	117	52	105	91
第2	930	930	930	930	930	930	970	950	928	928	928	928	930	928
第3	930	950	930	930	930	930	1,143	991	930	930	930	930	930	930
第4	970	1,140	1,171	930	930	930	1,497	1,153	950	960	960	930	950	930
位	1,200	1,500	1,250	952	960	960	1,966	1,404	1,051	1,100	1,109	950	1,047	950
差	0.2708	0.2541	0.277	0.0120	0.0783	0.2177	0.2262	0.2363	0.1803	0.2046	0.2002	0.100	0.1674	0.0698
率														

最低賃金引上げ額・率と影響率の関係表

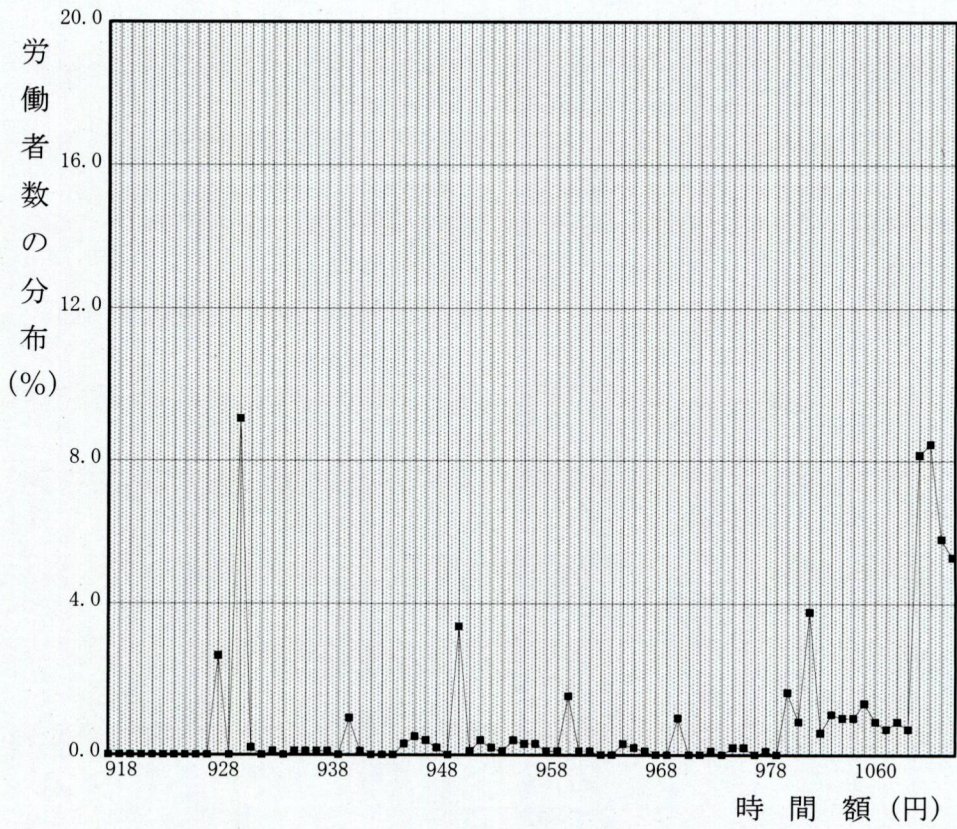
件名					
業種					
現行の最低賃金額	時間額			928円	
未満率	1.4%				
項番	時間額			影響率	未満労働者数
	引上げ額	引上げ率	引上げ後時間額		
1	1	0.11	929	4.11	26,313
2	2	0.22	930	4.11	26,313
3	3	0.32	931	13.32	85,208
4	4	0.43	932	13.56	86,755
5	5	0.54	933	13.58	86,919
6	6	0.65	934	13.71	87,700
7	7	0.75	935	13.71	87,700
8	8	0.86	936	13.78	88,175
9	9	0.97	937	13.87	88,776
10	10	1.08	938	13.93	89,170
11	11	1.19	939	14.02	89,716
12	12	1.29	940	14.02	89,716
13	13	1.40	941	15.00	95,980
14	14	1.51	942	15.12	96,756
15	15	1.62	943	15.15	96,924
16	16	1.72	944	15.18	97,108
17	17	1.83	945	15.18	97,108
18	18	1.94	946	15.47	98,991
19	19	2.05	947	15.93	101,957
20	20	2.16	948	16.32	104,452
21	21	2.26	949	16.51	105,642
22	22	2.37	950	16.51	105,642
23	23	2.48	951	20.00	127,963
24	24	2.59	952	20.09	128,578
25	25	2.69	953	20.45	130,880
26	26	2.80	954	20.70	132,461
27	27	2.91	955	20.85	133,390
28	28	3.02	956	21.29	136,252
29	29	3.13	957	21.55	137,906
30	30	3.23	958	21.86	139,855
31	31	3.34	959	21.95	140,439
32	32	3.45	960	22.07	141,223
33	33	3.56	961	23.68	151,515
34	34	3.66	962	23.81	152,385
35	35	3.77	963	23.89	152,904

最低賃金引上げ額・率と影響率の関係表

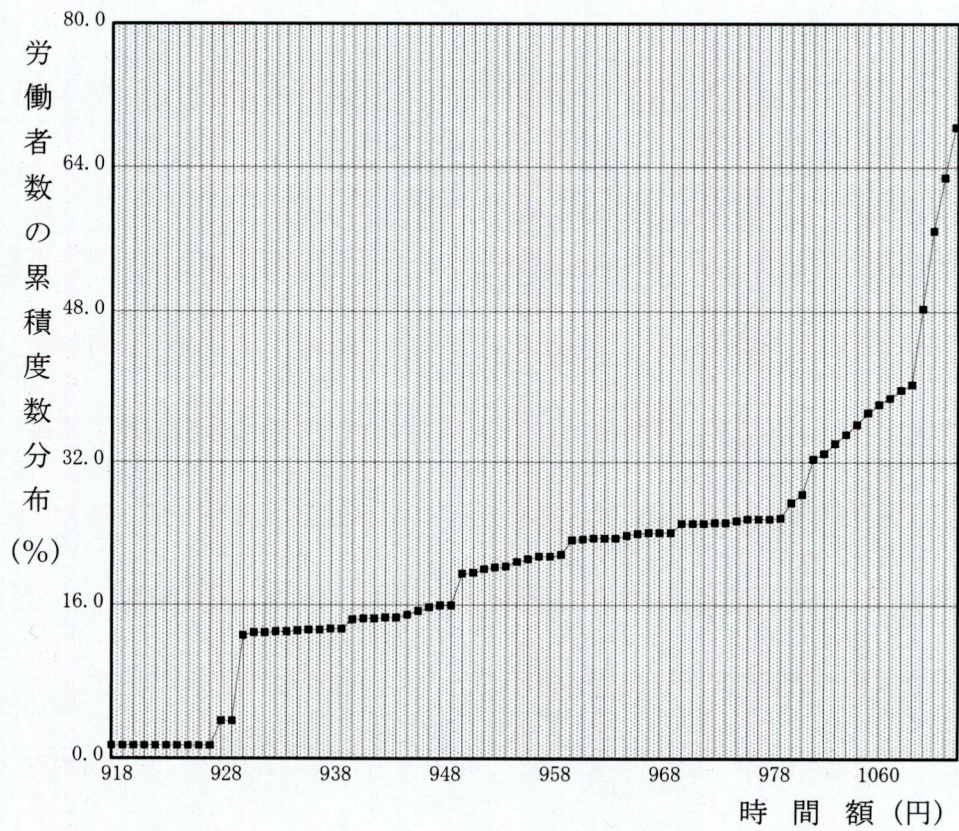
件名					
業種					
現行の最低賃金額	時間額			928円	
未満率	1.4%				
項番	時間額			影響率	未満労働者数
	引上げ額	引上げ率	引上げ後時間額		
36	36	3.88	964	23.89	152,904
37	37	3.99	965	23.93	153,148
38	38	4.09	966	24.20	154,874
39	39	4.20	967	24.38	155,996
40	40	4.31	968	24.45	156,460
41	41	4.42	969	24.45	156,460
42	42	4.53	970	24.49	156,681
43	43	4.63	971	25.49	163,115
44	44	4.74	972	25.52	163,277
45	45	4.85	973	25.55	163,475
46	46	4.96	974	25.61	163,887
47	47	5.06	975	25.63	164,038
48	48	5.17	976	25.81	165,158
49	49	5.28	977	25.96	166,125
50	50	5.39	978	25.96	166,125

B0-012-00 R 4. 7.26 * 2ページ

時間額に対するその該当労働者数の分布



時間額に対するその該当労働者数の累積度数分布



総括表(1) (産業・就業形態別の資金階級別、規模別、地域別、年齢別表)
04年

産業：(全て) E-製造業

就業形態：(全て)

産別通用除外含む全労働者

時間当り所定内資金額 (3手当を除く)	合計	規模別					地域別					年齢別																													
		10~29人					30~99人					17歳以下					18~19歳					20~54歳					55~59歳					60~64歳					65歳以上				
		1~9人	10~29人	30~99人	100~299人	300人以上	阪神	播磨	県北・淡路	その他	合計	17歳以下	18~19歳	20~54歳	55~59歳	60~64歳	65歳以上																								
計	114,358	23,981	36,362	54,015	45,897	51,383	17,078	840	78,172	10,317	11,535	13,494	308	110	92	646																									
円	1,156	773	383	278	278	529	350	308	308	110	110	13,494	308	110	92	646																									
917	(1.0)	(3.2)	(1.1)	(0.6)	(0.6)	(1.0)	(2.0)	(0.4)	(0.4)	(1.1)	(0.8)	(4.8)	(0.4)	(1.1)	(0.8)	(4.8)																									
918	1,248	864	383	369	369	529	350	308	308	110	110	738	308	110	92	738																									
919	(1.1)	(3.6)	(1.1)	(0.8)	(0.8)	(1.0)	(2.0)	(0.4)	(0.4)	(1.1)	(0.8)	(5.5)	(0.4)	(1.1)	(0.8)	(5.5)																									
920	1,248	864	383	369	369	529	350	308	308	110	110	738	308	110	92	738																									
921	(1.1)	(3.6)	(1.1)	(0.8)	(0.8)	(1.0)	(2.0)	(0.4)	(0.4)	(1.1)	(0.8)	(5.5)	(0.4)	(1.1)	(0.8)	(5.5)																									
922	1,248	864	383	369	369	529	350	308	308	110	110	738	308	110	92	738																									
923	(1.1)	(3.6)	(1.1)	(0.8)	(0.8)	(1.0)	(2.0)	(0.4)	(0.4)	(1.1)	(0.8)	(5.5)	(0.4)	(1.1)	(0.8)	(5.5)																									
924	1,248	864	383	369	369	529	350	308	308	110	110	738	308	110	92	738																									
925	(1.1)	(3.6)	(1.1)	(0.8)	(0.8)	(1.0)	(2.0)	(0.4)	(0.4)	(1.1)	(0.8)	(5.5)	(0.4)	(1.1)	(0.8)	(5.5)																									
926	1,248	864	383	369	369	529	350	308	308	110	110	738	308	110	92	738																									
927	(1.1)	(3.6)	(1.1)	(0.8)	(0.8)	(1.0)	(2.0)	(0.4)	(0.4)	(1.1)	(0.8)	(5.5)	(0.4)	(1.1)	(0.8)	(5.5)																									
928	2,586	1,720	383	852	852	860	874	1,405	1,405	110	110	333	1,405	110	92	738																									
929	(2.3)	(7.2)	(1.1)	(0.9)	(1.9)	(1.7)	(5.1)	(5.1)	(1.8)	(1.1)	(0.8)	(5.5)	(1.8)	(1.1)	(0.8)	(5.5)																									
930	7,934	2,768	2,919	2,247	1,219	3,366	3,350	2,775	2,775	285	285	3,757	2,775	285	1,117	3,757																									
931	(6.9)	(11.5)	(8.0)	(4.2)	(2.7)	(6.6)	(19.6)	(19.6)	(3.5)	(2.8)	(2.8)	(21.8)	(3.5)	(2.8)	(9.7)	(21.8)																									
932	7,934	2,768	2,919	2,247	1,219	3,366	3,350	2,775	2,775	285	285	3,757	2,775	285	1,117	3,757																									
933	(6.9)	(11.5)	(8.0)	(4.2)	(2.7)	(6.6)	(19.6)	(19.6)	(3.5)	(2.8)	(2.8)	(21.8)	(3.5)	(2.8)	(9.7)	(21.8)																									
934	7,934	2,768	2,919	2,247	1,219	3,366	3,350	2,775	2,775	285	285	3,757	2,775	285	1,117	3,757																									
935	(6.9)	(11.5)	(8.0)	(4.2)	(2.7)	(6.6)	(19.6)	(19.6)	(3.5)	(2.8)	(2.8)	(21.8)	(3.5)	(2.8)	(9.7)	(21.8)																									
936	7,934	2,768	2,919	2,247	1,219	3,366	3,350	2,775	2,775	285	285	3,757	2,775	285	1,117	3,757																									
937	(6.9)	(11.5)	(8.0)	(4.2)	(2.7)	(6.6)	(19.6)	(19.6)	(3.5)	(2.8)	(2.8)	(21.8)	(3.5)	(2.8)	(9.7)	(21.8)																									
938	8,109	2,943	2,919	2,247	1,219	3,366	3,525	2,949	2,949	285	285	3,757	2,949	285	1,117	3,757																									
939	(7.1)	(12.3)	(8.0)	(4.2)	(2.7)	(6.6)	(20.6)	(20.6)	(3.8)	(2.8)	(2.8)	(27.8)	(3.8)	(2.8)	(9.7)	(27.8)																									
940	8,753	3,586	2,919	2,247	1,402	3,476	3,874	3,060	3,060	285	285	4,115	3,060	285	1,292	4,115																									
941	(7.7)	(15.0)	(8.0)	(4.2)	(3.1)	(6.8)	(22.7)	(22.7)	(3.9)	(2.8)	(2.8)	(30.5)	(3.9)	(2.8)	(11.2)	(30.5)																									

942	8,753	3,586	2,919	2,247	1,402	3,476	3,874	3,060	285	1,292	4,115
942 -	(7.7)	(15.0)	(8.0)	(4.2)	(3.1)	(6.8)	(22.7)	(3.9)	(2.8)	(11.2)	(30.5)
943	8,936	3,770	2,919	2,247	1,585	3,476	3,874	3,243	285	1,292	4,115
943 -	(7.8)	(15.7)	(8.0)	(4.2)	(3.5)	(6.8)	(22.7)	(4.1)	(2.8)	(11.2)	(30.5)
944	8,936	3,770	2,919	2,247	1,585	3,476	3,874	3,243	285	1,292	4,115
944 -	(7.8)	(15.7)	(8.0)	(4.2)	(3.5)	(6.8)	(22.7)	(4.1)	(2.8)	(11.2)	(30.5)
945	8,936	3,770	2,919	2,247	1,585	3,476	3,874	3,243	285	1,292	4,115
945 -	(7.8)	(15.7)	(8.0)	(4.2)	(3.5)	(6.8)	(22.7)	(4.1)	(2.8)	(11.2)	(30.5)
946	9,177	3,770	2,919	2,488	1,827	3,476	3,874	3,485	285	1,292	4,115
946 -	(8.0)	(15.7)	(8.0)	(4.6)	(4.0)	(6.8)	(22.7)	(4.5)	(2.8)	(11.2)	(30.5)
947	9,660	3,770	2,919	2,971	2,309	3,476	3,874	3,485	285	1,292	4,598
947 -	(8.4)	(15.7)	(8.0)	(5.5)	(5.0)	(6.8)	(22.7)	(4.5)	(2.8)	(11.2)	(34.1)
948	9,660	3,770	2,919	2,971	2,309	3,476	3,874	3,485	285	1,292	4,598
948 -	(8.4)	(15.7)	(8.0)	(5.5)	(5.0)	(6.8)	(22.7)	(4.5)	(2.8)	(11.2)	(34.1)
949	9,660	3,770	2,919	2,971	2,309	3,476	3,874	3,485	285	1,292	4,598
949 -	(8.4)	(15.7)	(8.0)	(5.5)	(5.0)	(6.8)	(22.7)	(4.5)	(2.8)	(11.2)	(34.1)
950	12,534	5,407	3,984	3,143	2,585	5,543	4,405	4,749	570	1,977	5,237
950 -	(11.0)	(22.5)	(11.0)	(5.8)	(5.6)	(10.8)	(25.8)	(6.1)	(5.5)	(17.1)	(38.8)
951	12,626	5,407	4,077	3,143	2,678	5,543	4,405	4,842	570	1,977	5,237
951 -	(11.0)	(22.5)	(11.2)	(5.8)	(5.8)	(10.8)	(25.8)	(6.2)	(5.5)	(17.1)	(38.8)
952	12,868	5,407	4,077	3,384	2,920	5,543	4,405	4,842	570	1,977	5,237
952 -	(11.3)	(22.5)	(11.2)	(6.3)	(6.4)	(10.8)	(25.8)	(6.2)	(5.5)	(17.1)	(38.8)
953	13,556	5,407	4,077	4,073	2,920	6,232	4,405	5,186	570	2,149	5,650
953 -	(11.9)	(22.5)	(11.2)	(7.5)	(6.4)	(12.1)	(25.8)	(6.6)	(5.5)	(18.6)	(41.9)
954	13,728	5,407	4,077	4,245	2,920	6,404	4,405	5,186	570	2,149	5,823
954 -	(12.0)	(22.5)	(11.2)	(7.9)	(6.4)	(12.5)	(25.8)	(6.6)	(5.5)	(18.6)	(43.1)
955	13,728	5,407	4,077	4,245	2,920	6,404	4,405	5,186	570	2,149	5,823
955 -	(12.0)	(22.5)	(11.2)	(7.9)	(6.4)	(12.5)	(25.8)	(6.6)	(5.5)	(18.6)	(43.1)
956	14,510	5,407	4,169	4,933	3,012	7,092	4,405	5,624	570	2,321	5,995
956 -	(12.7)	(22.5)	(11.5)	(9.1)	(6.6)	(13.8)	(25.8)	(7.2)	(5.5)	(20.1)	(44.4)
957	15,198	5,407	4,169	5,622	3,012	7,781	4,405	5,796	570	2,321	6,511
957 -	(13.3)	(22.5)	(11.5)	(10.4)	(6.6)	(15.1)	(25.8)	(7.4)	(5.5)	(20.1)	(48.3)
958	15,370	5,407	4,169	5,794	3,012	7,953	4,405	5,968	570	2,321	6,511
958 -	(13.4)	(22.5)	(11.5)	(10.7)	(6.6)	(15.5)	(25.8)	(7.6)	(5.5)	(20.1)	(48.3)
959	15,370	5,407	4,169	5,794	3,012	7,953	4,405	5,968	570	2,321	6,511
959 -	(13.4)	(22.5)	(11.5)	(10.7)	(6.6)	(15.5)	(25.8)	(7.6)	(5.5)	(20.1)	(48.3)
960	18,897	5,959	5,843	7,095	3,105	10,603	5,189	8,376	963	2,937	6,622
960 -	(16.5)	(24.9)	(16.1)	(13.1)	(6.8)	(20.6)	(30.4)	(10.7)	(9.3)	(25.5)	(49.1)
961	19,507	5,959	5,936	7,611	3,198	11,119	5,189	8,813	963	3,109	6,622
961 -	(17.1)	(24.9)	(16.3)	(14.1)	(7.0)	(21.6)	(30.4)	(11.3)	(9.3)	(27.0)	(49.1)
962	19,507	5,959	5,936	7,611	3,198	11,119	5,189	8,813	963	3,109	6,622
962 -	(17.1)	(24.9)	(16.3)	(14.1)	(7.0)	(21.6)	(30.4)	(11.3)	(9.3)	(27.0)	(49.1)
963	19,507	5,959	5,936	7,611	3,198	11,119	5,189	8,813	963	3,109	6,622
963 -	(17.1)	(24.9)	(16.3)	(14.1)	(7.0)	(21.6)	(30.4)	(11.3)	(9.3)	(27.0)	(49.1)
964	20,711	5,959	5,936	8,816	3,198	12,324	5,189	9,329	963	3,109	6,622
964 -	(17.1)	(24.9)	(16.3)	(14.1)	(7.0)	(21.6)	(30.4)	(11.3)	(9.3)	(27.0)	(49.1)
965	20,711	5,959	5,936	8,816	3,198	12,324	5,189	9,329	963	3,109	6,622
965 -	(18.1)	(24.9)	(16.3)	(14.1)	(7.0)	(21.6)	(30.4)	(11.3)	(9.3)	(27.0)	(49.1)
966	20,804	5,959	6,029	8,816	3,291	12,324	5,189	9,422	963	3,109	6,622
966 -	(18.2)	(24.9)	(16.3)	(14.1)	(7.2)	(21.6)	(30.4)	(12.1)	(9.3)	(31.4)	(50.3)
967	21,269	5,959	6,494	8,816	3,756	12,324	5,189	9,887	963	3,109	6,622
967 -	(18.6)	(24.9)	(17.9)	(16.3)	(30.4)	(24.0)	(31.4)	(12.6)	(9.3)	(31.4)	(50.3)
968	21,269	5,959	6,494	8,816	3,756	12,324	5,189	9,887	963	3,109	6,622
968 -	(18.6)	(24.9)	(17.9)	(16.3)	(30.4)	(24.0)	(31.4)	(12.6)	(9.3)	(31.4)	(50.3)
969	21,490	6,180	6,494	8,816	3,756	12,545	5,189	9,887	1,073	3,626	6,904
969 -	(18.8)	(25.8)	(17.9)	(16.3)	(8.2)	(24.4)	(30.4)	(12.6)	(10.4)	(31.4)	(51.2)

970	970	21,926 (19.2)	6,272 (26.2)	6,494 (17.9)	9,160 (17.0)	3,847 (8.4)	12,889 (25.1)	5,189 (30.4)	10,231 (13.1)	1,165 (11.3)	3,626 (31.4)	6,904 (51.2)
971	971	21,926 (19.2)	6,272 (26.2)	6,494 (17.9)	9,160 (17.0)	3,847 (8.4)	12,889 (25.1)	5,189 (30.4)	10,231 (13.1)	1,165 (11.3)	3,626 (31.4)	6,904 (51.2)
972	972	22,017 (19.3)	6,364 (26.5)	6,494 (17.9)	9,160 (17.0)	3,939 (8.6)	12,889 (25.1)	5,189 (30.4)	10,323 (13.2)	1,165 (11.3)	3,626 (31.4)	6,904 (51.2)
973	973	22,017 (19.3)	6,364 (26.5)	6,494 (17.9)	9,160 (17.0)	3,939 (8.6)	12,889 (25.1)	5,189 (30.4)	10,323 (13.2)	1,165 (11.3)	3,626 (31.4)	6,904 (51.2)
974	974	22,017 (19.3)	6,364 (26.5)	6,494 (17.9)	9,160 (17.0)	3,939 (8.6)	12,889 (25.1)	5,189 (30.4)	10,323 (13.2)	1,165 (11.3)	3,626 (31.4)	6,904 (51.2)
975	975	22,370 (19.6)	6,364 (26.5)	6,675 (18.4)	9,332 (17.3)	3,939 (8.6)	13,061 (25.4)	5,370 (31.4)	10,676 (13.7)	1,165 (11.3)	3,626 (31.4)	6,904 (51.2)
976	976	22,542 (19.7)	6,364 (26.5)	6,675 (18.4)	9,504 (17.6)	3,939 (8.6)	13,234 (25.8)	5,370 (31.4)	10,848 (13.9)	1,165 (11.3)	3,626 (31.4)	6,904 (51.2)
977	977	22,542 (19.7)	6,364 (26.5)	6,675 (18.4)	9,504 (17.6)	3,939 (8.6)	13,234 (25.8)	5,370 (31.4)	10,848 (13.9)	1,165 (11.3)	3,626 (31.4)	6,904 (51.2)
978	978	22,715 (19.9)	6,364 (26.5)	6,675 (18.4)	9,676 (17.9)	3,939 (8.6)	13,406 (26.1)	5,370 (31.4)	10,848 (13.9)	1,337 (13.0)	3,626 (31.4)	6,904 (51.2)
979	979	22,715 (19.9)	6,364 (26.5)	6,675 (18.4)	9,676 (17.9)	3,939 (8.6)	13,406 (26.1)	5,370 (31.4)	10,848 (13.9)	1,337 (13.0)	3,626 (31.4)	6,904 (51.2)
980	989	25,042 (21.9)	6,905 (28.8)	7,920 (21.8)	10,217 (18.9)	4,399 (9.6)	14,541 (28.3)	6,103 (35.7)	11,842 (15.1)	1,512 (14.7)	4,019 (34.8)	7,497 (55.6)
990	999	25,941 (22.7)	7,108 (29.6)	8,101 (22.3)	10,733 (19.9)	4,491 (9.8)	15,167 (29.5)	6,283 (36.8)	12,450 (15.9)	1,622 (15.7)	4,200 (36.4)	7,497 (55.6)
1000	1009	28,358 (24.8)	7,566 (31.6)	8,589 (23.6)	12,203 (22.6)	5,283 (11.5)	16,595 (32.3)	6,479 (37.9)	13,784 (17.6)	1,715 (16.6)	4,490 (38.9)	8,197 (60.7)
1010	1019	28,993 (25.4)	7,566 (31.6)	8,879 (24.4)	12,547 (23.2)	5,376 (11.7)	17,137 (33.4)	6,479 (37.9)	14,247 (18.2)	1,715 (16.6)	4,662 (40.4)	8,197 (60.7)
1020	1029	29,269 (25.6)	7,750 (32.3)	8,972 (24.7)	12,547 (23.2)	5,653 (12.3)	17,137 (33.4)	6,479 (37.9)	14,523 (18.6)	1,715 (16.6)	4,662 (40.4)	8,197 (60.7)
1030	1039	31,083 (27.2)	8,154 (34.0)	9,625 (26.5)	13,305 (24.6)	6,170 (13.4)	18,072 (35.2)	6,841 (40.1)	15,916 (20.4)	1,715 (16.6)	4,662 (40.4)	8,378 (62.1)
1040	1049	31,846 (27.8)	8,264 (34.5)	10,277 (28.3)	13,305 (24.6)	6,263 (13.6)	18,380 (35.8)	7,203 (42.2)	16,317 (20.9)	1,715 (16.6)	4,662 (40.4)	8,740 (64.8)
1050	1059	32,944 (28.8)	8,264 (34.5)	11,203 (30.8)	13,477 (25.0)	6,449 (14.1)	18,750 (36.5)	7,746 (45.4)	17,053 (21.8)	1,715 (16.6)	4,662 (40.4)	9,101 (67.4)
1060	1069	34,351 (30.0)	8,890 (37.1)	11,203 (30.8)	14,259 (26.4)	6,873 (15.0)	19,536 (38.0)	7,942 (46.5)	17,580 (22.5)	1,715 (16.6)	5,098 (44.2)	9,303 (68.9)
1070	1079	34,855 (30.5)	9,000 (37.5)	11,400 (31.4)	14,455 (26.8)	6,873 (15.0)	19,844 (38.6)	8,138 (47.7)	17,691 (22.6)	1,715 (16.6)	5,098 (44.2)	9,697 (71.9)
1080	1089	35,317 (30.9)	9,092 (37.9)	11,598 (31.9)	14,627 (27.1)	6,965 (15.2)	20,214 (39.3)	8,138 (47.7)	17,889 (22.9)	1,887 (18.3)	5,189 (45.0)	9,697 (71.9)
1090	1099	35,668 (31.2)	9,202 (38.4)	11,598 (31.9)	14,868 (27.5)	7,206 (15.7)	20,324 (39.6)	8,138 (47.7)	18,240 (23.3)	1,887 (18.3)	5,189 (45.0)	9,697 (71.9)
1100	1199	43,294 (37.9)	10,717 (44.7)	13,815 (38.0)	18,762 (34.7)	10,054 (21.9)	23,435 (45.6)	9,805 (57.4)	23,848 (30.5)	2,485 (24.1)	5,946 (51.5)	10,268 (76.1)
1200	1299	53,432 (46.7)	12,399 (51.7)	16,622 (45.7)	24,410 (45.2)	15,354 (33.5)	27,555 (53.6)	10,522 (61.6)	31,773 (40.6)	3,064 (29.7)	7,081 (61.4)	10,673 (79.1)
1300	1399	63,370 (55.4)	14,258 (59.5)	19,337 (53.2)	29,775 (55.1)	19,288 (42.0)	31,883 (62.1)	12,199 (71.4)	39,608 (50.7)	3,810 (36.9)	7,683 (66.6)	11,428 (84.7)
1400	1499	69,390 (60.7)	15,471 (64.5)	21,121 (58.1)	32,798 (60.7)	22,251 (48.5)	33,974 (66.1)	13,164 (77.1)	44,531 (57.0)	4,631 (44.9)	7,775 (67.4)	11,613 (86.1)
1500		114,358 (100.0)	23,981 (100.0)	36,362 (100.0)	54,015 (100.0)	45,897 (100.0)	51,383 (100.0)	17,078 (100.0)	78,172 (100.0)	10,317 (100.0)	11,535 (100.0)	13,494 (100.0)

月時間平均賃金額	228,696	217,570	231,310	262,140	211,932	189,255	176,395	240,008	277,835	209,596	145,181
月一人あたり労働時間数	1,488	1,454	1,507	1,679	1,393	1,262	1,065	1,528	1,726	1,439	1,146
第1.20分位数	150	143	151	156	146	144	166	155	158	137	124
第1.10分位数	930	928	947	947	930	928	982	950	950	930	918
第1.4分位数	1,010	930	1,060	1,000	950	930	982	960	969	940	930
第1.4分位数	1,337	969	1,030	1,218	970	950	1,033	1,130	1,228	960	930
四分位差係数	0.2879	1,272	1,351	1,517	1,248	1,111	1,068	1,391	1,535	1,173	965
【上段】		0.3050	0.2984	0.2737	0.2770	0.2278	0.0168	0.2539	0.2885	0.3437	0.1038
【下段】											
累積労働者数											
累積構成比											

04年
 総括表(2) (産業・就業形態別の賃金階級別、性別年齢別表)
 産業：E・製造業
 就業形態：(全て)
 産別適用除外を含む全労働者

時間当り所定内賃金額 (3年当を除く)	合計		男						女					
	男性計	女性計	17歳以下	18~19歳	20~54歳	55~59歳	60~64歳	65歳以上	17歳以下	18~19歳	20~54歳	55~59歳	60~64歳	65歳以上
計	114,358	74,478	668	54,771	6,198	6,515	6,326	39,880	172	23,401	4,119	5,020	7,168	
円	1,156	185			92	93	971	308		110	110		553	
917	(1.0)	(0.2)			(1.4)	(1.5)	(2.4)	(1.3)		(2.7)	(2.7)		(7.7)	
918	(1.1)	(0.4)			92	185	308	110		308	110		553	
919	(1.1)	(0.4)			(1.4)	(2.9)	(2.4)	(1.3)		(1.3)	(2.7)		(7.7)	
920	(1.1)	(0.4)			92	185	308	110		308	110		553	
921	(1.1)	(0.4)			(1.4)	(2.9)	(2.4)	(1.3)		(1.3)	(2.7)		(7.7)	
922	(1.1)	(0.4)			92	185	308	110		308	110		553	
923	(1.1)	(0.4)			(1.4)	(2.9)	(2.4)	(1.3)		(1.3)	(2.7)		(7.7)	
924	(1.1)	(0.4)			92	185	308	110		308	110		553	
925	(1.1)	(0.4)			(1.4)	(2.9)	(2.4)	(1.3)		(1.3)	(2.7)		(7.7)	
926	(1.1)	(0.4)			92	185	308	110		308	110		553	
927	(1.1)	(0.4)			(1.4)	(2.9)	(2.4)	(1.3)		(1.3)	(2.7)		(7.7)	
928	(2.3)	451			175	185	2,135	2,135		1,230	110	241	553	
929	(2.3)	(0.6)			(0.3)	(2.9)	(5.4)	(5.4)		(5.3)	(2.7)	(4.8)	(7.7)	
930	(6.9)	1,228			358	778	6,707	6,707		2,416	285	1,026	2,980	
931	(6.9)	(1.6)			(0.7)	(12.3)	(16.8)	(16.8)		(10.3)	(6.9)	(20.4)	(41.6)	
932	(6.9)	1,228			358	778	6,707	6,707		2,416	285	1,026	2,980	
933	(6.9)	(1.6)			(0.7)	(12.3)	(16.8)	(16.8)		(10.3)	(6.9)	(20.4)	(41.6)	
934	(6.9)	1,228			358	778	6,707	6,707		2,416	285	1,026	2,980	
935	(6.9)	(1.6)			(0.7)	(12.3)	(16.8)	(16.8)		(10.3)	(6.9)	(20.4)	(41.6)	
936	(6.9)	1,228			358	778	6,707	6,707		2,416	285	1,026	2,980	
937	(7.1)	1,402			533	778	6,707	6,707		2,416	285	1,026	2,980	
938	(7.1)	(1.9)			(1.0)	(12.3)	(16.8)	(16.8)		(10.3)	(6.9)	(20.4)	(41.6)	
939	(7.1)	1,402			533	778	6,707	6,707		2,416	285	1,026	2,980	
940	(7.7)	1,586			533	778	6,707	6,707		2,416	285	1,026	2,980	
941	(7.7)	(2.1)			(1.0)	(12.3)	(16.8)	(16.8)		(10.3)	(6.9)	(20.4)	(41.6)	

942	942	8,753 (7.7)	1,586 (2.1)					533 (1.0)	92 (1.4)	961 (15.2)	7,167 (18.0)				2,527 (10.8)	285 (6.9)	1,200 (23.9)	3,154 (44.0)
943	943	8,936 (7.8)	1,586 (2.1)					533 (1.0)	92 (1.4)	961 (15.2)	7,350 (18.4)				2,710 (11.6)	285 (6.9)	1,200 (23.9)	3,154 (44.0)
944	944	8,936 (7.8)	1,586 (2.1)					533 (1.0)	92 (1.4)	961 (15.2)	7,350 (18.4)				2,710 (11.6)	285 (6.9)	1,200 (23.9)	3,154 (44.0)
945	945	8,936 (7.8)	1,586 (2.1)					533 (1.0)	92 (1.4)	961 (15.2)	7,350 (18.4)				2,710 (11.6)	285 (6.9)	1,200 (23.9)	3,154 (44.0)
946	946	9,177 (8.0)	1,827 (2.5)					774 (1.4)	92 (1.4)	1,202 (19.0)	7,591 (19.0)				2,710 (11.6)	285 (6.9)	1,200 (23.9)	3,396 (47.4)
947	947	9,660 (8.4)	2,068 (2.8)					774 (1.4)	92 (1.4)	1,202 (19.0)	7,591 (19.0)				2,710 (11.6)	285 (6.9)	1,200 (23.9)	3,396 (47.4)
948	948	9,660 (8.4)	2,068 (2.8)					774 (1.4)	92 (1.4)	1,202 (19.0)	7,591 (19.0)				2,710 (11.6)	285 (6.9)	1,200 (23.9)	3,396 (47.4)
949	949	9,660 (8.4)	2,068 (2.8)					774 (1.4)	92 (1.4)	1,202 (19.0)	7,591 (19.0)				2,710 (11.6)	285 (6.9)	1,200 (23.9)	3,396 (47.4)
950	950	12,534 (11.0)	2,688 (3.6)					1,302 (2.4)	183 (2.8)	1,202 (19.0)	9,939 (24.7)				3,447 (14.7)	570 (13.8)	1,793 (35.7)	4,035 (56.3)
951	951	12,626 (11.0)	2,688 (3.6)					1,302 (2.4)	183 (2.8)	1,202 (19.0)	9,939 (24.9)				3,540 (15.1)	570 (13.8)	1,793 (35.7)	4,035 (56.3)
952	952	12,868 (11.3)	2,929 (3.9)					1,302 (2.4)	183 (2.8)	1,443 (22.8)	9,939 (24.9)				3,540 (15.1)	570 (13.8)	1,793 (35.7)	4,035 (56.3)
953	953	13,556 (11.9)	3,273 (4.4)					1,302 (2.4)	356 (5.5)	1,616 (25.5)	10,455 (26.2)				3,884 (16.6)	570 (13.8)	1,793 (35.7)	4,207 (58.7)
954	954	13,728 (12.0)	3,273 (4.4)					1,302 (2.4)	356 (5.5)	1,616 (25.5)	10,455 (26.2)				3,884 (16.6)	570 (13.8)	1,793 (35.7)	4,207 (58.7)
955	955	13,728 (12.0)	3,273 (4.4)					1,474 (2.7)	356 (5.5)	1,616 (25.5)	11,064 (27.7)				4,149 (17.7)	570 (13.8)	1,965 (39.2)	4,379 (61.1)
956	956	14,510 (12.7)	3,445 (4.6)					1,474 (2.7)	356 (5.5)	1,616 (25.5)	11,753 (29.5)				4,321 (18.5)	570 (13.8)	1,965 (39.2)	4,896 (68.3)
957	957	15,198 (13.3)	3,617 (4.6)					1,646 (3.0)	356 (5.5)	1,616 (25.5)	11,753 (29.5)				4,321 (18.5)	570 (13.8)	1,965 (39.2)	4,896 (68.3)
958	958	15,370 (13.4)	3,617 (4.9)					1,646 (3.0)	356 (5.5)	1,616 (25.5)	11,753 (29.5)				4,321 (18.5)	570 (13.8)	1,965 (39.2)	4,896 (68.3)
959	959	15,370 (13.4)	3,617 (4.9)					1,646 (3.0)	356 (5.5)	1,726 (27.3)	15,169 (38.0)				6,730 (28.8)	963 (23.4)	2,582 (51.4)	4,896 (68.3)
960	960	18,897 (16.5)	3,728 (5.0)					1,646 (3.0)	356 (5.5)	1,726 (27.3)	15,779 (39.6)				7,167 (30.6)	963 (23.4)	2,754 (54.9)	4,896 (68.3)
961	961	19,507 (17.1)	3,728 (5.0)					1,646 (3.0)	356 (5.5)	1,726 (27.3)	15,779 (39.6)				7,167 (30.6)	963 (23.4)	2,754 (54.9)	4,896 (68.3)
962	962	19,507 (17.1)	3,728 (5.0)					1,646 (3.0)	356 (5.5)	1,726 (27.3)	15,779 (39.6)				7,167 (30.6)	963 (23.4)	2,754 (54.9)	4,896 (68.3)
963	963	19,507 (17.1)	3,728 (5.0)					1,646 (3.0)	356 (5.5)	1,726 (27.3)	15,779 (39.6)				7,167 (30.6)	963 (23.4)	2,754 (54.9)	4,896 (68.3)
964	964	20,711 (18.1)	3,728 (5.0)					1,646 (3.0)	356 (5.5)	1,726 (27.3)	16,984 (42.6)				7,683 (32.8)	963 (23.4)	3,270 (65.1)	5,068 (70.7)
965	965	20,804 (18.2)	3,728 (5.0)					1,646 (3.0)	356 (5.5)	1,726 (27.3)	17,076 (42.8)				7,776 (33.2)	963 (23.4)	3,270 (65.1)	5,068 (70.7)
966	966	21,269 (18.6)	4,007 (5.4)					1,925 (3.5)	356 (5.5)	1,726 (27.3)	17,262 (43.3)				7,962 (34.0)	963 (23.4)	3,270 (65.1)	5,068 (70.7)
967	967	21,269 (18.6)	4,007 (5.4)					1,925 (3.5)	356 (5.5)	1,726 (27.3)	17,262 (43.3)				7,962 (34.0)	963 (23.4)	3,270 (65.1)	5,068 (70.7)
968	968	21,490 (18.8)	4,007 (5.4)					1,925 (3.5)	356 (5.5)	1,726 (27.3)	17,483 (43.8)				7,962 (34.0)	1,073 (26.1)	3,270 (65.1)	5,178 (72.2)
969	969	21,490 (18.8)	4,007 (5.4)					1,925 (3.5)	356 (5.5)	1,726 (27.3)	17,483 (43.8)				7,962 (34.0)	1,073 (26.1)	3,270 (65.1)	5,178 (72.2)

平均賃金	228,696	271,718	179,336	274,946	339,203	267,317	191,947	148,350	164,976	158,236	185,498	134,679	103,907
月一人当たり労働時間数	1,488	1,685	1,086	1,692	2,049	1,676	1,337	1,122	982	1,145	1,240	1,131	978
第1位	150	162	166	163	167	156	146	127	168	134	145	112	105
第2位	930	960	1,033	1,004	1,143	953	930	928	982	928	930	930	900
第3位	950	1,043	1,033	1,130	1,329	991	930	930	982	930	950	930	930
第4位	1,010	1,258	1,033	1,301	1,528	1,146	953	953	982	960	969	950	930
係数	1,337	1,582	1,068	1,592	1,980	1,500	1,072	985	982	1,035	1,200	960	950
係数	0.2879	0.2320	0.0511	0.2058	0.1962	0.2736	0.2554	0.1336	0.0004	0.1317	0.2042	0.0576	0.0265

【上段】 累積労働率数
【下段】 累積構成比

04年 産別・就業形態別の資金階級別、規模別、地域別、年齢別、年齢別表 (1) 産業 - 就業形態別の資金階級別、規模別、地域別、年齢別表 (1) 産業 - 就業形態 (全て) + 卸売業、小売業 就業形態: (全て)

時間当り所定内賃金額 (3手当を除く)	合計		規模別				地域別				年齢別				
			1~9人	10~29人	30~99人	阪神	播磨	県北・淡路	17歳以下	18~19歳	20~54歳	55~59歳	60~64歳	65歳以上	
	計	円													
917	193,132	89,092	104,040	76	122,020	54,628	16,484	7,213	1,925	137,147	18,699	13,183	14,965		
918	2,835	1,858	976	1,436	1,436	733	666	666	666	1,607	206	206	1,022		
919	2,835	1,858	976	1,436	1,436	733	666	666	666	1,607	206	206	1,022		
920	2,835	1,858	976	1,436	1,436	733	666	666	666	1,607	206	206	1,022		
921	2,957	1,980	976	1,436	1,436	855	666	666	666	1,607	206	206	1,144		
922	2,957	1,980	976	1,436	1,436	855	666	666	666	1,607	206	206	1,144		
923	2,957	1,980	976	1,436	1,436	855	666	666	666	1,607	206	206	1,144		
924	2,957	1,980	976	1,436	1,436	855	666	666	666	1,607	206	206	1,144		
925	2,957	1,980	976	1,436	1,436	855	666	666	666	1,607	206	206	1,144		
926	2,957	1,980	976	1,436	1,436	855	666	666	666	1,607	206	206	1,144		
927	13,301	3,838	9,463	4,491	7,479	1,331	928	928	313	8,961	1,060	622	1,417		
928	13,301	3,838	9,463	4,491	7,479	1,331	928	928	313	8,961	1,060	622	1,417		
929	33,800	8,768	25,032	22,035	9,851	1,914	1,914	3,227	22,733	2,813	1,782	1,782	2,243		
930	33,922	8,890	25,032	22,035	9,973	1,914	1,914	3,227	22,733	2,813	1,782	1,782	2,243		
931	33,922	8,890	25,032	22,035	9,973	1,914	1,914	3,227	22,733	2,813	1,782	1,782	2,243		
932	34,530	9,013	25,518	22,521	10,096	1,914	1,914	3,227	23,341	2,813	1,782	1,782	2,243		
933	34,530	9,013	25,518	22,521	10,096	1,914	1,914	3,227	23,341	2,813	1,782	1,782	2,243		
934	35,005	9,326	25,680	22,996	10,096	1,914	1,914	3,227	23,341	2,813	1,782	1,782	2,243		
935	35,250	9,570	25,680	22,996	10,340	1,914	1,914	3,227	23,625	2,970	1,939	1,939	2,443		
936	35,250	9,570	25,680	22,996	10,340	1,914	1,914	3,227	23,625	2,970	1,939	1,939	2,443		
937	35,796	9,814	25,982	22,996	10,886	1,914	1,914	3,227	23,927	2,970	2,061	2,061	2,443		
938	35,796	9,814	25,982	22,996	10,886	1,914	1,914	3,227	23,927	2,970	2,061	2,061	2,443		
939	39,140	12,186	26,954	25,063	11,497	1,914	1,914	3,227	25,602	3,411	2,628	2,628	2,987		
940	39,286	12,343	26,954	25,220	11,497	1,914	1,914	3,227	25,759	3,411	2,628	2,628	2,987		
941	39,286	12,343	26,954	25,220	11,497	1,914	1,914	3,227	25,759	3,411	2,628	2,628	2,987		

942	942	39,296	12,343	26,954		25,220	11,497	2,579	1,123	3,389	25,759	3,411	2,628	2,987
		(20.3)	(13.9)	(25.9)		(20.7)	(21.0)	(15.6)	(58.3)	(47.0)	(18.8)	(18.2)	(19.9)	(20.0)
943	943	39,296	12,343	26,954		25,220	11,497	2,579	1,123	3,389	25,759	3,411	2,628	2,987
		(20.3)	(13.9)	(25.9)		(20.7)	(21.0)	(15.6)	(58.3)	(47.0)	(18.8)	(18.2)	(19.9)	(20.0)
944	944	39,296	12,343	26,954		25,220	11,497	2,579	1,123	3,389	25,759	3,411	2,628	2,987
		(20.3)	(13.9)	(25.9)		(20.7)	(21.0)	(15.6)	(58.3)	(47.0)	(18.8)	(18.2)	(19.9)	(20.0)
945	945	39,737	12,622	27,116		25,538	11,619	2,579	1,123	3,389	26,077	3,411	2,628	3,109
		(20.6)	(14.2)	(26.1)		(20.9)	(21.3)	(15.6)	(58.3)	(47.0)	(19.0)	(18.2)	(19.9)	(20.8)
946	946	42,352	15,237	27,116		26,321	13,452	2,579	1,123	3,389	28,258	3,724	2,628	3,231
		(21.9)	(17.1)	(26.1)		(21.6)	(24.6)	(15.6)	(58.3)	(47.0)	(20.6)	(19.9)	(19.9)	(21.6)
947	947	42,352	15,237	27,116		26,321	13,452	2,579	1,123	3,389	28,258	3,724	2,628	3,231
		(21.9)	(17.1)	(26.1)		(21.6)	(24.6)	(15.6)	(58.3)	(47.0)	(20.6)	(19.9)	(19.9)	(21.6)
948	948	42,654	15,237	27,418		26,321	13,754	2,579	1,123	3,389	28,560	3,724	2,628	3,231
		(22.1)	(17.1)	(26.4)		(21.6)	(25.2)	(15.6)	(58.3)	(47.0)	(20.8)	(19.9)	(19.9)	(21.6)
949	949	42,654	15,237	27,418		26,321	13,754	2,579	1,123	3,389	28,560	3,724	2,628	3,231
		(22.1)	(17.1)	(26.4)		(21.6)	(25.2)	(15.6)	(58.3)	(47.0)	(20.8)	(19.9)	(19.9)	(21.6)
950	950	49,457	18,392	31,066		30,791	15,422	3,244	1,279	3,551	33,494	4,041	2,941	4,151
		(25.6)	(20.6)	(29.9)		(25.2)	(28.2)	(19.7)	(66.4)	(49.2)	(24.4)	(21.6)	(22.3)	(27.7)
951	951	49,457	18,392	31,066		30,791	15,422	3,244	1,279	3,551	33,494	4,041	2,941	4,151
		(25.6)	(20.6)	(29.9)		(25.2)	(28.2)	(19.7)	(66.4)	(49.2)	(24.4)	(21.6)	(22.3)	(27.7)
952	952	50,227	18,514	31,714		31,439	15,545	3,244	1,279	3,551	34,264	4,041	2,941	4,151
		(26.0)	(20.8)	(30.5)		(25.8)	(28.5)	(19.7)	(66.4)	(49.2)	(25.0)	(21.6)	(22.3)	(27.7)
953	953	50,227	18,514	31,714		31,439	15,545	3,244	1,279	3,551	34,264	4,041	2,941	4,151
		(26.0)	(20.8)	(30.5)		(25.8)	(28.5)	(19.7)	(66.4)	(49.2)	(25.0)	(21.6)	(22.3)	(27.7)
954	954	50,551	18,514	32,038		31,762	15,545	3,244	1,279	3,551	34,588	4,041	2,941	4,151
		(26.2)	(20.8)	(30.8)		(26.0)	(28.5)	(19.7)	(66.4)	(49.2)	(25.2)	(21.6)	(22.3)	(27.7)
955	955	51,953	18,758	33,195		32,086	15,789	4,078	1,401	3,673	35,412	4,124	3,108	4,235
		(26.9)	(21.1)	(31.9)		(26.3)	(28.9)	(24.7)	(72.8)	(50.9)	(25.8)	(22.1)	(23.6)	(28.3)
956	956	51,953	18,758	33,195		32,086	15,789	4,078	1,401	3,673	35,412	4,124	3,108	4,235
		(26.9)	(21.1)	(31.9)		(26.3)	(28.9)	(24.7)	(72.8)	(50.9)	(25.8)	(22.1)	(23.6)	(28.3)
957	957	52,115	18,758	33,357		32,248	15,789	4,078	1,401	3,673	35,412	4,124	3,108	4,235
		(27.0)	(21.1)	(32.1)		(26.4)	(28.9)	(24.7)	(72.8)	(50.9)	(25.9)	(22.1)	(23.6)	(28.3)
958	958	52,266	18,758	33,508		32,248	15,940	4,078	1,401	3,673	35,563	4,124	3,108	4,235
		(27.1)	(21.1)	(32.2)		(26.4)	(29.2)	(24.7)	(72.8)	(50.9)	(25.9)	(22.1)	(23.6)	(28.3)
959	959	52,266	18,758	33,508		32,248	15,940	4,078	1,401	3,673	35,563	4,124	3,108	4,235
		(27.1)	(21.1)	(32.2)		(26.4)	(29.2)	(24.7)	(72.8)	(50.9)	(25.9)	(22.1)	(23.6)	(28.3)
960	960	54,686	19,795	34,891		33,522	16,335	4,828	1,401	3,673	37,331	4,526	3,358	4,396
		(28.3)	(22.2)	(33.5)		(27.5)	(29.9)	(29.3)	(72.8)	(50.9)	(27.2)	(24.2)	(25.5)	(29.4)
961	961	54,686	19,795	34,891		33,522	16,335	4,828	1,401	3,673	37,331	4,526	3,358	4,396
		(28.3)	(22.2)	(33.5)		(27.5)	(29.9)	(29.3)	(72.8)	(50.9)	(27.2)	(24.2)	(25.5)	(29.4)
962	962	54,686	19,795	34,891		33,522	16,335	4,828	1,401	3,673	37,331	4,526	3,358	4,396
		(28.3)	(22.2)	(33.5)		(27.5)	(29.9)	(29.3)	(72.8)	(50.9)	(27.2)	(24.2)	(25.5)	(29.4)
963	963	54,930	20,039	34,891		33,522	16,580	4,828	1,401	3,673	37,331	4,526	3,358	4,396
		(28.4)	(22.5)	(33.5)		(27.5)	(30.4)	(29.3)	(72.8)	(50.9)	(27.2)	(24.2)	(25.5)	(29.4)
964	964	55,013	20,039	34,974		33,522	16,580	4,912	1,401	3,673	37,453	4,649	3,441	4,396
		(28.5)	(22.5)	(33.6)		(27.5)	(30.4)	(29.8)	(72.8)	(50.9)	(27.3)	(24.9)	(26.1)	(29.4)
965	965	55,013	20,039	34,974		33,522	16,580	4,912	1,401	3,673	37,453	4,649	3,441	4,396
		(28.5)	(22.5)	(33.6)		(27.5)	(30.4)	(29.8)	(72.8)	(50.9)	(27.3)	(24.9)	(26.1)	(29.4)
966	966	55,013	20,039	34,974		33,522	16,580	4,912	1,401	3,673	37,453	4,649	3,441	4,396
		(28.5)	(22.5)	(33.6)		(27.5)	(30.4)	(29.8)	(72.8)	(50.9)	(27.3)	(24.9)	(26.1)	(29.4)
967	967	55,013	20,039	34,974		33,522	16,580	4,912	1,401	3,673	37,453	4,649	3,441	4,396
		(28.5)	(22.5)	(33.6)		(27.5)	(30.4)	(29.8)	(72.8)	(50.9)	(27.3)	(24.9)	(26.1)	(29.4)
968	968	55,013	20,039	34,974		33,522	16,580	4,912	1,401	3,673	37,453	4,649	3,441	4,396
		(28.5)	(22.5)	(33.6)		(27.5)	(30.4)	(29.8)	(72.8)	(50.9)	(27.3)	(24.9)	(26.1)	(29.4)
969	969	55,013	20,039	34,974		33,522	16,580	4,912	1,401	3,673	37,453	4,649	3,441	4,396
		(28.5)	(22.5)	(33.6)		(27.5)	(30.4)	(29.8)	(72.8)	(50.9)	(27.3)	(24.9)	(26.1)	(29.4)

970	970	55,860	20,328	35,533		33,846	16,853	5,161	3,673	38,015	4,649	3,563	4,396
		(28.9)	(22.8)	(34.2)		(27.7)	(30.9)	(31.3)	(50.9)	(27.7)	(24.9)	(27.0)	(29.4)
971	971	56,022	20,328	35,694		34,008	16,853	5,161	3,673	38,177	4,649	3,563	4,396
		(29.0)	(22.8)	(34.3)		(27.9)	(30.9)	(31.3)	(50.9)	(27.8)	(24.9)	(27.0)	(29.4)
972	972	56,022	20,328	35,694		34,008	16,853	5,161	3,673	38,177	4,649	3,563	4,396
		(29.0)	(22.8)	(34.3)		(27.9)	(30.9)	(31.3)	(50.9)	(27.8)	(24.9)	(27.0)	(29.4)
973	973	56,173	20,328	35,845		34,008	17,004	5,161	3,673	38,177	4,649	3,563	4,547
		(29.1)	(22.8)	(34.5)		(27.9)	(31.1)	(31.3)	(50.9)	(27.8)	(24.9)	(27.0)	(30.4)
974	974	56,324	20,328	35,997		34,008	17,155	5,161	3,673	38,177	4,649	3,563	4,699
		(29.2)	(22.8)	(34.6)		(27.9)	(31.4)	(31.3)	(50.9)	(27.8)	(24.9)	(27.0)	(31.4)
975	975	56,324	20,328	35,997		34,008	17,155	5,161	3,673	38,177	4,649	3,563	4,699
		(29.2)	(22.8)	(34.6)		(27.9)	(31.4)	(31.3)	(50.9)	(27.8)	(24.9)	(27.0)	(31.4)
976	976	56,598	20,450	36,148		34,008	17,428	5,161	3,673	38,300	4,649	3,563	4,850
		(29.3)	(23.0)	(34.7)		(27.9)	(31.9)	(31.3)	(50.9)	(27.9)	(24.9)	(27.0)	(32.4)
977	977	56,598	20,450	36,148		34,008	17,428	5,161	3,673	38,300	4,649	3,563	4,850
		(29.3)	(23.0)	(34.7)		(27.9)	(31.9)	(31.3)	(50.9)	(27.9)	(24.9)	(27.0)	(32.4)
978	978	56,954	20,572	36,382		34,008	17,701	5,245	3,673	38,505	4,649	3,563	5,001
		(29.5)	(23.1)	(35.0)		(27.9)	(32.4)	(31.8)	(50.9)	(28.1)	(24.9)	(27.0)	(33.4)
979	979	57,120	20,738	36,382		34,008	17,701	5,411	3,673	38,671	4,649	3,563	5,001
		(29.6)	(23.3)	(35.0)		(27.9)	(32.4)	(32.8)	(50.9)	(28.2)	(24.9)	(27.0)	(33.4)
980	989	59,625	22,602	37,024		35,584	18,463	5,578	3,986	40,222	4,771	3,842	5,001
		(30.9)	(25.4)	(35.6)		(29.2)	(33.8)	(33.8)	(55.3)	(29.3)	(25.5)	(29.1)	(33.4)
990	999	60,962	23,369	37,593		36,227	19,074	5,661	4,231	40,947	4,933	3,925	5,123
		(31.6)	(26.2)	(36.1)		(29.7)	(34.9)	(34.3)	(58.7)	(29.9)	(26.4)	(29.8)	(34.2)
1000	1009	67,088	28,127	38,961		39,709	21,302	6,077	4,711	44,293	5,530	4,366	6,262
		(34.7)	(31.6)	(37.4)		(32.5)	(39.0)	(36.9)	(65.3)	(32.3)	(29.6)	(33.1)	(41.8)
1010	1019	67,730	28,284	39,447		40,351	21,302	6,077	4,711	44,936	5,530	4,366	6,262
		(35.1)	(31.7)	(37.9)		(33.1)	(39.0)	(36.9)	(65.3)	(32.8)	(29.6)	(33.1)	(41.8)
1020	1029	69,500	28,963	40,537		41,150	22,273	6,077	4,711	46,002	5,530	4,639	6,692
		(36.0)	(32.5)	(39.0)		(33.7)	(40.8)	(36.9)	(65.3)	(33.5)	(29.6)	(35.2)	(44.7)
1030	1039	71,266	29,931	41,334		41,625	23,064	6,577	4,794	47,206	5,530	4,639	7,171
		(36.9)	(33.6)	(39.7)		(34.1)	(42.2)	(39.9)	(66.5)	(34.4)	(29.6)	(35.2)	(47.9)
1040	1049	72,176	30,367	41,809		42,262	23,337	6,577	4,794	47,837	5,530	4,796	7,293
		(37.4)	(34.1)	(40.2)		(34.6)	(42.7)	(39.9)	(66.5)	(34.9)	(29.6)	(36.4)	(48.7)
1050	1059	75,140	31,995	43,145		44,006	24,308	6,827	4,794	50,103	5,837	5,187	7,293
		(38.9)	(35.9)	(41.5)		(36.1)	(44.5)	(41.4)	(66.5)	(36.5)	(31.2)	(39.3)	(48.7)
1060	1069	76,150	32,274	43,876		44,810	24,430	6,910	4,794	50,828	6,122	5,187	7,293
		(39.4)	(36.2)	(42.2)		(36.7)	(44.7)	(41.9)	(66.5)	(37.1)	(32.7)	(39.3)	(48.7)
1070	1079	77,480	32,744	44,736		45,603	24,883	6,993	4,794	51,611	6,205	5,338	7,606
		(40.1)	(36.8)	(43.0)		(37.4)	(45.5)	(42.4)	(66.5)	(37.6)	(33.2)	(40.5)	(50.8)
1080	1089	79,543	33,590	45,953		47,050	25,249	7,243	5,928	52,335	6,205	5,338	7,811
		(41.2)	(37.7)	(44.2)		(38.6)	(46.2)	(43.9)	(82.2)	(38.2)	(33.2)	(40.5)	(52.2)
1090	1099	81,183	33,868	47,315		48,016	25,674	7,493	5,928	53,569	6,362	5,505	7,895
		(42.0)	(38.0)	(45.5)		(39.4)	(47.0)	(45.5)	(82.2)	(39.1)	(34.0)	(41.8)	(52.8)
1100	1109	95,999	38,268	56,731		58,257	28,499	9,243	7,213	62,315	7,996	6,848	9,702
		(49.7)	(44.1)	(54.5)		(47.7)	(52.2)	(56.1)	(100.0)	(45.4)	(42.8)	(51.9)	(64.8)
1200	1299	107,999	45,826	62,173		65,560	32,446	9,992		71,838	9,242	6,999	10,782
		(51.4)	(45.8)	(59.8)		(53.7)	(59.4)			(52.4)	(49.4)	(53.1)	(72.0)
1300	1399	118,219	52,009	66,211		72,044	34,934	11,241		79,548	9,795	8,354	11,384
		(58.4)	(53.6)	(63.6)		(59.0)	(63.9)	(68.2)		(58.0)	(52.4)	(63.4)	(76.1)
1400	1499	127,952	56,440	71,512		78,570	37,724	11,658		87,999	10,123	9,068	11,623
		(66.3)	(63.4)	(68.7)		(64.4)	(70.7)	(64.4)		(64.2)	(54.1)	(68.8)	(77.7)
1500		193,132	89,092	104,040		122,020	54,628	16,484		137,147	18,699	13,183	14,965
		(100.0)	(100.0)	(100.0)		(100.0)	(100.0)	(100.0)		(100.0)	(100.0)	(100.0)	(100.0)

月 時 間	平 均 時 間	平 均 當 人 當 た り の 時 間 數	金 額	【上段】		【下段】		業績構成比				
				累積労働時数	累積時数	累積労働時数	累積時数	累積労働時数	累積時数			
月	202.616	214.928	192.073	203.883	199.684	202.953	54.526	60.013	210.266	244.194	201.212	169.575
一	1.424	1.467	1.388	1.459	1.359	1.379	947	1,000	1,432	1,702	1,406	1,290
時	133	140	127	130	138	141	58	59	138	140	135	127
分	928	930	928	930	928	928	928	928	928	928	930	930
0	930	933	930	930	928	930	928	928	930	930	930	930
分	950	982	940	950	948	960	930	930	954	985	960	950
分	1,200	1,270	1,130	1,231	1,139	1,154	930	955	1,262	1,300	1,183	1,070
位	0.3142	0.3067	0.3094	0.3226	0.3083	0.2813	0.0216	0.0788	0.3046	0.4124	0.2705	0.2009

04年
 総括表(2) (産業・就業形態別の賃金階級別、性別年齢別表)
 産業：1-卸売業、小売業
 就業形態：(全て)
 産別適用除外を含む全労働者

時間当り所定内賃金額 (9半当を除く)	合計		男						女					
	男性計	女性計	17歳以下	18~19歳	20~54歳	55~59歳	60~64歳	65歳以上	17歳以下	18~19歳	20~54歳	55~59歳	60~64歳	65歳以上
計	193,132	86,166	122	3,326	62,388	7,408	5,012	7,909	1,803	3,887	74,759	11,291	8,171	7,056
917	2,835 (1.5)	568 (0.6)			475 (0.8)		83 (1.7)				1,132 (1.5)		122 (1.5)	1,022 (14.5)
918	2,835 (1.5)	568 (0.6)			475 (0.8)		83 (1.7)				1,132 (1.5)		122 (1.5)	1,022 (14.5)
919	2,835 (1.5)	568 (0.6)			475 (0.8)		83 (1.7)				1,132 (1.5)		122 (1.5)	1,022 (14.5)
920	2,835 (1.5)	568 (0.6)			475 (0.8)		83 (1.7)				1,132 (1.5)		122 (1.5)	1,022 (14.5)
921	2,957 (1.5)	558 (0.6)			475 (0.8)		83 (1.7)				1,132 (1.5)		122 (1.5)	1,144 (16.2)
922	2,957 (1.5)	558 (0.6)			475 (0.8)		83 (1.7)				1,132 (1.5)		122 (1.5)	1,144 (16.2)
923	2,957 (1.5)	558 (0.6)			475 (0.8)		83 (1.7)				1,132 (1.5)		122 (1.5)	1,144 (16.2)
924	2,957 (1.5)	558 (0.6)			475 (0.8)		83 (1.7)				1,132 (1.5)		122 (1.5)	1,144 (16.2)
925	2,957 (1.5)	558 (0.6)			475 (0.8)		83 (1.7)				1,132 (1.5)		122 (1.5)	1,144 (16.2)
926	2,957 (1.5)	558 (0.6)			475 (0.8)		83 (1.7)				1,132 (1.5)		122 (1.5)	1,144 (16.2)
927	2,957 (1.5)	558 (0.6)			475 (0.8)		83 (1.7)				1,132 (1.5)		122 (1.5)	1,144 (16.2)
928	13,301 (6.9)	2,404 (2.8)		302 (9.1)	1,867 (3.0)		83 (1.7)	151 (1.9)	313 (17.4)	626 (16.1)	7,094 (9.5)	1,060 (9.4)	538 (6.6)	1,266 (17.9)
929	13,301 (6.9)	2,404 (2.8)		302 (9.1)	1,867 (3.0)		83 (1.7)	151 (1.9)	313 (17.4)	626 (16.1)	7,094 (9.5)	1,060 (9.4)	538 (6.6)	1,266 (17.9)
930	33,800 (17.5)	6,615 (7.7)		1,189 (35.7)	5,025 (8.1)	166 (2.2)	83 (1.7)	151 (1.9)	1,123 (62.3)	2,038 (52.4)	17,708 (23.7)	2,647 (23.4)	1,699 (20.8)	2,092 (29.7)
931	33,922 (17.6)	6,615 (7.7)		1,189 (35.7)	5,025 (8.1)	166 (2.2)	83 (1.7)	151 (1.9)	1,123 (62.3)	2,038 (52.4)	17,708 (23.7)	2,647 (23.4)	1,699 (20.8)	2,092 (29.7)
932	33,922 (17.6)	6,615 (7.7)		1,189 (35.7)	5,025 (8.1)	166 (2.2)	83 (1.7)	151 (1.9)	1,123 (62.3)	2,038 (52.4)	17,708 (23.7)	2,647 (23.4)	1,699 (20.8)	2,092 (29.7)
933	34,530 (17.9)	6,615 (7.7)		1,189 (35.7)	5,025 (8.1)	166 (2.2)	83 (1.7)	151 (1.9)	1,123 (62.3)	2,038 (52.4)	17,708 (23.7)	2,647 (23.4)	1,699 (20.8)	2,092 (29.7)
934	34,530 (17.9)	6,615 (7.7)		1,189 (35.7)	5,025 (8.1)	166 (2.2)	83 (1.7)	151 (1.9)	1,123 (62.3)	2,038 (52.4)	17,708 (23.7)	2,647 (23.4)	1,699 (20.8)	2,092 (29.7)
935	35,005 (18.1)	6,777 (7.9)		1,189 (35.7)	5,187 (8.3)	166 (2.2)	83 (1.7)	151 (1.9)	1,123 (62.3)	2,038 (52.4)	17,708 (23.7)	2,647 (23.4)	1,699 (20.8)	2,092 (29.7)
936	35,250 (18.3)	6,777 (7.9)		1,189 (35.7)	5,187 (8.3)	166 (2.2)	83 (1.7)	151 (1.9)	1,123 (62.3)	2,038 (52.4)	17,708 (23.7)	2,647 (23.4)	1,699 (20.8)	2,092 (29.7)
937	35,250 (18.3)	6,777 (7.9)		1,189 (35.7)	5,187 (8.3)	166 (2.2)	83 (1.7)	151 (1.9)	1,123 (62.3)	2,038 (52.4)	17,708 (23.7)	2,647 (23.4)	1,699 (20.8)	2,092 (29.7)
938	35,796 (18.5)	6,928 (8.0)		1,189 (35.7)	5,338 (8.6)	166 (2.2)	83 (1.7)	151 (1.9)	1,123 (62.3)	2,038 (52.4)	17,708 (23.7)	2,647 (23.4)	1,699 (20.8)	2,092 (29.7)
939	35,796 (18.5)	6,928 (8.0)		1,189 (35.7)	5,338 (8.6)	166 (2.2)	83 (1.7)	151 (1.9)	1,123 (62.3)	2,038 (52.4)	17,708 (23.7)	2,647 (23.4)	1,699 (20.8)	2,092 (29.7)
940	39,140 (20.3)	8,342 (9.7)		1,351 (40.6)	5,970 (9.6)	288 (3.9)	83 (1.7)	650 (8.2)	1,123 (62.3)	2,038 (52.4)	19,632 (26.3)	3,122 (27.7)	2,545 (31.1)	2,337 (33.1)
941	39,296 (20.3)	8,499 (9.9)		1,351 (40.6)	6,126 (9.8)	288 (3.9)	83 (1.7)	650 (8.2)	1,123 (62.3)	2,038 (52.4)	19,632 (26.3)	3,122 (27.7)	2,545 (31.1)	2,337 (33.1)

942	942	39,296	8,499	1,351	6,126	288	83	650	30,797	1,123	2,038	19,632	3,122	2,545	2,337
		(20.3)	(9.9)	(40.6)	(9.8)	(3.9)	(1.7)	(8.2)	(28.8)	(62.3)	(52.4)	(26.3)	(27.7)	(31.1)	(33.1)
943	943	39,296	8,499	1,351	6,126	288	83	650	30,797	1,123	2,038	19,632	3,122	2,545	2,337
		(20.3)	(9.9)	(40.6)	(9.8)	(3.9)	(1.7)	(8.2)	(28.8)	(62.3)	(52.4)	(26.3)	(27.7)	(31.1)	(33.1)
944	944	39,296	8,499	1,351	6,126	288	83	650	30,797	1,123	2,038	19,632	3,122	2,545	2,337
		(20.3)	(9.9)	(40.6)	(9.8)	(3.9)	(1.7)	(8.2)	(28.8)	(62.3)	(52.4)	(26.3)	(27.7)	(31.1)	(33.1)
945	945	39,737	8,621	1,351	6,126	288	83	772	31,116	1,123	2,038	19,951	3,122	2,545	2,337
		(20.6)	(10.0)	(40.6)	(9.8)	(3.9)	(1.7)	(9.8)	(29.1)	(62.3)	(52.4)	(26.7)	(27.7)	(31.1)	(33.1)
946	946	42,352	8,621	1,351	6,126	288	83	772	33,731	1,123	2,038	22,131	3,435	2,545	2,459
		(21.9)	(10.0)	(40.6)	(9.8)	(3.9)	(1.7)	(9.8)	(31.5)	(62.3)	(52.4)	(29.6)	(30.4)	(31.1)	(34.9)
947	947	42,352	8,621	1,351	6,126	288	83	772	33,731	1,123	2,038	22,131	3,435	2,545	2,459
		(21.9)	(10.0)	(40.6)	(9.8)	(3.9)	(1.7)	(9.8)	(31.5)	(62.3)	(52.4)	(29.6)	(30.4)	(31.1)	(34.9)
948	948	42,654	8,621	1,351	6,126	288	83	772	34,033	1,123	2,038	22,433	3,435	2,545	2,459
		(22.1)	(10.0)	(40.6)	(9.8)	(3.9)	(1.7)	(9.8)	(31.8)	(62.3)	(52.4)	(30.0)	(30.4)	(31.1)	(34.9)
949	949	42,654	8,621	1,351	6,126	288	83	772	34,033	1,123	2,038	22,433	3,435	2,545	2,459
		(22.1)	(10.0)	(40.6)	(9.8)	(3.9)	(1.7)	(9.8)	(31.8)	(62.3)	(52.4)	(30.0)	(30.4)	(31.1)	(34.9)
950	950	49,457	10,469	1,351	7,690	288	245	894	38,989	1,279	2,200	25,804	3,753	2,696	3,257
		(25.6)	(12.1)	(40.6)	(12.3)	(3.9)	(4.9)	(11.3)	(36.4)	(70.9)	(56.6)	(34.5)	(33.0)	(33.0)	(46.2)
951	951	49,457	10,469	1,351	7,690	288	245	894	38,989	1,279	2,200	25,804	3,753	2,696	3,257
		(25.6)	(12.1)	(40.6)	(12.3)	(3.9)	(4.9)	(11.3)	(36.4)	(70.9)	(56.6)	(34.5)	(33.0)	(33.0)	(46.2)
952	952	50,227	10,469	1,351	7,690	288	245	894	39,759	1,279	2,200	26,574	3,753	2,696	3,257
		(26.0)	(12.1)	(40.6)	(12.3)	(3.9)	(4.9)	(11.3)	(37.2)	(70.9)	(56.6)	(35.5)	(33.2)	(33.0)	(46.2)
953	953	50,227	10,469	1,351	7,690	288	245	894	39,759	1,279	2,200	26,574	3,753	2,696	3,257
		(26.0)	(12.1)	(40.6)	(12.3)	(3.9)	(4.9)	(11.3)	(37.2)	(70.9)	(56.6)	(35.5)	(33.2)	(33.0)	(46.2)
954	954	50,551	10,469	1,351	7,690	288	245	894	40,083	1,279	2,200	26,898	3,753	2,696	3,257
		(26.2)	(12.1)	(40.6)	(12.3)	(3.9)	(4.9)	(11.3)	(37.5)	(70.9)	(56.6)	(36.0)	(33.2)	(33.0)	(46.2)
955	955	51,953	10,753	1,473	7,852	288	245	894	41,201	1,401	2,200	27,560	3,836	2,863	3,340
		(26.9)	(12.5)	(44.3)	(12.6)	(3.9)	(4.9)	(11.3)	(38.5)	(77.7)	(56.6)	(36.9)	(34.0)	(35.0)	(47.3)
956	956	51,953	10,753	1,473	7,852	288	245	894	41,201	1,401	2,200	27,560	3,836	2,863	3,340
		(26.9)	(12.5)	(44.3)	(12.6)	(3.9)	(4.9)	(11.3)	(38.5)	(77.7)	(56.6)	(36.9)	(34.0)	(35.0)	(47.3)
957	957	52,115	10,753	1,473	7,852	288	245	894	41,362	1,401	2,200	27,560	3,836	2,863	3,502
		(27.0)	(12.5)	(44.3)	(12.6)	(3.9)	(4.9)	(11.3)	(38.7)	(77.7)	(56.6)	(36.9)	(34.0)	(35.0)	(49.6)
958	958	52,266	10,904	1,473	8,003	288	245	894	41,362	1,401	2,200	27,560	3,836	2,863	3,502
		(27.1)	(12.7)	(44.3)	(12.8)	(3.9)	(4.9)	(11.3)	(38.7)	(77.7)	(56.6)	(36.9)	(34.0)	(35.0)	(49.6)
959	959	52,266	10,904	1,473	8,003	288	245	894	41,362	1,401	2,200	27,560	3,836	2,863	3,502
		(27.1)	(12.7)	(44.3)	(12.8)	(3.9)	(4.9)	(11.3)	(38.7)	(77.7)	(56.6)	(36.9)	(34.0)	(35.0)	(49.6)
960	960	54,686	11,193	1,473	8,292	288	245	894	43,493	1,401	2,200	29,039	4,238	3,112	3,502
		(28.3)	(13.0)	(44.3)	(13.3)	(3.9)	(4.9)	(11.3)	(40.7)	(77.7)	(56.6)	(38.8)	(37.5)	(38.1)	(49.6)
961	961	54,686	11,193	1,473	8,292	288	245	894	43,493	1,401	2,200	29,039	4,238	3,112	3,502
		(28.3)	(13.0)	(44.3)	(13.3)	(3.9)	(4.9)	(11.3)	(40.7)	(77.7)	(56.6)	(38.8)	(37.5)	(38.1)	(49.6)
962	962	54,686	11,193	1,473	8,292	288	245	894	43,493	1,401	2,200	29,039	4,238	3,112	3,502
		(28.3)	(13.0)	(44.3)	(13.3)	(3.9)	(4.9)	(11.3)	(40.7)	(77.7)	(56.6)	(38.8)	(37.5)	(38.1)	(49.6)
963	963	54,930	11,193	1,473	8,292	288	245	894	43,737	1,401	2,200	29,161	4,238	3,112	3,502
		(28.4)	(13.0)	(44.3)	(13.3)	(3.9)	(4.9)	(11.3)	(40.9)	(77.7)	(56.6)	(39.0)	(37.5)	(38.1)	(49.6)
964	964	55,013	11,193	1,473	8,292	288	245	894	43,821	1,401	2,200	29,161	4,238	3,112	3,502
		(28.5)	(13.0)	(44.3)	(13.3)	(3.9)	(4.9)	(11.3)	(41.0)	(77.7)	(56.6)	(39.0)	(37.5)	(38.1)	(49.6)
965	965	55,013	11,193	1,473	8,292	288	245	894	43,821	1,401	2,200	29,161	4,238	3,112	3,502
		(28.5)	(13.0)	(44.3)	(13.3)	(3.9)	(4.9)	(11.3)	(41.0)	(77.7)	(56.6)	(39.0)	(37.5)	(38.1)	(49.6)
966	966	55,013	11,193	1,473	8,292	288	245	894	43,821	1,401	2,200	29,161	4,238	3,112	3,502
		(28.5)	(13.0)	(44.3)	(13.3)	(3.9)	(4.9)	(11.3)	(41.0)	(77.7)	(56.6)	(39.0)	(37.5)	(38.1)	(49.6)
967	967	55,013	11,193	1,473	8,292	288	245	894	43,821	1,401	2,200	29,161	4,238	3,112	3,502
		(28.5)	(13.0)	(44.3)	(13.3)	(3.9)	(4.9)	(11.3)	(41.0)	(77.7)	(56.6)	(39.0)	(37.5)	(38.1)	(49.6)
968	968	55,013	11,193	1,473	8,292	288	245	894	43,821	1,401	2,200	29,161	4,238	3,112	3,502
		(28.5)	(13.0)	(44.3)	(13.3)	(3.9)	(4.9)	(11.3)	(41.0)	(77.7)	(56.6)	(39.0)	(37.5)	(38.1)	(49.6)
969	969	55,013	11,193	1,473	8,292	288	245	894	43,821	1,401	2,200	29,161	4,238	3,112	3,502
		(28.5)	(13.0)	(44.3)	(13.3)	(3.9)	(4.9)	(11.3)	(41.0)	(77.7)	(56.6)	(39.0)	(37.5)	(38.1)	(49.6)

970	970	55,860	11,359	1,473	8,458	288	245	894	44,501	1,563	2,200	29,557	4,360	3,318	3,502
		(28.9)	(13.2)	(44.3)	(13.6)	(3.9)	(4.9)	(11.3)	(41.6)	(86.7)	(56.6)	(39.5)	(38.6)	(40.6)	(49.6)
971	971	56,022	11,359	1,473	8,458	288	245	894	44,663	1,563	2,200	29,719	4,360	3,318	3,502
		(28.0)	(13.2)	(44.3)	(13.6)	(3.9)	(4.9)	(11.3)	(41.8)	(86.7)	(56.6)	(39.8)	(38.6)	(40.6)	(49.6)
972	972	56,022	11,359	1,473	8,458	288	245	894	44,663	1,563	2,200	29,719	4,360	3,318	3,502
		(28.0)	(13.2)	(44.3)	(13.6)	(3.9)	(4.9)	(11.3)	(41.8)	(86.7)	(56.6)	(39.8)	(38.6)	(40.6)	(49.6)
973	973	56,173	11,359	1,473	8,458	288	245	894	44,814	1,563	2,200	29,719	4,360	3,318	3,653
		(29.1)	(13.2)	(44.3)	(13.6)	(3.9)	(4.9)	(11.3)	(41.9)	(86.7)	(56.6)	(39.8)	(38.6)	(40.6)	(51.8)
974	974	56,324	11,359	1,473	8,458	288	245	894	44,965	1,563	2,200	29,719	4,360	3,318	3,804
		(29.2)	(13.2)	(44.3)	(13.6)	(3.9)	(4.9)	(11.3)	(42.0)	(86.7)	(56.6)	(39.8)	(38.6)	(40.6)	(53.9)
975	975	56,324	11,359	1,473	8,458	288	245	894	44,965	1,563	2,200	29,719	4,360	3,318	3,955
		(29.2)	(13.2)	(44.3)	(13.6)	(3.9)	(4.9)	(11.3)	(42.0)	(86.7)	(56.6)	(39.8)	(38.6)	(40.6)	(56.1)
976	976	56,598	11,359	1,473	8,458	288	245	894	45,238	1,563	2,200	29,841	4,360	3,318	3,955
		(29.3)	(13.2)	(44.3)	(13.6)	(3.9)	(4.9)	(11.3)	(42.3)	(86.7)	(56.6)	(39.9)	(38.6)	(40.6)	(56.1)
977	977	56,598	11,359	1,473	8,458	288	245	894	45,238	1,563	2,200	29,841	4,360	3,318	3,955
		(29.3)	(13.2)	(44.3)	(13.6)	(3.9)	(4.9)	(11.3)	(42.3)	(86.7)	(56.6)	(39.9)	(38.6)	(40.6)	(56.1)
978	978	56,954	11,565	1,473	8,664	288	245	894	45,389	1,563	2,200	29,841	4,360	3,318	4,106
		(29.5)	(13.4)	(44.3)	(13.9)	(3.9)	(4.9)	(11.3)	(42.4)	(86.7)	(56.6)	(39.9)	(38.6)	(40.6)	(58.2)
979	979	57,120	11,565	1,473	8,664	288	245	894	45,556	1,563	2,200	30,008	4,360	3,318	4,106
		(29.6)	(13.4)	(44.3)	(13.9)	(3.9)	(4.9)	(11.3)	(42.6)	(86.7)	(56.6)	(40.1)	(38.6)	(40.6)	(58.2)
980	989	59,625	11,687	1,473	8,664	411	245	894	47,938	1,803	2,513	31,559	4,360	3,597	4,106
		(30.9)	(13.6)	(44.3)	(13.9)	(5.5)	(4.9)	(11.3)	(44.8)	(100.0)	(64.7)	(44.8)	(38.6)	(44.0)	(58.2)
990	999	60,962	12,176	1,717	8,786	411	245	1,016	48,786		2,513	32,161	4,522	3,680	4,106
		(31.6)	(14.1)	(51.6)	(14.1)	(5.5)	(4.9)	(12.9)	(45.6)		(64.7)	(43.0)	(40.0)	(45.0)	(58.2)
1,000	1,009	67,088	14,074	2,041	9,227	533	368	1,784	53,014		2,670	35,067	4,997	3,999	4,478
		(34.7)	(16.3)	(61.4)	(14.8)	(7.2)	(7.3)	(22.6)	(49.6)		(68.7)	(46.9)	(44.3)	(48.9)	(63.5)
1,010	1,019	67,730	14,236	2,041	9,389	533	368	1,784	53,494		2,670	35,549	4,997	3,999	4,478
		(35.1)	(16.5)	(61.4)	(15.0)	(7.2)	(7.3)	(22.6)	(50.0)		(68.7)	(47.5)	(44.3)	(48.9)	(63.5)
1,020	1,029	69,500	15,101	2,041	9,707	533	641	2,057	54,399		2,670	36,295	4,997	3,999	4,635
		(36.0)	(17.5)	(61.4)	(15.6)	(7.2)	(12.8)	(26.0)	(50.9)		(68.7)	(48.5)	(44.3)	(48.9)	(65.7)
1,030	1,039	71,266	15,512	2,041	9,873	533	641	2,301	55,754		2,753	37,332	4,997	3,999	4,869
		(36.9)	(18.0)	(61.4)	(15.8)	(7.2)	(12.8)	(29.1)	(52.1)		(70.8)	(49.9)	(44.3)	(48.9)	(69.0)
1,040	1,049	72,176	15,634	2,041	9,873	533	641	2,424	56,542		2,753	37,964	4,997	4,155	4,869
		(37.4)	(18.1)	(61.4)	(15.8)	(7.2)	(12.8)	(30.6)	(52.9)		(70.8)	(50.8)	(44.3)	(50.9)	(69.0)
1,050	1,059	75,140	16,533	2,041	10,773	533	641	2,424	58,607		2,753	39,330	5,305	4,546	4,869
		(38.9)	(19.2)	(61.4)	(17.3)	(7.2)	(12.8)	(30.6)	(54.8)		(70.8)	(52.6)	(47.0)	(55.6)	(69.0)
1,060	1,069	76,150	16,857	2,041	11,097	533	641	2,424	59,293		2,753	39,732	5,589	4,546	4,869
		(39.4)	(19.6)	(61.4)	(17.8)	(7.2)	(12.8)	(30.6)	(55.4)		(70.8)	(53.1)	(49.5)	(55.6)	(69.0)
1,070	1,079	77,480	17,243	2,041	11,097	616	792	2,575	60,237		2,753	40,514	5,589	4,546	5,031
		(40.1)	(20.0)	(61.4)	(17.8)	(8.3)	(15.8)	(32.6)	(56.3)		(70.8)	(54.2)	(49.5)	(55.6)	(71.3)
1,080	1,089	79,543	18,301	2,689	11,385	616	792	2,697	61,242		3,239	40,950	5,589	4,546	5,115
		(41.2)	(21.2)	(80.9)	(18.2)	(8.3)	(15.8)	(34.1)	(57.3)		(83.3)	(54.8)	(49.5)	(55.6)	(72.5)
1,090	1,099	81,183	19,105	2,689	12,022	616	875	2,780	62,079		3,239	41,547	5,745	4,630	5,115
		(42.0)	(22.2)	(80.9)	(19.3)	(8.3)	(17.5)	(35.2)	(58.0)		(83.3)	(55.6)	(50.9)	(56.7)	(72.5)
1,100	1,199	95,999	24,947	3,326	15,315	1,002	1,326	3,856	71,052		3,887	47,000	6,994	5,522	7,846
		(49.7)	(29.0)	(100.0)	(24.5)	(13.5)	(26.5)	(48.8)	(66.4)		(100.0)	(62.9)	(61.9)	(67.6)	(82.9)
1,200	1,299	107,999	30,625		19,762	1,207	1,477	4,730	77,374			52,076	8,035	5,522	6,051
		(55.9)	(35.5)		(31.7)	(16.3)	(29.5)	(59.8)	(72.3)			(69.7)	(71.2)	(67.6)	(85.8)
1,300	1,399	118,219	35,187		23,292	1,291	2,069	5,087	83,032			56,255	8,505	6,286	6,297
		(61.2)	(40.8)		(37.3)	(17.4)	(41.3)	(64.3)	(77.6)			(75.2)	(75.3)	(76.9)	(89.2)
1,400	1,499	127,952	41,523		28,660	1,618	2,626	5,170	86,429			59,339	8,505	6,442	6,453
		(66.3)	(48.2)		(45.9)	(21.8)	(52.4)	(80.8)	(80.8)			(79.4)	(78.8)	(79.4)	(91.5)
1,500		193,132	86,166		62,388	7,408	5,012	7,909	106,966			74,759	11,291	8,171	7,056
		(100.0)	(100.0)		(100.0)	(100.0)	(100.0)	(100.0)	(100.0)			(100.0)	(100.0)	(100.0)	(100.0)

平均賃金額	202.616	260.129	76.000	72.421	269.137	348.046	232.272	206.153	156.287	53.071	49.396	161.136	176.060	182.159	128.573
月間当たり賃金額	1,424	1,647	1,000	1,012	1,661	2,093	1,536	1,471	1,244	943	989	1,240	943	1,325	1,086
月一人当たり労働時間数	133	152	76	70	157	164	151	136	119	56	49	122	124	126	117
第1・2四分位係数	928	930	1,000	928	930	985	1,000	940	928	928	928	928	928	928	514
第1・3四分位係数	930	945	1,000	930	950	1,139	1,020	950	928	930	928	930	930	930	649
第1・4四分位係数	950	1,130	1,000	930	1,205	1,551	1,180	1,020	930	930	930	940	940	938	930
四分位係数	1,200	1,526	1,000	995	1,548	2,000	1,450	1,200	1,016	930	930	1,045	1,090	1,044	973
【上段】	0.3142	0.2618	0.0004	0.0757	0.2332	0.2285	0.1616	0.2420	0.2019	0.0138	0.0808	0.2157	0.1994	0.2038	0.0875
【下段】															
累積労働者数															
累積構成比															

04年
 総括表(1) (産業・就業形態別の資金階級別、規模別、地域別、年齢別表)
 産業：(全て) G-情報通信業のうま就業形態：(全て)

産別適用除外含む全労働者

時間当り所定内賃金額 (3手当を除く)	合計		規模別				地域別				年齢別				
	1~9人	10~29人	30~99人	阪神	播磨	県北・淡路	17歳以下	18~19歳	20~54歳	55~59歳	60~64歳	65歳以上			
	人数	人数	人数	人数	人数	人数	人数	人数	人数	人数	人数	人数			
計	332,411	176,210	73	223,001	84,272	25,138	2,535	9,925	215,975	31,736	25,893	46,347			
円	4,709	266		4,015	959				3,866	173	173	763			
917	(1.5)	(3.0)		(1.8)	(1.1)				(1.8)	(0.5)	(0.7)	(1.6)			
918	4,975	266		4,015	959				3,866	173	173	763			
	(1.5)	(3.0)		(1.8)	(1.1)				(1.8)	(0.5)	(0.7)	(1.6)			
919	4,975	266		4,015	959				3,866	173	173	763			
	(1.5)	(3.0)		(1.8)	(1.1)				(1.8)	(0.5)	(0.7)	(1.6)			
920	5,030	266		4,015	1,015			55	3,866	173	173	763			
	(1.5)	(3.1)		(1.8)	(1.2)			(0.6)	(1.8)	(0.5)	(0.7)	(1.6)			
921	5,030	266		4,015	1,015			55	3,866	173	173	763			
	(1.5)	(3.1)		(1.8)	(1.2)			(0.6)	(1.8)	(0.5)	(0.7)	(1.6)			
922	5,030	266		4,015	1,015			55	3,866	173	173	763			
	(1.5)	(3.1)		(1.8)	(1.2)			(0.6)	(1.8)	(0.5)	(0.7)	(1.6)			
923	5,030	266		4,015	1,015			55	3,866	173	173	763			
	(1.5)	(3.1)		(1.8)	(1.2)			(0.6)	(1.8)	(0.5)	(0.7)	(1.6)			
924	5,030	266		4,015	1,015			55	3,866	173	173	763			
	(1.5)	(3.1)		(1.8)	(1.2)			(0.6)	(1.8)	(0.5)	(0.7)	(1.6)			
925	5,030	266		4,015	1,015			55	3,866	173	173	763			
	(1.5)	(3.1)		(1.8)	(1.2)			(0.6)	(1.8)	(0.5)	(0.7)	(1.6)			
926	5,030	266		4,015	1,015			55	3,866	173	173	763			
	(1.5)	(3.1)		(1.8)	(1.2)			(0.6)	(1.8)	(0.5)	(0.7)	(1.6)			
927	10,425	3,123		6,824	3,601		122	177	5,938	1,026	811	2,352			
	(3.1)	(4.7)		(3.1)	(4.3)		(4.8)	(1.8)	(2.7)	(3.1)	(3.1)	(5.1)			
928	10,425	3,123		6,824	3,601		122	177	5,938	1,026	811	2,352			
	(3.1)	(4.7)		(3.1)	(4.3)		(4.8)	(1.8)	(2.7)	(3.1)	(3.1)	(5.1)			
929	43,473	18,921		24,553	15,320		643	2,317	20,651	2,461	2,768	14,635			
	(13.1)	(12.1)		(11.0)	(18.2)		(25.4)	(23.3)	(9.6)	(7.8)	(10.7)	(31.6)			
930	44,898	20,346		25,978	15,320		643	2,317	20,651	2,461	2,768	16,060			
	(13.5)	(13.0)		(11.6)	(18.2)		(25.4)	(23.3)	(9.6)	(7.8)	(10.7)	(34.7)			
931	45,062	20,510		25,978	15,320		643	2,317	20,651	2,461	2,932	16,060			
	(13.6)	(13.1)		(11.6)	(18.2)		(25.4)	(23.3)	(9.6)	(7.8)	(11.3)	(34.7)			
932	45,235	20,683		25,978	15,493		643	2,317	20,823	2,461	2,932	16,060			
	(13.6)	(13.2)		(11.6)	(18.4)		(25.4)	(23.3)	(9.6)	(7.8)	(11.3)	(34.7)			
933	45,235	20,683		25,978	15,493		643	2,317	20,823	2,461	2,932	16,060			
	(13.6)	(13.2)		(11.6)	(18.4)		(25.4)	(23.3)	(9.6)	(7.8)	(11.3)	(34.7)			
934	45,235	20,683		25,978	15,493		643	2,317	20,823	2,461	2,932	16,060			
	(13.6)	(13.2)		(11.6)	(18.4)		(25.4)	(23.3)	(9.6)	(7.8)	(11.3)	(34.7)			
935	45,592	21,040		26,334	15,493		643	2,317	20,823	2,461	2,932	16,416			
	(13.7)	(13.5)		(11.8)	(18.4)		(25.4)	(23.3)	(9.6)	(7.8)	(11.3)	(35.4)			
936	45,811	21,040		26,334	15,712		643	2,317	21,043	2,461	2,932	16,416			
	(13.8)	(13.5)		(11.8)	(18.6)		(25.4)	(23.3)	(9.7)	(7.8)	(11.3)	(35.4)			
937	45,811	21,040		26,334	15,712		643	2,317	21,043	2,461	2,932	16,416			
	(13.8)	(13.5)		(11.8)	(18.6)		(25.4)	(23.3)	(9.7)	(7.8)	(11.3)	(35.4)			
938	45,811	21,040		26,334	15,712		643	2,317	21,043	2,461	2,932	16,416			
	(13.8)	(13.5)		(11.8)	(18.6)		(25.4)	(23.3)	(9.7)	(7.8)	(11.3)	(35.4)			
939	48,088	22,558		28,301	15,877		643	2,317	21,764	2,721	3,100	17,187			
	(14.5)	(14.4)		(12.7)	(18.8)		(25.4)	(26.9)	(10.1)	(8.6)	(12.0)	(37.1)			
940	48,707	23,088		28,748	16,050		643	2,673	22,027	2,721	3,456	17,187			
	(14.7)	(14.8)		(12.9)	(19.0)		(25.4)	(26.9)	(10.2)	(8.6)	(13.3)	(37.1)			
941	48,707	23,088		28,748	16,050		643	2,673	22,027	2,721	3,456	17,187			
	(14.7)	(14.8)		(12.9)	(19.0)		(25.4)	(26.9)	(10.2)	(8.6)	(13.3)	(37.1)			

942	942	48,875	23,256	25,620		28,916	16,050	3,910		643	2,673	22,195	2,721	3,456	17,187
		(14.7)	(14.9)	(14.5)		(13.0)	(19.0)	(15.6)		(25.4)	(26.9)	(10.3)	(8.6)	(13.3)	(37.1)
943	943	48,875	23,256	25,620		28,916	16,050	3,910		643	2,673	22,195	2,721	3,456	17,187
		(14.7)	(14.9)	(14.5)		(13.0)	(19.0)	(15.6)		(25.4)	(26.9)	(10.3)	(8.6)	(13.3)	(37.1)
944	944	48,875	23,256	25,620		28,916	16,050	3,910		643	2,673	22,195	2,721	3,456	17,187
		(14.7)	(14.9)	(14.5)		(13.0)	(19.0)	(15.6)		(25.4)	(26.9)	(10.3)	(8.6)	(13.3)	(37.1)
945	945	50,318	23,780	26,538		29,701	16,707	3,910		753	3,029	22,582	2,721	3,029	17,557
		(15.1)	(15.2)	(15.1)		(13.3)	(19.8)	(15.6)		(29.7)	(30.5)	(10.5)	(8.6)	(14.2)	(37.9)
946	946	50,428	23,780	26,648		29,701	16,817	3,910		753	3,029	22,692	2,721	3,029	17,557
		(15.2)	(15.2)	(15.1)		(13.3)	(20.0)	(15.6)		(29.7)	(30.5)	(10.5)	(8.6)	(14.2)	(37.9)
947	947	52,440	25,793	26,648		31,713	16,817	3,910		753	3,029	22,692	3,009	3,819	19,139
		(15.8)	(16.5)	(15.1)		(14.2)	(20.0)	(15.6)		(29.7)	(30.5)	(10.5)	(9.5)	(14.7)	(41.3)
948	948	53,328	26,681	26,648		32,070	17,204	4,055		753	3,029	23,078	3,365	3,819	19,284
		(16.0)	(17.1)	(15.1)		(14.4)	(20.4)	(16.1)		(29.7)	(30.5)	(10.7)	(10.6)	(14.7)	(41.6)
949	949	53,328	26,681	26,648		32,070	17,204	4,055		753	3,029	23,078	3,365	3,819	19,284
		(16.0)	(17.1)	(15.1)		(14.4)	(20.4)	(16.1)		(29.7)	(30.5)	(10.7)	(10.6)	(14.7)	(41.6)
950	950	65,972	29,833	36,139		42,328	19,270	4,374		1,191	4,813	30,411	4,266	4,769	20,522
		(19.8)	(19.1)	(20.5)		(19.0)	(22.9)	(17.4)		(47.0)	(48.5)	(14.1)	(13.4)	(18.4)	(44.3)
951	951	66,494	29,833	36,661		42,850	19,270	4,374		1,191	5,335	30,411	4,266	4,769	20,522
		(20.0)	(19.1)	(20.8)		(19.2)	(22.9)	(17.4)		(47.0)	(53.7)	(14.1)	(13.4)	(18.4)	(44.3)
952	952	67,785	30,342	37,443		43,969	19,443	4,374		1,713	5,595	30,411	4,607	4,769	20,690
		(20.4)	(19.4)	(21.2)		(19.7)	(23.1)	(17.4)		(67.6)	(56.4)	(14.1)	(14.5)	(18.4)	(44.6)
953	953	68,677	30,342	38,335		44,751	19,553	4,374		1,713	5,856	31,042	4,607	4,769	20,690
		(20.7)	(19.4)	(21.8)		(20.1)	(23.2)	(17.4)		(67.6)	(59.0)	(14.4)	(14.5)	(18.4)	(44.6)
954	954	69,111	30,515	38,596		45,012	19,725	4,374		1,713	5,856	31,476	4,607	4,769	20,690
		(20.8)	(19.5)	(21.9)		(20.2)	(23.4)	(17.4)		(67.6)	(59.0)	(14.6)	(14.5)	(18.4)	(44.6)
955	955	70,570	30,570	40,000		46,416	19,781	4,374		1,713	5,856	32,062	4,868	5,120	20,950
		(21.2)	(19.6)	(22.7)		(20.8)	(23.5)	(17.4)		(67.6)	(59.0)	(14.8)	(15.3)	(19.8)	(45.2)
956	956	71,443	30,570	40,873		47,288	19,781	4,374		1,713	6,117	32,674	4,868	5,120	20,950
		(21.5)	(19.6)	(23.2)		(21.2)	(23.5)	(17.4)		(67.6)	(61.6)	(15.1)	(15.3)	(19.8)	(45.2)
957	957	72,541	30,626	41,916		48,332	19,836	4,374		1,713	6,117	32,730	4,868	5,381	21,733
		(21.8)	(19.6)	(23.8)		(21.7)	(23.5)	(17.4)		(67.6)	(61.6)	(15.2)	(15.3)	(20.8)	(46.9)
958	958	72,802	30,626	42,176		48,592	19,836	4,374		1,713	6,117	32,990	4,868	5,381	21,733
		(21.9)	(19.6)	(23.9)		(21.8)	(23.5)	(17.4)		(67.6)	(61.6)	(15.3)	(15.3)	(20.8)	(46.9)
959	959	73,587	30,798	42,788		49,204	20,009	4,374		1,713	6,117	33,775	4,868	5,381	21,733
		(22.1)	(19.7)	(24.3)		(22.1)	(23.7)	(17.4)		(67.6)	(61.6)	(15.6)	(15.3)	(20.8)	(46.9)
960	960	77,932	32,296	45,635		52,274	21,107	4,551		1,713	6,729	36,378	5,544	5,593	21,975
		(23.4)	(20.7)	(25.9)		(23.4)	(25.0)	(18.1)		(67.6)	(70.4)	(16.8)	(17.5)	(21.6)	(47.4)
961	961	78,192	32,296	45,896		52,535	21,107	4,551		1,713	6,990	36,897	5,544	5,593	21,975
		(23.5)	(20.7)	(26.0)		(23.6)	(25.0)	(18.1)		(67.6)	(70.4)	(16.8)	(17.5)	(21.6)	(47.4)
962	962	78,711	32,464	46,247		53,054	21,107	4,551		1,713	6,990	36,897	5,544	5,593	21,975
		(23.7)	(20.8)	(26.2)		(23.8)	(25.0)	(18.1)		(67.6)	(70.4)	(17.1)	(17.5)	(21.6)	(47.4)
963	963	78,711	32,464	46,247		53,054	21,107	4,551		1,713	6,990	36,897	5,544	5,593	21,975
		(23.7)	(20.8)	(26.2)		(23.8)	(25.0)	(18.1)		(67.6)	(70.4)	(17.1)	(17.5)	(21.6)	(47.4)
964	964	79,149	32,641	46,508		53,437	21,162	4,551		1,713	6,990	37,335	5,544	5,593	21,975
		(23.8)	(20.9)	(26.4)		(24.0)	(25.1)	(18.1)		(67.6)	(70.4)	(17.3)	(17.5)	(21.6)	(47.4)
965	965	80,178	32,888	47,290		54,465	21,162	4,551		1,713	6,990	37,581	5,544	5,854	22,496
		(24.1)	(21.1)	(26.8)		(24.4)	(25.1)	(18.1)		(67.6)	(70.4)	(17.4)	(17.5)	(22.6)	(48.5)
966	966	80,178	32,888	47,290		54,465	21,162	4,551		1,713	6,990	37,581	5,544	5,854	22,496
		(24.1)	(21.1)	(26.8)		(24.4)	(25.1)	(18.1)		(67.6)	(70.4)	(17.4)	(17.5)	(22.6)	(48.5)
967	967	80,178	32,888	47,290		54,465	21,162	4,551		1,713	6,990	37,581	5,544	5,854	22,496
		(24.1)	(21.1)	(26.8)		(24.4)	(25.1)	(18.1)		(67.6)	(70.4)	(17.4)	(17.5)	(22.6)	(48.5)
968	968	80,178	32,888	47,290		54,465	21,162	4,551		1,713	6,990	37,581	5,544	5,854	22,496
		(24.1)	(21.1)	(26.8)		(24.4)	(25.1)	(18.1)		(67.6)	(70.4)	(17.4)	(17.5)	(22.6)	(48.5)
969	969	80,178	32,888	47,290		54,465	21,162	4,551		1,713	6,990	37,581	5,544	5,854	22,496
		(24.1)	(21.1)	(26.8)		(24.4)	(25.1)	(18.1)		(67.6)	(70.4)	(17.4)	(17.5)	(22.6)	(48.5)

970	970	85,329 (25.7)	34,673 (22.2)	50,656 (28.7)	58,718 (26.3)	21,915 (26.0)	4,696 (18.7)	1,713 (67.6)	6,990 (70.4)	40,594 (18.8)	6,442 (20.3)	6,129 (23.7)	23,461 (50.6)
971	971	85,329 (25.7)	34,673 (22.2)	50,656 (28.7)	58,718 (26.3)	21,915 (26.0)	4,696 (18.7)	1,713 (67.6)	6,990 (70.4)	40,594 (18.8)	6,442 (20.3)	6,129 (23.7)	23,461 (50.6)
972	972	85,436 (25.7)	34,780 (22.3)	50,656 (28.7)	58,718 (26.3)	22,022 (26.1)	4,696 (18.7)	1,713 (67.6)	6,990 (70.4)	40,701 (18.8)	6,442 (20.3)	6,129 (23.7)	23,461 (50.6)
973	973	85,696 (25.8)	34,780 (22.3)	50,917 (28.9)	58,979 (26.4)	22,022 (26.1)	4,696 (18.7)	1,713 (67.6)	6,990 (70.4)	40,962 (19.0)	6,442 (20.3)	6,129 (23.7)	23,461 (50.6)
974	974	85,696 (25.8)	34,780 (22.3)	50,917 (28.9)	58,979 (26.4)	22,022 (26.1)	4,696 (18.7)	1,713 (67.6)	6,990 (70.4)	40,962 (19.0)	6,442 (20.3)	6,129 (23.7)	23,461 (50.6)
975	975	86,463 (26.0)	35,392 (22.7)	51,071 (29.0)	59,490 (26.3)	22,132 (26.3)	4,841 (19.3)	1,713 (67.6)	6,990 (70.4)	41,618 (19.3)	6,553 (20.6)	6,129 (23.7)	23,461 (50.6)
976	976	86,985 (26.2)	35,392 (22.7)	51,593 (29.3)	60,011 (26.9)	22,132 (26.3)	4,841 (19.3)	1,713 (67.6)	6,990 (70.4)	41,878 (19.4)	6,553 (20.6)	6,129 (23.7)	23,722 (51.2)
977	977	86,985 (26.2)	35,392 (22.7)	51,593 (29.3)	60,011 (26.9)	22,132 (26.3)	4,841 (19.3)	1,713 (67.6)	6,990 (70.4)	41,878 (19.4)	6,553 (20.6)	6,129 (23.7)	23,722 (51.2)
978	978	86,985 (26.2)	35,392 (22.7)	51,593 (29.3)	60,011 (26.9)	22,132 (26.3)	4,841 (19.3)	1,713 (67.6)	6,990 (70.4)	41,878 (19.4)	6,553 (20.6)	6,129 (23.7)	23,722 (51.2)
979	979	86,985 (26.2)	35,392 (22.7)	51,593 (29.3)	60,011 (26.9)	22,132 (26.3)	4,841 (19.3)	1,713 (67.6)	6,990 (70.4)	41,878 (19.4)	6,553 (20.6)	6,129 (23.7)	23,722 (51.2)
980	980	92,950 (28.0)	38,784 (24.8)	54,134 (30.7)	64,372 (28.9)	23,737 (28.2)	4,841 (19.3)	1,713 (67.6)	6,990 (70.4)	45,528 (21.1)	7,725 (24.3)	6,222 (24.0)	24,772 (53.4)
989	989	96,762 (29.1)	39,966 (25.6)	56,765 (32.2)	67,571 (30.3)	24,350 (28.9)	4,841 (19.3)	1,713 (67.6)	6,990 (70.4)	48,819 (22.6)	7,725 (24.3)	6,331 (24.5)	25,184 (54.3)
1000	1000	113,266 (34.1)	51,376 (32.9)	61,858 (35.1)	75,663 (33.9)	32,069 (38.1)	5,534 (22.0)	2,535 (100.0)	7,757 (78.2)	58,359 (27.0)	9,623 (30.3)	7,244 (28.0)	27,747 (59.9)
1010	1010	115,808 (34.8)	52,805 (33.8)	62,972 (35.7)	77,534 (34.8)	32,740 (38.9)	5,534 (22.0)		7,757 (78.2)	59,682 (27.6)	10,044 (31.6)	7,503 (29.0)	28,288 (61.0)
1020	1020	120,884 (36.4)	54,519 (34.9)	66,334 (37.6)	80,383 (36.0)	34,796 (41.3)	5,704 (22.7)		8,195 (82.6)	63,706 (29.5)	10,099 (31.8)	7,835 (30.3)	28,514 (61.5)
1030	1030	123,595 (37.2)	55,407 (35.5)	68,157 (38.7)	82,765 (37.1)	35,126 (41.7)	5,704 (22.7)		8,317 (83.8)	65,618 (30.4)	10,335 (32.6)	8,096 (31.3)	28,694 (61.9)
1040	1040	128,625 (38.7)	57,615 (36.9)	70,979 (40.3)	85,302 (38.3)	37,619 (44.6)	5,704 (22.7)		8,687 (87.5)	68,261 (31.6)	10,651 (33.6)	8,910 (34.4)	29,581 (63.8)
1050	1050	133,273 (40.1)	60,870 (39.0)	72,371 (41.1)	87,664 (39.3)	38,011 (45.1)	7,598 (30.2)		8,687 (87.5)	70,639 (32.7)	11,862 (37.4)	9,614 (37.1)	29,935 (64.6)
1060	1060	136,484 (41.1)	62,931 (40.3)	73,522 (41.7)	89,630 (40.2)	39,257 (46.6)	7,598 (30.2)		8,687 (87.5)	72,517 (33.6)	12,356 (38.9)	9,980 (38.5)	30,409 (65.6)
1070	1070	138,975 (41.8)	63,847 (40.9)	75,097 (42.6)	90,828 (40.7)	40,550 (48.1)	7,598 (30.2)		8,687 (87.5)	74,079 (34.3)	12,447 (39.2)	10,467 (40.4)	30,760 (66.4)
1080	1080	142,127 (42.8)	64,681 (41.4)	77,415 (43.9)	93,778 (42.1)	40,725 (48.3)	7,623 (30.3)		8,713 (87.8)	76,186 (35.3)	12,627 (39.8)	10,770 (41.6)	31,297 (67.5)
1090	1090	144,449 (43.5)	65,531 (42.0)	78,886 (44.8)	95,088 (42.6)	41,074 (48.7)	8,287 (33.0)		8,713 (87.8)	77,852 (36.0)	12,808 (40.4)	11,033 (42.6)	31,509 (68.0)
1100	1100	174,742 (52.6)	82,534 (52.9)	92,176 (52.3)	114,829 (51.5)	47,105 (55.9)	12,808 (51.0)		8,713 (87.8)	97,811 (45.3)	16,187 (51.0)	15,011 (58.0)	34,484 (74.4)
1200	1200	206,981 (62.3)	97,481 (62.4)	109,469 (62.1)	138,613 (62.2)	54,380 (64.5)	9,569 (55.6)		9,569 (96.4)	120,103 (55.6)	19,590 (61.7)	17,029 (65.8)	38,155 (82.3)
1300	1300	224,288 (67.5)	105,848 (67.8)	118,396 (67.2)	149,244 (66.9)	58,838 (69.8)	16,206 (64.5)		9,569 (96.4)	134,887 (62.5)	20,657 (65.1)	17,538 (67.7)	39,103 (84.4)
1400	1400	242,907 (73.1)	115,188 (73.8)	127,662 (72.4)	163,075 (78.6)	62,974 (74.7)	16,859 (67.1)		9,569 (96.4)	149,339 (69.1)	22,174 (69.9)	19,556 (75.7)	39,735 (85.7)
1500	1500	332,411 (100.0)	156,128 (100.0)	176,210 (100.0)	223,001 (100.0)	84,272 (100.0)	25,138 (100.0)		9,925 (100.0)	215,975 (100.0)	31,736 (100.0)	25,893 (100.0)	46,347 (100.0)

平均賃金額	161,745	154,060	168,539	195,885	159,290	166,818	166,514	42,446	55,342	179,362	170,409	152,050	108,442
月一人当たり労働時間数	1,395	1,363	1,424	1,351	1,395	1,413	1,336	961	999	1,469	1,423	1,323	1,182
第1・2 0分位位数	113	110	115	139	110	118	118	44	56	121	110	111	93
第1・1 0分位位数	930	930	930	981	930	930	930	930	930	930	930	930	928
第1・4 分位位数	930	930	930	981	930	930	930	930	930	940	948	930	930
中位	970	990	960	981	970	960	1,050	930	940	1,000	1,000	1,000	930
四分位差係数	1,155	1,164	1,146	1,372	1,170	1,114	1,180	952	951	1,235	1,168	1,141	970
累積労働者数	0.2367	0.2194	0.2552	0.1826	0.2384	0.2425	0.2157	0.0369	0.0319	0.2397	0.3114	0.2156	0.1396
【上段】				業績構成比									
【下段】													

総括表(2) (産業・就業形態別の賞金補償級別、性別年齢別表)
04年

産業・G-情報通信業のうち新聞業、就業形態：(全て)

産別適用除外を含む全労働者

時間当り所定内賃金額 (3年当を除く)	合計	男					女								
		男性計	17歳以下	18～19歳	20～54歳	55～59歳	60～64歳	65歳以上	女性計	17歳以下	18～19歳	20～54歳	55～59歳	60～64歳	65歳以上
計	332,411	106,654	522	4,574	73,521	7,242	7,955	12,840	225,757	2,013	5,351	142,454	24,494	17,938	33,506
円	4,975	856			713			144	4,118			3,154	173	173	619
917	(1.5)	(0.8)			(1.0)			(1.1)	(1.8)			(2.2)	(0.7)	(1.0)	(1.8)
918	(1.5)	(0.8)			(1.0)			144	4,118			3,154	173	173	619
919	(1.5)	(0.8)			(1.0)			(1.1)	(1.8)			(2.2)	(0.7)	(1.0)	(1.8)
920	(1.5)	(0.9)		55	(1.2)			144	4,118			3,154	173	173	619
921	(1.5)	(0.9)		55	(1.2)			(1.1)	(1.8)			(2.2)	(0.7)	(1.0)	(1.8)
922	(1.5)	(0.9)		55	(1.2)			144	4,118			3,154	173	173	619
923	(1.5)	(0.9)		55	(1.2)			(1.1)	(1.8)			(2.2)	(0.7)	(1.0)	(1.8)
924	(1.5)	(0.9)		55	(1.2)			144	4,118			3,154	173	173	619
925	(1.5)	(0.9)		55	(1.2)			(1.1)	(1.8)			(2.2)	(0.7)	(1.0)	(1.8)
926	(1.5)	(0.9)		55	(1.2)			144	4,118			3,154	173	173	619
927	(1.5)	(0.9)		55	(1.2)			(1.1)	(1.8)			(2.2)	(0.7)	(1.0)	(1.8)
928	(3.1)	(1.5)		978	(1.3)			473	8,810	122	122	4,959	1,026	702	1,879
929	(3.1)	(1.5)		978	(1.3)			(1.4)	(3.9)	(6.0)	(2.3)	(3.5)	(4.2)	(5.6)	(5.6)
930	(13.1)	(9.1)	261	1,174	(25.7)	4,841	595	571	33,717	383	(21.4)	15,810	1,865	2,196	12,321
931	(13.5)	(9.1)	261	1,174	(25.7)	4,841	595	(7.2)	(14.9)	(19.0)	(21.4)	15,810	1,865	2,196	(36.8)
932	(13.6)	(9.1)	261	1,174	(25.7)	4,841	595	(7.2)	(15.6)	(19.0)	(21.4)	15,810	1,865	2,196	(41.0)
933	(13.6)	(9.1)	261	1,174	(25.7)	4,841	595	(7.2)	(15.6)	(19.0)	(21.4)	15,810	1,865	2,360	(41.0)
934	(13.6)	(9.1)	261	1,174	(25.7)	4,841	595	(7.2)	(15.7)	(19.0)	(21.4)	15,810	1,865	2,360	(41.0)
935	(13.6)	(9.1)	261	1,174	(25.7)	4,841	595	(7.2)	(15.7)	(19.0)	(21.4)	15,810	1,865	2,360	(41.0)
936	(13.7)	(9.1)	261	1,174	(25.7)	4,841	595	(7.2)	(15.7)	(19.0)	(21.4)	15,810	1,865	2,360	(41.0)
937	(13.8)	(9.1)	261	1,174	(25.7)	4,841	595	(7.2)	(16.0)	(19.0)	(21.4)	15,810	1,865	2,360	(42.1)
938	(13.8)	(9.1)	261	1,174	(25.7)	4,841	595	(7.2)	(16.0)	(19.0)	(21.4)	15,810	1,865	2,360	(42.1)
939	(13.8)	(9.1)	261	1,174	(25.7)	4,841	595	(7.2)	(16.0)	(19.0)	(21.4)	15,810	1,865	2,360	(42.1)
940	(14.5)	(9.5)	261	1,174	(25.7)	5,194	595	(7.2)	37,979	383	1,499	16,570	2,126	2,528	14,873
941	(14.7)	(9.6)	261	1,174	(25.7)	5,367	595	(7.2)	38,425	383	1,499	16,660	2,126	2,885	14,873
			(50.0)	(25.7)	(7.3)	(8.2)	(8.2)	(18.0)	(17.0)	(19.0)	(28.0)	(11.7)	(8.7)	(16.1)	(44.4)

942	942	48,875 (14.7)	10,282 (9.6)	261 (50.0)	1,174 (25.7)	5,367 (7.3)	595 (8.2)	571 (7.2)	2,314 (18.0)	38,593 (17.1)	383 (19.0)	1,499 (28.0)	16,828 (11.8)	2,126 (8.7)	2,885 (16.1)	14,873 (44.4)
943	943	48,875 (14.7)	10,282 (9.6)	261 (50.0)	1,174 (25.7)	5,367 (7.3)	595 (8.2)	571 (7.2)	2,314 (18.0)	38,593 (17.1)	383 (19.0)	1,499 (28.0)	16,828 (11.8)	2,126 (8.7)	2,885 (16.1)	14,873 (44.4)
944	944	48,875 (14.7)	10,282 (9.6)	261 (50.0)	1,174 (25.7)	5,367 (7.3)	595 (8.2)	571 (7.2)	2,314 (18.0)	38,593 (17.1)	383 (19.0)	1,499 (28.0)	16,828 (11.8)	2,126 (8.7)	2,885 (16.1)	14,873 (44.4)
945	945	50,318 (15.1)	10,392 (9.7)	261 (50.0)	1,174 (25.7)	5,476 (7.4)	595 (8.2)	571 (7.2)	2,314 (18.0)	39,927 (17.7)	492 (24.4)	1,855 (34.7)	17,106 (12.0)	2,126 (8.7)	3,104 (17.3)	15,243 (45.5)
946	946	50,428 (15.2)	10,501 (9.8)	261 (50.0)	1,174 (25.7)	5,586 (7.6)	595 (8.2)	571 (7.2)	2,314 (18.0)	39,927 (17.7)	492 (24.4)	1,855 (34.7)	17,106 (12.0)	2,126 (8.7)	3,104 (17.3)	15,243 (45.5)
947	947	52,440 (15.8)	12,226 (11.5)	261 (50.0)	1,174 (25.7)	5,586 (7.6)	595 (8.2)	715 (9.0)	3,895 (30.3)	40,214 (17.8)	492 (24.4)	1,855 (34.7)	17,106 (12.0)	2,414 (9.9)	3,104 (17.3)	15,243 (45.5)
948	948	53,328 (16.0)	12,281 (11.5)	261 (50.0)	1,174 (25.7)	5,641 (7.7)	595 (8.2)	715 (9.0)	3,895 (30.3)	41,047 (18.2)	492 (24.4)	1,855 (34.7)	17,437 (12.2)	2,770 (11.3)	3,104 (17.3)	15,389 (45.9)
949	949	53,328 (16.0)	12,281 (11.5)	261 (50.0)	1,174 (25.7)	5,641 (7.7)	595 (8.2)	715 (9.0)	3,895 (30.3)	41,047 (18.2)	492 (24.4)	1,855 (34.7)	17,437 (12.2)	2,770 (11.3)	3,104 (17.3)	15,389 (45.9)
950	950	65,972 (19.8)	16,117 (15.1)	261 (50.0)	1,956 (42.8)	8,694 (11.8)	595 (8.2)	715 (9.0)	3,895 (30.3)	49,855 (22.1)	931 (46.2)	2,857 (53.4)	21,716 (15.2)	3,671 (15.0)	4,054 (22.6)	16,626 (49.6)
951	951	66,494 (20.0)	16,639 (15.6)	261 (50.0)	2,478 (54.2)	8,694 (11.8)	595 (8.2)	715 (9.0)	3,895 (30.3)	49,855 (22.1)	931 (46.2)	2,857 (53.4)	21,716 (15.2)	3,671 (15.0)	4,054 (22.6)	16,626 (49.6)
952	952	67,785 (20.4)	17,067 (16.0)	522 (100.0)	2,478 (54.2)	8,694 (11.8)	595 (8.2)	715 (9.0)	4,063 (31.6)	50,718 (22.5)	1,191 (59.2)	3,118 (58.3)	21,716 (15.2)	4,012 (16.4)	4,054 (22.6)	16,626 (49.6)
953	953	68,677 (20.7)	17,067 (16.0)		2,478 (54.2)	8,694 (11.8)	595 (8.2)	715 (9.0)	4,063 (31.6)	51,610 (22.9)	1,191 (59.2)	3,378 (63.1)	22,347 (15.7)	4,012 (16.4)	4,054 (22.6)	16,626 (49.6)
954	954	69,111 (20.8)	17,067 (16.0)		2,478 (54.2)	8,694 (11.8)	595 (8.2)	715 (9.0)	4,063 (31.6)	52,043 (23.1)	1,191 (59.2)	3,378 (63.1)	22,781 (16.0)	4,012 (16.4)	4,054 (22.6)	16,626 (49.6)
955	955	70,570 (21.2)	17,067 (16.0)		2,478 (54.2)	8,694 (11.8)	595 (8.2)	715 (9.0)	4,063 (31.6)	53,503 (23.7)	1,191 (59.2)	3,378 (63.1)	23,368 (16.4)	4,272 (17.4)	4,405 (24.6)	16,887 (50.4)
956	956	71,443 (21.5)	17,067 (16.0)		2,478 (54.2)	8,694 (11.8)	595 (8.2)	715 (9.0)	4,063 (31.6)	54,375 (24.1)	1,191 (59.2)	3,378 (63.1)	23,980 (16.8)	4,272 (17.4)	4,405 (24.6)	16,887 (50.4)
957	957	72,541 (21.8)	17,123 (16.1)		2,478 (54.2)	8,750 (11.9)	595 (8.2)	715 (9.0)	4,063 (31.6)	55,418 (24.5)	1,191 (59.2)	3,639 (68.0)	24,241 (16.8)	4,272 (17.4)	4,666 (26.0)	17,670 (52.7)
958	958	72,802 (21.9)	17,123 (16.1)		2,478 (54.2)	8,750 (11.9)	595 (8.2)	715 (9.0)	4,063 (31.6)	55,679 (24.7)	1,191 (59.2)	3,639 (68.0)	24,241 (16.8)	4,272 (17.4)	4,666 (26.0)	17,670 (52.7)
959	959	73,587 (22.1)	17,384 (16.3)		2,478 (54.2)	9,011 (12.3)	595 (8.2)	715 (9.0)	4,063 (31.6)	56,203 (24.9)	1,191 (59.2)	3,639 (68.0)	24,765 (17.4)	4,272 (17.4)	4,666 (26.0)	17,670 (52.7)
960	960	77,932 (23.4)	18,542 (17.4)		2,829 (61.8)	9,818 (13.4)	595 (8.2)	715 (9.0)	4,063 (31.6)	59,389 (26.3)	1,191 (59.2)	3,900 (72.9)	26,560 (18.6)	4,949 (20.2)	4,878 (27.2)	17,911 (53.5)
961	961	78,192 (23.5)	18,542 (17.4)		2,829 (61.8)	9,818 (13.4)	595 (8.2)	715 (9.0)	4,063 (31.6)	59,650 (26.4)	1,191 (59.2)	4,161 (77.8)	26,560 (18.6)	4,949 (20.2)	4,878 (27.2)	17,911 (53.5)
962	962	78,711 (23.7)	18,971 (17.8)		2,829 (61.8)	10,247 (13.9)	595 (8.2)	715 (9.0)	4,063 (31.6)	59,740 (26.5)	1,191 (59.2)	4,161 (77.8)	26,650 (18.7)	4,949 (20.2)	4,878 (27.2)	17,911 (53.5)
963	963	78,711 (23.7)	18,971 (17.8)		2,829 (61.8)	10,247 (13.9)	595 (8.2)	715 (9.0)	4,063 (31.6)	59,740 (26.5)	1,191 (59.2)	4,161 (77.8)	26,650 (18.7)	4,949 (20.2)	4,878 (27.2)	17,911 (53.5)
964	964	78,711 (23.7)	18,971 (17.8)		2,829 (61.8)	10,247 (13.9)	595 (8.2)	715 (9.0)	4,063 (31.6)	59,740 (26.5)	1,191 (59.2)	4,161 (77.8)	26,650 (18.7)	4,949 (20.2)	4,878 (27.2)	17,911 (53.5)
965	965	79,149 (23.8)	19,287 (18.1)		2,829 (61.8)	10,563 (14.4)	595 (8.2)	715 (9.0)	4,063 (31.6)	59,862 (26.5)	1,191 (59.2)	4,161 (77.8)	26,772 (18.8)	4,949 (20.2)	4,878 (27.2)	17,911 (53.5)
966	966	80,178 (24.1)	19,548 (18.3)		2,829 (61.8)	10,563 (14.4)	595 (8.2)	715 (9.0)	4,063 (31.6)	60,630 (26.9)	1,191 (59.2)	4,161 (77.8)	27,018 (19.0)	4,949 (20.2)	4,878 (27.2)	18,433 (55.0)
967	967	80,178 (24.1)	19,548 (18.3)		2,829 (61.8)	10,563 (14.4)	595 (8.2)	715 (9.0)	4,063 (31.6)	60,630 (26.9)	1,191 (59.2)	4,161 (77.8)	27,018 (19.0)	4,949 (20.2)	4,878 (27.2)	18,433 (55.0)
968	968	80,178 (24.1)	19,548 (18.3)		2,829 (61.8)	10,563 (14.4)	595 (8.2)	715 (9.0)	4,063 (31.6)	60,630 (26.9)	1,191 (59.2)	4,161 (77.8)	27,018 (19.0)	4,949 (20.2)	4,878 (27.2)	18,433 (55.0)
969	969	80,178 (24.1)	19,548 (18.3)		2,829 (61.8)	10,563 (14.4)	595 (8.2)	715 (9.0)	4,063 (31.6)	60,630 (26.9)	1,191 (59.2)	4,161 (77.8)	27,018 (19.0)	4,949 (20.2)	4,878 (27.2)	18,433 (55.0)

970	970	85,329 (25.7)	20,404 (19.1)		2,829 (61.8)	10,563 (14.4)	856 (11.8)	976 (12.3)	4,658 (36.3)	64,926 (28.8)	1,191 (59.2)	4,161 (77.8)	30,031 (21.1)	5,586 (22.8)	5,153 (28.7)	18,803 (56.1)
971	971	85,329 (25.7)	20,404 (19.1)		2,829 (61.8)	10,563 (14.4)	856 (11.8)	976 (12.3)	4,658 (36.3)	64,926 (28.8)	1,191 (59.2)	4,161 (77.8)	30,031 (21.1)	5,586 (22.8)	5,153 (28.7)	18,803 (56.1)
972	972	85,436 (25.7)	20,404 (19.1)		2,829 (61.8)	10,563 (14.4)	856 (11.8)	976 (12.3)	4,658 (36.3)	65,032 (28.8)	1,191 (59.2)	4,161 (77.8)	30,138 (21.2)	5,586 (22.8)	5,153 (28.7)	18,803 (56.1)
973	973	85,696 (25.8)	20,404 (19.1)		2,829 (61.8)	10,563 (14.4)	856 (11.8)	976 (12.3)	4,658 (36.3)	65,293 (28.9)	1,191 (59.2)	4,161 (77.8)	30,398 (21.3)	5,586 (22.8)	5,153 (28.7)	18,803 (56.1)
974	974	85,696 (25.8)	20,404 (19.1)		2,829 (61.8)	10,563 (14.4)	856 (11.8)	976 (12.3)	4,658 (36.3)	65,293 (28.9)	1,191 (59.2)	4,161 (77.8)	30,398 (21.3)	5,586 (22.8)	5,153 (28.7)	18,803 (56.1)
975	975	86,463 (26.0)	20,404 (19.1)		2,829 (61.8)	10,563 (14.4)	856 (11.8)	976 (12.3)	4,658 (36.3)	66,060 (29.3)	1,191 (59.2)	4,161 (77.8)	31,054 (21.8)	5,697 (23.3)	5,153 (28.7)	18,803 (56.1)
976	976	86,985 (26.2)	20,404 (19.1)		2,829 (61.8)	10,563 (14.4)	856 (11.8)	976 (12.3)	4,658 (36.3)	66,581 (29.5)	1,191 (59.2)	4,161 (77.8)	31,315 (22.0)	5,697 (23.3)	5,153 (28.7)	19,064 (56.9)
977	977	86,985 (26.2)	20,404 (19.1)		2,829 (61.8)	10,563 (14.4)	856 (11.8)	976 (12.3)	4,658 (36.3)	66,581 (29.5)	1,191 (59.2)	4,161 (77.8)	31,315 (22.0)	5,697 (23.3)	5,153 (28.7)	19,064 (56.9)
978	978	86,985 (26.2)	20,404 (19.1)		2,829 (61.8)	10,563 (14.4)	856 (11.8)	976 (12.3)	4,658 (36.3)	66,581 (29.5)	1,191 (59.2)	4,161 (77.8)	31,315 (22.0)	5,697 (23.3)	5,153 (28.7)	19,064 (56.9)
979	979	86,985 (26.2)	20,404 (19.1)		2,829 (61.8)	10,563 (14.4)	856 (11.8)	976 (12.3)	4,658 (36.3)	66,581 (29.5)	1,191 (59.2)	4,161 (77.8)	31,315 (22.0)	5,697 (23.3)	5,153 (28.7)	19,064 (56.9)
980	989	92,950 (28.0)	20,690 (19.4)		2,829 (61.8)	10,752 (14.6)	856 (11.8)	978 (12.3)	4,753 (37.0)	72,260 (32.0)	1,191 (59.2)	4,161 (77.8)	34,776 (24.4)	6,869 (28.0)	5,243 (29.2)	20,019 (59.7)
990	999	96,762 (29.1)	21,800 (20.4)		3,377 (73.8)	13,431 (18.3)	856 (11.8)	1,088 (13.7)	4,948 (38.5)	74,962 (33.2)	1,191 (59.2)	4,161 (77.8)	37,067 (26.0)	6,869 (28.0)	5,243 (29.2)	20,431 (61.0)
1,000	1,009	113,266 (34.1)	24,222 (22.7)		3,377 (73.8)	14,220 (19.3)	911 (12.6)	1,088 (13.7)	5,367 (41.8)	89,044 (39.4)	2,013 (100.0)	4,380 (81.8)	44,928 (31.5)	8,767 (35.8)	6,156 (34.3)	22,799 (68.0)
1,010	1,019	115,808 (34.8)	25,486 (23.9)		3,486 (76.2)	15,350 (20.9)	911 (12.6)	1,088 (13.7)	5,448 (42.4)	94,079 (41.7)		4,709 (88.0)	48,356 (33.9)	9,188 (37.5)	6,747 (37.6)	23,065 (68.8)
1,020	1,029	120,884 (36.4)	26,905 (25.1)		3,608 (78.9)	15,854 (21.6)	911 (12.6)	1,088 (13.7)	5,448 (42.4)	96,164 (44.2)		4,709 (88.0)	49,764 (34.9)	9,424 (38.5)	7,008 (39.1)	23,246 (69.4)
1,030	1,039	123,595 (37.2)	27,431 (25.7)		3,718 (81.3)	16,767 (22.8)	911 (12.6)	1,088 (13.7)	5,724 (44.6)	99,896 (44.2)		4,970 (92.9)	51,483 (36.1)	9,740 (39.8)	7,822 (43.6)	23,858 (71.2)
1,040	1,049	128,625 (38.7)	28,730 (26.9)		3,718 (81.3)	16,935 (23.0)	911 (12.6)	1,088 (13.7)	5,724 (44.6)	104,375 (46.2)		4,970 (92.9)	53,704 (37.7)	10,950 (44.7)	8,526 (47.5)	24,211 (72.3)
1,050	1,059	133,273 (40.1)	28,898 (27.1)		3,718 (81.3)	17,026 (23.2)	1,084 (15.0)	1,088 (13.7)	5,954 (46.4)	107,093 (47.4)		4,970 (92.9)	55,491 (39.0)	11,272 (46.0)	8,892 (49.6)	24,455 (73.0)
1,060	1,069	136,484 (41.1)	29,392 (27.6)		3,718 (81.3)	17,302 (23.5)	1,084 (15.0)	1,363 (17.1)	6,130 (47.7)	108,856 (48.2)		4,970 (92.9)	56,777 (39.9)	11,362 (46.4)	9,104 (50.8)	24,630 (73.5)
1,070	1,079	138,975 (41.8)	30,119 (28.2)		3,718 (81.3)	17,302 (23.5)	1,084 (15.0)	1,363 (17.1)	6,305 (49.1)	111,832 (49.5)		4,995 (93.3)	58,884 (41.3)	11,543 (47.1)	9,406 (52.4)	24,991 (74.6)
1,080	1,089	142,127 (42.8)	30,295 (28.4)		3,718 (81.3)	17,302 (23.5)	1,084 (15.0)	1,536 (19.3)	6,305 (49.1)	113,981 (50.5)		4,995 (93.3)	60,550 (42.5)	11,723 (47.9)	9,496 (52.9)	25,203 (75.2)
1,090	1,099	144,449 (43.5)	30,468 (28.6)		3,718 (81.3)	20,802 (28.3)	1,371 (18.9)	2,887 (36.3)	6,791 (52.9)	138,652 (61.4)		4,995 (93.3)	71,009 (54.1)	14,816 (60.5)	12,125 (67.6)	27,694 (82.7)
1,100	1,199	174,742 (52.6)	36,090 (33.8)		4,218 (92.2)	27,058 (36.8)	1,910 (26.4)	3,497 (44.0)	7,932 (61.8)	161,846 (71.7)		5,351 (100.0)	93,045 (65.3)	17,681 (72.2)	13,532 (75.4)	30,223 (90.2)
1,200	1,299	206,981 (62.3)	45,135 (42.3)		4,218 (92.2)	31,822 (43.3)	2,000 (27.6)	3,672 (46.2)	8,208 (63.9)	173,847 (77.0)			103,064 (72.3)	18,657 (76.2)	13,866 (77.3)	30,895 (92.2)
1,300	1,399	224,288 (67.5)	50,441 (47.3)		4,218 (92.2)	36,647 (52.6)	2,160 (29.8)	4,929 (62.0)	8,484 (66.1)	183,948 (81.5)			110,691 (77.7)	20,014 (81.7)	14,627 (81.5)	31,251 (93.3)
1,400	1,499	242,907 (73.1)	58,960 (55.3)		4,574 (100.0)	73,521 (100.0)	7,242 (100.0)	7,955 (100.0)	12,840 (100.0)	225,757 (100.0)			142,454 (100.0)	24,494 (100.0)	17,938 (100.0)	33,506 (100.0)

月時間	161,745	58,734	62,173	233,132	321,078	233,365	173,039	132,474	38,227	49,503	151,612	125,859	115,990	83,687
一人平均	1,395	941	1,028	1,753	1,981	1,618	1,515	1,254	966	975	1,323	1,258	1,192	1,054
時間あたり労働時間数	113	62	62	139	156	152	120	102	40	50	112	96	93	82
第1.2.0分位数	930	930	930	930	930	930	930	930	928	930	930	930	930	928
第1.1.0分位数	930	930	930	950	970	966	930	930	930	930	930	948	930	930
第1.4分位数	970	930	930	1,122	1,298	1,133	947	960	950	940	990	980	957	930
中四分位差係数	1,155	931	951	1,477	1,945	1,400	1,101	1,090	952	950	1,150	1,100	1,070	955
【上段】	0.2367	0.0121	0.0476	0.2477	0.2799	0.2388	0.3013	0.1778	0.0265	0.0113	0.2001	0.1682	0.1545	0.0841
【下段】														
累積労働者数														
累積構成比														