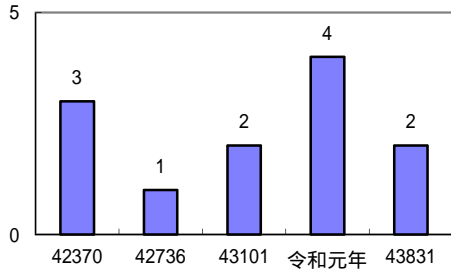


# 令和2年労働災害統計

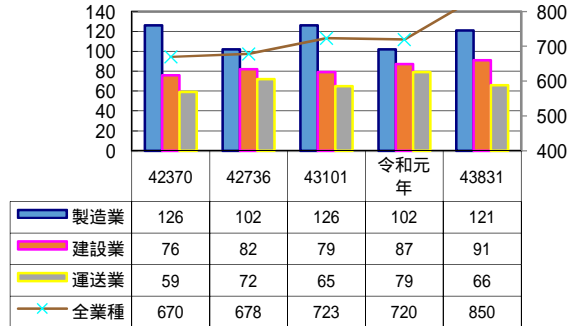
名古屋東労働基準監督署

## 1 労働災害発生状況の推移

死亡災害発生状況の推移(全産業)

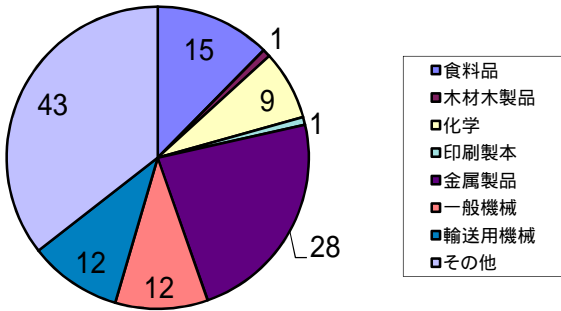


休業災害発生状況の推移

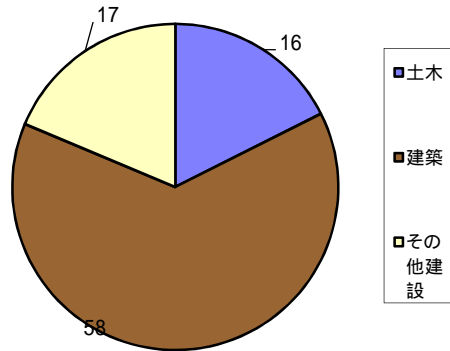


## 2 業種別労働災害発生状況

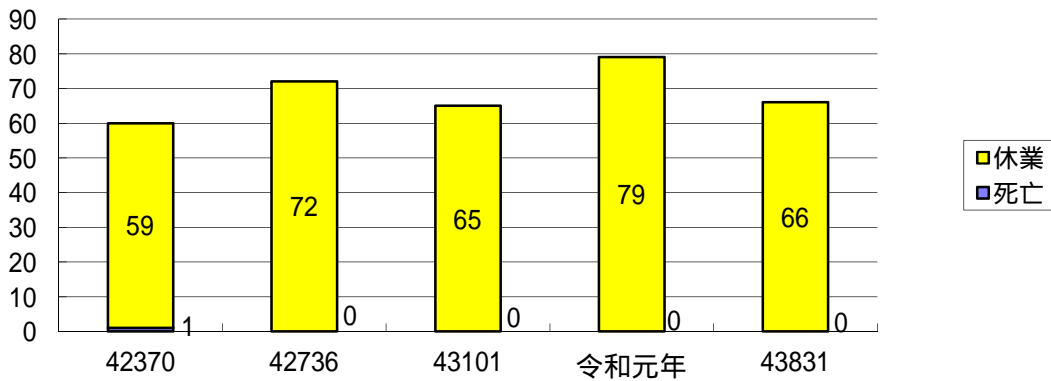
製造業業種別災害件数(R2)



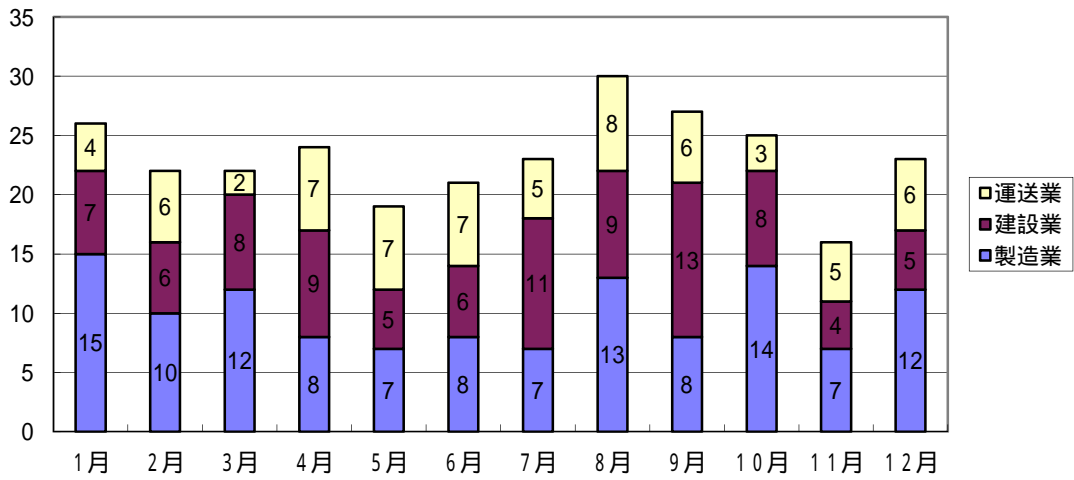
建設業業種別災害件数(R2)



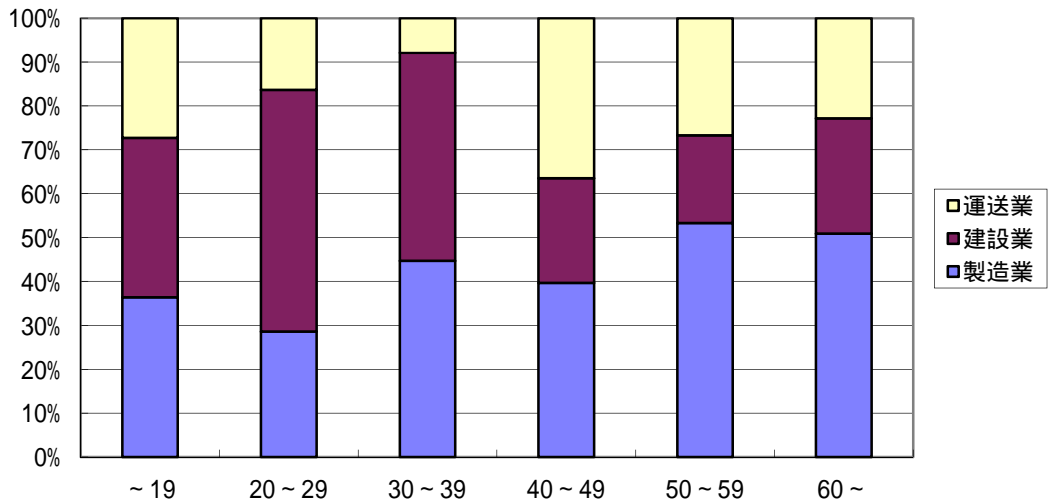
運送業災害推移



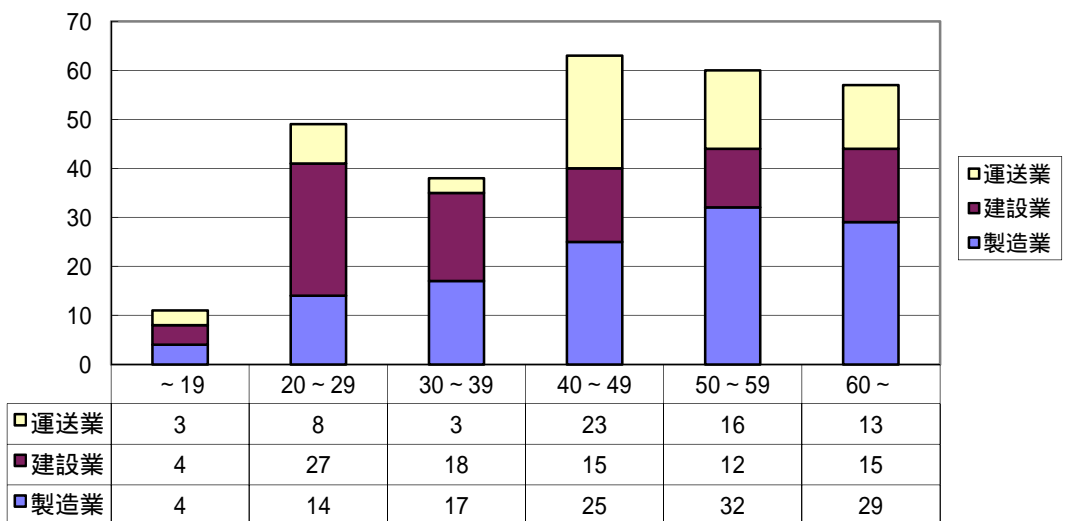
月別発生状況(R2)



年齢別発生状況(R2 構成比)

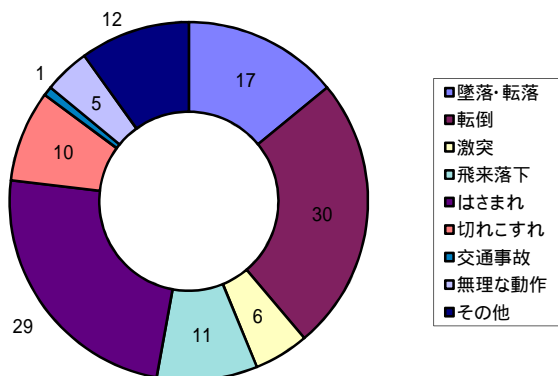


年齢別発生状況(R2 件数)

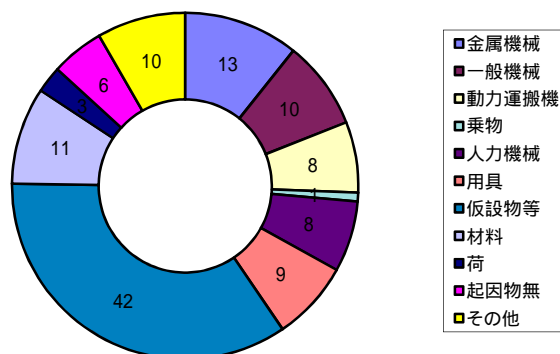


### 3 事故の型別・起因物別労働災害発生状況

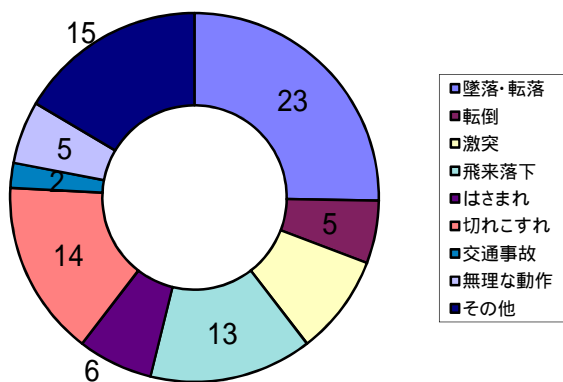
製造業型別 (R2 死亡を含む)



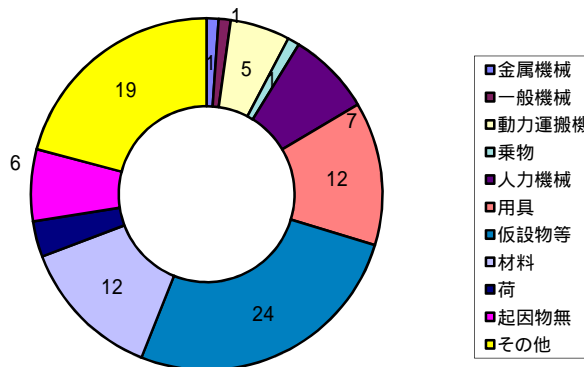
製造業起因物別 (R2 死亡を含む)



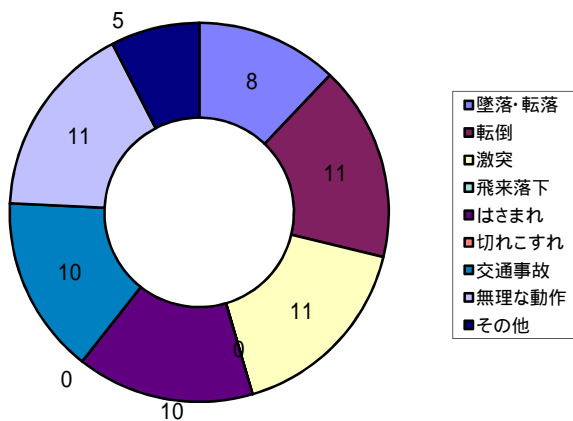
建設業型別 (R2 死亡を含む)



建設業起因物別 (R2 死亡を含む)



運送業型別 (R2 死亡を含む)



運送業起因物別 (R2 死亡を含む)

